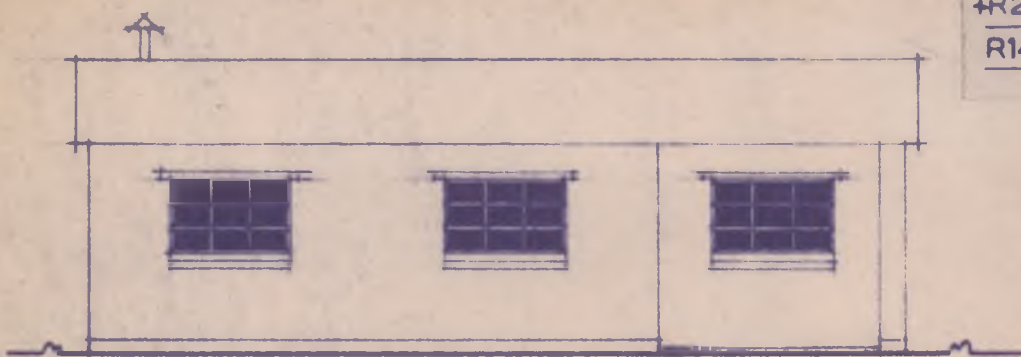
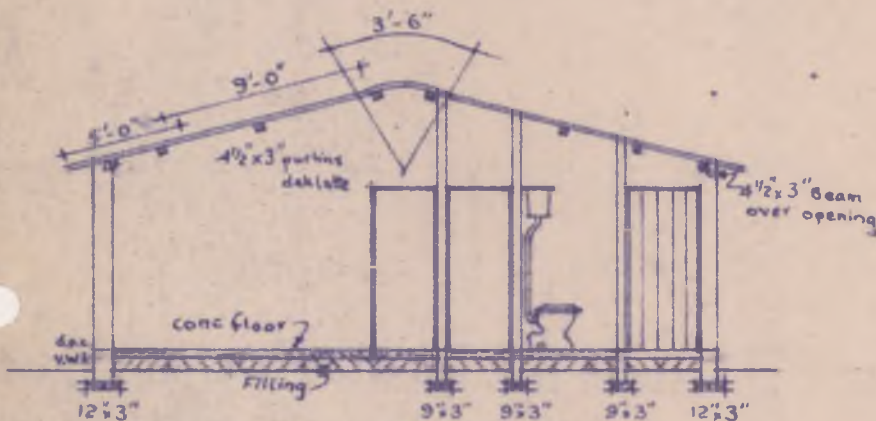


TYPE "L"

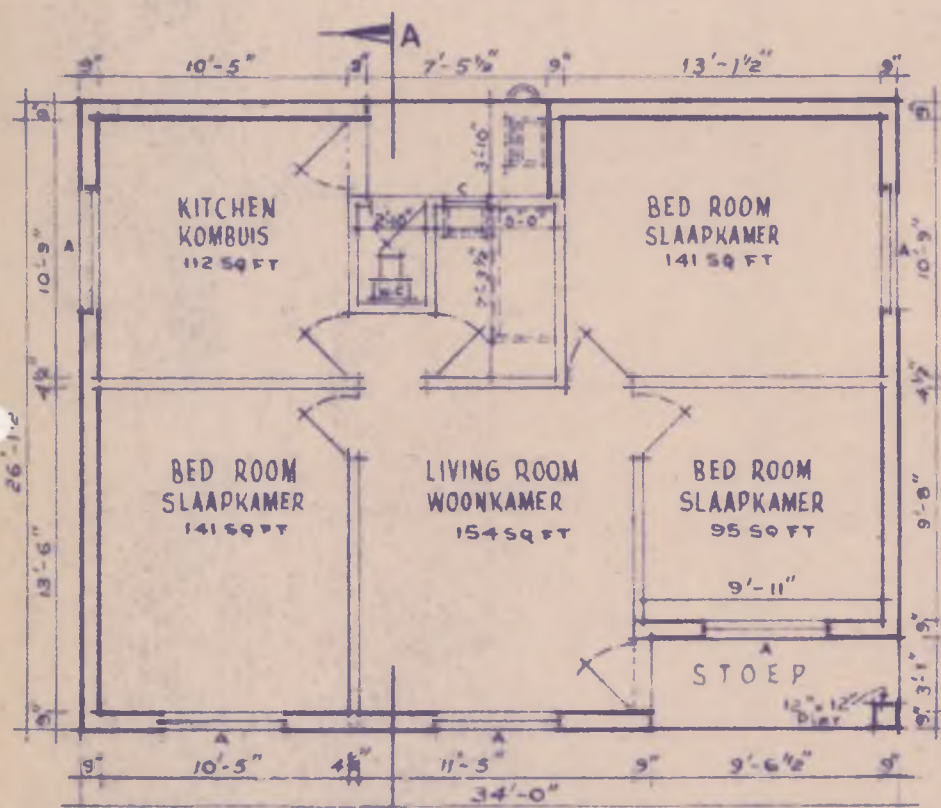
R1170-00 all floors & fencing
 +R260-00 slow combustion
 R1430-00 bath basin
 hot water



FRONT ELEVATION - VOORAANSIG.



SECTION AA - DEURSNIT.

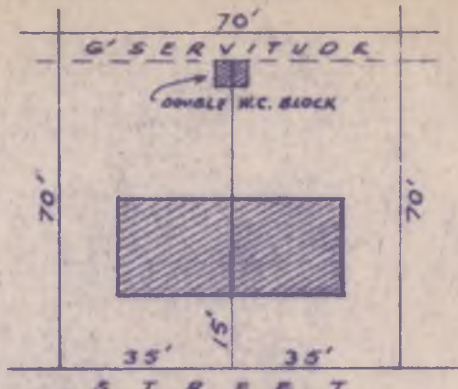


PLAN AREA 888 SQ. FT.

H.D. 2/4 s.

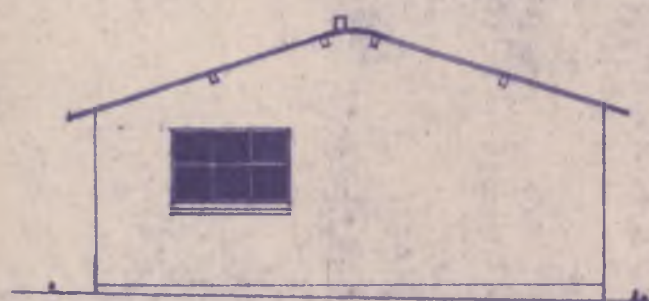
STAD JOHANNESBURG BYAFDELING BEHUISING

BRAWN GETEKEN	<i>[Signature]</i>	CITY OF JOHANNESBURG	
CHECKED NAGESIEN		HOUSING DIVISION	
APPROVED GOEDGEKEER			
DATE DATUM	3-8-67	NON-EUROPEAN HOUSE TYPE 'L' AMENDED NIE BLANKE HUIS TIPE 'L' GEWYSIG	<i>[Signature]</i>
SCALE SKAAL	1/8" = 1'-0"		CHIEF HOUSING ENGINEER HOOF BEHUISINGSIENIEUR

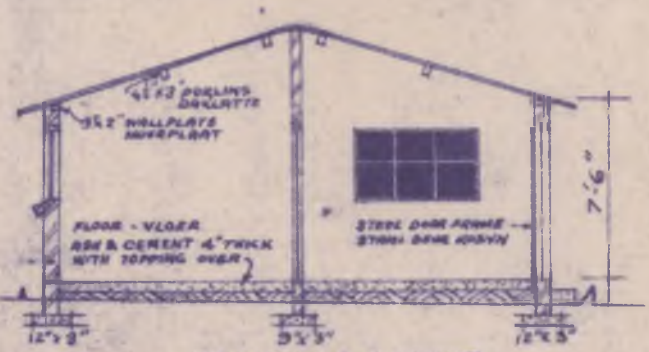


TYPICAL LAYOUT PLAN. SCALE: 1" = 40'-0"

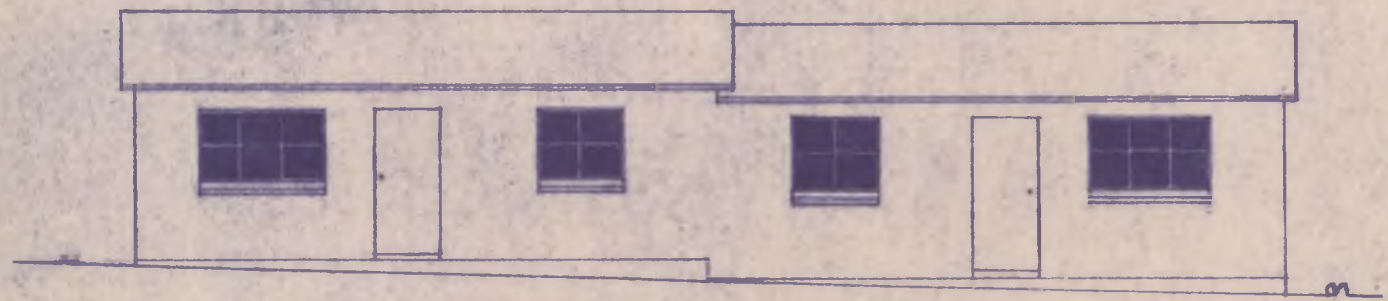
TYPE 51/7
 R1000. 2 floors
 + R50 extra floors
R1050



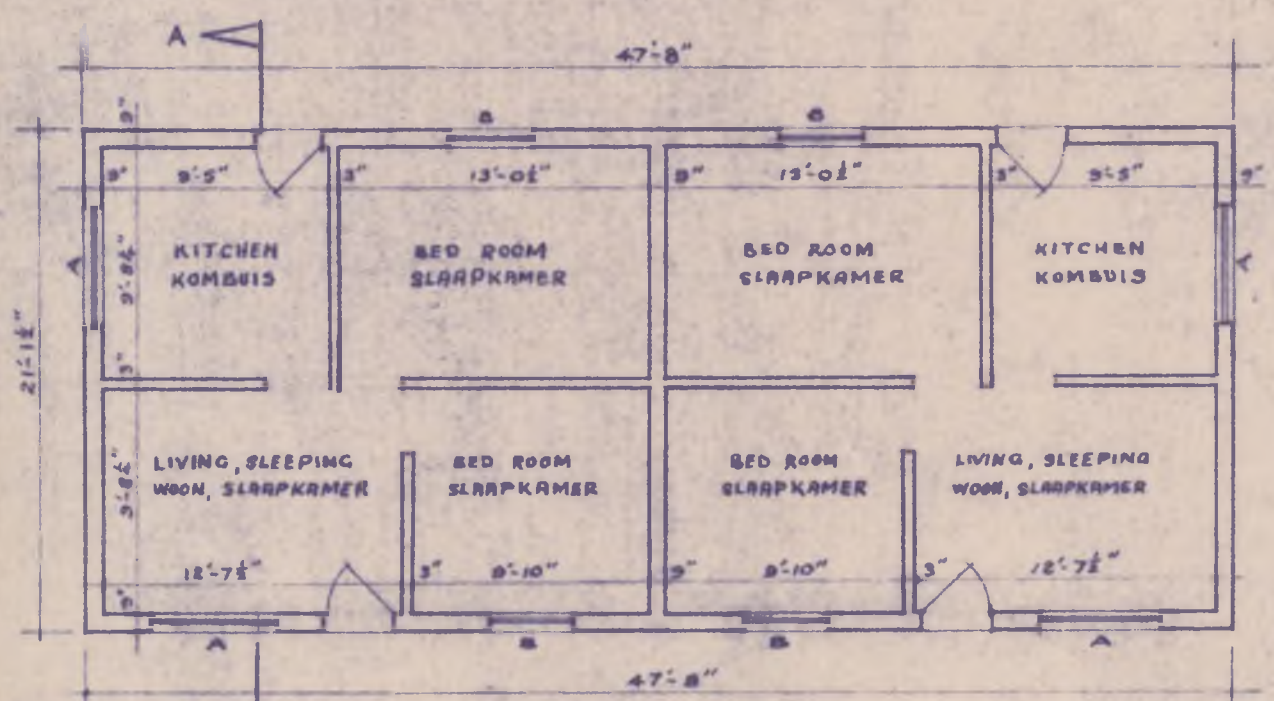
SIDE ELEV - SYAANSIG



SECTION A-A-DEURSNIJ



FRONT ELEVATION - VOORANSIG



ACEQ: 1022 50 FT

PLAN SCALE/SKAAL 1/8" = 1'-0"

H.D.2/36

DRAWN OETEKEN CHECKED NAGESIEN APPROVED OORDECKER	<i>Rabine</i>	STAD JOHANNESBURG CITY OF JOHANNESBURG HOUSING DIVISION	BYAFDELING BEWYSING
DATE DATUM SCALE SKAAL	21-7-67 1/8" = 1'-0"	NON-EUROPEAN HOUSE TYPE 51/7 AMENDED NIE-BLANKE HUIS TIPS 51/7 GEWYSIG	<i>Chlodman</i> CHIEF HOUSING ENGINEER HOOFBEWYSINGSINGENIEUR

A1434/8.11

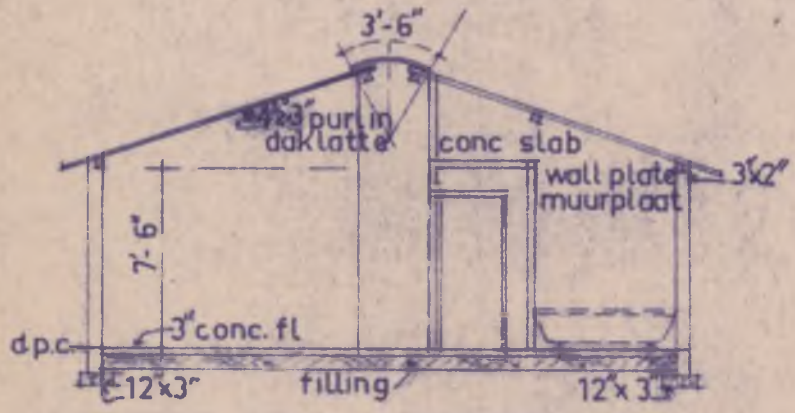
3

TYPE A

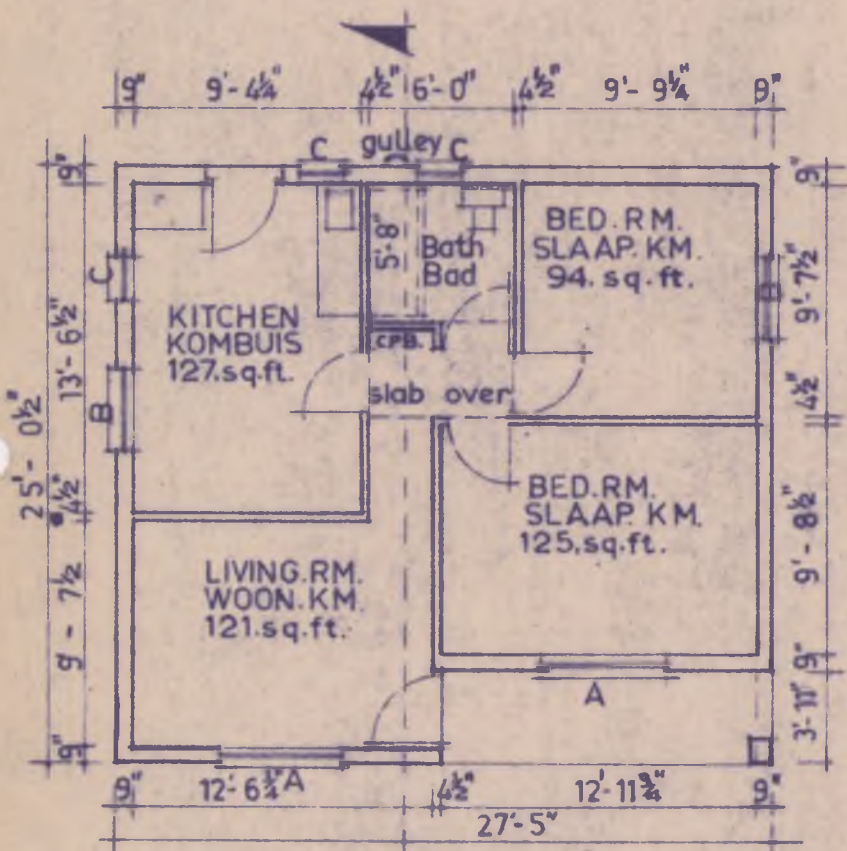
R835 all floors & fencing
 +R260 hot water
R1095



FRONT ELEVATION VOOR AASIG



SECTION. AA DEURSNIJ. AA.

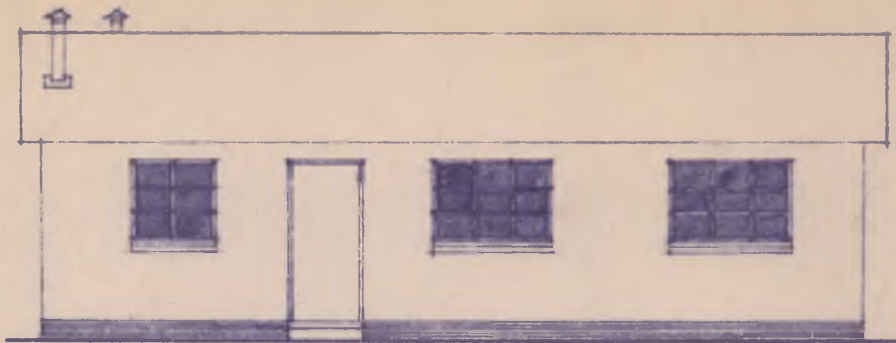


FLOOR PLAN VLOER PLAN
 area 715. sq. ft.

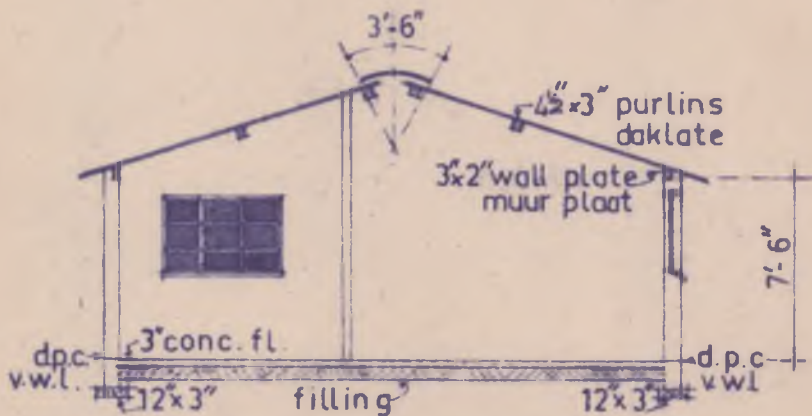
HD2/7s

STAD JOHANNESBURG		BYAFDELING BEHUISING	
DRAWN GETEKEN	<i>EM. Babayi</i>	CITY OF JOHANNESBURG HOUSING DIVISION	
CHECKED NAGESIEN			
APPROVED GOED GEKEER			
DATE DATUM	1-8-67	N.E. HOUSE TYPE ,A, amended N.B. HUIS TIPE .A, gewysig	
SCALE SKAAL	1/8" = 1' - 0"		
		<i>C. Glendon</i> Chief Housing Engineer Hoof behuisingsingenieur	

R. 1103
 263
 Johannesburg

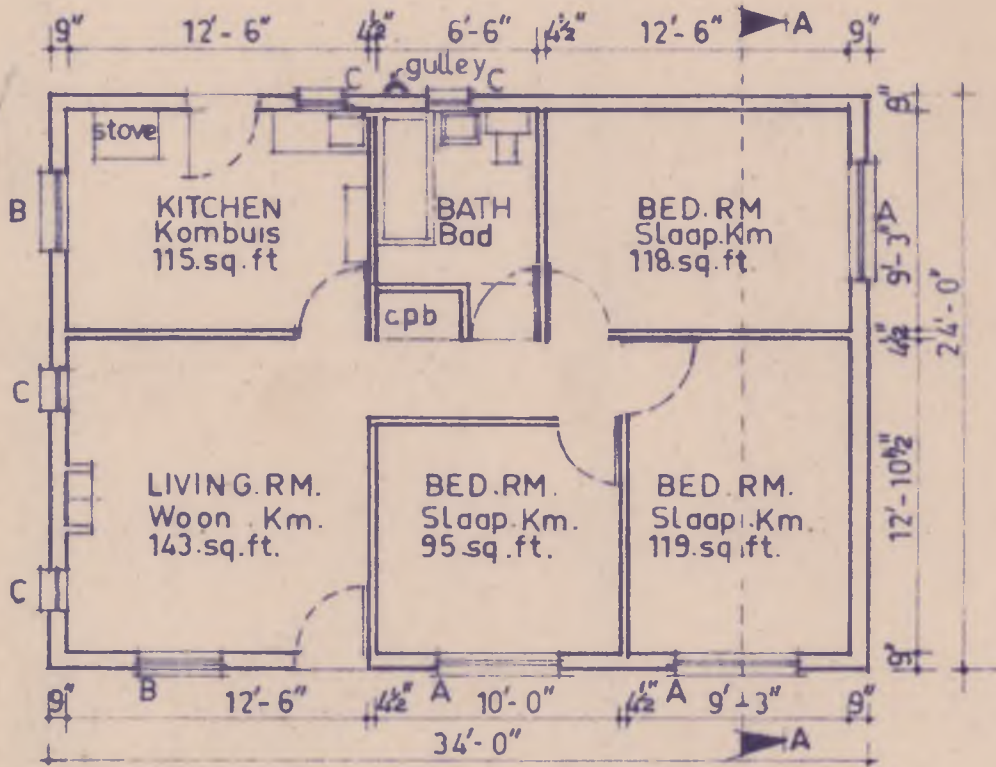


FRONT ELEVATION. VOOR AANSIG.



SECTION AA. DEURSNIT. AA.

TYPE "M"
 R1100 all floors & fencing
 + R260. hot water.
R1360.



FLOOR PLAN. VLOER PLAN
 area 816 sq.ft.

HD2/7B 5

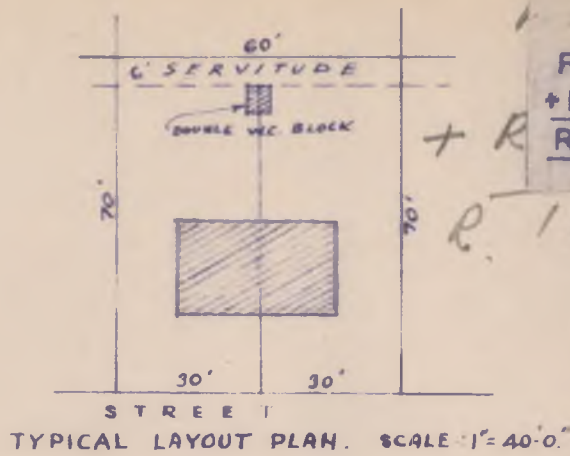
STAD JOHANNESBURG BYAFDELING BEHUISING

DRAWN GETEKEN	<i>R.M. Salooj</i>	CITY OF JOHANNESBURG HOUSING DIVISION	
CHECKED NAGESIEN			
APPROVED GOEDGEKEER			
DATE DATUM	3-8-67	N.E. HOUSE TYPE M, amended N B HUIS TIPE M gewysig	
SCALE SKAAL	1/8" = 1'-0"		
			<i>Chanda</i> CHIEF HOUSING ENGINEER HOOFBEHUISINGSIENIEUR

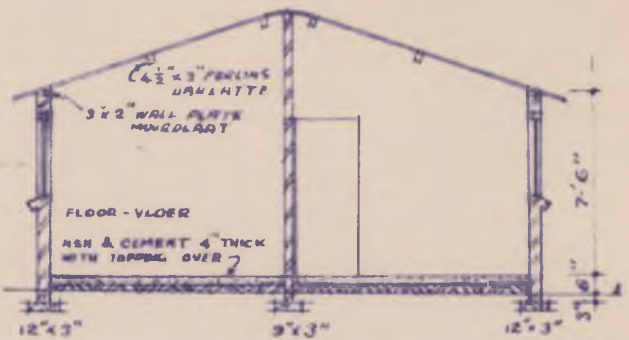
TYPE 51/30

R1000. all floors & fencing
+ R260 hot water
+ R1260.

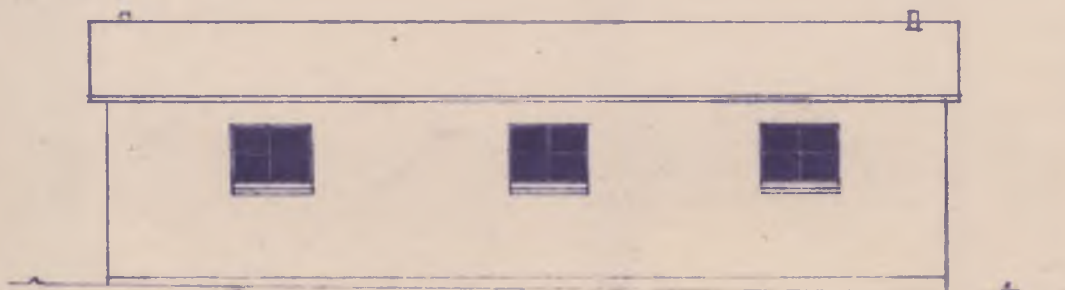
R. 1260



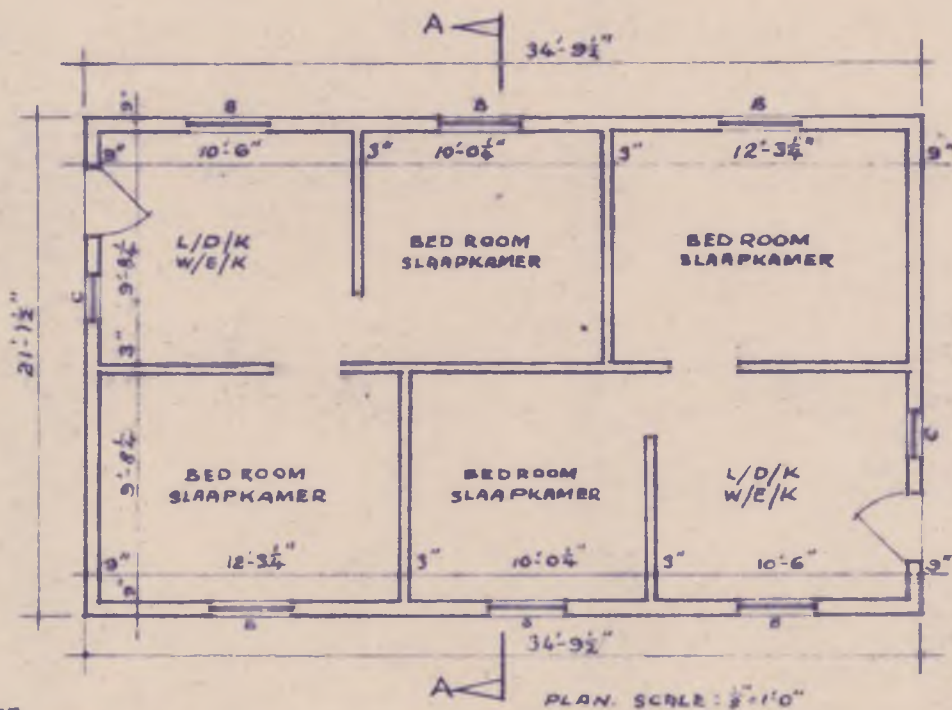
SIDE ELEVATION
SY AANSIG



SECTION AA
DEURSNIIT AA.



FRONT ELEVATION
VOOR AANSIG

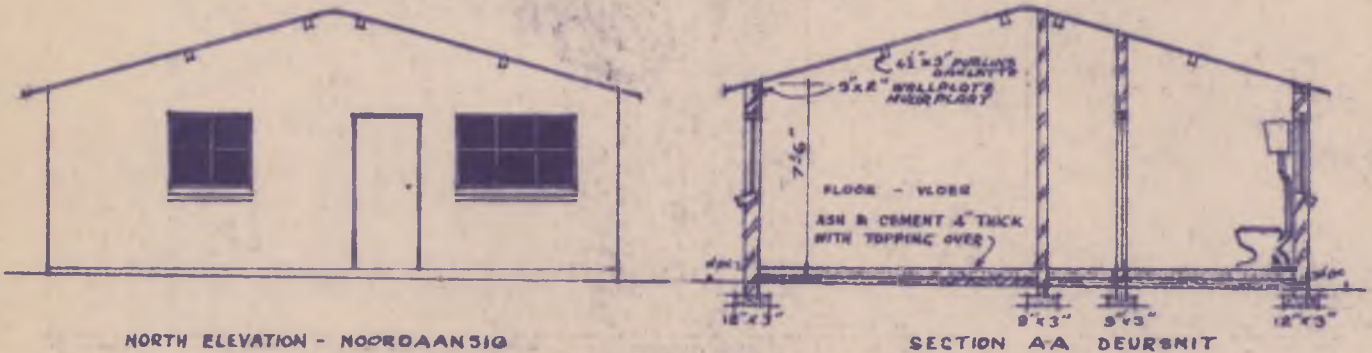


AREA: 735 SQ. FT.

H.D. 26/32

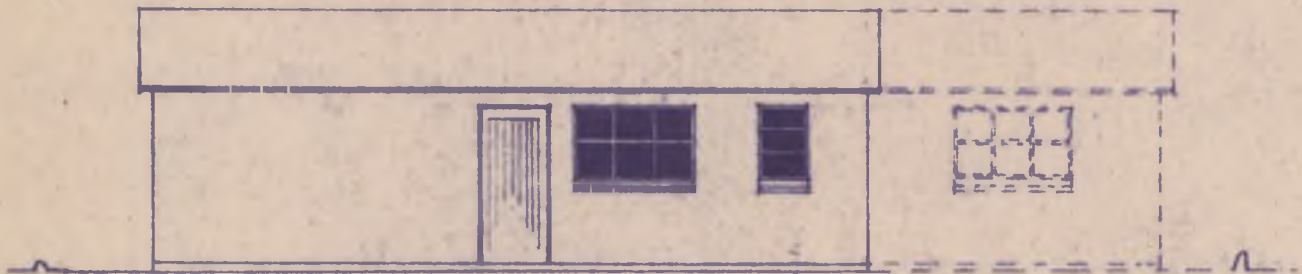
DRAWN BETREK <i>Redine</i>	STAD JOHANNESBURG BYAFDELING BEWUSING	CITY OF JOHANNESBURG HOUSING DIVISION	H.D. 26/32
CHECKED NAGESIEN	NON-EUROPEAN HOUSE TYPE 51/30 AMENDED. NIE BLANKE HUIS TIEPE 51/30 GEWYSIG		<i>Chasman</i> CHIEF HOUSING ENGINEER & HOOFBEWUSINGSINGENIEUR
APPROVED BOEDORKEFER			
DATE DATUM 31-7-67			
SCALE SKAAL 1/2" = 1'-0"			

TYPICAL LAYOUT Scale: 1" = 1'-0"

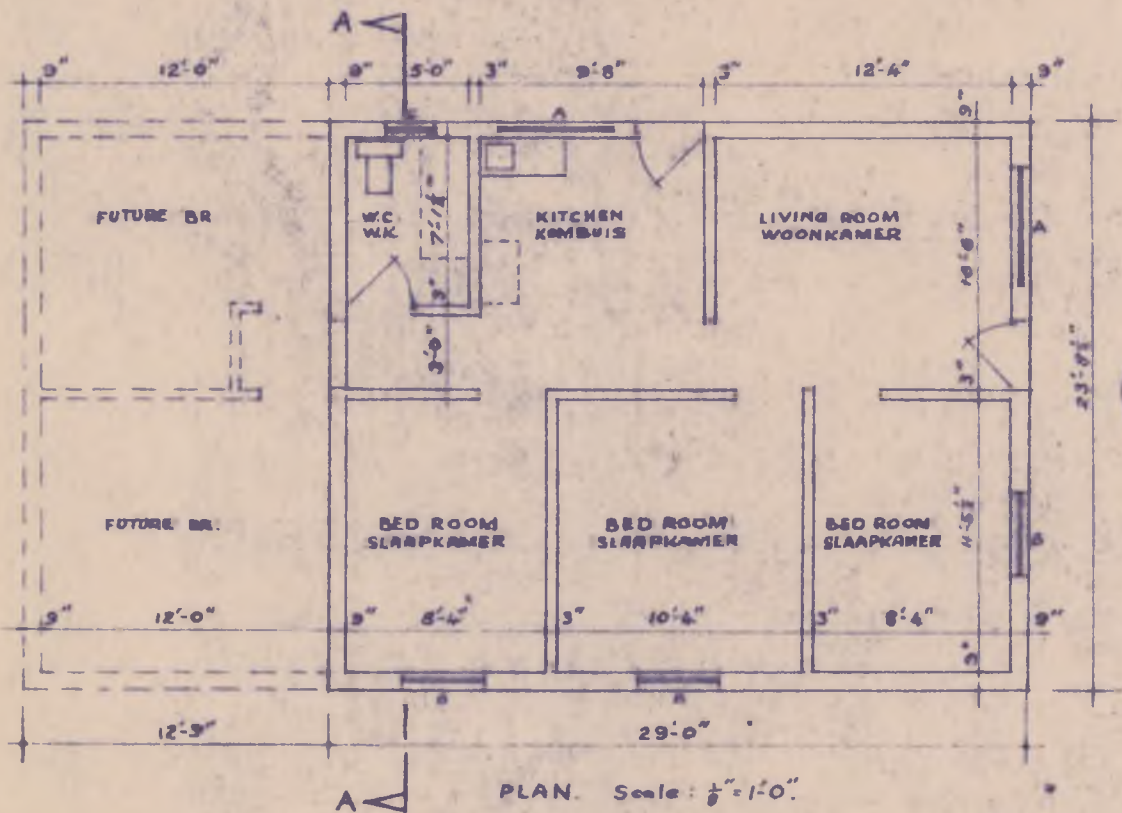


NORTH ELEVATION - NOORDAANSIG

SECTION A-A DEURSNIT



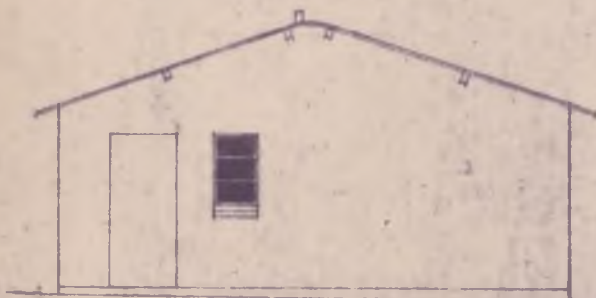
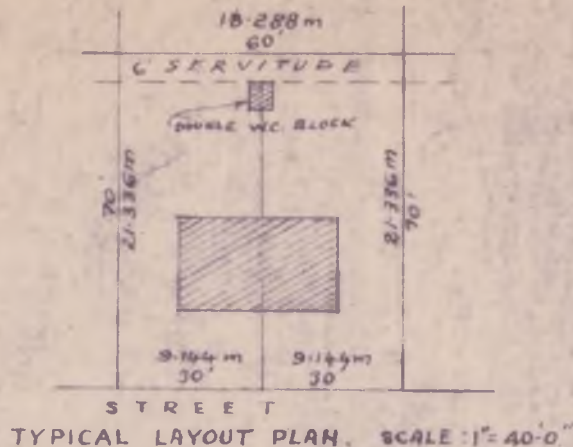
WEST ELEVATION - WESAANSIG



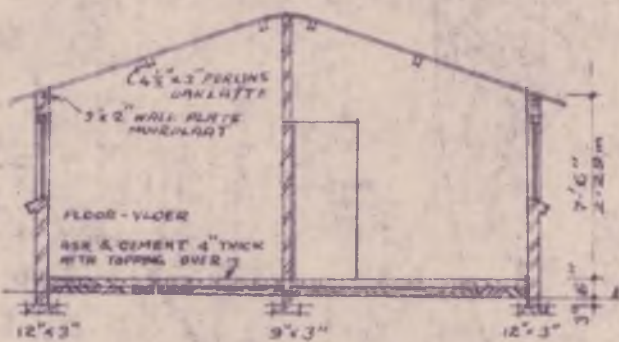
PLAN. Scale: 1/8" = 1'-0"

HD. 2/10 s

DRAWN GETEKEN	<i>L. Fisher</i>	STAD JOHANNESBURG	BYAFDELING BEHUISING
CHECKED NAGESIEN		CITY OF JOHANNESBURG	
APPROVED GOEDGEKEER		HOUSING DIVISION	
DATE DATUM	9-8-67	NON-EUROPEAN HOUSE TYPE 3B AMENDED.	
SCALE SKAAL	1/8" = 1'-0"	NIE-BLANKE HUIS TIPE 3B GEWYSIG.	
			<i>C. J. ...</i> CHIEF HOUSING ENGINEER HOOFBEHUIGINGSINGENIEUR



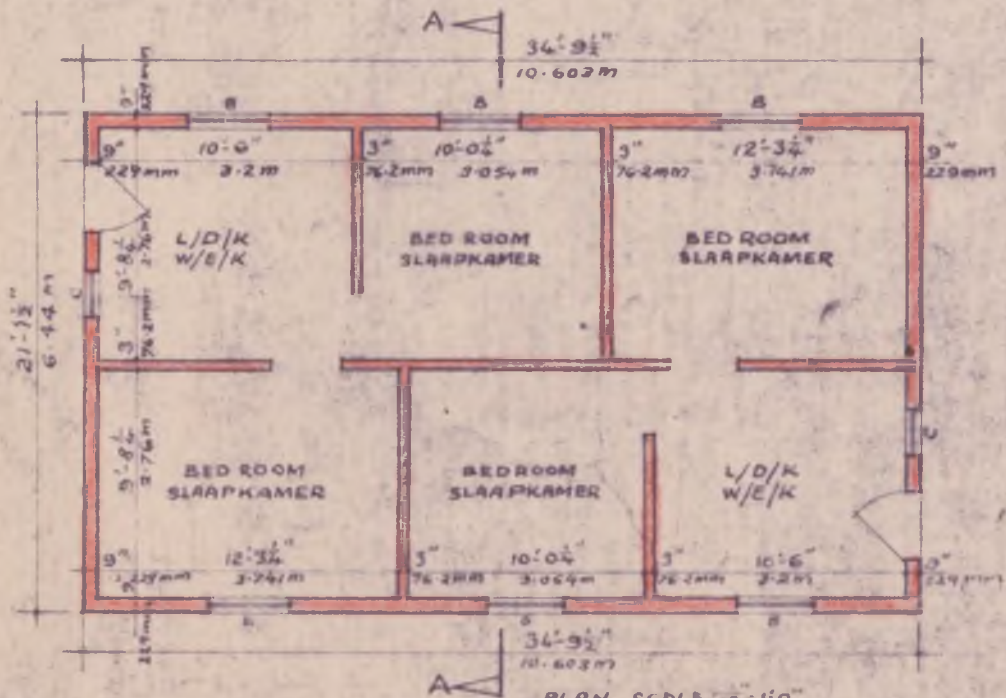
SIDE ELEVATION
SY ARNSIG



SECTION A.A.
DEURSNIT A.A.



FRONT ELEVATION
VOOR ARNSIG



AREA: 735 SQ. FT.

PLAN SCALE: 1/8\"/>

H.D. 26/36

DRAWN DE TEKEN CHECKED NAGESIEM APPROVED GOEDGEMPER DATE DATUM SCALE SKAAL	<i>Radine</i> 31-7-67 1/8" = 1'-0"	STAD JOHANNESBURG CITY OF JOHANNESBURG HOUSING DIVISION NON-EUROPEAN HOUSE TYPE 51/30 AMENDED. NIE BLANKE HUIS TIEP 51/30 GEWYSIG.	BYAFDELING BEWUSING CHIEF HOUSING ENGINEER HOOFD BEWUSINGSINGENIEUR
---	--	--	---

Collection Number: A1434

Colin Goodman Papers, 1930-1972

PUBLISHER:

Publisher:- Historical Papers Research Archive

Location:- Johannesburg

©2014

LEGAL NOTICES:

Copyright Notice: All materials on the Historical Papers website are protected by South African copyright law and may not be reproduced, distributed, transmitted, displayed, or otherwise published in any format, without the prior written permission of the copyright owner.

Disclaimer and Terms of Use: Provided that you maintain all copyright and other notices contained therein, you may download material (one machine readable copy and one print copy per page) for your personal and/or educational non-commercial use only.

People using these records relating to the archives of Historical Papers, The Library, University of the Witwatersrand, Johannesburg, are reminded that such records sometimes contain material which is uncorroborated, inaccurate, distorted or untrue. While these digital records are true facsimiles of paper documents and the information contained herein is obtained from sources believed to be accurate and reliable, Historical Papers, University of the Witwatersrand has not independently verified their content. Consequently, the University is not responsible for any errors or omissions and excludes any and all liability for any errors in or omissions from the information on the website or any related information on third party websites accessible from this website.

This document is part of a collection held at the Historical Papers Research Archive, The Library, University of the Witwatersrand, Johannesburg, South Africa.