

NEW HIGHFIELDS HOUSING SCHEME

Building is now in full swing in the new Highfield Housing Scheme for Africans, and houses are available for sale. Many of the new houses have been sold and the owners are settling in.

You can acquire one of those houses as your own property for the payment of a small amount each month.

Each house is fitted with a stove.

The table below shows the amounts payable in respect of each type of house.

Monthly rates to meet the cost of water, rubbish removal and sanitation are at present £1 3 6 per month, but this is included in the monthly payments shown in the table.

TABLE

DETAILS OF MONTHLY PAYMENTS FOR THE PURCHASE OF HOUSES IN NEW HIGHFIELDS ON THE BASIS OF PAYMENT OVER 25 YEARS

Type of House	Purchase Price	Monthly instalment if no deposit made	Rates as fixed at present	Total monthly payment
Semi detached	£310	£2 0 0	£1 3 6	£3 3 6
Semi detached	£320	£2 1 3	£1 3 6	£3 4 9
Semi detached	£335	£2 3 3	£1 3 6	£3 6 9
Detached	£335	£2 3 3	£1 3 6	£3 6 9
Semi detached	£345	£2 4 6	£1 3 6	£3 8 0
Detached	£345	£2 4 6	£1 3 6	£3 8 0
Detached	£350	£2 5 2	£1 3 6	£3 8 8
Semi detached	£355	£2 5 10	£1 3 6	£3 9 4
Detached	£360	£2 6 6	£1 3 6	£3 10 0
Detached	£370	£2 7 9	£1 3 6	£3 11 3



Detached: THE COST OF THIS HOUSE IS £370

The monthly instalment on this house is £2/7/9, and rates £1/3/6 making a total monthly payment of £3/11/3. If you take in two single tenants they must pay you £1 each—£2 in all. If you are employed, your employer is probably responsible for £1 of your rent. This would give you £3 towards your monthly instalment and you have to find only 11/3d.



Semi detached: THE COST OF THIS HOUSE IS £355

The monthly instalment on this house is £2/5/10, and rates £1/3/6, making a total monthly instalment of £3/9/4. If you take in two single tenants they must pay you £1 each—£2 in all. If you are employed, your employer is probably responsible for £1 of your rent. This would give you £3 towards your monthly instalment and you have to find only 9/4d.

Every house provides one room which may be let to two male tenants. Each can claim £1 rent from his employer so that the house owner receives £2 from his tenants per month and £1 from his own employer, if he is employed. This gives him £3 per month towards his instalment and all he is required to find himself is the difference of a few shillings between £3 and the amount of his instalment. It would be virtually impossible to-day to find anywhere such favourable terms upon which to acquire one's own house

Regulations governing the township were published in Government Notice No. 37 of 1956.

Applications to purchase can be obtained from the Superintendent at his office in the Township—postal address P.O. Box 8116, Causeway.

While an initial deposit is not insisted on, preference will be given to those who are prepared to make a deposit. For every £5 you deposit your monthly instalment is reduced by 8d.



Mrs. Yafele and her children and Mrs. W. Chidziva, proud owners of new Highfields houses



WEDNESDAY, MARCH 14, 1956. THE AFRICAN WEEKLY

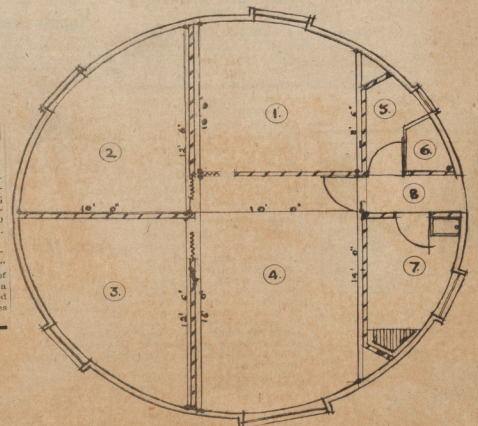


This picture shows the outside appearance of one of the houses being proposed to be built in S. Rhodesia. As you can see it has a round roof and round wall. A special oblong frame is used for the windows. Read the Detailed memorandum and the ground plan on Page 12 of this issue.

Key To The Ground Plan

- 1. BEDROOM 100 sq. ft.
- 2. BEDROOM 105 sq. ft.
- 3. BEDROOM 105 sq. ft.
- 4. LIVING ROOM 150 sq. ft.
- 5. LAVATORY, 6. SHOWER—ALL 30 sq. ft.
- 7. KITCHEN 50 sq. ft.
- 8. ENTRANCE 38 sq. ft.

fully met by the "Shell-Form" Construction, the equipment of which is readily available to a company which is now occupied in the construction of structures suitable for African housing.



Collection Number: A427

Collection Name: African newspaper advertisements, 1953-1957

PUBLISHER:

Publisher: Historical Papers Research Archive

Location: Johannesburg

©2014

LEGAL NOTICES:

Copyright Notice: All materials on the Historical Papers website are protected by South African copyright law and may not be reproduced, distributed, transmitted, displayed, or otherwise published in any format, without the prior written permission of the copyright owner.

Disclaimer and Terms of Use: Provided that you maintain all copyright and other notices contained therein, you may download material (one machine readable copy and one print copy per page) for your personal and/or educational non-commercial use only.

People using these records relating to the archives of Historical Papers, The Library, University of the Witwatersrand, Johannesburg, are reminded that such records sometimes contain material which is uncorroborated, inaccurate, distorted or untrue. While these digital records are true facsimiles of paper documents and the information contained herein is obtained from sources believed to be accurate and reliable, Historical Papers, University of the Witwatersrand has not independently verified their content. Consequently, the University is not responsible for any errors or omissions and excludes any and all liability for any errors in or omissions from the information on the website or any related information on third party websites accessible from this website.

This document is part of a private collection held at the Historical Papers Research Archive, University of the Witwatersrand, Johannesburg, South Africa.