

29.16.2

(Picking on priorities)

(a)

Planning Field work (gazette important)
use. visits, blitzes, use meetings,
registered voters, parties, ^{letters} schools etc.
mass students rally _{groups, books}

(b)

Action

50 national figures present

demos and marches, mass walk
challenges to collaborators, unity claim
walk and rally, acts of conscience/
demonstrations

(c)

Org

IPC, N. & S. Area Com.
organising areas, rural areas
training, African areas

(d)

African Areas

structures, links to elect
campaigns, programs, leading role
removals, joint action & joint
fieldwork, links to

(e)

Events

Boyer weekend 17-19

18-19 August

9 August

YOUTH rally, Women's Rally, Wke. Rally

Election days

(f)

Press

Nat. Strategy - Regional Publicity,
International publicity, links to
event and the action, letters
to Editors, adverts and features
training.

(9) PUBLICATIONS: Nat. publications; slogans
 stickers, buttons, etc. their sharing
 co-ordinated production, community
 newspapers, - links with phrases,
 possible national letter to voters.

(10) MSC - Target, link with other
 activities

(11) STRATEGIC LINE - slogans
 overall strategic approach ^{people and image} _{of USP}
 overall

Overall of brochure \leftarrow national convention
 local option
 who do we see
 change

Mass Line \leftarrow day to day issues
 GST, Prices, Education
 \leftarrow repairs to state

(12) CO-ORDINATION AND PLANNING
 - sharing of resources
 - demarcation - L Gazette

unorganized areas - voters send letters and
 publications.

- comparative cost studies / computers be used to
 dispatch info into regions,

National Events.

- Demos so speakers leading figures
- distribution of speakers
- Letter to the Prime Minister
Content: Elections, Unpleasant of P.W.
- National letter signed by national figure
calling on the Thatcher to resign.
- JPC - national officers push it.
- National co-ordination (24 hr evaluation and
consider employing a full time person) Tel. conference

• UNORGANISED AREAS

- training pulling together activists into instructed by
for one or two mass meetings and blitzes
- W. Cape, Anti-PC and W. Cape could assist.
- Reproduction and organization - N. Offices

• TRAINING

training emphasized in as much
possible (creation of structures) need for
cohesive structures in African areas

• AFRICAN AREAS

Challenges to collaborate
with local authorities, legitimacy
calling on them to resign

• Events

- Workers Rally
- Election Days must be investigated
profile RGC (activists)
meeting no. of people going
the polls.
- Circular to regions affiliates - conduct
open letter to the press. What is democracy

• PRESS - National Strategy

- co-ordination vis-a-vis the press, kind of publicity,
letters must match the press and direction of campaign
- [Telephone office] answering machine must be bought for the
- Telex machine be acquired funds permitting
- Regional Publicity - weekly contact with press
- Publicity Report from Vali - with national Office

Adverts & features - project the true image

(NATIONAL) PUBLICATIONS - 2 UDP news

One before and one after

SLOGANS - Need to be developed

National & regional media committees must address themselves to this matter to be achieved by within 2 weeks

Community Newspapers must carry leading articles on the subject

Letter with various phrases - must be coordinated

Letter to voters - must be coordinated by National

MSC

Natal 55,000

TVL 42,000

E. Cape 27,000

N. Cape 29,000

OPS 14,000

Border 30,000

W. Cape 100,000

259,000

(Opening of Tricameral Parliament - 3/9/84)

Harassment

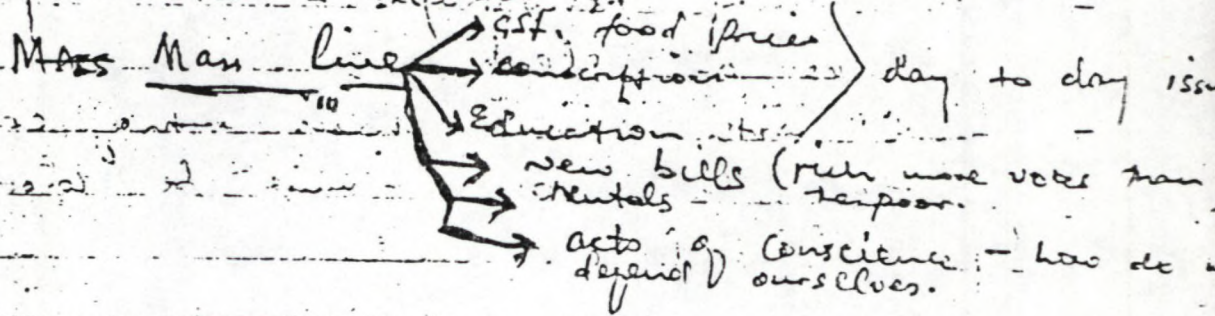
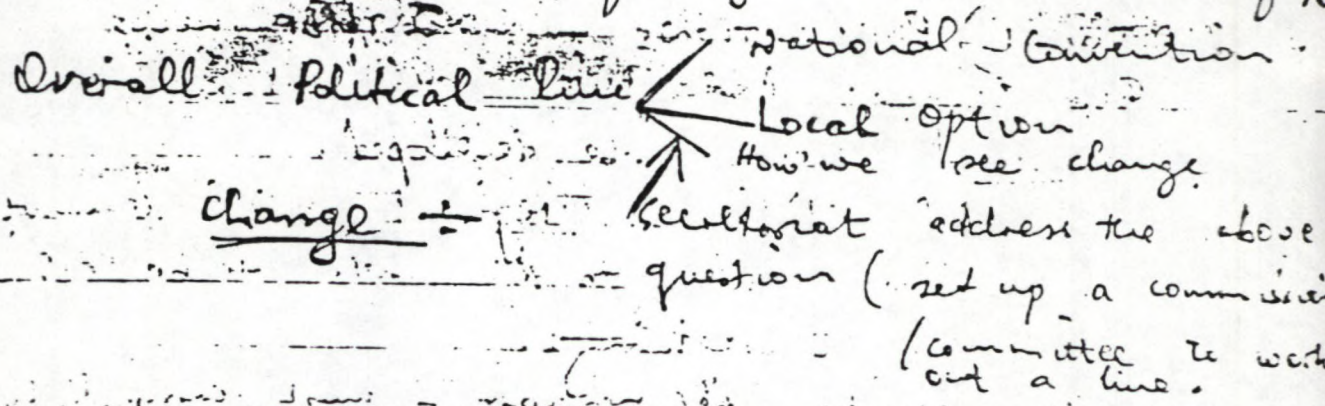
People detained, called in & questioned on who they signed. There must be systematic publicity on harassment.

STRATEGIC LINE

Expose the reasons for the formation of the UDP and projected

press statements and publications (UDF News)


- Balance between the people of the UDF and ^{affiliates} the party



Freedom Line must be coordinated by TVL and the Western Cape

- CO-ORDINATION & PLANNING
- sharing of resources
- demarcation of areas (Goyelle)

(Llanza copy to James)

1. Full time person  to co-ordinate Campaign Logistic Committee
- General Secretary send motivation to region by Wednesday 11/7/84.

Logistic Committee -

- ① demarcation
- ② dealing with problem
- ③ dealing with voters - intervention

4. knowing what should be filtered through to regions.

5. that the National offices must be subject themselves to a logistics committee could be set up in TSL. failing which must consider setting it up in Natal or W. Cape.

- b. skilled (highly) discipline
- working knowledge of national dynamics
- Political experience
- Campaign experience

Suggestion

- 1. Pravin Gordon
- 2.

Harlem
 GBSO GAYCO
 Great Kempt - 300 at m
 Noupoot

ASSISTANCE - W. CAPE

2-3 persons to OES to make assessment of the situation and to develop response. one for Northern Cape and OES. Available within a week

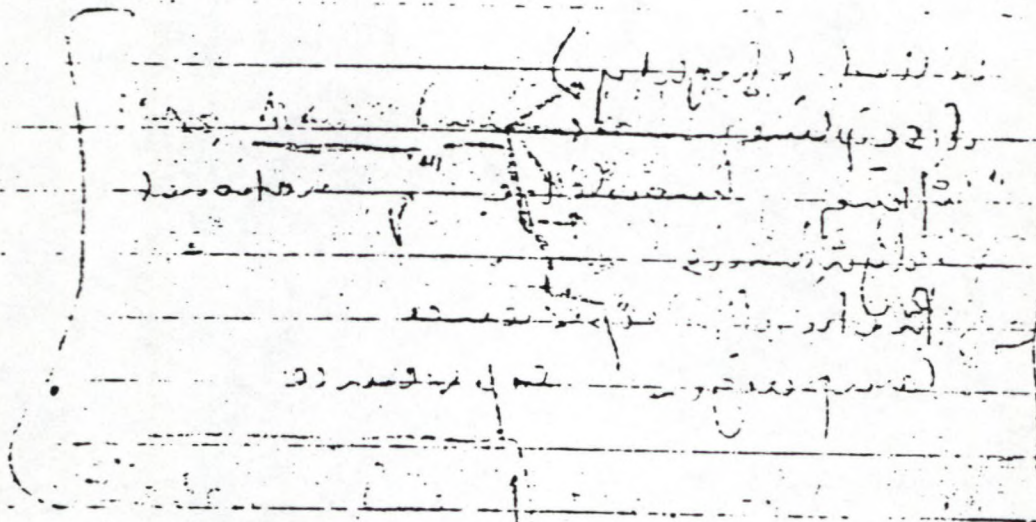
W. Cape (Seats)

- 1. Mainant
- 2. Anquiel and West
- 3. Northern Eastern Cape.

Publication

Publication for Rural Areas:

- Standard Centre spread
- in applications
- picturing of local personality



1. Standard Centre spread
 2. in applications
 3. picturing of local personality

Standard Centre spread

in applications

1. Standard Centre spread
 2. in applications
 3. picturing of local personality

Collection Number: AK2117

DELMAS TREASON TRIAL 1985 - 1989

PUBLISHER:

Publisher: **Historical Papers, University of the Witwatersrand**

Location: **Johannesburg**

©2012

LEGAL NOTICES:

Copyright Notice: All materials on the Historical Papers website are protected by South African copyright law and may not be reproduced, distributed, transmitted, displayed, or otherwise published in any format, without the prior written permission of the copyright owner.

Disclaimer and Terms of Use: Provided that you maintain all copyright and other notices contained therein, you may download material (one machine readable copy and one print copy per page) for your personal and/or educational non-commercial use only.

People using these records relating to the archives of Historical Papers, The Library, University of the Witwatersrand, Johannesburg, are reminded that such records sometimes contain material which is uncorroborated, inaccurate, distorted or untrue. While these digital records are true facsimiles of the collection records and the information contained herein is obtained from sources believed to be accurate and reliable, Historical Papers, University of the Witwatersrand has not independently verified their content. Consequently, the University is not responsible for any errors or omissions and excludes any and all liability for any errors in or omissions from the information on the website or any related information on third party websites accessible from this website.

This document is part of a private collection deposited with Historical Papers at The University of the Witwatersrand.