

NUSAS HISTORICAL + ECC BACKGROUND:

- NUSAS:
- late 20s - 40s: Purges; loss of talented leadership
  - Rigidity in approach/policy/ideology
  - Obvious factionalism emerging: Control of SRC's at any cost
  - 1983: Creation of ECC by purged talent. Overwhelming media coverage, publicity, popularity.
  - 1984: Wits SRC refuses to recognize ECC. Regions develop and grow fast. Declaration.
  - 1985: NUSAS vetoes Young Prog application for affiliation in J.R. Jodan threatens walkout.
    - UDF vetoes Young Prog application for affiliation in CT. NUSAS threatens walkout.
    - Young Prog affiliate to ECC in E.Cape/P.E.
  - 1986: NUSAS claim ECC formed by them.
    - Wits SRC reluctantly forced to constitutionally recognize ECC
    - NUSAS factionalism almost (?) destroys Wits ECC after ECC contests SRC elections.
    - ECC leadership confesses representing ECC on secret NUSAS structures without ECC knowledge
    - ECC falls apart. 4 groups emerge ① those who want nothing more to do with ECC. They leave ② Those who still support ECC but want nothing to do with NUSAS factionalism ③ NUSAS faction "1" ④ NUSAS faction "2".
  - 1987: New structure, new plans, new membership.
    - SRC reps fail ECC. Remain factionally involved. NUSAS interferes with ECC SRC Reps.
    - NUSAS 'unity' talks achieve little apparent change. Factions hide now. Secret structures remain. Conflict cosmetically treated through 'consensus' (both sides lose through compromise) or compulsory arbitration by UDF. No genuine resolution.
    - Tensions emerge in ECC. ECC refuses to contest SRC elections. Controversy.
    - ECC loses public prominence, image, support, membership, appeal, motivation, direction, cohesion.
    - Single issue campaign or political organization? NUSAS influence? National ECC influence?

2 ECC TODAY: X-ROADS

4 principled groups have emerged: liberals. ECC 'true-blues' L  
 NUSAS 'Populists' P  
 NUSAS 'Workaholics' W  
 Ex-NUSAS purged old-timers X

	L	P	W	X
<u>Who are they?</u>	Supporters of issue. Alliance of organizers and individuals joining together on common issue has great appeal. Overcome separate interests to work together.	NUSAS reformers. See ECC as an example of how NUSAS should operate. Dissatisfied with NUSAS intolerance, hard-line, purges. Operate from within.	NUSAS hard-liners. Rigid ideology. FIFA.	Founders of ECC after purge from NUSAS.
<u>What do they want with ECC?</u>	Build on common interests of diverse groupings to more effectively oppose + destroy apartheid.	Use ECC success to influence NUSAS operation/direction. Bring ECC supporters into NUSAS fold by changing perceptions and appeal of NUSAS.	Destroy ECC. ECC success an embarrassment to them. Bring ECC supporters into NUSAS fold by process of political 'education', discipline + indoctrination.	Created ECC partly to show NUSAS the opportunities they were losing through accommodation of W. Use success of ECC to externally pressure NUSAS W, while P pressures NUSAS W internally. Once W eliminated, ECC can be consumed by the new NUSAS. To be successful, P has to control ECC and ensure that ECC/NUSAS are perceived as very similar.
<u>Viewpoints on:</u>				
Secret structures:	Fiercely oppose.	Claim to oppose rigidity.	Fiercely support	Claim to oppose.
'education'	Oppose bias of whatever nature. Support right to make better informed choices	Claim to oppose bias or censorship, yet still utilize them.	Support indoctrination, bias, censorship. Only 1-sided views acceptable.	?
'disciplinary structure'	Fiercely oppose	Necessary	Necessity always	May be necessary
'move' ECC supporters beyond ECC	NO	YES	YES	YES
ECC is part of the democratic movement?	?	YES	YES	YES
Single issue vs political organization	Single issue	?	political organization	? Change to political organization to merge with NUSAS.
SRC elections	Not our issue	YES - pushout W	YES - push up poll to create impression of W popularity. ECC should not be elected though.	YES - use to transform NUSAS.

Why is there such confusion?

- Deliberate NUSAS intervention in war between 2 factions
- Secret agenda of Ex-NUSAS purged old-timers

Symptoms

- Founding Declaration of policies + principles abandoned after growth of ECC. Resulted in leveling of growth to controllable size + proportions; lack of awareness among nearly all new members of founding principles and limitation to single-issue campaign.
- Discrepancy between target and present constituencies. (P 3).  
X used P.W. + L constituencies to grow ECC + create lefty credibility; now steadily moving ECC left to finally merge with NUSAS
- Nationally, NUSAS becoming greater influence on direction. Especially true of campuses where leftward trend resulted in L constituency becoming disillusioned and abandoning ECC, leaving NUSAS supporters as a greater proportion of membership. etc etc.
- Duplication of membership between NUSAS and ECC.
- lack of creativity
- potential introduction of disciplinary forums, political 'education'; perception of ECC as a part of 'progressive' movement, requiring ECC to view itself as responsible to feed in activists into other organizations.
- Declining membership, activity, enthusiasm.
- Perception of ECC national 'line' coming down onto campus ECC. Greater control; less autonomy.

3

CHANGES REQUIRED: Challenges for 1988:

Liberal ← → Totalitarian

- free expression
- free thought
- hear both sides
- make informed choices
- lead
- experience
- understanding
- choose
- learn
- open

?

ECC

- follow doctrine
- strict ideology
- 1-sided
- indoctrination
- follow
- process
- rhetoric
- discipline
- 'educate'
- secret

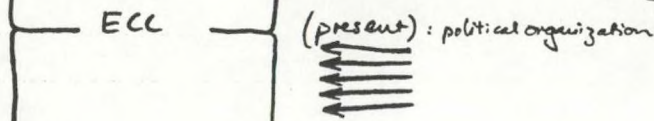
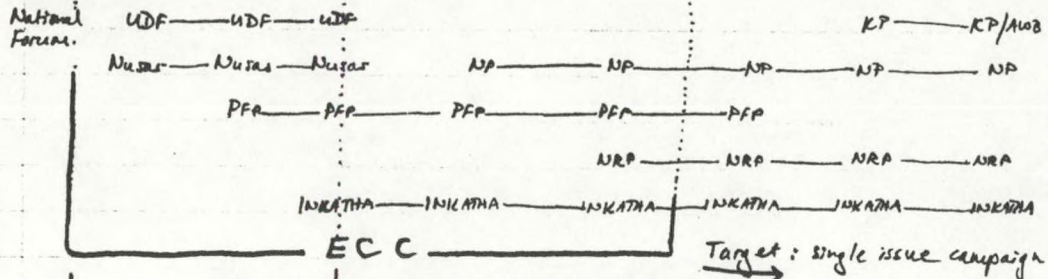
1. Jump left - commitment vs disciplinary forums, 'education', move 'beyond' issue, etc.
2. Revive single issue campaign - fight off factions
3. Resurrect Declaration
4. Reclaim moral high ground - patriotism, rights, emigration etc.
5. Extend into targetted constituency
6. Commitment to Campaign, not organization
7. Service organization, not purely political.

4

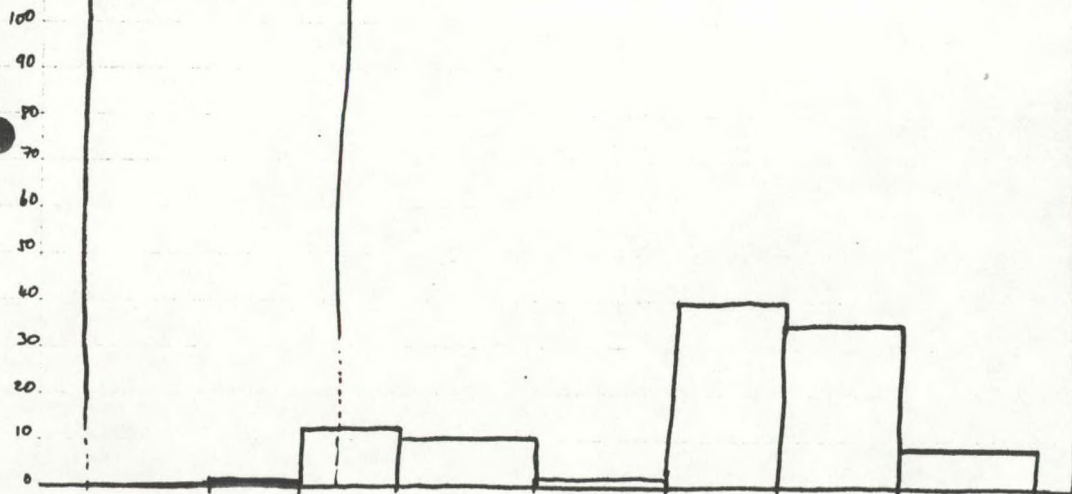
ECC CONSTITUENCY: TARGET: WHITE SA'AF.

WHITE SUPPORT:

BC CHARTER LEFTY LIBERAL UNCOMMITTED 'INDEPENDANT' NEW AMT CONSERVATIVE TOTALTRA

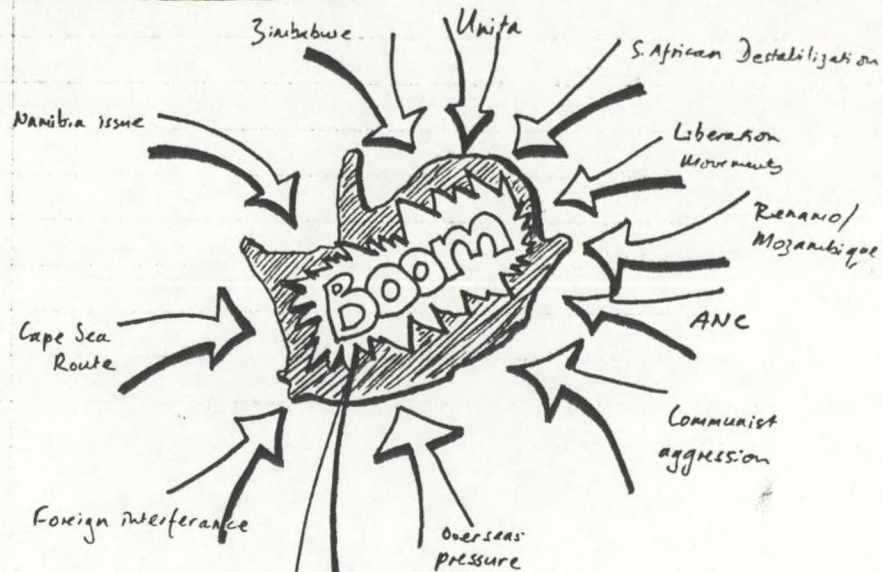


% CONSTITUENCY SUPPORTERS:



5

CREATE TOTAL ONSLAUGHT IDEOLOGY?



- Trade Unions
  - 'Progressive' Organizations
  - Student movements
  - ♀ organizations
  - Community organizations
  - Political groupings
  - Liberal traditions in Press
  - Academic groupings
  - 'The People'
  - Anyone else!
1. those who support  
vs. or maintain the  
Apartheid doctrine  
2. What else?

Where does ECC fit into the above? Specifically into 'Progressive' movement; student organization; political groupings?

**Collection Number: AG1977**

## **END CONSCRIPTION CAMPAIGN (ECC)**

### **PUBLISHER:**

*Publisher:- Historical Papers Research Archive*

*Location:- Johannesburg*

©2013

### **LEGAL NOTICES:**

**Copyright Notice:** All materials on the Historical Papers website are protected by South African copyright law and may not be reproduced, distributed, transmitted, displayed, or otherwise published in any format, without the prior written permission of the copyright owner.

**Disclaimer and Terms of Use:** Provided that you maintain all copyright and other notices contained therein, you may download material (one machine readable copy and one print copy per page) for your personal and/or educational non-commercial use only.

People using these records relating to the archives of Historical Papers, The Library, University of the Witwatersrand, Johannesburg, are reminded that such records sometimes contain material which is uncorroborated, inaccurate, distorted or untrue. While these digital records are true facsimiles of paper documents and the information contained herein is obtained from sources believed to be accurate and reliable, Historical Papers, University of the Witwatersrand has not independently verified their content. Consequently, the University is not responsible for any errors or omissions and excludes any and all liability for any errors in or omissions from the information on the website or any related information on third party websites accessible from this website.

This document is part of a collection held at the Historical Papers Research Archive at The University of the Witwatersrand, Johannesburg, South Africa.