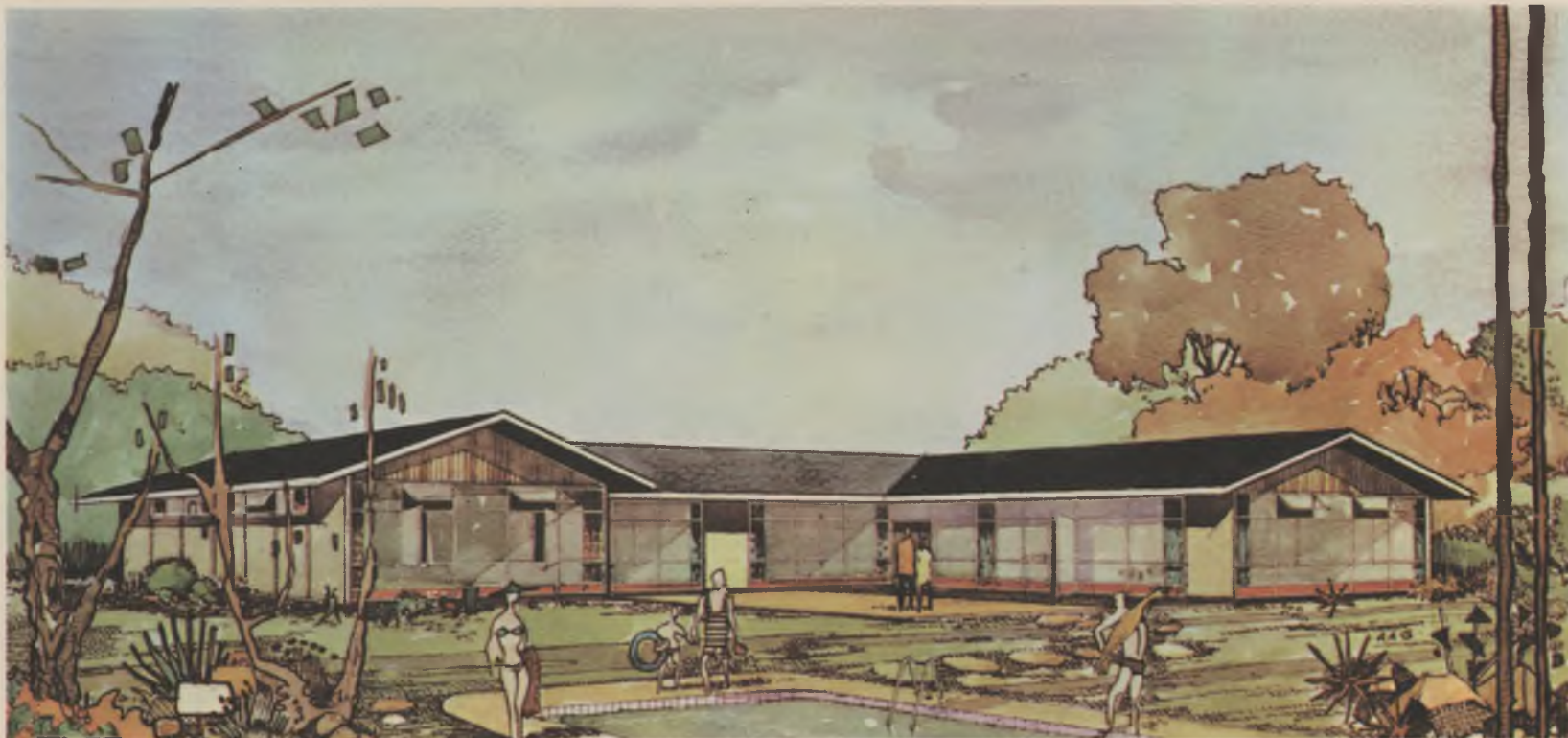




2.1.12



17th Century woodcut—17de Eeu houtsnce  
*sien agter op — see back cover*

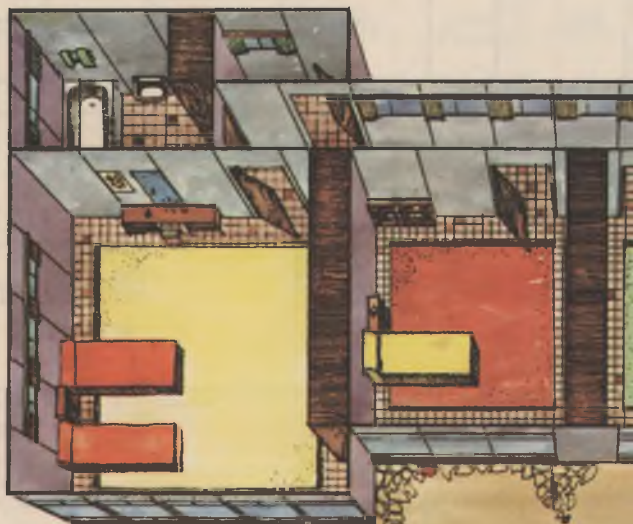


**10 GOOD REASONS**  
why a **SUNSTAR** home is right for YOU

- \* **SUNSTAR** is a good-looking, attractively styled home.
- \* It's strong, durable, permanent.
- \* You save substantially on building costs.
- \* Erection time is 75% less than for conventional brick houses.
- \* A **SUNSTAR** home is cool in summer, warm in winter.
- \* It's impervious to the elements . . . will withstand the heaviest rains or winds.
- \* It's fire-resistant - weather-resistant - vermin-resistant - termite-resistant.
- \* The walls will not crack, even on moving or bad soil.
- \* The standard **SUNSTAR** designs can be varied and extended to suit you.
- \* Asbestos becomes stronger with time and needs no painting, so that maintenance is at a minimum.

**10 GOEIE REDES**  
waarom **SONSTER** die regte woning is vir U

- \* **SONSTER** is 'n aantreklike, goed-ontwerpte woning.
- \* Dit is sterk, duursaam, permanent.
- \* U bespaar aansienlik op boukoste.
- \* Die oprigtyd is 75% minder as vir konvensionele baksteenhuisse.
- \* 'n **SONSTER** woning is koel in die somer, warm in die winter.
- \* Dit is teen die elemente bestand . . . sal die sterkste wind of reën weerstaan.
- \* Dit is bestand teen brand - teen die weer - teen opgedierte en termiete.
- \* Die mure sal nie kraak nie, selfs op swak of bewegende grond.
- \* U kan die standaard **SONSTER** ontwerpe na willekeur afwissel of vergroot.
- \* Asbes word sterker met die tyd en het geen verf nodig nie, dus is onderhoud op 'n minimum.



Alle SONSTER-wonings is vir 'n onbepaalde tydperk ten volle gewaarborg teen swak afwerking of materiaal.





**STAR  
STER**

All SUNSTAR homes are fully guaranteed against faulty workmanship or material for an indefinite period.

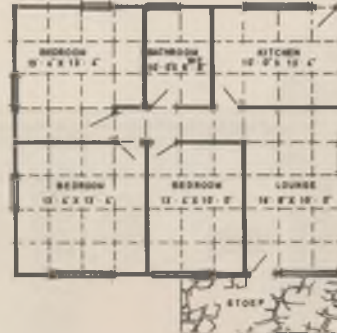


R4. 50/1. - no plumbing  
no painting  
no lighting

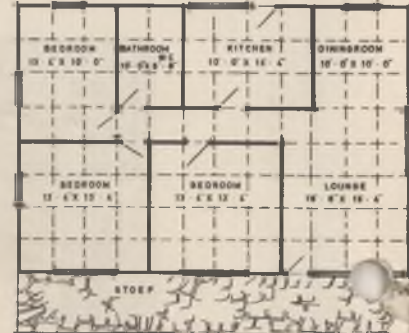
**"CALYPSO"**  
R2000 - R2500



**"MIAMI"** R2997  
R2800 - R3300



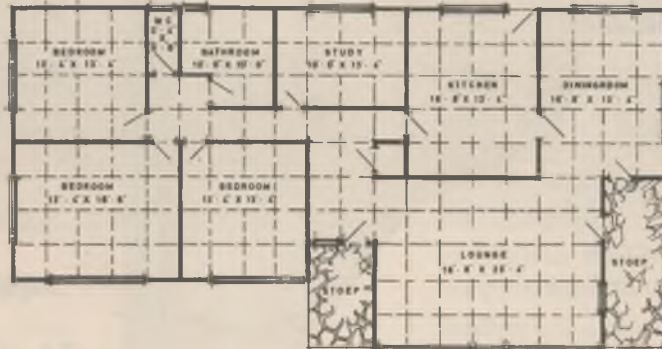
**"MIAMI-SUPER"**  
R3100 - R3600



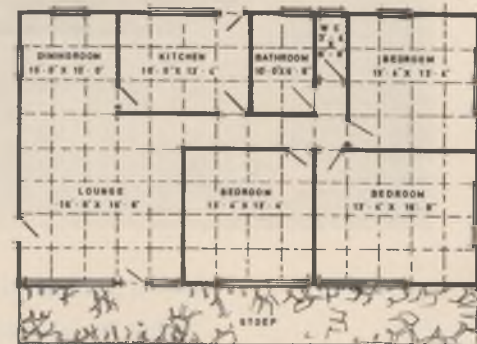
**"FLORIDA"**  
R3700 - R4300



**"FLORIDA-MAJOR"**  
R4100 - R4600



**"CASA MIA"**  
R6500 - R7500

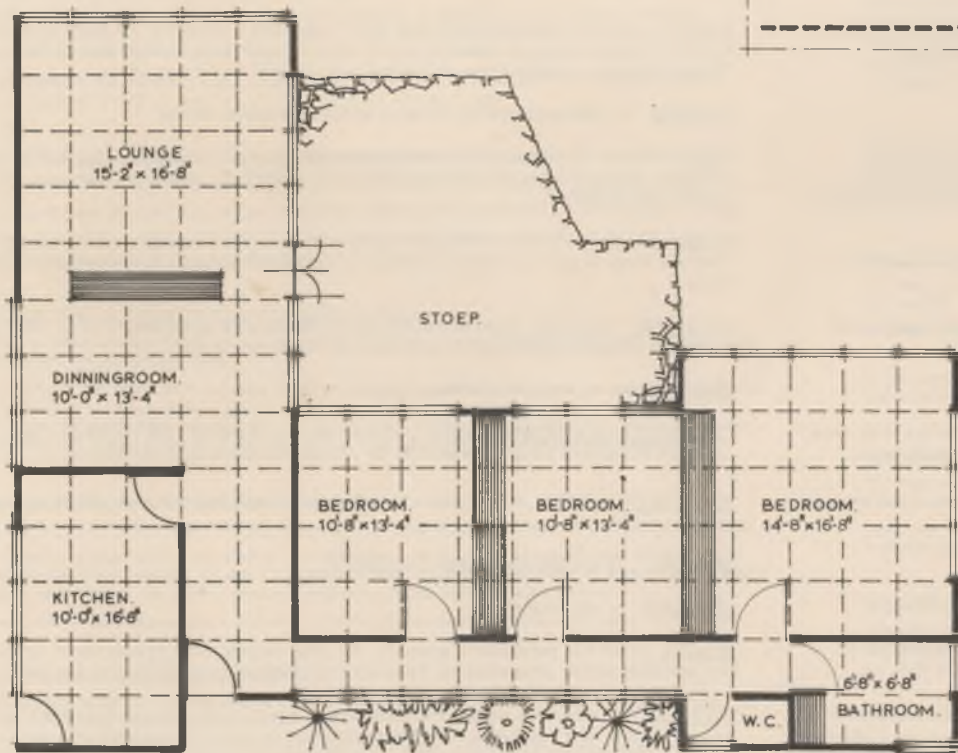
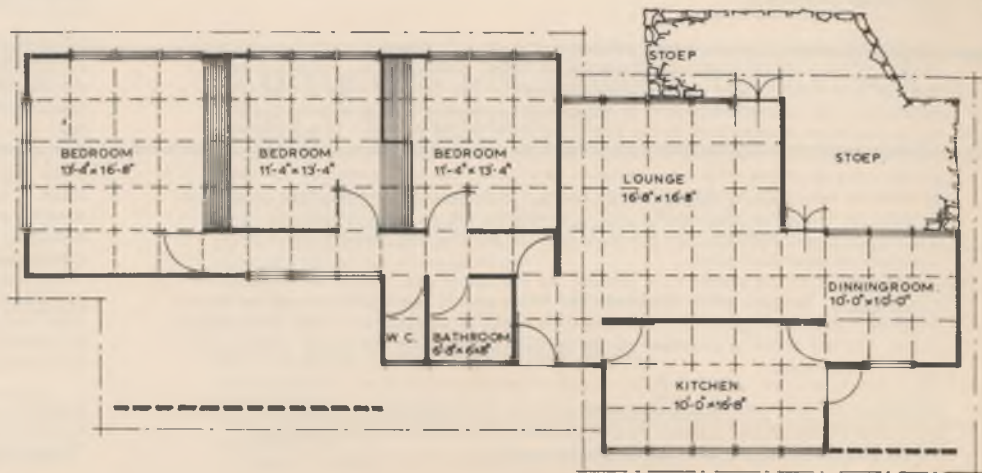


**"FLORIDA-SUPER"**  
R4400 - R5000

*Specialiste in STAALKONSTRUKSIE - Specialists in STEEL CONSTRUCTION*  
**NATIONAL & OVERSEAS D.C. (PTY) LTD.**  
 TELEGRAMME/TELEGRAMS "NODCORP" - TEL. 82341 - POSBUS/P.O. BOX 977 - BLOEMFONTEIN

“LAS PALMAS”

R5000 — R6000



“COSTA BRAVA”

R6000 — R7000

ALGEMEEN: Ons huise is geheel van staal en asbes vervaardig en is dus uiters sterk, volkome bestand teen die elemente en feitlik onverganklik. Verder is dit bestand teen vuur, weer, knaagdiere en termiete. Die dubbele mure is van 3/8" - asbesplate wat klankabsorberend is; en aangesien asbes 'n swak geleier van hitte is, is die huise tewens koel in die Somer en warm in die Winter. 'n Bykomstige voordeel is dat dië mure (met 3"-holte) nie kraak nie, ondanks swak of los grond. Ekstra isolasie in die vorm van veselglas kan tussen die mure asook op die plafon aangebring word teen betreklik geringe koste. Vervaardig in 'n natuurlike grys kleur, benodig die huise nie noodwendig verf of afwerking nie en onderhoudskoste is dus minimaal. Indien verkies, kan die mure egter in aantreklike harmonieuse kleur-kombinasies geskilder word.

FONDAMENT bestaan uit 'n ononderbroke 3"-betonblad met haakboute vir die staal-kolomme. Indien nodig kan die fondament gewapen of verhoog word teen bykomstige koste, dog ons pryse is gebaseer op die veronderstelling dat die terrein gelyk is en vry van hindernisse.

VLOERE: Die 3/4"-afvlaklaag wat saam met die 3"-betonblad die fondament vorm, word glad afgestryk om 'n goeie vlak te verleen vir die lê van blokkiesvloere, plastiekteëls of linoleum teen verskillende pryse.

PLAFON: Die 9'-hoë plafon is van asbesplate.

DAKKONSTRUKSIE: Die kappe bestaan uit gesweisde staalseksies en die dakbedekking uit gegalvaniseerde staal, I.B.R. of gegolfdde asbesplate wat deur middel van daks kroewe en staa lhakies aan die staaldaklatte geheg word. Geute, afvoerpype, nokdekking en gewelfassies is ingesluit.

DEURE is die vlakpaneel-houttipe met of sonder bolig en voorsien van verchromde insteekslotte.

VENSTERS is nie standaard nie en is verkrygbaar in verskillende groottes insluitend glasuring.

GORDYNKAPPE is ingesluit.

LOODGIETERSWERK word as 'n afsonderlike item beskou wat ingesluit kan word teen verskillende pryse na gelang van persoonlike smaak en heersende omstandighede.

INGEBOUDE KASTE tensy ingesluit as standaard uitrusting, is beskikbaar teen ekstra koste.

VERFWERK is nie ingesluit nie (sien 'ALGEMEEN').

BELIGTING is nie ingesluit nie.

SPOORVRAG is vir rekening van die koper en die koste wissel van 2½% tot 12½% op die koopsom volgens die afstand van Bloemfontein na bestemming.

OPRIGTING is baie eenvoudig en kan maklik deur enige handige persoon onderneem word met behulp van oprigtingsinstruksies deur ons verskaf. Sekere van ons kliënte onderneem dit self wat 'n besparing van ongeveer 12½% op die koopsom teweegbring. Oprigtingskoste is egter ingesluit in ons pryse onderhewig aan voorwaardes verstrekkend in ons tender.



# SPECIFICATION

---

GENERAL: Being entirely constructed of steel and asbestos, our houses are of exceptional strength, impervious to the elements and practically everlasting. They are fire-resistant, weather-resistant, vermin-resistant and termite-resistant. Double crackproof walls are built in 3/8" asbestos sheeting with a 3" cavity between walls. They are sound absorbing and - asbestos being of a very low thermal conductivity - the houses are cool in Summer and warm in Winter. For additional insulation, fibre glass lining can be added between cavities and on asbestos ceiling at extra cost. Made of natural grey colour, "NATIONAL" cottages do not necessarily require painting or replacement and maintenance costs could therefore be reduced to absolute minimum, but if so desired. the walls could be painted in attractive harmonious colour combinations.

FOUNDATION consists of continuous 3" concrete slab with holding down bolts for steel uprights. If necessary, the foundation can be reinforced or raised at extra cost but prices are based on the assumption that site is level, free from obstruction and not water-logged.

FLOORS: The 3/4" screed which with the 3" concrete slab forms the foundation is levelled or floated in any suitable matter so as to give a reasonably smooth finish. Parquet flooring, plastic tiles or linoleum can be laid at varying costs.

CEILING: 9' high ceilings are made of asbestos cement sheets.

ROOF consists of welded steel roof frames covered with corrugated iron, I.B.R. or asbestos sheeting fixed by means of hook bolts. Gutters, downpipes, ridging and fascias are included.

DOORS are of the timber flush panel type, with or without fanlights, as required. They are hung in pressed steel door frames and are fitted with chromium plate mortice locks.

WINDOWS: are of all steel construction and obtainable in various sizes. They are framed in pressed steel window surrounds and include glazing.

FELMETS are included in the basic price.

PLUMBING AND SANITARY SYSTEM is considered a separate item which can be included at varying prices depending on choice and prevailing conditions.

BUILT-IN CUPBOARDS unless included as standard equipment are available at extra cost.

PAINTING is not included (See GENERAL').

LIGHTING is not included.

RAILAGE is for the purchaser's account, the cost varying from 2½% to about 12½% of the purchase price, depending on distance from Bloemfontein to destination point.

ERECTION is extremely simple and is mainly a question of "bolting-together" which can be done by any handyman with the assistance of erection instructions submitted by us. Many of our clients undertake this themselves which represents a saving of roughly 12½% of the purchase price. Erection fees are included in our price, subject to conditions quoted in tender.

# DON'T JUST TAKE OUR WORD FOR IT . . . READ WHAT OTHERS SAY!

Mr. H.J. MYBURG, "Slagterspoort", Prince Albert, writes:

"I hereby wish to thank your firm most profusely for the excellent service I received. I also appreciate your personal help and interest. I am very much satisfied with the house and the erection was also very simple. I can assure you that this house is a very good advertisement for your firm in our district. Once more I thank your staff and especially your works manager.

Wish your firm a prosperous New Year."

Mr. J.B. POHL, "Shenfield", Riebeeck East, writes:

"Suddenly I have a house! I have never known anything so fantastic in all my life. For your erector I have only praise. He is a first-class worker and a wonderful labour organiser. I am fully satisfied with the work done, and as far as I can see, everything fits perfectly.

For the present, let me thank you for your service and expert erection and construction work. I will do my best to sell as many of your houses in my area as I can."

Mr. F.T. EDELING, Muller and Commissioner Street, Bethlehem, writes:

"I am now the owner of two prefabricated units manufactured and erected by your good selves. One 50 x 40 Farm Shed with closed sides and windows and one 'CALYPSO' Farm Foreman's Cottage. Both these units were supplied, delivered and erected to my entire satisfaction and I consider both units are worthy of the price I paid for same."

D. BRUCE EVANS & SON (PTY) LTD., Viljoenskroon, writes:

"I wish to place on record that we are extremely satisfied with the building which you have recently supplied and erected on this farm.

I believe that this is the first building which Mr. G. has erected on his own, and wish to inform you that he is a very conscientious, careful and hard-working man. His job was done very thoroughly and nothing but perfection satisfied him. I would mention that one half gable took him more than a day to clad but, when I saw it completed, it was well worth the time that had been spent on it."

Mrs. J.F. RETIEF, P.O. Box 188, Carnarvon, writes:

"We thank you for yours of the 9th November, also the plans and descriptions previously received. Our interest in your houses was merely pipe-dreaming in a way - as we have actual experience of living in one of your prefab. houses - my husband being an engineer and having been on construction units for many years, we have always enjoyed living in the asbestos type houses.

We would like to keep your plans and data - for future reference - one day, perhaps! "

Mr. D.W. PRICE, "Uitkyk" Molteno, writes:

"Having erected four of your structures I feel I must write and thank you for the way you people treated me and the prompt service you rendered.

The structures I am very satisfied with, and feel I made the correct decision by erecting them instead of the old brick buildings.

If ever the need arises that I have to erect another building, it sure would be one of yours."

# U HOEF ONS NIE SOMMER TE GLO NIE . . . LEES WAT ANDER SE!

Mev. E.G.I. CRONJE, „Moedersrust" P.K. Bus 41, Ventersburg, skrywe:

"Hiermee wil ek u vriendelik bedank vir die oprigter wat u vir my gestuur het. Hy het 'n pronk stuk werk gelewer; enige bestuurder kan trots wees op so 'n werksman, en alles wat hy gedoen het was net en net die beste. U kan trots en gesteld wees op die werk wat National and Overseas hier op my plaas gedoen het; dit is 'n spog stuk werk en ons sê baie dankie aan u en die oprigter."

Mnr. C.J. BOTHA, Posbus 288, Delareyville, skrywe:

"Graag wens ek u te berig dat ons baie tevrede is met die 'FLORIDA' huis waarin ek tans al twee maande in bly. Ek wil u en u personeel hartlik bedank vir die vriendelike samewerking en die puik gehalte van diens wat gelewer is. U firma is 'n aanbeveling vir alle persone wat belang stel in fabrieksvervaardigde huise."

Mev. A.M. van RENSBURG, „Krismisspruit", Bus 335, Harrismith, skrywe:

"Ek maak van hierdie skrywe gebruik om u firma baie hartlik te bedank vir flinke en doeltreffende diens. U oprigters was aangenaam en maklik om te versorg. Ek is baie tevrede met die huis en glo my dit sal in hierdie omgewing dien as 'n advertensie. Nogmaals baie dankie."

Mnr. C.J.B. VAN NIEKERK, Posbus 68 „Haco", Clocolan, skrywe:

"Ek dank u vir u vriendelik brief wat in my besit is. Die materiaal, oprigting en dienste wat u gelewer het, is ek heeltemal mee tevrede.

Verskeie persone het in die paar maande na die huis kom kyk en baie was beïndruk. Onder andere kan ek u twee noem, nl. Mnr. Van Niekerk en Geiney, albei van Clocolan.

In die laaste week het ons 'n paar warm dae gehad soos u seker ook in Bloemfontein ondervind het. Die huis was egter gladnie warm nie en ons is baie tevrede."

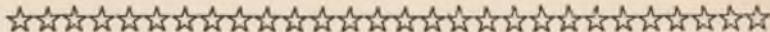
Mnr. H.C. STRAUSS, „Kirries Wes", Pr. Sak 2009, Keetmanshoop, skrywe:

"Ek dank u vir u spoedige antwoord, sowel as die gewysigde staat. Ingesluit vind my tjek no. 690234, vir die bedrag van R2,970.67.

Graag wil ek u hartlik bedank vir u vriendelikheid, en wil u ook meedeel dat talle mense al na die huis kom kyk het en beïndruk was, en ons adverteer u so ver moontlik."

WANGHANELLA (EIENDOMS) BEPERK, Posbus 99, Ceres, skrywe:

"Ons heg hierby aan 3 fotos van 'n 'CASA MIA' huis wat gedurende November 1964 deur u firma te Wanghanella opgerig is. Indien dit vir u van enige nut mag wees kan u dit gerus gebruik. Ons mag net meld dat ons baie tevrede met die huis is en dit heelwat gunstige kommentaar uitgelok het."



"A suit that does not fit, is nothing but a nuisance," says the proverb . . . or, freely interpreted, a thing is either right or useless. At NODC, we heartily agree; our motto, as you see, is "BE ACCURATE"!

**Fortunam, velut tunicam, magis concinnam  
proba, quam longam.**



**Een flodder-kleet dat niet en pakt/  
En is niet anders als een last.**

De

„'n Kleet wat nie pas nie, is niks anders as 'n oorlas,” sê die spreekwoord . . . met ander woorde, 'n ding is òf reg òf nutteloos. Dit is ons oortuiging ook, by NODC; ons leuse, soos u sien, is „WEES AKKURAAAT”!

*A section of our works 'n Seksie van ons fabriek*



*Artist's impression of our own building* ★ *'n Kunstenaarsindruk van ons gebouw*

STAALSTRUKTURE MET *Luukse Voorkoms*



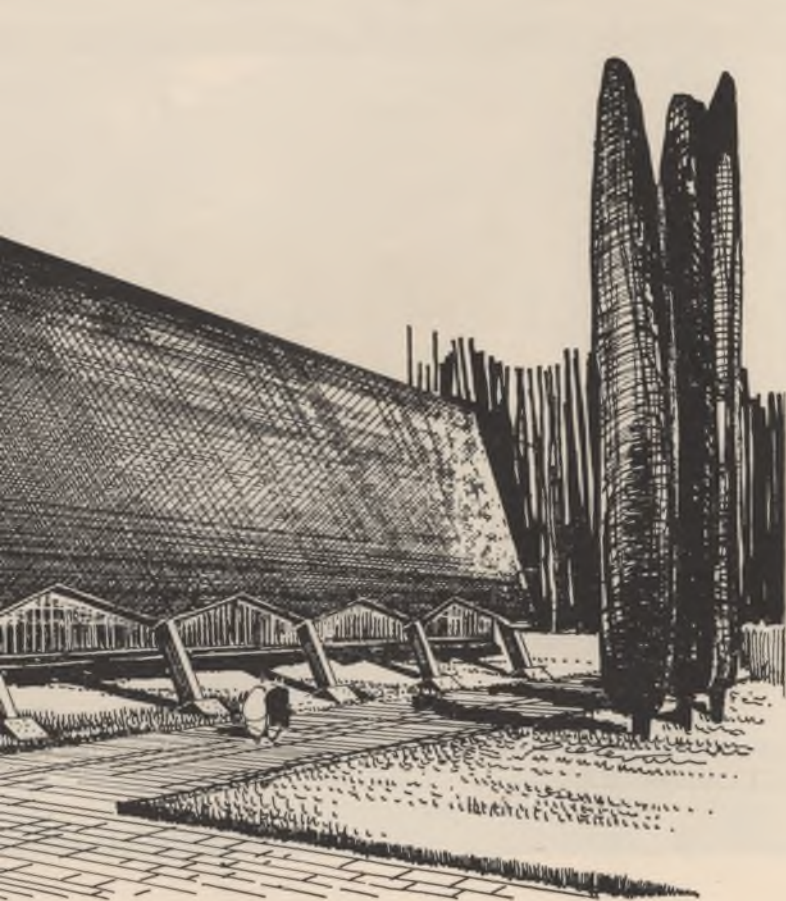
STEEL FRAMED BUILDINGS WITH A *Luxury Look*

## KERKONTWERP IN STAAL





# CHURCH DESIGN IN STEEL



GRANDSTAND DESIGN IN STEEL ★ PAWILJOEN-ONTWERP IN STAAL



*"We will gladly co-operate with any Architect or Civil Engineer selected by clients."*

*„Ons sal met genoeë saamwerk met enige Argitek of Siviele Ingenieur uitgesoek deur kliente."*

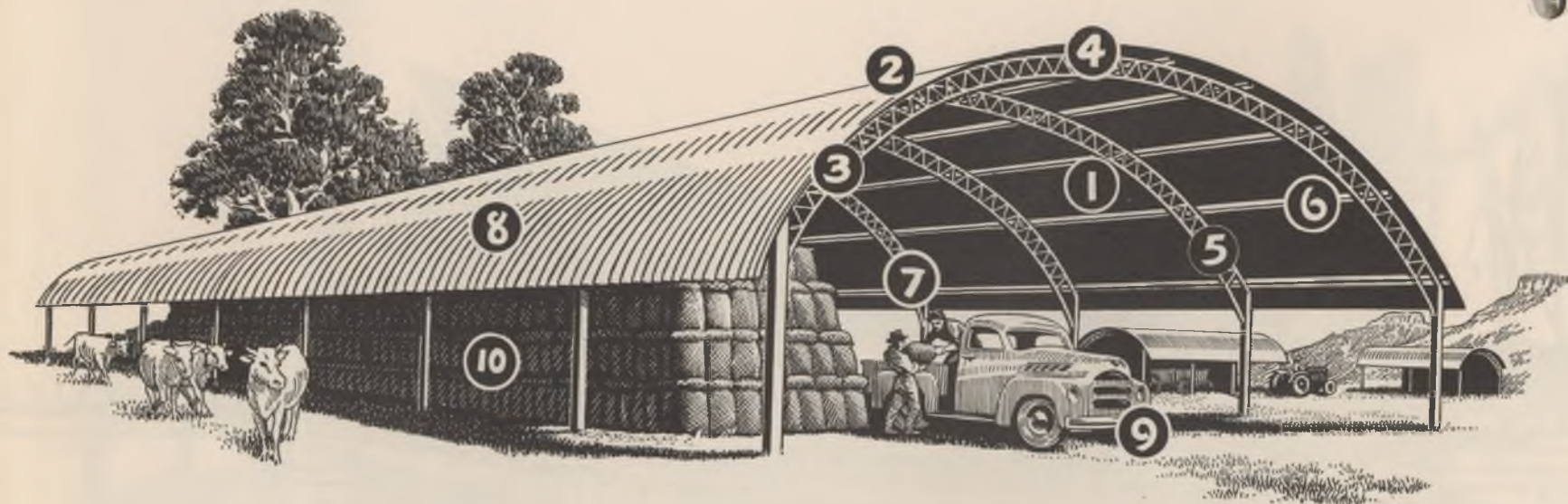
***Specialiste in STAALKONSTRUKSIE — Specialists in STEEL CONSTRUCTION***  
**NATIONAL & OVERSEAS D.C. (PTY) LTD.**  
 TELEGRAMME/TELEGRAMS "NODCORP" — TEL. 82341 — POSBUS/P.O. BOX 977 — BLOEMFONTEIN



DIE **PALMER**-STAALSTRUKTUUR MET MODERNE PARABOLIESE DAKONTWERP –  
*waarom dit beter waarde is vir u geld*

**MODEL O.A.S.**

Available in 15', 20', 25', 30', 40', & 50' widths  
 and 8', 9', 10', 11', 12', 13', 14', 15', 16', 17', & 18' heights  
 and in any length.



THE **PALMER** STEEL BUILDING WITH MODERN PARABOLIC ROOF DESIGN –  
*why it is better value for your money*

**MODEL O.A.S.**

Beskikbaar in breedtes van 15', 20', 25', 30', 40' & 50',  
 hoogtes van 8', 9', 10', 11', 12', 13', 14', 15', 16', 17' & 18'  
 en in enige lengte.

**1 Double the storage**

Parabolic roof structures offer 108% more storage in the actual roof section than the ordinary pitch roof building.

**2 Neater**

Parabolic roof structures do not require any ridging, thus eliminating possible leakage and giving a smoother finished appearance.

**3 Cooler**

Parabolic roof structures are much cooler than the ordinary pitch roof building because of the dome shape and extra height.

**4 Higher front entrance**

Curved trusses allow increased headroom for higher door-entrance and therefore extra clearance to high farm implements or loaded vehicles.

**5 Easy to expand**

„PALMER” structures can easily be expanded by adding additional bays or low cost lean-to's.

**6 More durable**

Being entirely steel-framed these structures are fire-resistant, weather-resistant, vermin-resistant and termite-resistant.

**7 Easy to erect and to dismantle**

„PALMER” buildings are easy to erect and easy to dismantle and moved to another location with 100% re-use of material because of their bolted construction.

**8 Safer**

Parabolic roof structures are scientifically designed to resist extreme weather conditions. Wind resistance being reduced by 25% because of the curved shape of the roof, storm hazards are considerably reduced.

**9 More manoeuvrability**

CLEAR-SPAN, POST-FREE interiors allow maximum manoeuvrability for vehicles or implements.

**Wider side entrance**

A minimum 15 feet between columns allows ample space for side entrance.

**1 Dubbel die bergruimte**

Paraboliese dakstrukture bied 108% meer berg-ruimte in die eintlike dakgedeelte as die gewone staandakgebou.

**2 Lyk mooier**

Paraboliese dakstrukture vereis geen nokdekking nie, dus word moontlike lekkasie uitgeskakel en 'n gladder afwerking word verkry.

**3 Koeler**

Paraboliese dakstrukture is veel koeler as die gewone staandakgebou vanweë die koepelvorm en ekstra hoogte.

**4 Hoër ingang voor**

Geboë kappe laat meer kopruimte vir hoër deur-ingang en dus ekstra speling vir hoë plaaswerk- tuie of gelaaide voertuie.

**5 Maklik om te vergroot**

„PALMER”-strukture kan maklik verleng word deur bykomstige seksies of goedkoop afdakke by te voeg.

**6 Duursamer**

Aangesien hierdie strukture geheel van staal is, is hulle bestand teen brand, die weer, ongedierte en termiete.

**7 Maklik om op te rig en uitmekaar te haal**

Vanweë hul konstruksie met boue, kan „PALMER”-geboue maklik opgerig en afgetakel en na 'n ander terrein verskuif word, waar al die materiaal weer gebruik kan word.

**8 Veiliger**

Paraboliese dakstrukture is wetenskaplik ontwerp om buitengewone weerstoestande die hoof te bied. Weerstand teen wind word met 25% verminder. Vanweë die koepelvorm van die dak word storm-gevaar aansienlik verminder.

**9 Meer beweegruimte**

Onversperde, stutvrye binnoruim laat maksimum beweegruimte vir voertuie of werktuie toe.

**10 Breër sy-ingang**

'n Minimum van 15 voet tussen pilare laat volop ruimte vir sy-ingang toe.

The wise man shears a sheep, the fool a pig . . .  
“Look before you leap,” might be a caption for this picture; “An excellent motto to bear in mind when planning your purchase.”

*tussen man en vyf.*

85

*A bay rumori, é poca lana.*



Hier skeerter eë het schaep, eë ander sbeurt het verckē;  
Hy laet ons, met gemack, hier op een weynig merckē;

Die wyse man skeer 'n skaap, die gek 'n vark . . .  
„Besin eer jy begin”, sou ons van hierdie afdruk kon sê: „'n Uitstekende leuse om in gedagte te hou by die beplanning van 'n aankoop.”

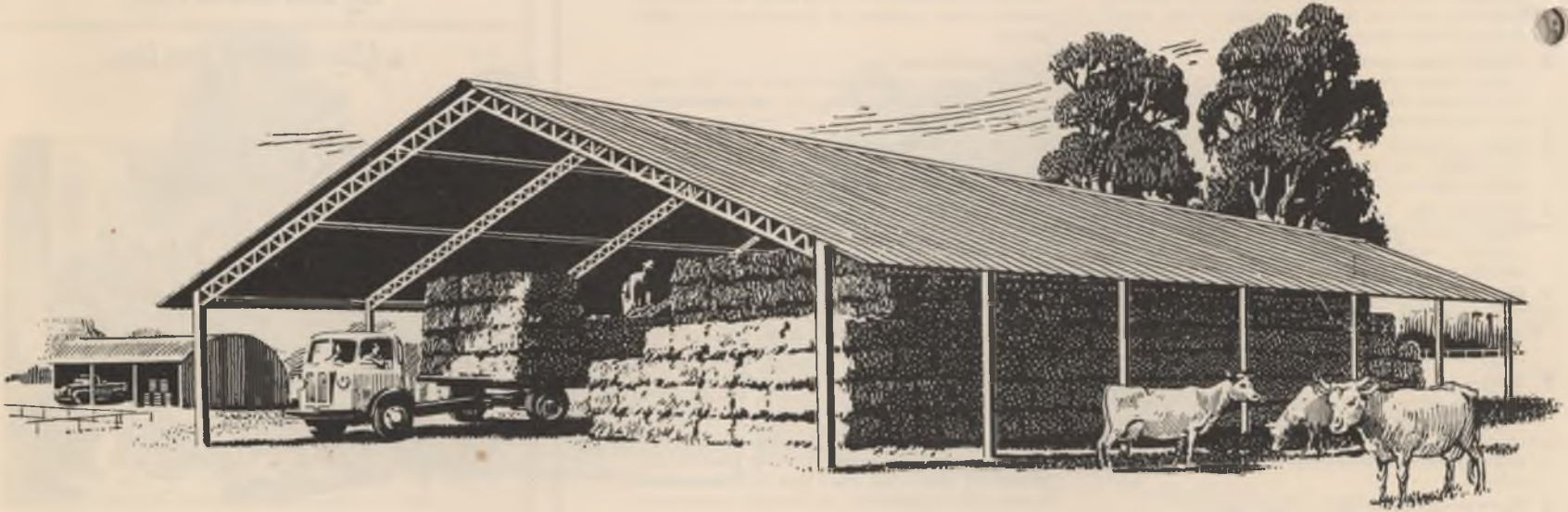
**GUARANTEE**

„PALMER” sheds are unconditionally guaranteed against faulty workmanship and material for an indefinite period.

**WAARBORG**

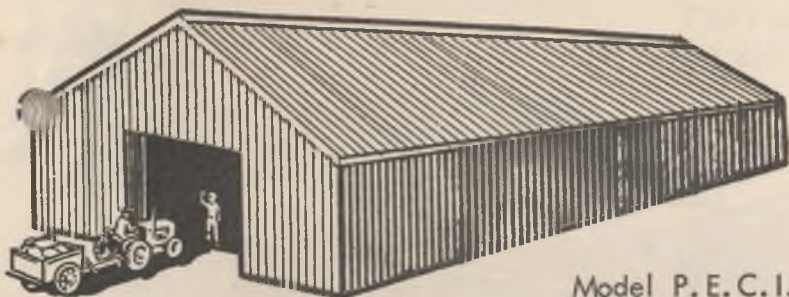
„PALMER”-skure is vir 'n onbepaalde tydperk onvoorwaardelik gewaarborg teen fabrieksfoute in afwerking en materiaal.

A TYPICAL **PALMER** STRUCTURE DESIGNED,  
MANUFACTURED, ERECTED TO YOUR SPECIFICATION

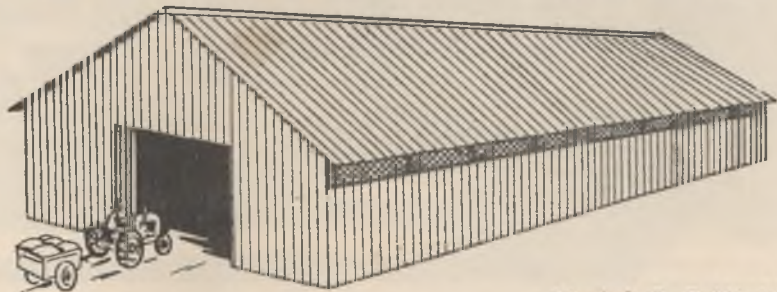


'N TIPIESE **PALMER**-STRUKTUUR ONTWERP, VERVAARDIG,  
OPGERIG VOLGENS U SPESIFIKASIE

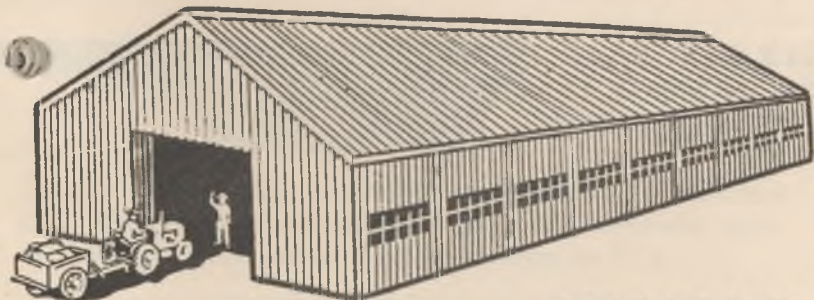
# NOG PALMER-SKURE



Model P.E.C.I.

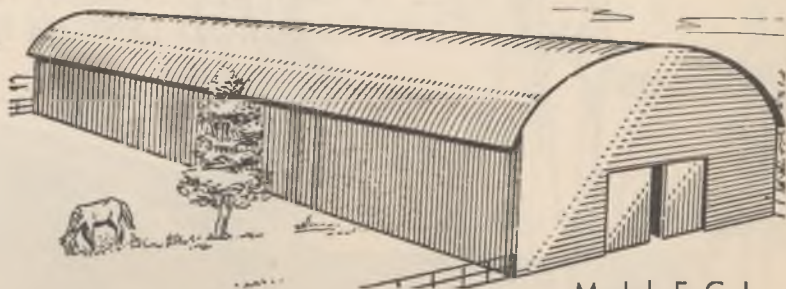


Model P.E.W.N.

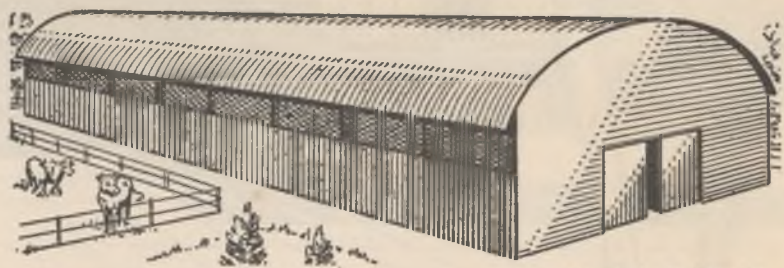


Model P.E.H.O.

# MORE PALMER SHEDS



Model E. C. I.



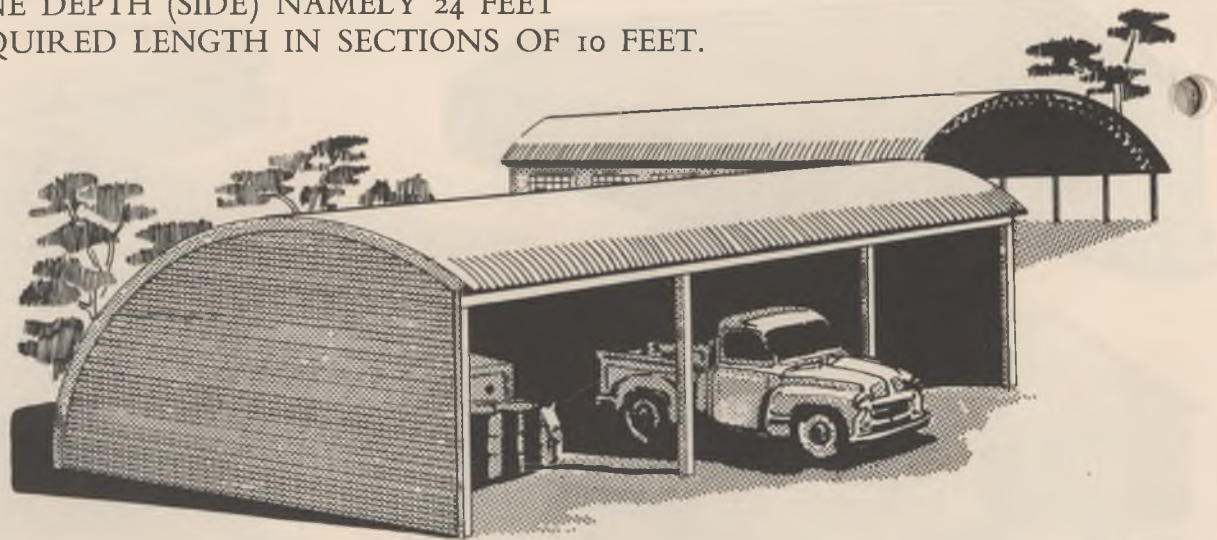
Model E. W. N.



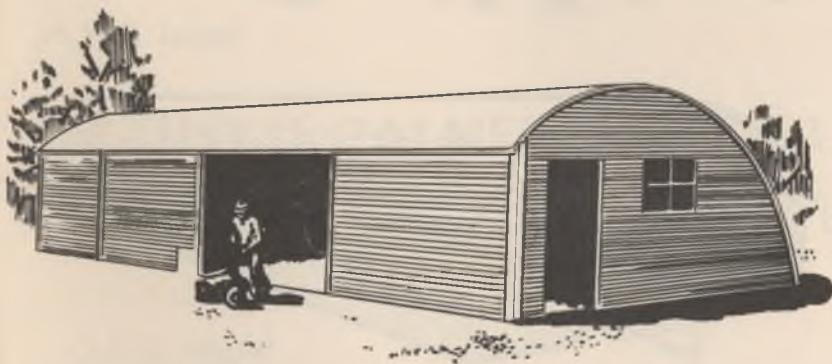
Model E. H. O.

# PALMER 24

AVAILABLE IN ONE DEPTH (SIDE) NAMELY 24 FEET  
AND IN ANY REQUIRED LENGTH IN SECTIONS OF 10 FEET.



PALMER MODEL ESO

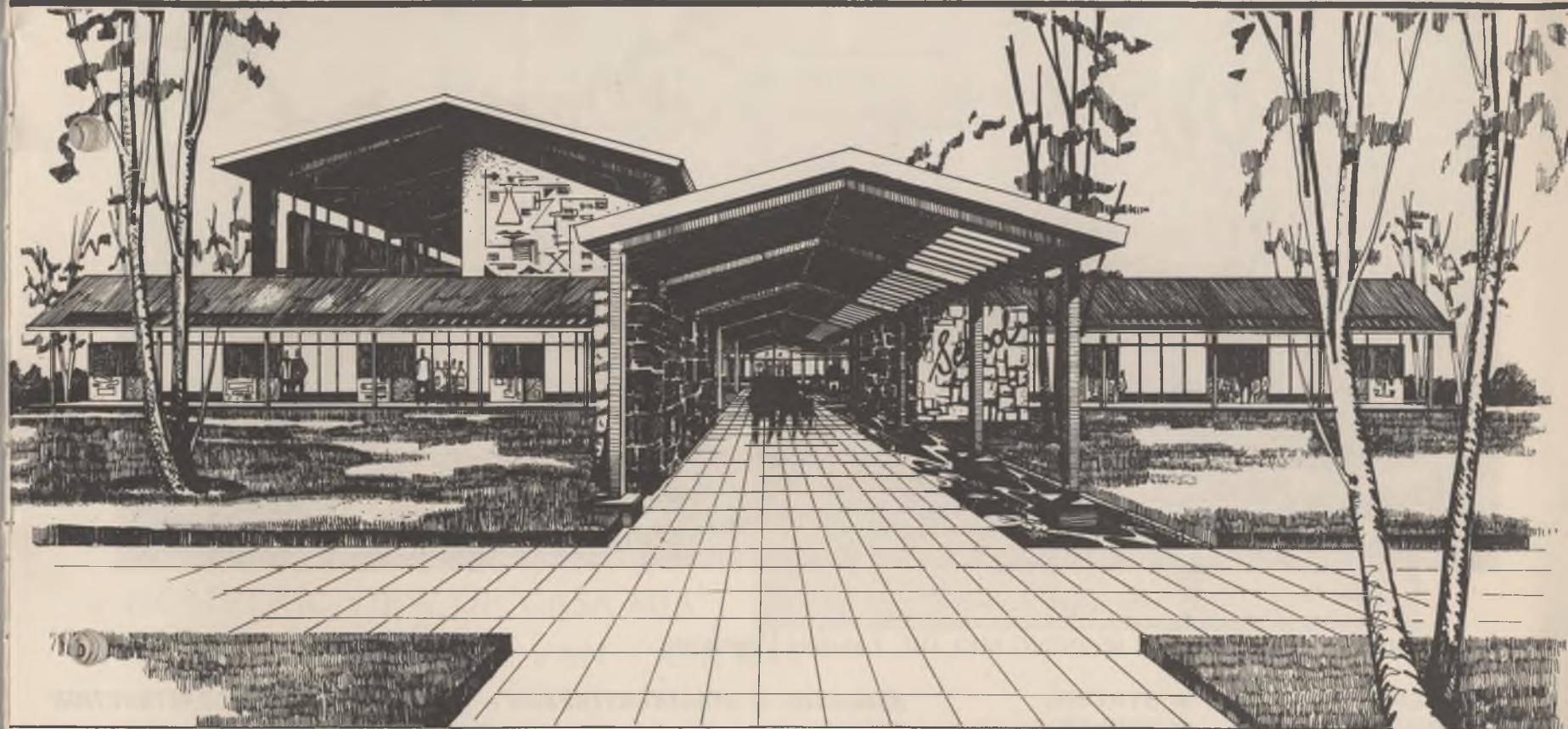


VERKRYGBAAR IN EEN BREEDTE (SYKANT),  
EN IN ENIGE LENGTE (FRONT)  
IN SEKSIES VAN 10 VOET.

## SCHOOL DESIGN IN STEEL



## SKOOLONTWERP IN STAAL



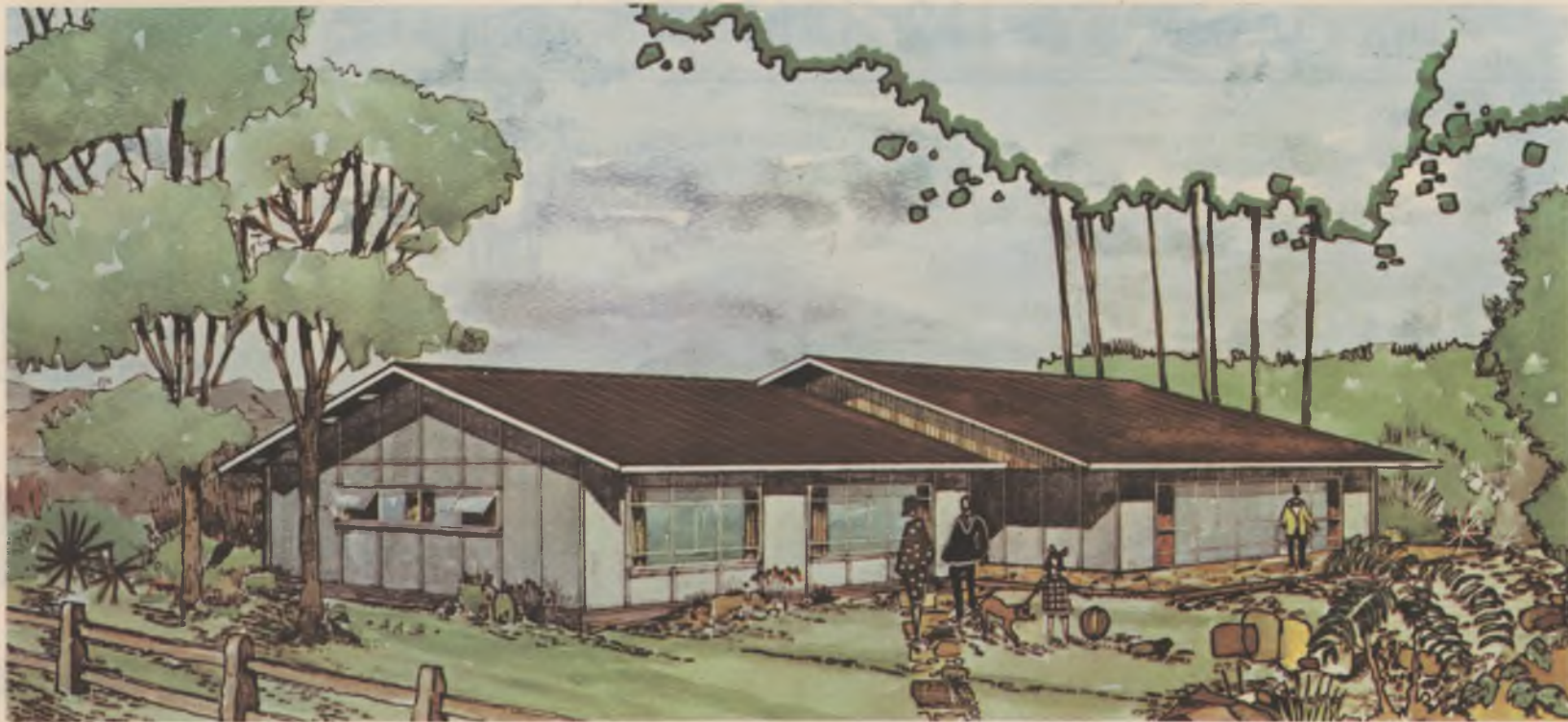
*Skole is een van vele staalstructure wat National & Overseas D.C. (Edms) Bpk. gereeld aan die Staat en aan Provisisiale owerhede verskaf . . . sien ook ons pawiljoen-ontwerp op bl. II.*

*„Ons sal met genoeë saamwerk met enige Argitek of Siviele Ingenieur uitgesoek deur kliënte.”*

*Schools are one of many types of steel structures which National & Overseas D.C. (Pty) Ltd. regularly supply to Government and Provincial authorities . . . see also our grandstand design on page II.*

*“We will gladly co-operate with any Architect or Civil Engineer selected by clients.”*

THE PRE-CONSTRUCTED HOME WITH THE *Luxury Look*



DIE VOORAF-VERVAARDIGDE WONING MET DIE *Luukse Voorkoms*

- |             |               |
|-------------|---------------|
| * STERK     | * STRONG      |
| * DUURSAAM  | * DURABLE     |
| * MODERN    | * MODERN      |
| * GERIEFLIK | * COMFORTABLE |
| * GESELLIG  | * COSY        |
| * GOEDKOOP  | * CHEAP       |

*Specialiste in STAALKONSTRUKSIE — Specialists in STEEL CONSTRUCTION*

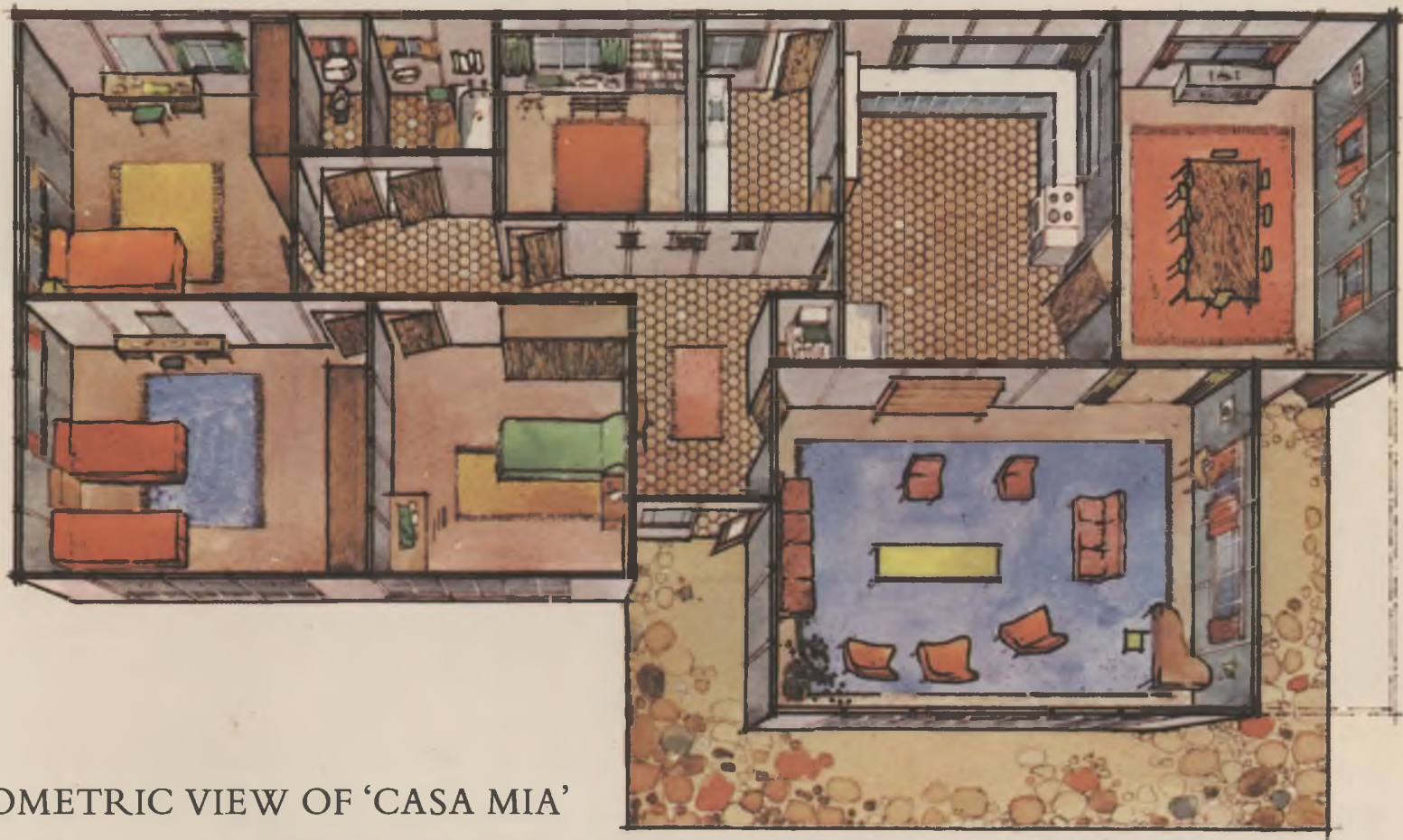
**NATIONAL & OVERSEAS D.C. (PTY) LTD.**

TELEGRAMME/TELEGRAMS "NODCORP" — TEL. 82341 — POSBUS/P.O. BOX 977 — BLOEMFONTEIN

*Verskaffers aan die Regering*

*Suppliers to the Government*





ISOMETRIC VIEW OF 'CASA MIA'

ISOMETRIESE AANSIG VAN 'CASA MIA'

*BOUREGULASIES wissel, en in sommige munisipale gebiede stem voorafvervaardigde wonings nie met die plaaslike kode ooreen nie. Voornemende kliënte word aangeraai om vooraf seker te maak dat hul voorgestelde gebou deur die plaaslike owerheid goedgekeur sal word.*

*BUILDING REGULATIONS vary, and in some municipal areas preconstructed homes do not conform to the local code. Prospective clients are advised to make certain beforehand that their proposed building will be approved by the local authority.*

**Collection Number: A1434**

**Colin Goodman Papers, 1930-1972**

**PUBLISHER:**

*Publisher:-* Historical Papers Research Archive

*Location:-* Johannesburg

©2014

**LEGAL NOTICES:**

**Copyright Notice:** All materials on the Historical Papers website are protected by South African copyright law and may not be reproduced, distributed, transmitted, displayed, or otherwise published in any format, without the prior written permission of the copyright owner.

**Disclaimer and Terms of Use:** Provided that you maintain all copyright and other notices contained therein, you may download material (one machine readable copy and one print copy per page) for your personal and/or educational non-commercial use only.

People using these records relating to the archives of Historical Papers, The Library, University of the Witwatersrand, Johannesburg, are reminded that such records sometimes contain material which is uncorroborated, inaccurate, distorted or untrue. While these digital records are true facsimiles of paper documents and the information contained herein is obtained from sources believed to be accurate and reliable, Historical Papers, University of the Witwatersrand has not independently verified their content. Consequently, the University is not responsible for any errors or omissions and excludes any and all liability for any errors in or omissions from the information on the website or any related information on third party websites accessible from this website.

This document is part of a collection held at the Historical Papers Research Archive, The Library, University of the Witwatersrand, Johannesburg, South Africa.