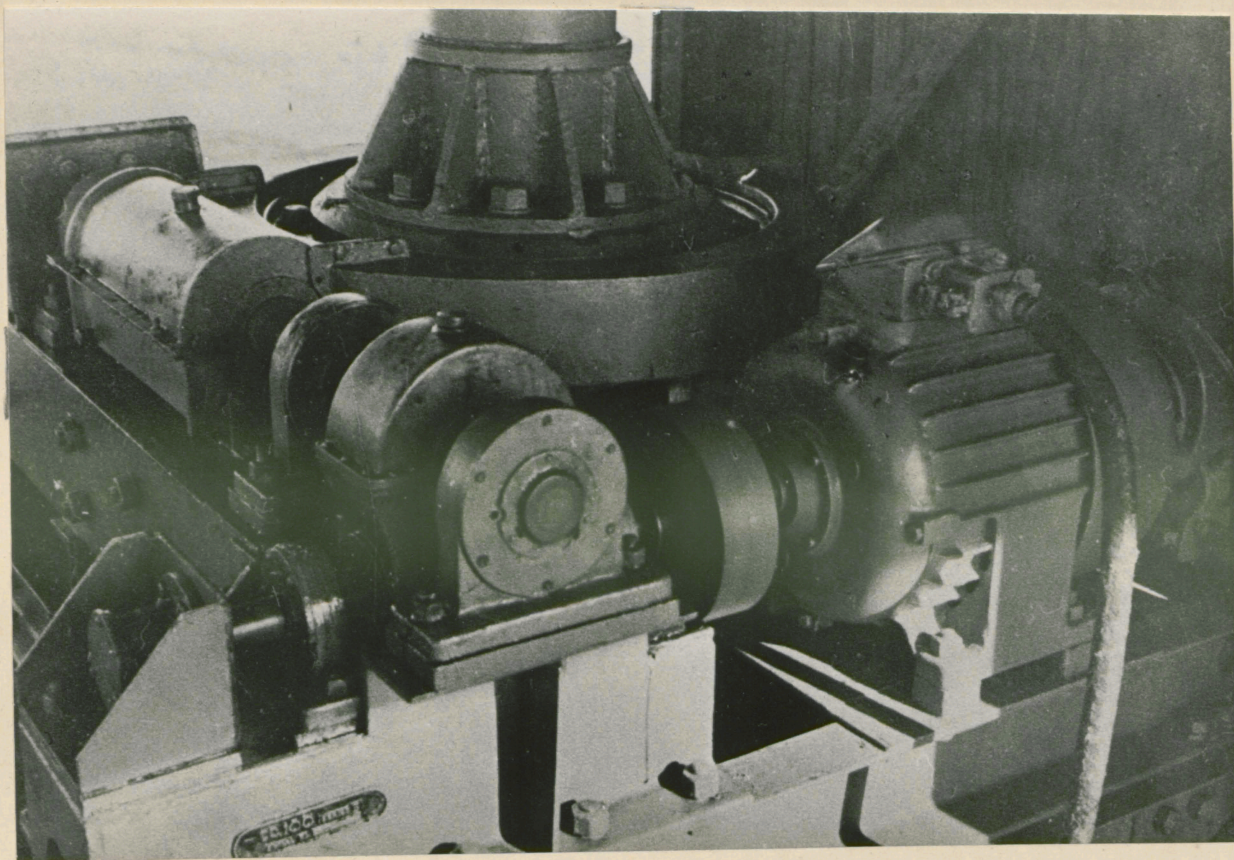
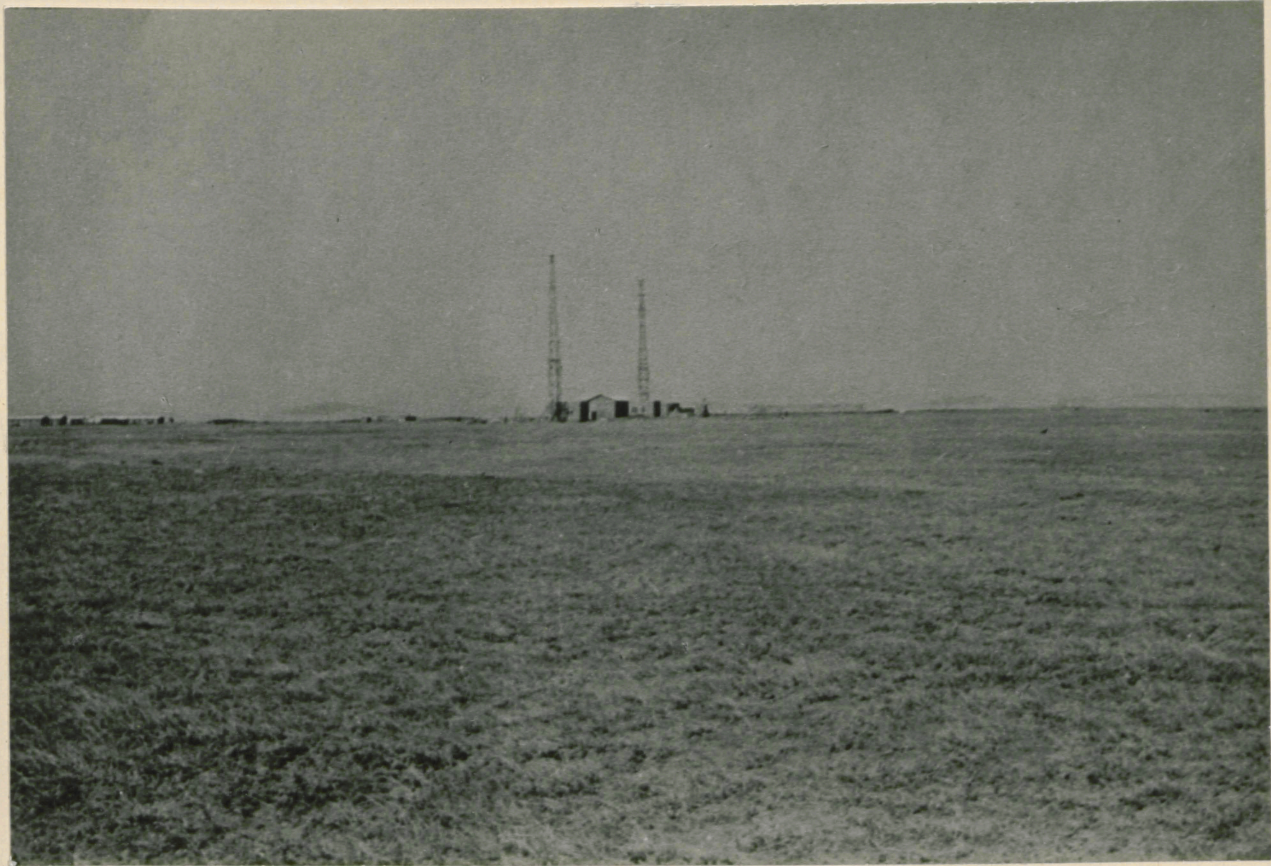


THE TYPE OF PICTURE DISPLAYED ON THE RANGE DISPLAY
This shows a target about 10 miles distant from the station,
the bearing being given by the position of the aerial at the
instant the photograph was taken.



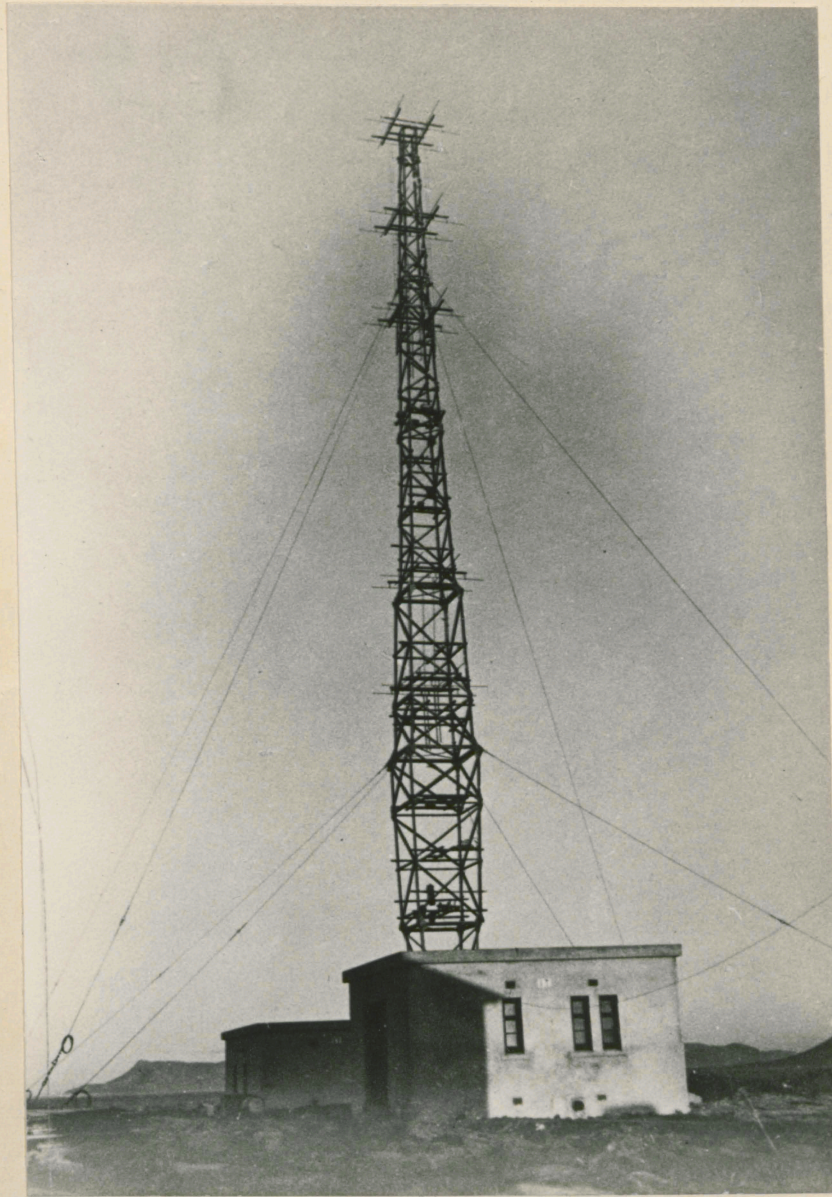
MOTOR DRIVEN TURNING GEAR ON THE C.O.L. AERIAL.



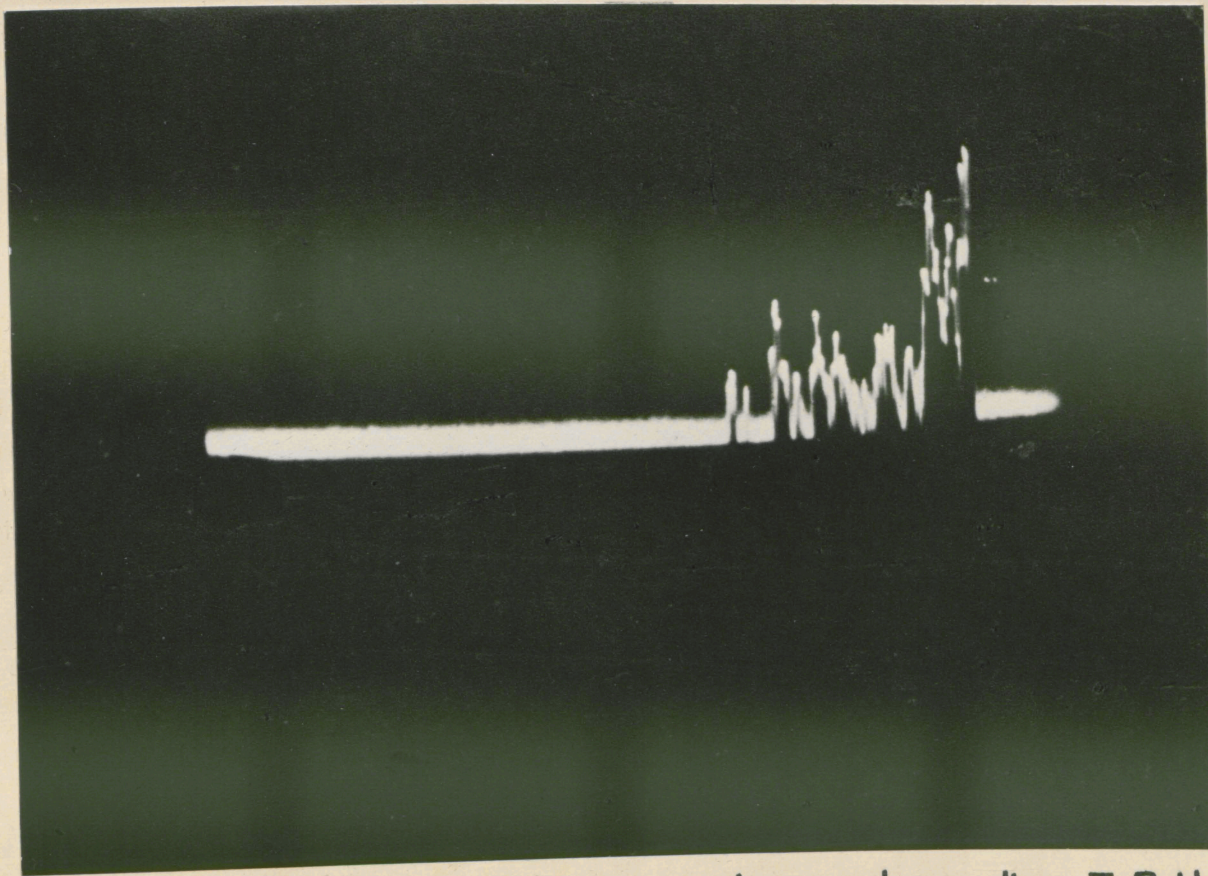
T.R.U. TYPE STATION of which 7 were installed and operated. These were used for aircraft location only, but had the extra facility of being able to determine the height of an aircraft as well as its range and bearing. The sites had to be as flat as possible and clear of obstructions for half a mile or more.



T.R.U. RECEIVER.



One of the 105 foot masts of which each T.R.U. station had two, one for receiving and one for transmitting.



This was the type of trace observed on the T.R.U., giving range only. Bearing and height were determined from auxiliary adjustments.

Collection Number: A3377

Collection Name: Radar at the Bernard Price Institute

PUBLISHER:

Publisher: Historical Papers Research Archive

Location: Johannesburg

©2014

LEGAL NOTICES:

Copyright Notice: All materials on the Historical Papers website are protected by South African copyright law and may not be reproduced, distributed, transmitted, displayed, or otherwise published in any format, without the prior written permission of the copyright owner.

Disclaimer and Terms of Use: Provided that you maintain all copyright and other notices contained therein, you may download material (one machine readable copy and one print copy per page) for your personal and/or educational non-commercial use only.

The original bound volume is stored at the Archives and Records office of the University of the Witwatersrand, Johannesburg, South Africa.