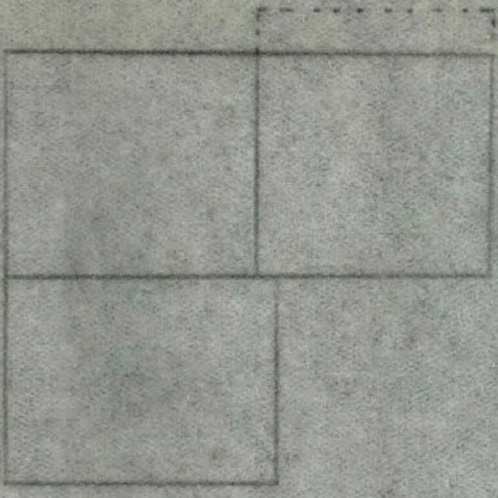


Finance
Housing File

886

3 ROOMED

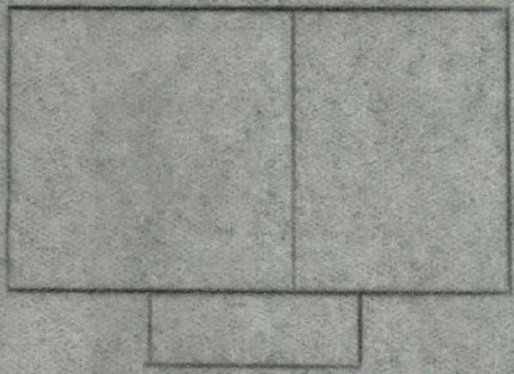
TOTAL COST: £179. 6. 7d.
602 SQ. FT. Incl. W.C.
COST PER SQ. FT. 5/11d.



Building Material	Quantity	£. s. d.
Stock Bricks	10,000	38.15. -
Air Bricks	8	8. -
Air Vents	8	6. -
Damp Course	1 Roll	2.12. 6.
Cement	25 pocks	5.16. 8.
P.Lime.	25 bags	7.10. -
Cr.Sand	3 yds	2. 5. -
Cr.Stone	4 yds	2.18. -
Sand	24 yds	3. - -
Timber 4 1/2" x 1 1/2"	184 ft.	6.10. 4.
3" x 2"	210 ft.	6.11. 3.
Doors	2 only	4.10. -
Corr:Iron.	306 ft	22.19. -
Ridging	5 lths	1.18. 9.
Roofing Screws	8 lbs	12. -
Lead Washers	8 lbs	14. -
Nails	8 lbs	6. -
Steel Windows	3	13.12. 9.
Putty	30 lbs	1. 2. 6.
Glass	52	2.12. -
Cost of Materials		£124.19. 9.
6% Handling Charges		4. 6.10.
Builders Charges		50. - -
		<hr/>
		£179. 6. 7.

2 ROOMED

TOTAL COST: £119.12/-
396 SQ. FT. INCL. W.C.
COST PER SQ. FT. 6/-



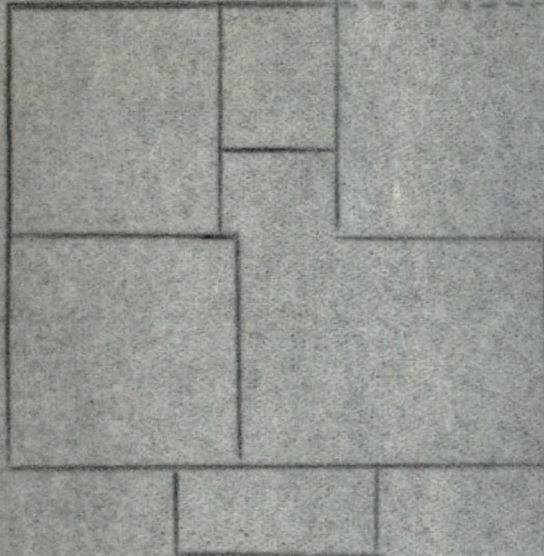
Building Material	Quantity	£. s. d.
Stock Brick	7,000	27. 2. 6.
Air Brick	4	4. -
Air Vents	4	3. -
Damp Course	1/2 roll	12. 6.
Cement	15 pks	3. 7. 6.
P.Lime	6 bags	1.16. -
Cr.Stone	3 yds	2. 3. 6.
Sand	8 yds	1. - -
Timber 3" x 2"	162 ft.	4.19. -
4 1/2" x 1 1/2"	128 ft.	4. 8. -
Doors	2 only	4.10. -
Steel Windows	2	14. 8. 7.
Corr:Iron.	28/9'	16.18. -
Ridging	5 lths	1.18. 9.
Roofing Screws	4 lbs	5. 6.
Lead Washers	4 lbs	7. -
Nails	5 lbs	4. 2.
Total Cost Materials		£86. 8. -
5% Handling Charges		3. 4. -
Builders Charges		30. - -
		<hr/>
		£119.12. -

3 ROOMED

TOTAL COST: £188.14.10d.

700 sq.ft. Incl. W.C.

COST PER SQ.FT. 5/4d.



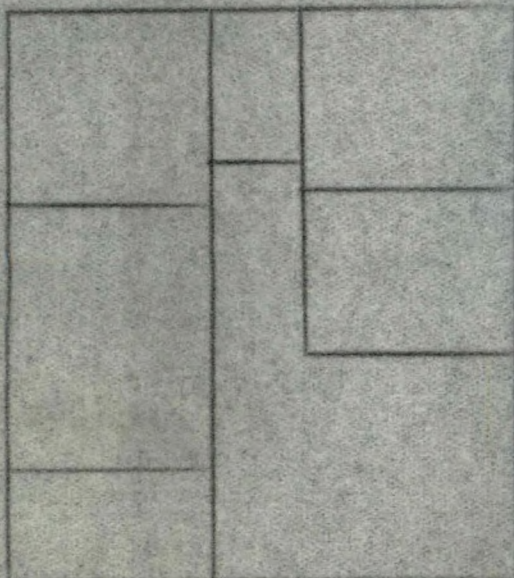
Building Material	Quantity	£.	s.	d.
Stock Brick	12,000	46.10.	-.	-.
Air Brick	8	8.	-.	-.
Air Vents	8	6.	-.	-.
Damp Course	1/2 roll.	2.	-.	-.
Cement	25 pocks.	5.16.	8.	-.
P.Lime.	25 bags.	7.10.	-.	-.
Cr. Sand.	3 yds.	2.	5.	-.
Cr. Stone.	3 yds.	2.	3.	6.
Sand	22 yds.	2.15.	-.	-.
Timber 3" x 2"	156 ft.	4.17.	6.	-.
4 1/2" x 1 1/2"	285 ft.	10.	2.	6.
Doors	3	4.10.	-.	-.
Steel Windows	3	10.12.	3.	-.
Glass	48	2.	8.	-.
Putty	20 lbs	15.	-.	-.
Corr: Iron.	336 ft	13.18.	4.	-.
Ridging	15 ft	5.16.	3.	-.
Roofing Screws	8 lbs	9.	4.	-.
Lead Washers	8 lbs	14.	-.	-.
Wire Nails	10 lbs	7.	6.	-.
Total cost of Materials		£124.	4.	10d.
6% Handling Charges		4.10.	-.	-.
Builders Charges		60.	-.	-.
		<hr/>		
		£188.14.	10d.	

5 ROOMS AND PANTRY:

823 sq.ft. Incl. W.C.

TOTAL COST: £250.10. 2d.

COST PER SQ.FT. 6/1d.



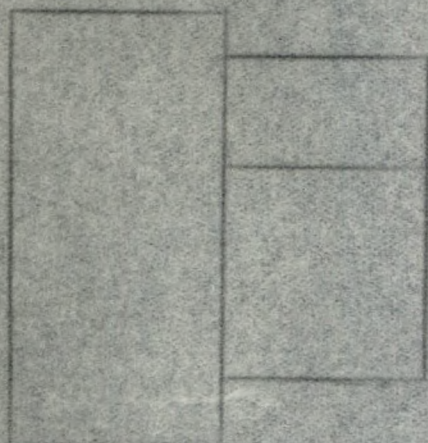
Building Material	quantity	£.	s.	d.
Stock Brick	12,000	46.10.	-.	-.
Air Brick	10	10.	-.	-.
Air Vents	10	7.	6.	-.
Damp Course	1/2 roll	1.10.	-.	-.
Cement	30 pocks.	6.15.	-.	-.
P. Lime.	25 pocks.	7.10.	-.	-.
Cr. Sand.	4 yds.	2.18.	-.	-.
Cr. Stone.	4 yds.	3.	-.	-.
Sand	24 yds.	3.	-.	-.
Timber 3" x 2"	268 ft.	8.	2.	3.
4 1/2" x 1 1/2"	595 ft.	20.10.	11.	-.
Doors	2 only	5.	-.	-.
Steel Windows	4	24.15.	2.	-.
Glass	96	3.12.	-.	-.
Putty	30 lbs	1.	2.	6.
Corr: Iron.	2/7' 48/10'	37.1.	-.	-.
Ridging	7 ft	2.14.	3.	-.
Roofing Screws	6 lbs	7.	-.	-.
Lead Washers	6 lbs	10.	6.	-.
Wire Nails	8 lbs	4.	8.	-.
Cost of Materials		£176.	1.	5.
6% Handling Charges		4.	8.	9.
Builders Charges		70.	-.	-.
		<hr/>		
		£250.10.	2.	

3 ROOMED

TOTAL COST: £117.16. 1d.

462 sq.ft. Incl. W.C.

COST PER SQ.FT. 5/-



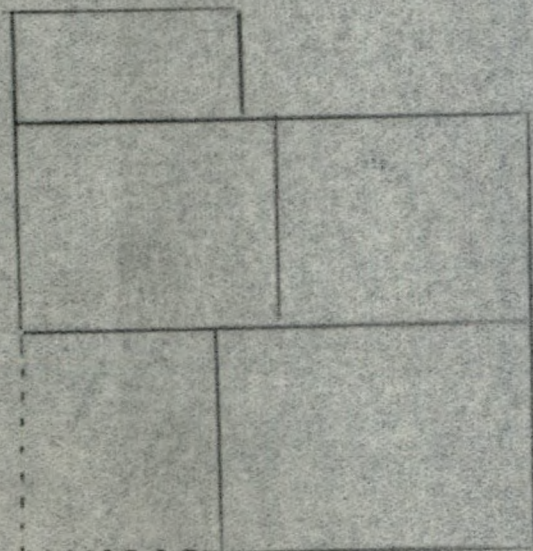
Building Material	Quantity	£. s. d.
Stock Brick	4,000	15.10. -.
Le. Cr. Brick	500	2.10. -.
Air Brick	6	6. -.
Air Vents	6	4. 6.
Damp Course	1 roll	1. 6. 3.
Cement	20 pocks	4.13. 4.
P.Lime.	15 pocks	4.10. -.
B.Lime.		
Cr. Sand.	3 yds	2. 5. -.
Cr. Stone.	3 yds	2. 3. 6.
Sand	22 yds	2.15. -.
Timber 3" x 2"	145	4. 8. 5.
4½" x 1½"	168	5.15. 6.
Doors	2	4.10. -.
Wood Windows	4	3. 5. 4.
Steel		
Corr:Iron.	228	17. 2. -.
Ridging	4 lths	1.11. -.
Roofing Screws	4 lbs	4. 8.
Lead Washers	4 lbs	7. -.
Nails	2 lbs	1. 6.
Total Cost Materials		£73. 9. -.
6% Handling Charges		4. 7. 1.
Builders Charges		40. -. -.
		<u>£117.16. 1.</u>

3 ROOMED

TOTAL COST £180.15. -.

700 sq.ft. Incl. W.C.

COST PER SQ.FT. 5/2d.



Building Material	Quantity	£. s. d.
Stock Brick	10,000	38.15. -.
Air Brick	6	6. -.
Air Vents	6	4. 6.
Damp Course	1 yd.	2. 7. 6.
Cement	20 pocks	4.13. 4.
P.Lime	20 pocks	6. -. -.
B.Lime		
Cr. Sand.	4 yds	3. -. -.
Cr. Stone.	4 yds	2.18. -.
Sand	20 yds	2.10. -.
Timber 3" x 2"	261	7.19. 6.
4½" x 1½"	197	6.15. 6.
Doors	2	4.10. -.
Steel Windows	3	10.12. 3.
Glass "	48	2. 8. -.
Putty	20 lbs	15. -.
Corr:Iron.	383	28.14. 6.
Ridging	5 lths	1.18. 9.
Roofing Screws	10 lbs	11. 8.
Lead Washers	10 lbs	17. 6.
Nails	8 lbs	8. -.
Total Cost Materials		£126. 5. -.
6% Handling Charges		4.10. -.
Builders Charges		50. -. -.
		<u>£180.15. -.</u>

3 ROOMED

TOTAL COST: £181. 2. 4d.

700 SQ.FT. Incl. W.C.

COST PER SQ.FT. 5/2d.



Building Material Quantity. £. s. d.

Stock Brick	10,000	38.15. -.
Air Brick	6	6. -.
Air Vents	6	4. 6.
Damp Course	1 Roll	2.12. 6.
Cement	20 Pocks.	4.13. 4.
P.Lime.	20 Bags.	6. -.
Cr. Sand	4 yds.	3. -.
Cr. Stone	4 yds.	2.18. -.
Sand	20 yds.	2.10. -.
Timber 3" x 2"	261	7.19. 6.
4½" x 1½"	197	6.19. 7.
Doors	2 only	4.10. -.
Steel Windows	3	10.12. 3.
Glass	48	2. 8. -.
Putty	20 lbs	15. -.
Corr:Iron.	383	28.14. 6.
Ridging	5 lths	1.18. 9.
Roofing Screws	10 lbs	15. -.
Lead Washers	10 lbs	17. 6.
Nails	8 lbs	8. -.

Total Cost Materials	£126.17. 5.
6% Handling Charges	4. 4.11.
Builders Charges	50. -.
	<u>£181. 2. 4.</u>

4 ROOMED

TOTAL COST £124. 3. 2d.

498 sq.ft. Incl. W.C.

COST PER SQ.FT. 5/-¹/₃d.



Building Material Quantity £. s. d.

Stock Brick	7,000	27. 2. 6.
Le. Cr. Brick.	200	1. -.
Air Brick	8	8. -.
Air Vents	8	6. -.
Cement	20 pocks	4.10. -.
P.Lime.	12 bags	3.12. -.
Cr. Sand	1 yd.	15. -.
Cr. Stone	3 yds.	2. 3. 6.
Sand	14 yds.	1.15. -.
Timber 3" x 1½"	52 ft.	1. 3.10.
3" x 2"	150 ft.	4.10. 8.
4½" x 1½"	190 ft.	6.10. 8.
Doors	2 only	4.10. -.
Wood Windows	8 only	8. 5. 6.
Corr; Iron.	35/9'	20. 5. -.
Ridging	5 lths	1.18. 9.
Roofing Screws	4 lbs	4. 8.
Lead Washers	4 lbs	8. -.
Nails	3 lbs	1. 9.
Hinges	4 pairs	2. 4.

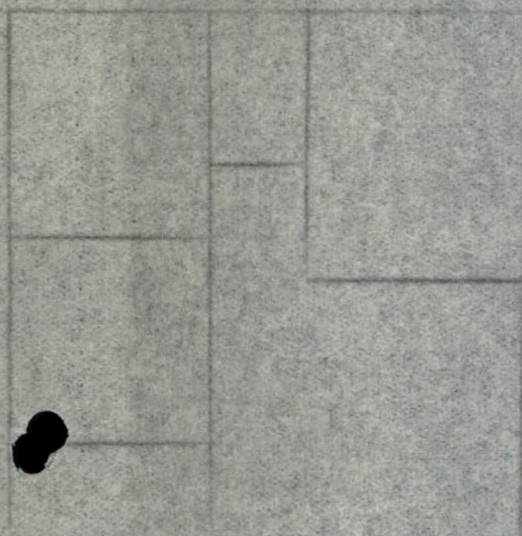
Total Cost Materials	£89.13. 2.
5% Handling Charges	4.10. -.
Builders Charges	30. -.
	<u>£124. 3. 2d.</u>

4 ROOMS, PASSAGE, BATH ROOM

TOTAL COST: £261. 5.10d.

774 sq.ft. Incl. W.C.

COST PER SQ.FT. 6/9d.



Building Material Quantity £. s. d.

Stock Bricks	11,500	44.11. 3.
Air Brick	8	8. -.
Air Vent	8	6. -.
Damp Course	1 Roll	5. -.
Cement	25 pkts.	5.12. 6.
P. Lime	6 bags.	2. 2. -.
B. Lime	12 bags.	3.12. -.
Cr. Sand	1 yd.	15. -.
Cr. Stone	3 yds.	2. 3. 6.
Sand		
Timber 3" x 2"	582 ft.	18. -. 2.
4½" x 1½"	510 ft.	19. 1. 9.
6" x 1" Door Frames	66 ft.	3. 3. 3.
9" x 1½"	80 ft.	5.10. -.
Doors	2 only	5. -. -.
Steel Windows		24.17. 1.
Corr. Iron	49/10'	36.15. -.
Ridging	15 lths	5.16. 3.
Roofing Screws	8 lbs	9. 4.
Lead Washers	9 lbs	15. 9.
Nails	9 lbs	5. 4.

Total Cost Material	180. 9. 2.
5% Handling Charges	5.16. 8.
Builders Charges	75. -. -.

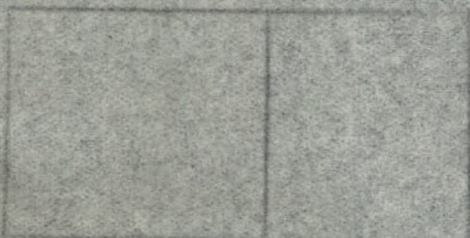
£261. 5.10.

2 ROOMED

TOTAL COST: £79. -. 3.

288 sq.ft. Incl. W.C.

COST PER SQ.FT. 5/5½d.



Building Material Quantity £. s. d.

Stock Brick	5,000	19. 7. 6.
Le Cr. Brick.	145	14. 6.
Air Brick	4	4. -.
Air Vents	4	3. -.
Damp Course	½ Roll	12. 6.
Cement	8 Pocks.	1.16. -.
P. Lime	6 Bags	1.16. -.
Cr. Sand	½ yd.	7. 6.
Cr. Stone	2 yds.	1. 9. -.
Sand	6 yds.	15. -.
Timber 3" x 1½"	92 ft.	2. 2. -.
4½" x 1½"	96 ft.	3. 6. -.
Doors	2 only	4.10. -.
Wood Windows	4 only	4. 2. 6.
Corr: Iron.	6/10'	12.12. -.
Ridging	4 lths	1.11. -.
Roofing Screws	4 lbs	5. 8.
Lead Washers	4 lbs	8. 4.
Nails	1 lb	8. -.
Hinges	2 prs	1. 2.

Total Cost of Material	56. 4. 6.
5% Handling Charges	2.16. 3.
Builders Charges	20. -. -.

£79. -. 3.

4 ROOMS - PANTRY - W.C.

TOTAL COST: £234.15. 7d.

COST PER SQ.FT. 6/4d.

742 SQ.FT. INCL. W.C.

<u>Building Material</u>	<u>Quantity</u>	<u>£. s. d.</u>
Stock Brick	13,000	50. 7. 6.
Air Brick	9	9. -.
Air Vents	9	6. 9.
Damp Course	1 Roll	5. -.
Cement	25 pkts.	5.12. 6.
P.Lime	6 bags.	2. 2. -.
B.Lime	12 bags.	3.12. -.
Cr.Sand.	1 yd.	15. -.
Cr. Stone	3 yds.	2. 3. 6.
Sand		
Timber 3" x 1½"		
3" x 2"	250 ft.	7.12.10.
4½" x 1½"	610 ft.	17.10. 8.
Door Frames 6" x 1"	64 ft.	3. 1. 4.
9" x 1½"		
Doors	2 only	8. -. -.
Wood Windows		
Steel Windows		24.17. 1.
Corr:Iron.	45/10'	33.15. -.
Ridging	5 lths	1.18. 9.
Roofing Screws	6 lbs	7. -.
Lead Washers	6 lbs	10. 5.
Nails	8 lbs	4. 8.
Total cost of Materials		£164.11. 1.
5% Handling Charges		5. 4. 6.
Builders Charges		65. -. -.
		<u>£234.15. 7.</u>



Collection Number: AD1715

SOUTH AFRICAN INSTITUTE OF RACE RELATIONS (SAIRR), 1892-1974

PUBLISHER:

Collection Funder:- Atlantic Philanthropies Foundation

Publisher:- Historical Papers Research Archive

Location:- Johannesburg

©2013

LEGAL NOTICES:

Copyright Notice: All materials on the Historical Papers website are protected by South African copyright law and may not be reproduced, distributed, transmitted, displayed, or otherwise published in any format, without the prior written permission of the copyright owner.

Disclaimer and Terms of Use: Provided that you maintain all copyright and other notices contained therein, you may download material (one machine readable copy and one print copy per page) for your personal and/or educational non-commercial use only.

People using these records relating to the archives of Historical Papers, The Library, University of the Witwatersrand, Johannesburg, are reminded that such records sometimes contain material which is uncorroborated, inaccurate, distorted or untrue. While these digital records are true facsimiles of paper documents and the information contained herein is obtained from sources believed to be accurate and reliable, Historical Papers, University of the Witwatersrand has not independently verified their content. Consequently, the University is not responsible for any errors or omissions and excludes any and all liability for any errors in or omissions from the information on the website or any related information on third party websites accessible from this website.

This document forms part of the archive of the South African Institute of Race Relations (SAIRR), held at the Historical Papers Research Archive at The University of the Witwatersrand, Johannesburg, South Africa.