

AUG 3 1958



Alexandra Health Centre
and University Clinic

W.O. 274



**ANNUAL
REPORT**

1st APRIL, 1957 - 31st MARCH, 1958

ALEXANDRA HEALTH CENTRE AND UNIVERSITY CLINIC

BOARD OF MANAGEMENT, 1957/58.

Mr. Justice O. D. SCHREINER, Chairman
Mr. Justice W. H. RAMSBOTTOM, Vice-Chairman
Mrs. R. S. WELSH, Hon. Secretary
Miss C. SMITH, Assistant Hon. Secretary
Mrs. J. M. HYSLOP, Hon. Treasurer

Mrs. W. ARONSOHN.
Mr. P. J. BADENHORST.
Rev. LEE BERGSMAN.
Dr. JAMES BLACK.
Mrs. H. J. BARKER.
Professor G. A. ELLIOT.
Dr. S. GAUNTLETT.
Professor O. S. HEYNS.
Professor J. M. HYSLOP.
Professor G. B. LAUF.

Professor M. G. MARWICK.
Miss E. J. S. MOODIE.
Mr. T. D. NEL.
Mr. J. O'REILLY.
Mrs. A. E. PAYNE.
Mrs. E. C. PHILLIPS.
Mrs. W. G. SUTTON.
Mr. I. R. TAYLOR.
Mr. R. S. WELSH.
Dr. A. B. XUMA.

S.M.C. Representatives:

Mr. M. PULER (April to August, 1957).
Miss E. BOES (Sept., 1957, to March, 1958).

S.R.C. Representatives:

Mr. JOHN HARRIS (April to Oct., 1957).
Mr. CLIVE ROSENDORFF (Nov., 1957, to May, 1958).

ALEXANDRA HEALTH CENTRE AND UNIVERSITY CLINIC

ANNUAL REPORT

REPORT OF THE BOARD OF MANAGEMENT FOR THE YEAR ENDED 31st MARCH, 1958

It is right, I think, to mention at the beginning of this report the fact that during the year under review the functions of the local authority, the Alexandra Health Committee, were taken over by the Peri-Urban Areas Health Board.

So far as the Clinic is concerned the change was carried out with no dislocation of services. It will be remembered that since 1950, when the Government Health Centre ceased to function, we have been carrying out the T.B. and V.D. services on behalf of and by special arrangement with the Alexandra Health Committee. It is possible that it may be found to be more convenient for all parties if the Peri-Urban Areas Health Board itself carries out these services, which it is their statutory duty to perform, hiring the requisite accommodation from the Clinic. There would, as was the case before 1950, be separate but co-operating organisations.

When the Peri-Urban Areas Health Board took over the duties of the local authority at Alexandra it was publicly announced that large sums were to be made available for improving conditions in the Township. It is much to be hoped that the expectations engendered thereby will be fulfilled.

The Clinic is directly interested in the early provision of street lighting, which will reduce crimes of violence (the victims of which are dealt with in large numbers by the Clinic). It will also enable our nurses to pay district visits at night more safely and will make it practicable for law-abiding residents in the Township to attend lectures and films on health subjects at the Clinic after dark.

The Clinic is also directly interested in improved sanitation and the consequent reduction of germ-borne diseases. And, finally, the Clinic is directly interested in the improvement of the Township's streets, the evil condition of which is responsible for a large part of our ruinous motor car expenses.

We are thus most anxious that the foreshadowed improvements will be brought about with the least possible delay.

On the year's work the Clinic made a loss of £2,030, which is the biggest loss that we have suffered since we began to function. It is almost 50 per cent. more than the previous record loss of £1,374 incurred in 1947. During the year under review our income was practically stationary—in fact, it only increased by £56—but our expenditure rose steeply. Salaries and wages were up by over £2,000, though it should be specially mentioned that the Sisters' salaries, board, etc., actually showed a small reduction. A saving in respect of maintenance (land and buildings) was counter-balanced by increases in Motor Car expenses (£573), Medical and Surgical supplies (£854), Printing and Stationery (£216), and some other items. These are matters which are engaging the Board's attention, with a view to effecting savings, if possible, in the current year. But the growth of the work inevitably leads to increasing expenditure.

It follows that our income must be raised, in order to restore past losses and to cover current expenditure. It will be observed that during the year under review, income from Governmental sources fell away slightly, while there was a small gain in revenue from patients' fees and contributions from the public. We are a voluntary body and this slight shift, proportionately, in the sources of our income is gratifying. But there is need for a further substantial improvement in the amounts received from non-Governmental sources. In this connection it is satisfactory to note that the activities of the Students' Rag Committee are now meeting with growing support from the public.

Important bequests have been received during the past year. The late Lt.-Col. J. K. F. Dobbs, a valued member of our Board and a friend of all of us, left us a motor car, the realised proceeds of which (£150) have been added to our Motor Car Replacement Account. From the estate of the late Mrs. Ann Prenter we received the munificent bequest of £1,000, which has been added to the Hall Building Fund. We are also most grateful for bequests from the estates of the late Daniel Kaplan (£250), the late A. J. Levy (£100) and the late Solomon Sive (£50). These gifts will help to restore our working capital.

In addition to the above-mentioned sum of £1,000, the Hall Building Fund received the sum of £942 5s. from the Rotary Club of Rosebank—this is the corrected figure of the fine gift referred to in last year's report. Also £100 from Mr. W. Aronsohn, £12 12s. from Mrs. O. I. Frankel and £25 from an anonymous donor. The Hall Fund now stands at £4,714 and the date at which we can undertake the completion of our original building scheme should not be far off. We are indeed in serious need of more room to carry out our work.

It is appropriate to mention in this connection the additions to the south side of the Clinic buildings that were made during the year, with monies provided by the Bantu Welfare Trust. These additions, which are being used for the expansion of the T.B. work, have been dedicated

to the late Mr. J. D. Rheinallt Jones, who advised and assisted Colonel James Donaldson when the latter established the Trust. We are most grateful to all those who helped to bring about this highly necessary extension to our buildings.

To our many supporters who have donated money and contributions in kind we again express our sincerest thanks. Their names are listed elsewhere. Again it is right to make special mention of the splendid gift of £1,000 from the Robert Niven Trust. The Trustees' continued support of the Clinic has for years been an important element in our financial structure.

We greatly regret to have to record the untimely death, since the close of the year under review, of Mr. A. M. Hagart, one of the Trustees. Our deepest sympathy is extended to Mrs. Hagart.

Our sympathy also goes to Miss E. J. S. Moodie, for many years our Honorary Treasurer, in the loss she has suffered by the death, at the age of 96, of her mother, Mrs. J. A. Moodie. Mrs. Moodie was for many years a most welcome figure at our Annual Meetings and other Clinic functions.

At the end of the year under review, Dr. S. P. Jacobson retired from the post of Medical Superintendent, which he had held since August 1955. His full report, which gives a good picture of the vast amount of work done during the year, will repay careful study. We extend to him our best wishes in the line of work on which he is now engaged. His successor is Dr. L. Granat, who knows the work well since he has been at the Clinic since 1955. Assisted by Dr. F. Schneier, who has also been with us for some time, and by the other members of the Medical Staff, Dr. Granat is carrying on the exacting work in our best traditions.

During the year Sister Stephen, who had served the Clinic splendidly, returned overseas, and her place was taken by Sister Canisius, who is now running the nursing side with smooth efficiency. The Sisters and nurses have again done an excellent year's work under trying conditions.

On the administrative side, Mrs. Hurst, who had been doing efficient work with us since 1954, left, and we were most fortunate in securing the services of Mrs. Carter, who, with Mrs. Mosenthal, has been doing the office work most satisfactorily.

The clerical staff, whose work is highly important, have carried out their duties very satisfactorily during the year. We are grateful to them and to the other members of our staff who all contribute to the efficient running of the Clinic.

The dental unit, operated by the Coronation Dental Infirmary, continues its invaluable work. Given more funds and more accommodation it could be substantially expanded with great benefit to the comfort and general health of the township residents.

Voluntary helpers have again been prominent in forwarding the Clinic's work. In general their efforts must remain anonymous, though

not for that reason less appreciated. I should, however, mention that Mrs. A. E. Payne, who has long given us valuable help in dealing with Workmen's Compensation cases, has joined the Board, as have Mrs. W. G. Sutton, the wife of the Principal of the University, Mrs. H. J. Barker, who works actively for the Alexandra Anti-T.B. Association, and Miss C. Smith, who has added to her secretarial duties for the Convocation of the University the duties of Assistant Hon. Secretary. A most promising recruit to the Clinic's voluntary helpers is Mr. F. Gygax, who will, we hope, be joining the Board before long.

The S.A. Red Cross Society, through Detachment A.D. 90 (Commissioner Constine), has again done a marvellous job of work at the week-ends, when every bit of help is needed.

Messrs. Vaughan, Key & Payne, our honorary auditors, have again fully earned the deep gratitude which we feel towards them.

O. D. SCHREINER,
Chairman.

MEDICAL SUPERINTENDENT'S ANNUAL REPORT FOR THE YEAR 1st APRIL, 1957, TO 31st MARCH, 1958

As will be seen from our figures in this Report, the work of the Clinic continues to increase. Generally speaking, this has been characteristic during the years and gives satisfaction on the one hand, and on the other a view that more preventive work could be done.

Better living conditions, more food and a development of self-respect would, it is obvious, prevent diseases and the numerous assaults which characterise Alexandra Township, especially at the week-ends. If this pertained, the figures would naturally diminish.

However, conditions being as they are, ill Africans must receive medical attention, and the Clinic is therefore doing good work.

STATISTICAL RETURNS

1. (a) CONSULTATIONS

	1953	1954	1955	1956	1957/58
1st Attendances	12,465	14,880	12,811	16,786	19,604
Repeat Attendances	31,239	37,423	25,612	25,522	32,941
Total	43,704	52,303	38,423	42,308	52,545

There is a very large increase in the consultations as depicted in these Returns. The total is approximately 25 per cent. above that of

the preceding year; this increase is partly due to the considerable number of patients seen during the Asian Flu epidemic which occurred during the months of July and August, 1957.

(b) Dressings and Treatment

	1953	1954	1955	1956	1957/58
1st Attendances	12,846	12,871	10,897	13,492	14,011
Repeat Attendances	26,216	26,924	33,216	39,938	47,857
Total	39,062	39,795	44,113	53,430	61,868

There has been an increase in the work of this Department.

(c) Laboratory Specimens

	1953	1954	1955	1956	1957/58
	3,681	3,951	4,290	3,781	5,342

2. DOMICILIARY CONSULTATIONS AND DISTRICT NURSING

(a) District Visits

	1953	1954	1955	1956	1957/58
Nurses	12,730	14,938	12,029	10,786	11,671
Sisters	468	597	1,529	738	447
Students	903	1,034	935	250	267
Doctors	2,433	1,859	1,349	2,311	2,940
Total	16,534	18,428	15,842	14,085	15,325

(b) Chronic Sick Visits

	1953	1954	1955	1956	1957/58
	1,193	432	559	1,255	1,656

District Visiting is a very important section of the work of the Clinic. It relieves the hospitals with regard to in-patient treatment. Again as explained in the last report, there has been an attempt to keep students' visits to a minimum.

3. MATERNITY AND CHILD WELFARE SERVICES

(a) Antenatal Clinic

	1953	1954	1955	1956	1957/58
1st Attendances	2,526	2,641	2,600	2,981	3,113
Repeat Attendances	8,647	9,194	9,890	11,133	12,395
Total	11,173	11,835	12,490	14,114	15,508

(b) Deliveries

	1953	1954	1955	1956	1957/58
Confined by Sisters and Midwives	1,960	2,130	2,268	2,217	2,354
Students assisted by Midwives	341	77	114	406	412
Transferred During Labour	145	177	209	187	206
Total	2,446	2,384	2,591	2,801	2,972

(c) Antenatal Visits

	1953	1954	1955	1956	1957/58
Sisters	247	386	402	476	465
Nurses	—	2,358	1,943	1,249	1,347

(d) Postnatal District Nursing

	1953	1954	1955	1956	1957/58
Sisters	840	646	541	2,045	1,136
Nurses	23,920	25,550	31,092	29,203	29,034
Health Visits	—	2,116	1,985	2,186	1,670

(e) Postnatal Clinic Attendances

	1953	1954	1955	1956	1957/58
	1,051	1,974	1,158	1,702	1,642

The number of confinements is slightly higher.

(f) Infant Welfare Service

	1953	1954	1955	1956	1957/58
No. of Babies Delivered	2,446	2,384	2,591	2,810	2,972
1st Attendances	1,429	1,838	1,557	2,073	2,185
Repeat Attendances ...	6,471	9,046	10,935	21,653	25,115
Babies seen by Doctor	4,470	4,846	4,103	7,294	8,586

The numbers in this section are increasing.

(g) Immunisation of Baby Clinic Babies

	1953	1954	1955	1956	1957/58
Diphtheria and Whoop- ing Cough	1,641	2,656	1,904	2,408	2,505
Vaccinations	448	841	614	395	499
Mantoux	—	—	—	155	314

4. TUBERCULOSIS SERVICE

From the figures tabulated below it is observed that there has been some increase in the number of new notifications and first attendances

of contacts. The Baby Clinic continues to grow, and has proved popular with the mothers and of great preventive value to the Babies. Owing to the large number of new notifications and the small number of patients discharged each month, it has proved impossible for the TB Medical Officer to continue seeing contacts for their non-tuberculosis ailments. These patients are now referred to the general clinic.

(a) Tuberculosis Case Clinic

	1953	1954	1955	1956	1957/58
1st Attendances	248	239	384	431	520
Repeat Attendances ...	2,048	2,507	4,782	10,332	8,138
Notifications	522	575	458	515	581

(b) Contact Clinic

	1953	1954	1955	1956	1957/58
1st Attendances	873	1,093	1,049	1,127	1,159
Repeat Attendances ...	157	428	690	2,743	1,629
	1,030	1,521	1,739	3,870	2,788

(c) District Visits

	1953	1954	1955	1956	1957/58
Health Inspector	920	808	1,194	934	1,338
T.B. District Nurses					
General Visits	3,792	2,806	5,008	4,156	5,729
Streptomycin Visits ...	—	8,107	15,785	26,929	26,053
Clinic Streptomycin					
Injections	—	—	—	16,060	18,844
T.B. Sisters' General					
Visits	—	—	—	392	1,032
Postnatal Visits	—	—	—	102	149
Number of X-Ray					
Plates	—	—	—	—	3,766

This annual increase in notifications and first attendances is largely due to more efficient and more vigorous attempts on the part of those responsible for the control of tuberculosis throughout the country, in tracing known cases, investigating contacts and notifying them to us. With the introduction early in 1958 of routine X-rays for every person attending the Pass Office, this Clinic must expect an appreciable increase in the number of new notifications.

Each new notification sets in motion a train of events involving first the Clerk, then the Health Inspector, the Sister, the Nurse and the Social Worker. A request has already been made for an additional clerk, in order that this Clinic may cope more adequately and efficiently with each patient. It is our endeavour to deal immediately with each patient, thus gaining his confidence and co-operation. Now

that a waiting list for admission to hospitals no longer exists there is seldom a delay of more than two days before a patient requiring hospitalisation is admitted unless he himself is unwilling.

This increased availability of hospital beds is largely due to the part played by the SANTA Settlements. Patients found to have a minimal lesion are admitted direct to the settlements, leaving the hospital beds for those more seriously ill. Also the patients in hospital are transferred to the settlements as soon as their progress warrants, again leading to a greater turnover in hospital beds. It is particularly fortunate that this Clinic has such a settlement right in the Township, enabling patients to be admitted near their homes. The social services and occupational therapy are provided by the Alexandra Anti-Tuberculosis Association, but the medical supervision is the responsibility of the Clinic's Tuberculosis Medical Officer.

The social services provided by this same Association are of great assistance to us. Without the invaluable advice and aid which their social workers give it would be impossible for the patient to enter hospital with any peace of mind regarding his home and family. This aspect of the patient's treatment is of great importance. It is long accepted that a worried and anxious tuberculous patient will not submit willingly to hospitalisation and that anxiety may well retard his recovery.

With this increased attack on the control of tuberculosis the present X-Ray facilities are proving more and more inadequate. The Non-European Hospital is finding it impossible to X-Ray the numbers of patients sent in each week. The mobile van sent out weekly from Rietfontein Hospital deals fairly satisfactorily with a large proportion of the cases, but these films are only second best and totally unsuitable for children. The time must come in the near future when this Clinic will operate its own X-Ray plant on the premises. If this development materialises, then, together with the Peri-Urban control in the Township, the expected reduction in the Township population and the regular X-Rays of persons at the Pass Office, it is a possibility that instead of scratching at the surface of the problem, pulmonary tuberculosis may be brought under an effective degree of control in the next few years.

The responsibility for this essential development and expansion of the tuberculosis service rests now with the Peri-Urban Areas Health Board. In the very short period of their office they have given us every assistance and have indicated their great interest and co-operation. I hope the Tuberculosis Clinic will expand still further under these new conditions.

Increases in staff had given rise to an urgent need for additional office space. The donation of £2,000 by the Bantu Welfare Trust has made it possible to provide some extra accommodation and in January, 1958, the T.B. Social Workers and the Clerks were able to move into the new premises.

I should like to make special mention of the Nursing Staff and the Health Inspector, Mr. Jafta, whose never-ending work on the district is so essential in our efforts to combat this disease. Their continued efforts in the field of health education, and the persuasion of patients to con-

tinue treatment for a sufficient period of time are often unrewarding. Without these members of the staff the Clinic could not function.

Dr. L. Braudo, Dr. M. Zion and Mr. I. Lichter have again given us invaluable assistance in their capacity as honorary consultants. I should also like to thank Dr. Strasberg of the Non-European Hospital for making X-Ray facilities available to the Clinic.

5. VENEREAL DISEASES SERVICES

	1953	1954	1955	1956	1957/58
1st Attendances	1,754	1,689	1,276	1,594	1,841
Repeat Attendances ...	6,061	4,267	3,566	4,565	6,062
Total	7,816	5,956	4,842	6,159	7,903

Again these numbers have increased substantially. In spite of a determined attack over many years there is still no sign of any decrease in the incidence of these diseases.

In conclusion I wish to thank the members of the Board of Management for their co-operation and support.

Sister Mary Stephen returned to Ireland in July, 1957. Sister Mary Canisius replaced her in October, 1957. We are indeed grateful to these Sisters and to Sisters Mary Mathew, Mary Celestine and Mary Joan for their untiring efforts in the interests of the Clinic.

I wish to take this opportunity of thanking the Nursing, Administrative, Clerical and Driving Staff and everyone else connected with the Clinic for the work which they have done.

Drs. Granat, Schneier, Salmond, Irwin, together with occasional staff Drs. Lunz, Bernstein, Jordon, Wagstaff, Wyndham and Greenstein deserve gratitude for good work done. My special thanks go to Drs. Mpambo, Mokgobo, Ngekane, Nxumalo and Rathebe, who were of wonderful help to the Clinic during our peak period, November, December, 1957, and January, 1958.

In addition to the Consultants in the Tuberculosis Clinic already mentioned, Drs. S. Shippel and C. Michelow in Obstetrics and Gynaecology, Dr. L. Meyersohn in Ophthalmology, Dr. J. Griffiths in Paediatrics and Dr. B. de Saxe in Surgery, have all given us honorary assistance, and we heartily thank them.

I wish, as before, to thank Miss E. Ponsonby and Miss C. Scott-Smith of the African Children's Feeding Scheme for the valuable work done through their showing of Educational Health Films.

In view of my pending resignation as from 31st March, 1958, I wish the new Medical Superintendent, and the Clinic, success in the future.

S. P. JACOBSON, M.R.C.S., L.R.C.P.,
Medical Superintendent.

S. MACHANICK, M.B., Ch.B.,
T.B. Medical Officer.

JOHANNESBURG CORONATION DENTAL INFIRMARY

DENTAL SERVICES—ALEXANDRA HEALTH CENTRE AND
UNIVERSITY CLINIC.

Preamble:

Dr. R. M. Tren, a Senior Dental Officer of the Johannesburg Coronation Dental Infirmary, is still in charge of this Clinic, which is the only Non-European service rendered by the Johannesburg Coronation Dental Infirmary and financed from its grant-in-aid.

The population of Alexandra Township has been officially stated as approximating 80,000 adults, plus a child population of 16 to 18 thousand.

Very little educational propaganda is attempted due to restriction of staff. We did, however, as an experiment, extend our Oral Hygiene Campaign to one large school, with rather surprising results. Tooth-brushes were supplied at the reduced cost similar to that supplied to European Schools. It is the opinion of Dr. Tren that it would be worth while to extend this type of propaganda to all schools.

It is noticeable from the records that patients attend from as far away as Halfway House, Kempton Park, Edenvale, Germiston Area, Moroka and Orlando Townships.

Introduction:

Referring to my report of last year—period July 1956 to June 1957—which stated that the Union Native Affairs Department had taken over the responsibility for the education of the Non-European schoolchildren in the Township — and that it was hoped that this Department would assist financially to allow increased expansion of dental services, not only for the adult population, but also to provide a much needed systematic Dental Health Service to the thousands of schoolchildren.

The following is an extract from a letter received from the Chief Native Commissioner, Witwatersrand, in reply to our application for financial assistance. I quote, "The Secretary for Native Affairs explains that available funds must be stretched to meet the educational needs of the thousands of children roaming the streets rather than to add to the privileges of those already at school. It is regretted, therefore, that your requests cannot be granted."

The Commissioner was sympathetic, but lack of funds to his Department made it impossible for his Department to assist.

However, during the year it was announced that the Union Government had established the Alexandra Peri-Urban Health Board under the Chairmanship of Mr. Le Roux, and had made a substantial grant towards Health Services.

I immediately reported the facts to the Board of the Johannesburg Coronation Dental Infirmary and asked for permission to approach the said Peri-Urban Board. The result was a request by it for us to address not only the Alexandra Health Board but the full Peri-Urban Board under the Chairmanship of Mr. Le Roux. Thus on Wednesday, 19th March, 1958, I addressed the Board of some 18 members and the following are the salient points of my address, which was delivered in Afrikaans and supplemented by all necessary documentation.

- (1) The Johannesburg Coronation Dental Infirmary, as seen from the annual report attached, is subsidised by the three Governments, viz. Provincial Administration, Union Government and Local Government for the treatment of various groups of the European population, within the Magisterial Area of Johannesburg and such areas as the Authorities may determine from time to time.
- (2) In 1950 when the Union Government discontinued its Health Services at the Alexandra Health Centre and University Clinic it requested the Johannesburg Coronation Dental Infirmary, through its Health Department, to establish a dental health service at the Alexandra Health Centre.
- (3) The Board of the Johannesburg Coronation Dental Infirmary was assured that although at that particular time no subsidy was made available for the treatment of Non-Europeans at Alexandra Township, it would not be long before Alexandra Township, together with all Peri-Urban Areas, would be placed under the control of some Governmental Department which would then provide the necessary funds for adequate services for the Non-Europeans of that area.
- (4) The Johannesburg Coronation Dental Infirmary Board established a most up-to-date clinic at the Health Centre at its own expense and entered into an agreement with the Committee of the Alexandra and University Health Centre, whereby the Johannesburg Coronation Dental Infirmary would render Free Dental Services to the inhabitants of the Township and its surroundings, and the Centre provide the necessary accommodation, cleaning services and a Non-European nurse.
- (5) The Johannesburg Coronation Dental Infirmary seconded one of its Permanent Dental Officers to the Alexandra Health Centre and all costs of running the Dental Clinic are paid by the Board of the Johannesburg Coronation Dental Infirmary out of its limit subsidy of £6,500 per annum, which it receives from the Union Health for rendition of dental services to its European Expectant and Feeding Mothers, its share for pre-school children, apprentices, indigent youths and such adults as are referred to the Infirmary.
- (6) It is therefore evident that for seven odd years the Johannesburg Coronation Dental Infirmary has been carrying the burden with

hopes that some time the question of Peri-Urban responsibility would be settled.

- (7) That day of allocation of responsibility has now arrived and in its wisdom the Government has created machinery to provide amongst its many functions Health Services, and, it is hoped, Dental Services.
- (8) Thus it is now our Board's great pleasure and privilege to apply formally to the Peri-Urban Health Board, under which Alexandra Township falls, for an annual subsidy of £5,000.
- (9) In addressing your full Board I made it clear that under the circumstances from 1950 to date we would only allocate one full-time dental surgeon to the Alexandra Clinic, due to lack of funds.

We now feel justified in respectfully applying for an annual subsidy of £5,000—which will give us another full-time dental officer and some 4 to 6 part-time paid dental officers (see section of report on this category at Johannesburg Coronation Dental Infirmary).
- (10) We do not require any capital expenditure—merely an annual subsidy for maintenance. The accommodation at present is adequate for expansion as suggested above. If, however, the Peri-Urban Health Board proposes to build its own Health Centre my Board would appreciate it if our full requirements for accommodation could be considered.
- (11) I would like to draw attention to the fact that less than two years ago all the schoolchildren, excepting the coloured school, suddenly became our dental responsibility. Prior to that the responsibility was shared by the various religious organisations.

Finally, I would like to reiterate that we ask for maintenance only—any capital expenditure necessary will be undertaken by my Board.

I also reported the above facts to the Deputy Chairman of the Board of the Alexandra Health Centre and University Clinic, Mr. Justice Ramsbottom, who stated that his Board would shortly interview the Peri-Urban Health Board and most likely this subject would also come under discussion.

During the year Dr. Tren took charge of ten sessions per week (eleven being the maximum) and during his absence on leave the services of a part-time paid Dental Officer, as well as those of a permanent staff member, were brought into operation.

The following statistical table reveals the work accomplished during the year under review:

Group	Period	Attend- ances	Examin- ations	Extrac- tions	Fillings	Other Treat- ment	Total Opera- tions
Pre-School	1956/57	3,325	2,067	1,039	1,329	243	4,678
	1957/58	2,415	1,330	639	1,177	129	3,275
Scholars	1956/57	1,568	1,568	2,210	—	—	3,778
	1957/58	1,766	1,637	2,648	—	13	4,298
Adults	1956/57	3,102	3,102	4,615	—	—	7,717
	1957/58	2,864	2,459	4,197	—	10	6,666
Ante & Post- Natal	1956/57	377	377	730	—	—	1,107
	1957/58	182	166	342	—	—	508
Totals	1956/57	8,372	7,114	8,594	1,329	243	17,280
	1957/58	7,227	5,592	7,826	1,177	152	14,747

Due to the co-operation of the Medical and Nursing Staff of the Clinic, patients from the Ante and Post Natal Department, as well as from the T.B. Section, are attending the Dental Department in increasing numbers. The factor is most gratifying, especially in respect of the Ante-Natal patients, because of the superstition that ill-effects result from extractions.

I would like to mention that we inaugurated a supply of "a cup of milk and a slice of bread" with peanut butter for the age grades during the morning sessions. It is supplied at 1d. per child. This service is greatly appreciated by the little ones. The cost is borne by the Johannesburg Coronation Dental Infirmary.

The following is an official list of schools and numbers on the roll as supplied by the Alexandra School Board:

Name of School	No. of Children.
Alexandra Secondary School	238
Bovet Community School	683
Carter Community School	624
Dr. Knack Community School	465
Emfundisweni Community School	932
Ithute Community School	700
Pholoshu Community School	1,033
Skeen Community School	737
Gordon Community School	619
Ekuhsnyisweni Community School	551
Ikage Community School	1,282
Iphutheng Community School	555
M. C. Weiler Community School	775
Service Community School	217
Zenzeleni Community School	298

I would like to record our appreciation to the Medical Superintendent, his Colleagues, Nursing and Administrative Staffs for their co-operation and assistance during the year—our own staff is thanked in my annual report.

MAURICE MONKS,
Deputy Director.
p.p. G. A. FRASER,
Director.

SUNDRY DONATIONS

(1-4-57—31-5-58)

(See Revenue and Expenditure Account.)

	£	s.	d.		£	s.	d.
Dr. J. B. Abelson	1	0	0	Bristolabs (Pty.) Ltd.	2	2	0
Dr. E. C. Adam	2	2	0	J. Brockhouse (S.A.) Ltd. ...	3	3	0
Dr. J. Adno	1	0	0	Dr. R. Buchan	1	0	0
Dr. M. G. Abramsohn	1	1	0	Caltex (Africa) Ltd.	5	5	0
Advance Laundries Ltd. ...	2	2	0	B. Cameron	5	0	0
African Body & Coach Services (Pty.) Ltd.	4	4	0	Capt. and Mrs. W. R. Cameron	5	5	0
African Explosives & Chemical Industries Ltd. ...	50	0	0	Canadian Club of Jhb (expression of sympathy to widow of late Dr. J. A. Bancroft)	5	5	0
African Sales Co. (Pty.) Ltd.	2	2	0	Dr. M. I. Cassinjee	1	0	0
Dr. J. C. Allan	1	0	0	Mrs. M. Cassirer	1	10	0
Allied Building Society ...	5	5	0	Central Engineering Works (Pty.) Ltd.	5	0	0
Amalgamated Packaging Industries Ltd.	2	2	0	Dr. A. F. Chemaly	1	0	0
Mrs. Colin Anderson and her Committee	11	13	0	Dr. M. Chitters	1	0	0
Dr. D. D. F. Anderson	1	0	6	Choats Pharmaceuticals (Pty.) Ltd.	5	5	0
Anglo-Tvl. Investment Co. Ltd.	25	0	0	N. M. Clothier	5	5	0
Anonymous	18	2	6	Coal Cartage (Pty.) Ltd ...	2	2	0
Arc Engineering Supply Co. (Pty.) Ltd.	1	1	0	Dr. M. Cohen	1	0	0
Dr. C. Aronsohn	1	0	0	Mr. and Mrs. S. Cohen ...	10	10	0
Mrs. W. Aronsohn	30	0	0	Collins Motor Supplies ...	2	2	0
W. Aronsohn	100	0	0	Colonial Banking & Trust Co. Ltd.	2	2	0
Bakers Ltd.	1	1	0	Connell Instrument Co. (Pty.) Ltd.	1	1	0
Dr. J. St. Clair Ballenden ...	1	0	0	D. F. Corlett (Pty.) Ltd. ...	3	3	0
Thos. Barlow & Sons (S.A.) Ltd.	10	10	0	Country Club, Jhb.	5	0	0
H. D. Barnes	5	5	0	R. V. Crake	1	1	0
Barnetts (Pty.) Ltd.	1	1	0	Mrs. J. Cranko	1	1	0
Ed. L. Bateman (Pty.) Ltd. ...	5	0	0	W. M. Cuthbert & Co. Ltd.	2	2	0
Mrs. M. Beard	5	5	0	A. J. Cutten	1	1	0
Benoni, Brakpan & Springs Board of Executors & Trust Co. Ltd.	5	5	0	Mrs. D. M. Dale	5	0	0
Dr. H. Bentel	3	3	0	W. & G. Dalgleish	5	5	0
Dr. F. Berkowitz	1	1	0	Dandy Polish Co.	2	2	0
Dr. M. I. Berman	1	0	0	Dr. L. Denis-Lester	1	1	0
Dr. A. H. Berman	1	0	0	Development & Invest- ment Co. of S.A. Ltd. ...	25	0	0
B. L. Bernstein	10	10	0	Dr. D. I. L. de Villiers ...	1	0	0
Dr. A. H. Bismullah	1	0	0	Dr. B. de Villiers	1	0	6
Dr. J. Black	5	5	0	Dominec (Pty.) Ltd.	1	1	0
Blane & Co. Ltd.	2	2	0	Dorman, Long (Africa) Ltd.	10	10	0
Dr. A. B. Bloom	1	0	0	Drive-in Theatres (Pty.) Ltd.	1	1	0
Dr. B. M. Bloomberg	3	3	0	East Geduld Women's Charity Fund	15	0	0
Dr. J. B. Borman	1	0	0	Mr. J. M. Edelstein	5	5	0
Dr. and Mrs. J. H. Both- well	2	2	0	Edgars Stores Ltd.	5	5	0
Bowater Paper Co. (Pty.) Ltd.	3	3	0	"Eva" Dress Manufac- turers (Pty.) Ltd.	1	1	0
Miss K. Brabazon	1	0	0	Dr. M. H. Fainsinger	3	3	0
Dr. B. A. Bradlow	1	1	0	Dr. L. Fatti	2	2	0
Bramley Bazaar	1	1	0	Federated Employers' Mutual Ass. Co.	5	5	0
Dr. Z. M. Bredenkamp	1	1	0				
Brewer's Inst. of S.A. ...	10	10	0				

	£	s.	d.		£	s.	d.
L. Feldman (Pty.) Ltd. ...	10	10	0	Killarney Golf Club			
Mrs. S. Feinstein ...		10	0	(Ladies' Sect.) ...	5	0	0
Dr. S. J. Fleishman ...	5	5	0	J. A. C. Kinnish ...	2	2	0
Kenneth B. Foy ...	5	5	0	G. Kisner ...	1	1	0
Franco Signs (Africa)				Dr. R. B. Lauer ...	3	3	0
(Pty.) Ltd. ...	1	1	0	Legal & Gen. Assurance			
Frank & Hirsch (Pty.)				Soc. Ltd. ...	45	8	5
Ltd. ...	2	2	0	Prof. H. Le May ...	3	0	0
Jacob Frankel Ltd. ...	5	5	0	A. Clark Lennox ...	5	5	0
Fraser & Chalmers ...	10	10	0	A. H. Leon ...	10	10	0
R. J. Friel ...	5	0	0	C. H. Leon ...	25	0	0
Mr. and Mrs. B. H. Friel	10	10	0	Leon's Mineral Water			
Gallo (Africa) Ltd. ...	2	2	0	Works ...	1	1	0
Dr. S. E. L. Gauntlett ...	2	2	0	Lever Bros. (S.A.) (Pty.)			
Geen & Richards Ltd. ...	3	3	0	Ltd. ...	3	3	0
Glanville, Enthoven				Henri Lidchi & Co.			
(S.A.) (Pty.) Ltd. ...	3	3	0	(Pty.) Ltd. ...	2	12	6
Hon. Dr. H. Gluckman ...	1	1	0	Lindsay Saker Motors			
I. Golding ...		10	6	(Pty.) Ltd. ...	3	3	0
Greaterman's Stores ...	25	0	0	J. Lipschitz & Sons ...	1	1	0
Hon. Mr. Justice L.				Alex Lipworth Ltd. ...	5	5	0
Greenberg ...	10	10	0	Egbert L. Loopstra &			
W. H. Gresty ...	2	2	0	Sons Ltd. ...	1	1	0
Grootvlei Women's				H. Losky ...	2	2	0
Charity Fund ...	10	0	0	J. MacGill Love ...	5	0	0
Gypsum Industries Ltd. ...	5	5	0	Ted McKune's Vene-			
Haggie, Son & Love				tian Blind Specialists			
(1936) Ltd. ...	2	2	0	(Pty.) Ltd. ...	50	0	0
Mr. and Mrs. A. Harris ...	60	10	0	McKinnon Chain (S.A.)			
Mr. and Mrs. H. D. T.				Ltd. ...	5	5	0
Harris ...	3	3	0	Mr. and Mrs. I. A.			
Ahmet Hassen ...	5	5	0	Maisels ...	21	0	0
P. Hesselson ...	3	3	0	William Makola ...		5	0
Drs. Heymann, Javitt				Mrs. E. Mark ...	5	5	0
Braudo & Senior ...	4	0	0	Alec Marcus & Co. ...	1	1	0
Mr. and Mrs. A. Heyman	5	0	0	S. G. Mennell ...	10	10	0
Hind Bros. & Co. Ltd.				C. S. Mennell ...	20	0	0
(for scale) ...	7	0	0	Metal Rolling & Tube			
Hollerith Christmas Tree				Co. (Pty.) Ltd. ...	10	10	0
Club ...	3	3	0	Modderfontein Dyna-			
Holman Bros (Pty.) Ltd.	2	2	0	mite Factory (Golf			
Mr. and Mrs. J. B.				Club Ladies' Section) ...	3	3	0
Home-Rigg ...	5	5	0	Modderfontein Dyna-			
Houghton Golf and				mite Factory			
Bowling Club				Women's Welfare Sect.)	20	0	0
(Ladies' Sect.) ...	13	13	0	Miss E. Moodie ...	4	4	0
Mrs. E. Hunt ...	5	0	0	In Memory of the Late			
Mrs. G. Hunt ...	3	3	0	Mrs. J. A. Moodie:			
Mrs. M. Hurry ...		10	0	Mr. and Mrs. G. D.			
L. K. Hurwitz & Son ...	3	3	0	Ballance ...	1	1	0
S. Isaacs ...	3	3	0	Mrs. F. M. Chauler ...	1	1	0
Dr. Monte Jackson ...	1	1	0	Dr. B. M. Clark ...	1	1	0
L. K. Jacobs & Co. Ltd.	5	5	0	Mesdames K. & M.			
J. W. Jagger & Co. Ltd.	1	1	0	Brabazon ...	1	1	0
Dr. M. D. W. Jeffreys ...	1	1	0	Mrs. E. C. Dyke ...	2	2	6
Jhb. Offal Traders ...	3	3	0	Mr. and Mrs. H.			
Jhb. Stock Exchange ...	25	0	0	Goodwin ...	1	1	0
Mrs. G. Jokl ...	3	3	0	Mr. & Mrs. A. W. P.			
F. E. Kanthack ...	10	0	0	Hallett ...	3	3	0
Keatings Pharmaceuti-				Prof. & Mrs. Hyslop ...	1	1	0
cals Ltd. ...	2	2	0	Mrs. M. Hurry ...	1	0	0
				Mrs. Immelman ...	2	2	0

	£	s.	d.		£	s.	d.
Ingrams Pharmacy,				Redhill School (Pupils) ...	10	0	0
Rosebank	1	1	0	Religious Society of			
Miss N. Kinkead	2	2	0	Friends	6	6	0
Miss N. F. Neave	1	1	0	O. Richter	80	0	0
Mr. & Mrs. P. N. Nel-				Mrs. A. J. Roberts	5	0	0
son	1	1	0	Robins Conveyors (S.A.)			
Mr. & Mrs. D. Robert-				Ltd.	2	2	0
son	2	2	0	Robor Ltd.	25	0	0
Mr. & Mrs. C. Robin-				Roedean School	12	0	0
son	2	2	0	Mrs. N. E. Rosenberg	3	0	0
Women's Assoc. of St.				Royal Johannesburg Golf			
Mark	1	1	0	Club (Ladies' Sect.)	10	0	0
Hon. Mr. Justice and				Dr. A. J. Rudolph	2	2	0
Mrs. O. D.				Sachs & Berman	2	2	0
Schreiner	5	5	0	Frederick Sage & Co.			
				(S.A.) Ltd.	3	3	0
	30	8	6	Save the Children Fund ...	25	0	0
				The Hon. Mr. Justice and			
Morris & MacDonald (Pty.)				Mrs. O. D. Schreiner ...	26	5	0
Ltd.	1	1	0	S.C.S. Pharmaceutical			
Mosenthals Ltd.	2	2	0	Laboratories (Pty.) Ltd.	1	1	0
National Motor Assem-				M. A. Seedat	1	0	0
blies (Pty.) Ltd.	2	2	0	Seligson & Clare Ltd. ...	5	5	0
National Trading Co. Ltd.				Shell Co. of Southern			
Newtown Plumbing Works	10	6		Africa Ltd.	5	5	0
New Union Goldfields Ltd.	21	0	0	Mrs. B. Silcock	2	0	0
The Robert Niven Trust	1,000	0	0	Miss Elsie H. Simonds ...	1	15	10
North Hygienic Butchery ...	10	6		The James Smith Trust ...	35	0	0
Northern Metal Mart	3	3	0	S.A. Druggists Ltd.	3	3	0
Nugget Polish Co.	5	5	0	S.A.P.M. Building Soc. ...	5	5	0
Nu-World Industries	2	2	0	Southern Building Soc. ...	10	0	0
Ocean Accident & Guarante-				Stanley Motors Ltd.	15	0	0
tee Corp. Ltd.	2	2	0	The "Star"	3	3	0
O.K. Bazaars (1929) Ltd. ...	26	5	0	Sterling Metal Co.	25	0	0
In Memory of the Late Sir				Stewarts & Lloyds of S.A.			
Ernest Oppenheimer:				Ltd.	2	2	0
Mr. & Mrs. M. Borkum	2	2	0	St. Mark's Presbyterian			
Mr. & Mrs. P. Davis	2	2	0	Church, Women's Assoc.	2	2	0
Mr. & Mrs. I. G. Mac-				Stork Napkin Service			
Pherson	2	2	0	(Pty.) Ltd.	1	1	0
Mr. & Mrs. C. Wiley	2	2	0	Geo. Stott & Co. Ltd. ...	5	5	0
				Mrs. B. Stratford	7	6	
	8	8	0	Stuttaford & Co. Ltd. ...	1	1	0
				K. Suransky (Pty.) Ltd. ...	1	1	0
				Surat Trading Co.	25	0	0
Parktown High School for				Dr. and Mrs. M. M. Suz-			
Girls	5	5	0	man	10	10	0
Dr. J. Penn	5	5	0	L. Suzman Ltd.	5	5	0
Pearse, Aneck Hahn &				James Thompson Ltd.			
Bristol	30	0	0	(staff)	1	5	0
Premier Biscuit Co. Ltd. ...	2	2	0	Jas. M. Thompson	2	2	0
Mrs. B. Price	5	0	0	Mrs. M. D. Thompson ...	2	2	0
Price's (S.A.) Ltd.	3	3	0	Truworths Ltd.	21	0	0
Progress Electric Fitting				Miss D. M. Turner	1	1	0
Co.	3	3	0	Union Gasogenes (Pty.)			
Props Concrete Works				Ltd.	2	2	0
(Pty.) Ltd.	1	1	0	United Building Society ...	25	0	0
Dr. A. Rabinowitz	3	3	0	Estate late F. A. Unger ...	10	0	0
Hon. Mr. Justice and Mrs.				J. H. Vivian & Co.	3	3	0
W. H. Ramsbottom	10	0	0	Vacuum Oil Co. of S.A.			
Reckitt & Colman				Ltd.	5	5	0
(Africa) Ltd.	5	0	0	C. C. Wakefield & Co. Ltd.	25	0	0

	£	s.	d.
Wanderers Golf Club (Women's Sect.)	5	0	0
Martha Washington Club	52	10	0
Mr. and Mrs. G. A. Water- meyer	5	0	0
Dr. M. Weinbrenn	2	2	0
Westdene Products (Pty.) Ltd.	1	1	0
Mrs. M. L. Weston	10	10	0
A. Wilson	10	10	0
Williams, Hunt & Co. (Tvl.) Ltd.	2	2	0
Mrs. N. M. Wilson	1	1	0
Windsor Park Club (Ladies' Sect.)	5	0	0
Woolworths (Pty.) Ltd. ...	2	2	0
Willie Wong	5	5	0
Wyeth Laboratories (Pty.) Ltd.	2	2	0
	<u>£2,852</u>	<u>9</u>	<u>9</u>

HALL BUILDING FUND

W. Aronsohn	100	0	0
Anonymous	25	0	0
Mrs. O. I. Frankel	12	12	0
Rotary Club of Rose- bank	942	5	0
Estate Late Mrs. Ann Prenter	1,000	0	0
	<u>£2,079</u>	<u>17</u>	<u>0</u>

BEQUESTS

	£	s.	d.
Estate Late Daniel Kaplan	250	0	0
Estate Late A. J. Levy	100	0	0
Estate Late Solomon Sive	50	0	0
	<u>£400</u>	<u>0</u>	<u>0</u>

BEQUEST

Late Lt.-Col. Dobbs...			
Motor Car	£141	1	1

BUILDING FUND EXTENSIONS TO CLINIC

Anglo-Amer. Corp. of S.A. Ltd.	250	0	0
Anglo-Tvl. Cons. Invest Co. Ltd.	100	0	0
Bantu Welfare Trust ...	2,000	0	0
Central Mining & Inv. Corp. Ltd.	100	0	0
General Mining & Finance Corp.	100	0	0
Jhb. Consol. Inv. Co. Ltd.	150	0	0
New Cons. Goldfields Ltd.	100	0	0
Union Corporation Ltd.	25	0	0
	<u>£2,825</u>	<u>0</u>	<u>0</u>

ACKNOWLEDGEMENTS

We wish to thank our many friends for their support and service during the past year:

Gifts:

Medical Supplies: Allen & Hanburys Ltd.; B.P.D., (S.A.) (Pty.) Ltd., Bristolabs (Pty.) Ltd.; Prof. R. A. Dart; Dominion Drug Co.; Fever Hospital; Fison's Chemicals (S.A.) (Pty.) Ltd.; Dr. I. Freed; Glaxo Laboratories (S.A.) (Pty.) Ltd.; Harriet Nursing Home, Germiston; Johnson & Johnson (Pty.) Ltd.; Keatings Pharmaceuticals Ltd.; Alex Lipworth Ltd.; M. & J. Pharmaceuticals (Pty.) Ltd.; March, Sharpe & Dolme; Maybaker (S.A.) (Pty.) Ltd.; Mrs. Meyer; Modderfontein Hospital; Parke Davis & Co.; Reckitt & Colman (Africa) Ltd.; Dr. Reiniets; Mrs. M. T. J. Rich; Roche Products; Saxonwold Pharmacy; Scherag (Pty.) Ltd.; Dr. J. Schwartz; Sive Bros. & Karnovsky Ltd.; S.A. Druggists Ltd.; S.A.I.M.R. (through Dr. R. Sichel), Westdene Products (Pty.) Ltd.

Baby Foods: Nestlé (S.A.) Ltd.; Large Weekly Donation, Allen & Hanbury (Africa) Ltd.; Regular Donation, Hind Bros & Co. Ltd.; Monthly Donation of Incumbe.

Furniture and Equipment: Dr. Gold; S. Goldreich; Mrs. G. A. Green; Mrs. G. Hunt; Ke'ly & Heimann; King David School; Mrs. I. A. Maisels; Mrs. C. McDonald; McLaren & Campbell & Co.; Mrs. Simpson; S.A. Wrought Iron Products (Pty.) Ltd.; Mrs. Weinbren; Mrs. Williams; Mrs. Whyte; Mrs. V. Berrange; Mrs. M. Frankel; Madame M. W. Werdmuller; Springfield Tyre Co.; Carlton Hotel.

Clothing and Toys: Mrs. Birnash; Mrs. Clayton; Mrs. Cohen; Mrs. J. Cranko; Mrs. Egnos; Mrs. R. Godet; Mrs. Goodgoel; Mrs. A. Harris; Dr. Hart; Mrs. R. Hoffman; Mrs. G. Hunt; Mrs. Jones; Mrs. Kahn; Mrs. H. Koppel; Mrs. Kruger; Mrs. Marks; Mrs. A. M. Mateland; Mrs. Meyer; Mrs. J. H. Pirie; Mrs. D. G. Pirie; Mrs. Rabinowitz; Dr. Reiniets; Mrs. Roberts; Mrs. Rose; Mrs. Rosenthal; Mrs. Segal; Mrs. S. Smollan; Mrs. P. Steele; Tasty's Caterers; Mrs. R. A. Todd; Mrs. J. Turner; Mrs. Watermeyer; Mrs. White-son.

Sweets and Cakes: Chapelat Industries Ltd.; Crystal Confectionery; Fairmount School; Mrs. H. Koppel; Miss E. Moodie.

Cots, Prams and Blankets: Mrs. Bell; Mrs. Clayton; Design Manufacturing Co.; Mrs. Egnos; Mrs. Jenkins; Mrs. Kenter; Mrs. I. A. Maisels; Mrs. Malkin; Mrs. P. M. Martin; Mrs. N. Phillip.

Materials: Chenille Industries; Mrs. S. A. J. Munn.

Bottles and Newspapers: Mrs. Barford; Mrs. Corder; Mr. J. Cranko; Mrs. Ferrey; Mrs. B. Friedman; Mrs. Goldsmith; Mrs. Hastie; Mrs. G. Hunt; Miss A. Lacey; Miss J. Little; Mrs. Meyer; Mrs. J. McBride; Mrs. J. Mackenzie; Mrs. Scott; Mrs. J. Shannon;

Miss N. Smith; Mrs. Smythe; Mrs. Thomson; Mrs. Sargeant; Mrs. Green; Mrs. C. Webster.

Envelopes and Stationery: Mrs. G. McKenzie; Union Corporation Ltd.; P. C. Westwood; Mrs. Green; Miss McKay; Mr. F. Gyax.

Fruit and Vegetables: Oxford Nursery School; Mr. Schwarz; Sunripe Fruit Co., regular gift of crates of bananas.

Jumble for Sale: Proceeds £27, Mrs. B. Koch.

We wish to make a special acknowledgement to Nestlé (S.A.) Ltd. for their very generous weekly gift of their baby foods and products, without which we would be unable to carry on the Baby Clinic.

The Public Utility Transport Corporation have again assisted by giving us free tickets which has enabled us to send needy patients to hospital.

Mr. Brittany of S.A. Wrought Iron Products has also been generous in giving us articles of furniture and various fittings.

Gifts of warm clothing were received from "The Good Companions" Work Party, and we deeply appreciate the good offices of their Convener, Mrs. M. Robinson, in this respect.

Mrs. Watermeyer has given advice when needed and has kindly assisted in giving plants for the garden.

Mrs. Lydia Taylor was once again able to give some of her time to help in the Secretary's office.

Mrs. F. Josephson and Mrs. O. Magua very kindly assisted in the Baby Clinic.

In the Ante-Natal Clinic Mrs. M. Findlay is a welcome and hard-working visitor.

During the last few months, Mrs. L. Munro has given invaluable assistance in the Secretary's Office, and we most sincerely hope that we shall long enjoy her regular visits.

An appeal for donations which appeared in "Stoep Talk" in the "Star" for Lillian Gumede's triplets brought an overwhelming response in both cash and kind from the following: "The Star," "Golden City Post," Matron of the Bridgman Hospital, Mrs. Malkin, Mrs. Phillips, Mrs. C. H. Askelso, Mrs. Brodie, Mrs. G. Carr, Mrs. Christy, Mrs. P. De Villiers, Dr. N. Garber, Mrs. Gordon, Miss M. Gulliver, Mrs. Heilbron, Mrs. Hoogwerd, Mrs. Jacobson, Mrs. Kartoun, Mrs. Levy, Mrs. S. M. Lloyd, Mrs. V. C. Lazarus, Marlborough Garage, Mrs. Marshall, Mrs. Meisel, Mrs. Muller, Mrs. Orford, Mrs. Promlitz, Mrs. A. Roley, Mrs. Rosen, Mrs. Schmidt, Mrs. Solnick, Stanley Dairy (Pty.) Ltd.

Christmas Parties:

Once again there was great activity at the Clinic during the month of December, 1957. Christmas Parties were uppermost in the minds of many. Mrs. Pritchard, assisted by Mrs. Basson, Mrs. Rieker, Mrs. Owers, Mrs. O'Reilly, Mrs. Parkes, Mrs. Barclay and Mrs. Rawlinson

worked extremely hard throughout the year to supply gifts to our patients, the Chronic Sick, the Blind and to our Staff. We are sorry to report that, owing to the great increase in the numbers of patients attending these parties, Mrs. Pritchard and her helpers are no longer able to undertake this very arduous task, which has been a feature of Christmas time at the Clinic for so many years. Words are inadequate to express fully our gratitude and appreciation to them for their wonderful efforts in the past. The American Women's Sewing Group, convened by Mrs. Gearling, produced attractive and useful garments which were distributed at these parties. We are very grateful for their wonderful contribution and the help they give at the parties.

Professor J. Hyslop was in the Chair at the Blind Party, when the Choir from Ezenzeleni again treated us to some really lovely singing. Then Lemmy Special Mabasa and his Penny Whistle Band entertained us with their music, which was enjoyed by all. We were especially pleased to see Mr. Cohen at the party and to learn of his continued progress back to health after his recent illness. Mr. Sharpe brought his tape recorder and took recordings of the Choir's singing.

The Christmas Fund received donations in cash and kind from the following:

Mrs W. Aronsohn	£1 0 0	Mr. Hoosen Jaybhay ...	3 0 0
Acott, Jill & Michael ...	14 2	Mrs. Kershaw	1 0 0
Aircraft Operating Co. ...	5 5 0	Native Commissioner ...	20 0 0
Astra Aircraft Co.	2 2 0	Payne, Mrs. A. E.	1 0 0
Barker, A.	1 6 0	Rand Daily Mail Christ-	
Cheeseborough - Ponds ...	3 3 0	mas Fund	30 0 0
Cigarette Importers	15 15 0	Roedean School	3 3 0
Coles, Sister	8 18 9	Smith, Miss C.	3 3 0
Colgate-Palmolive	2 2 0	Stanley Motors	3 3 0
Eriksens Consolidated		"Star"	2 5 0
Holdings	2 2 0	Sydney Clow & Co., Ltd.	5 5 0
Field Agencies	3 3 0	Prof. and Mrs. W. G. Sut-	
Field Aircraft Co.	2 0 0	ton	17 10 0
Anonymous per Dr. S.		Trew, Dr.	1 0 4
Gauntlett	5 0 0	Union Liquid Air Co. ...	10 10 0
Henwoods Ltd.	1 1 0	Waverley Girls' High	
Hire Purchase Discount		School	10 10 0
Co.	5 5 0	Wolwyn, Mrs. A. R.	1 10 0
Hurlingham Charities ...	10 0 0		

Father Colman; Dicks Sweet Co.; Gallagher's Bakery; Green's Fresh Meat Supply Co.; Nels Rust Dairies; O.G. Bazaars; Mr. and Mrs. Pugh; Thrupps; Vulco Chemical Ltd.; Waverley Girls' High School; Willie Wong; Wynberg Meat Market; Wynberg Fruit Market; Woolworths Ltd.

Staff Parties:

At Christmas time a combined Staff Party was given in Room 12, which was cleared and set aside for dancing. The room looked gay with streamers and garlands and a large Christmas tree decorated one corner. The music was supplied by Wilson Ramathatha's Band, Bolton Brothers, Edmund Piliso's Orchestra and Boswell Brothers.

A cold Christmas Dinner with the traditional hot Christmas pudding was arranged by the Sisters. To one and all, who helped to make this such a successful evening, we offer our very warmest thanks.

Annual General Meeting:

Mr. H. C. Koch, President of the Chamber of Mines, very kindly accepted the invitation to address the Meeting which was held on the 24th August, 1957, and moved the adoption of the Annual Report. Professor W. G. Sutton, Principal of the University of Witwatersrand, seconded the motion.

We are again indebted to Mr. and Mrs. Nel for making the local arrangements.

A vote of thanks to the speakers was moved by Mr. Nyamende.

The Meeting was opened with a prayer by the Rev. G. W. G. Lawrence, Bishop of the Apostolic Church, who also closed the Meeting with a Benediction and we are most grateful to him for his kind assistance and support.

The Choir from the Holy Cross Convent rendered songs twice during the Meeting. Their singing was very much enjoyed and we thank them most sincerely.

After the Meeting tea was served. We convey our thanks to Mrs. Aronsohn and Mrs. Goodman, who were in charge of organising the teas and the Martha Washington Club who provided such delicious refreshments.

General:

It is impossible to mention all the friends who helped us at Christmas and during the year, but we should like them to know that we are sincerely grateful.

ALEXANDRA HEALTH CENTRE

BALANCE SHEET

1957	ACCUMULATED FUNDS			
	Balance at 31st March, 1957	£45,001		
	ADD—Bequests	400		
	Transfers from			
	Motor Car Replacement Fund	£916		
	Building Fund—Extension to Clinic	1,852		
	Wheel Chair Fund	22	2,790	
			48,191	
£45,001	LESS—Excess of Expenditure over Income for year	2,030	£46,161	
	MOTOR CAR REPLACEMENT FUND			
	Balance at 31st March, 1957	525		
	Grant from Students' Rag Committee	250		
	Bequest	141		
			916	
525	LESS—Amount spent, transferred to Accumulated Funds	916	—	
239	DENTAL SURGERY ESTABLISHMENT FUND		239	
	Balance at 31st March, 1957			
	HALL BUILDING FUND			
	Balance at 31st March, 1957	2,494		
	Donations and Bequests	2,080		
2,494	Interest	140	4,714	
	BUILDING FUND—EXTENSIONS TO CLINIC			
	Donations	2,825		
	LESS—Amount spent, transferred to Accumulated Funds	1,852	973	
86	DOCTOR'S HOUSE MAINTENANCE FUND		86	
	Balance at 31st March, 1957			
	WHEEL CHAIR FUND			
	Balance at 31st March, 1957	22		
22	LESS—Amount spent, transferred to Accumulated Funds	22	—	
2,069	CREDITORS		3,005	
1,000	PROVISION FOR MAINTENANCE AND REPAIRS		—	
<u>£51,436</u>			<u>£55,178</u>	

O. D. SCHREINER, Chairman.
HELEN M. HYSLOP, Honorary Treasurer.

To the Members,

ALEXANDRA HEALTH CENTRE AND UNIVERSITY CLINIC.

We have examined the books and accounts and vouchers of the Clinic and have satisfied ourselves of the existence of the securities. We have obtained all the information and explanations which, to the best of our knowledge and belief, were necessary for the purposes of our audit. In our opinion proper books of account have been kept by the Clinic, so far as appears from our examination of those books.

The attached Balance Sheet and Income and Expenditure Account are in agreement with the books of account and, in our opinion, and to the best of our information and according to the explanations given to us, the Balance Sheet gives a true and fair view of the state of the Clinic's affairs as at 31st March, 1958, and the Income and Expenditure Account gives a true and fair view of the deficit for the year ended on that date.

VAUGHAN, KEY & PAYNE,
Chartered Accountants,
Honorary Auditors.

Johannesburg.
23rd June, 1958.

AND UNIVERSITY CLINIC

AS AT 31st MARCH, 1958.

1957	FIXED ASSETS			
	Land and Buildings			
£32,784	Stands 189, 190, 191 and 192 Wynberg, with buildings thereon, at cost		£34,600	
	Furniture and Equipment			
	Balance at 31st March, 1957, at cost less amounts written off	£793		
	Cost of Additions during year	68		
793	LESS—Depreciation	861	775	
	Medical Equipment			
	Balance at 31st March, 1957, at cost less amounts written off	228		
	Cost of Additions during year	48		
228	LESS—Depreciation	276	212	
	Dental Equipment			
	Balance at 31st March, 1957, at cost less amounts written off	24		
24	LESS—Depreciation	5	19	
	Motor Cars			
	Balance at 31st March, 1957, at cost less amounts written off	1,089		
	Car purchased during year	1,015		
1,089	LESS—Depreciation	2,104	1,052	
34,918		1,052	£36,658	
	HALL BUILDING FUND INVESTMENTS—			
	as per Contra			
	Fixed Deposit	1,045		
	Savings Account	3,500		
	Interest Accrued	67		
2,494	Cash	102	4,714	
	CURRENT ASSETS			
	Stocks on Hand			
	Medical and Surgical Supplies	1,389		
1,467	Nurses' Uniforms	340	1,729	
231	Containers on Hand		220	
4,115	Sundry Debtors		3,724	
150	Payments in Advance		157	
8,061	Cash at Bank, on Hand and on Deposit		7,976	
14,024			13,806	
<u>£51,436</u>			<u>£55,178</u>	

ALEXANDRA HEALTH CENTRE

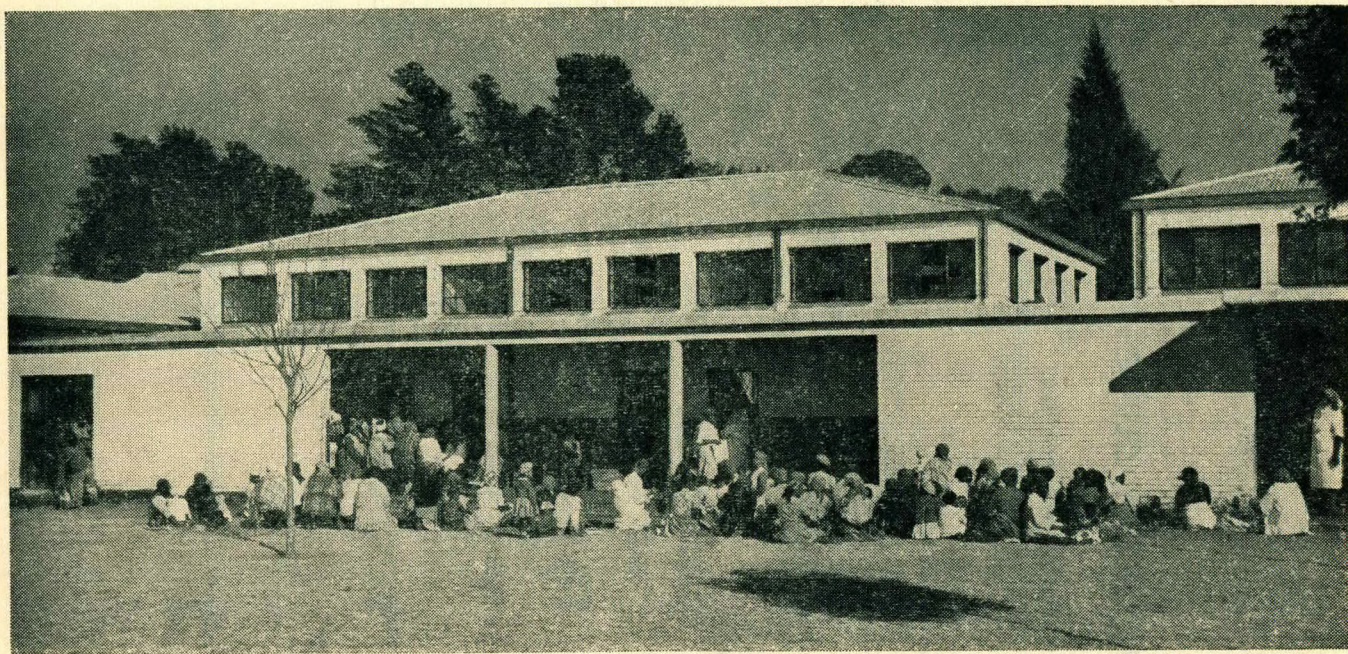
INCOME AND EXPENDITURE ACCOUNT

1957		£970
£778	Administrative Salaries	118
122	Ambulance Charges	1,525
1,329	Clerical Salaries	1,052
	Depreciation:	
948	Motor Cars	86
86	Furniture and Fittings	64
76	Medical Equipment	5
6	Dental Surgery Equipment	7,333
6,242	Doctors' Salaries	346
301	General Expenses	59
90	General Household Supplies	299
227	Insurance	206
193	Laundry	—
379	Loss on Sale of Motor Car	
1,334	Maintenance and Repairs—Expended	£1,279
1,000	Less—Provided Previous Year	1,000
		279
2,334	Motor Car Expenses	2,367
1,794	Medical and Surgical Supplies	9,872
9,018	Printing and Stationery	673
457	Rations for Domestic Staff	78
80		
	Salaries and Allowances:	
	Nurses:	
7,515	Salaries	8,092
1,625	Board, Lodging, Fuel, Light and Laundry	1,508
472	Uniforms	504
	Sisters:	
1,889	Salaries	1,883
714	Board, Lodging, Fuel, Light and Laundry	665
		12,652
12,215	Telephone Rent and Calls	251
228	Wages	1,012
725	Water, Light and Heating	341
284		
		£39,588
		£37,912

AND UNIVERSITY CLINIC

FOR THE YEAR ENDED 31st MARCH, 1958.

1957		
£7,133	Patients' Fees	£7,365
	Donations and Grants	
1,800	University of the Witwatersrand	£1,800
1,850	Students' Rag Committee	2,250
5,000	Transvaal Province	5,000
937	City of Johannesburg	1,000
	Alexandra Health Committee and Peri-Urban Areas	
600	Health Board	600
12	Martha Washington Club	12
2,890	Sundry Donations	2,852
		13,514
	Refunds	
	Union Government—Department of Health:	
8,536	On Nurses' Emoluments	£8,345
487	On Nurses' Uniforms	400
	On Nurses' Transport—for year ended 31st	
900	March, 1957	450
		9,195
9,923	Alexandra Health Committee and Peri-Urban Areas	
	Health Board:	
	On T.B. and V.D. Control:	
342	Clerical Salaries	518
1,077	Doctors' Salaries	1,077
4,262	Medical and Surgical Supplies	3,855
1,171	Nurses' Salaries	1,567
51	Nurses' Uniforms	60
180	Rent	180
—	Sundries	6
		7,263
7,083	National Institute for Personnel Research and Alex-	
	andra Anti-T.B. Control—Rent	—
90		
		16,458
17,096	Interest	206
184	Rent	15
—	Excess of Expenditure over Income transferred to	
410	Accumulated Funds	2,030
		£39,588
		£37,912



By courtesy of "The Star"

ALEXANDRA HEALTH CENTRE AND UNIVERSITY CLINIC

MEDICAL STAFF:

Medical Superintendent: S. P. JACOBSON, M.R.C.S., L.R.C.P.

Assistant Medical Officers: L. GRANAT, M.B., Ch.B.
F. SCHNEIER, M.B., B.Ch.
S. MACHANICK, M.B., Ch.B.

Part-time Medical Officers: S. SALMOND, M.B., B.Ch.
S. DANZIG, M.B., B.Ch.
C. WYNDHAM, M.D.
(week-end duties).

Dental Officers: R. M. TREN, L.D.S., R.C.S. (Edin.)
N. J. SACHS, D.D.S., Wit.

HONORARY VISITING STAFF

Obstetrician and Gynaecologist: O. S. HEYNS, M.R.C.S., L.R.C.P., M.R.C.O.G.

Consultants: S. SHIPPEL, M.B., B.Ch., M.D.
C. MICHELOW, M.B., B.Ch., D.Obst. R.C.O.G.,
M.R.C.O.G.

Paediatrician: Dr. J. GRIFFITHS, M.B., B.Ch. Rand, D.Ch. (R.C.P. & S. Eng.).

Ophthalmologist: Dr. L. MEYERSOHN, M.B., B.Ch. Rand, D.O. (R.C.P. & S.).

Surgeon: Dr. B. De SAXE, M.B., B.Ch. Rand, F.R.C.S. (Edin.).

Tuberculosis Consultants: A. I. LICHTER, F.R.C.S.
M. ZION, M.B., B.Ch., M.R.C.P.
L. BRAUDO, M.B., B.Ch., M.R.C.P.
(Edin.).

Dental Consultant: G. A. FRASER, D.M.D. (Harvard).

NURSING STAFF:

Superintendent: Sister MARY CANISIUS O'CONNOR.

Assistants: Sister MARY MATTHEW STANTON.
Sister MARY CELESTINE WRIGHT.
Sister MARY JOAN KELLY.
Sister FRIDAH CEDEKULU (T.B.).

NURSES:

For Whole Year:
MARY THEMA.
ROSE SEKHATLE.
RAHAB TSEHLO.
ELIZABETH DLAMINI.
PRISCILLA LETSOALO.
MARGARET DHLAMINI.
WINNIE DEBETLE.

ANGELINA NAMANE
EDITH MADZIKANE.
JACOBINA NDABA.
ANDRONICA ROBINSON.
ZIPPORAH KUPANE.
NOMVUYA WILLIAMS.
WILHELMINA MOLOTO.
CATHERINE MPHAGO.

Elevent Months:
WILHELMINA MOKOKO.

Ten Months:
CATHERINE NHLAPO.
MARIA VILAKAZI.

Nine Months:
CECILIA MANGEIPHU.
PATRICIA MAMABOLA.
AMELIA MAKHALE.

Eight Months:
LEAH MOLOKO.
THERESA MSUMBU.
BEATRICE DHLADHLA.
DORAH MWELESE.

Seven Months:
ELIZABETH DHLAMINI.
EDMARA MAKHUBEDU.
MARY KGANYAGO.
ANNA RADEBE.

Six Months:
REBECCA MAROO.
MARTHA MABOKELA.
MARTHA RADINE.

Five Months:
ADELAIDE SIBULA.
PATRICIA MOKOLOPO.
AGNES SABANHU.
JOHANNA TIDIMANE.

Four Months:
FRANCINI DHLAMINI.

ELFRIDA TLAKULU.
PAULINA NTELENI.
FLAVIA DHLAMINI.
ANGELINA KAMBULE.
ANNA MALAKA.

Three Months:
GRACE PHIRI.
MARTHA SEOPELA.
MATILDA FASSI.
MARYANNE LIKGALE.

Two Months:
LETTA MOSIKATSANE.
ELIZABETH DOLOMO.
MULA NAPOAL.
DOROTHY BOOI.
MARGARET LAMOLA.
MARTHA MANGENELELE.
ANNA MOKATE.
MARY NCUBE.
FRANCES SANAONI.
CYNTHIA VENTER.
JANE NONDYEBXABA.

One Month:
SCHOLASTICA MASEMOLA.
JANETTE BUTHELEZI.
MARGARET SEILANE.
MIRIAM MASEKO.
SALOME MOTIANG.
OLIVE BOKOKA.
ELLEN DLAMINI.
BRENDA GOPANI.
EMILY LEBESE.
SUSAN TEKANE.

MALE NURSE:

PHILIP NKALI (full year).

ADMINISTRATIVE STAFF:

B. M. M. HURST (Eight months).
G. M. CARTER (Five months).

D. MOSENTHAL (Nine months).
D. MACKAY (Three months).

CLERICAL STAFF:

Whole Year:
MOSES MOFOLO.
EDWARD KEKANE.
STANLEY LOUW.
WILSON MKIZE.

Part-time:
HENRY LUGOJOLO.

Seven Months:
DANIEL CUMMINGS.

Six Months:
LAWRENCE MAYISELA.

Five Months:
SIMON NOGE.
THEO MTHEMBO.

Two Months:
LUMLEY WEYL.

One Month:
JOSIAH JELE.
GILBERT NGWANGQA.
SIMON SILEBE.
BENJAMIN ZWANE.

HONORARY AUDITORS:

Vaughan, Key & Payne.

Collection Number: AD1715

SOUTH AFRICAN INSTITUTE OF RACE RELATIONS (SAIRR), 1892-1974

PUBLISHER:

Collection Funder:- Atlantic Philanthropies Foundation

Publisher:- Historical Papers Research Archive

Location:- Johannesburg

©2013

LEGAL NOTICES:

Copyright Notice: All materials on the Historical Papers website are protected by South African copyright law and may not be reproduced, distributed, transmitted, displayed, or otherwise published in any format, without the prior written permission of the copyright owner.

Disclaimer and Terms of Use: Provided that you maintain all copyright and other notices contained therein, you may download material (one machine readable copy and one print copy per page) for your personal and/or educational non-commercial use only.

People using these records relating to the archives of Historical Papers, The Library, University of the Witwatersrand, Johannesburg, are reminded that such records sometimes contain material which is uncorroborated, inaccurate, distorted or untrue. While these digital records are true facsimiles of paper documents and the information contained herein is obtained from sources believed to be accurate and reliable, Historical Papers, University of the Witwatersrand has not independently verified their content. Consequently, the University is not responsible for any errors or omissions and excludes any and all liability for any errors in or omissions from the information on the website or any related information on third party websites accessible from this website.

This document forms part of the archive of the South African Institute of Race Relations (SAIRR), held at the Historical Papers Research Archive at The University of the Witwatersrand, Johannesburg, South Africa.