

SUIDWES-AFRIKA

BECHUANALAND

SOUTHERN RHODESIA

LIMPOPORIVIER

NOAMBIEQUE

TRANSVAAL

PRETORIA

JOHANNESBURG

SWAZILAND

LOURENCO MARQUES

ORANJE-VRYSTAAT

BLOEMFONTEIN

BASUTOLAND

NATAL

PIETERMARITZBURG

DURBAN

CAPE PROVINCE

VERSPREIDING van DISTRIKSGENEESHERE
(Volgens die Dept. van Gesondheid)

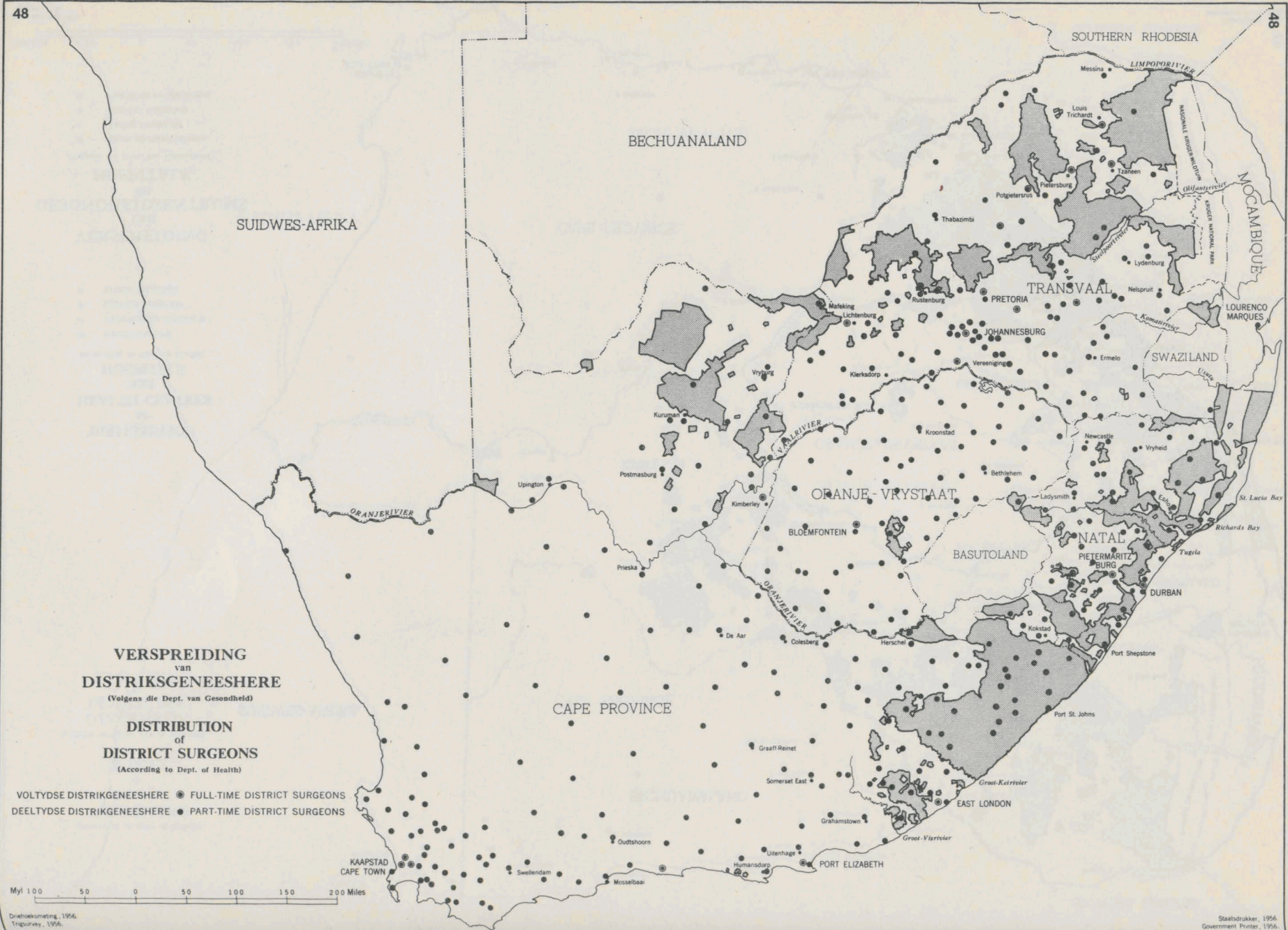
DISTRIBUTION of DISTRICT SURGEONS
(According to Dept. of Health)

VOLTYDSE DISTRIKSGENEESHERE ● FULL-TIME DISTRICT SURGEONS
DEELTYDSE DISTRIKSGENEESHERE ● PART-TIME DISTRICT SURGEONS

Myl 100 50 0 50 100 150 200 Miles

Driehoeksmeting, 1956.
Tripurvey, 1956.

Staatsdrukker, 1956.
Government Printer, 1956.



SUIDWES-AFRIKA

BECHUANALAND

SOUTHERN RHODESIA

TRANSVAAL

JOHANNESBURG

PRETORIA

ORANJE-VRYSTAAT

BLOEMFONTEIN

BASUTOLAND

NATAL

PIETERMARITZBURG

DURBAN

CAPE PROVINCE

EAST LONDON

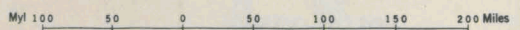
PORT ELIZABETH

KAAPSTAD
CAPE TOWN

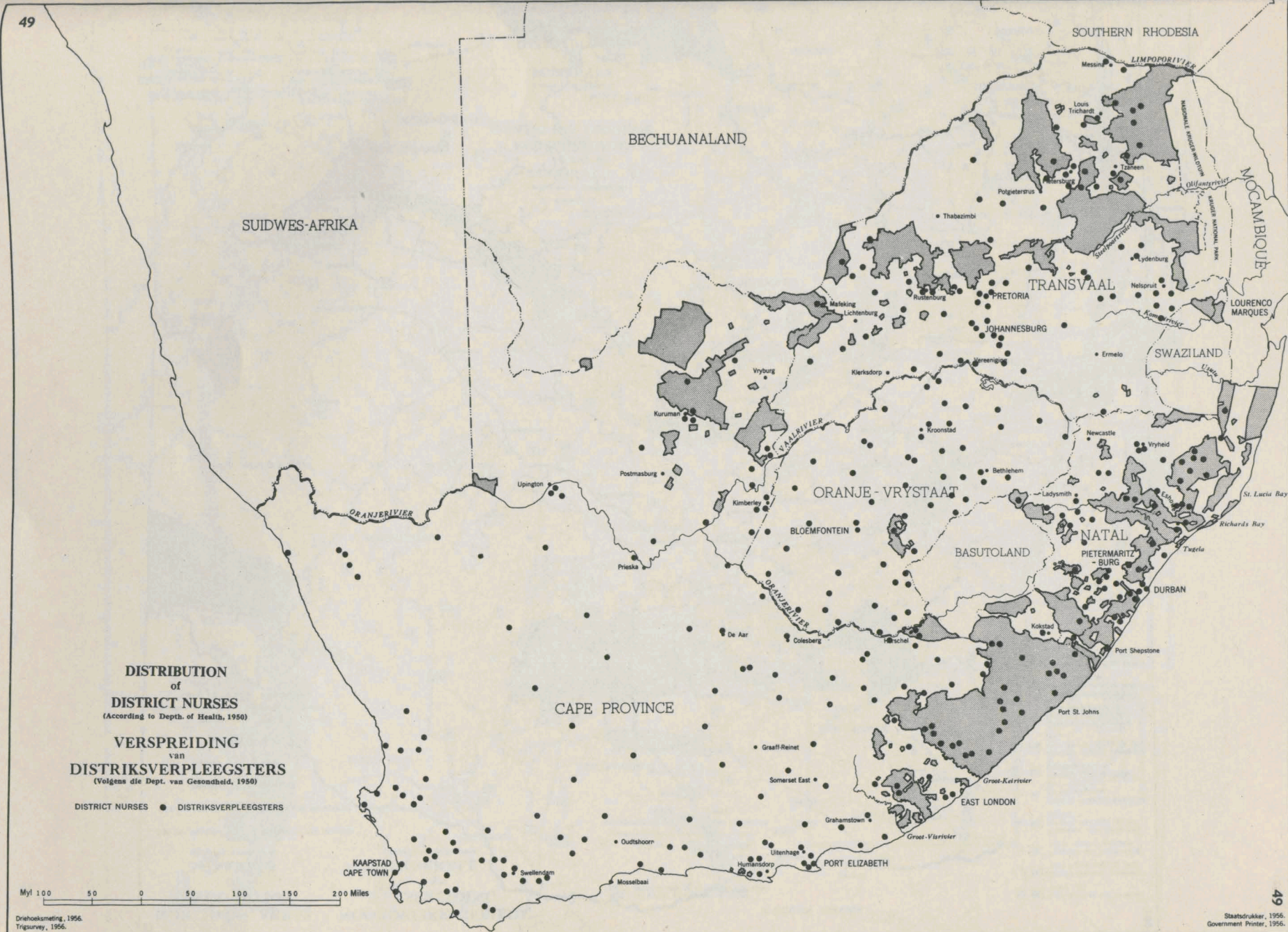
DISTRIBUTION
of
DISTRICT NURSES
(According to Dept. of Health, 1950)

VERSPREIDING
van
DISTRICKSVERPLEEGSTERS
(Volgens die Dept. van Gesondheid, 1950)

DISTRICT NURSES ● DISTRICKSVERPLEEGSTERS



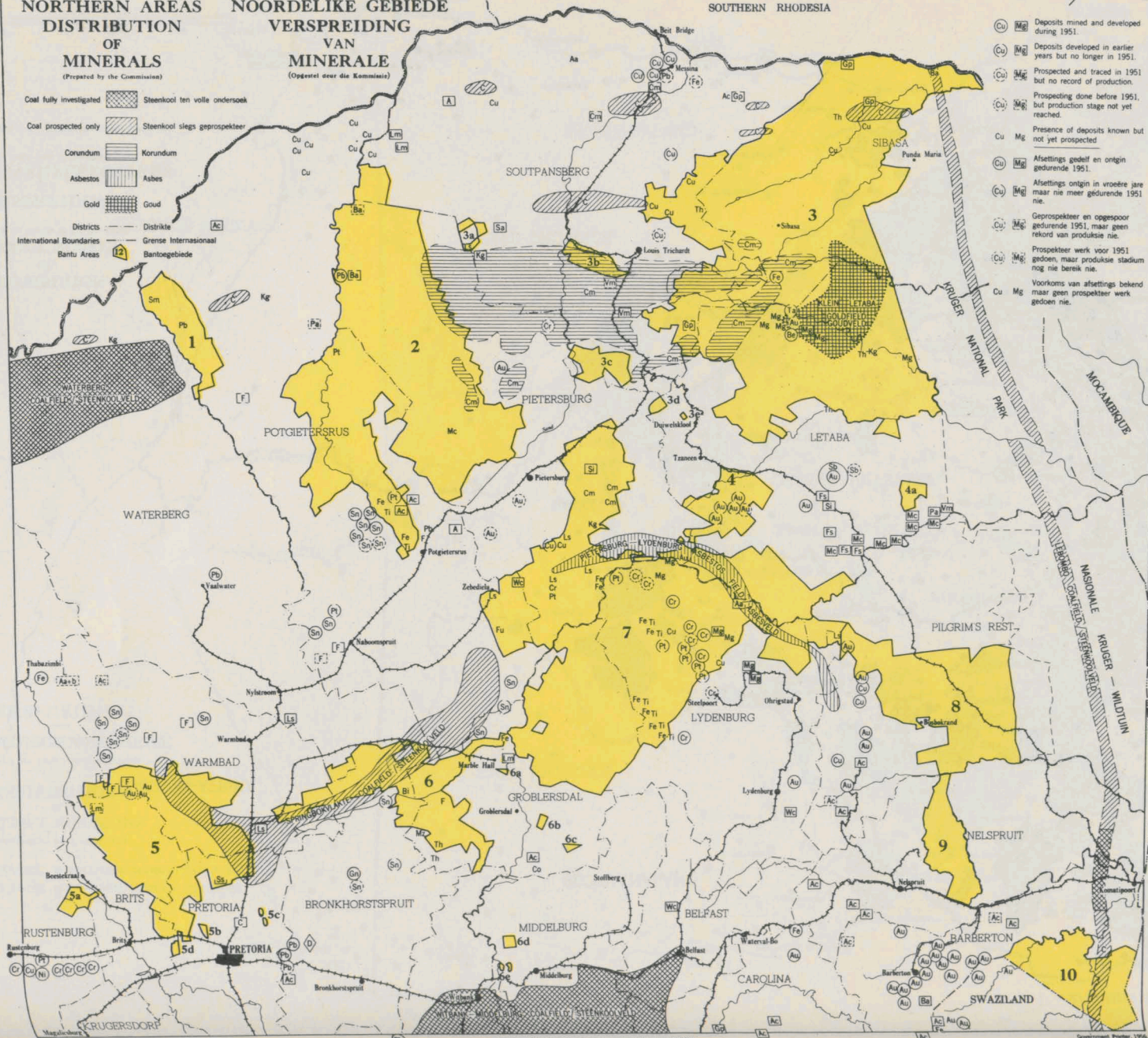
Driehoeksmeting, 1956.
Trigonometry, 1956.



NORTHERN AREAS **NOORDELIKE GEBIEDE**
DISTRIBUTION **VERSPREIDING**
OF **VAN**
MINERALS **MINERALE**
(Prepared by the Commission) *(Opgedat deur die Kommissie)*

- Coal fully investigated Steenkool ten volle ondersoek
- Coal prospected only Steenkool slegs gesprospekteer
- Corundum Korundum
- Asbestos Asbes
- Gold Goud
- Districts Distrikke
- International Boundaries Grense Internasionaal
- Bantu Areas Bantoegebiede

- Deposits mined and developed during 1951.
- Deposits developed in earlier years but no longer in 1951.
- Prospected and traced in 1951 but no record of production.
- Prospecting done before 1951, but production stage not yet reached.
- Presence of deposits known but not yet prospected.
- Afsittings gedelf en origin gedurende 1951.
- Afsittings ontgin in vroeëre jare maar nie meer gedurende 1951 nie.
- Gesprospekteer en opgespoor gedurende 1951, maar geen rekord van produksie nie.
- Prospektier werk voor 1951 gedoen, maar produksie stadium nog nie bereik nie.
- Voorkoms van afsittings bekend maar geen prospektier werk gedoen nie.

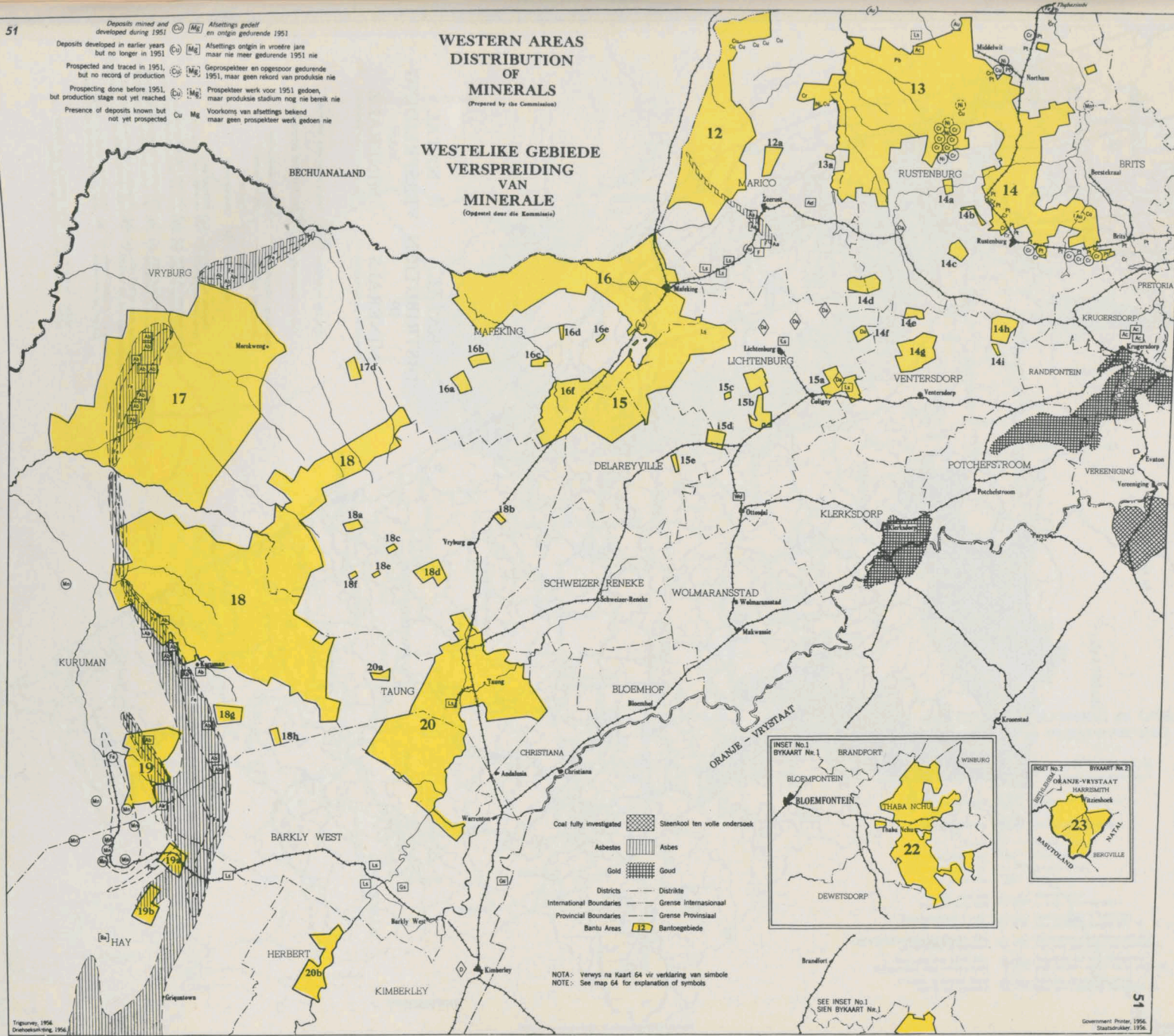


NOTE: Verreks na Kaart SA van verhoeding van simbole
 NOTE: See map SA for explanation of symbols

Deposits mined and developed during 1951 (Mg) Afsettings gedelf en ontwikkel gedurende 1951
 Deposits developed in earlier years but no longer in 1951 (Mg) Afsettings ontwikkel in vroeëre jare maar nie meer gedurende 1951 nie
 Prospected and traced in 1951, but no record of production (Mg) Geprospekteer en opgespoor gedurende 1951, maar geen rekord van produksie nie
 Prospecting done before 1951, but production stage not yet reached (Mg) Prospektieer werk voor 1951 gedoen, maar produksie stadium nog nie bereik nie
 Presence of deposits known but not yet prospected (Cu Mg) Voorkoms van afsettings bekend maar geen prospektieer werk gedoen nie

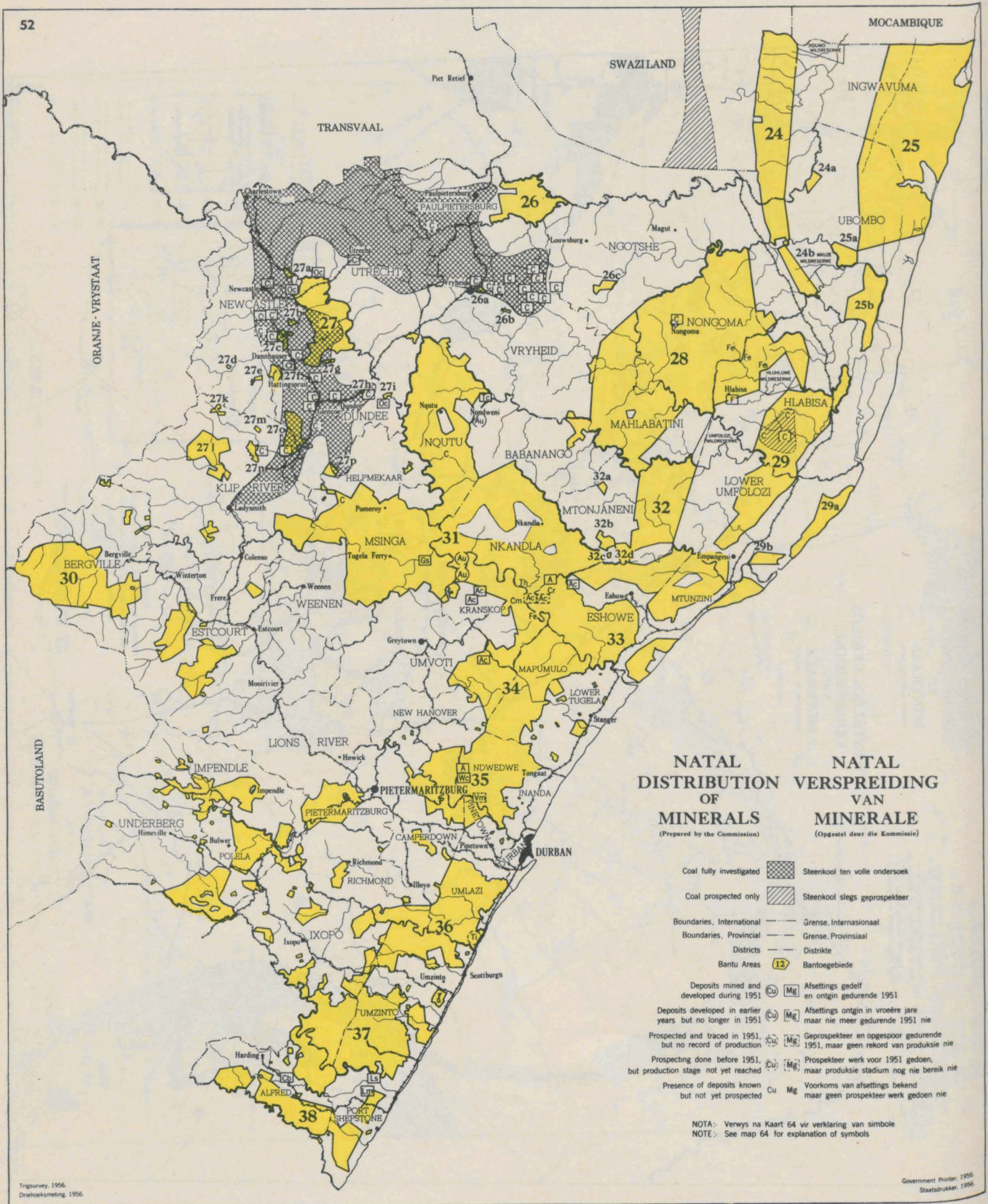
WESTERN AREAS DISTRIBUTION OF MINERALS
 (Prepared by the Commission)

WESTELIKE GEBIEDE VERSPREIDING VAN MINERALE
 (Opgestel deur die Kommissie)

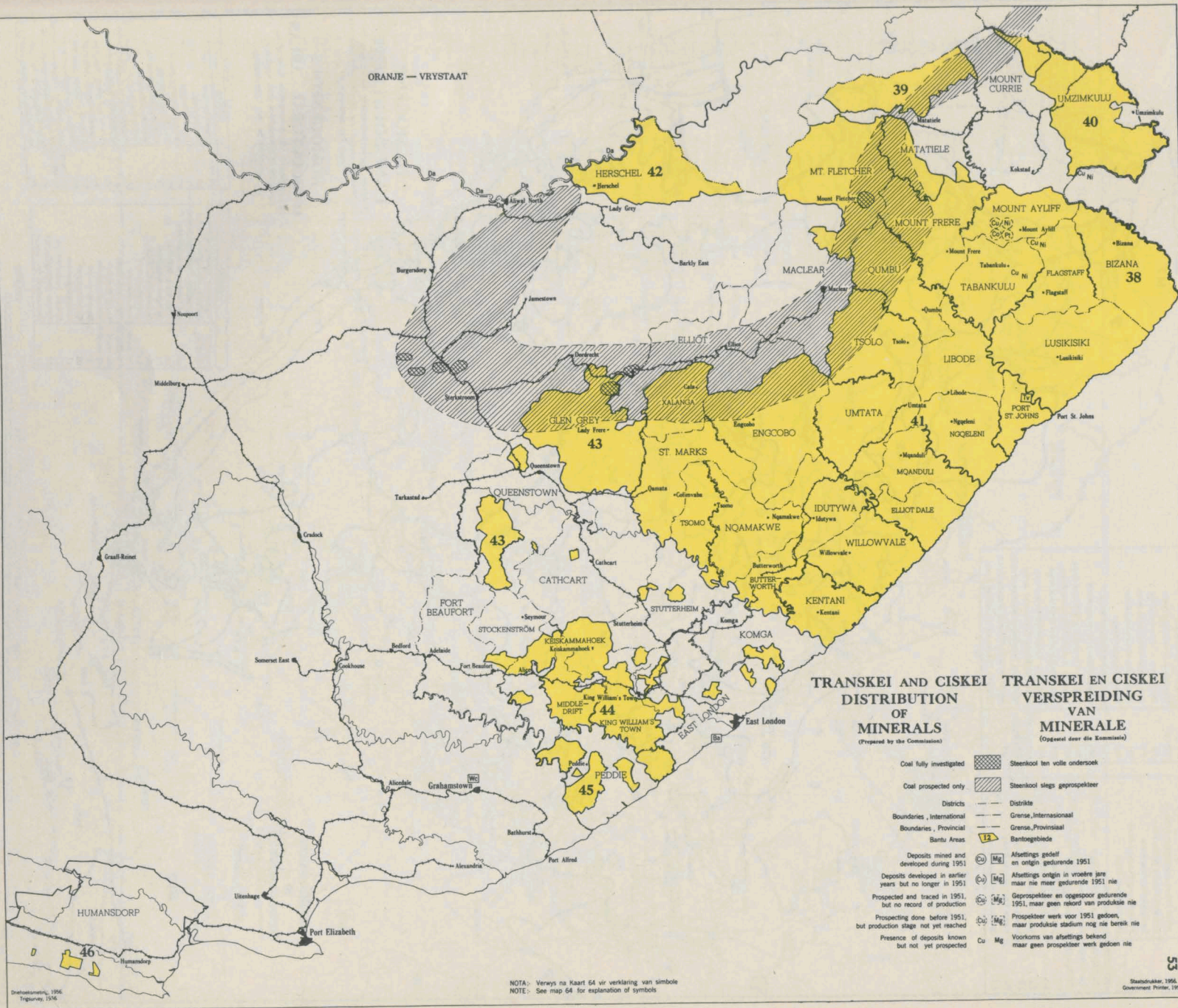


Coal fully investigated (Steenkool ten volle ondersoek)
 Asbestos (Asbes)
 Gold (Goud)
 Districts (Distrikte)
 International Boundaries (Grense Internasionaal)
 Provincial Boundaries (Grense Provinsiaal)
 Bantu Areas (Bantoegebiede)

NOTA: Verwys na Kaart 64 vir verklarings van simbole
 NOTE: See map 64 for explanation of symbols



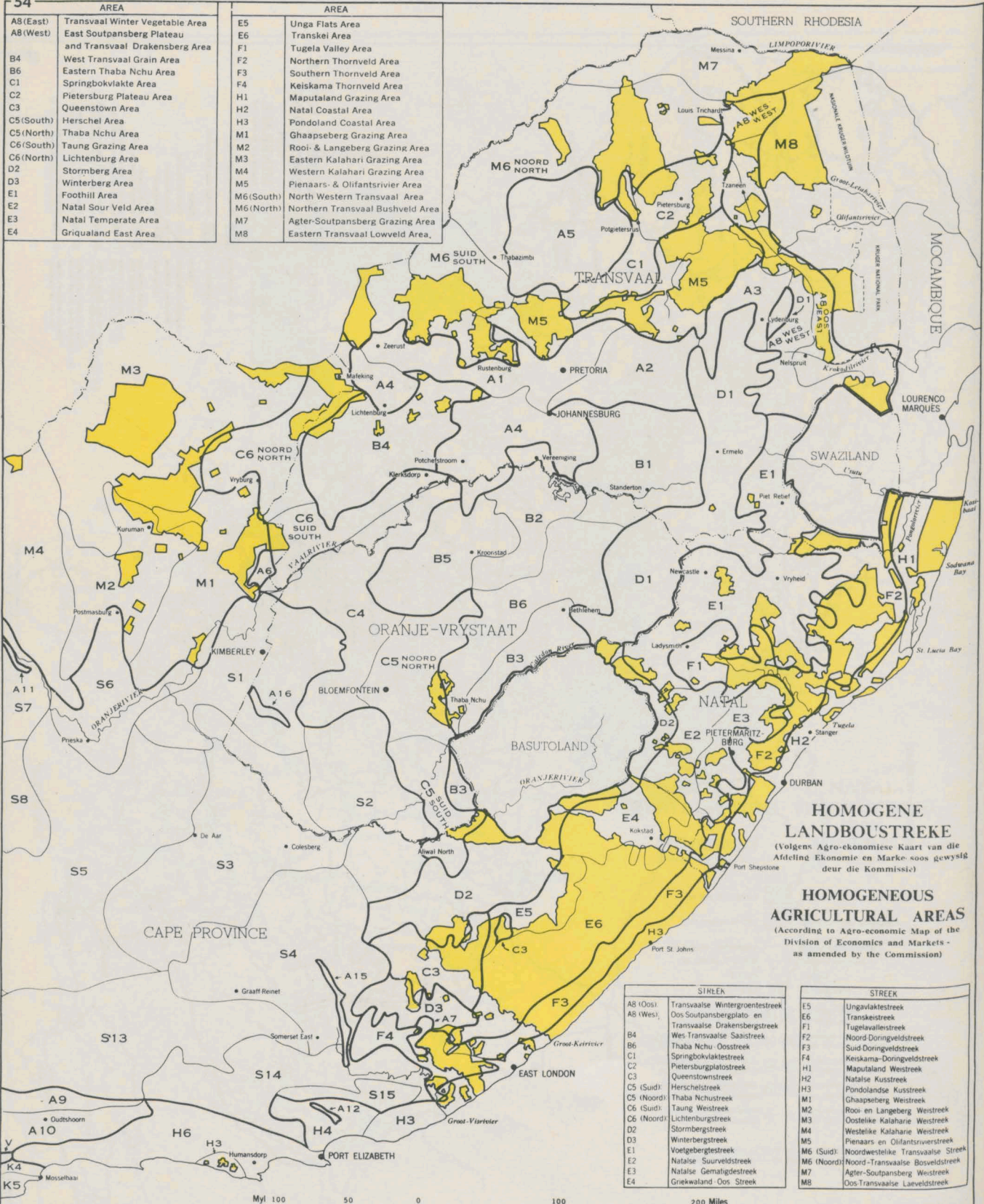
ORANJE — VRYSTAAT



NOTE: Verwys na Kaart 54 vir verklaring van simbole
 NOTE: See map 54 for explanation of symbols

Staatsdrukker, 1954
 Government Printer, 1954

AREA		AREA	
A8(East)	Transvaal Winter Vegetable Area	E5	Unga Flats Area
A8(West)	East Soutpansberg Plateau and Transvaal Drakensberg Area	E6	Transkei Area
B4	West Transvaal Grain Area	F1	Tugela Valley Area
B6	Eastern Thaba Nchu Area	F2	Northern Thornveld Area
C1	Springbokvlakte Area	F3	Southern Thornveld Area
C2	Pietersburg Plateau Area	F4	Keiskama Thornveld Area
C3	Queenstown Area	H1	Maputaland Grazing Area
C5(South)	Herschel Area	H2	Natal Coastal Area
C5(North)	Thaba Nchu Area	H3	Pondoland Coastal Area
C6(South)	Taug Grazing Area	M1	Ghaapseberg Grazing Area
C6(North)	Lichtenburg Area	M2	Rooi- & Langeberg Grazing Area
D2	Stormberg Area	M3	Eastern Kalahari Grazing Area
D3	Winterberg Area	M4	Western Kalahari Grazing Area
E1	Foothill Area	M5	Pienaars- & Olifantsrivier Area
E2	Natal Sour Veld Area	M6(South)	North Western Transvaal Area
E3	Natal Temperate Area	M6(North)	Northern Transvaal Bushveld Area
E4	Griqualand East Area	M7	Agter-Soutpansberg Grazing Area
		M8	Eastern Transvaal Lowveld Area,

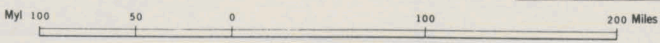


HOMOGENE LANDBOUSTREKE
 (Volgens Agro-ekonomiese Kaart van die Afdeling Ekonomie en Markte soos gewysig deur die Kommissie)

HOMOGENEOUS AGRICULTURAL AREAS
 (According to Agro-economic Map of the Division of Economics and Markets - as amended by the Commission)

SINLEK	
A8 (Oos)	Transvaalse Wintergroentestreek
A8 (Wes)	Oos Soutpansbergplato- en Transvaalse Drakensbergstreek
B4	Wes Transvaalse Saaitreek
B6	Thaba Nchu Oosstreek
C1	Springbokvlaktestreek
C2	Pietersburgplatoestreek
C3	Queenstownstreek
C5 (Suid)	Herschelstreek
C5 (Noord)	Thaba Nchustreek
C6 (Suid)	Taug Weststreek
C6 (Noord)	Lichtenburgstreek
D2	Stormbergstreek
D3	Winterbergstreek
E1	Voetbergstreek
E2	Natalse Suurveldstreek
E3	Natalse Gematigdeestreek
E4	Griqualand-Oos Streek

STREEK	
E5	Ungavaktestreek
E6	Transkeistreek
F1	Tugelavalleystreek
F2	Noord Doringveldstreek
F3	Suid Doringveldstreek
F4	Keiskama-Doringveldstreek
H1	Maputaland Westreek
H2	Natalse Kusstreek
H3	Pondolandse Kusstreek
M1	Ghaapseberg Westreek
M2	Rooi- en Langeberg Westreek
M3	Ooslike Kalaharie Westreek
M4	Weslike Kalaharie Westreek
M5	Pienaars- en Olifantsrivierstreek
M6 (Suid)	Noord-weslike Transvaalse Streek
M7 (Noord)	Agter-Soutpansberg Westreek
M8	Oos-Transvaalse Laeveldstreek



Dit is 'n reprodusie van 'n kaart wat in 1956 deur die Dierboerontwikkelingskommissie uitgegee is.

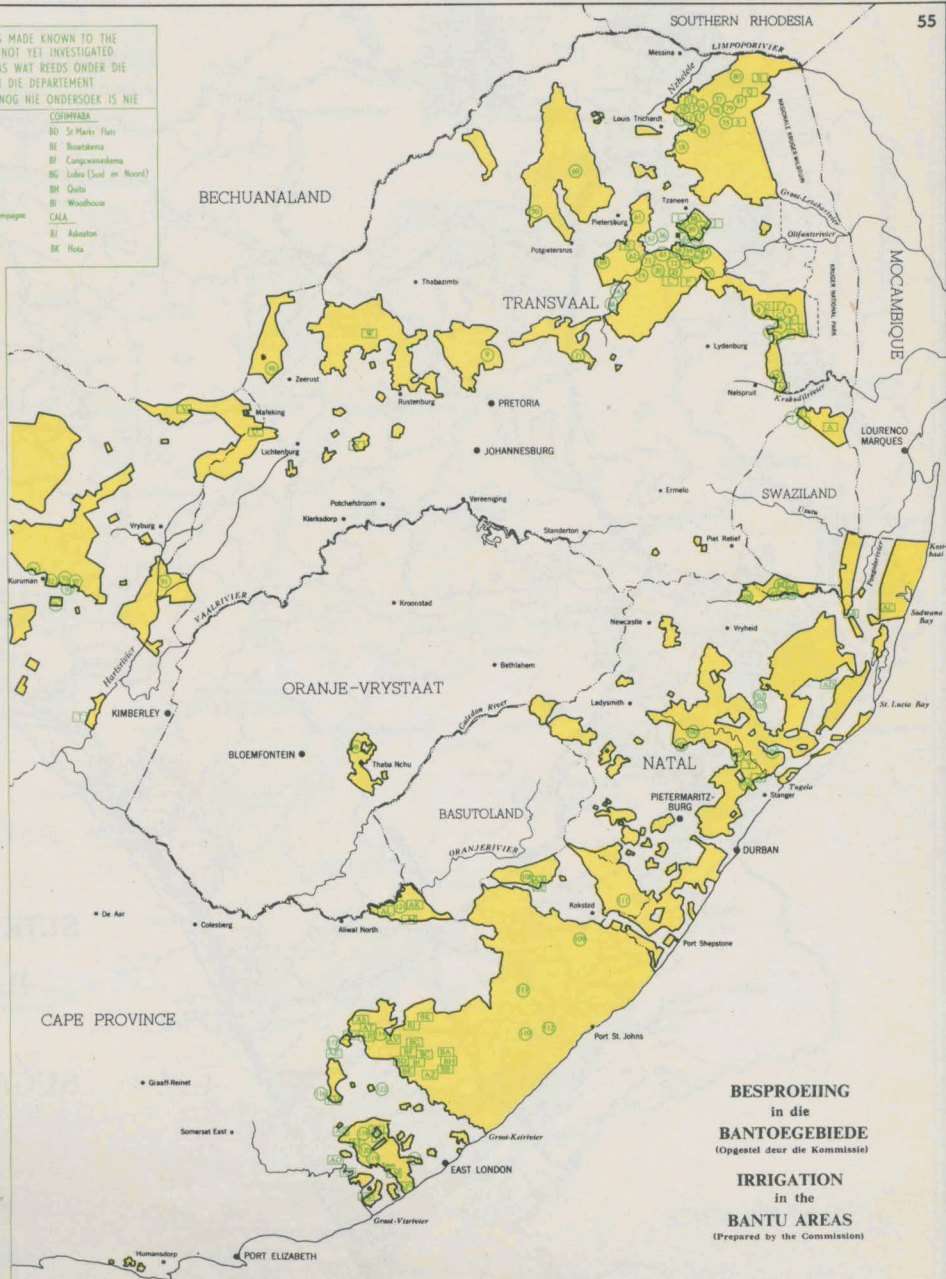
Staatsdrukker, 1956. Government Printer, 1956.

IRRIGATION SCHEMES IN BANTU AREAS AS AT 30/6/53
BESPROEINGSKEMAS IN BANTOEGEBIEDE SOOS OP 30/6/1953.

- (Numbers refer to position on map)
- | | |
|-------------------------------|----------------------------|
| BABERSTON | PREMIERHYN |
| 1 Matsiema Lokaan | 71 Utopanang |
| 2 Schoemansdal | SEKHUKHONLELAND |
| 3 Joppe Reef A & B | 72 Mochelburg |
| BOESBOKRAND | 73 Rietvlei |
| 4 Champagne | 74 Joubertskloof |
| 5 Champagne | SRABSA |
| 6 Champagne | 75 Duthois & Palmarijse |
| 7 Marie | 76 Rembrandt |
| 8 Zonkang | 77 Rembrandt |
| HAHMANSKRAAL | 78 Tona |
| 9 Tona | 79 Makop |
| LOUIS TRICHARDT | 80 Fochobee |
| 10 Mafisa in Lokaan | 81 Schiel |
| 11 Basconfontein | ZANTHIN |
| 12 Talamang | 82 Tona & Sedat |
| 13 Basconfontein | 83 Thaba |
| 14 Basconfontein | 84 Louisa |
| 15 Serobe in Doringshoek | 85 Craghead |
| 16 Mpana | 86 Sekonkoo |
| 17 Nkale voor No. 4 (Rabatse) | 87 Jubborg |
| 18 Mafisa | 88 Makaba |
| 19 Mafisa | 89 Mafisa & Rita |
| 20 Mafisa | 90 The Oaks |
| 21 Ploker | ZANTHIN |
| 22 Mafisa | 91 Tona |
| 23 Mafisa | KURUMAN |
| 24 Mafisa | 92 Mafisa |
| 25 Mafisa | 93 Mafisa |
| 26 Mafisa | 94 Mafisa |
| 27 Mafisa | 95 Mafisa |
| 28 Mafisa | 96 Mafisa |
| 29 Mafisa | 97 Mafisa |
| 30 Mafisa | 98 Mafisa |
| 31 Mafisa | 99 Mafisa |
| 32 Mafisa | 100 Tugela Terr |
| 33 Mafisa | 101 Mafisa |
| 34 Mafisa | SASABONG |
| 35 Mafisa | 102 Skema 1 |
| 36 Mafisa | 103 Skema 2 |
| 37 Mafisa | ESHOWE |
| 38 Mafisa | 104 Mafisa |
| 39 Mafisa | PAULPIETERSBURG |
| 40 Mafisa | 105 Mafisa |
| 41 Mafisa | MAPUMULO |
| 42 Mafisa | 106 Mafisa |
| 43 Mafisa | DRANSKOP |
| 44 Mafisa | 107 Mafisa |
| 45 Mafisa | MALATIILL |
| 46 Mafisa | 108 Mafisa |
| 47 Mafisa | HOUTI AVIAT |
| 48 Mafisa | 109 Mafisa |
| 49 Mafisa | UMTATA |
| 50 Mafisa | 110 Orange Grove |
| 51 Mafisa | UNZIELE |
| 52 Mafisa | 111 Mafisa |
| 53 Mafisa | LURCOI |
| 54 Mafisa | 112 Mafisa |
| 55 Mafisa | ISOLO |
| 56 Mafisa | 113 Mafisa |
| 57 Mafisa | LADY FRERE |
| 58 Mafisa | 114 Mafisa |
| 59 Mafisa | KING WILLIAM'S TOWN |
| 60 Mafisa | 115 Mafisa |
| 61 Mafisa | MIDDELBURT |
| 62 Mafisa | 116 Mafisa |
| 63 Mafisa | 117 Mafisa |
| 64 Mafisa | 118 Mafisa |
| 65 Mafisa | 119 Mafisa |
| 66 Mafisa | 120 Fort Cox |
| 67 Mafisa | HERSCHELL |
| 68 Mafisa | 121 Mafisa |
| 69 Mafisa | CHECHERY |
| 70 Mafisa | 122 Mafisa |

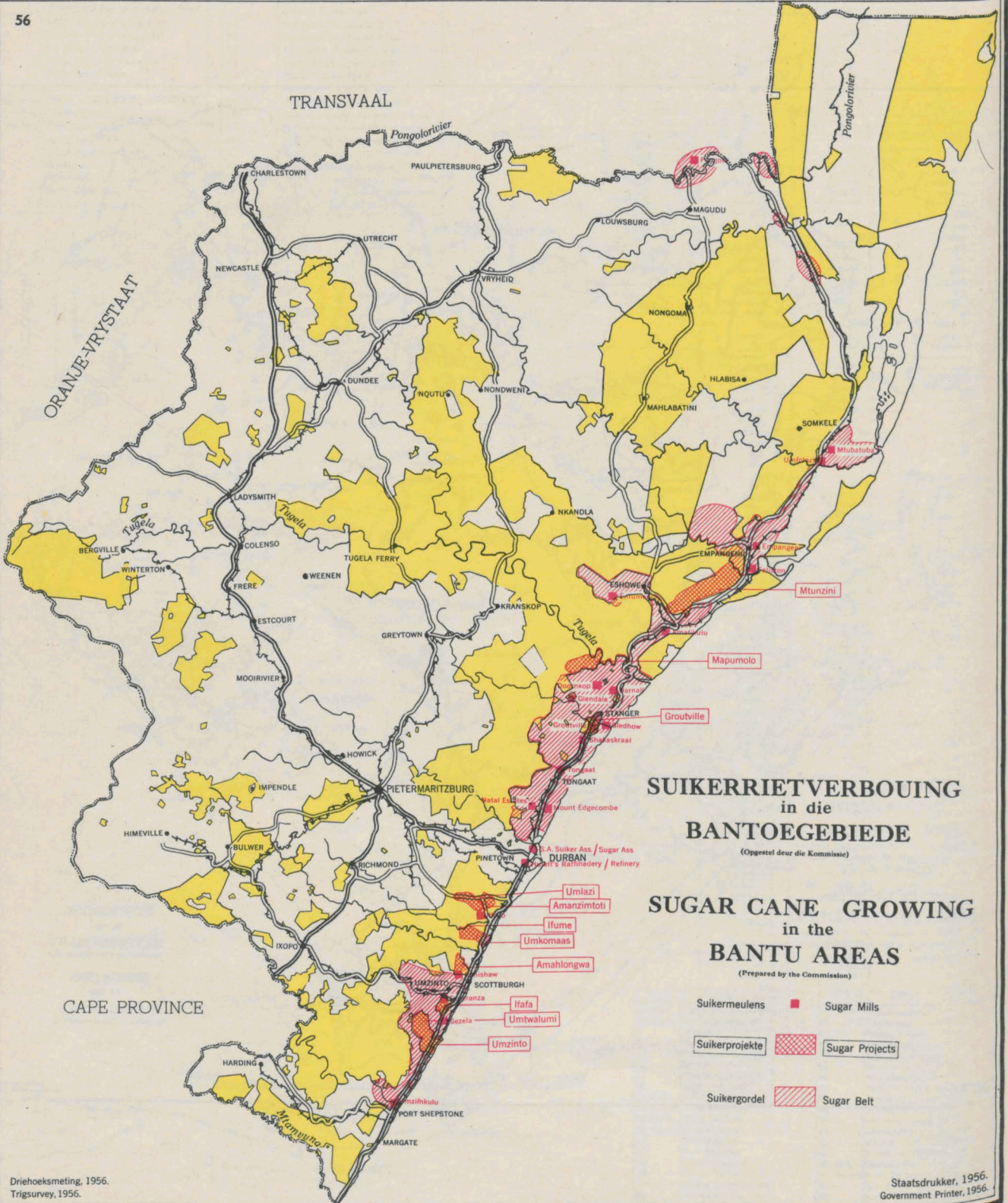
POSSIBLE SCHEMES MADE KNOWN TO THE DEPARTMENT BUT NOT YET INVESTIGATED
 MOONTLIKE SKEMAS WAT REEDS ONDER DIE AANDAG VAN DIE DEPARTEMENT
 GEKOM HET MAAR NOG NIE ONDERSOEK IS NIE

- | | |
|--------------------------|---------------------------|
| BABERSTON | CODRYAAR |
| A Komatjies | 80 St Marks Flats |
| BOESBOKRAND | 81 Bontatjies |
| B Champagne | 82 Champagne |
| C Marie Tonal dams | 83 Lokaan (Suid en Noord) |
| D Zandberg en Wale | 84 Oude |
| E Lokaan | 85 Woodhouse |
| F Woudkloof en Champagne | CALLA |
| G Eshburg | 86 Lokaan |
| H Sabatjies | 87 Hots |
| LETABA | |
| I Craghead | |
| J Mafisa Lokaan | |
| K Mafisa Lokaan | |
| NEBO | |
| L Talamang | |
| NELSPRUIT | |
| M Sandverdiema | |
| PETERSBURG | |
| N Mafisa | |
| PREMIERHYN | |
| O Mafisa | |
| SEKHUKHONLELAND | |
| P Mafisa | |
| SRABSA | |
| Q Mafisa | |
| R Mafisa | |
| S Mafisa | |
| HERBERT | |
| T Mafisa | |
| LICHTENBURG | |
| U Mafisa | |
| MALATIILL | |
| V Mafisa | |
| WINTERSBURG | |
| W Mafisa | |
| VENTERSBURG | |
| X Mafisa | |
| KRANSKOP | |
| Y Mafisa | |
| MAPUMULO | |
| Z Mafisa | |
| ESHOWE | |
| AA Mafisa | |
| AB Mafisa | |
| AC Mafisa | |
| AD Mafisa | |
| WHITTELEIA | |
| AE Mafisa | |
| KESGAMMANG | |
| AF Mafisa | |
| AG Mafisa | |
| AH Mafisa | |
| AI Mafisa | |
| AL Mafisa | |
| AM Mafisa | |
| AN Mafisa | |
| AO Mafisa | |
| AP Mafisa | |
| AQ Mafisa | |
| AR Mafisa | |
| AS Mafisa | |
| AT Mafisa | |
| AU Mafisa | |
| AV Mafisa | |
| AW Mafisa | |
| AX Mafisa | |
| AY Mafisa | |
| AZ Mafisa | |
| BA Mafisa | |
| BB Mafisa | |
| BC Mafisa | |



BESPROEIJING
 in die
BANTOEGEBIEDE
 (Opgeleed deur die Kommissie)

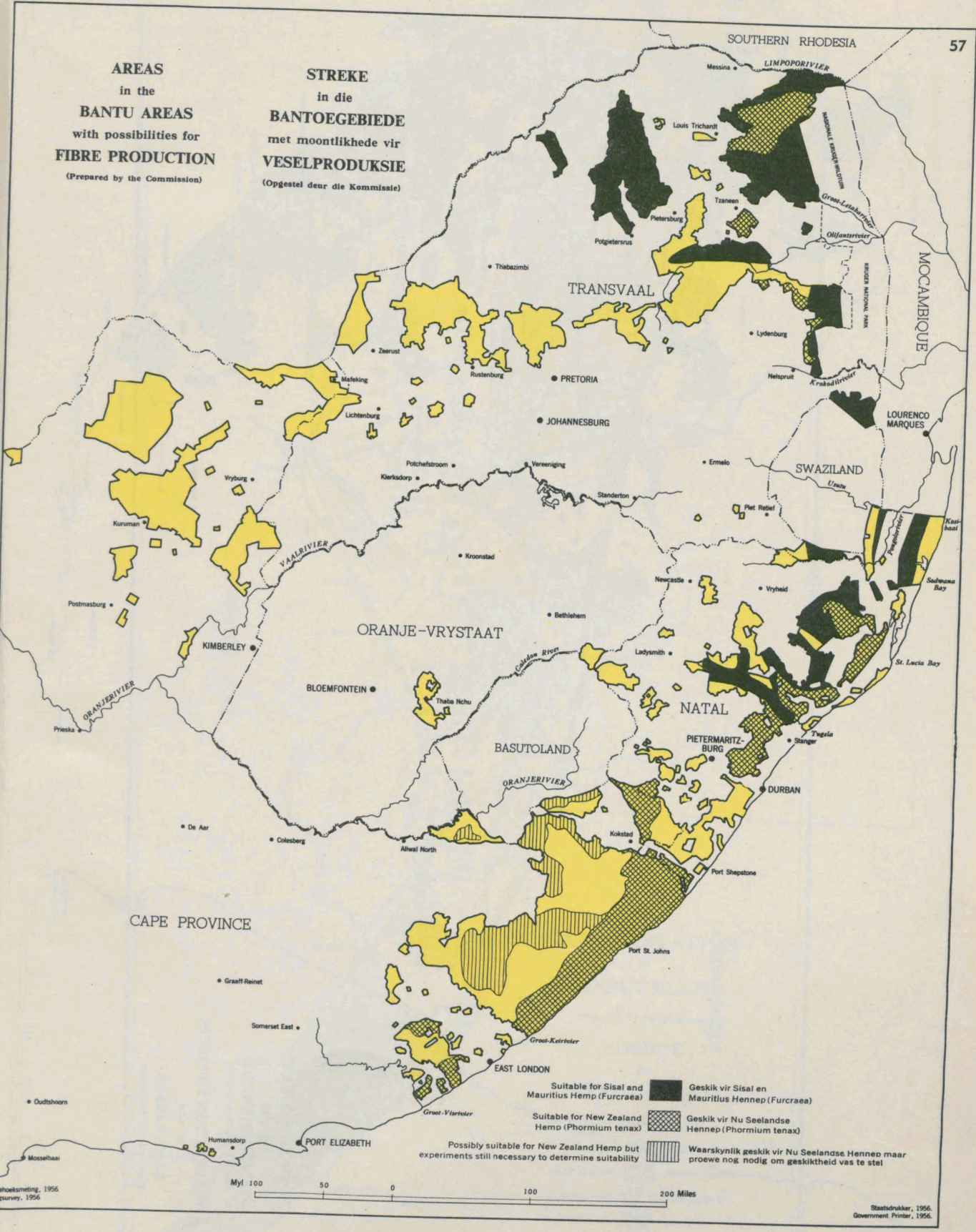
IRRIGATION
 in the
BANTU AREAS
 (Prepared by the Commission)



Driehoeksmeting, 1956.
Trigsurvey, 1956.

AREAS
in the
BANTU AREAS
with possibilities for
FIBRE PRODUCTION
(Prepared by the Commission)

STREKE
in die
BANTOEGEBIEDE
met moontlikhede vir
VESELPRODUKSIE
(Opgestel deur die Kommissie)



Suitable for Sisal and Mauritius Hemp (*Furcraea*)

Suitable for New Zealand Hemp (*Phormium tenax*)

Possibly suitable for New Zealand Hemp but experiments still necessary to determine suitability

Geskik vir Sisal en Mauritius Hennep (*Furcraea*)

Geskik vir Nu Seelandse Hennep (*Phormium tenax*)

Waarskynlik geskik vir Nu Seelandse Hennep maar proewe nog nodig om geskiktheid vas te stel

shoeksmeting, 1956.
survey, 1956.

SUIDWES-AFRIKA

BECHUANALAND

SOUTHERN RHODESIA

TRANSVAAL

ORANJE - VRYSTAAT

BASUTOLAND

CAPE PROVINCE

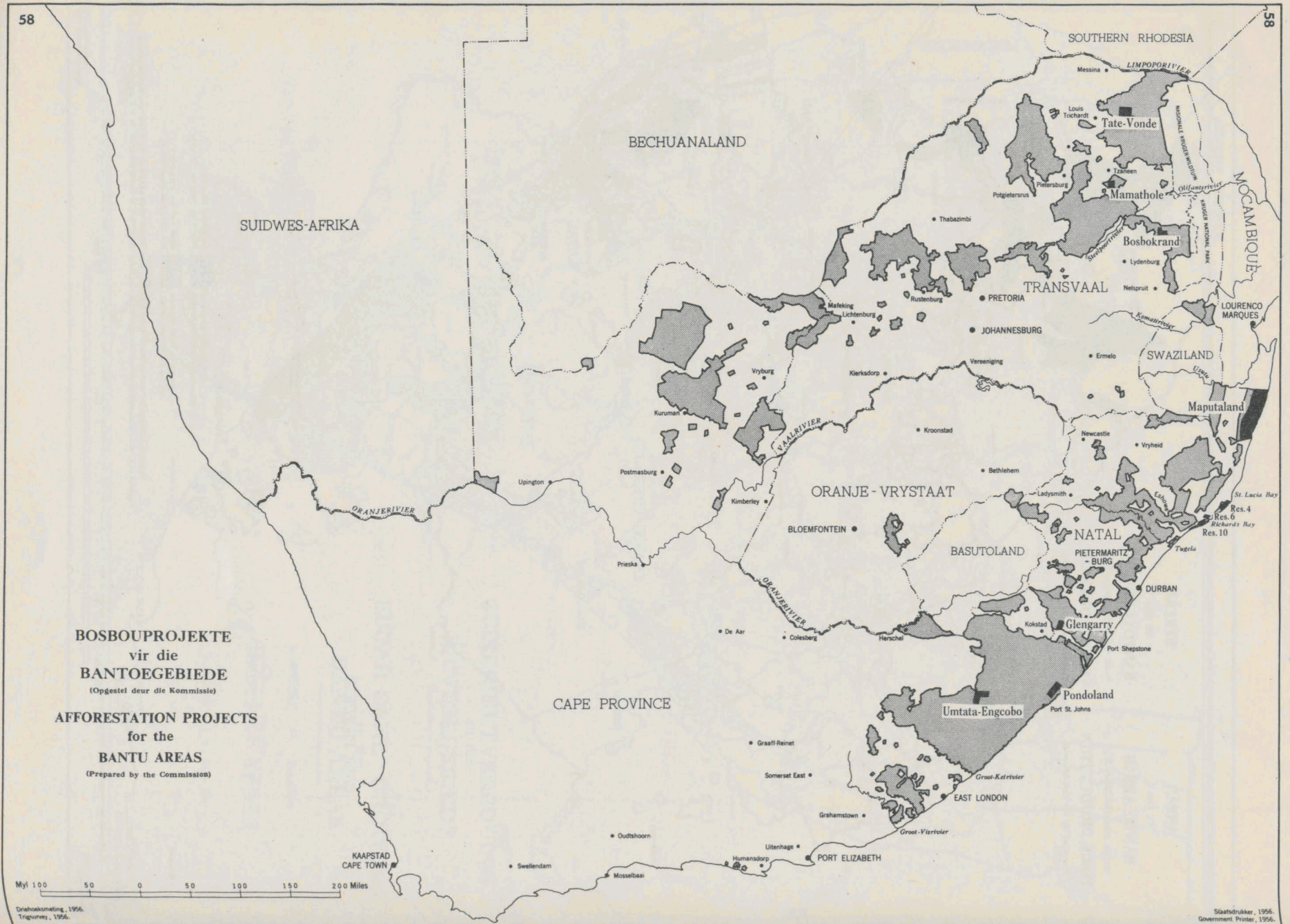
BOSBOUPROEKTE
vir die
BANTOEGEBIEDE
(Opgestel deur die Kommissie)

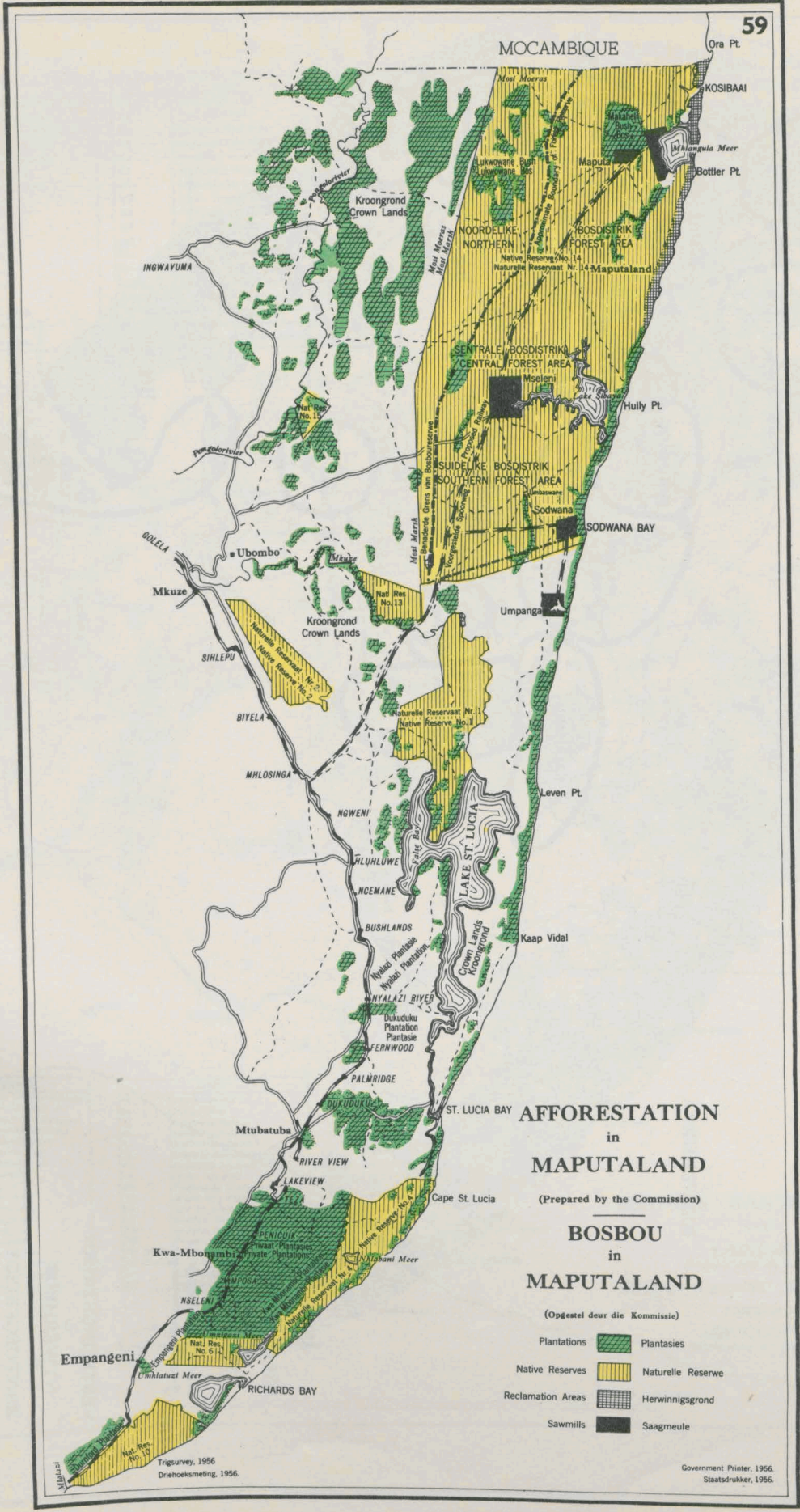
AFFORESTATION PROJECTS
for the
BANTU AREAS
(Prepared by the Commission)

Myl 100 50 0 50 100 150 200 Miles

Draaioekmeting, 1956.
Triangulering, 1956.

Staatsdrukker, 1956.
Government Printer, 1956.





Ora Pt.

KOSIBAAI

Maputla

Bottler Pt.

Hully Pt.

SODWANA BAY

Umpango

Leven Pt.

Kaap Vidal

ST. LUCIA BAY

Cape St. Lucia

AFFORESTATION in MAPUTALAND

(Prepared by the Commission)

BOSBOU in MAPUTALAND

(Opgestel deur die Kommissie)

- Plantations Plantasies
- Native Reserves Naturelle Reserve
- Reclamation Areas Herwinningsgrond
- Sawmills Saagmeule

INGWAYUMA

GOLELA

Mkuzi

SIHLEPU

BIYELA

MHLOSINGA

NGWENI

MHLUWE

NGEMANE

BUSHLANDS

NYALAZI RIVER

PALMWRIDGE

Mtubatuba

RIVER VIEW

LAKEVIEW

Empangeni

Emphahle Meer

Richards Bay

Tigsurvey, 1956
Drietoekasmeting, 1956.

Government Printer, 1956.
Staatsdrukker, 1956.

**AREAS
for the
ESTABLISHMENT
of
INDUSTRIES
in the
BANTU AREAS**
(Prepared by the Commission)

**VESTIGINGSTREKE
vir
NYWERHEDE
in
BANTOEGEBIEDE**
(Opgestel deur die Kommissie)

SUIDWES-AFRIKA

BECHUANALAND

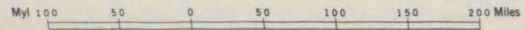
SOUTHERN RHODESIA

NOCAMBIEQUE

SWAZILAND

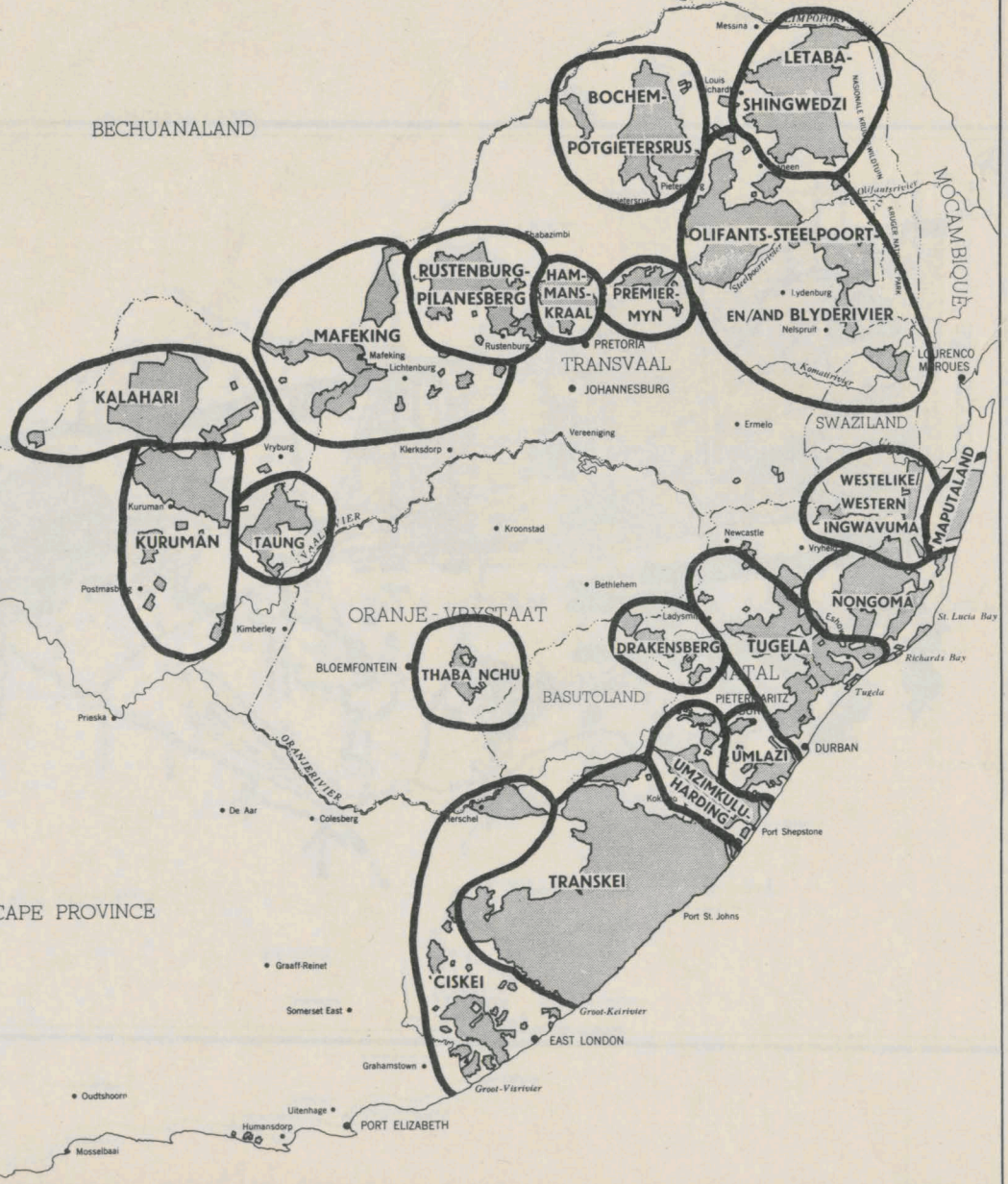
ORANJE - VRYSTAAT

CAPE PROVINCE



Direktoraat, 1956.
T. g. v. v. v. v. v.

Staatsdrukker, 1956.
Government Printer, 1956.



KAAPSTAD
CAPE TOWN

Swellendam

Oudshoorn

Humansdorp

PORT ELIZABETH

Grahamstown

Groot-Vierster

EAST LONDON

CISKEI

Graaff-Reinet

Somerset East

Port St. Johns

TRANSKEI

UNZINKULU

HARDING

UMLAZI

DURBAN

NATAL

TUGELA

NONGOMA

WESTELIKE/
WESTERN
INGWAVUMA

MAPUTLAND

PRETORIA

TRANSVAAL

JOHANNESBURG

PREMIER
MYN

HAM-
MANS-
KRAAL

RUSTENBURG-
PILANESBERG

MAFEKING

KALAHARI

KURUMAN

TAUNG

BLOEMFONTEIN

THABA NCHU

BASUTOLAND

DRAKENSBERG

WESTELIKE/
WESTERN
INGWAVUMA

NONGOMA

WESTELIKE/
WESTERN
INGWAVUMA

WESTELIKE/
WESTERN
INGWAVUMA

WESTELIKE/
WESTERN
INGWAVUMA

WESTELIKE/
WESTERN
INGWAVUMA

WESTELIKE/
WESTERN
INGWAVUMA

WESTELIKE/
WESTERN
INGWAVUMA

WESTELIKE/
WESTERN
INGWAVUMA

WESTELIKE/
WESTERN
INGWAVUMA

WESTELIKE/
WESTERN
INGWAVUMA

WESTELIKE/
WESTERN
INGWAVUMA

WESTELIKE/
WESTERN
INGWAVUMA

WESTELIKE/
WESTERN
INGWAVUMA

WESTELIKE/
WESTERN
INGWAVUMA

WESTELIKE/
WESTERN
INGWAVUMA

WESTELIKE/
WESTERN
INGWAVUMA

WESTELIKE/
WESTERN
INGWAVUMA

WESTELIKE/
WESTERN
INGWAVUMA

WESTELIKE/
WESTERN
INGWAVUMA

WESTELIKE/
WESTERN
INGWAVUMA

WESTELIKE/
WESTERN
INGWAVUMA

WESTELIKE/
WESTERN
INGWAVUMA

WESTELIKE/
WESTERN
INGWAVUMA

WESTELIKE/
WESTERN
INGWAVUMA

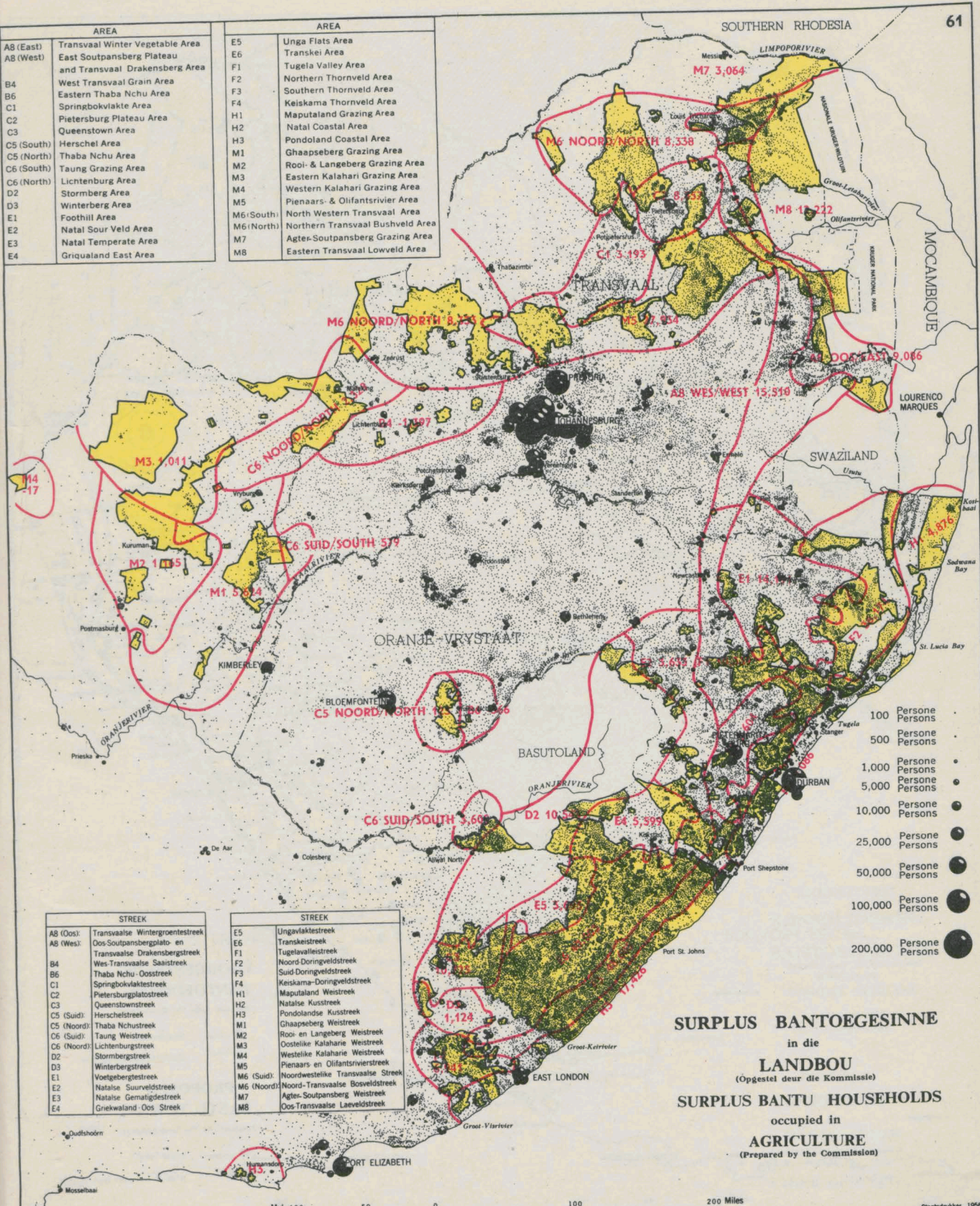
WESTELIKE/
WESTERN
INGWAVUMA

WESTELIKE/
WESTERN
INGWAVUMA

WESTELIKE/
WESTERN
INGWAVUMA

AREA	AREA
A8 (East)	Transvaal Winter Vegetable Area
A8 (West)	East Soutpansberg Plateau and Transvaal Drakensberg Area
B4	West Transvaal Grain Area
B6	Eastern Thaba Nchu Area
C1	Springbokvlakte Area
C2	Pietersburg Plateau Area
C3	Queenstown Area
C5 (South)	Herschel Area
C5 (North)	Thaba Nchu Area
C6 (South)	Taung Grazing Area
C6 (North)	Lichtenburg Area
D2	Stormberg Area
D3	Winterberg Area
E1	Foothill Area
E2	Natal Sour Veld Area
E3	Natal Temperate Area
E4	Griqualand East Area

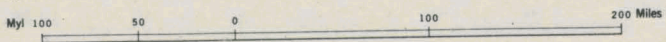
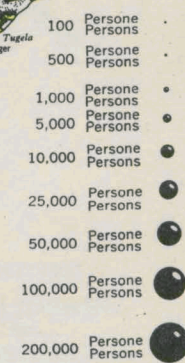
AREA	AREA
E5	Unga Flats Area
E6	Transkei Area
F1	Tugela Valley Area
F2	Northern Thornveld Area
F3	Southern Thornveld Area
F4	Keiskama Thornveld Area
H1	Maputaland Grazing Area
H2	Natal Coastal Area
H3	Pondoland Coastal Area
M1	Ghaapseberg Grazing Area
M2	Rooi- & Langeberg Grazing Area
M3	Eastern Kalahari Grazing Area
M4	Western Kalahari Grazing Area
M5	Pienaars- & Olifantsrivier Area
M6 (South)	North Western Transvaal Area
M6 (North)	Northern Transvaal Bushveld Area
M7	Agter-Soutpansberg Grazing Area
M8	Eastern Transvaal Lowveld Area

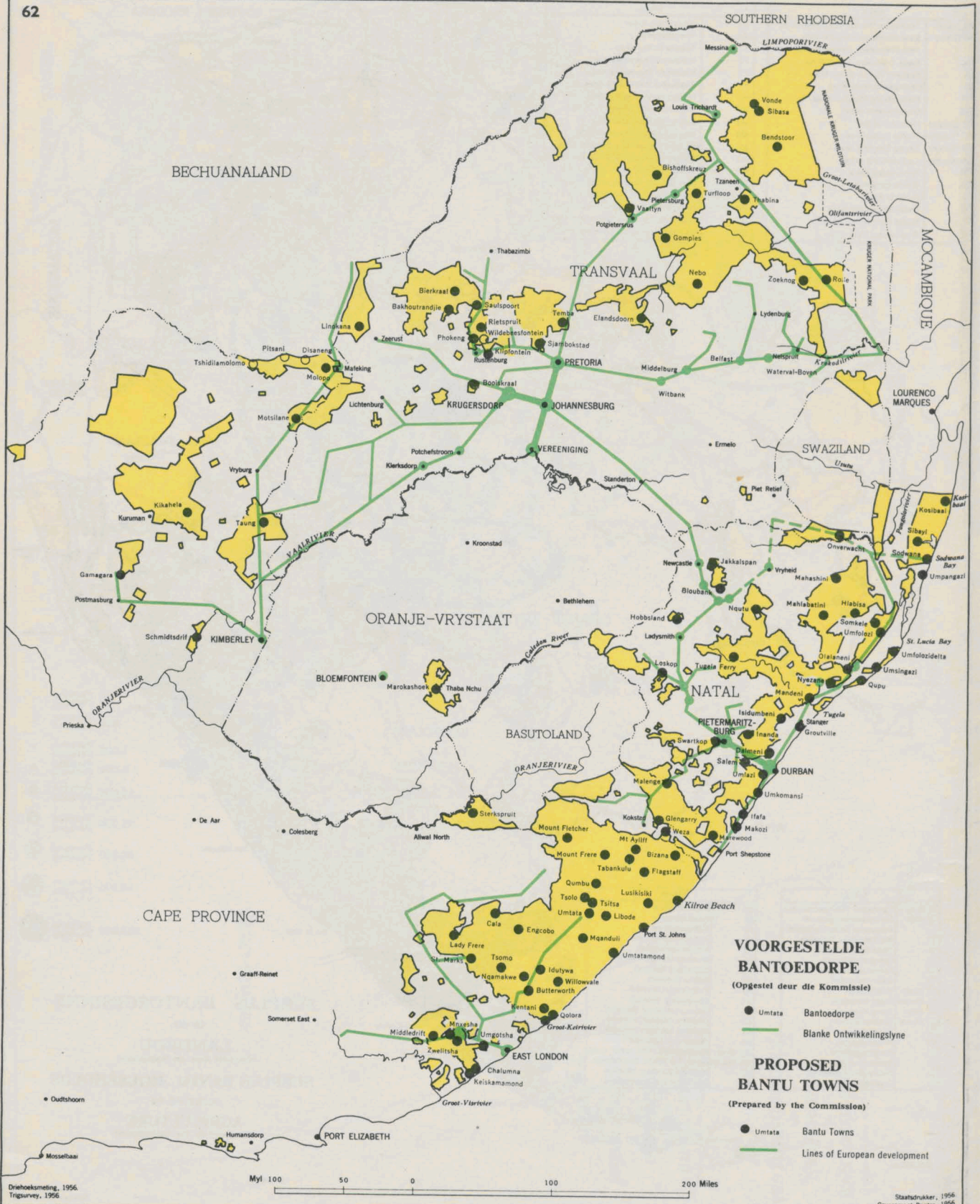


STREEK	STREEK
A8 (Oos)	Transvaalse Wintergroentestreek
A8 (West)	Oos-Soutpansbergplato en Transvaalse Drakensbergstreek
B4	Wes-Transvaalse Saaiestreek
B6	Thaba Nchu-Ooststreek
C1	Springbokvlaktestreek
C2	Pietersburgplaatstreek
C3	Queenstownstreek
C5 (Suid)	Herschelstreek
C5 (Noord)	Thaba Nchustreek
C6 (Suid)	Taung Weststreek
C6 (Noord)	Lichtenburgstreek
D2	Stormbergstreek
D3	Winterbergstreek
E1	Voetgebergtestreek
E2	Natale Suurveldstreek
E3	Natale Gematigdstreek
E4	Griekwaland-Oos Streek

STREEK	STREEK
E5	Ungavaktestreek
E6	Transkeistreek
F1	Tugelavallestreek
F2	Noord-Doringveldstreek
F3	Suid-Doringveldstreek
F4	Keiskama-Doringveldstreek
H1	Maputaland Weistreek
H2	Natale Kusstreek
H3	Pondolandse Kusstreek
M1	Ghaapseberg Weistreek
M2	Rooi- en Langeberg Weistreek
M3	Oostelike Kalahari Weistreek
M4	Weselike Kalahari Weistreek
M5	Pienaars- en Olifantsrivierstreek
M6 (Suid)	Noordwestelike Transvaalse Streek
M6 (Noord)	Noord-Transvaalse Bosveldstreek
M7	Agter-Soutpansberg Weistreek
M8	Oos-Transvaalse Laeveldstreek

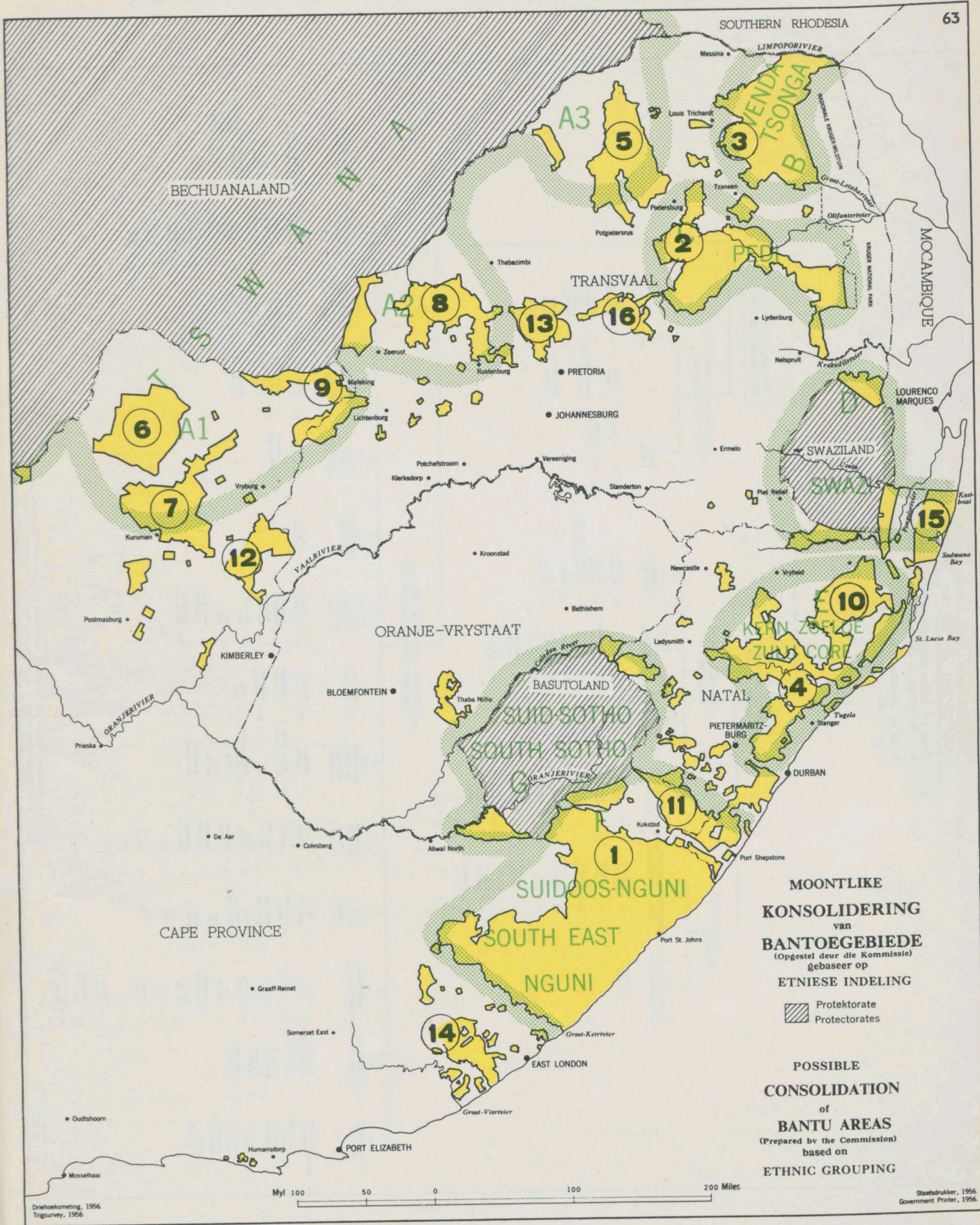
SURPLUS BANTOEGESINNE
 in die
LANDBOU
 (Opgestel deur die Kommissie)
SURPLUS BANTU HOUSEHOLDS
 occupied in
AGRICULTURE
 (Prepared by the Commission)





Driehoeksmeting, 1956. Trigsurvey, 1956

Staatsdrukker, 1956. Government Printer, 1956

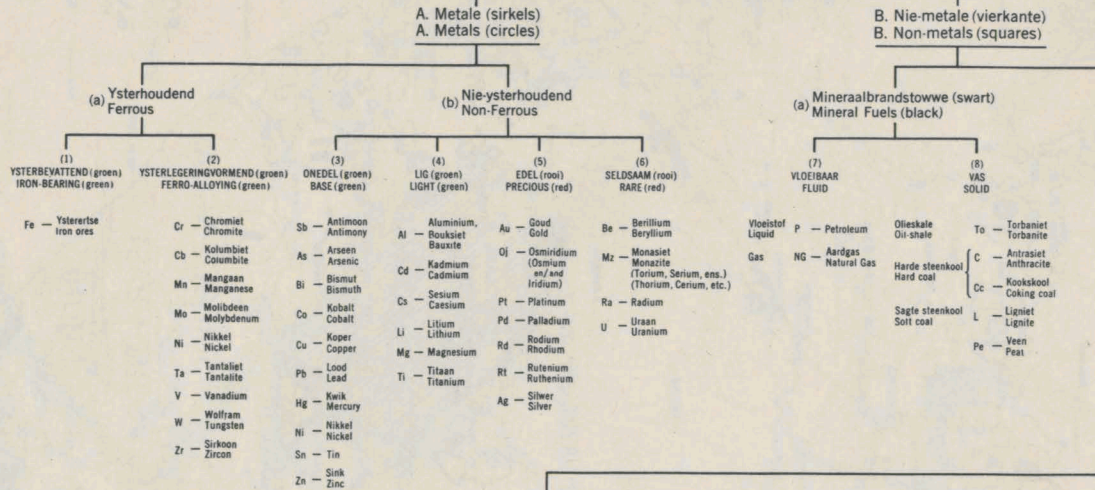


INDELING VAN DELFSTOFHULPBRONNE
CLASSIFICATION OF MINERAL RESOURCES

EN HUL SIMBOLE, VOLGENS CHEMIESE, FISIËSE EN GEBRUIKSEIENSKAPPE
AND THEIR SYMBOLS, ACCORDING TO CHEMICAL, PHYSICAL AND USE CHARACTERISTICS

(Hierdie het betrekking op kaarte 25, 50, 51, 52, en 53.)
(This has reference to maps 25, 50, 51, 52, and 53.)

DELFSTOWWE
MINERALS



(b) Ander Nie-metale (pers vierkante)
Other Non-metals (purple squares)

(9) SKUURMIDDELS ABRASIVES	(10) ABSORBEERMIDDELS ABSORBENTS	(11) BOUWATERIAAL BUILDING MATERIALS	(12) KERAMIESE MATERIAAL CERAMIC MATERIALS	(13) CHEMIESE MATERIAAL CHEMICAL MATERIALS	(14) BEMESTINGS MATERIAAL FERTILISER MATERIALS	(15) VLOEIMIDDELS FLUX MATERIALS	(16) ISOLERINGS- MATERIAAL INSULATING MATERIALS	(17) SMEERMIDDELS LUBRICANTS	(18) OPTIESE MATERIAAL OPTICAL MATERIALS	(19) PIGMENTE EN VULMATERIAAL PIGMENTS AND FILLERS	(20) EDEL EN HALF- EDELGESTENES PRECIOUS AND SEMI- PRECIOUS STONES	(21) VUURVASTE STOWWE REFRACTORIES	(22) MINERAALBRONNE MINERAL SPRINGS
Ad - Andalusiet Andalusite	At - Attapulgiet Attapulgite	Ap - Asfalt Asphalt	Ad - Andalusiet Andalusite	Cr - Chromiet Chromite, chemical	Ls - Kalksteen Limestone	Dm - Dolomiet Dolomite	A, As Ab, Ac - * Asbestos	Gp - Grafiet Graphite	F - Vloeijspaat Fluor-spar	Ba - Bariet Barites	D - Diamante Diamonds	Ad - Andalusiet Andalusite	Cb - Koolswaas Carbon dioxide
D - Industriële Diamante Industrial Diamonds	DI - Diatomiet, Kieselgoer Diatomite, Kieselguhr	DI - Doleriet Dolerite	Fs - Veldspaat Feldspar	Ni - Nitraat, Guano Nitrates, Guano	Pe - Veen Peat	F - Vloeijspaat Fluor-spar	DI - Diatomiet, Kieselgoer Diatomite, Kieselguhr	Is - Ystandspaat Iceland Spar	Oc - Okers, Oksiede, Ombor Ochres, Oxides, Umber	Da - Alluviaal Alluvial	Em - Smarag Emerald	Cr - Chromiet Chromite	He - Helium
(Da - Alluviaal) Diatomiet, Kieselgoer Diatomite, Kieselguhr	Fu - Volleersaarde Fuller's Earth	Gn - Graniet Granite	F - Vloeijspaat Fluor-spar	Pe - Veen Peat	Ls - Kalksteen Limestone	Si - Silika Silica	Mc - Glimmer Mica	Pe - Veen Peat	Tc - Talk, Seepsteen Talc, Steatite	Tg - Tiroerg Tiger's eye	Wc - Vuurvaste Klei Fireclay	Li - Litium Lithium	Su - Swawel Sulphur
DI - Diatomiet, Kieselgoer Diatomite, Kieselguhr	Ls - Kalksteen Limestone	Gs - Gips Gypsum	Wc - Kaolin Wikkei White clay	Pa - Fosfaat, apatiet Phosphate, apatite	K - Potas Potash	Vm - Vermikuliet Vermiculite	Pe - Veen Peat	Vm - Vermikuliet Vermiculite	Tg - Tiroerg Tiger's eye	Ky - Kyaniet Kyanite, Sillimaniet	Su - Swawel Sulphur	Ky - Kyaniet Kyanite, Sillimaniet	Th - Termaal Thermal
Cm - Korund Corundum	Lm - Marmer Marble	Pe - Perliet Perlite	Sa - Sout Salt	Mg - Magnesium Magnesite	Vm - Vermikuliet Vermiculite	Wd - Wondersteen Wonderstone	Wd - Wondersteen Wonderstone	Wd - Wondersteen Wonderstone	Wd - Wondersteen Wonderstone	Ls - Kalksteen Limestone	Mg - Magnesium Magnesite	Sc - Silikreet Silcrete	Si - Silika Silica
	Pe - Perliet Perlite	Ps - Sandsteen Sandstone	Si - Silika Silica	Py - Ysterperiet Iron pyrites	S - Swawel Sulphur								
	SI - Silika Silica	SI - Silika Silica			So - Soda								
	Tv - Travertyn Travertine	Vm - Vermikuliet Vermiculite			Tc - Talk Talc								
	Wd - Wondersteen Wonderstone	Wd - Wondersteen Wonderstone											

Driehoeksmeting, 1956.
Trigsurvey, 1956.

* A - verskeie soorte asbes, bv. antofilliet, tremoliet, ens.; As - amosiet; Ab - krosidoliet; Ac - chrysotiel
* A - various asbestos as antophyllite, tremolite, etc.; As - amosite; Ab - crocidolite; Ac - chrysotile

Collection Number: A1906

Collection Name: Reverend Douglas Chadwick Thompson Papers, 1871-1985

Collection Item: An1 – Summary of the Report of the Commission for the Socio-Economic Development of the Bantu Areas within the Union of South Africa, U.G.61/1955

PUBLISHER:

Publisher: Historical Papers Research Archive, University of the Witwatersrand

Location: Johannesburg

©2015

LEGAL NOTICES:

Copyright Notice: All materials on the Historical Papers website are protected by South African copyright law and may not be reproduced, distributed, transmitted, displayed, or otherwise published in any format, without the prior written permission of the copyright owner.

Disclaimer and Terms of Use: Provided that you maintain all copyright and other notices contained therein, you may download material (one machine readable copy and one print copy per page) for your personal and/or educational non-commercial use only.

People using these records relating to the archives of Historical Papers, The Library, University of the Witwatersrand, Johannesburg, are reminded that such records sometimes contain material which is uncorroborated, inaccurate, distorted or untrue. While these digital records are true facsimiles of paper documents and the information contained herein is obtained from sources believed to be accurate and reliable, Historical Papers, University of the Witwatersrand has not independently verified their content. Consequently, the University is not responsible for any errors or omissions and excludes any and all liability for any errors in or omissions from the information on the website or any related information on third party websites accessible from this website.

This document forms part of the Reverend Douglas Chadwick Thompson Papers, held at the Historical Papers Research Archive, University of the Witwatersrand, Johannesburg, South Africa.