

attending the Gaga Clinic. They receive instruction in the care and feeding of babies and in this way it is hoped future teachers may see what can be done to help the mothers and babies.

“Gala Day” was not held this year as it was felt the money usually spent could be used to better advantage.

During the months February to December 150 school children received one half pint of milk daily at a total cost of £61 15s. 6d. Most of the children supplied with milk live some distance from the school and leave home in the morning without having anything to eat. Records of weights are kept. This year through the generosity of one or two friends, we have been able to increase by two gallons per day the amount of milk given, but we wish it were possible to give more.

The District Nurse continues to do excellent work. From several different sources we have evidence of what great value her work is to the people. She pays weekly visits to the villages of Ntselamanzi, Dyamala, Gqumahashe and Gaga and from April to November she saw on an average 600 cases each month. Her policy is to help where she is able with advice, dressings, etc. and if the cases are bad to advise them to come to the Hospital. She has attended confinements and has instructed mothers in the care and feeding of their babies. Her work is often carried out under great difficulties.

No charges are made for her services. The Committee would like here to express its grateful thanks to the Union Health Department, the Ciskeian General Council and the Local Council for their help towards the support of the nurse. At present the Union Health Department, the Ciskeian Council and our Committee each pay one-third towards the nurse's salary.

In November, we parted with regret with Nurse Henrietta Ngcetane who had rendered such excellent service as District Nurse from April, 1939. Nurse Ngcetane came to us from Sulenkama and very soon gained the trust and love of the people. Her place has been taken by Nurse Evelyn Kopo, a nurse also trained in our own Hospital.

£101 15s. 0d. has been received from the Cape Silver

Jubilee Fund towards the dependents of Tubercular patients in the Victoria Hospital. This help has been very much appreciated and in some cases has stood between the people and starvation. The Committee thanks the Jubilee Fund Council for its generous help.

We are most grateful to all those who by their donations have made it possible for us to carry on the work.

CUTHBERT MEMORIAL LIBRARY

Hon. Librarian : Mr. E. N. Brown, B.Sc. (on Military Leave).

Acting Hon. Librarian : Mr. A. J. Raymer.

Asst. Librarian : Mr. R. Senyama.

The position of Hon. Librarian was left vacant by the departure of Mr. E. N. Brown on active service in the last quarter of the year, and in his place Mr. A. J. Raymer was appointed.

The value of the Library to the student community has been appreciated, both through formal class use and private borrowing. The figures of books borrowed from the Student section this year show an increase of well over 1000 on 1939, and 866 above the previous record. While the general section shows a slight decrease in this respect, the demand for non-fiction has risen, perhaps a reflection of world events. Certain papers have unfortunately found it necessary to suspend the issue of complimentary copies for the present, but we are still well supplied with contemporary overseas and South African periodicals.

Student Section.

The treatment of books has not been wholly satisfactory, and during the year some unnecessary and irresponsible marking and defacing of books was noticed. We hope that more students will come to appreciate the responsibilities of Library membership (which are not limited to paying the small sessional charge) and to respond by a careful use of the books borrowed. After action had been taken, a marked improvement was noted towards the end of the year.

The 1940 figures of books read were 5362. This was a record total, exceeding last year by 1121, and improving on the previous 1938 record by 866. Among totals for the current year, the High School accounted for 2634 books, the Training School for 1735, and the Industrial section for 907. One Industrial student has seventy-three books entered against his name.

Among additions for the year were 205 English books, forty-seven Xhosa, and four Sesotho. The growing interest in current affairs was partly met by the inclusion of Oxford Pamphlets on World Affairs as issued, and paper-backs dealing with outstanding persons and problems. These are not included in the 256 already recorded. The recently purchased Encyclopedia Britannica is being supplemented by the annual addition of a year book bringing it up to date.

General Section.

While the figures show a decrease of thirty-six on last year, to 975, the proportion of fiction to non-fiction reveals an interesting shift of gravity centre. Last year the ratios were 77% to 23% respectively; in 1940 they were approximately 67% fiction as against 33% non-fiction. Purchases of fiction and non-fiction together totalled sixty-one. In addition the experiment was tried of adding twenty-five new Penguins and Pelicans, representing fiction, history, psychology, and current affairs. Stiff covers have been purchased to protect them when on loan.

The cash in hand at present amounts to £5 9s. 6d., after the payment of practically all books bought in the current year. This represents a fairly sound position. We hope to build up a small surplus for the purchase of standard literature, including modern, not yet fairly represented in the Library.

Throughout the year Mr. Senyama has rendered to the Library a willing and conscientious service that has contributed greatly to its smooth and efficient running, for which we are grateful to him.

LOVEDALE FORMER STUDENTS' ASSOCIATION

Hon. Secretary : Miss M. Shingler.

It was not possible to hold the Annual Reunion this year, but the Annual General Meeting was held at Lovedale on 9th October, 1940. This was attended by Lovedale and Fort Hare members.

The Treasurer submitted a satisfactory balance. In the annual report, it was noted with regret that membership is still very small, there being sixty-nine Life members and twenty-two annual members.

Suggestions in connection with the forthcoming Centenary Celebrations were remitted to the Committee for transmission to the Executive Committee who are making plans for the Celebrations. It was recorded that the history of Lovedale had been published and congratulations were offered to the Author and Publishers on this achievement.

With the near approach to the Centenary, it is hoped that there will be a good response to the Lovedale Appeal.

In future, a quarterly letter, giving items of interest concerning Lovedale and former students will be sent to all members of the Association. This we hope will strengthen the bond between past and present Lovedale.

The Victoria Hospital.

Medical Superintendent : Dr. A. F. G. Guinness.

MACVICAR TUBERCULOSIS HOSPITAL

The greatest development during 1940 has been the opening of the Macvicar Tuberculosis Hospital. In the report for 1939 it was stated that the building would be completed and ready for occupation by July, 1940. Thanks to the energy and promptitude of the heads of the Lovedale Building Department, this promise was redeemed and on July 1st thirty-one patients were transferred to the new Hospital.

The official ceremony took place on July 19th when the Hon. H. G. Lawrence, Minister of Health, was present and pronounced the Hospital open for the advancement of health among the Native people. In his speech, Mr. Lawrence spoke stirring words which must have gladdened the heart of Dr. Neil Macvicar and which gave great encouragement to those responsible for the administration of the Hospital. The battle against disease, he said, must continue in spite of the war, and Public Health knew no colour bar.

The Macvicar Hospital has rapidly filled up and in a short time there will be a waiting list for admission.

PREVALENCE OF TUBERCULOSIS IN THE CISKEI.

We have always been greatly concerned at the prevalence of Pulmonary Tuberculosis in this area, but during the past few months increasing numbers of patients have presented themselves at the Out-patient Department seeking admission to Hospital. We could fill the Hospital to overflowing with patients from a radius of less than fifteen miles. Many of these cases are in the advanced or

chronic stages of the disease and are quite unsuitable for admission to Hospital, and yet if we refuse them admission they are spreading the infection broadcast among their families and neighbours. Many cases have come to our notice of whole families becoming infected and dying out.

There is urgent need for some provision to be made by the Public Health Department for the isolation of these patients. The cost of providing Hospital accommodation for them is prohibitive, but other schemes, such as the establishment of farm colonies, are well within the means of the nation. Without a country-wide effort to combat Tuberculosis, the provision of Hospital accommodation will be merely palliative in effect and will do little to rid the country of this terrible scourge.

THE WORK OF THE VICTORIA HOSPITAL.

In spite of a serious shortage of European Sisters due to the war, all the various activities of the Hospital have been continued and some have even been extended.

DISTRICT WORK.

In particular the Clinic work has increased greatly. We have moved to new locations adjacent to the old sites, but serving a far wider area, and the attendances have grown to such an extent that afternoon sessions are no longer sufficient; so the ambulance with Doctor and Assistants, drugs and dressings, starts in the morning. Towards sunset the party returns, their boxes of supplies empty, but usually bringing with them two or three children for admission to Hospital.

We gratefully acknowledge the co-operation of the Chief Native Commissioner for the Ciskei, who has made available a supply of milk for sick children attending these Clinics. At Ngwenya, thirty children are receiving milk daily, and milk is supplied to the Kwezana clinic from the Government farm in the Tyumie Valley. The local school teachers who are showing great interest in our clinics, gladly undertake the daily distribution of this milk.

MEDICAL AIDS.

These clinics not only enable us to get into touch with the people in their own locations, and to bring to light much hidden disease, but also act as a valuable training ground for the Medical Aids who receive two years of their clinical training at the Victoria Hospital. The training of these African men and women has added greatly to the work of the Medical Staff of the Hospital.

In 1938, there were four Senior and four Junior students. In 1940, the numbers had increased to eight Seniors and thirteen Juniors. So far all the Seniors have been successful in their Final Examination, and sixteen have proceeded to the McCord Hospital at Durban for their final year's training.

THE MATERNITY TRAINING SCHOOL.

This Department, which was started in July, 1939, has made a very successful beginning. So far three Pupil Midwives have sat for their Final Examination and all have been successful. The District Maternity Work and the ante-natal clinics are also developing satisfactorily.

CHILDREN'S WARD.

As a result of reorganization, following the transfer of cases of Pulmonary Tuberculosis to the Macvicar Hospital, it was found possible to set aside one ward for the exclusive use of children. This has brought to an end the overcrowding of children in cramped surroundings, and has added to the comfort of the "Medical Women" by moving them away from noisy surroundings to a more spacious ward. It does mean however, that Medical and Surgical men must be accommodated in the same ward and we are often hard pressed for room as the beds vacated by pulmonary cases have been filled by adult cases of Spinal Tuberculosis.

SPINAL TUBERCULOSIS.

These cases are increasing yearly and are causing an added strain, not only on our accommodation, but on our

finances as well. Their treatment extends over many months, even years, and a man totally incapacitated from work cannot pay even the smallest fee. Although these cases are caused by infection from pulmonary disease, they are not themselves infectious and consequently are not the responsibility of the Public Health Department. The "Spines" Wards contain over seventy children suffering from bone or spinal tuberculosis, and each of these children costs the Hospital approximately £50 per annum.

HOSPITAL BUILDING.

For years past no money has been available for major repairs to the main Hospital building and, in spite of warnings from the architect that the matter was urgent, nothing could be done.

This year the whole of the brick work has been repaired and plastered, chimneys have been rebuilt and the roof repaired and painted. The main building is now structurally sound and greatly improved in appearance but many internal repairs are still necessary and will be done as money becomes available.

STAFF.

The greatly increased work of the Hospital has necessitated the creation of new appointments.

Miss Latham came out from England in July, 1940 to fill the position of Assistant Matron, and on August 1st, 1940, Miss A. Evans was appointed our first Sister Tutor. This appointment was much overdue and will greatly increase the efficiency of our teaching.

THE MISSIONARY SIDE OF THE WORK.

With all the multiple activities of the Hospital, the spiritual welfare of the patients has not been neglected. The medical staff conduct prayers daily in the Wards and short services each Sunday. Every evening the Native Nurses conduct short devotions for the patients who delight in joining in hymns and prayer. We are grateful

too for the help given by the Lovedale Bible School. Under the direction of the Rev. J. J. Jolobe, Evangelists visit the Hospital regularly and give spiritual help to individual patients. The results of this work cannot be tabulated in the statistical report, but one noteworthy result of the many years of endeavour at the Hospital is that the witch-doctor is becoming more and more discredited in the Ciskei, and the Bantu are becoming ready and eager to enter Hospital for treatment.

FINANCE.

The great developments of recent years have necessarily added to our financial burdens. We can no longer expect assistance from overseas; although, in spite of enormous taxation and the requirements of war charities, one generous donor in Scotland is sending us £230 every year.

Lovedale is situated in the midst of a poverty stricken Native area and, on account of the drought, hardly any ploughing has been done and the mealie crops are dying. The Natives are facing starvation in 1941 and with starvation comes an enormous increase in the amount of help the Hospital must give. Our need, too, will be urgent in 1941. Every £1 donated to the Hospital earns a subsidy of 30s. from the Provincial Administration. Please help us generously.

The Lovedale Bible School.

Head : Rev. E. W. Grant.

Tutor : Rev. J. J. R. Jolobe, B.A.

The record of the year's work reveals the breadth of interest of the service the Bible School is rendering to the African Church.

Available accommodation was almost completely taken up when twenty-three men attended the *Training Course in Evangelism* which occupied the first half of the year. The task of teaching a group whose members are of many grades of general education, speaking several languages, with ages ranging from twenty-one to more than fifty years, and with a variety of Church connections, is no light one. But experience has helped to solve difficulties, and the keenness and fine brotherly spirit of each successive group brings out the best in every man. We now receive each year a proportion of Coloured, as distinct from Native, students. In addition to intensive work in the classroom the Course was marked by initiative and enterprise in the practical evangelistic and Sunday-school work which touched the lives of old and young in many villages. Students have been given experience in co-operating with medical services in country centres and in hospital visitation. Regular lectures on First Aid, provided through the kindness of a visiting doctor, have further increased their usefulness to the community.

At the annual Retreat of the *African Ministers' Fellowship* consideration was given for more than a week to questions relating to Youth and the Church. Discussions were led with great ability by three younger ministers. At the end of the year the members of the *African Women's Fellowship* met in a similar way. In addition to lectures on the Religion of Children and related subjects, demonstrations and lectures on Home-making, Child Welfare and Home Nursing, provided by generous helpers, created tremendous interest. The work of these Retreats is followed up through the year by the issue of quarterly circulars

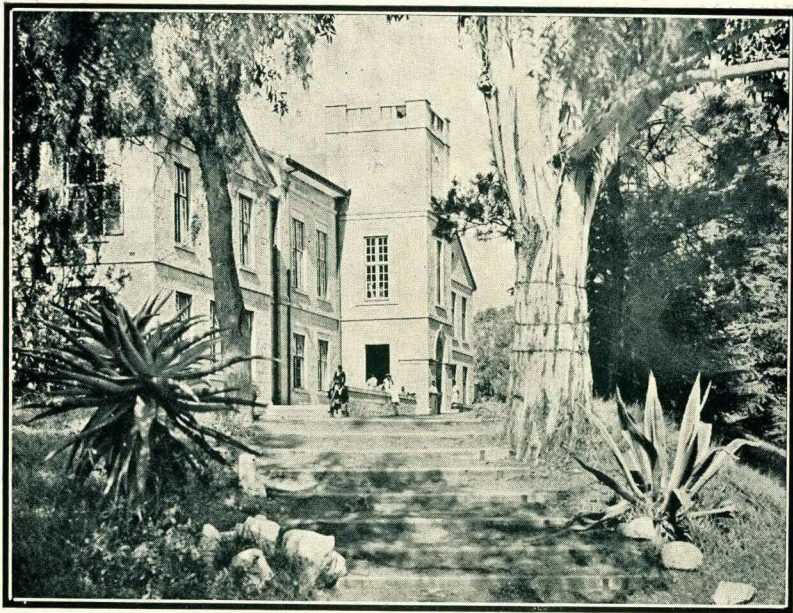
to members, among whom are key men and women in many parts of the country.

This year a new venture met with real success. It was a long weekend with *African theological students* from Fort Hare, representative of several Churches, one of the wardens co-operating. Days of study, fellowship and prayer together, of facing up to the demands which such a time as this makes upon ministers of the Gospel, left a deep impression upon a group of young men contemplating their life's work. In all these Retreats there has been a deeply devotional spirit.

During the winter months *Field Work* led the two members of the teaching staff into many places, including distant mission stations in the Transkei, Ciskei and Basutoland. In these centres some hundreds of preachers, evangelists and Sunday-school workers gathered in a number of Training Courses, each of four to six days duration. Christian literature was circulated. Shorter visits have been paid to nearer centres, and other groups of Christian workers, previously entirely untrained, have been helped to equip themselves more fully.

On the literary side of its work the School continues to extend its influence. Its monthly publication, *The Preacher's Help*, is now printed at Lovedale in seven languages, and reaches more than three thousand persons each month. In addition, an Afrikaans translation made by the Congregational Church circulates to over a thousand Coloured preachers. English copies are sent to missions of many Churches in all parts of Africa, where the little paper often forms the basis of further translations. Perhaps the most remote recipient is a Danish missionary in Aden. Copies enter the war zone in Kenya and the Sudan. Others go to Uganda, Tanganyika, the Gold Coast, Angola, the Congo, Nyasaland, and other areas.

A third volume, a Bible Dictionary in Xhosa, is being planned for the Bible School series, *Isikokelo Sabashumayeli* (the Preacher's Guide). More than fifteen hundred copies of previous volumes have been sold. A book in English for the use of African teachers and others giving religious instruction is now complete in manuscript, and will be published shortly.



MAIN EDUCATIONAL BUILDING.

We have many correspondents in all parts of Africa. The need for equipping African Christians to evangelise their own people is being increasingly realised, and it is a privilege to be of service to men and women of many Churches who are seeking to meet that need.

The Lovedale Congregation.

The work of the congregation in its Sunday services, weekly staff prayer meeting, Bible classes, scripture teaching in the schools and in the related activities of the Students Christian Association, seemed to be prosecuted during 1940 with more than customary vigour and earnestness. The staff could not fail to remember that we were living in the midst of world-shaking events, while many of the senior students and apprentices were vividly conscious that the future of Africa was being decided, particularly through the battle for Britain. The educated Bantu have not failed to give publicity to the fact that Herr Hitler has declared in *Mein Kampf*: "One hears from time to time that a Black man has become a lawyer, teacher or the like. That is a sin against all reason. It is criminal lunacy to train such people to become lawyers. It is a sin against the eternal Creator to train Black men to intellectual professions." The effect left on the minds of such as students of Lovedale by a statement of this kind need not be described.

The Young Communicants class was the largest in the history of the Institution. The number attending was 104. At a service held on October 11th, ninety-five of these were admitted to church membership, eight of them being baptised. For special reasons, four others were recommended for admission by their home congregations.

A feature of the congregation's life during the year was the staging of a Nativity Play which was performed on the evenings of 6th and 8th November. It was beautifully produced and very reverently presented. The performers were students and apprentices from the various schools and departments. They entered fully into the spirit of the play as did also the audiences. Thanks to busy hands, some sixty dresses, of true Palestinian type, were prepared. The climax of each performance came when at the close representatives of many nations and representatives of various departments in Fort Hare and Lovedale came bowing before the Crib with its sacred Infant. It is hoped to have a similar performance annually.

Staff and Statistics.

LOVEDALE GOVERNING COUNCIL, 1940

Chairman : Rev. Arthur W. Wilkie, C.B.E., D.D.
Vice-Chairman : Senator The Hon. W. T. Welsh.
Secretary : Rev. R. H. W. Shepherd, M.A.

Members ex-officio.

Rev. Arthur W. Wilkie, C.B.E., D.D.	Principal.
Mr. C. A. Pilson, B.Sc.	Head of High School.
Mr. J. W. Macquarrie, B.A.	Head of Training School. (Military Leave 18th. Sept.)
Mr. W. J. Barker, B.A.	Acting-Head of Training School.
Mr. V. L. Nixon	Head of Practising School.
Miss A. M. Wood	Head of Domestic Science Dept.
Rev. R. H. W. Shepherd, M.A.	Minister of Congregation.
Miss M. E. Moore-Anderson	Superintendent, Girls' School.
Miss R. I. Stuart	Vice-Supt., Girls' School.
Dr. A. F. Grattan Guinness, L.R.C.P., M.R.C.S.	Medical Supt., Victoria Hospital.
Major W. L. Geddes, O.B.E.	Boarding Master.
Mr. W. A. Smith	Representing Industrial Depts.
Mr. G. McGillivray	Head of General Office.
Rev. E. W. Grant	Head of Bible School.

Elected by Governing Council (2 years).

Mr. C. D. Zulu	1939, 1940.
Mr. T. Atkinson	1940, 1941.

Appointed by Mission Council (5 years).

Rev. R. Godfrey, M.A.	King William's Town.
Rev. J. Lennox, O.B.E., D.D.	Johannesburg.
Rev. D. W. Semple, M.A.	Cunningham.

Secundi :

Rev. W. Arnott, M.A.	Blythwood.
Rev. M. Carrick, B.D.	Iona House.
Dr. R. L. Paterson.	Sulenkama.

Appointed by Bantu Presbyterian Church (5 years).

Rev. Y. Mbali	Gillespie.
Rev. F. W. Ngxenge	Kentani

Appointed by Governor-General-in-Council (5 years).

Mr. A. L. Barrett	Chief Native Commissioner, Ciskei,
Mr. R. Fyfe King	Chief Magistrate, Transkei,

**Appointed by Superintendent-General of Education, C.P.
(5 years.)**

G. H. Welsh, B.A.	Chief Inspector of Native Education, C.P.
Mr. K. A. Hobart Houghton, M.A.	Circuit Inspector, Victoria East.

Nominated by Executive (5 years).

Mr. W. G. Bennie, B.A., LL.D.	Late Chief Inspector, Native Education, C.P.
Sister Frances Mary, C.R., M.A.	Head, Grahamstown Training College.
Dr. A. Kerr, M.A., LL.D.	Principal, S.A. Native College.
Mr. F. A. W. Lucas, K.C.	Johannesburg.
Mr. W. Webber	Johannesburg.
Senator W. T. Welsh	East London.

Appointed by Executive, representing Past Students (5 years).

Dr. R. T. Bokwe, M.B., Ch.B.	Middledrift.
Mr. R. V. Selope-Thema	Johannesburg.

Honorary Associate Members.

Mr. D. A. Hunter, F.R.S.G.S.	Lovedale.
Dr. N. Macvicar, M.D.	Johannesburg.

Note. The term of office for all members appointed for 5 years expires December 1941.

THE SENATE 1940.

Members ex-officio.

Rev. A. W. Wilkie, C.B.E., D.D.	Principal, and Chairman.
Mr. C. A. Pilson, B.Sc.	Head of High School.
Mr. J. W. Macquarrie, B.A.	Head of Training School. (on Military Leave 18th Sept.)
Mr. J. W. Barker, B.A.	Ac. Head of Training School.
Mr. V. L. Nixon	Head of Practising School.
Miss A. M. Wood	Head of Domestic Science Dept.
Miss M. E. Moore-Anderson	Superintendent Girls' School.
Miss R. I. Stuart	Vice-Supt., Girls School.
Rev. R. H. W. Shepherd, M.A.	Minister of Congregation.
Major W. L. Geddes, O.B.E.	Boarding Master.

Elected by Heads of Industrial Departments.

Mr. T. Atkinson	Printing Department.
Mr. W. A. Smith	Building Department.

Elected by Heads of Departments, Teachers & Instructors.

Mr. J. P. Benyon, B.A.	High School (on Military Leave 18th Sept.)
Mr. E. N. Brown, B.A.	" " " "
Mr. P. Gilowey, B.Sc.	High School
Mr. B. B. Mdledle, B.A.	Training School
Mr. G. McGillivray	General Office
Mr. I. Oldjohn, B.A.	High School
Mr. S. Rajuili, B.A.	Training School
Mr. C. D. Zulu	General Office

Secretary :

Mr. E. N. Brown, B.Sc.	(on Military Leave 18th Sept.)
Mr. P. Gilowey, B.Sc.	Acting-Secretary.

STAFF 1940.

<i>Principal :</i>	Rev. Arthur W. Wilkie, C.B.E., D.D.
<i>Minister of Congregation :</i>	Rev. R. H. W. Shepherd, M.A.
<i>Boarding Master :</i>	Major W. L. Geddes, O.B.E.
<i>Boarding Mistress :</i>	Mrs. Geddes
<i>Superintendent, Girls' School :</i>	Miss M. E. Moore-Anderson
<i>Vice-Superint. Girls' School :</i>	Miss R. I. Stuart.

HIGH SCHOOL.

<i>Principal :</i>	Mr. C. A. Pilson, B.Sc.
Mr. J. Benyon, B.A. (Military Service)	Mr. M. X. Ngumbela, B.Sc. (part time)
Mr. E. N. Brown, B.Sc. (Military Service).	Mr. I. Oldjohn, B.A.
†Rev. E. E. Field, B.A.	Mr. A. J. Raymer, B.A.
Mr. P. Gilowey, B.Sc.	Mr. Q. A. Whyte, M.A.
Mr. A. A. Matlhare, B.A.	Miss F. E. Hewitt, B.Sc.
Mr. E. H. McAllister, A.I.A.C., N.C.T.	Miss R. E. Hurcombe, B.Sc.
*Mr. H. Nabe, B.A.	†Mrs. Q. Whyte, M.A.

TRAINING SCHOOL.

<i>Principal :</i>	Mr. J. W. Macquarrie, B.A. (Military Service).
<i>Act.-Principal :</i>	†Mr. W. J. Barker, B.A.
Mr. J. Arosi,	Miss C. Burgess
Mr. D. Coghill, M.A.	Miss J. A. Clarke, B.Sc.
Mr. K. M. Guzana, B.A.	†Miss S. M. Gordon, B.A.
*Mr. N. P. Hela	Miss R. M. Howard, M.A. (Mrs. R. White).
Mr. B. Mdledle, B.A.	Miss L. M. Moore
Mr. J. A. Melvill	*Miss H. M. Parker
*Mr. S. S. Rajuili, B.A.	Miss R. V. Pauw, B.A.
Mr. H. S. Winter, B.A. (Military Service)	Miss C. Roberts, B.A.

*Resigned.

†Temporary.

PRACTISING SCHOOL.

Principal : Mr. V. L. Nixon

Mr. S. Bazi	Mrs. G. Goduka
Mr. E. Moahloli	*Miss C. Makubalo
†Mr. O. O. Mvinjelwa	Miss R. Matakane
Mr. J. J. Nyoka	Miss S. Nikani
†Mr. M. M. Yako	Miss L. Njikelana
Miss M. M. Bam	†Miss Z. Zondani
Miss M. L. Chaga	

ONE-TEACHER SCHOOL.

*Miss E. Boo

Miss S. Moss

GIRLS' DOMESTIC SCIENCE.

Principal : Miss A. M. Wood

Miss E. J. Dlulane	Miss J. Mda
Miss J. Dugmore	†Mrs. E. Mjamba
Miss E. Dyasi	†Mrs. Rousseau
(died 22 Aug).	Miss R. I. Stuart

BOYS' INDUSTRIAL DEPARTMENTS

Carpentry & Waggonmaking :

<i>Head of Department :</i>	Mr. W. W. Duncan
<i>Assistant Instructor :</i>	Mr. T. Sopotela
<i>Journeymen :</i>	Mr. L. Lindstrom (Military Leave).
	Mr. S. Mabeqa
	Mr. B. Ntuli
	Mr. A. Sihawu

Building :

<i>Head of Department :</i>	Mr. W. A. Smith
<i>Journeymen :</i>	Mr. P. Dreyer
	Mr. J. Pollock (Military Leave)

Printing (see "Press")

*Resigned.

†Temporary.

AUDITOR.

Mr. J. W. Williamson, C.A., Grahamstown.

THE BIBLE SCHOOL.

Head of School :

Rev. E. W. Grant.

Tutor :

Rev. J. J. R. Jolobe, B.A.

DISTRICT NURSE.

*Miss H. Ngcetane

Miss E. Kopo

VICTORIA HOSPITAL.

(See page 65).

STAFF CHANGES : 1940.

(1) Appointments at beginning of year.

Mrs. Quinton A. Whyte, M.A.	High School	
Mrs. Quinton A. Whyte, M.A.	" "	(temp. to 31 Mar.)
Mr. K. M. Guzana, B.A.	Training School	
Mr. H. S. Winter, B.A.	" "	
Mr. O. Mvinjelwa	Practising School	(temp. to 31 Mar.)
Miss E. J. N. Dlulane	Domestic Science	
Miss A. M. Wood	" "	

(2) Appointments during year.

Miss R. E. Hurcombe, B.Sc.	High School	13 May
Mr. A. J. Raymer, B.A.	" "	1 April
Mr. J. T. Arosi	Training School	17 July
Miss J. A. Clarke, B.Sc.	" "	1 October
Miss C. Roberts, B.A.	" "	1 April
Miss S. Moss	One-Teacher Sch.	17 July
Mrs. E. Mosese	Girls' Board. Dep.	17 July
Mr. A. Kidwell	Colporteur	1 August
Miss E. Kopo	District Nurse	2 December

(3) Hospital Appointments during year.

Mr. J. F. Barnard	Laundry Engineer	1 August
Miss S. A. Evans, R.N., C.M.	Sister	26 June
Miss E. Haygarth, R.N., C.M.	"	26 June
Miss P. Kinsley	Clerk	18 April
Mrs. A. Kirsten	Housekeeper	23 August
Miss A. Latham, N.R., C.M.	Ass. Matron	15 July
Mrs. P. Mzimba	Sen. Laundress	1 November
Miss J. Ntshona	Staff Nurse	1 July
Miss M. Paterson	Clerk	1 June
Miss V. Taylor, R.N., R.M.	Sister	10 March

*Resigned during year.

(4) Temporary Appointments during year.

Rev. E. E. G. Field, B.A.	High School	Military Subs. 19 Sep.
Mr. M. X. Ngumbela, B.SC.	" "	1 April to Dec.
Mrs. Q. A. Whyte, M.A.	" "	Military Subs. 19 Sep.
Mr. W. J. Barker, B.A.	Training School	" " "
Miss S. M. Gordon, B.A.	" "	" " "
Miss Z. Zondani	Practising School	1 April to 31 Dec.
Mr. M. M. Yako	" "	" " "
Mrs. E. Rousseau	Domestic Science	17 July to 31 July
Mrs. E. Mjamba	" "	2 Aug. to 31 Dec.

(5) Hospital : Temporary Appointments.

Miss M. E. Belle, R.N.	Relief Nurse	from 3 November
Miss E. Bond	Ass. Laundress	July to Sep.
Miss T. Bosch, R.N.	Relief Sister	from 1 November
Dr. W. W. Frank	Ass. Med. Officer	from 29 July
Miss E. Gregory, R.N.	Relief Sister	from 28 January
Mrs. J. Jolobe, R.N.	Relief Nurse	from 18 September
Mrs. L. Mbete, R.N.	" "	10 Sep. to 27 Oct.
Mr. A. J. Swart	Boilerman	24 June 31 July

(6) Military Leave.

Mr. G. A. Welsh, B.A.	High School	30 Oct. 1939
Mr. J. P. Benyon, B.A.	" "	19 Sep. 1940
Mr. E. N. Brown, B.SC.	" "	"
Mr. J. W. Macquarrie, B.A.	Training School	"
Mr. H. S. Winter, B.A.	" "	"
Mr. G. Lindstrom	Carpentry	June
Mr. J. Pollock	Building	"
Miss J. Guinness	Book-store	26 December
Mr. Innes Vena	Boarding Dept.	6 September
Miss M. M. Henchman, R.N., C.M.	Hospital	18 October

(7) Special Leave during year.

Miss D. James, R.N., S.C.M.	Matron	to 28 February
Miss E. A. Lord, S.R.N., S.C.M.	Sister	from 30 August

(8) Resignations during year.

Mr. H. Nabe, B.A.	High School	31 March
Mr. N. P. Hela	Training School	30 June
Miss H. M. Parker	" "	31 March (pension)
Mr. S. S. Rajuili, B.A.	" "	30 September
Miss C. Makubalo	Practising School	31 March
Miss E. Booi	One-Teacher Sch.	30 June
Miss E. E. Dyasi	Domestic Science	22 August (died)
Mr. A. W. Gush	Colporteur	31 July
Miss H. Ngcetane	District Nurse	6 December

(9) Resignations : Hospital.

Miss E. Bissell, R.N., C.M.	Sister	31 January
Miss G. Flatella	Nurse	23 February
Miss E. Rabe	Clerk	20 April

(10) Resignations at end of year.

Miss F. E. Hewitt, B.Sc.	High School
Mr. K. M. Guzana, B.A.	Training School
Miss R. V. Pauw, B.A.	" "
Mrs. R. M. White, M.A.	" "
Miss J. Dugmore	Domestic Science

STAFF TOTALS 1940

	<i>Men.</i>	<i>Women.</i>	<i>Total.</i>	<i>Wives.</i>	<i>Children.</i>	<i>Aggregate</i>
European	37	45	82	29	22	133
African	40	27	67	31	62	160
	77	72	149	60	84	293

TEMPORARY MEMBERS INCLUDED ABOVE.

European	4	8	12	3	—	15
African	4	4	8	—	—	8
	8	12	20	3	—	23

VICTORIA HOSPITAL BOARD.

(Reconstituted 1 Jan. 1940)

Appointed by Lovedale Governing Council.

Dr. R. T. Bokwe :	Middledrift	1940-1942
Rev. A. W. Wilkie, C.B.E., D.D.,	Principal, Lovedale	1940-1941
Rev. E. W. Grant.	Head : Bible School.	1940

Appointed by Provincial Council : Cape Province.

Mr. George Moorcroft, M.P.C.	Adelaide	1940-1942
Rev. H. L. Henchman	Rector, Alice	1940-1941
Mrs. L. L. Bennie	Alice	1940

Appointed by Minister of Public Health.

Dr. A. Kerr	Princ. S.A. Native College	1940-1941
Dr. C. Ferguson-Davie	S.A. Native College	1940

Appointed by Minister for Native Affairs.

Mr. M. L. Liefeldt,	Native Commissioner, Victoria East	1940-1942 (on Military leave)
Mr. M. G. Apthorp	Ag. Native Commissioner, Victoria East	1940-1942 (Substitute)

Ex-Officio :

Dr. A. F. G. Guinness Medical Superintendent

Chairman : Dr. A. Wilkie

Secretary : Miss S. E. Boyce

VICTORIA HOSPITAL.

STAFF : 1940.

Medical Superintendent and Chief Medical Officer :

Dr. A. F. G. Guinness, M.R.C.S. (Eng.), L.R.C.P. (Lond.)

Surgeon : Mr. W. C. J. Cooper, M.B., Ch.B. (Edin.), F.R.C.S.E.

Assistant Medical Officer :

Mrs. D. Ryan, M.R.C.S. (Eng.), L.R.C.P. (Lond.)

Junior Assist. Medical Officer : †Dr. W. W. Frank.

Matron : Miss D. James, R.N.; C.M. (on leave to 29 Feb).

Assistant Matron : Miss A. Latham, R.N.; C.M. from 15 July

Maternity Sister : Miss E. A. Lord R.N.; C.M. on leave from 30 Aug.

Sister Tutor : S. A. Evans, R.N. C.M. from August
(Ag. Matron. Jan, to Feb).

†Temporary.

Sisters :	Miss M. W. Anderson, R.N., C.M.	
„	*Miss E. Bissell, R.N., C.M.	to 30 Jan.
„	†Miss J. Bosch, R.N.	from 1 Nov.
„	Miss S. A. Evans, R.N., C.M.	from 26 June.
„	†Miss E. Gregory, R.N.	from 28 Jan.
„	Mrs. G. E. Hanna, R.N.; (S.A.)	
„	Miss E. Haygarth, R.N.; C.M.	from 26 Jan.
	(Ag. Maternity 1st. Sept.	
„	Miss M. L. Henchman, R.N., C.M.	Military Leave 18 Sep.
„	Miss M. L. Kerr, R.N., C.M, R.F.N.,	
„	Mrs. Q. Reynolds, R.N., R.M. (S.A.)	
„	Miss V. Taylor, R.N., C.M.	from 10 March
Staff Nurses :	†Miss M. E. Belle, R.N.	from 3 Nov.
	*Miss G. Flatella, R.N.	to 23 Feb.
	†Mrs. J. Jolobe, R.N.	from 18 Sep.
	†Mrs. L. Mbete, R.N.	Sept. Oct.
	Miss J. Ntshona, R.N.	
Radiographer :	Miss M. W. Anderson, R.N., C.M.	
Dispenser :	Miss M. J. Draycott, M.P.S.	
Secretary and Treasurer :	Miss S. E. Boyce.	
Clerks :	Miss P. Kinsley.	from 18 April
	Miss M. Paterson,	„ 1 June
	*Miss E. Rabe	to 18 April
Housekeeper :	Mrs. A. Kirsten	from 23 Aug.
Assistant-Housekeeper :	Miss A. Majiza.	
Teacher :	Mrs. P. Radebe.	
Laundry :	Mr. J. F. Barnard.	Engineer
	†Miss E. Bond	Assistant, July-Sept.
	Mrs. P. Mzimba	Sen. Laundress 1 Nov.
	†Mr A. J. Swart	Boilerman June-July
Outpatients Assistant :	Mr. Joel Dlepu.	
Probationer Nurses :	Total 72. Average 55.	
Domestic :	53	

*Resigned during year. †Temporary Appointment.

PATIENTS TREATED DURING 1940.

Inpatients.

In Hospital 1st January, 1940	141
Admitted during the year	1,216
	1,357
	1,357
Patients discharged "cured"	839
" " "relieved"	208
" " "not improved"	106
Patients died in hospital	76
Patients in hospital 31st December, 1940	128
	1,357
	1,357
Daily average of Inpatients during 1940	146.6

Operations performed.

Major	60
Minor	89
Minor (in Out-patient Department)	153

Out-Patient Department

Total attendances	4,533
Daily average attendance	13.43

Clinics.

Gaga (Discontinued owing to lack of support)	823
Sityi	
Melani (Stopped in August)	380
Ngwenya (Replacing Sityi from	1,161
Kwezana (Replacing Melani from	1,151
District Nurse—Total attendances at five Clinics	
visited weekly	4,519
	(9 months)

**ANALYSIS OF INPATIENT CASES ADMITTED
DURING 1940.**

Tuberculosis of Lungs	66
Tuberculosis of Spine	35
Tuberculosis of Bones and Joints	2
Tuberculosis of Glands	11
Tuberculosis, other forms	15
				—	129
Enteric Fever	38
Typhus Fever	4
Diseases of Digestive System (including dysentery)	57
„ Heart and Blood vessels	19
„ Nervous System	19
„ Eyes	44
„ Kidney and Bladder	34
„ Ear, Nose, and Throat	46
„ Lungs and Pleura—Bronchitis and Pleurisy					26
„ „ —Lobar Pneumonia					64
„ „ —Broncho Pneumonia	35
„ Skin	25
Suppurations	50
Appendicitis	23
Fractures and Dislocations	32
Injuries—Accidents and Assaults	46
Burns	8
Maternity	123
Born in Hospital	106
Gynecological	58
Cancer	14
Syphilis	34
Malnutrition	58
Measles	6
Whooping Cough	15
Diphtheria	2
Rheumatic Diseases	14
Influenza and Pyrexia of unknown origin	24
Hydatid Cysts	3
Hernia	3
Miscellaneous	57
				—	1216
				—	1216

VICTORIA HOSPITAL.

CAUSES OF DEATH.

Tuberculosis of Lungs	5
Tuberculosis, other	6
Enteric Fever	6
Bronchitis, Pleurisy and Pneumonia	14
Whooping Cough and Broncho-Pneumonia	3
Malnutrition	5
Measles	2
Gastro-enteritis	4
Heart Disease	4
Child-birth	1
New born babies (including Prematurity)	6
Meningitis, Encephalitis, and Convulsions	6
Nephritis	2
Syphilis	3
Cancer	4
Fractured Neck	1
Multiple Injuries	1
Burns	1
Septicaemia	1
Senile Diabetes	1
					76

MACVICAR TUBERCULOSIS HOSPITAL.

Admitted to Hospital	157
Discharged—No active Tuberculosis	11
Arrested	2
Improved	20
Not improved	20
Died	22
In Hospital on December 31st, 1940	82
					157

DUX LIST

1940.

<i>High School :</i>	George Matanzima
<i>Training School :</i>	Ethel Calata
<i>Domestic Science :</i>	Vilvinus Ntuli

EXAMINATION RESULTS

1940.

	Grade 1	Grade 2	Total
<i>High School.</i>			
Senior Certificate	1	13	14
Junior Certificate	4	45	49
 <i>Training School.</i>			
Native Primary Higher, 2nd Year	10	20	30
Native Primary Lower, 3rd Year	1	35	36
Native Primary Lower, 1st Year	9	50	59
Infant School Teachers	—	5	5
Housecraft Teachers		1	1
 <i>Domestic Science.</i>			3
 <i>Boys' Industrial (Completion of Apprenticeship Certificates).</i>			
Carpentry			2
Building			5
Printing			4
 <i>Victoria Hospital.</i>			
Final Nursing Examination			4
Junior Nursing Certificate: Anatomy and Physiology			9

ENROLMENT, 1940.

	Boys	Girls	Total
High School	198	75	273
Training School	110	182	292
Practising School	250	247	497
One-Teacher School	24	24	48
Hospital School	17	17	34
	599	545	1,144
Carpentry	38	—	38
Building	20	—	20
Combined Course	8		8
Printing	9	—	9
	75	—	75
Domestic Science	—	32	32
Probationer Nurses	—	72	72
	—	104	104
<i>Aggregate</i>	674	649	1,323

NATIVE FEES RECEIVED.

Comparative view since commencement of Fees in 1871.

1870-1879	£8,174
1880-1889	12,184
1890-1899	26,161
1900-1909	47,153
1910-1919	65,405
1920-1929	97,972
1930-1939	109,237
1940	12,534
Total	£378,820

THE LOVEDALE ROLL.

COMPARATIVE VIEW OF TEN YEARS.

	1931	1932	1933	1934	1935	1936	1937	1938	1939	1940
Boys, Boarders :—										
Pupils	302	337	303	313	331	313	307	326	348	330
Apprentices	53	46	40	46	62	72	71	76	74	75
Hospital School	—	—	23	26	17	21	17	10	22	17
TOTAL	355	383	366	385	410	406	395	412	444	422
Girls, Boarders :—										
Pupils	173	168	184	209	228	211	219	251	291	285
Training in Hospital	43	33	36	43	42	47	56	55	58	72
Hospital School	—	—	16	19	16	24	25	31	25	17
TOTAL	216	201	236	271	286	282	300	337	374	374
Day Pupils :—										
Boys	—	232	216	217	180	228	268	264	275	252
Girls	—	225	250	248	217	241	292	289	286	275
TOTAL	504	457	466	465	397	469	560	553	561	527
AGGREGATE	1075	1041	1068	1121	1093	1157	1255	1302	1379	1323

METEOROLOGICAL REPORT : 1940.

The figures of most interest for the year are given in the table below :

Month	Temperatures F.					Rainfall (inches)	
	Absolute Maximum	Mean Maximum	Temp. of month	Mean Minimum	Absolute Minimum	During 1940	Average for 1880—1940
Jan.	105	90	75	61	45	2.24	2.55
Feb.	103	87	75	63	49	3.57	2.65
Mar.	99	80	69	58	43	6.36	3.14
April	90	75	63	51	41	0.97	1.81
May	84	72	59	47	34	1.91	1.43
June	85	70	57	42	28	0.09	0.91
July	88	73	58	42	25	0.79	0.95
Aug.	91	75	59	44	34	0.11	0.88
Sept.	93	73	60	47	34	2.79	1.66
Oct.	106	81	66	51	38	1.00	2.02
Nov.	101	82	69	56	46	1.50	2.50
Dec.	107	87	74	61	50	1.38	2.50
Total rainfall						22.71	23.00

Mean temperature for the year 65.3° F.

It will be noticed that, while the total rainfall was very near the average, more than half fell in the first three months ; that for eight months the rainfall was below the average, and the year ended hot and dry with a serious shortfall of rain for the last quarter.

C. A. PILSON.

Lovedale Appeal Fund

(1936).

CONTRIBUTIONS TO 31st DECEMBER, 1940.

Contribution, etc., per Statement dated 31st Dec., 1939	£10,230	19	11
Miss A. N. Magocoba	2 6
Lovedale Training School Students	1 4 3
N. P. Bulube	1 0 0
A. Linton	10 0 0
The Native Trust (1st Instalment of £4,000)	..	1000	0 0
Total		<u>£11,243</u>	<u>6 8</u>

Henderson Memorial Church Fund.

STATEMENT AS AT 31st DECEMBER, 1940.

Contributions, etc., per Statement dated 31st Dec., 1939	£863	1	9	
Mr. B. W. Lloyd		1	1	0
" Anonymous "		2	0	0
Miss C. M. Jefferes			10	0
" Anonymous "		5	0	0
Miss F. E. Hewitt		5	0	0
British Kaffrarian Savings Bank. Interest for Year ..		32	7	3
		£909 0 0		
Less Bank Charges				6
Total		£908 19 6		

Collection Number: AD1715

SOUTH AFRICAN INSTITUTE OF RACE RELATIONS (SAIRR), 1892-1974

PUBLISHER:

Collection Funder:- Atlantic Philanthropies Foundation

Publisher:- Historical Papers Research Archive

Location:- Johannesburg

©2013

LEGAL NOTICES:

Copyright Notice: All materials on the Historical Papers website are protected by South African copyright law and may not be reproduced, distributed, transmitted, displayed, or otherwise published in any format, without the prior written permission of the copyright owner.

Disclaimer and Terms of Use: Provided that you maintain all copyright and other notices contained therein, you may download material (one machine readable copy and one print copy per page) for your personal and/or educational non-commercial use only.

People using these records relating to the archives of Historical Papers, The Library, University of the Witwatersrand, Johannesburg, are reminded that such records sometimes contain material which is uncorroborated, inaccurate, distorted or untrue. While these digital records are true facsimiles of paper documents and the information contained herein is obtained from sources believed to be accurate and reliable, Historical Papers, University of the Witwatersrand has not independently verified their content. Consequently, the University is not responsible for any errors or omissions and excludes any and all liability for any errors in or omissions from the information on the website or any related information on third party websites accessible from this website.

This document forms part of the archive of the South African Institute of Race Relations (SAIRR), held at the Historical Papers Research Archive at The University of the Witwatersrand, Johannesburg, South Africa.