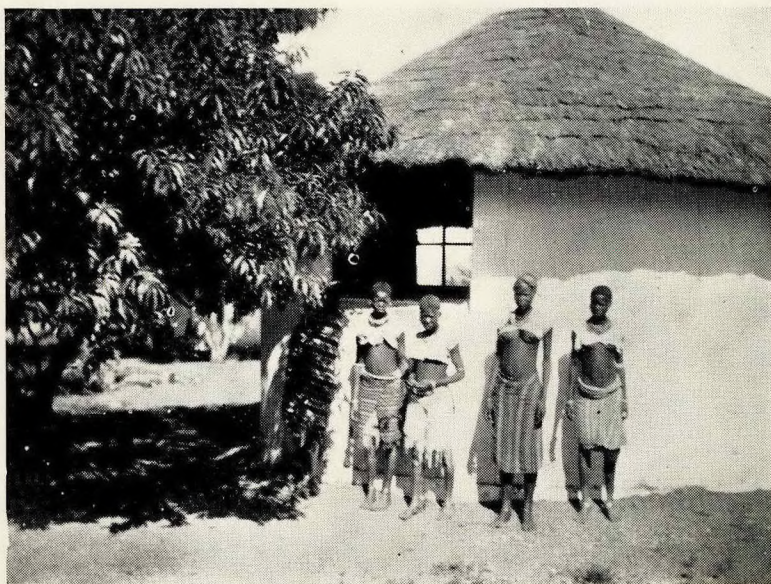


Jane Furse
Memorial Hospital
and
Sekukuniland Mission

(Diocese of Pretoria)

23



Visitors at the Hospital.

Annual Report
— for 1936 —



Between Middelburg and the Hospital.



The Hospital garden under snow. Sept., 1936.

FOREWORD.

THE past year has given us great cause for thanksgiving, and it has been indeed an *annus mirabilis*. It may be well to summarize very briefly here the chief events in the life of the Hospital, which are dealt with more fully in other sections of this Report.

In September the new buildings were opened by His Honour the Administrator of the Transvaal, amidst great rejoicings. The new blocks have enabled us to double the bed accommodation, which now is 40.

The Native Affairs Department, after a visit by Mr. D. Smit, the Secretary, has undertaken to bore for water, and to lay on a supply to the Hospital and to bear the whole cost.

The number of in-patients is a record, viz. 521, a happy indication of the ever-increasing confidence of the natives in our work.

A new maternity ward has been built and paid for by the African members of the C. of E. Women's Help Society, who raised more than £60 from the various diocesan branches.

The Provincial Council has donated £500 to meet the cost of building a Home for the African nurses; at present they are lodged in various separate buildings; building operations should start in July, 1937. Then, although the Hospital has always been a very definite part of our diocesan plant, at last Synod it was raised to the status of a Diocesan Institution, and as such has had its constitution approved by Synod. Some of the members of the Governing Body are elected now by Synod.

It should always be remembered that an important part of the Hospital's work is the training of African nurses. There is a vast need for trained nurses all over the Union, and we hope to take a rightful part in supplying this need.

We welcome Miss Doris Case as Sister, in place of Miss Shotter who has left. We hope to find an additional European Sister to join our staff, and we also need a large increase in the African nursing staff, to cope with the ever-growing number of patients.

We are hopeful that the financial position of the Hospital will permit our installing electric light, and an X-Ray plant, both much needed.

Last but not least the Chapel has been enlarged, a welcome indication of increasing congregations drawn from the neighbouring villages.

I would ask all who read this to join with their thanksgivings their earnest prayers for all who serve the Hospital, for all the patients who attend, and for the missionary work, already so richly blessed.

+ WILFRID PRETOR.

Holy Week, 1937.

THE GOVERNING BODY.

The Rt. Rev. Wilfrid Parker, Bishop of Pretoria.
 The Ven. Archdeacon Jenkin, Director of Native Missions.
 The Ven. Archdeacon Francis Hill, C.R.
 The Rev. Canon E. Herbert.
 Miss D. Maud.
 The Rev. Canon Augustine K. Moeka.
 The Mother Provincial, C.S.M.V.
 The Rev. Father Runge, C.R., DSO., MC.
 The Rev. H. M. Maimane.
 Lt.-Col. H. P. Wolff, O.B.E.
 Mrs. Button.
 Dr. Sanders.
 Mr. A. Tilley.
 Mr. D. Denalane.
 Dr. R. A. Mathews, Superintendent.
 Meetings were held on the following dates: May 19th, at the Hospital,
 and December 4th, in Pretoria.

THE STAFF.

Dr. R. AMHERST MATHEWS (Medical Officer, District Surgeon and
 Superintendent).
 Dr. DOROTHY MATHEWS (Hon. Assistant Superintendent).
 The Rev. Canon AUGUSTINE MOEKA (Chaplain).
 Miss DORIS CASE (Sister).
 Mr. I. S. WANSBROUGH (Estate Manager).

Native Nursing Staff :

Magdalene Kenosi.
 Susan Zondani.
 Hermyna Tsatsi.
 Clara Nxumalo.
 Elizabeth September.
 Dorcas Masemola.
 Charlotte Denalane.
 Sofina Makena.

Postal Address for all Parcels and Letters :

Jane Furse Memorial Hospital, Private Bag, Middelburg, Transvaal.

By Railway :

J.F.M.H. (Lorry Stop), via Stoffberg Terminus, Transvaal.

**Donations, etc., to Secretary at "Jane," or, in England, to the
 Rev. L. Parsons, South Africa Church Office, 40, Wood St.,
 Westminster, S.W. 1.**

STATISTICS FOR 1936.

A. DISTRICT WORK :—

No. of Outlying Clinics = 7.
 No. of New Outpatients seen = 2,101.
 Total No. of Outpatients treatments = 7,926.

B. HOSPITAL IN-PATIENTS :—

	1935.	1936.
European—Male	1	3
Female	6	6
Native —Male	258	260
Female	205	252
Discharged—Cured	200	313
Improved	200	145
I. S. Q.	15	12
Died	24	30
Transferred to other Hospitals	1	2
Left on own accord	15	19

INCIDENCE OF DISEASE IN IN-PATIENTS :—

Venereal Disease	69	93
Glands and Tb.	26	28
Septic Infections and Abscesses	55	73
Accidents and Injuries	98	92
Affections of Alimentary Tract	29	30
" " Chest	26	20
" " Eyes	23	46
Diseases of Women	65	14
Maternity Cases	—	28
(European Confinements		5)
Burns	22	33
Malaria and Fevers	1	4
Mental and Nervous Disorders	5	2
Ear, Nose and Throat	41	51
Heart	5	7
	465	521

ANÆSTHETICS GIVEN :—

General	151	142
Local	49	58
	200	200

Daily Average of Patients for Year = 25. (20—1935.)
 Total No. of In-patient days = 9,088.

The Superintendent's Report.

THE year 1936 has been one of progress and great activity at the Hospital, including as it did the opening of new clinics, a large extension to the Hospital, and the growth of the number of patients.

Statistics.—On another page will be found the usual list of hospital figures—a glance at which will reveal the fact that the total number of in-patients has increased from 470 last year to 521 during the year under review. As the figure of 470 was a record for "Jane," it will be appreciated that the extra 51 this year shows us that we are still marching on in conquering the fears of the people around us.

Now that we have a separate maternity wing our statistics will show the number of maternity cases separately—a figure which we all hope and pray will increase very rapidly.

Clinics.—With the two new clinics opened early in the year at Maila and at Schoonoord, our outlying clinics reached the number of 7, involving a total of 208 trips during the year. Owing to re-organisation by the Government, by which the District Surgeon's area has been slightly reduced, we will be forced to give up the fortnightly Mooiplaas Clinic as from the beginning of 1937. However, our good friend, Mr. Button, the Commissioner of Sekukuni-land, has intimated that we may probably get a new site and so be able to break new ground.

The old lorry, which had done wonderful work for 3 years over our bad roads in acting as ambulance, water carrier and grain conveyer, really came to the time for leaving us. Thus it was decided to buy a new lorry at the cost of £179 cash.

Buildings.—September 4th was a great day in our history—for on that day the Administrator of the Transvaal opened the new extension to the hospital. By the aid of a very generous gift from the Provincial Administrator this large fine building was completed and has given us very much needed extra "bed space." The hospital, now in the shape of three sides of a square, can accommodate 38 Native patients plus 2 European beds. A spacious Out-patient Department, Dispensary, a Pathology Laboratory and small Surgery is also provided in the new wing.

With the aid of £61 collected by the Native Women's Help Society, a Maternity Ward has been erected. This will accommodate four beds, and with an adjoining labour ward (previously a nurses' bedroom), a very compact and convenient Maternity Wing, leading off the main hospital stoep, has been added.

Further activity in building was caused by the enlargement of the Chapel—work on this has been very slow, but should be completed ere long.

At the time of writing the foundations are still the only evidence of the Nurses' Home—however, again through the generous donation of the Provincial Council, £500 has been given to us and work will commence about July, 1937. At last it appears as if the nurses will be housed in a suitable building.

Water Supply.—As I write this report, all the tanks are overflowing and there is water in abundance—unfortunately the reason is not far to seek; this has been the wettest season for about 15 years! However, there is some really good news to relate. About September last the Secretary for Native Affairs paid a visit to the Hospital and was most distressed to hear of our meagre water supply. This sympathy proved to be no mere words and within a week or two geologists and water engineers had arrived from his Department to hunt for a suitable boring site. They have chosen a site and very soon we hope to see them up here boring—at Government expense. They have even promised to bring it up by pipe-line to our doors, if need be.

Nursing Staff.—Four of last year's probationers have left, one to get married, one returned to school and two at their own wish. Sister Shotter has also left and we welcome in her place Miss Case.

Two probationers took the Preliminary Nursing examination but unfortunately failed. The Committee have now agreed to raise the standard of education of entrants as probationers. This is a very necessary procedure as it is neither fair on the Hospital nor the probationers to expect them to pass the very stiff European examination unless holding a Junior Certificate or equivalent qualification.

General.—In conclusion I should like to express my heartfelt thanks for the numerous gifts, both in cash and in kind, received from our many friends in England and South Africa. Without their generous help we would find it impossible to carry on—and I venture to think that this report will show that we **are** wanted and **are** serving the needs of an otherwise neglected people.

Our long felt want of an X-Ray apparatus does seem nearer this year than ever before. Tenders received for the complete lighting and X-Ray plant show the cost to be in the region of £500. Do try to help us to give these people the best treatment available—it is a big item, but I feel sure you will all send us something extra to make it possible.

We are to receive a £50 bequest from the will of the late Mrs. Catherine Macdonald, a friend, who resided about 50 miles from her in the Steelpoort valley. We are indeed grateful to her for her thoughtfulness and love of our work.

R. AMHERST MATHEWS.

Report of the Estate Manager.

THE farming operations have been more or less suspended during the last six months owing to building operations.

The latter consist of an addition to the main building, at the north end, which is a Native Maternity Ward. A sum of about £25 was raised by Mrs. Parker for a verandah, etc., at the rear of the Sisters' house. These have been completed, and the latter provides a cool retreat for the ladies, where they can read and do needlework with complete privacy.

Over £40 was received for the extension of the Chapel. This work is approaching completion. The new part is 35 feet in length.

Chapel Tower and Belfry.—In the centre of the west wall of the Chapel (i.e., at the bottom of the Nave) stone for a width of 8 ft. has been used so that at some future date three outer walls may be added to form a tower and belfry, a west porch way and principal entrance. Here will be hung the very beautiful church bell which is at present on a temporary wooden stand covered with a little thatch. This church bell, of considerable weight and excellent tone, was made by Gillett Johnston of Croydon, England, "to call to worship God and to pray for His handmaidens, Jane Furse, aged 14, in August, 1918, and Rachel Prentice, aged 19, in January, 1919 (A.D. 1922)."

It has also been suggested that, if an opening in the tower is made for a clock face, some day a clock might be provided.

The Chapel's west end, in alignment with the Matron's house, faces the Hospital and thus a quadrangle 30 yards by 50 yards is made.

Tree-planting.—Another 1,500 trees have been planted near the Hospital buildings which will both be ornamental and form a break-wind to protect the grass in the upper (eastern) end of the farm. About 300 pine trees have been established in the new enclosure on the south side of the main road. This piece of land, about 3 acres, was planted with maize for silage and the crop fairly filled the new silo.

Milk.—After all the silage was consumed by donkeys and cattle in the winter, the grass on the farm was not sufficient to maintain the farm animals—over 30 head. One or two cows were still being milked, but they only gave a cupful in the morning and half a cupful in the evening. Two cows calved in the beginning of September, which with the young grass relieved the situation.

Labour.—At present the labour of the farm, herding, milking, waggon work, is being done by small native boys. The chiefs and headmen have called up everyone almost for ploughing and planting the tribal grounds after the wonderful rains that have recently fallen. In addition to these small boys it is desirable that a man be added at a salary of, say, £2 per month in order, amongst other things, to get the fences repaired and a shed built for ploughs, harrows and other machinery, which at present stand in the sun and rain. A valuable disc harrow, a disc plough and other machinery have suffered considerably through exposure.

Rain.—The rainfall for the latter half of 1936 has been : June, nil; July, .02 inches; August, nil; September, 1.05 inches; October, 2.88 inches; November, 4.18 inches; December, 6.05 inches. Total, 14.17 inches.

The next six months will probably give another 8 to 10 inches, which will bring the total for the year well over the average for the past seven or eight years.

Erosion.—The estate being situated entirely on a mountain slope, is very subject to damage by erosion. Considerable labour will be required in forming furrows that will control the rush of storm water that sweeps over the upper half of the estate during heavy rain. In this work of checking erosion the large dam is of most valuable help.

Manuring.—Some of the plough lands are becoming exhausted for lack of manure and for other fertiliser.

Crops.—Four fields have been planted with Hickory King mealies and a quantity of sugar beans have been planted. At one time last winter the latter were fetching 75/- per sack at Lydenburg near here.

General.—The waggon and either oxen or donkeys have been in almost continual use transporting stone, bricks, sand and water for building operations, and the cheerful manner in which our small boys, greatly helped by young girls from the village, hired at three-pence per day, have persevered in this service added to their farm work, is deserving of considerable praise.

IVON S. WANSBROUGH,

14th January, 1937.

Estate Manager.

Sekukuniland Mission Report.

AS reported in our last year's report that Jane Furse Hospital was to be the future centre of this Mission, this centre comes first in our reports this year. The priest in charge is now stationed here.

St. Peter's Marishane's is the biggest of our out-stations with Rev. A. Selahle as an assistant priest. I only pay occasional visits to this station.

The work at Jane is becoming very important. The church services are held both in chapel and on the hospital stoep for the benefit of the patients. Our heathen friends are quite regular at evening services, particularly in the winter months. The enlarging of the Chapel is a great blessing to us, for now there will be room for all who come for festivals from the out-stations. Last year we had our baptism on the hospital stoep, when I baptised twenty-two adults. For the first time in the history of our mission a young man from a royal family in the district with his younger brother and seven cousins were baptised.

Our lay readers are a great help in the mission work. Our doctor conducts services at all clinics, and this strengthens our work. The heathen people learn the value of having both spiritual and bodily needs provided for. They now feel that the two cannot be separated. At one of the clinics last week I was surprised to hear a heathen patient reminding me to begin the service before the doctor came. She asked for the service because she said they never get medicine before the service.

We have been able to divide our services among the four of us so that we all have a part in this great work. Mr. Wansbrough, Doctor Mathews and Teacher Notsi are doing all they can to make the work light for me.

Teacher Notsi is in charge of the outdoor services under the trees at Chiefs Kholokwe's and Matlala's villages on Sundays. The mission girls accompany him in this part of the work. Our nurses also have a part to fill in this part of the missionary work whenever they have a chance to do so. When I happen to be at home on some Sundays, I join the party to help in this fruitful work.

At the time of writing of this report, mission girls are out helping one of the poor heathen women to plough per plot.

Special classes for nurses are held every Friday. Dr. Mathews helps them over some difficulties arising in the Bible study. I give them talks on encountering problems in the mission field. They respond with a very keen interest.



The Bishop and a group of Matabele at Blinkwater on the way to the Hospital.



The two windows and the verandah form the new maternity ward.

The Sunday School class has grown wonderfully under the able leadership of Sister Shotter. Mrs. Mathews and Mrs. Moeka are helping the Mothers' Union.

Jane has a great future as a missionary centre as it is surrounded by many heathen villages. It needs workers with a true missionary spirit, and who have very little to do with self. They must above all remember that God has called us to be labourers together with him. We have a number attending Baptism class.

Marulaneng.—At this centre the work is making rapid growth. The congregation usually consists of more young men than women. Experience has taught me that this sort of progress is never free from detrimental results in the mission field. They always give way with the rush, the same as when they joined. I therefore invite the reader's prayers for this centre.

St. Barnabas, Manganeng.—The work at this out-station has been quite slow due to the frequent changing of catechists. There is however a sign of progress in the work now under one of our former catechists, Symeon Phaladi, who came to join us again from the Pretoria district. We have a few converts here.

St. Paul's, Kleinklipput.—The work here was found by our Bishop whilst still Archdeacon. There were only two communicants from Springs, and he handed the work over to me. To-day there are forty-five communicants in this place, forty-three of them confirmed by the founder. In this place one perceives the presence of God. There is a faithful and honest old Catechist, Cornelius Makola. Very few men like him have I known in my life. He is a true lover of our Lord. A beautiful church house has been put up here. They did the whole work entirely on their own. The Bishop dedicated the nice little church and conducted a confirmation service afterwards on January 31st, 1937.

St. Peter's, Marishane.—I have already mentioned that there is a priest here; the work is not at its best. Here, you will remember, we have our Sisters' Home, but at present they are out doing missionary work.

Let us now thank our friends, especially those oversea, for the help they give us. Our heartfelt thanks are due to St. Mark's, Woolston Parish, who are financing the transport of this mission. We are very thankful to them. We shall also always remember our friend, Bishop Talbot, who still works in England for his old diocese. We thank our South African friends also for their kind prayers.

AUGUSTINE K. MOEKA.

Contributions Received in London for 1936.

	£	s.	d.		£	s.	d.
Tatham, Miss R. M.	0	10	0	Furieux Pelham Hall			
Biggar, Miss E. J.	0	18	0	Meeting	3	15	0
Wokingham, St. Sebastian's				Lubbock, Mrs. Cecil	1	0	0
Children's Service	2	14	4	Turnor, Mrs. S. C.	0	2	0
Porthleven P.C.C.	1	0	0	Otham Sunday School	1	12	6
Hobhouse, Miss D.	1	2	3	St. Hill, Miss A.	5	0	0
Marindin, Miss May	3	0	0	" R. B."	0	10	0
Abbey Gate House Chapel				Dividend on War Loan	0	2	4
Box (Bp. of St. Alban's)	11	1	8	Wade, Michael	0	5	0
Leicester, St. Mark's	0	19	1	Hornchurch, St. Andrew's	3	1	6
Rose, Miss A. M. Allan	0	2	6	Turner, Miss Ruth	1	6	0
Bushey, F. W. O.	0	10	0	Welwyn Garden Meeting	0	10	0
„ Meeting Coll.	2	0	2	Willis, Mrs.	0	3	6
Romford, St. Edward's	17	2	1	Carpmael, Miss A.	0	10	6
St. Alban's Confirmation				Wood, Mr. and Mrs. G. L.	15	15	0
Collections	416	3	3	Mertens, Miss E. L.	5	0	0
St. Alban's Branch	5	15	0	Hicks, Miss R.	0	15	0
Dunmow, Children's Offer-				Hill, Mrs.	10	0	0
ings and Boxes	9	1	6	Manning, Mrs., "In memo-			
Robinson, Miss D.	0	4	6	riam W. M., 24.8.34" ..	0	5	0
Carlisle, Rev. G. B.	0	5	0	de Winton, Miss D.	1	6	0
Carlisle, Mrs.	0	10	0	Finch, Miss E. M.	0	10	0
Martin, Miss N.	0	5	0	Per S.A.C.I., Miss Kemmis			
Ouvry, Miss A.	0	10	0	Betty, 5/-; Mrs. Hugh			
Talbot, Miss L. C.	1	7	0	Bell, £3 3/-	3	8	0
Crossley, Mrs. (Somerset				Fane, Miss Doris	1	0	0
Branch)	10	0	0	Howard, Mr. and Mrs.,			
Chilton, Miss	0	2	6	H. Weston	1	0	0
Denehfield, Miss M. S.	5	0	0	Yarm-on-Tees, 1st Yarm			
Grant Wilson, Mrs. (for				Guides	5	0	0
freight of parcel)	0	5	0	Debenham, Miss M. H.	5	0	0
Punt, Miss M. C.	1	1	0	Wansbrough, Rev. H. S. ..	2	2	0
Mann, Miss P.	0	5	0	Abraham, Miss J.	3	0	0
Coles, Mrs. S.	0	2	6	Fulham Hospital and In-			
Griggs, Mrs. S. (freight)	1	0	0	stitution Offertory	1	1	0
Murray, Miss A. H.	1	1	0	Bunbury, Mrs.	2	0	0
Oxford, St. Frideswide's ..	5	0	0	Dray, Mrs. Ernest	5	0	0
Edwards, Mrs. A. G.	1	0	0	Holmes Chapel	0	10	0
Pye, Miss U.	0	10	0	Per Wollaston, Mrs.: Miss			
Anon., per Sir A. Hirtzel	50	0	0	Burrows, 5/-; C. H. Fox,			
Irthlingborough Sunday				6/-; Miss Francis, £1;			
School	5	5	0	Mrs. E. J. Woolley, 10/-;			
Atherley School	5	0	0	Miss M. V. Wollaston,			
Head, Mrs.	0	17	4	15/-; Mrs. Wollaston, £1;			
Rogers, Mrs. E.	1	1	0	Miss M. Pearson, £1/1/-	4	17	0
Thorley Village	3	9	5	Aitken, Miss E.	2	0	0
Claxton, per Miss (freight)	0	2	6	Sewell, Miss D.	2	0	0
Gillam, D. C.	0	10	6	Andrew, Deaconess Wini-			
Binks, Mrs. E. A.	2	10	0	fred	1	1	0
Tanner, Miss K. W.	0	15	0	Halliburton, Mrs.	0	5	0
Bedford, St. Paul's Branch	31	11	7	Lees, Miss G. A.	1	3	6
Bank Exchange on Remit-				Jollands, Mrs.	1	1	0
tances	0	7	8	Meiklejohn, Mrs.	1	1	0
Squires, per Mrs.	0	10	0	Bishop's Stratford, All			
Rathbone, Mrs. W., jr.	0	10	0	Saints' Sunday School ..	2	1	0

Stubbs, Mrs. W. T.	1	1	0
Bidlake, Miss E. M.	0	2	6
Hodgson, Mrs.	0	2	6
Pydeltrethide M. U.	0	15	1
Abbots Bromley, School of St. Mary and St. Anne	1	0	0
Anon.	5	0	0
Howard, Miss B.	10	0	0
Hartford, St. John's, Sun- day School	1	3	0
Mirfield, St. Paul's East- thorpe K.M.S.S.	2	10	0
Waldron Parish F.W.O.	1	6	0
Stogdon, Rev. E.	0	10	0
Bailey, Mrs. G.	2	9	0

Totteridge Girls' Bible Class	0	7	0
Kingham, Miss L.	0	8	1
Robinson, Miss D.	0	5	0
Earlsdon, St. Barbara's, Young People	10	10	4
	<hr/>		
	* £736	7	8

* The total shewn in the Revenue Account is £707 16s. 2d. The difference is due to the fact that only amounts actually received at the Hospital during the year are brought into the accounts.

Various.

	£	s.	d.
Diagnostic Equipment :			
St. Alban's, Bishop of, and Mrs. Furse	32	5	8
	<hr/>		
Lorry :			
Lubbock, Mr. and Mrs. Cecil	5	0	0
Mure, Mrs. James	1	0	0
Anon., per Mrs. Mure ..	3	0	0
Sawyer Atkin, Mrs.	5	0	0
Whitmore, Miss	1	0	0
Marindin, Lady	1	0	0
Lewis, Mrs. Howard	0	2	6
Alington, Miss	0	2	6
Rose, Miss A. M. Allan	0	3	6
de Winton, Miss D.	0	5	0
Willis, Mrs.	0	10	0
Gibson, Mrs.	0	5	0
Anon.	0	2	6
Wright, Mrs.	0	10	0
Luard, Miss C. G.	0	5	0
Jackson, Miss E. M. H.	0	1	0

	£	s.	d.
Anon.	50	0	0
Hurst, Mrs.	2	0	0
Marindin, Miss	1	0	0
Astell, Miss	1	1	0
Bate, Miss	0	10	0
Marindin, G. E.	0	10	0
Marindin, Miss E.	0	10	0
Anon.	0	1	0
Landon, per Dr. E.	2	2	0
Lawrence, Miss A. H.	0	5	0
St. Alban's G.F.S. Club Miss. Fellowship	1	2	6
Canon Moeka, for African Boy :			
School of S. Mary and S. Anne	1	0	0
	<hr/>		
	£78	8	6
	<hr/>		
Sekukuniland Transport :			
Woolston's, S. Mark's ..	£60	0	0
	<hr/>		



The two new blocks.

South Africa.

Mr. and Mrs. Holt, Umkomaas	£3 3 6
-----------------------------	--------

DONATIONS FOR SPECIAL PURPOSES carried forward to next account.

Bekker Bed (Mrs. Button)	9 17 6
Upkeep of Bed, St. Wilfrid's, Pretoria	10 10 0

Duivelskloof and Tzaneen Bed	12 10 0
Malton Bed (per S.P.G.)	29 2 0
Per Transvaal and S.R. Mission Native Nurses' Home	2 2 0
General Expenses (African Boy)	1 0 0
Daughters of Mary	2 2 0
	<u>£67 3 6</u>

Gifts in Kind.

- Miss Betty Howard, "Fairfield," 14, Hall Place, Gardens, St. Alban's: Clothes, Toys.
- Sister Edith, 279, Frederika St., Gezina, Pretoria: Bottles.
- Mrs. V. S. Faithful, Storrington Rectory, Pulborough, Sussex: Dolls.
- Arcadia Nursing Home: Dressings, etc., Surgical Gloves.
- Mrs. Geoffrey Carlisle, The Rectory, Barberton: Pyjamas and Bandages.
- Miss Robbins, Oxford Cottage, Holm next to Sea, King's Lynn, Norfolk: Bath Towels, Sheets, Pillow Cases, Fancy Bags.
- Mrs. Dorres, Broughing Vicarage, Ware, Herts: Linen.
- Mr. O. Staten, White River: Bottles.
- Mothers' Union, Waterval Boven: Pillow Cases, Bandages, Nightgowns.
- Mrs. Rathbone: Linen, Jam Jars, Bottles.
- Mr. I. Spooner, 5, Matthews St., Dunstable, Beds.: Bed Jackets, Bedspreads, Socks.
- Mrs. Fleming, St. Edward's, Romford (Working Party): Pillow Cases, Towels, Shirts, and other useful articles.
- Archdeacon Cameron, Furneaux, Pelham, Buntingford, Herts: Patchwork Quilt.
- Mrs. Grant Wilson, Old Hayes, Sidmouth, Devon: Woollens and Patchwork Quilt.
- Mrs. G. A. Butcher, 187, Troye Street, Sunnyside: White Quilts.
- Miss Marten, 140, Bloed Street: Bottles, Instruments and other articles of use.
- Mrs. Durrant, Leverstock Green, near St. Albans: Patchwork Quilt from Children's Guild.
- Mrs. Robins, St. Paul's Vicarage, Bedford: Bandages, Novels, Garments.
- Miss Claxton, 43, Roman's Road, Southsea: Miscellaneous Garments.
- Miss Wilkinson, 62, Falconer Road, Bushbey, Herts: Pyjamas, Sleeping Suits, Bandages, Bed Socks, and Babies' Clothes.
- Mrs. Wilfrid Parker, Pretoria: Cutlery, Lanterns, etc.
- Mrs. T. Frere, Troyford House, Bishop Stortford: Miscellaneous.
- Miss Butler, 484, Church St., Pretoria: Miscellaneous.
- Mrs. Palmer, The Residency, Nelspruit: Bottles.
- Mrs. Faithful: Dolls and Toys.
- Mrs. Griggs, Harbledown, Canterbury: Towels and Sheets.
- Rev. M. L. Couchman: Second-hand Vestments.

The origin of some gifts is not known owing to addresses not being legible.

THE JANE FURSE
INCOME AND EXPENDITURE ACCOUNT

EXPENDITURE.		
To	Working Expenses—	
	Salaries and Wages	£922 7 1
	Hospital Drugs and Disinfectants	£259 10 6
	Surgical and Dispen. Sundries	36 17 2
	Petrol and Travelling Expenses	40 17 5
	Rent, Clinic	15 7 6
	Lorry Expenses	55 19 10
		408 12 5
	Domestic—	
	Provisions and Fuel	£482 4 0
	Blankets, Linen, Hardware, etc.	112 7 6
	Estate Expenses	67 17 10
	Repairs and Renewals	16 6 4
		678 15 8
	Office Expenses—	
	Audit and Accounts	£12 3 0
	Bank Charges	0 18 9
	Bad Debts	8 7 0
	General Expenses	35 16 4
	Insurance	15 8 3
	Printing and Stationery	38 6 1
		110 19 5
	Depreciation—	
	Lorry	£107 14 5
	Furniture	38 10 9
	Instruments and Appliances	85 0 0
		231 5 2
		£2,351 19 9
To	Reserve Account for X-Ray Diagnostic Apparatus	500 0 0
„	New Buildings Account, provided out of Revenue	201 9 11
„	Donations for Special Purposes transferred to Balance Sheet	67 3 6
„	Balance of Income over Expenditure transferred to Balance Sheet	123 4 9
		£3,243 17 11

MEMORIAL HOSPITAL.

for the year ended 31st December, 1936.

INCOME.		
1935.		
Dec. 31.	By Balance from 1935 accounts	£551 16 9
	„ Hospital Fees—	
	Native Patients	£432 15 1
	European Patients	88 13 3
	Dept. of Public Health	161 18 0
	Native Recruiting Corporation	90 10 6
		773 16 10
	„ Donations to General Fund—	
	Johannesburg Diocese	£88 19 3
	Pretoria Diocese	66 3 4
	South Africa (except the above)	3 3 6
	England (except Diocese St. Alban's and Transvaal and S.R. Missions)	3 17 0
		162 3 1
	„ Collected by the Transvaal and Southern Rhodesian Mission—	
	Confirmation Offertories in the Diocese of St. Alban's, 1935	£240 0 0
	Surgical and Disp. Expenses	5 11 2
	*General Fund	707 16 2
		£953 7 4
	Less Transferred to Sekukuni Mission	
	on a/c 1935 Collection	£77 14 10
	†on account of 1936	147 5 6
		225 0 4
		728 7 0
	„ Collected by the S.P.G.—	
	Per Diocesan Finance Board	£9 18 1
	Rev. Yates	9 18 6
		19 16 7
	„ Grants in Aid—	
	Transvaal Prov. Administration	£500 0 0
	Dept. of Native Affairs (training of Native Nurses)	330 0 0
		830 0 0
	„ Donations for Special Purposes received through Transvaal and S.R. Missions—	
	Lorry Replacement	£78 8 6
	Diagnostic Apparatus	32 5 8
		110 14 2
	„ Donations for Special Purposes, carried forward to next account	67 3 6
		£3,243 17 11

*Includes £416 3s. 3d. Confirmation offertories, St. Alban's Diocese, 1936.
†On later information received this amount is overstated approximately £83, which will be adjusted in 1937.

Caxton  Pretoria.

22)

—

Collection Number: AD1715

SOUTH AFRICAN INSTITUTE OF RACE RELATIONS (SAIRR), 1892-1974

PUBLISHER:

Collection Funder:- Atlantic Philanthropies Foundation

Publisher:- Historical Papers Research Archive

Location:- Johannesburg

©2013

LEGAL NOTICES:

Copyright Notice: All materials on the Historical Papers website are protected by South African copyright law and may not be reproduced, distributed, transmitted, displayed, or otherwise published in any format, without the prior written permission of the copyright owner.

Disclaimer and Terms of Use: Provided that you maintain all copyright and other notices contained therein, you may download material (one machine readable copy and one print copy per page) for your personal and/or educational non-commercial use only.

People using these records relating to the archives of Historical Papers, The Library, University of the Witwatersrand, Johannesburg, are reminded that such records sometimes contain material which is uncorroborated, inaccurate, distorted or untrue. While these digital records are true facsimiles of paper documents and the information contained herein is obtained from sources believed to be accurate and reliable, Historical Papers, University of the Witwatersrand has not independently verified their content. Consequently, the University is not responsible for any errors or omissions and excludes any and all liability for any errors in or omissions from the information on the website or any related information on third party websites accessible from this website.

This document forms part of the archive of the South African Institute of Race Relations (SAIRR), held at the Historical Papers Research Archive at The University of the Witwatersrand, Johannesburg, South Africa.