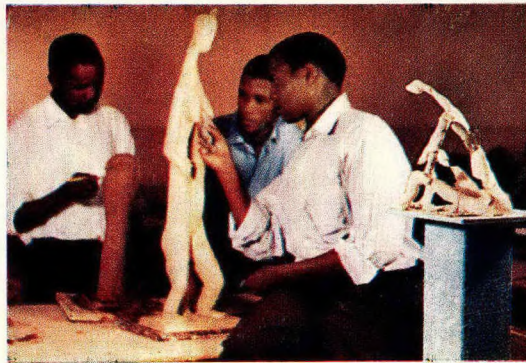




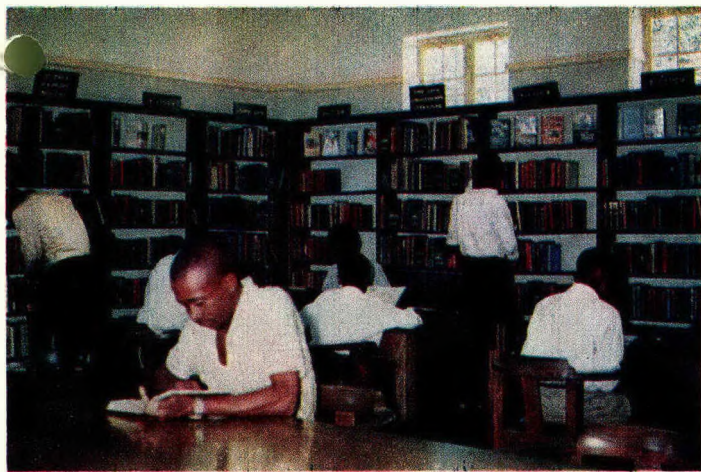
Modern music is an irresistible challenge to the younger Bantu.



The classes in sculpture and modelling are very popular.



Art students are given skilled instruction in various techniques.



Growing literacy has been accompanied and assisted by the growth of library services.

Culture

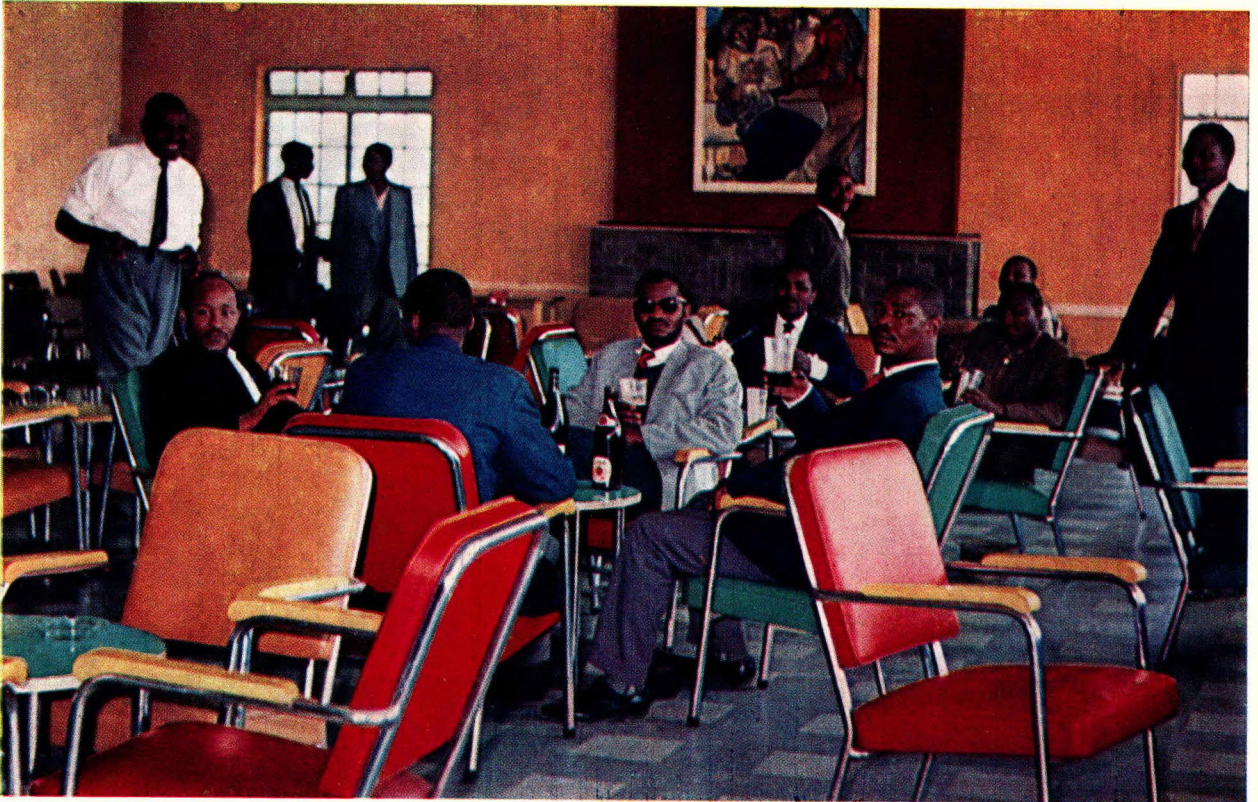
(CONTINUED)

The aim of the Cultural Section is to develop the art potential of the Bantu in Johannesburg. Classes for adults and children are held in every major branch of the arts, including music, painting, sculpture, ball-room dancing and ballet.



Orchestras attain a high standard and have given some performances which will be long remembered.

R56,000,000
has been spent on Housing,
Recreation and Community Services
(Amenities and Special Services)



Customers enjoying a drink and a chat in the pleasant surroundings of a bar lounge.

During August, 1962, European liquor became legally available to Non-Europeans and the Council was entrusted with the sale of this type of liquor in the Bantu townships. Sixty supply points for the distribution of the liquor have been sanctioned

by the Government for the Bantu townships. The council has opened initially only 16 off-sale and three on-consumption points, the latter in the form of modern bar lounges where customers can enjoy a drink and a chat in pleasant surroundings.

Beer Profits contribute towards full and happy lives

- ★ To make up losses on housing schemes
- ★ For Social Welfare and Amenities
- ★ As Capital Expenditure

In view of the high financial demands for the provision of housing and other amenities, it would have been impossible for the Council to discharge its responsibilities in this respect had it not been for the existence of a municipal monopoly in the manufacture and sale of Bantu Beer, the traditional low alcoholic beverage. One-third of the profits derived from the sale of Bantu beer are spent on services

calculated to improve the social welfare and recreational amenities for Bantu residents within the area of the urban local authority. The other two-thirds of the profits may be used towards financing housing schemes for them.

Bantu beer is retailed from 24 beerhalls, beergardens and off-sales depots, 18 of which are situated within the Bantu residential area.



The picture shows a number of residents relaxing with a tinkard of their traditional Bantu beer, rich in vitamins and foodvalue.

Beer Profits provide:



Funds for Housing Deficits



Creches



General Recreation



Bursaries



Grants-in-Aid



Vocational Training



Medical Services



Issued by the
NON-EUROPEAN AFFAIRS DEPARTMENT
of the
CITY COUNCIL OF JOHANNESBURG

Manager: W. J. P. CARR
P.O. Box 5382 Johannesburg

First Issued: February, 1964

Re-issued: February, 1967



ILLUSTRATED AND DESIGNED BY T. Y. LILJESTROM
PRINTED BY RADFORD ADLINGTON LIMITED

Collection Number: A1132

Collection Name: Patrick LEWIS Papers, 1949-1987

PUBLISHER:

Publisher: Historical Papers Research Archive, University of the Witwatersrand, Johannesburg, South Africa

Location: Johannesburg

©2016

LEGAL NOTICES:

Copyright Notice: All materials on the Historical Papers website are protected by South African copyright law and may not be reproduced, distributed, transmitted, displayed, or otherwise published in any format, without the prior written permission of the copyright owner.

Disclaimer and Terms of Use: Provided that you maintain all copyright and other notices contained therein, you may download material (one machine readable copy and one print copy per page) for your personal and/or educational non-commercial use only.

This collection forms part of a collection, held at the Historical Papers Research Archive, University of the Witwatersrand, Johannesburg, South Africa.