

h.s.

9,5,1,7

ENTOKOZWENI

(W.O. 1501)



Annual Report

1957.

JUNE 16 1958



"In as much"

Offices:

Corner 12th AVENUE & LONDON LANE,
ALEXANDRA TOWNSHIP.

Phone: 40-1201/2.

MEMBERS OF THE BOARD OF MANAGEMENT, 1957.

Adv. R. S. Welsh	—	Chairman.
Mrs. J. Raikes	—	} Vice-Chairman.
Dr. E. Hellman	—	
Mr. P. J. Badenhorst	—	
Mrs. R. Jacobson	—	
Mrs. B. Unterhalter	—	Hon. Secretary.

Mrs. M. Dey, Miss I. Etheridge (Municipal Social Affairs Department), Mrs. F. Fanaroff, Miss I. Finn (S.R.C.), Miss M. Franklin, Miss C. Getz (Social Studies students), Mrs. M. Gordon, Mrs. R. Lazar, Mrs. L. Losh (Union of Jewish Women, Johannesburg Branch), Mr. S. J. Mathebula, Mr. S. Ngatane, Miss J. E. Norse (Municipal Non-European Affairs Department), Dr. G. Peacock (Faculty of Medicine), Miss E. Ponsonby (African Children's Feeding Scheme), Mr. M. Schechter (S.M.C.), Dr. F. Schaefer (Alexandra Health Centre and University Clinic Staff), Mr. Justice O. D. Schreiner, Mr. F. R. Thabede (Transvaal Association of Non-European Boys' Clubs), Mrs. A. Welsh (Alexandra Health Centre & University Clinic), Mrs. L. S. Williams.

MEMBERS OF ENTOKOZWENI STAFF, 1957.

Director:

Miss H. L. McLean, B.Sc. Home Ec.

Assistant Director and Secretary:

Miss W. A. Donaldson, M.A. — from 15.8.57.

Medical Officer:

Dr. H. Gordon, M.B., B.Ch., D.C.H.

Social Workers:

Mrs. P. Masekela, Dipl. in Soc. Work — till 31.3.57.

Mrs. G. Ndlovu, Dipl. in Soc. Work.

Mr. C. Denelane, Dipl. in Soc. Work — till 31.8.57.

Mr. Z. J. R. Sibande, Dipl. in Soc. Work.

Mrs. L. Sigauke, Dipl. in Soc. Work — from 1.5.57.

Mrs. G. Bopape, Dipl. in Soc. Work — from 1.9.57.

Domestic Science Teachers:

Mrs. M. Mvbaso, Teacher's Dom. Science Cert.

Mrs. G. Ngubane, Teacher's Needlework Cert. — from 1.5.57.

Nursing Sister:

Sister H. Madikiza, Gen. Nursing, Midwifery, Soc. Medicine.

Nursery School Teachers:

Miss M. Kgope (Head Teacher).

Miss E. Radasie.

Miss E. Quntana.

Mrs. C. Sibeko.

Miss A. Fume — till 31.8.58.

Mrs. M. J. Radebe — from 1.9.58.

Grade School Teachers:

Miss W. Malinga.

Mrs. E. Ntontela.

Mrs. T. Piliso.

Mrs. W. Piliso.

Driver/Clerk:

Mr. W. Piliso.

Clerk:

Miss C. Dalamba.

Hon. Boxing Instructor:

Mr. T. Mthembu.

Cook:

Miss M. Makhala.

Domestic Staff:

5 members.

CHAIRMAN'S REPORT.

It is exactly twelve years ago since Entokozweni or, as it was then known, the Family Welfare Centre, was formed in Alexandra Township. The development from that time when, in a small pre-fabricated structure, a staff of one European and three African social workers catered for the needs of 44 families (approximately 200 people), has indeed been considerable.

To-day the buildings of Entokozweni extend over the major part of the upper end of No. 3 Square in the Township. We have a staff of three Europeans and twenty-four Africans, and the number of people availing themselves of the various services offered by Entokozweni is close on 2,000.

Despite the enormous progress that has been made, the work of Entokozweni still only touches on the fringe of what is to be done. The population of the Township has been estimated at over 100,000, a mass of humanity herded together in an area of one square mile. The living conditions of these people leave much to be desired and, when they need assistance or guidance, they automatically turn to Entokozweni.

The facets of our work are untold; if possible, no one is turned away, whether it be the woman requiring sewing or cooking tuition, the child needing the benefits of either the nursery or grade schools, the adolescent attending the play centres after school hours, the invalid or mental case needing medical attention or the distress case not knowing where to find food for the next meal.

1957 was a satisfactory year. Despite the fact that we could not embark on any programme of expansion because of a limited income, it was, nevertheless, a period when we were able to develop and consolidate those numerous services that had been brought into being over the past few years. Particularly gratifying efforts were the two African Fetes held during the year. These were entirely African efforts, for members of our groups made the articles, the stalls were organised and managed by members of our staff, and the people of the Township flocked to buy their requirements at prices well within their means. A detailed survey of the many activities operating at Entokozweni appears in the Reports of the Director and Medical Officer, and I wish to take this opportunity of expressing my warm appreciation to all members of staff who, through their co-operation and untiring efforts, have made these services possible.

The Students of the University provide our main source of revenue and we are deeply grateful to them for their continued interest and financial support. But, however much they contribute, we still have to call on the general public to supplement our needs, and to those many donors, whose names appear at the end of this Report, we extend our sincere thanks for the generous manner in which they have at all times responded to our appeals.

In conclusion, I wish to thank the members of the Board of Management for their support and co-operation and, in particular, Messrs. Clothier & Poole who have once again audited our accounts in an honorary capacity.

R. S. WELSH.
Chairman.

DIRECTOR'S REPORT.

Once again there have been many changes in Entokozweni during the past year. In my report for last year I said that we at the Centre did not anticipate that our voyage in 1957 would be without squalls but, given reasonable support and added accommodation, we looked forward to an adventurous voyage. Neither the squalls nor the adventure have been lacking, but the support given has enabled us to meet both. The most exciting event of the year, a 75' extension to the hall, will be completed by the time this report goes to print.

My term as Acting Director expired at the end of January but, as Mrs. Noriskin resigned, I was appointed in her place as Director. For this privilege and opportunity I am sincerely grateful to the Board of Management.

We deeply regret that owing first to the serious illness and later to the death of Mrs. Sach's husband, she was unable to resume duties as Secretary. We were very sorry to lose Mrs. Sachs who for so many years was the continuous European link in the Centre.

Mrs. Kemeng, Nursery School, found travelling difficult and resigned at the end of January. Her place was taken first by Miss Fume and later by Mrs. Radebe. In April, Mrs. Masekela, Social Worker, was appointed to a position in Germiston and in May Mrs. Sigauke, who had been in charge of our Nursery School before she went to the Jan Hofmeyr School of Social Work for further study, was appointed in her place. At this time it was felt that more help was required in the Sewing Clubs and Play Centre crafts groups, and Mrs. Ngubane was appointed to assist Mrs. Mybasa. In August it was agreed that a full-time Assistant Director should be appointed and Miss Donaldson joined the staff in the middle of August to look after the secretarial side, to help with Play Centre and to give advice when called upon. To her quiet efficiency goes a great deal of the credit for the spirit which now prevails. Mr. Denelane, Social Worker, who had undertaken the responsibilities of married life, decided to change over to insurance work and left us at the end of September, and Mrs. Bopape was appointed on a probationary basis in his place.

The bus boycott at the beginning of the year disrupted the work somewhat as eight staff members had to travel from areas outside Alexandra.

Despite the inevitable effect that all these changes had on staff and children, there has been remarkably little disruption of the work.

NURSERY SCHOOL



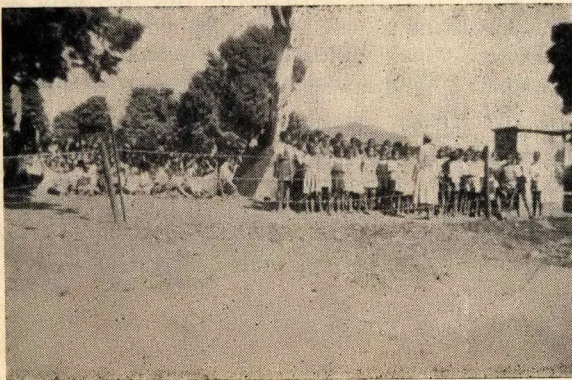
teaching of personal cleanliness continue to be important features of the Nursery School programme while activities are graduated according to the age and ability of the child. There is always a long waiting-list for admission. Illness is kept at a minimum due chiefly to the untiring and kindly supervision by Sister Madikiza. Miss Hallett and Mrs. Joseph, after a short unavoidable break, have given most valuable help and encouragement to the Nursery School teachers, and for this we are very grateful.

Without the wonderful gifts of milk from Messrs. I. W. & B. Jacobson, fruit, vegetables and toys from various European schools and Nursery Schools, mealie meal and oats from Messrs. H. Lewis & Co. and coal from Messrs. W. R. McPhail (Pty.) Ltd., we could not look after the physical needs of the children in the way we do, and so we say a very grateful thank you to them from 142 happy, healthy children.

BOITUMELONG NURSERY SCHOOL

During the year the Management Committee of Boitumelong continued to take over more of its administrative responsibilities, and although Entokozweni continued to provide meals at cost, the Committee paid for an extra helper to prepare vegetables. It has now taken over complete control, and we wish it well.

GRADE SCHOOL



The average enrolment was 228 children for whom there were four teachers. The standard of work has improved considerably and teachers are conscientiously carrying out their duties. At the end of the year every child was tested and most promoted. The whole of the Standard II class was

promoted to Standard III and — regretfully — passed out into other schools.

A good attendance has been maintained even in the coldest weather.

In Standard II a high standard has been achieved in needlework and Mrs. Mvbaso has done excellent work in needlework with the girls. The boys in the meantime have done very good work in drawing with Mrs. Herman and Miss Malinga.

Thanks to the African Children's Feeding Scheme, the children in the Grade School enjoy a drink of "puza mandhla" daily.

Many of the children attend the Play Centre in the afternoon and both pupils and teachers have taken an active part in the projects and activities and enjoy them immensely.

In spite of the difficulties of having neither walls nor desks, both teachers and pupils seem to be very happy.

SEWING AND COOKERY CLUBS

We continued the experiment, started last year, of having all clubs (except the Saturday afternoon group) meeting in the Centre. This has been an unqualified success and has meant a saving of time, labour and equipment. All groups worked very hard for the two "All-African" Fetes held in June and December, which realised approximately £200. This was most gratifying, not only from the financial point of view, but also because it served to give members a feeling of doing something for Entokozweni and certainly improved the spirit. The standard of work exhibited in December was high, and it is interesting to note that we had entries from 17 of the 22 Avenues in the Township. There was wide variety and originality and a feature of the garments was that many of them had been made from samples which had been donated and had been cleverly put together. We are most grateful to the many firms and individuals who gave us materials.

The Cookery classes were most popular, and much constructive work in the teaching of proper feeding at no extra cost and in the value of vegetables was done.

Women and girls continued to find work as a result of what they had learned at the Centre, and it is gratifying to note that on their days "off" they came back to join the clubs. A most enthusiastic 16 year-old group has started, and it is hoped to include other activities in their programme.

To the loyal band of voluntary helpers who have come regularly once a week to help with these groups we owe a deep debt of gratitude, and here I must particularly mention Mrs. Herman, Mrs. Lewis and Mrs. Colman. Their task has not always been easy, but by their interest and loyalty they have stimulated enthusiasm. Through Mrs. Herman, we are indebted to H. J. Henochsberg (Pty.) Ltd. for continuing to service and repair the sewing machines.

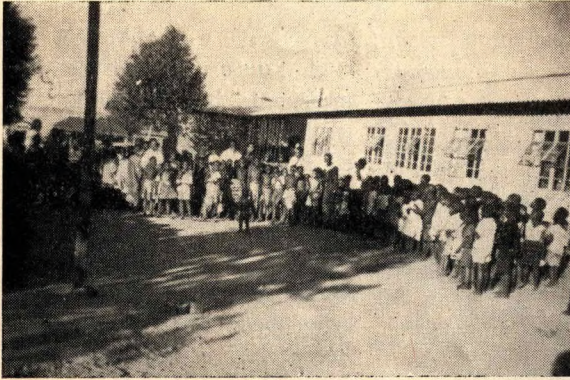


If success can be measured by numbers, we have certainly achieved it here. There is no compulsion to attend, and we have to rely on our ability to satisfy the needs of the children to bring them to the Centre. Except during school holidays, our numbers have been between 600 and

800 each day. The programme continued to expand as the leaders' ideas developed.

The standard of girls' crafts has improved tremendously since Mrs. Mvbasa and Mrs. Ngubane have devoted two afternoons a week to them, and many saleable articles were made for the "All-African" Fetes. The girls have also displayed a keener interest in cooking.

Project work played an important part and two major projects were presented. After studying various leaflets, maps and pictures of many countries, the staff decided to concentrate on Scotland, and Scottish dances, songs and poetry were learned by the children. An illustrated map was made from material, and towns, rivers, mountains, castles, Cathedrals, Universities, industries were inserted. In June, the project was presented at the Annual Meeting, when the programme included 4 Scottish Dances, 4 Scottish songs, 2 Scottish poems verse-spoken in the vernacular, and the pictorial map and a wall newspaper were on view. In December, a Nativity Mime in which 800 children took part was also presented. In addition to singing 13 carols in Sotho, Xhosa, Zulu and English (the last included 2 from Poland and 1 from Czechoslovakia), the children helped in the making of all the props and costumes. It is interesting to note that a sound film was made of the Mime and sent to London for transmission to the Commonwealth in the Christmas Newsreels. Many smaller projects, mainly in African drama and singing, were undertaken during the year. Crafts too, mentioned previously, played a big part in the programme of activities. Thursday continues to be Sports Day and the improvement here is very marked. The programme is arranged to cater for the different age-groups and is planned to last 4 weeks with a competitive Sports Day on the fifth Thursday.



Older boys and girls have continually been given opportunity to "lead" small groups, and this side of the work can be greatly developed given continuity in the personnel.

The weekly training group has proved of great value, and has developed into an "all staff" session of fun and education. It is gratifying to note that our

staffing problem for our large Play Centre has been greatly helped by the voluntary assistance of Grade School and Nursery School staff, each member of both staffs taking a turn of duty once a week. 3rd year students from the Jan Hofmeyr School of Social Work have attended the Centre throughout the year for periods of 3 months, and 1st and 2nd year students have come once a week for group work. We have enjoyed having them and trust that they have benefited by their time with us. They have entered wholeheartedly into all activities.

We greatly appreciate the weekly gift of soup stock from Barry's Nosh Bar, Hillbrow, for our Friday Play Centre soup.

SOCIAL CASE WORK

Several experiments have been tried to lighten the heavy case load. Reporting on every case at the Case Conference has been abandoned, and only problem cases are discussed, although each social worker gives a regular written report on all cases. The Township has been zoned and each worker has five or six Avenues to supervise. Monthly statistical reports are given. It has also been arranged that when three case workers are out in the field, one remains in the Centre to interview, saving those who come for help a wait of three or four hours. The social workers undertook the investigation following the Sylvia Pass lorry accident in February. The outbreaks of gang warfare throughout the year made more work. The nature of the work remains much the same from year to year:— applications for old age pensions, invalidity and maintenance grants, workmen's compensation, admission to old-age homes and mental institutions, pass difficulties, repatriation, finding suitable employment, and in general the alleviation of poverty and distress in so far as this is possible and advice and help in family and social problems. The number of distress cases seems to increase monthly, and with the limited amount of money at our disposal, the selection is often heartbreaking. Fortunately a few kind friends give regular subscriptions for this side of the work, and these help considerably.

There is much still to be done in determining the responsibility of the different agencies concerned with social welfare work in Alexandra

Township, but a very happy spirit of co-operation exists, and at the instigation of Entokozweni, a start has been made to mutual knowledge of one another's work and spheres of influence by the holding of monthly informal meetings of representatives at the Centre.

EVENING CLUBS

These clubs continue to grow and to maintain an excellent standard of achievement. They are open every evening Monday to Thursday, and on Saturday afternoon. Poor lighting still precludes the inclusion of crafts in the programme. During the year, the following cups and championships have been won:—

Boxing, Amateur.

- Johannesburg and District Bantamweight cup.
- Johannesburg and District Featherweight cup.
- Johannesburg and District Lightweight cup.
(28 clubs competed from all the Reef Townships).
- Alexandra and District Featherweight cup.
- Alexandra and District Bantamweight cup.
- Alexandra and District Lightweight cup.
- Alexandra and District Welterweight cup.
(8 clubs competed).

Boxing, Professional.

- South African Light Heavyweight champion.
- Transvaal Middleweight champion.
- Transvaal Welterweight champion.
- Toured with professional boxers in Bloemfontein, Cape Town, Durban, Bulawayo and Lourenco Marques.

Softball.

Reached Transvaal finals: Came 3rd out of 50 teams: toured Bloemfontein and Natal.

Music.

A Gala Music Troup of 60 members has been formed. Their activities include Band, Choir, Tap Dancing and Penny Whistlers.

A junior section has been started for younger boys interested in boxing, and the seriousness with which they undertake their strenuous training augurs well for future boxers.

We were sorry to lose Mr. Theo Mthembu who has done so much to promote and encourage the boys' club, but are glad to welcome Mr. Moses Mofolo in his place.

It is encouraging to record that one of our members — the former captain of our Soccer team — has gone to England to be tried out for Wolverhampton Wanderers, and that another member, Edward Kekane, knocked out the South African lightweight champion boxer. Unfortunately he himself was subsequently knocked out in Durban.

One of our members who was assaulted and badly stabbed in the Township by four tsotsis asserts that he owes his life to the fact that he was able to put into practice what he had learned in the boxing group.

VEGETABLE CLUBS

These had to be suspended during the bus boycott, as no transport was available for buying, but for the rest of the year they have been functioning normally. The unusually high price of vegetables has had its effect on the amount it is possible for the people to buy. We still hope that this side of the work may be greatly extended. Again we are very grateful to the staff of the Welfare Department of P.U.T.C.O. who continue to buy and deliver to us vegetables from the Newtown Auction Market.

BUILDINGS AND REPAIRS

With the completion of the 75' extension to the hall in sight, we look forward to much more space and comfort for children and adults and to greater development in the number and nature of the activities we can offer.

In answer to an appeal, kindly made by the Star, we were able to put a good, used stove into the staff dining-room and another in the original hall for cookery demonstrations. Our thanks to the Star, and the donors, and to the Orange Grove Plumbers who not only fitted them at reduced rates but donated a slow combustion burner for the kitchen.

HIGHLIGHTS OF THE YEAR

Exhibition of Work and Project on Scotland: June, 1957.

"All-African" Fete: June, 1957.

Farewell concert to Mr. and Mrs. J. Colman: September, 1957.

Inauguration of Alexandra Welfare Organisations Discussion Group:
October, 1957.

Christmas Party for over 1,000 children: December, 1957.

Youth Club Christmas Party for 200: December, 1957.

Exhibition of Work and Nativity Mime: December, 1957.

"All-African" Fete: December, 1957.

There is no yardstick by which to measure what the services offered by Entokozweni mean to the people of Alexandra Township. One thing is certain — the need for what Entokozweni provides is urgent and ever-growing. A living Family Welfare Centre can go in one direction only — forward — and this calls for maximum effort on the part of all those who have its interest at heart. Here I would like to express my deep appreciation to the Board of Management for its confidence and understanding, to Mrs. Lazar and her Fund-Raising Committee and to Mrs. Jacobson who not only has continued to spend hours of work as Treasurer but has been the means of bringing in many regular subscriptions, and who has never been too busy to give advice and practical help in the day-to-day emergencies. In conclusion, I would like to express my grateful thanks to the staff and pay special tribute to them. They have worked together for the good of the whole under great difficulties and sometimes danger, and have made of Entokozweni the “place of joy” which its name implies. We go forward to 1958 fully believing that our united efforts will be crowned with success and that “the reward of a thing well done is to have done it.”

HILDA L. McLEAN,

Director.

MEDICAL OFFICER'S REPORT.

STAFF AND DUTIES

The staff of the medical section has been constant, consisting of a full-time Sister and a doctor attending one afternoon a week. The burden of the work fell mainly on Sister Madikiza whose varied activities included health education, immunisation, treatment of minor illnesses, distribution of medicines and carrying out of treatment. Medical sessions were concerned with supervision of mothers and babies, attention to the sick, supervision of cases of malnutrition and alcoholism, and the medical assessment of those requiring old age or disability pensions.

The figures below indicate the scope of activities. Only those attending on clinic days or referred by sister have been seen by the doctor — the remainder have been attended to by Sister Madikiza.

Routine Health Examination	153
Cases of illness	1,304
Malnutrition	475
Mother and Baby attendances	487
Home visits	338
Cuts and bruises	2,665

IMMUNISATION:—

(a) Combined Diphtheria, Pertussis, Tetanus	617 doses
(b) Vaccination	7,981 doses
(c) Diphtheria and Typhoid	6,754 doses

MISCELLANEOUS:

Flu epidemic: For a short time attendances were very large, but on the whole patients suffered relatively mild attacks.

MOTHER AND BABY ATTENDANCES (487)

In most cases attendances were for feeding advice, and immunisation was then carried out. Our constant struggle was against cereal feeding. In an appreciable number of cases wrong feeding was due to ignorance, but in general milk in adequate amounts is too expensive for the average family — even the powdered milk Entokozweni sells at cost price. Most of our problems are due to poverty and to the resultant factors that mothers must work and that illegitimacy is the rule rather than the exception.

MALNUTRITION (475)

Except for a few cases where this was due to alcoholism and a further few cases where mothers fed babies mealie-pap through ignorance, the majority of these cases were cases of starvation as a result of poverty. The worst cases were fed at Entokozweni, with gratifying results — gains of weight and improvement in general health occurred rapidly. It is noteworthy that hospitals and clinics treating these patients with expensive vitamin preparations do not get comparable results, but they cannot prescribe food even though that is the only satisfactory treatment.

IMMUNISATION

The Medical Officer of Health has reported a gratifying decrease in infectious illness. This may be due to many factors but the only routine immunisation in Alexandra, apart from the immunisation of babies at the Welfare clinics held at the University Clinic and Entokozweni, is that carried out by Sister Madikiza. Registers were provided by the Health Inspectors and materials by the M.O.H. Alexandra and routine immunisation was carried out in the schools. Combined immunisation against diphtheria, pertussis, tetanus was used for babies, smallpox vaccination for all, and immunisation against diphtheria and typhoid for older children.

HEALTH EDUCATION

This was constantly stressed, the main problems being education in hygiene and infant feeding. However only a small proportion of problems are due to ignorance, the major part resulting from abject poverty, shocking housing conditions and the lack of elementary facilities such as piped water, satisfactory sewerage, electric lighting etc.

Sister Madikiza assists Miss Ponsonby of the African Childrens' Feeding Scheme twice weekly at Film shows, and at all times our members are urged to use Entokozweni's vegetable club and cost price powdered milk scheme.

THE NURSERY SCHOOL

The children have always been supervised by Sister, but during 1956 it was decided to institute medical examinations for them. 5 were examined each week and some remediable physical defects detected. When the programme has been completed, it may be possible to examine all new entrants to the nursery and grade schools.

The average weights of children in the nursery school in 1957 were as follows:—

7 year olds	39 lbs.
6 year olds	37 lbs.
5 year olds	35 lbs.
4 year olds	30 lbs.
3 year olds	27 lbs.

These weights are below those which would be considered satisfactory for white children. Weight gains during the year were satisfactory and we assume that school feeding is at least partly responsible for that.

MISCELLANEOUS

In addition to the work recorded above Sister carried out a survey of 100 people's response to films shown by Miss Ponsonby.

Dr. Kuper as part of a research project did a tuberculosis skin test and mass X-ray survey of all children attending Entokozweni. Incidental to his survey 4 cases of active tuberculosis were detected and referred for treatment.

ACKNOWLEDGEMENTS

As will be seen from this report Sister Madikiza has a heavy responsibility and discharges it well.

The M.O.H. Alexandra, Dr. Xuma, provided vaccines for our campaign and his health inspectors the school registers.

Our thanks, also, to Mrs. Williams who continued to attend every week, to assist Sister with immunisations.

Our appreciation to the Director and her staff for their ready co-operation in helping us with our difficulties.

H. GORDON.

Medical Officer.

ENTOKOZWENI

Balance Sheet as at 31st December, 1957.

1956			
£431	ACCUMULATED FUNDS		£594 17 3
587	Balance as at 1st January, 1957	£431 0 4	
	Add 1955 Nursery School Subsidy	114 15 9	
		545 16 1	
12	Add Appropriation from Equipment Fund	25 0 0	
		570 16 1	
599	Add Excess of Income over Expenditure for the		
- 168	year ended 31st December 1957	24 1 2	
		4,566	
4,566	SPECIAL FUNDS		5,457 14 4
4,173	Building Fund	4,289 16 1	
	Balance at 1st January, 1957	£4,172 11 7	
	Add Bequests:		
	Estate Prenter	250 0 0	
	Estate Salkinder	25 0 0	
	Estate Snider	100 0 0	
		4,547 11 7	
	Less Capital Expenditure	257 15 6	
		500 0 0	
	Motor Car Replacement Fund	90 1 1	
	Lorry Fund	284 10 4	
310	Equipment Fund	309 10 4	
	Balance at 1st January, 1957	25 0 0	
	Less Expenditure transferred to		
	Accumulated Funds	25 0 0	
		293 6 10	
24	Christmas Party Fund	2,975 0 0	
59	(Creche)	911 13 9	
		2,975 0 0	
3,100	STUDENTS RAG COMMITTEE	911 13 9	
	(Grant for six months ended 30th June, 1958)		
936	SUNDRY CREDITORS	£9,939 5 4	
		£9,033	

1956			
6,584	BUILDINGS	£6,842 1 9	
6,584	Less Reserve	6,842 1 9	
	(NOTE: No value has been placed on these buildings as they are erected on land which is not the property of Entokozweni).		
1,259	FURNITURE, FITTINGS & EQUIPMENT	£1,155 5 0	
	At Cost less Depreciation		
721	MOTOR CAR	577 0 0	
	At Cost less Depreciation	134 7 3	
267	SUNDRY DEBTORS	8,072 13 1	
6,786	CASH		
	On Fixed Deposit with Building Societies with		
	interest accrued to date	2,075 7 11	
4,331	On Current Account with Building Societies with	5,058 13 2	
	interest accrued to date	938 12 0	
493	On Hand and at Bank	£9,939 5 4	

The Members,
ENTOKOZWENI:

We have been unable to reconcile receipts with individual deposits or the total receipts. Subject to the foregoing we have examined the books, accounts and vouchers and explanations which, to the best of our knowledge and belief, were necessary for the Centre so far as appears from our examination of those books.

The above Balance Sheet and the annexed Income and Expenditure Account are in and according to the explanations given to us, the Balance Sheet gives a true and fair view Expenditure Account gives a true and fair view of the income and expenditure for the year

Johannesburg.

6th May, 1958.

receipts with the total deposits for the year. The deposits were, however, greater than the of Entokozweni for the year ended 31st December, 1957, and have obtained all the information purposes of our audit. In our opinion, proper books and accounts have been kept by the

agreement with the books of account and, in our opinion, and to the best of our information of the state of the Centre's affairs as at the 31st December, 1957, and the Income and ended on that date.

CLOTHIER & POOLE,
Chartered Accountants (S.A.),
Hon. Auditors.

ENTOKOZWENI

Income and Expenditure Account for the year ended 31st December, 1957.

1956		1956
£3,631	ADMINISTRATION EXPENSES	£3,517 4 3
2 210	Salaries and Wages	£2,271 6 8
383	Motor Car Expenses	380 0 3
173	Stationery	125 12 3
155	Telephones and Postages	100 10 5
73	Maintenance and Repairs	65 14 10
	Household Expenses	£239 12 9
	Less Coal Donation —	
266	W. R. McPhail	41 6 0
	198 6 9	
51	General Expenses	96 15 2
	Depreciation:—	
315	Motor Car, Furniture and Equipment	272 7 0
5	Bank Charges	6 10 11
	2,003 GROUP ACTIVITIES	2,166 2 1
	Arts and Crafts Materials	£71 16 0
52	Less Pupils Fees	12 8 3
	59 7 9	
1,743	Social Workers Salaries	1,830 11 2
	Grade School Salaries and Ex-	
	penses	669 16 4
176	Less Fees and Donations	419 5 8
	250 10 8	
30	Recreation	25 12 6
2	(Workroom)	
591	MEDICAL SECTION	576 4 1
480	Salaries	528 15 7
111	General Expenses	47 8 6
2,229	NURSERY SCHOOL	2,527 9 4
	Salaries and General Expenses	954 2 1
543	Less Pupils Fees	316 3 0
	637 19 1	
	Feeding	2,420 5 6
	Less Donations:—	
	H. Lewis & Co. Ltd. (Mealie	
	Meal)	20 9 0
1,686	I. W. & B. Jacobson (Milk)	510 6 3
	1,889 10 3	
	FOOD AND VEGETABLE CLUBS	
588	Purchases and Expenses	184 19 4
588	Less Sales	184 19 4
105	DISTRESS FUNDS	279 9 9
	(SUNDRY LOANS)	
44	(Amount written off)	217 14 8
	CRECHE	24 1 2
	EXCESS OF INCOME OVER EXPENDITURE	
	transferred to Accumulated Funds	24 1 2
£8,603		£9,308 5 4
		£8,603
	DONATIONS AND GRANTS	£8,316 6 2
5,260	Students Rag Committee	£5,825 0 0
350	Union of Jewish Women	350 0 0
750	Social Welfare Department Subsidy for Creche	712 13 9
1,496	Annual Subscribers and Donors	1,428 12 5
88	(Tributes for Dr. L. S. Williams)	
73	MEMBERSHIP FEES	71 16 6
156	INTEREST RECEIVED AND ACCRUED	216 2 1
261	FUNCTIONS	704 0 7
295	Proceeds	1,008 5 9
34	Less Expenses	304 5 2
	(EXCESS OF EXPENDITURE OVER INCOME)	
169	(Transferred to Accumulated Funds)	
		£9,308 5 4

We gratefully acknowledge the generous donations and invaluable support from the following:—

- | | |
|--|--|
| A.B.C. Co. | Central Agency, Ltd. |
| Adler, Mrs. H. | Central News Agency. |
| Advance Laundries, Ltd. | Central S.A. Lands & Mines, Ltd. |
| Aegis Shipping Co. (Pty.) Ltd. | Clothier, N. M. |
| African Cables, Ltd. | Clydesdale (Tvl.) Collieries, Ltd. |
| African Explosives & Chemical Industries, Ltd. | Collins Motor Supplies. |
| African Schools Fund, London. | Colman, Mrs. J. & U.S.A. Friends. |
| African Sewing Cotton Co., Ltd. | Columbus Distributors. |
| Agranat, Dr. A. L. | Concession Stores & Allied Trades Assistants' Union. |
| American Manufacturers' Representatives, Association Ltd. | Connell Instrument Co. (Pty.) Ltd. |
| Anderson, Dr. C. V. | Cullinan Refractories. |
| Apex Mines, Ltd. | Cyrildene School. |
| Arkles, Miss M. & Young, M. | Davenport & Meyer (Pty.) Ltd. |
| Aronsohn, Mrs. I. | Dauids & Haas. |
| Balkind's Agencies (Pty.) Ltd. | Dauids, Mrs. J. |
| Ball, Mr. J. L. E. | Dederick, Mr. & Mrs. T. |
| Barnett's, Ltd. | De Saxe, Dr. B. |
| Beehive Broom & Brush Manufacturers (per Mr. E. Phillips). | Diethelm, C. |
| Bentel, Dr. H. | Dima Paints, Ltd. |
| Berman, Mrs. Z. | Dominec (Pty.) Ltd. |
| Bloomberg, Dr. B. M. | Douglas Low & Co. |
| B'Nai B'Rith Lodge (Sisterhood). | Edblo & Main Tin Manufacturers (Pty.) Ltd. |
| Boffard, Mrs. R. | Edelstein, Dr. J. |
| Bowen, Sessel & Goudvis. | Edgars Stores, Ltd. |
| Bowman, L. & Michel. | Elgin Structures (Pty.) Ltd. |
| Brewers' Institute of S.A. | Epstein, Dr. H. |
| Brittan, Wm., Ltd. | Equity Building Society. |
| Brown, Dr. Lester J. | Eriksen Consolidated Holdings Ltd. |
| Brown Bayleys S.A. (Pty.) Ltd. | Eriksen Motors. |
| Buxton, Noel, Trust, London. | Fairmount Junior School. |
| Caltex (Africa) Ltd. | Fairmount Junior School (per Barbara & Raymond Kemp). |
| Canadian Women's Club. | Fairmount Junior School (per Lesley Frysh & Sandra Joffe). |
| Castle Wine & Brandy Co. | |
| Censor & Braudo (Pty.) Ltd. | |

Fairmount Junior School (per Standard III A Girls).
 Farrow, Laing & McKechnie.
 Fatti, Mr. L.
 Federated Employers Mutual Assurance Co., Ltd.
 Fischgrund, S. & Son (Pty.) Ltd.
 Forster, Dr. H. Parke.
 Franco Signs Africa (Pty.) Ltd.
 Frankel, Mrs. B.
 Freedman, Simon.
 Friedlanders Mills (Pty.) Ltd.
 Friedman, Mrs. L.
 Friedman, Dr. S.
 Friedmann, Dr. A. I.
 Frith, Mr. R.
 Garber, Dr. N.
 Geen & Richards, Ltd.
 Gerstle & Hochstadter (Pty.) Ltd.
 Glanville Enthoven S.A. (Pty.) Ltd.
 Goldby, Panchaud & Webber.
 Goldfoot, Mrs. M.
 Goldwater, Dr. H. G.
 Gordon, Mrs. D.
 Gordon, Dr. H.
 Granzier, Mrs. R.
 Greenstein, Mrs. L.
 Greig, Chas., & Son (Pty.) Ltd.
 Guerlain S.A. (Pty.) Ltd.
 Gulliver, Mrs. A. V.
 Gunn & Van Es (Pty.) Ltd.
 Haddon, Evelyn, & Co. Ltd.
 Hancox, Mr. S. A.
 Harley Furnishers (Pty.) Ltd.
 Harrowe's, Ltd.
 Harvey & Russell (Pty.) Ltd.
 Hemer & Forsyth (Pty.) Ltd.
 Henwoods, Ltd.
 Hill & Murray, Ltd.
 Hillman Bros., Ltd.
 Hilson, Mr. A. H.
 Hochstadter, Mrs. T.
 Hoffman, Mrs. I.
 Holman Bros. (Pty.) Ltd.
 Houghton Golf & Bowling Club.
 Houghton School.
 Huggins, Dr. B. T.
 Hyalco Manufacturing Co. (Pty.) Ltd.
 Hyman, A.
 Ichiawitz, Mrs.
 Immelman & Winckworth, Drs.
 Isaacs, Kessel, Feinstein & Co.
 Jacobs, L. K. & Co., (Pty.) Ltd.
 Jaff & Co., Ltd.
 Jaffee, Mrs. H.
 Jeppe High School for Boys.
 Jeppe High School for Girls (League of Service).
 Jeppe Plumbing & Sheet Metal Manufacturers (Pty.) Ltd.
 Joffe, A. S. (per Mr. J. Y. Graff).
 Johannesburg Australian Society.
 Johannesburg Building Society.
 Johannesburg High School for Girls.
 Johannesburg High School for Girls (Prefects).
 Johannesburg Motor Exchange.
 Kaganton, Mrs. G.
 Kapelus, M.
 Kaup, Dr. H. F.
 Keatings Pharmacy, Ltd.
 Keen's Electrical Distributors (Pty.) Ltd.
 Kenilworth Junior School.
 Kensington Golf Club, Ladies' Section.
 Killarney Bowling Club, Ladies' Section.

- Killarney Golf Club, Ladies' Section.
 King Edward VII Preparatory School.
 Koseff & Co.
 Kotkin, Mrs. A.
 Krantz, B.
 Krawitz, A. R.
 Laing & Roberts (Pty.) Ltd.
 Lakofski, S.
 Langton, C. M. & Partners (Pty.) Ltd.
 Leigh, Dr. J. S.
 Lewis, M. G.
 Lombarde Investments, Ltd.
 McGregor, Dr. M.
 McKinnon Chain, S.A. Ltd.
 Marks, Mrs. L.
 Martha Washington Club.
 Mendelsohn, R. M.
 Menell, S. G. Trust Account.
 Modderfontein Dynamite Factory,
 Women's Welfare Society.
 Mosenthals, Ltd.
 Moskow, Miss D.
 Motor Jobbers, Co.
 Muller, I. & Son (Pty.) Ltd.
 Newland, Mr. and Mrs. J. E.
 New Union Goldfields, Ltd.
 North British & Mercantile Insurance Co.,
 Ltd.
 Oppenheimer & Son Ltd.
 Orr, John & Co., (Pty.) Ltd.
 Oxford Committee for Famine Relief,
 England.
 Picot & Moss.
 Pilgrim Booksellers (Pty.) Ltd.
 Polliack & Co.
 Potts, Mrs. G. & Friends.
 Prenter, Mrs. Anni, estate the late (per
 Wm. Aronsohn, Solicitors).
 Price, Mrs. B. J.
 Prudential Assurance Co. Ltd.
 Raikes, Mrs. J.
 Randles, Bro. & Hudson, Ltd.
 Rankin, G. K. & Co., (Pty.) Ltd.
 Raphaely, L. (Pty.) Ltd.
 Refrigeration Equipment Co. (Pty.) Ltd.
 Reid, Martin, Murray & Telford.
 Rillstone Motors.
 Roberts Construction Co., Ltd.
 Roberts, Miss S.
 Robor, Ltd.
 Rogers-Jenkins & Co. (Pty.) Ltd.
 Rosenberg, Mrs. O.
 Sachs & Berman.
 Sacker, Mrs. M.
 Saffer Bros. (Pty.) Ltd.
 Saint James Presbyterian Church.
 Saint Mary's School, Waverley, Clayton
 House.
 Saker Bartle S.A. Ltd.
 Salkinder, Mr. Jacob, estate the late (per
 Messrs. Edward Nathan Friedlander,
 Mansell & Lewis).
 Sash, Mrs.
 Scaw Metals, Ltd.
 Schlesinger Organisation.
 Scott, Miss.
 Seligson & Clare, Ltd.
 Shell Co. of S.A. Ltd.
 Silove & Fehler, Drs.
 Slavin, N., & Co. (Pty.) Ltd.
 Smith, James, Trust.
 Snider, Mr. Leopold, estate the late (per
 Messrs. Deneys Reitz, Jacobson &
 Effune).
 Solnick, Paul, Fur Co.
 Soper, Stanley M. (Pty.) Ltd.
 S.A. Phillips (Pty.) Ltd.
 Southern Building Society.
 Southern Transvaal Bowling Association.
 Southey, R. J. (Pty.) Ltd.

Standard General Insurance Co. Ltd.	Union of Jewish Women, Johannesburg Branch.
Stern, Gabriel, & Co.	Unit Securities & Trust Co. of S.A. Ltd.
Stuttaford & Co., Ltd.	United Building Society.
Suzman, L., Ltd.	United Trunk Manufacturers (Pty.) Ltd.
Suzman, Dr. M. M.	Venetian Blind Specialists (Pty.) Ltd.
Swires, Miss R.	Vivian, J. H. & Co. Ltd.
Tarmac Asphalt Requirements (Pty.) Ltd.	Walton, Mr. A. J.
Tavistock & Uitspan Collieries, Ltd.	Watson, Mr. Norman.
Teeger, Dr. A.	Waverley Girls High School.
Tesla Radio Corporation of S.A. (Pty.) Ltd.	Weinbren, Mrs. B.
Thrupp & Co. (Pty.) Ltd.	West Rand Engineering Works (Pty.) Ltd.
Transvaal Mattress & Furnishing Co. Ltd.	Whyte, Mrs. Quintin.
Truworthis, Ltd.	Wickl, Dr. A.
Tuchten, L., Tvl. (Pty.) Ltd.	Wise, Walter, & Co.
Turner, Miss D. M.	Zidal, Mrs. Z.
Underwear Manufacturers (Pty.) Ltd.	
Union Flooring Tiles Factory (Pty.) Ltd.	

DONATIONS IN KIND

Space does not allow for individual acknowledgement of donations in kind, which in 1957 were extremely generous and varied. They included, babies' chairs, cots, and prams, blankets, books and magazines, clothing of all kinds, including knitted garments for destitute children and adults, crockery, food of all kinds, including cakes, fruit and sweets, furniture, large quantities of jumble, medical supplies, play and games equipment, sample materials, typewriter and wool. We acknowledge them with gratitude.

CHRISTMAS PARTY

We would especially like to thank the many firms and schools and the individuals who so generously gave money, food, ice-cream, minerals, sweets and toys and the Golden City Post, the Rand Daily Mail and the Johannesburg Star for making an appeal for gifts.

⊗ PROMPT___5/58

Collection Number: AD1715

SOUTH AFRICAN INSTITUTE OF RACE RELATIONS (SAIRR), 1892-1974

PUBLISHER:

Collection Funder:- Atlantic Philanthropies Foundation

Publisher:- Historical Papers Research Archive

Location:- Johannesburg

©2013

LEGAL NOTICES:

Copyright Notice: All materials on the Historical Papers website are protected by South African copyright law and may not be reproduced, distributed, transmitted, displayed, or otherwise published in any format, without the prior written permission of the copyright owner.

Disclaimer and Terms of Use: Provided that you maintain all copyright and other notices contained therein, you may download material (one machine readable copy and one print copy per page) for your personal and/or educational non-commercial use only.

People using these records relating to the archives of Historical Papers, The Library, University of the Witwatersrand, Johannesburg, are reminded that such records sometimes contain material which is uncorroborated, inaccurate, distorted or untrue. While these digital records are true facsimiles of paper documents and the information contained herein is obtained from sources believed to be accurate and reliable, Historical Papers, University of the Witwatersrand has not independently verified their content. Consequently, the University is not responsible for any errors or omissions and excludes any and all liability for any errors in or omissions from the information on the website or any related information on third party websites accessible from this website.

This document forms part of the archive of the South African Institute of Race Relations (SAIRR), held at the Historical Papers Research Archive at The University of the Witwatersrand, Johannesburg, South Africa.