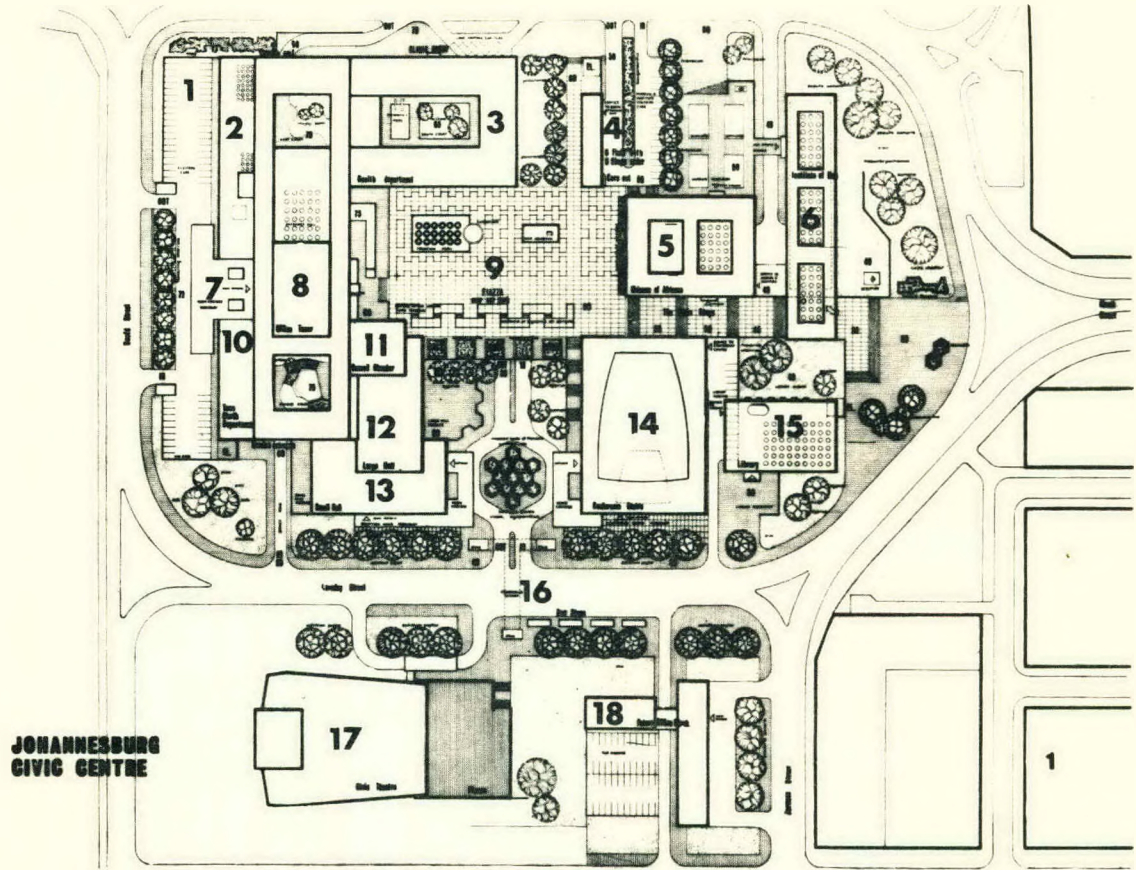
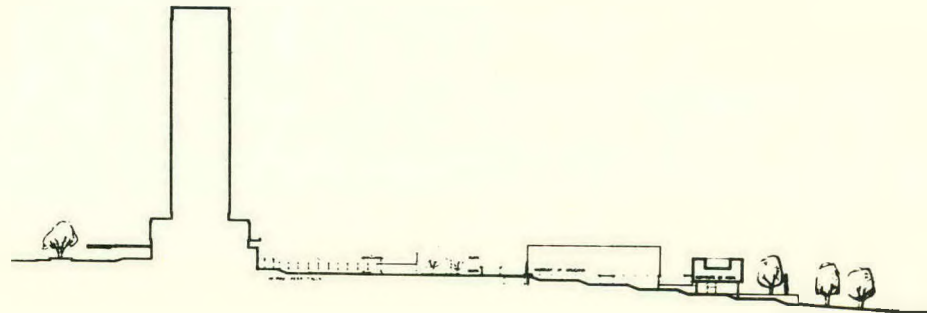


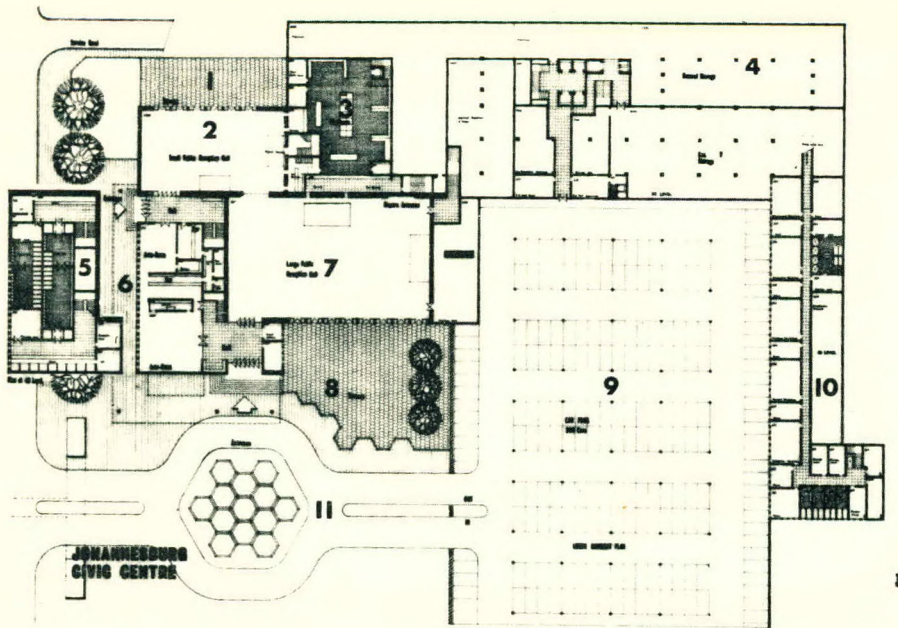
SITE PLAN **Scale 1:3000**

1. Visitors' Parking
2. City Health Department
3. City Health Department
4. Shopping Precinct (Staff Flats Over)
5. Africana Museum
6. Institute for the Study of Man in Africa
7. Main Entrance
8. Administration Office Tower
9. Piazza
10. Town Clerk's Department
11. Council Chamber
12. Large Reception Hall
13. Small Reception Hall
14. Civic Auditorium
15. Branch Library
16. Pedestrian Subway
17. Civic Theatre
18. Future Office Block



NORTH/SOUTH SECTION THROUGH PIAZZA





LOWER GROUND FLOOR PLAN

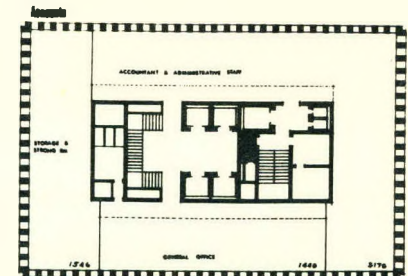
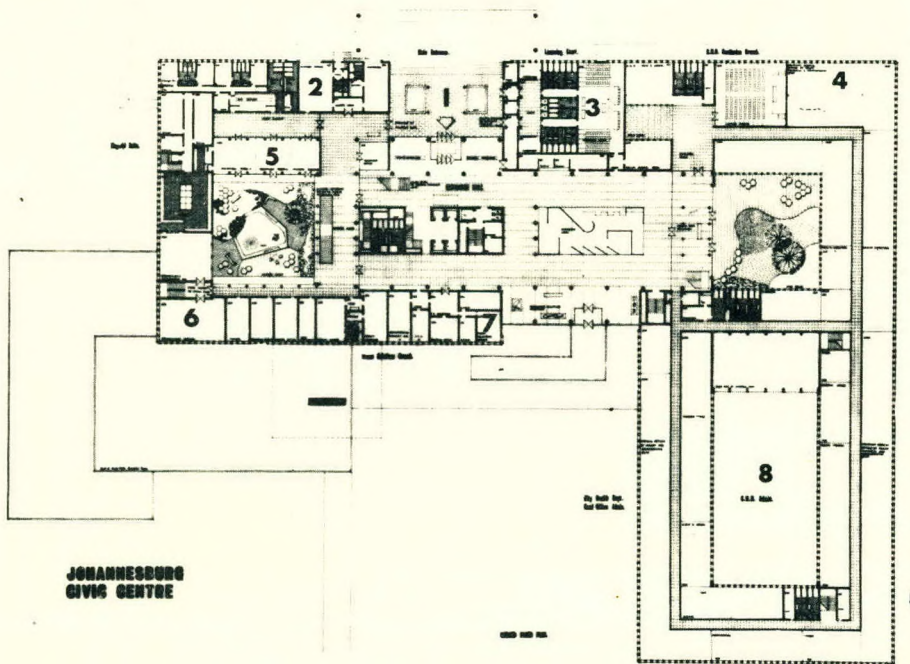
Scale 1:1500

1. Terrace
2. Small Reception Hall
3. Kitchen
4. Storage
5. Cloaks
6. Ante Rooms
7. Large Reception Hall
8. Terrace
9. Visitors' Parking
10. Workshops
11. Forecourt

GROUND FLOOR PLAN

Scale 1:1500

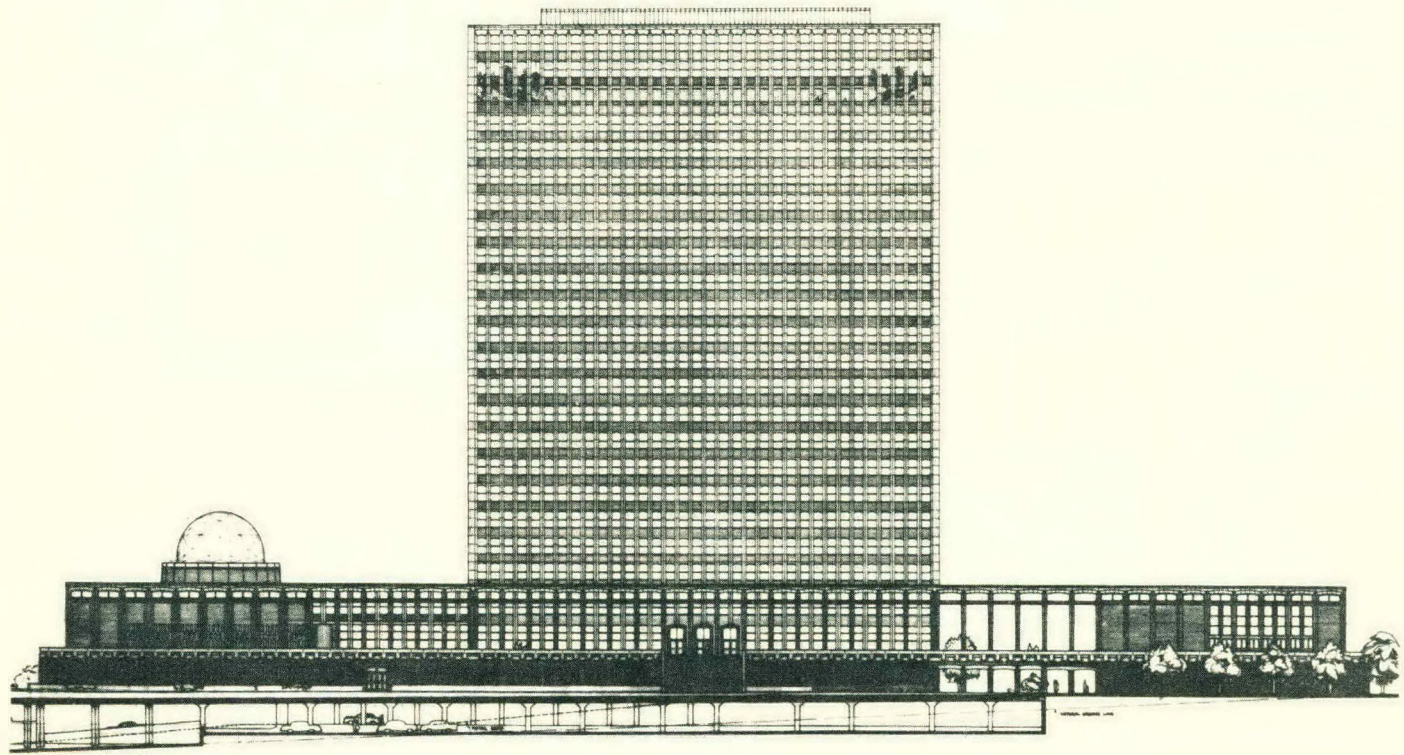
1. Main Entrance
2. Mayoral Suite
3. Licensing Court
4. City Health Department
5. Mayoral Reception
6. Council Suite
7. Public Relations Officer
8. City Health Department



TYPICAL PLAN OF TOWER

FOURTH PREMIATED DESIGN

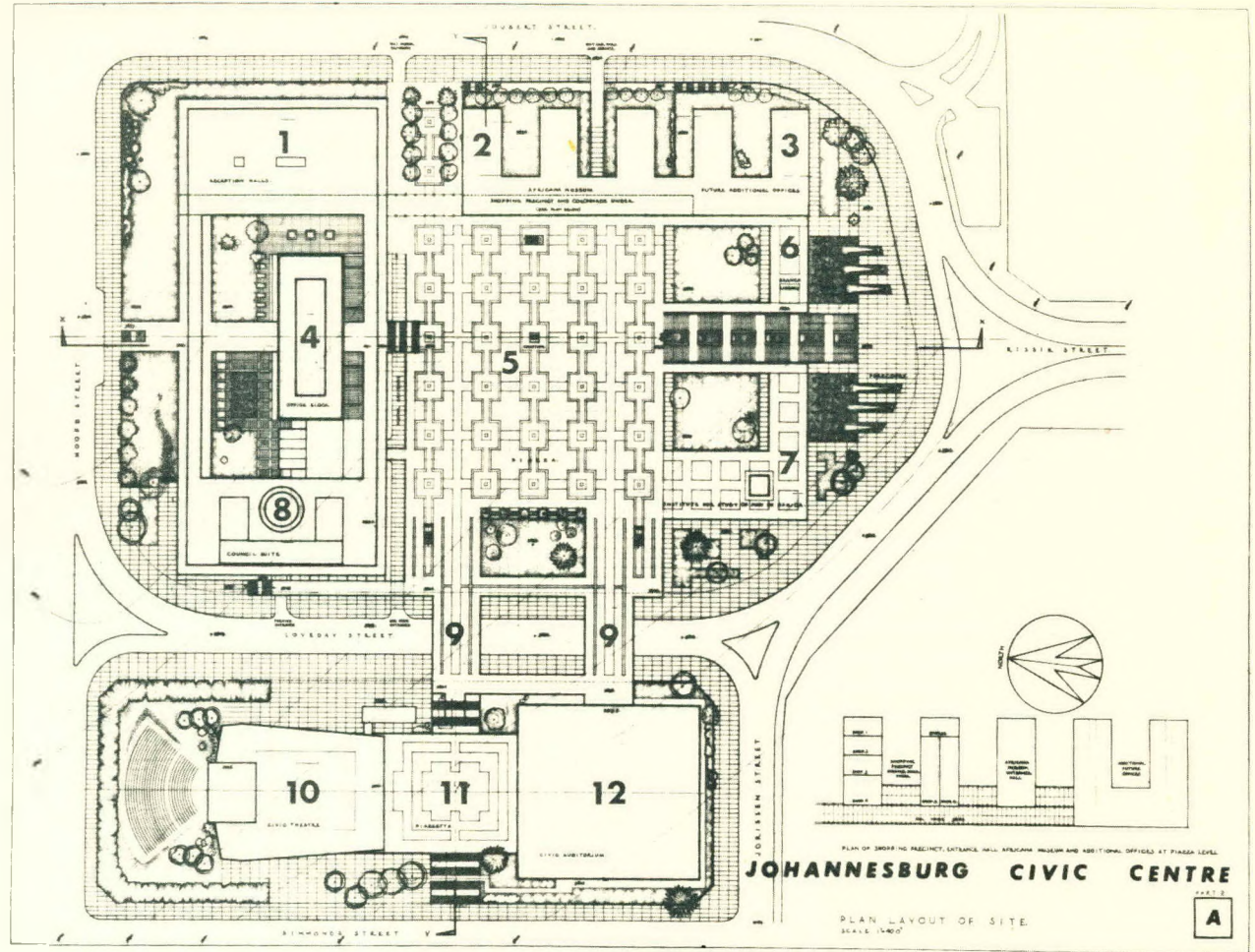
**ARCHITECTS: JACK BARNETT AND F. LAMOND STURROCK
CAPE TOWN**



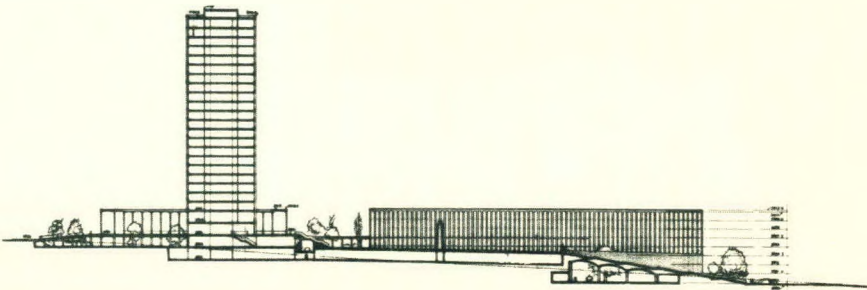
SOUTH ELEVATION

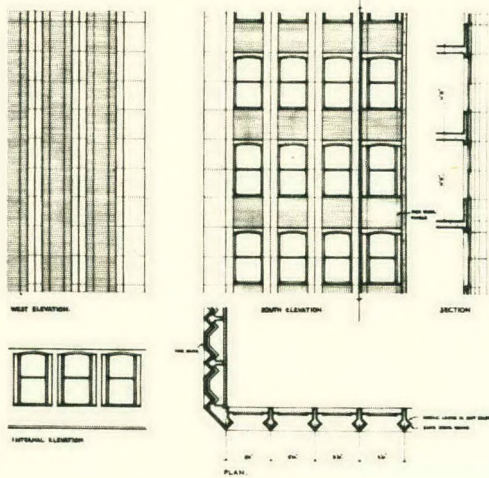
SITE PLAN **Scale 1:3000**

1. Reception Halls
2. Africana Museum (Shopping Precinct Under)
3. Future Office Block
4. Main Administration Offices
5. Piazza
6. Branch Library
7. Institute for the Study of Man in Africa
8. Council Chamber
9. Bridges over Loveday Street
10. Civic Theatre
11. Piazzetta
12. Civic Auditorium



NORTH/SOUTH SECTION THROUGH PIAZZA





GROUND FLOOR PLAN

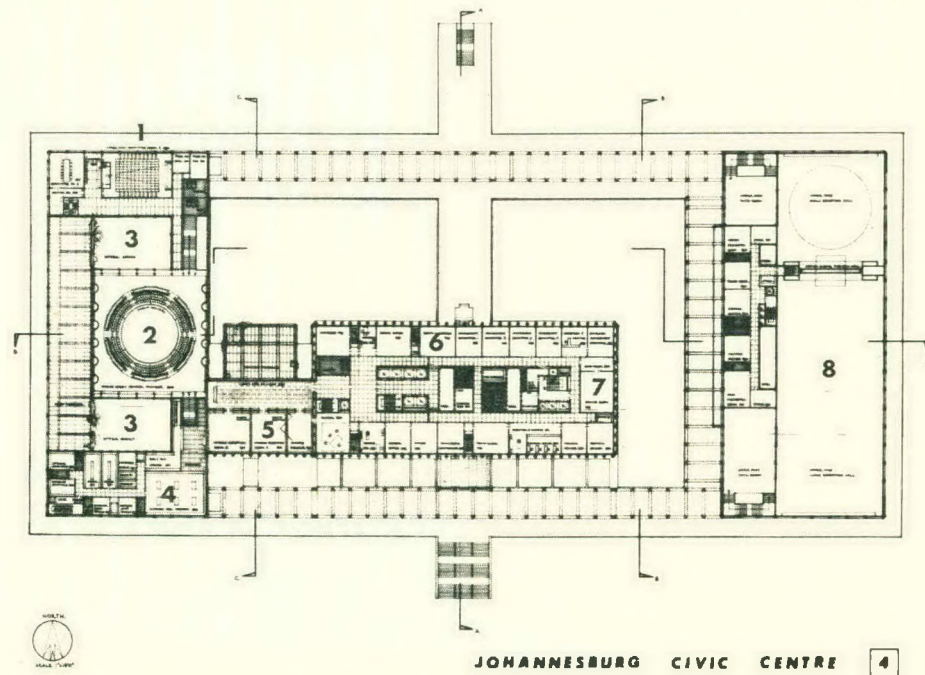
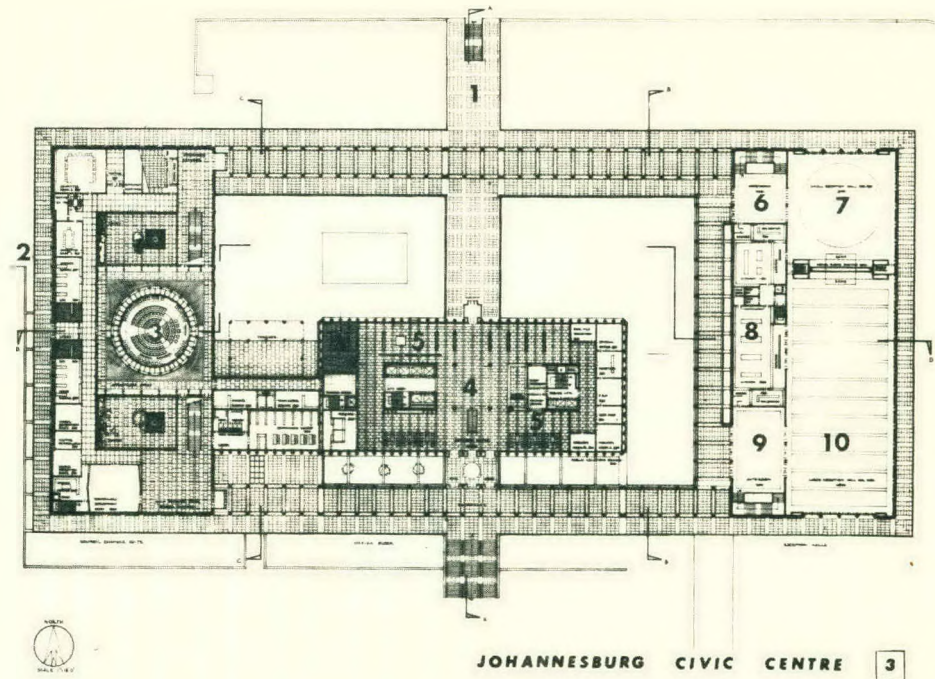
Scale 1:1500

1. Entrance
2. Council Suite
3. Council Chamber
4. Main Entrance Foyer
5. Exhibition Space
6. Ante Room
7. Small Reception Hall
8. Kitchens
9. Ante Room
10. Large Reception Hall

FIRST FLOOR PLAN

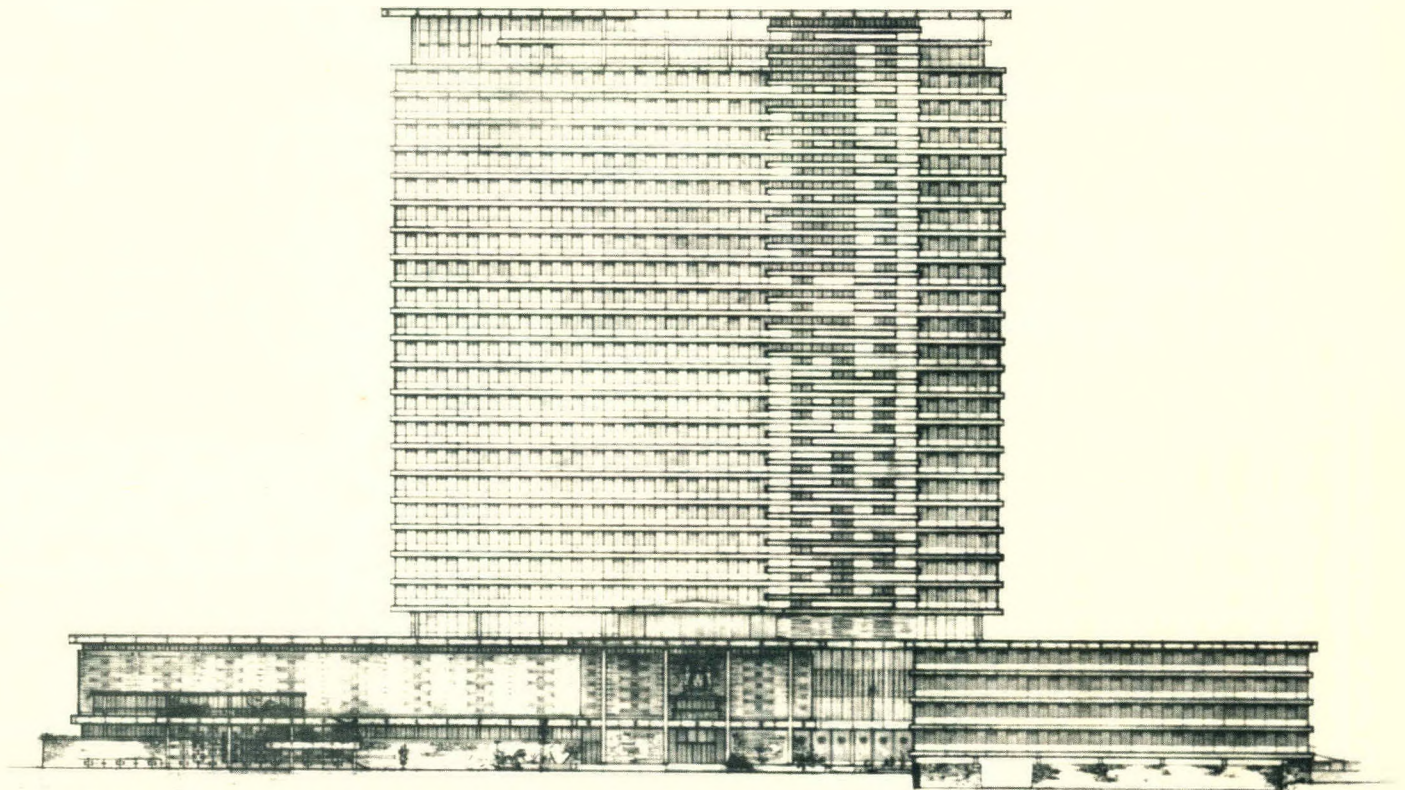
Scale 1:1500

1. Committee Room
2. Public Gallery
3. Courts
4. Kitchen and Service
5. Mayoral Reception
6. Mayoral Suite
7. Town Clerk's Department
8. Upper Part: Reception Halls



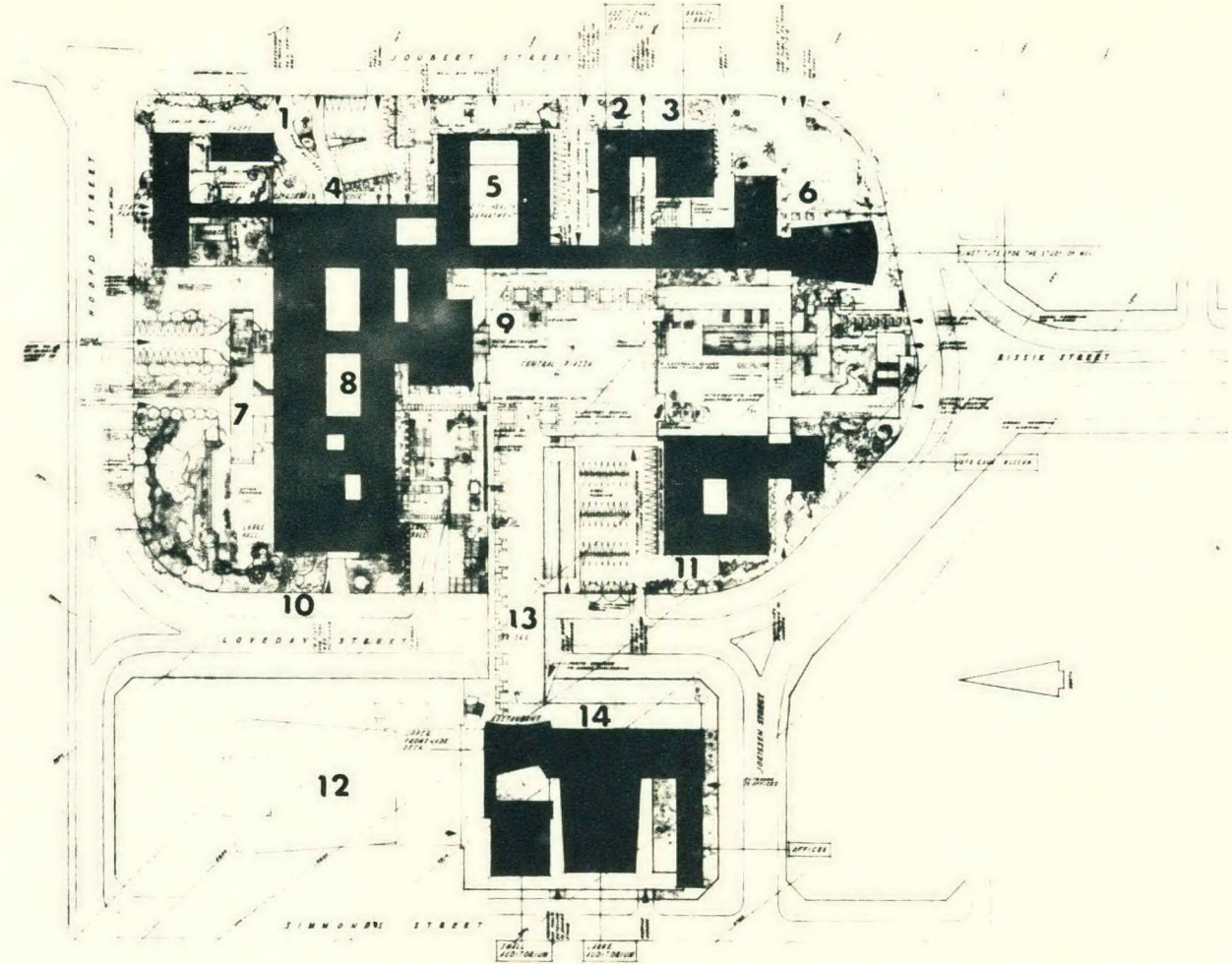
FOURTH PREMIATED DESIGN

**ARCHITECTS: MORGENSTERN AND MORGENSTERN
JOHANNESBURG**

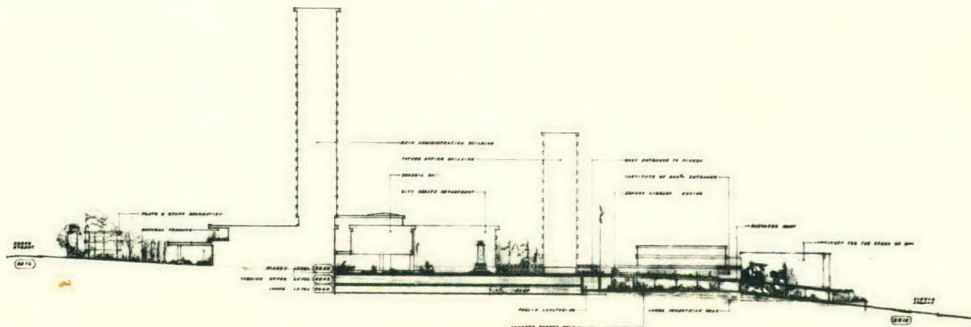


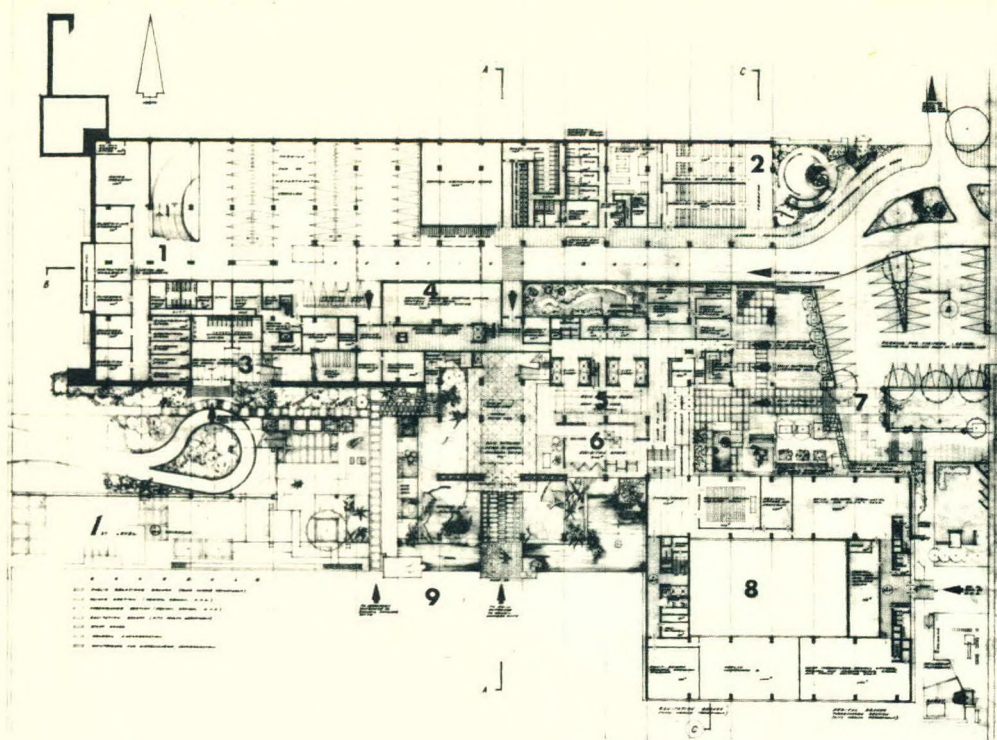
SITE PLAN **Scale 1:3000**

1. Shopping Precinct
2. Future Office Accommodation
3. Branch Library
4. Licensing Court
5. City Health Department
6. Institute for the Study of Man in Africa
7. Town Clerk's Department
8. Administrative Office Tower
9. Council Chamber
10. Reception Halls
11. Africana Museum
12. Civic Theatre
13. Bridge over Loveday Street
14. Civic Auditorium and Restaurant



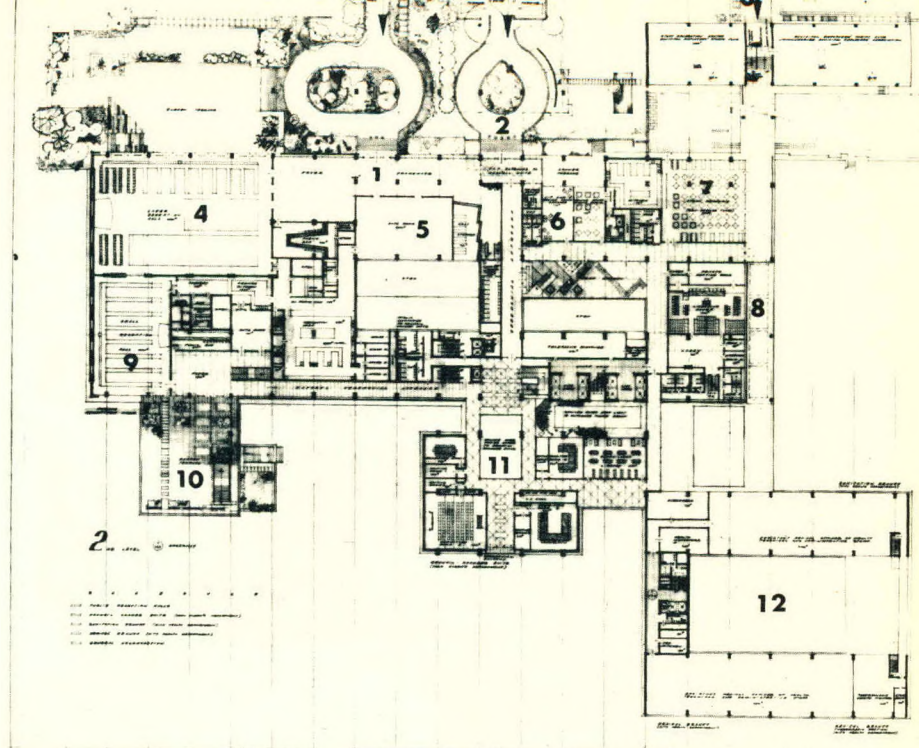
**NORTH/SOUTH SECTION
THROUGH PIAZZA**





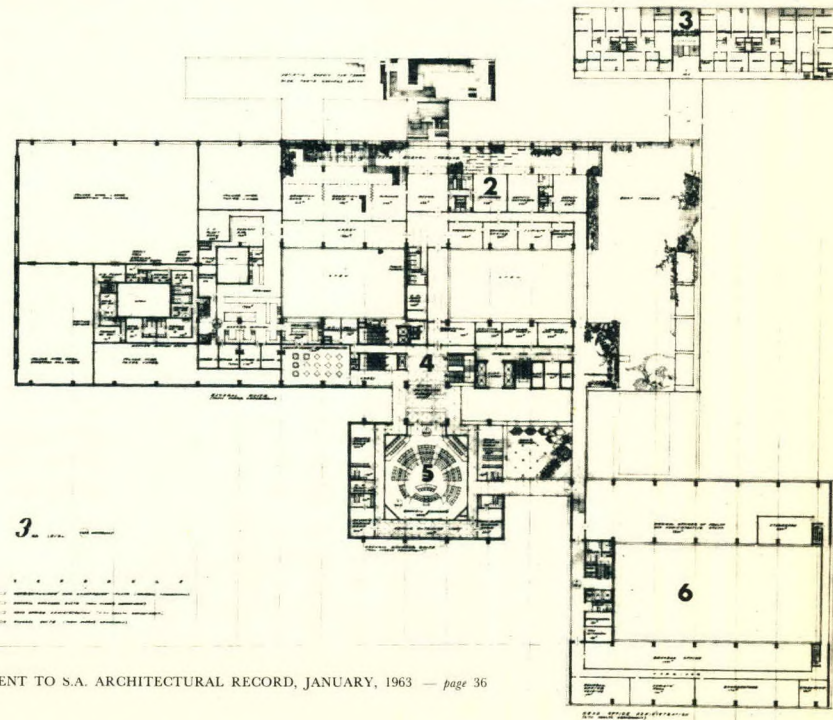
PLAN AT FIRST LEVEL
Scale 1:1500

1. Workshops and Departmental Vehicle Garage
2. Staff Cafeterias
3. Entrance: Small Reception Hall
4. Post and Parcels Delivery
5. Main Entrance Foyer
6. Exhibition Space
7. Main Entrance
8. City Health Department
9. Entrances: Council Chamber



PLAN AT SECOND LEVEL
Scale 1:1500

1. Entrance: Large Reception Hall
2. Entrance: Mayoral Suite
3. Entrance: Staff
4. Large Reception Hall
5. Ante Room
6. Senior Staff Suite
7. Staff Cafeteria
8. Licensing Court
9. Small Reception Hall
10. Garden Terrace
11. Town Clerk's Department
12. City Health Department



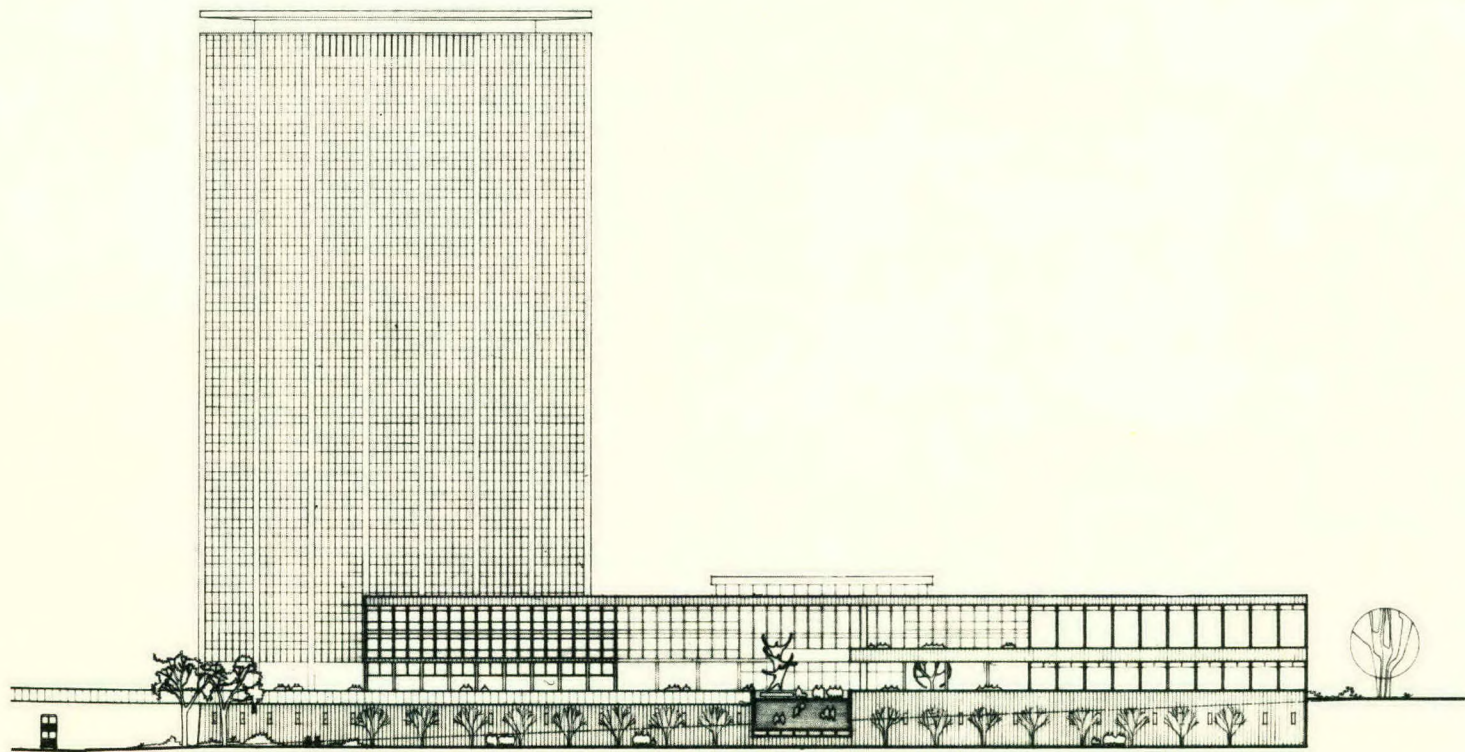
PLAN AT THIRD LEVEL
Scale 1:1500

1. Mayoral Reception
2. Mayoral Offices
3. Staff Flats
4. Town Clerk's Department
5. Council Chamber
6. City Health Department

FOURTH PREMIATED DESIGN

**ARCHITECTS: MOROSS AND GRAFF
JOHANNESBURG**

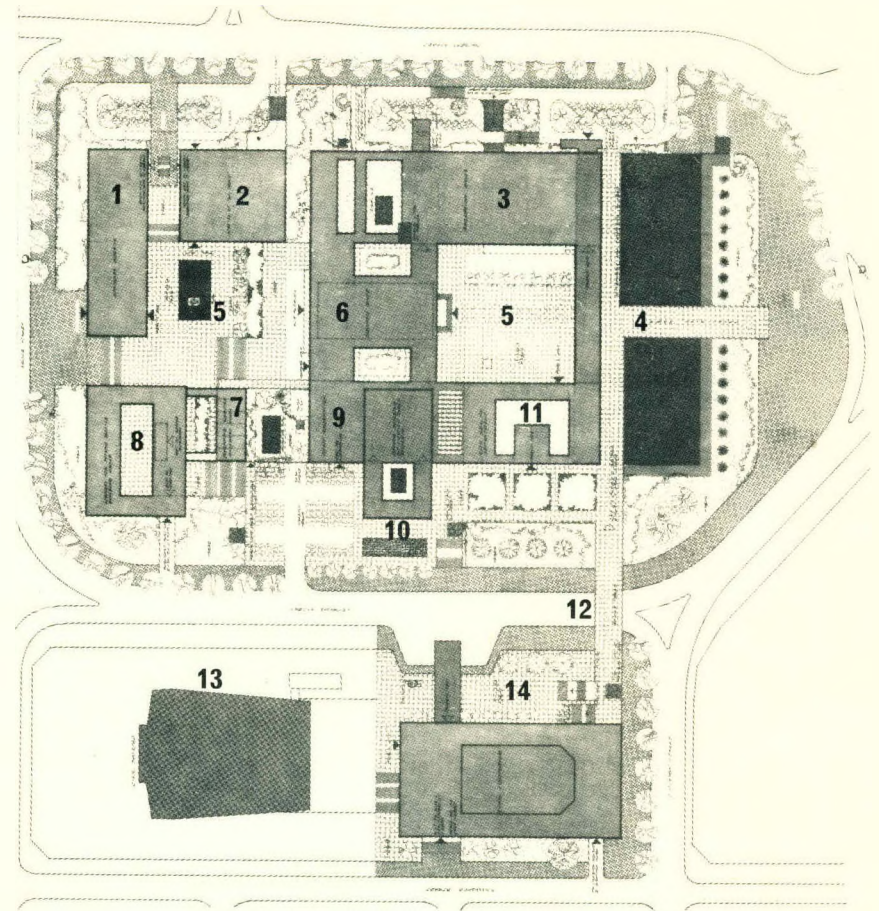
**SOUTH
ELEVATION**



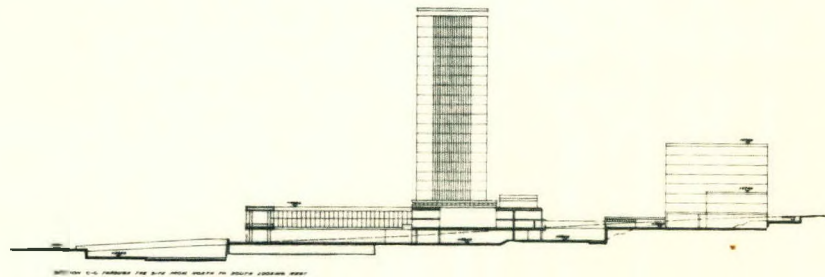
SITE PLAN

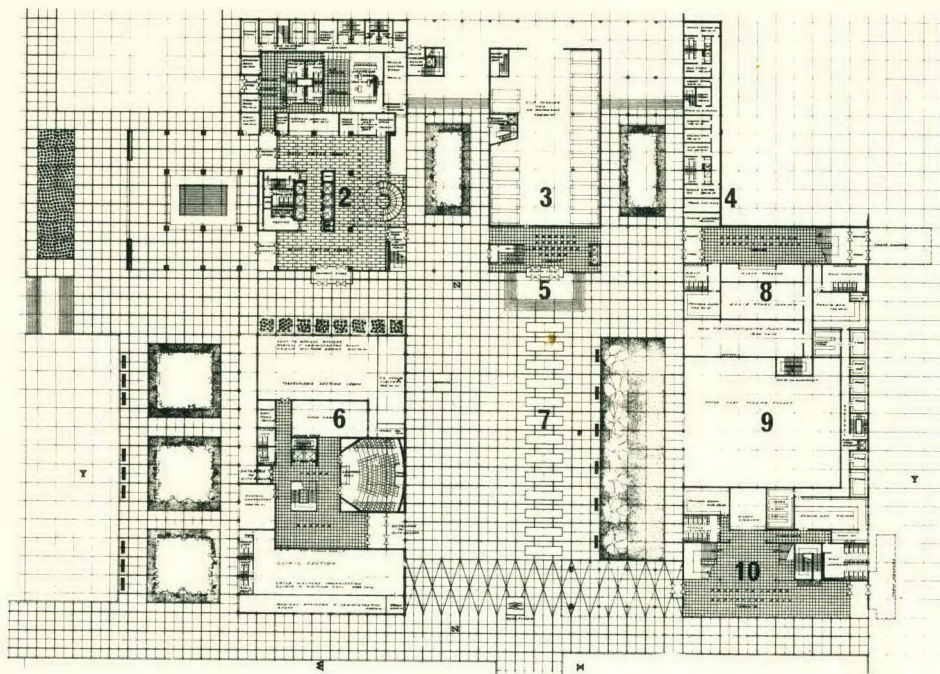
Scale 1:3000

1. Africana Museum
2. Institute for the Study of Man in Africa
3. Reception Halls
4. Pools and Fountains
5. Piazzas
6. Council Suite
7. Shopping Precinct
8. Library and Future Office Block
9. Staff Facilities
10. Administrative Office Tower
11. City Health Department
12. Bridge
13. Civic Theatre
14. Civic Auditorium



NORTH/SOUTH SECTION THROUGH PIAZZA

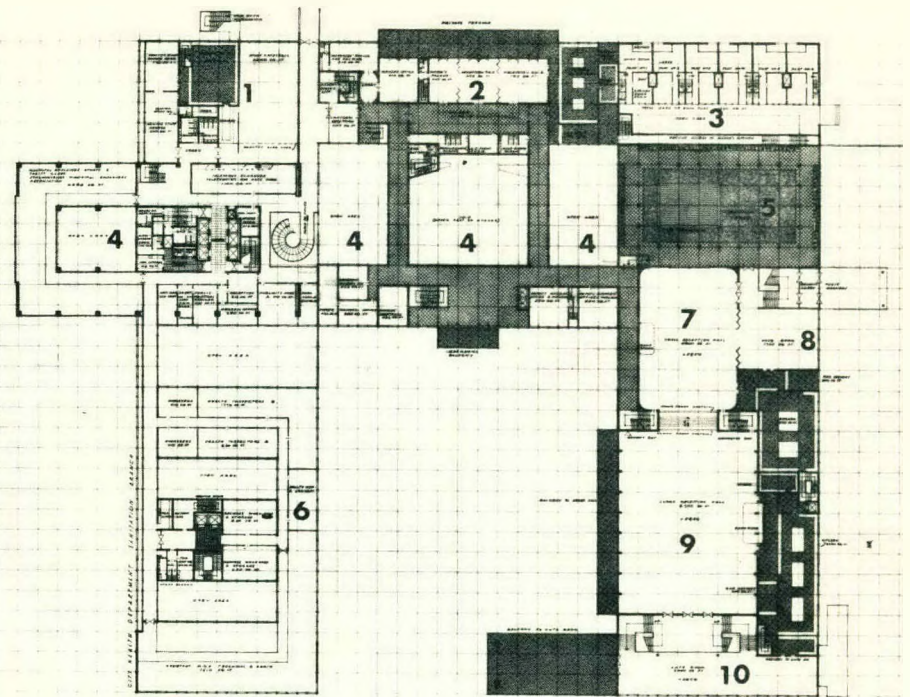




GROUND FLOOR PLAN

Scale 1:1500

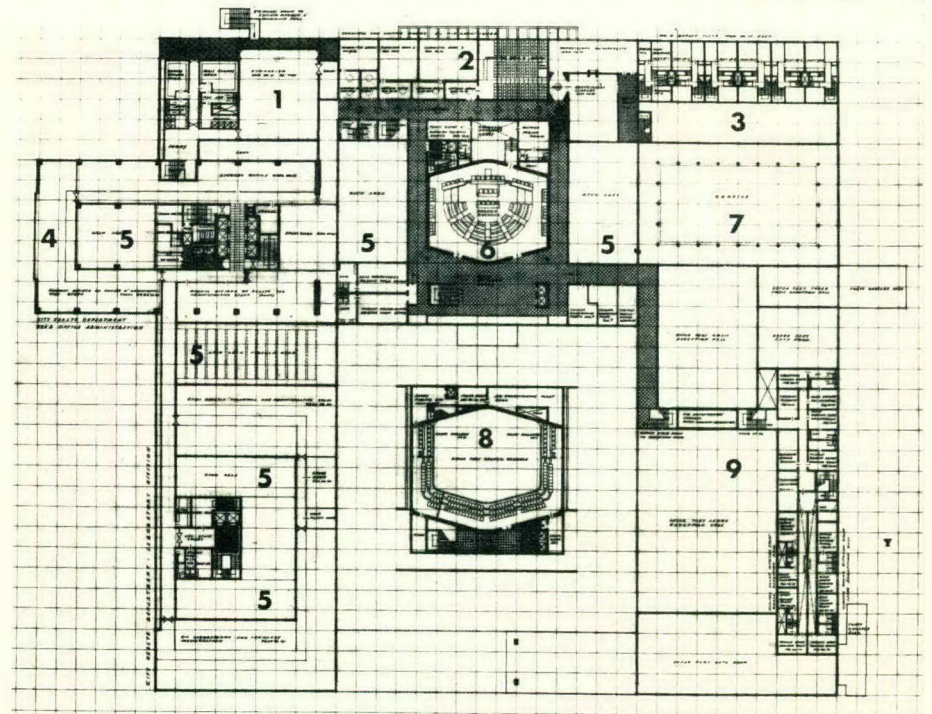
1. Licensing Court
2. Main Entrance Foyer and Exhibition Space
3. Visitors' Parking
4. Staff and Service Rooms
5. Entrance to Council Chamber
6. City Health Department
7. Piazza
8. Service Rooms
9. Upper Part of Garage
10. Entrance Foyer, etc. to Large Reception Room



FIRST FLOOR PLAN

Scale 1:1500

1. Staff Cafeterias
2. Mayoral Reception
3. Staff Flats
4. Courts
5. Piazzetta
6. City Health Department
7. Small Reception Hall
8. Ante Room
9. Large Reception Hall
10. Ante Room



SECOND FLOOR PLAN

Scale 1:1500

1. Staff Recreation
2. Council Suite
3. Staff Flats
4. City Health Department
5. Courts
6. Council Chamber
7. Piazzetta
8. Inset: Public Gallery
9. Upper Part of Reception Halls



ACKNOWLEDGMENTS

Perspective drawings on pages 8, 9, 16 & 23 by G. Alan Campbell.

Sketches of Johannesburg (1962) by W. O. Meyer:

page 2 Cullinan Building, Main Street, with the new Netherlands Bank beyond.

page 3 Public Library, front facing Market Square.

page 6 The station complex viewed across Johan Rissik Bridge with right, South African Airways terminal rotunda and offices behind.

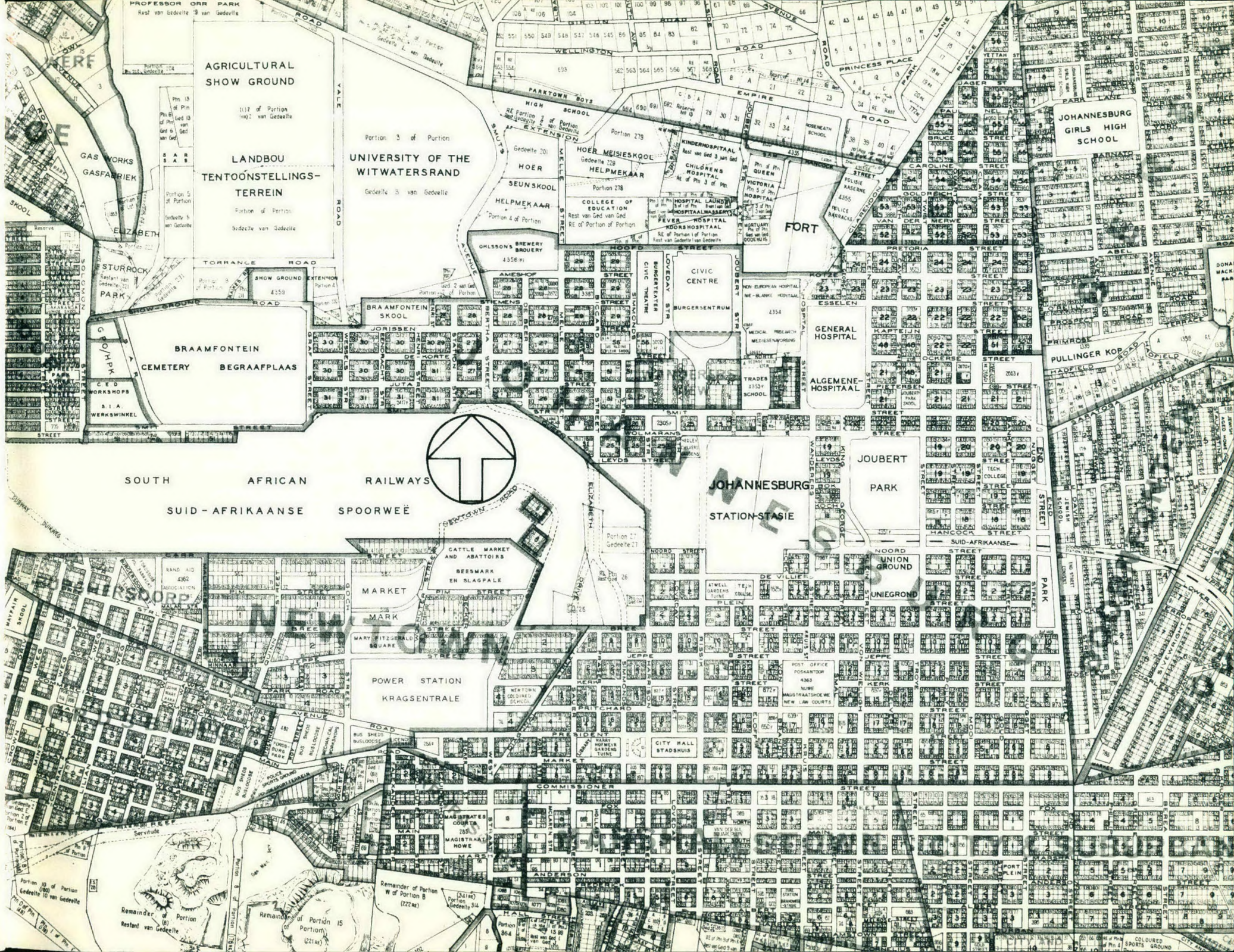
Above: S.A. Medical Research built by Sir Herbert Baker.

Below: The Lutheran Church in Twist Street.

Cover design is a montage of scenes of Johannesburg in its early days taken from records in the possession of the Africana Museum, by kind permission.

Front Inside Cover: Aerial view of the city looking south, showing the civic centre site off centre. Photo: P. G. Higgins, A.R.P.S.

Published by Sheila Baillie & Associates (Pty.) Ltd. in collaboration with the City Council, Johannesburg and printed by L. S. Gray & Co. Ltd., Glenluce Road, Glenesk.



AGRICULTURAL SHOW GROUND

LANDBOU TENTOONSTELLINGSTERREIN

UNIVERSITY OF THE WITWATERSRAND

JOHANNESBURG GIRLS HIGH SCHOOL

BRAAMFONTEIN CEMETERY

BEGRAAFPLAAS

FORT

GENERAL HOSPITAL

ALGEMEENHOSPITAAL

SOUTH AFRICAN RAILWAYS
SUID - AFRIKAANSE SPOORWEE



JOHANNESBURG STATION-STASIE

JOUBERT PARK

NOORD UNION GROUND

UNIEGROND

POWER STATION
KRAGSENTRALE

CITY HALL
STADSHUIS

COMMISSIONER'S OFFICE

MAGISTRATE'S COURTS

Remainder of Portion 10 van Gedeelte 10 van Gedeelte

Remainder of Portion 15 van Gedeelte 15 van Gedeelte

Remainder of Portion B van Gedeelte 222

COLOURED SPORTS GROUND

PIT HEAD GEAR EXY



MINING GEAR OLD STYLE



SALTPAN



PANORAMIC VIEW OF JOHANNESBURG



GOLD COMMISSIONERS RESIDENCE



PUBLIC B

Collection Number: A1132

Collection Name: Patrick LEWIS Papers, 1949-1987

PUBLISHER:

Publisher: Historical Papers Research Archive, University of the Witwatersrand, Johannesburg, South Africa

Location: Johannesburg

©2016

LEGAL NOTICES:

Copyright Notice: All materials on the Historical Papers website are protected by South African copyright law and may not be reproduced, distributed, transmitted, displayed, or otherwise published in any format, without the prior written permission of the copyright owner.

Disclaimer and Terms of Use: Provided that you maintain all copyright and other notices contained therein, you may download material (one machine readable copy and one print copy per page) for your personal and/or educational non-commercial use only.

This collection forms part of a collection, held at the Historical Papers Research Archive, University of the Witwatersrand, Johannesburg, South Africa.