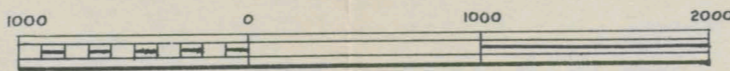


RAND LEASES (VOGELSTRAISFONTEIN) GOLD MINING COMPANY, LIMITED

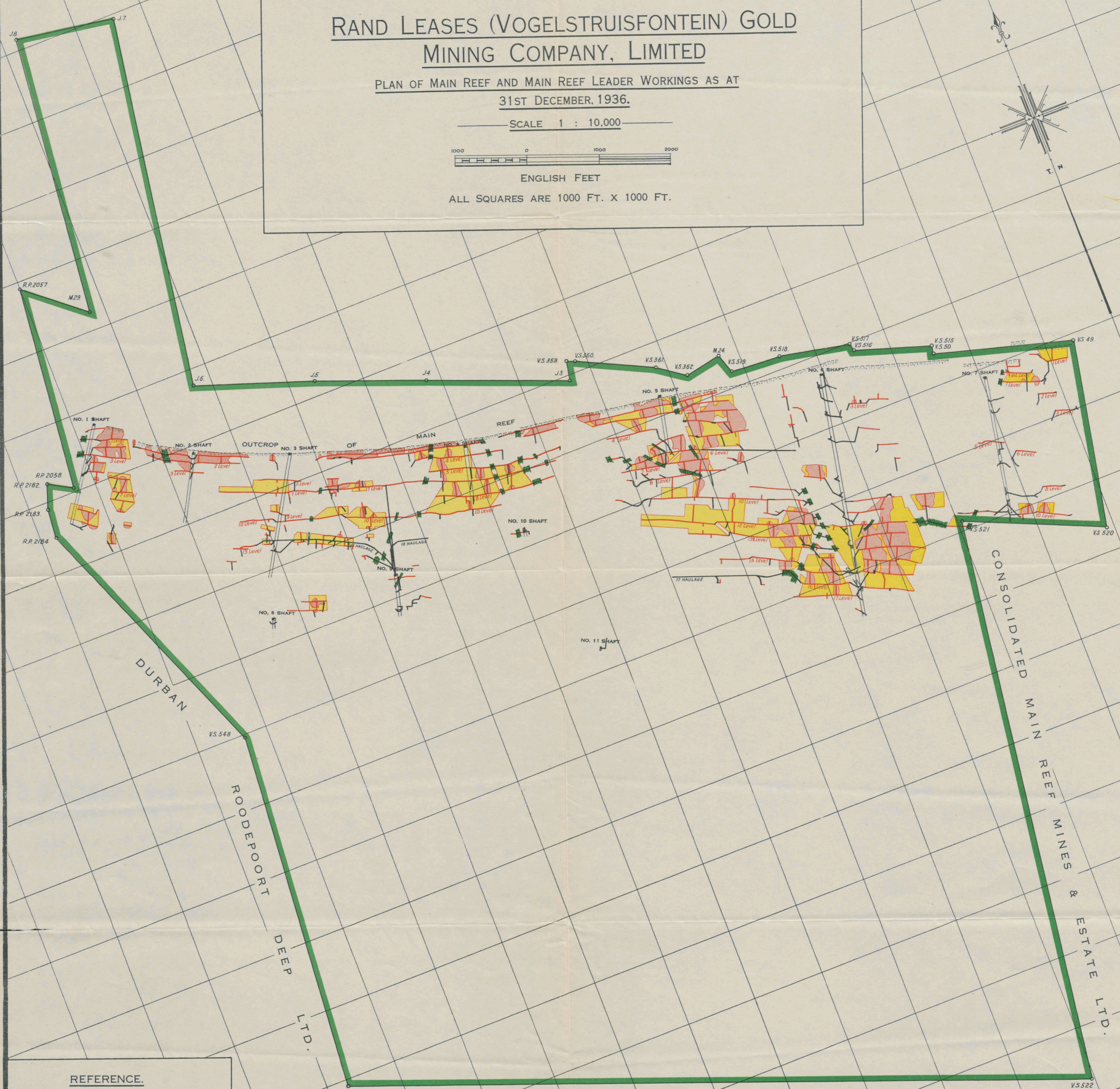
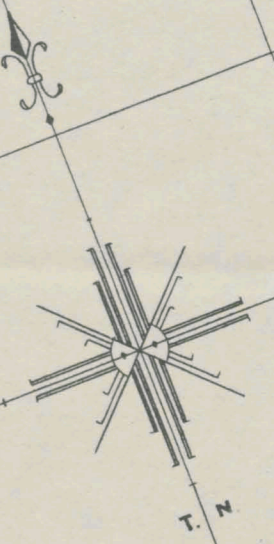
PLAN OF MAIN REEF AND MAIN REEF LEADER WORKINGS AS AT
31ST DECEMBER, 1936.

SCALE 1 : 10,000



ENGLISH FEET

ALL SQUARES ARE 1000 FT. X 1000 FT.



REFERENCE.

- Main Reef Drives and Main Reef Leader Drives —
- Drives off Reefs & X-Cuts —
- Ground Stopped ▴
- Payable Ore Reserves
- Dykes —

DURBAN

ROODEPOORT DEEP LTD.

CONSOLIDATED MAIN REEF MINES & ESTATE LTD.

KLIPSPRUIT No. 59

Collection Number: A1138

Collection Name: HUMPREYS, James Charles Napoleon, Mining papers, 1926-1967

PUBLISHER:

Publisher: Historical Papers Research Archive

Location: Johannesburg

©2014

LEGAL NOTICES:

Copyright Notice: All materials on the Historical Papers website are protected by South African copyright law and may not be reproduced, distributed, transmitted, displayed, or otherwise published in any format, without the prior written permission of the copyright owner.

Disclaimer and Terms of Use: Provided that you maintain all copyright and other notices contained therein, you may download material (one machine readable copy and one print copy per page) for your personal and/or educational non-commercial use only.

People using these records relating to the archives of Historical Papers, The Library, University of the Witwatersrand, Johannesburg, are reminded that such records sometimes contain material which is uncorroborated, inaccurate, distorted or untrue. While these digital records are true facsimiles of paper documents and the information contained herein is obtained from sources believed to be accurate and reliable, Historical Papers, University of the Witwatersrand has not independently verified their content. Consequently, the University is not responsible for any errors or omissions and excludes any and all liability for any errors in or omissions from the information on the website or any related information on third party websites accessible from this website.

This document is part of a private collection held at the Historical Papers Research Archive, University of the Witwatersrand, Johannesburg, South Africa.