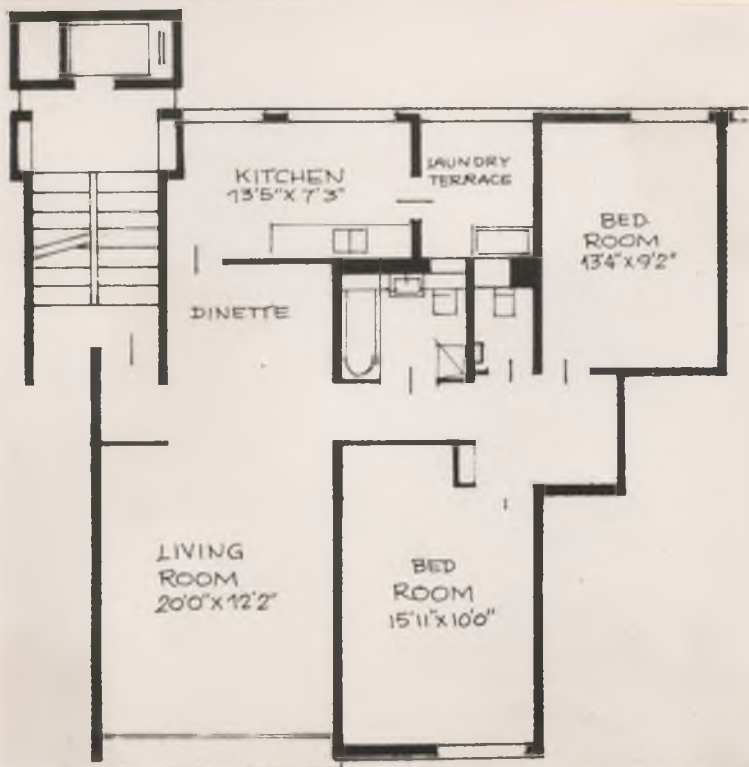


RIMON PROJECT.DESCRIPTION.

- FLOORS: 8 Floor Buildings on pillars containing 32 flats.
- EACH FLOOR: 2 Flats of 3 rooms and 2 flats of 4 rooms.
- LIFTS: 2 Staircases with 1 lift per staircase carrying 4 people and serving 16 flats. Lift stops at 8 landings with selective control down.
- FLATS: Size 93 s.m. (1001. S.ft) includes entrance hall, living room and dinette; 2 bedrooms; kitchen and eating area; Bathroom with separate shower and toilet; separate toilet; laundry terrace adjoining kitchen.
- CONSTRUCTION: Founds. R.C. piles and beams
- Ext. Walls. Gable walls 30 c.m.
- Facade Walls. 26 c.m.
- Partitions. 14 c.m. & 7 c.m.
- Ground Floor. Laundry yard; washing lines; garbage bins.
- Maintenance. As flats are sold a separate maintenance Co. is formed which will be controlled by tenants.

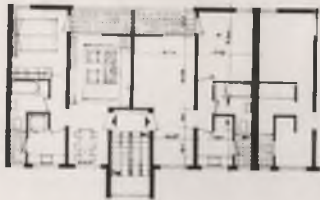
Alu34 12



A1434/2

THE APARTMENTS

Identical elements are adapted — by changing location and composition — to three different types of apartments :



TYPE 1

General area 52 sq.m. divided into living room, 1 bedroom, kitchen, dinette, toilet & shower ; front porch and kitchen porch.



TYPE 2

General area 62 sq.m. divided into living room, 2 bedrooms, kitchen, separate toilet, bathroom ; two porches as above.



TYPE 3

General area 72 sq.m. divided into living room, 2 bedrooms, dining room, kitchen, separate toilet, bathroom ; two porches as above.





PRODUCTION



Daily output of production plant - 2-3 apartments
Two production lines in plant — one for production of walls
one for production of slabs
one secondary line for stairs

WALLS are cast in precision steel molds in horizontal position. Each mold is equipped with a steam curing apparatus, thus admitting of the curing of the elements within 3-4 hours. Upon completion of the curing process the crane removes the element from the mold after lifting the latter into vertical position. Complete rendering, by mechanical floating machine, is applied to upper surface of element.



IN ITS FIRST STAGE THE PROJECT EXTENDS OVER AN AREA OF 25 ACRES AND CONSISTS OF 25 APARTMENT HOUSES OF 4 STORIES EACH, OF THREE DIFFERENT TYPES AND DIFFERENT LENGTHS. IN ADDITION, PUBLIC BUILDINGS ARE BEING CONSTRUCTED - A SHOPPING CENTRE, SCHOOLS, KINDERGARDENS, SYNAGOGUES, INFIRMARIES AND A NUMBER OF MULTI-STORY BUILDINGS.

SLABS are cast in horizontal position on steel platforms. Special space has been assigned in the plant for the installation of a battery for vertical casting of internal walls and partitions.

STOCKAGE. The elements are transferred to stockage within the area of the production plant and are put into special stands.

FACING. In stockage the facade walls are additionally treated by sand blasting, to ensure a clean, uniform exposed aggregate finish.

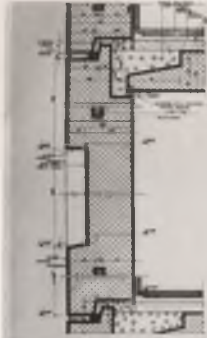
QUALITY CONTROL. The elements are controlled and certified before being moved to the erection area.



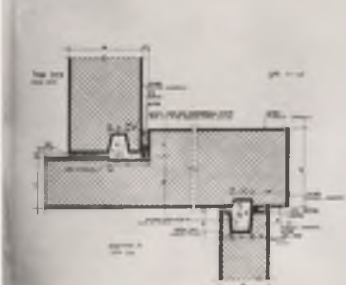
TRANSPORT. Since the plant is located within the boundaries of the construction area and the distances do not exceed 1 km, the problem of transporting the elements from the plant to the construction area is solved by the use of five platform carts of 12-20 tons load capacity each. Part of the carts carry walls in vertical position, the other part — slabs and stairs in horizontal position. A rubber-wheel mounted tractor hauls the loaded cart to the construction area and returns the empty cart to the plant for re-loading.

ERECTION

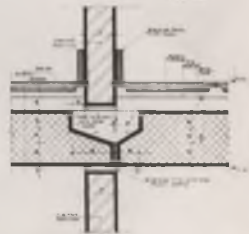
Two crews work simultaneously on erection. Each crew operates a crane of 85 ton/meters. The elements are raised from the carts, put in their respective spots and are temporarily joined by special supporting props. Thereafter the walls are straightened and levelled to maximum precision. The slabs are placed on the levelled walls. Upon completion of the placing of the elements, all joints and junctures are cast on the spot, according to specifications. The two erection crews complete 2-3 units daily.



Detail of facade element between 2 columns



Detail of joint between walls



Detail of joint between bedroom and bathroom



Collection Number: A1434

Colin Goodman Papers, 1930-1972

PUBLISHER:

Publisher:- Historical Papers Research Archive

Location:- Johannesburg

©2014

LEGAL NOTICES:

Copyright Notice: All materials on the Historical Papers website are protected by South African copyright law and may not be reproduced, distributed, transmitted, displayed, or otherwise published in any format, without the prior written permission of the copyright owner.

Disclaimer and Terms of Use: Provided that you maintain all copyright and other notices contained therein, you may download material (one machine readable copy and one print copy per page) for your personal and/or educational non-commercial use only.

People using these records relating to the archives of Historical Papers, The Library, University of the Witwatersrand, Johannesburg, are reminded that such records sometimes contain material which is uncorroborated, inaccurate, distorted or untrue. While these digital records are true facsimiles of paper documents and the information contained herein is obtained from sources believed to be accurate and reliable, Historical Papers, University of the Witwatersrand has not independently verified their content. Consequently, the University is not responsible for any errors or omissions and excludes any and all liability for any errors in or omissions from the information on the website or any related information on third party websites accessible from this website.

This document is part of a collection held at the Historical Papers Research Archive, The Library, University of the Witwatersrand, Johannesburg, South Africa.