

(CONT. FROM SEQUENCE AT END OF FILM 1)

✓ 1 A)	Star Ill. Weekly Edit.	17/3/06	Jhb. Municipality Cook-House
	" " " "	5/12/03	Native Labour Question
✓ 2 A)		a)	Registration at WNLA Compound
✓ 3 A)		b)	Natives on the way to the Rand
✓ 4 A)		c)	Natives leaving the Rand
✓ 5 A)		d)	Interior Robinson Mine Compound
Photo missing 6 A)	Star Ill Weekly Edit	12/12/03	Native Labour Question
✓ 7 A)		a)	Kaffer War Dance
✓ 8 A)		b)	Kaffer Piano
Photo missing 9 A)	Star Ill Weekly Edit		Native Women - in Victorian Dress /SERVANT ?
✓ 10A) 11A)		26/12/03	Xmas in Transvaal
✓ 12A)		"	Early Morning Market JHB
Photo missing 13A) 14A)		"	Mid-Day Market JHB
✓ 15A)	Annual Report 1936 SOPHIATOWN	15	EKUTULENI MISSION
✓ 16A)	Star Weekly Edit.	12/1/07	Newtown Market where the auction sales will be held in future (?)
✓ 17A)	" " "	26/1/07	The New Pass Office
✓ 18A)	" " "	2/2/07	Early Morning Market Saturday The typical farmers after delivering produce leaving for home.
✓ 19A)	" " "	"	Early Morning Market Saturday Selling vegetables by auction
✓ 20A)	" " "	"	Early Morning Market Saturday Going to catch the tram
✓ 21A)	Star Weekly Edit.	2/2/07	Early Morning Market Saturday Selling Hay and Straw
Photo missing 22A)			Repeat of (19) selling vegetables by auction.
(Same) 23A) 24A)			Selling potatoes at 6/- per bag
✓ 25A)	Star Weekly Edit	16/2/07	Chinese Newyear Norse Mine DRAGON FESTIVAL
✓ 26A)	" " "	"	Pagel's Circus

Photo missing

27A)

Star Weekly Edit

2/3/07

20,000 on Feb 20 in Market Sq. awaiting election results

" " "

9/3/07

The Unemployed Camp Braamfontein

28A)

a)

General view of unemployed at camps at old Showgrounds Braamfontein - a friendly Barber

29A)

b)

Married Quarters

30A)

c)

Secretary + Camp Officers + Committee

31A)

d)

The Camp Kitchen

32A)

e)

The Baker arrives

33A)

f)

Meeting in the Camp

34A)

Star Weekly Edit

2/2/07

A Gordon Drill

35A)

" " "

23/2/07

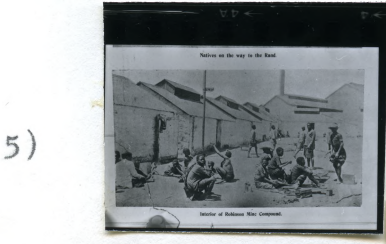
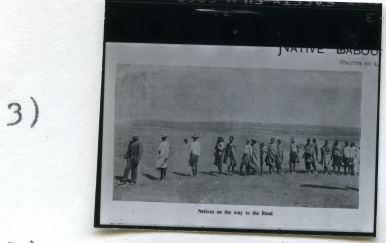
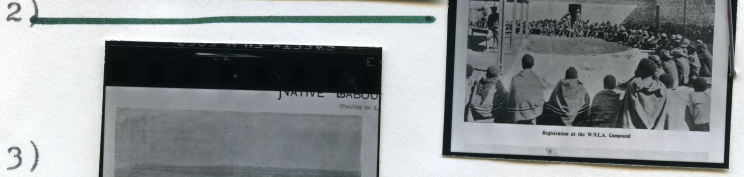
Election Day/Feb 1907 Von Brandes Polling Station

36A)

" " "

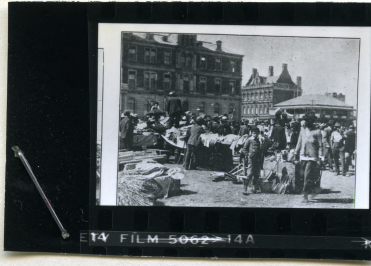
"

Some youthful followers of Mr Hay

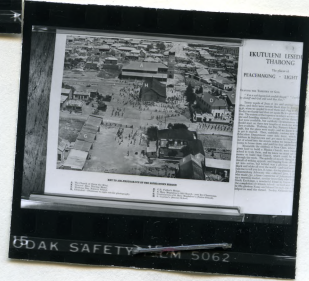


12)

13)



14)



15)



16)



17)



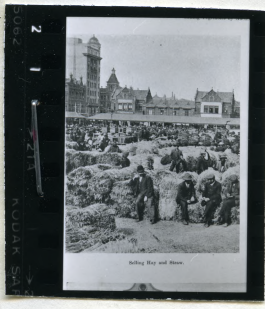
18)



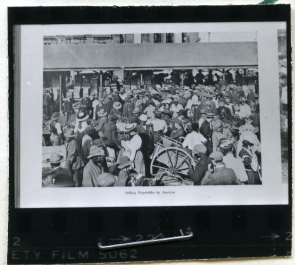
19)



20)



21)



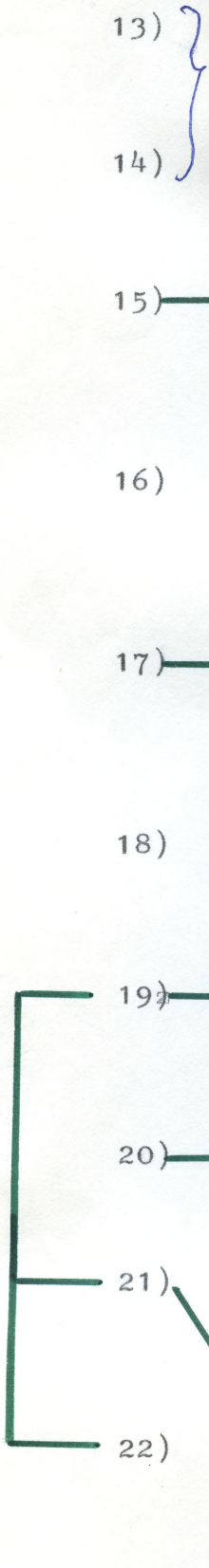
22)

23)



24)

Duplicate



25)



26)



27)



28)



29)



30)



31)



32)



33)



34)



35)



36)

