

23

TRANSVAAL MISSIONS.



JANE FURSE MEMORIAL HOSPITAL
AND
SEKUKUNILAND MISSION
(PRETORIA DIOCESE)

1928 REPORT

G 8 24

STAFF 1928.

Dr. John M. Chitty, M.R.C.S., L.R.C.P.; Mrs. Cordon, and Five Native Probationer Nurses. Rev. J. Ronald Moffatt, Superintendent, Chaplain and Secretary.

MEMBERS OF COMMITTEE.

The Right Rev. Neville Talbot, Bishop of the Diocese.
The Ven. Archdeacon H. S. Sharpe; the Ven. Archdeacon Father Hill, C.R.; the Rev. Canon W. Parker; the Rev. P. E. Kynaston; Sister Alice, C.S.M.V.; E. R. Garthorne, Esq.; Miss Macleod; Sister Elsie Katherine, C.S.M.V.

LONDON OFFICE.

The Ven. Archdeacon G. H. Cameron,
South African Church Office,
Church House, Westminster.

MISSION STAFF 1928.

Rev. J. Ronald Moffatt (Priest), Jane Furse.
Rev. Augustine Moeka (Priest), Marishane.
Mr. Ephraim Fana (Catechist), Manganeng.
Mr. Zachariah Kolibona (Catechist), Masehleng.
Mrs. Sabbath Moeka (Teacher), Jane Furse School.
Mr. John Matlejoane (Teacher), Jane Furse School.
Mr. John Mahlase (Teacher), Manganeng.
Mr. William Matloi (Teacher), Marishane.
Mr. Nathaniel Khaola (Catechist), Jane Furse.

A SUMMARY.

1 Doctor, 1 Nurse, 1 Secretary, Superintendent and Chaplain ; 5 Native Nurses, 3 Male Servants, 3 Female Servants.

16 Native Beds, 2 European, 2 Cots.

1 White Priest, 1 Native Priest, 3 Chatechists or Evangelists (at £2 monthly each), 2 School Teachers (at £2 monthly each), 2 School Teachers (paid by Government), 1 Aided School, 3 Unaided.

| | |
|---|--------|
| In-Patients | 438 |
| Out-Patients, 1,711. District 620. Total | 2,331 |
| Total attendances : Hospital 2,677. District 1,135. Total | 3,812 |
| Operations | 28 |
| Visits to Homes | 87 |
| Itinerating Trips | 94 |
| Deaths | 14 |
| Receipts | £2,670 |
| Expenditure | £2,275 |

FEES—NATIVES.

| | |
|---|------|
| Out-Patients—Interview and medicine | 2/- |
| Weekly Dressings | 5/- |
| In-Patients, per week | 10/- |

EUROPEANS.

| | |
|---|-----|
| Out-Patients—Interview and medicine | 7/6 |
| In-Patients, per day | £1 |
| Use of rondavel, 5/- per week. | |

Superintendent's Report.

Happily there is very little to comment on, as the work has gone on steadily, and fairly successfully, throughout the year.

The water supply is still meagre. The well was taken to 90 feet with no result, and had to be abandoned. It is rather sad that "expert water finders" are so confident that they guarantee results; but when there is no result, resent any naturally strongly expressed disappointment, and the expectant ones are left dry and penniless.

A BORE HOLE.

We have been waiting for a Government drill to come, but it is very very busy looking for marble fifty miles away over the Olifants River. We have prepared all that it needs, £3 10s. a day, and 22 tons of coal, and what is really humorous, we shall have to keep the water boring engine supplied with 800 gallons of water a day!

The owners of the Tavistock Mine at Witbank have given us 11 tons of coal to help, for which we thank them.

In the meantime we have had to revert to our usual custom of sending the donkey trolley to fetch 400 gallons of water for our daily use from the stream three miles away.

This should not have been necessary so soon in the season, but this seems to be a drier year than even the last two about which we have made so much fuss. The rainfall, October to January, should be about 15 inches, whereas we have had but 7 inches.

MISS GREGORY.

During Mrs. Cordon's furlough in England, we have had the great pleasure of having Miss Gregory as acting Matron. If you have a Report of 1923, you will see her in the group, as she was Matron in those far away days.

THE HOSPITAL CHAPEL.

This has become much too small for our needs, and we hope to build a little church opening out of the present chapel, but without rain we cannot make bricks, and so we are held-up for a bit. This should not cost more than about £35.

THE HOSPITAL BUILDINGS.

These will very soon need much attention, as the thatched roofs are beginning to moul. But we will wait and see what the result of the boring will be, and, if not completely satisfactory, then we shall have to reroof the buildings with iron, and get our water supply from the heavens and preserve it in tanks.

J. R. MOFFATT.

Doctor's Report.

IN-PATIENTS.

1. European—

Male 16, Female 11.

Discharged cured, 19. Discharged improved, 4. Transferred to Middelburg for Operation, 2. Died 2.

2. Native—

Male 223, Female 188.

Discharged cured, 143. Discharged improved, 226. Discharged in statu quo, 18. Went away against advice, 5. Died, 12.

Operations, 28. One native patient taken to Middelburg for operation. One native patient taken to Middelburg for X-Ray.

INCIDENCE OF DISEASES

(In-Patients Only).

Venereal Diseases, 30%

Non Specific Septic troubles (boils, etc.), 9%.

Accidents, 8%.

Phthisis and other tuberculous diseases, 7%.

Burns, 7%.

Eye Diseases, 5%.

Pneumonia, 4%.

Confinements and Diseases of Pregnancy, 3%.

Mouth Diseases (other than venereal), 3%.

Enteritis (mainly diarrhoea in childhood), 3%.

Fractures, Influenza, Removable Tumours, 2%.

Intra-venous Injection of Anti-Syphilitic Drugs (In-Patients and Out-Patients), 1,692.

OUT-PATIENTS.

New cases, 1,711 (Hospital), 620 (District).

Total of new Venereal Out-Patients (Hospital and District), 790.

Total Attendances, 2,677 (Hospital), 1,135 (District).

House Visits, 87; District Trips, 94. Vaccinations, 3,220.

The figures given above speak for themselves; it has been a busy year, but mainly one of routine work; this is inevitably so when so much of the work is against venereal disease. Still, some very encouraging results have been obtained, as it is becoming clear that, with the local population, it only requires three months' weekly injections to obtain a fully negative blood-test, from cases which are double positive on first undergoing treatment. In fact, a real campaign against the disease, carried out by means of weekly Dispensaries in the kraals, would bid fair to stamp out the disease from Sekukuniland, in the course of about 10 years.

Meanwhile, what is badly needed are two new huts, situated near the outer gate of the Hospital, where patients, who come from afar, could be lodged during their necessarily prolonged stay for treatment, without having to pay more than their usual 1/- a week. As it is, they can seldom afford 10/- per week for Hospital In-Patient treatment for 3 months, nor indeed have we room for them in Hospital: hence they simply come for one injection, and go home with a month's medicine: this may patch up their sores for a week or two, but does no real good. If, however, we could offer them "cold harbour" at the gate, I believe many would stay, or at least, the men would leave their women and children, who are the main sufferers. The cost of two such good huts and courtyards, would be about £30, and would be a really useful gift to the Hospital.

To come now to the brighter and more dramatic—but less usual—aspect of the work: one real advance has been the increasing rapidity with which accidents are brought in—this has been not a little due to a St. John's First Aid Class for the local school teachers, which has done good work for several years now. One boy, gored in the stomach by an ox, some 4 miles away, was up here within 2 hours. With a little careful washing, the protruding stomach was replaced, the wound stitched, and the boy made a complete recovery. If a few more hours had been allowed to elapse, the lad would probably have died. Again, just occasionally, they are beginning to send for help for their midwifery cases. Often these are too far gone when help arrives; but it is a sign of hope that they send, now, at all. Of course, if their rooted objection to so doing could ever be broken down, we should indeed be in a new country. Imagine how the local popularity of a big London Hospital would fall, if its Extern work were to cease! We are in the position when it has not yet begun.

Of individuals, it is difficult to single out one or two for special note, but I think, as examples of real life-saving by simple prolonged good nursing, two cases stand out. One is of a woman from Sekoati's, whose hut was struck by lightning, with herself inside, in January. She was brought up with fully one third of her whole body-surface burnt. After about 2 months she was discharged, completely cured. The other is Nkaping—still with us—and thereby hangs a tale, or rather, several tales.

Imagine a rather tired and hurried doctor, forcing Jehu (the Hospital Ambulance Lorry) at his usual ratcheting pace along the road home

from Magalies (the worst road in the district) in a vain attempt to be home by supper time, after the long Mphanama - Magalies District Dispensary trip.

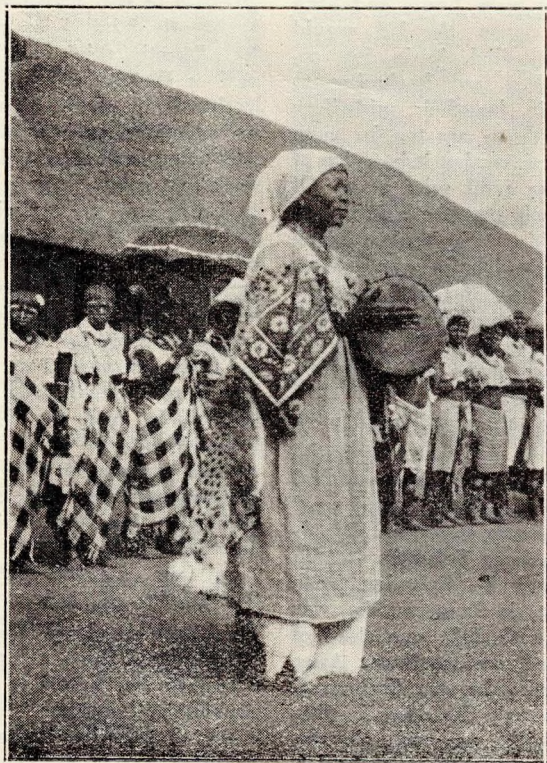
At Mohgalapa (20 miles out) the car is stopped by a man who says there is a woman sick at home. Considerable irritation of doctor at being stopped at all, and attempts to put the fellow off with a bottle of medicine. "No, you must come;" so finally, Jehu turns about and bumps away to a hut $1\frac{1}{2}$ miles off the road. There in the lapa (courtyard) lies a girl still in the native school dress, apparently dying of an appalling neglected septic thigh and knee. Obviously a Hospital case; but great objection from all the parents, friends and relations, on account of the girl still being in the 'school.' However, one's last resort, "Come to Hospital, or I give you no medicine or treatment at all," at last prevails; the end of the car is let down, and Nkaping and her mother and sister, are loaded up and Jehu proceeds warily over the bumps for the remainder of the home-journey. Once in Hospital, it is soon found that the case is one of syphilis, and the usual almost miraculous cure with intra-venous arsenic preparation follows. I doubt Nkaping will ever have a fully movable knee, but her main sores are now healed.

She still refuses to eat mutton, lest the rest of the girls in her school should get pimples on them; but she has also said she wants to become a Christian. The morals to this tale are obvious: will you pray, gentle reader, firstly, that the heathen opposition to Hospital may be broken down; and secondly, that the doctor may never lose his temper, lest he miss the next similar case.

Finally, we have several pieces of

real help to say thank you for. Firstly, to Mr. Brenning for the continued loan (rent-free) of his rondavel "on the top of the world" up on the ridge at Pokwani, also for considerable improvements he has lately made to it. Secondly, to Chief Mahamani of Mphanama, for the use of the central room in his own house, for the fortnightly Dispensary, and the promise of it weekly, when week-

ly trips can be arranged; this also is rent-free (except for a Christmas present of "the Shropshire Lad," the only available thing I had on me, in response to his urgent demand: he has promised to learn "loveliest of trees the cherry now," all through). Thirdly, but not least, to Dr. Brooke for his help in taking the doctor in locum during his holiday in April: we all hope he will come again.



The Queen of Maloyi.

The Matron's Report.

This year has brought a good many things of interest into the Diary of "Jane." In January I was able to combine holiday and attendance at the Nursing Conference; and there we made a big stride forward in getting matters re the Native Nurses on a Recognised basis. We also faced up to many questions which concerned them and us. The nice part was that secretly in our hearts we had expected opposition, but speeches by Princess Alice and others in high position, in favour of native nurses carried the day.

It is now up to us to put into practice such Training for these native girls that they may be linked up in the great nursing profession.

Sister Wells left in February. It was a big blank to me at first, as I had to shake down to a solitary life with added work, but it has not proved too much in my nine month's trial of it, and it does seem more fair where it can satisfactorily be done, to give the natives more responsibility in the work of the Hospital.

On this we increased the nursing staff up to five native probationers, and I re-arranged the order of their work to keep the five girls in training. The two most senior taking staff work and one always in Out-Patients and Dispensary.

The water drought has been a most terrible ogre to face. Day by day we were faced with difficulties as to how to make ends meet in the supply and demand; and there was always the grave risk we took in economy of water and infection, which in our case is of a virulent type. The diary recorded many gifts from kind friends in the district. One Dutch family always bring a loaf of

bread, and others both European and Dutch and native, give of their produce when in season. There are also the bigger gifts which the Treasurer will mention. The S.P.G. Bale arrived a few days before I left, with its most valuable additions to our household linen cupboard, and also many little surprises and luxuries. For this and the many other gifts we truly are grateful.

It is pleasing that our numbers show a steady increase of In-Patients and often in the latter half of the year we have been puzzled to know how to accommodate them. This means that we shall have to consider extension of buildings and more equipment. We have had some hard nuts to crack in nursing and triumphantly brought through a good few cures. Natives are not as patient in illness as one would expect from their patience in their ordinary life.

We have often to use all our tact and ingenuity to keep them to even a reasonable state of convalescence and then are often defeated. A recent case was Sannie. She came in after the birth of twins with Septicaemia—it had been a difficult case in her own home. After a week she was so persistent and had got her wagon in readiness at the gate, that we could not use our powers more to keep her.

"Longing home" is the cry that meets us on the morning round, and that cry once uttered rarely ceases until it gets its desire. So she went and we sighed and feared the worst, but in a week she was back again, little the worse and has made an excellent recovery.

It is true that their "longing home" is often a foreshadow of death, and

we have come to understand it too. When in this case it is uttered we favour their going, for they prefer to die at home, and also a death in Hospital casts a gloom not easily shaken off, and with many evil forebodings to the heathen mind. Be-

witchment is our greatest enemy, and the biggest obstacle to overcome in our work and that will only be gradually overcome as Christianity gains in power in our midst.

IDA CORDON.



Nurses' Washing Day.

The Spiritual or Church Side.

The Spiritual or Church side of this Mission is progressing. It is slow and difficult, as the Chiefs and older ones seem to have been disappointed in Christianity in some of its results as evidenced in many "who call themselves Christians." They expect it to provide and produce an altogether changed and perfect life, and when they find that many continue to do as they did before baptism, they do not think there is much in it.

It is clear that only a strictly disciplined Christianity can have any real call, and that is what we put before our hearers. A change of life, moral and physical.

The Church is against total abstinence from intoxicating drink, advocating temperance as exhibiting true self-control; but with most of the African people self-control seems only able to be obtained by actual abstinence.

They tell you that if a man starts drinking he cannot stop. Therefore, if, for his religion's sake, he is willing to give it up entirely, because he knows that he has not sufficient self-control, surely he should be permitted to do so, and should be commended for making so great an act of sacrifice and effort of will in saying "No" to the terrific temptations in his village, and of course in the Towns.

I would say that drink is the besetting sin of the African, from which most other sins arise; therefore if, to save his soul and his body, and his family, he decides to refrain altogether, why not praise him for it, and thank God?

MOOIFONTEIN OR MARISHANE.

The new Church of St. Peter is growing, and by the end of February, 1929, the walls should be finished, and by Easter the roof should be on.

The building of it has been a great witness of the Church by its members to the heathen and others, for they have given their time and labour for no payment.

Time after time people have asked them how much I pay them, and when they say "nothing," they tell them that they are being cheated, and exploited, and sweated. But they laugh back at them, tell them that they love their Church, and are building it to the glory of God.

And many a heathen has jumped down into the hole and has joined in the making and carrying of the bricks. And the big college students on holiday have entered into the game of puddling the mud.

ABOUT £300.

As far as I can estimate, £500 would be the actual cost, but the congregation, headed by the Wayfarers, has saved quite £200 in bricks and labour, so that all we need in money is about £300.

We employ one white man and one native mixer. The rest is all voluntary.

PIETERSBURG EAST MISSION DISTRICT.

It has been proposed that the superintendence of this will be added to the duties of the Sekukuniland clergy during 1929. This will entail the buying of a second hand car for Padre Moeka to get round the five or six Mission stations in reasonable time. We hope to go there alternate-

ly, month by month. That district centres in Pietersburg which is about 80 miles from the Hospital.

MOHLALETSI.

When St. Peter's, Marishane, and the Jane Furse Church have been finished, Mohlaletsi is the next one to be attended to, for the roof has fallen in, and one wall has fallen out. It will need pulling down and rebuilding entirely. We can use the old material as it is good stone, only it was built with no knowledge of building, like the one at Manganeng, which only stood for 3 years.

I should think this would cost about £40.

This place is part of the stadt of the Paramount Chief Sekukuni, and so is really rather important.

When this is completed, each of our stations will have its Church and its school, and I can then pass on, happy.

A wonderful baptism was that of an old old woman at Marishane, who, up to two years ago, when she began her preparation, was the head woman of the rites of the girls initiation schools.



A Back View.

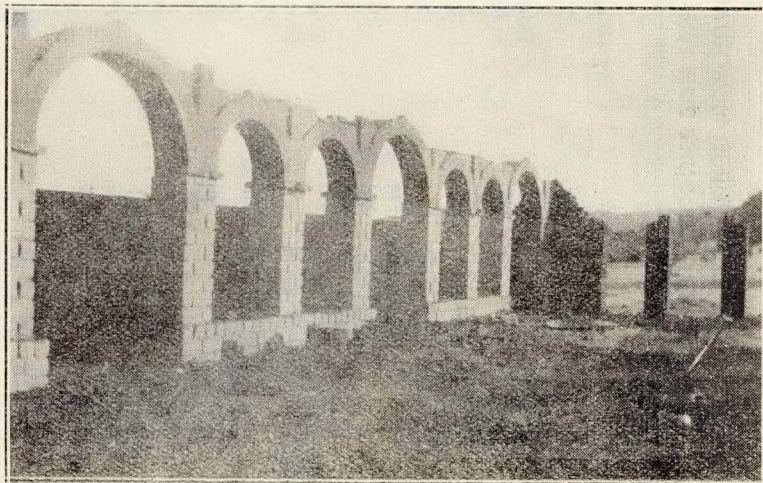
Business.

The only address is: Jane Furse Memorial Hospital, Private Bag, Middelburg, Transvaal. Anything addressed with Sekukuni, or. Secoecoënie, or Nebo on it we do not get till weeks after. MIDDELBURG is the important word.

For Goods: "Jane Furse Hospital," Middelburg. The Road Motor Service which brings our post, only

comes to us on Thursdays, though we can get our post on Mondays by sending a man $12\frac{1}{2}$ miles to take it off the bus at Nebo.

Passengers can come by Monday's bus if they will let us know on the previous Thursday, and we will meet them at Nebo. The fare is 24/- single, 48/- return. Natives, half these fares. Goods, 2/5 per 100 lbs.



The New St. Peters, Marishane.

THE JANE FURSE MEMORIAL HOSPITAL.
INCOME AND EXPENDITURE ACCOUNT FOR THE YEAR ENDED 31st DECEMBER, 1928

| EXPENDITURE. | INCOME. |
|--|---|
| <p>To Salaries and Wages :</p> <p>White Staff 407 1 8</p> <p>Native Staff :</p> <p style="padding-left: 20px;">Nursing 69 10 6</p> <p style="padding-left: 20px;">Domestic 40 15 0</p> <p style="padding-left: 20px;">Sanitation 24 16 0</p> <p style="padding-left: 20px;">Porter 32 5 0</p> <p style="text-align: right; margin-right: 20px;"><u>167 6 6</u></p> <p>„ Provisions and Fuel 273 8 2</p> <p>„ Drugs and Dressings 285 18 6</p> <p>„ Equipment and Renewals 40 18 0</p> <p>„ Furnishing Doctor's House 32 15 1</p> <p style="text-align: right; margin-right: 20px;"><u>73 13 1</u></p> <p>„ General Upkeep, Repairs and Daily</p> <p style="padding-left: 20px;">Water Supply 63 17 10</p> <p>„ Motor Car and Travelling :</p> <p style="padding-left: 20px;">Upkeep of Car 247 10 0</p> <p style="padding-left: 20px;">Dr. King half share "Maxwell" 40 0 0</p> <p style="padding-left: 20px;">General Travelling—</p> <p style="padding-left: 40px;">White Staff 43 8 2</p> <p style="padding-left: 40px;">Native Staff 17 1 9</p> <p style="text-align: right; margin-right: 20px;"><u>60 9 11</u></p> <p>„ General Expenses :—</p> <p style="padding-left: 20px;">Printing, Stationery and Sundries 44 6 9</p> <p style="padding-left: 20px;">Annual Report and Leaflets 46 8 7</p> <p style="padding-left: 20px;">Insurance 22 12 6</p> <p style="padding-left: 20px;">Audit 1927 5 5 0</p> <p style="text-align: right; margin-right: 20px;"><u>118 12 10</u></p> <p style="padding-left: 20px;">Holidays 160 11 9</p> <p style="padding-left: 20px;">Licences 14 17 6</p> <p style="padding-left: 20px;">Provident Fund 35 0 0</p> <p style="padding-left: 20px;">Furlough Fund 50 0 0</p> <p style="padding-left: 20px;">Expenses of Locum Tenens 41 15 6</p> <p style="padding-left: 20px;">Pension 9 0 0</p> <p style="text-align: right; margin-right: 20px;"><u>311 4 9</u></p> <p>„ New Buildings :</p> <p style="padding-left: 20px;">Doctor's House (Additions) ... 221 1 3</p> <p style="padding-left: 20px;">Less Refund by Doctor 70 0 0</p> <p style="text-align: right; margin-right: 20px;"><u>151 1 3</u></p> <p>„ Water Fund :</p> <p style="padding-left: 20px;">Well Sinking 106 10 8</p> <p style="padding-left: 20px;">Borehole, preliminary expenses 13 6 0</p> <p style="text-align: right; margin-right: 20px;"><u>119 16 8</u></p> <p>„ Mission Work :</p> <p style="padding-left: 20px;">Allocation, etc. 312 19 8</p> <p>„ Balance, being excess of Income over Expenditure for the year</p> <p style="text-align: right; margin-right: 20px;"><u>284 18 11</u></p> <p style="text-align: right; margin-right: 20px;"><u>£2,917 19 9</u></p> | <p>By Hospital Fees 667 4 5</p> <p style="padding-left: 20px;">Court Fees, etc 41 0 7</p> <p style="text-align: right; margin-right: 20px;"><u>708 5 0</u></p> <p>„ Donations :</p> <p style="padding-left: 20px;">Johannesburg Dio- cese 116 3 9</p> <p style="padding-left: 20px;">Pretoria Diocese 105 1 0</p> <p style="padding-left: 20px;">Other Parts of South Africa 3 7 0</p> <p style="padding-left: 20px;">From England direct 17 10 6</p> <p style="text-align: right; margin-right: 20px;"><u>242 2 3</u></p> <p>„ Transvaal Missions, London :</p> <p style="padding-left: 20px;">Hospital 890 12 9</p> <p style="padding-left: 20px;">Instruments 10 10 0</p> <p style="padding-left: 20px;">Clothing per S.P.G. 3 3 0</p> <p style="text-align: right; margin-right: 20px;"><u>904 5 9</u></p> <p>„ Car Fund, Special Ap- peal 92 3 6</p> <p style="padding-left: 20px;">Water Fund 20 10 0</p> <p style="text-align: right; margin-right: 20px;"><u>112 13 6</u></p> <p>„ Grants-in-Aid :</p> <p style="padding-left: 20px;">Union Government 200 0 0</p> <p style="padding-left: 20px;">Provincial Administration ... 237 0 0</p> <p style="padding-left: 20px;">Native Affairs Department ... 100 0 0</p> <p style="padding-left: 20px;">Native Deferred Pay Interest</p> <p style="padding-left: 20px;">Fund 25 0 0</p> <p style="text-align: right; margin-right: 20px;"><u>562 0 0</u></p> <p>„ Refunds for Travelling Expenses and District Surgeon's Fees (not including Government payment to District Surgeon) 386 18 3</p> <p>„ Refund of Insurance Premium 1 15 0</p> <p style="text-align: right; margin-right: 20px;"><u>£2,917 19 9</u></p> |

Middelburg, Transvaal,
January 30th, 1929.

H. LAVER, JR., C.A.(S.A.),
Auditor.

THE JANE FURSE
BALANCE SHEET,

LIABILITIES.

Property Account :

Donations, Contributions, etc., as per contra 4,635 0 0

Water Fund :

| | | | |
|--------------------------|-----|-----|------|
| Balance 1/1/28 | 128 | 3 | 2 |
| Receipts during the year | | 20 | 10 0 |
| | | 148 | 13 2 |
| Less Expenditure | | 119 | 16 8 |
| | | 28 | 16 6 |

Income and Expenditure Account :

| | | | |
|------------------------------|-----|-----|-------|
| Balance at 1st January, 1928 | 128 | 17 | 2 |
| Add Excess Income | | 284 | 18 11 |
| | | 413 | 16 1 |

£5,077 12 7

I report that I have examined the books of the Jane Furse and I certify that the above Balance Sheet has been drawn up that date, according to the best of my knowledge and the in-

Middelburg, Tvl.,
January 30th, 1929.

MEMORIAL HOSPITAL.

31st DECEMBER, 1928.

ASSETS.

Property Account :

| | | | |
|---|-------|---|---|
| (Less Depreciation and Sales). | | | |
| Buildings | 3,510 | 0 | 0 |
| Furniture and Equipment, Hardware, etc. | 600 | 0 | 0 |
| Medical and Surgical Equipment | 250 | 0 | 0 |
| Vehicles and Motor Lorry as per contra | 275 | 0 | 0 |
| | 4,635 | 0 | 0 |

Sundry Debtors :

| | | | |
|----------------------------|----|----|---|
| Hospital Fees | 75 | 0 | 0 |
| S.A. Railways Deposit A/c. | 6 | 13 | 0 |
| | 81 | 13 | 0 |

Mission Fund 36 4 10

Cash at Bank :

| | | | |
|------------------|-----|----|---|
| Hospital Account | 227 | 4 | 9 |
| Water Fund | 28 | 16 | 6 |
| | 256 | 1 | 3 |

| | | | |
|--------------|-----|----|---|
| Cash in Hand | 68 | 13 | 6 |
| | 324 | 14 | 9 |

£5,077 12 7

Memorial Hospital for the year ended 31st December, 1928, so as to reflect the true financial position of the Hospital at formation given me.

H. LAVER, JR., C.A.(S.A.),
Auditor.

SEKUKUNILAND MIS-
STATEMENT OF RECEIPTS AND PAYMENTS

| RECEIPTS. | | |
|-----------------------------------|----------|------------|
| To Cash in Hand 1/1/28 | 8 14 3 | |
| „ Cash at Bank 1/1/28 | 5 10 8 | |
| | | 14 4 11 |
| „ Trust Account for School | | |
| Hostels | 15 0 0 | |
| „ Trust Account for | | |
| Church Buildings | 5 0 0 | |
| | | 20 0 0 |
| „ Cash in Hospital Account 1/1/28 | | 32 16 9 |
| „ Native Contributions : | | |
| Sustentation Fund | 32 0 6 | |
| Collections | 16 19 3 | |
| Fees and Certificates | 1 14 0 | |
| Special Collections | 3 12 0 | |
| Wayfarers | 11 7 7 | |
| Burial and Coffin Guild | 0 16 0 | |
| | | 66 9 4 |
| „ Day Schools : | | |
| Government Grant | 100 10 0 | |
| School Fees | 17 13 6 | |
| Boarding Fees | 10 0 0 | |
| Sale of Books | 5 14 8 | |
| Refunds | 5 6 0 | |
| | | 139 4 2 |
| „ Transport and Car : | | |
| St. Marks, Woolston, England | 60 16 11 | |
| Refund of Mileage | 37 3 3 | |
| Sale of Old Car | 140 0 0 | |
| Sale of Mules | 20 0 0 | |
| | | 258 0 2 |
| „ Grants : | | |
| From D.F.B. for White Priest | 175 0 0 | |
| From S.P.G. for Native Priest | 100 0 0 | |
| | | 275 0 0 |
| „ General Contributions : | | |
| Diocesan Jubilee Fund | 7 15 6 | |
| Transvaal Missions, London ... | 31 4 0 | |
| Sundries | 22 3 0 | |
| | | 61 2 6 |
| „ Hospital General Funds | | 312 19 8 |
| „ Balance due to Hospital | | 36 4 10 |
| | | £1,216 2 4 |

Middelburg, Tvl.
January 30th, 1929.

SION STATEMENT.
FOR THE YEAR ENDED 31st DECEMBER, 1928.

| PAYMENTS. | | |
|--------------------------------|----------|------------|
| By Clergy Stipends : | | |
| European | 355 0 0 | |
| Native | 90 0 0 | |
| | | 445 0 0 |
| „ Native Catechists | | 63 0 0 |
| „ Church Expenses | | 16 17 5 |
| „ Buildings : | | |
| Catechist's Home | 8 14 1 | |
| St. Peter's Church, Marishane | 70 6 8 | |
| | | 79 0 9 |
| „ Schools : | | |
| Teachers' Salaries | 159 5 0 | |
| Equipment and Books | 20 1 8 | |
| Boarders | 8 0 0 | |
| Buildings | 28 12 10 | |
| | | 215 19 6 |
| „ Car and Transport : | | |
| Instalments on Old Car | 88 2 6 | |
| New Car, Part Payment | 158 0 0 | |
| Upkeep | 71 1 0 | |
| | | 317 3 6 |
| „ Sundry Payments : | | |
| Diocesan Jubilee Fund | 7 8 6 | |
| Special Collections | 3 12 0 | |
| Wayfarers | 12 5 0 | |
| C.M.N.F. Assessment | 30 0 0 | |
| Travelling | 5 19 6 | |
| Sundries | 14 18 9 | |
| | | 74 3 9 |
| „ Cash at Bank 31/12/28 | | 4 17 5 |
| | | £1,216 2 4 |

Certified a correct summary.

H. LAVER. JR., C.A.(S.A.),
Auditor.

Thanks and Acknowledgments.

We desire to thank all who help in this great work by their subscriptions and donations and grants and gifts in kind. Most of their names will be found in the lists which follow. Also we thank those who give their time, and those who pray for us.

The Diocese of St. Alban's in England helps us yearly with a large sum, the result of the offerings made at the Confirmations in their many parishes.

Both the dioceses of Pretoria and Johannesburg have this year exceeded £100 in donations. And we do not forget the children, who send us their Lent savings.

Another "thank you" goes out to the congregation of St. Mark's, Woolston, near Southampton, for they most faithfully send £60 a year towards the transport of the Priests

from station to station.

For gifts in kind such as fruit, vegetables and Christmas fare from many local friends, especially Mr. S. Gruschlawsky, Major and Mrs. Hunt, Mr. and Mrs. Yeats, Mr. and Mrs. Kuhlmann, Mr. and Mrs. Barnard, and Mr. F. W. Barnard, of White River, and Mr. Baxter.

The Rev. and Mrs. E. Herbert, for hospitality in Middelburg.

Miss Elsie Hall, the great pianist, for the proceeds of a recital given in a private house.

And to many others who have helped in various ways, such as the regular supply of the Johannesburg "Star," the "Middelburg Observer," and other papers and magazines. Also the men and women who form the committee and who meet periodically in Pretoria.

J. R. MOFFATT.



Patients.

Jane Furse Memorial Hospital.

ENGLISH CONTRIBUTIONS.

| | | | | | | | |
|--|----|----|---|---|----|----|----|
| Masters John and Geoffrey Beman | 0 | 11 | 0 | 2/6; Mrs. A. Dixon, | | | |
| Royal Air Force Collections | 12 | 0 | 0 | 2/6; Mrs. Herron, 2/6; | | | |
| Mrs. Dawson | 25 | 0 | 0 | Mrs. Warwick, 2/6; | | | |
| Miss A. Wollaston | 1 | 0 | 0 | Miss Hewitt, 2/6; Miss | | | |
| Anonymous | 0 | 2 | 6 | Urwin 2/6; Miss Pusey, | | | |
| The Hon. Mrs. Parker | 5 | 0 | 0 | 1/-; Mrs. C. Stone- | | | |
| Reydon Sunday School Collections | 0 | 15 | 6 | house, 2/6 | 1 | 3 | 0 |
| Miss R. Burchett | 1 | 0 | 0 | St. Luke's Mothers' Union. | | | |
| "Reader of St. Albans Diocesan Gazette" | 10 | 10 | 0 | Dunkinfield | 0 | 10 | 0 |
| Cirencester Missionary Association | 20 | 0 | 0 | Mrs. Thomas Marshall | 2 | 2 | 0 |
| Fulham Hospital Confirmation Collection | 1 | 0 | 0 | Per the Bishop of St. | | | |
| St. Paul's Collection, Bedford | 2 | 19 | 1 | Albans | 5 | 11 | 0 |
| "A Thankoffering" | 0 | 10 | 0 | Charles Mansfield | 1 | 1 | 0 |
| "A Thankoffering" | 2 | 10 | 0 | St. Barbara's Earlsdon | 10 | 10 | 9 |
| Jane Furse Association | 35 | 2 | 1 | St. Alban's Branch:— | | | |
| Per Mrs. Furse | 10 | 0 | 0 | Miss L. Millett, 10/-; | | | |
| "H.O." | 0 | 2 | 6 | Miss Rayner, 2/6; G. | | | |
| Miss C. E. Bucknill | 5 | 0 | 0 | Hardy, 10/-; Miss Ives, | | | |
| Miss Buck | 0 | 2 | 6 | 5/-; Miss Eaton, £1; | | | |
| Miss E. Locke King | 3 | 3 | 0 | Children's Collection, | | | |
| Miss A. M. Trist | 2 | 2 | 0 | £1 1s. 5d.; Proceeds of | | | |
| "In Memoriam L.J." | 1 | 0 | 0 | Dance, £1 6s. 2d. | 5 | 4 | 4 |
| Mrs. Halliburton | 0 | 5 | 0 | St. Paul's Bedford | 0 | 2 | 6 |
| Miss K. Fell | 0 | 10 | 0 | Oxfordshire Branch:— | | | |
| Bedford Branch | 2 | 0 | 0 | Cuddesdon Church | 0 | 5 | 6 |
| Abbey Gate House Kitchen Box | 0 | 8 | 6 | Minchinhampton Church | | | |
| Wokingham "Missionary Markets" | 1 | 2 | 6 | Collection | 28 | 0 | 10 |
| Miss Jane Abraham | 2 | 10 | 0 | Minchinhampton Children's Service | 3 | 2 | 2 |
| Hornchurch Missionary Association | 3 | 2 | 2 | St. Paul's Branch, Bedford:— | | | |
| St. Osmund's Missionary Guild, Parkstone | 12 | 18 | 8 | Sunday School Teachers' and Children's Donation, £5; Mrs. Radford, £1 | 6 | 0 | 0 |
| Miss U. Pye | 1 | 0 | 0 | Ringstead Church Week-day Collections | 2 | 2 | 5 |
| Castle Eden Branch:— | | | | Miss A. H. Murray | 5 | 1 | 0 |
| Miss Kennedy, 2/6; Mrs. Hale, 2/-; Mrs. Angus, | | | | Wangford Sunday School Collections | 0 | 2 | 2 |
| | | | | Reydon Sunday School Collections | 0 | 3 | 0 |
| | | | | Royal Air Force Collections | 15 | 0 | 0 |
| | | | | Miss Hunt and Miss D. Withycomb | 1 | 1 | 0 |

| | | | | | | | |
|--|-----|----|---|---|----|----|---|
| Mrs. Stubbs | 1 | 0 | 0 | 2nd Yarm Wolf Cubs | 1 | 0 | 0 |
| Mrs. J. C. King | 1 | 0 | 0 | The Hon. Mrs. Parker | 5 | 0 | 0 |
| Sale of Memoirs | 0 | 12 | 6 | Arthur Fyfe | 1 | 1 | 0 |
| Miss Pye | 0 | 10 | 0 | Miss P. Mann | 0 | 10 | 0 |
| Wokingham Missionary Markets | 1 | 10 | 0 | Mrs. Mann | 0 | 10 | 0 |
| St. Felix School, South- wold (Lent Offerings) | 12 | 8 | 6 | St. Michael's, Sunnyside, Berkhamstead | 24 | 0 | 0 |
| Reydon Sunday School | 0 | 6 | 2 | Biggleswade Meeting Col- lection | 3 | 10 | 6 |
| St. Saviour's, St. Albans, Missionary Association | 0 | 10 | 0 | Rev. A. G. Partridge | 0 | 5 | 0 |
| St. Paul's K.M.'s, Mirfield | 2 | 0 | 0 | Mr. and Mrs. Howard | 2 | 10 | 0 |
| Per Miss Murray | 1 | 0 | 0 | Jane Furse Association | 3 | 8 | 0 |
| Miss Unwin | 0 | 4 | 0 | Miss M. I. Sergeant | 1 | 0 | 0 |
| "J.G.S.C." | 15 | 0 | 0 | Miss A. Wollaston | 1 | 0 | 0 |
| Mrs. Davey | 1 | 0 | 0 | Mrs. Thomas Marshall | 1 | 1 | 0 |
| Sandridge Children's Col- lection | 0 | 10 | 0 | Wrentham Sunday School Collections | 0 | 8 | 0 |
| Miss M. H. Denehfield | 2 | 10 | 0 | Sir Arthur Hirtzel, K.C.B. "H.O." | 5 | 5 | 0 |
| Miss M. Marindin | 3 | 0 | 0 | Holy Trinity, Potten End | 3 | 10 | 0 |
| Misses S. and M. Pickard Hall | 5 | 10 | 0 | Mrs. Hugh Bell | 2 | 2 | 0 |
| Miss M. Sargent | 1 | 1 | 0 | "In Memoriam W.M., August 24th, 1924" | 0 | 5 | 0 |
| St. Albans Confirmation Collections | 172 | 16 | 0 | Mrs. G. B. Carlisle | 0 | 10 | 0 |
| Miss M. H. Fell | 5 | 0 | 0 | Mrs. Prentice | 10 | 0 | 0 |
| Miss G. A. Lees | 1 | 1 | 0 | Mrs. J. H. Hodgson | 0 | 2 | 6 |
| Proceeds of Bridge Drive, per Mrs. Head | 20 | 0 | 0 | Mrs. Head | 0 | 15 | 0 |
| Miss D. M. E. Sewell | 5 | 0 | 0 | Abbeygate House Chapel Box | 2 | 4 | 6 |
| Miss M. Lennard | 0 | 5 | 0 | St. Paul's, Bedford, Sale of Work, part proceeds | 22 | 10 | 0 |
| Miss M. H. Denehfield | 5 | 0 | 0 | Col. G. Vawdrey | 1 | 0 | 0 |
| James Stuckey | 5 | 5 | 0 | Hon. Madame Wiel | 5 | 0 | 0 |
| Miss C. E. Bucknill | 5 | 0 | 0 | Anonymous | 0 | 10 | 0 |
| "H.O." | 0 | 10 | 0 | Miss M. S. Denehfield | 2 | 10 | 0 |
| Miss N. Martin | 0 | 5 | 0 | Minchinhampton Church Collections | 1 | 5 | 6 |
| George L. Wood | 10 | 10 | 0 | Somerset Branch:— | | | |
| Miss M. E. Bucklow | 0 | 10 | 0 | Mrs. Crossley | 10 | 0 | 0 |
| Oxfordshire Branch:— | | | | Mrs. Field | 0 | 5 | 0 |
| Mrs. Morland | 1 | 0 | 0 | Miss Hunt and Miss D. Withycombe's Stall | 11 | 5 | 2 |
| Wokingham Sale of Work | 13 | 7 | 6 | Miss A. Gordon (1929) | 1 | 2 | 0 |
| Miss K. M. Fell | 1 | 0 | 0 | Bedford Orphanage Lent Savings | 1 | 10 | 0 |
| "G.L.W." | 0 | 10 | 0 | Reydon Sunday School collection | 0 | 6 | 2 |
| Holmes Chapel Bible Class | 0 | 10 | 0 | Mrs. Mellish (box) | 1 | 8 | 6 |
| Miss K. W. Tanner | 0 | 10 | 0 | St. Felix School, South- | | | |
| Mrs. Crossley | 10 | 0 | 0 | | | | |
| Miss Bottomley | 0 | 2 | 6 | | | | |
| Mrs. A. G. Edwards | 0 | 10 | 0 | | | | |

| | | | |
|---|-----|----|---|
| wold (collection) | 7 | 10 | 0 |
| Mrs. Rignall | 0 | 10 | 0 |
| Mrs. Meiklejohn | 1 | 1 | 0 |
| Miss Hunt and Miss D. Withycombe's Stall ... | 0 | 5 | 0 |
| St. Albans Abbey Fellow- ship | 5 | 0 | 0 |
| Dunmow Senior Child- ren's Class | 0 | 13 | 1 |
| P.C.C., Minchinhampton | 14 | 3 | 4 |
| St. Mary's, Haynes (Har- vest Collection) | 2 | 2 | 0 |
| Holmes Chapel Sunday School Class | 0 | 3 | 0 |
| Mrs. Mellish (box) | 2 | 4 | 0 |
| Oxfordshire Branch :— | | | |
| Cuddeston Church ... | 0 | 5 | 0 |
| St. Alban Confirmation Collections | 240 | 0 | 0 |
| Ashwell Week-day Col- lections | 1 | 0 | 0 |
| Sale of Literature | 0 | 3 | 6 |
| St. Paul's P.C.C., Bedford | 2 | 13 | 9 |
| Sharnbrook Children's Collection | 5 | 3 | 0 |
| Miss Jane Abraham | 2 | 10 | 0 |
| Castle Eden Branch :— | | | |
| Miss A. Kennedy, 2/6 ; | | | |
| Miss Urwin, 2/6 ; Miss | | | |
| Hewett, 2/6 ; Mrs. An- | | | |
| gus, 2/6 ; Mrs. A. Dixon, | | | |
| 2/6 ; Mrs. Herron, 2/6 ; | | | |
| Mrs. Hale, 2/- ; Mrs. | | | |
| Warwick, 2/6 ; Mrs. C. | | | |
| Stonehouse, 2/6 | 1 | 2 | 0 |
| Hockerill Sunday School | 1 | 18 | 9 |
| The late Miss M. A. C. Murray | 1 | 1 | 0 |
| Miss St. Hill | 10 | 0 | 0 |
| St. Osmund's Guild, Park- stone | 9 | 10 | 8 |
| Exchange on remittance | 1 | 13 | 6 |
| Mrs. Grillo | 0 | 2 | 6 |
| Miss A. M. Trist | 2 | 2 | 0 |
| P.C.C., Hornchurch | 16 | 3 | 6 |
| Miss U. Pye | 1 | 0 | 0 |
| Jane Furse Association ... | 13 | 15 | 9 |
| Miss B. Howard | 5 | 0 | 0 |

| | | | |
|---|---|----|---|
| St. Albans Branch :— | | | |
| Mrs. Banthree, 40/- ; | | | |
| Miss Eaton (donation), | | | |
| £1 ; Miss Ives, 15/- ; G. | | | |
| Hardy, 10/- ; Boxes, | | | |
| 8/3 ; Collection at Con- firmation, 1927, £2 1s. ; | | | |
| Ditto, 1928, £2 7s. 6d. ... | 7 | 11 | 9 |
| A. E. Black | 2 | 2 | 0 |
| St. John's Sunday School, Hartford | 1 | 1 | 0 |
| Mrs. Mellish (box) | 1 | 8 | 0 |
| Royal Air Force Collec- tions | 1 | 8 | 7 |
| St. Barbara's, Earlsdon, Coventry | 8 | 2 | 0 |

CAR FUND.

| | | | |
|--|---|----|---|
| Anonymous | 2 | 10 | 0 |
| Mrs. Jacomb-Hood | 0 | 2 | 6 |
| Miss de Crespigny | 0 | 2 | 6 |
| Miss H. S. Seymour | 0 | 10 | 0 |
| Per Miss D. Jenkyns | 1 | 0 | 0 |
| Miss Douglas | 0 | 2 | 6 |
| Miss Boothby | 0 | 5 | 0 |
| Per Mrs. Morley Wood- house :— | | | |
| (Mrs. Marmont, Mrs. | | | |
| Field, Miss Chambers, | | | |
| Miss Cameron, Miss | | | |
| White, Mrs. K. E. M. | | | |
| Patterson, Miss Horner, | | | |
| Miss Tait, Misses Lily | | | |
| and Freda Sparrow, | | | |
| Miss Manby, Mrs. White | | | |
| Pones, Mr. M. Wood- | | | |
| house, Mr. C. Ellerly) ... | 1 | 3 | 0 |
| St. Peter's Branch, Bournemouth :— | | | |
| Miss O. Saville | 0 | 2 | 0 |
| Sidmouth and Salcombe Regis Branch :— | | | |
| Miss Wight and Miss | | | |
| Tyrell | 0 | 10 | 0 |
| Miss R. Turner | 0 | 10 | 0 |
| Rev. R. W. Howard | 0 | 5 | 0 |
| St. Paul's Branch, Bed- ford | 2 | 0 | 0 |

| | | | |
|---------------------------|--------|-----------------------------|--------|
| West Stoke Branch :— | | Mr. and Mrs. H. B. Oxley | 0 5 0 |
| Hon. Mrs. Lindsay, 5/- ; | | A. Guy | 0 5 0 |
| Mrs. Soal, 1/- ; Mrs. | | Miss A. Faulkner | 0 10 0 |
| Grant, 1/- ; Mrs. Pad- | | Mrs. Tregoning | 0 10 0 |
| wick, 5/- ; Mrs. Hellyer, | | Miss Tregoning | 0 10 0 |
| 2/6 | 0 14 6 | Miss Farrow | 4 0 0 |
| Miss E. Locke King | 1 1 0 | Miss K. W. Tanner | 0 10 0 |
| Anonymous | 0 5 0 | Miss A. M. Reid | 0 10 0 |
| Dursley Branch | 0 7 6 | Anonymous | 0 3 0 |
| Masters John and Geof- | | The Hon. Madame Wiel | 1 0 0 |
| frey Bernau | 0 10 0 | Anonymous | 1 1 0 |
| St. Stephen's Branch, Le- | | Miss L. Gaitskell | 0 5 0 |
| wisham :— | | Mrs. van Hollick | 1 1 0 |
| Mrs. Folwell | 0 2 6 | Mrs. E. A. Thomson | 1 0 0 |
| W. Rose Burns | 0 1 0 | Mrs. Southwell | 2 0 0 |
| Mrs. Smart | 0 8 0 | Anonymous | 0 1 0 |
| Miss A. M. Trist | 1 0 0 | Miss E. Loch | 0 10 0 |
| Mrs. Cecil Paget | 1 5 0 | Miss Chilton | 0 2 0 |
| Mrs. Morson | 0 2 6 | Miss A. M. Rose | 0 2 0 |
| Royston Branch | 0 2 6 | Anonymous | 0 2 0 |
| Mrs. Ernest Dray | 5 0 0 | Mrs. Matthews | 0 2 6 |
| Royston Sunday School | 1 17 6 | Spencer L. Holland | 5 0 0 |
| Cirencester Sunday School | 0 1 0 | Potten End Sunday | |
| Kenn Deanery Branch :— | | School | 2 0 0 |
| Mr. and Mrs. C. E. | | Miss Close | 0 5 0 |
| Moody | 0 10 6 | Miss G. A. Lees | 0 10 0 |
| Lady Marindin | 1 0 0 | Anonymous | 0 5 0 |
| Miss C. Astel | 0 5 0 | Mrs. Colvin Lewis | 0 10 0 |
| Mrs. Brabant | 0 5 0 | Miss Whalley | 4 0 0 |
| Mrs. Herbert Gibson | 0 15 0 | Lighthorne and Chester- | |
| Rev. N. Miller | 0 4 0 | ton Mothers' Union | 0 10 0 |
| Anonymous | 2 0 0 | Mrs. Head | 2 0 0 |
| Anonymous | 0 10 0 | Miss K. F. Smith | 0 5 0 |
| Shenlybury House, Shen- | | J. M. Kay Harrison | 0 10 0 |
| ley | 0 10 0 | Miss N. K. Alexander | 1 0 0 |
| Miss A. Greaves | 0 5 0 | Mrs. Savory | 1 0 0 |
| Anonymous | 5 0 0 | Miss M. R. Awdry | 0 5 0 |
| Miss Burchett | 0 10 0 | Anonymous | 4 0 0 |
| Rev. W. French | 0 10 0 | Anonymous | 0 5 0 |
| Miss Monro | 1 0 0 | Miss M. H. Debenham | 5 0 0 |
| Miss E. C. Gregory | 2 10 0 | Anonymous | 2 0 0 |
| Mrs. Hudson | 0 5 0 | St. Mark's, Leicester (Box- | |
| Mrs. Ernest Hankey | 2 0 0 | es and Collections) | 0 15 0 |
| W. Rose Burns | 0 1 0 | Kenn Deanery Branch : | |
| Miss U. M. Pye | 1 1 0 | Anonymous | 0 2 0 |
| Mrs. Wood Jones | 0 10 0 | | |
| Lady Emma Talbot | 1 0 0 | | |
| Mrs. and Miss Walker | 5 0 0 | | |

WATER FUND.

| | |
|--------------------------|---------|
| Mrs. Smart | 0 8 0 |
| Kenn Deanery Branch:— | |
| Anonymous (Dawlish) | 10 0 0 |
| Miss Dibdin | 0 10 0 |
| Miss E. R. Bazley | 10 0 0 |
| Miss G. A. Lees | 0 2 6 |
| | <hr/> |
| | £21 0 6 |

INSTRUMENTS FUND.

| | |
|------------------------|---------|
| Mrs. Gwynne Vevers ... | 10 10 0 |
|------------------------|---------|

CLOTHING FUND.

| | |
|-----------------------|---------|
| Per Mrs. Furse | 3 15 0 |
| The Hon. Madame Wiel | 3 3 0 |
| | <hr/> |
| | £6 18 0 |

DONATIONS AND SUBSCRIPTIONS RECEIVED IN SOUTH AFRICA.

Pretoria Diocese.

| | |
|--|--------|
| Native Girls' Hostel, Pretoria | 1 1 0 |
| Children of "The Kingdom" Lent Savings ... | 40 0 6 |
| Holy Cross, Irene | 2 8 4 |
| St. George's Guild, Premier Mine | 2 2 0 |
| Hospital Chapel Box ... | 2 1 0 |
| English Church, Roberts Heights | 15 0 0 |
| Church of the Good Shepherd, Pretoria | 0 5 2 |
| St. Saviour's, West End, Pretoria | 2 2 0 |
| Holy Name, Railway Reserve, Pretoria | 1 0 0 |
| Nylstroom | 2 5 0 |
| Half Proceeds Concert, Witbank (Mrs. H. Laver, Junior's Company) ... | 21 0 0 |
| Sister Wimble, Barretts | 0 10 0 |
| J. Nieuwenhuize, Esq. ... | 5 0 0 |
| Miss F. Hartley | 0 7 0 |
| Anon. | 0 3 0 |
| S. Gruschlawsky, Esq. ... | 7 10 0 |

| | |
|-------------------------|----------|
| Mr. and Mrs. Walker ... | 2 0 0 |
| Anon. | 0 6 0 |
| | <hr/> |
| | £105 1 0 |

Johannesburg Diocese.

| | |
|--|---------|
| Good Shepherd Home ... | 1 12 0 |
| St. Mark's Coloured Mission, Krugersdorp | 1 1 0 |
| St. Agnes School for Native Girls, Rosettenville | 1 8 6 |
| C.R. Native Congregation's Good Friday Collections | 3 7 9 |
| Proceeds K.M. Sale, Benoni | 20 0 0 |
| Proceeds Concert given by Miss Elsie Hall at Mrs. Healeys | 40 17 6 |
| St. Michael's, Boksburg, Special Effort | 8 6 10 |
| St. Luke's, Orchards | 3 5 6 |
| St. Peter's, Melville | 0 10 10 |
| St. Augustine's, Brixton | 0 2 0 |
| St. John's Zeerust | 1 2 6 |
| St. John's Rooodepoort ... | 0 16 8 |
| St. John's Vereeniging ... | 0 3 10 |
| St. Dunstan's Benoni ... | 0 9 0 |
| St. Michael's, Bezuidenhout Valley | 0 13 0 |
| St. John's, Belgravia | 1 13 3 |
| Sts. Peter and Paul, Springs | 0 8 8 |
| St. Patrick's, Cleveland ... | 3 12 9 |
| All Saints, Booyens | 0 5 0 |
| St. Mary's, Rosettenville | 0 10 8 |
| Kensington Sunday School | 1 1 0 |
| Heidelberg Sunday School | 1 1 0 |
| Ermelo Sunday School ... | 0 14 0 |
| All Saints, Clifton | 0 9 9 |
| St. Michael's, Maraisburg | 1 1 0 |
| St. Cyprian's, Johannesburg | 4 4 9 |
| Canon W. Parker | 3 0 0 |
| John Coombs, Esq. | 0 10 0 |
| Miss Elizabeth Johannes | 0 14 0 |
| Mrs. J. Hadfield | 1 1 0 |
| A. Trunmer, Esq. | 1 0 0 |
| Barnato Group of Mines | 10 10 0 |

A. Victor Murray, Esq. ... 0 10 0
 £116 3 9

Other Parts of South Africa.

Margate Collections, per
 Rev. G. T. Carlisle ... 4 5 0
 Mrs. White, St. Barnabas,
 Cape Town ... 4 1 0
 W. Elliott, Esq., C.P. ... 4 1 0
 £3 7 0

England.

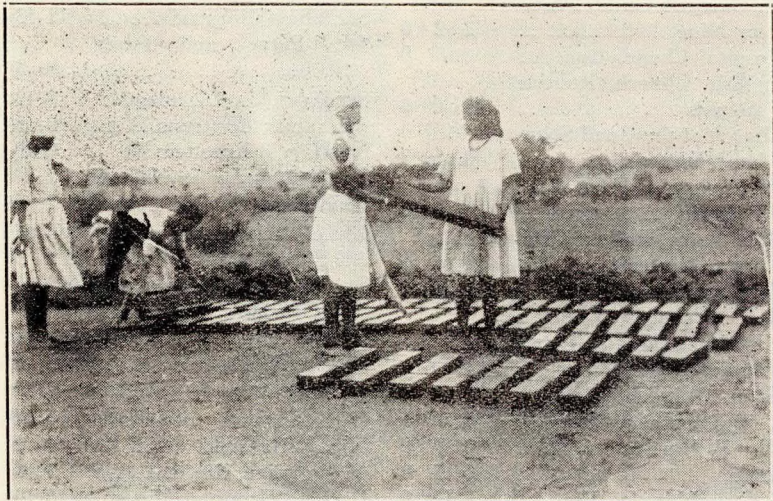
St. Stephen's, Gloucester
 Road Missionary Association ... 3 0 0
 Rev. J. C. M. Chitty ... 6 0 0
 Mrs. G. E. G. Chitty ... 2 2 0
 Miss Mary Chilton ... 0 2 6
 Yockleton Village ... 2 5 0
 Mrs. A. C. Matthew ... 4 1 0
 Mrs. A. M. Watson, Mis-
 sionary Working Party,
 Leighthorn, Warwick ... 3 0 0
 £17 10 6

SEKUKUNILAND MISSION.

Miss Randolph ... 0 10 0
 Captain O. Wakeman ... 5 0 0
 Anonymous ... 20 0 0
 St. Albans Branch:—
 Miss Ives ... 0 10 0
 For School Roof (Man-
 ganeng) ... 1 7 6
 £27 7 6

Sekukuniland Transport.

St. Mark's, P.C.C., Wool-
 ston ... 60 0 0
 Per "Cowley Evangelist" S.S.J.E.
 For Special Purposes
 (Marishane Church).
 Per Fr. Adams ... 0 5 0
 Miss Fuller ... 3 3 0
 The Misses Walton ... 0 10 0
 E.M.G. ... 5 0 0
 Anon. ... 5 5 0
 St. Peter's, Balsall Com-
 mon ... 0 12 6
 In collection, 8/12/28 ... 0 10 0
 Per Westminster Bank,
 Hastings ... 25 0 0
 £40 5 6



A Heathen helping a Christian.

SEKUKUNILAND

Wayfarers & Sunbeams



1931 has been a year of progress and promotion, as will be seen by the calendar of events.

There have been some outstanding visits, and in between time, regular meetings—the Sub-leaders being excellent in taking their share of responsibility, teaching 2nd Step, taking meetings, etc. All have worked together well, with very few disappointments.

It has been an expensive year, re-outfitting Wayfarers and getting two Detachments of Sunbeams into new blue uniforms. We have relied too much in the past on the kindness of friends in providing funds—for which we are most grateful—but we are now thinking out how we can raise a little ourselves—a concert and a monthly penny (or egg!) subscriptions are possible suggestions, but our people are poor.

The girls are encouraged to do their own native work—grass mats, clay pots, bead work, etc., which can be sold in aid of funds, and a small start has been made in this. Some have also been doing simple Church needlework which we hope to give to a poor mission station.

We are very thankful that Wayfarers are starting in two more places in the District—at Schoonoord, under the leadership of Mrs. Button, wife of our new Commissioner, and at Pokwani under Sub-Leader Perpetua Legodi, with an occasional visit from here.

We are very proud of one of our nurses and Sub-Leaders. Nurse Hilda Phophi, who is now doing clinic work at her home in Sibasa, N. Transvaal among the Bavenda people, and has started Sunbeams and will have Wayfarers soon. She is doing a fine work.

Three Wayfarers have died this year. Two at Marishane, Lydia and Alicina, and Nurse Mabel Mochubi, recently promoted Acting Sub-Leader. We miss them of course, but are sure they are still near us, only having gone a step further along the Upward Way. We were proud to honour our

Sisters by making a Guard of Honour of Leaders, Sub-Leaders and Groupers, and our beautiful Wayfarer Flag was laid on the coffin of each.

Very faithful missionary work has been going on throughout the year—a new development being the opening of two night schools—and Wayfarers have been going to teach the heathen boys and girls attending them every night after their day's work.

We are very sorry to have to say goodbye to Major and Mrs. Hunt on his retiring from being Native Commissioner. They have been very good friends to us ; Mrs. Hunt served on the Wayfarer Committee and we are very grateful for all their help and encouragement, and hope they will still remember us sometimes.

ALTHEA WOLLASTON (*Leader*).

Events of the Year.

January 21 & 22. Mrs. Rheinallt Jones' visit. She saw all Detachments. S/L Sophina Makena promoted Acting-Leader (made full Leader in August). Agnes Mogoba and Julia Matlejoane, full S/Ls, and five others made Acting S/Ls, and these have earned full sub-leadership during the year. Mrs. Jones formed a new Senior Detachment (Tvl. 12) and a S/L Training Detachment (Tvl. 3) for S/Ls and Nurses.

April. Visit from Miss Dorothy Maud, E. Skinner and E. Middleton. They saw all Detachments and we gained much inspiration and learnt many new games. Tvl. 3 did impromptu charades on the Health Laws.

May. Mrs. McLees and Mrs. Cowgill (Middelburg Wf. Leaders) came up to see us. They enrolled Tvl. 11, a Junior Detachment, and visited Mooifontein.

June. Pathfinder and Wayfarer Rally in Johannesburg in honour of Lord and Lady Baden-Powell. We were unable to take part.

June 26-28. Wayfarer Camp and Missionary Rally at Jane Furse School—56 present. Sports and Feast. In the afternoon we invited 120 heathen girls (night scholars from Chief Kgolokoe's kraal) to play games with us. We marched out there on Sunday for a mission Service.

October 17. Reception by Mrs. Saul Solomon in Johannesburg for Wayfarer Leaders and S/Ls to welcome Lady Clarendon. We were unable to go, but sent greetings from Sekukuniland, and 17/- towards "Our Children's Day" Collection.

November 11 & 12. Mrs. Rolfe's visit. A great welcome from old friends. Visited Mooifontein, Manganeng and Jane Furse Wayfarers and Sunbeams. She enrolled Wayfarers and Sunbeams in all places; presented many Southern Crosses and Service Stars, 2nd Steps and Proficiency Badges. Armistice Day Service at the Hospital.

Promotions. 1 Leader, 7 full Sub-Leaders, 5 Acting Sub-Leaders.

Present Numbers. 94 Wayfarers, 41 Sunbeams.

Two Junior Detachments formed.

One Senior Detachment formed.

One Sub-Leaders' Training Detachment formed.

Enrolments. Wayfarers 18 (15 of these came up from Sunbeams).

Sunbeams 16.

Second Steps Passed. 47.

Proficiency Badges earned. 36. (16 are now finishing off their Wardrobe Badge).

Southern Cross and 1 Star (6 years service) 1 earned.

| | | | | | | | | | |
|---|-------|---|---|---|---|---|---|----|---|
| | " | " | - | - | 5 | " | " | 25 | " |
| 4 | Stars | - | - | - | 4 | " | " | 12 | " |
| 3 | " | - | - | - | 3 | " | " | 10 | " |
| 2 | " | - | - | - | 2 | " | " | 1 | " |
| 1 | " | - | - | - | 1 | " | " | 3 | " |

Gifts gratefully acknowledged.

| | | | |
|---|-------|---|---|
| Donation, S. George's, Parktown, (per Rev. H. S. Chignell) | £ | s | d |
| " The Hon. Rosalind Gibbs | 1 | 0 | 0 |
| " 1st Nuthall Guides (per Miss A. Boden) | 3 | 0 | 0 |
| " Mrs D. R. Hunt | 10 | 0 | 0 |
| " Mr. & Mrs. Wollaston | 1 | 0 | 0 |
| | <hr/> | | |
| | £6 | 0 | 0 |

Gifts in kind.

25 yards Sunbeam-uniform material, Mrs. Rheinallt Jones.

12 hockey sticks and 2 balls, Mr. Baxter.

Sports Prizes, Matron Cordon.

'Guide' Magazines, Miss E. K. Amey.

Christmas gifts, Mrs. Wollaston, Miss E. F. Wollaston, Miss Manby and friends.

Collection Number: AD1715

SOUTH AFRICAN INSTITUTE OF RACE RELATIONS (SAIRR), 1892-1974

PUBLISHER:

Collection Funder:- Atlantic Philanthropies Foundation

Publisher:- Historical Papers Research Archive

Location:- Johannesburg

©2013

LEGAL NOTICES:

Copyright Notice: All materials on the Historical Papers website are protected by South African copyright law and may not be reproduced, distributed, transmitted, displayed, or otherwise published in any format, without the prior written permission of the copyright owner.

Disclaimer and Terms of Use: Provided that you maintain all copyright and other notices contained therein, you may download material (one machine readable copy and one print copy per page) for your personal and/or educational non-commercial use only.

People using these records relating to the archives of Historical Papers, The Library, University of the Witwatersrand, Johannesburg, are reminded that such records sometimes contain material which is uncorroborated, inaccurate, distorted or untrue. While these digital records are true facsimiles of paper documents and the information contained herein is obtained from sources believed to be accurate and reliable, Historical Papers, University of the Witwatersrand has not independently verified their content. Consequently, the University is not responsible for any errors or omissions and excludes any and all liability for any errors in or omissions from the information on the website or any related information on third party websites accessible from this website.

This document forms part of the archive of the South African Institute of Race Relations (SAIRR), held at the Historical Papers Research Archive at The University of the Witwatersrand, Johannesburg, South Africa.