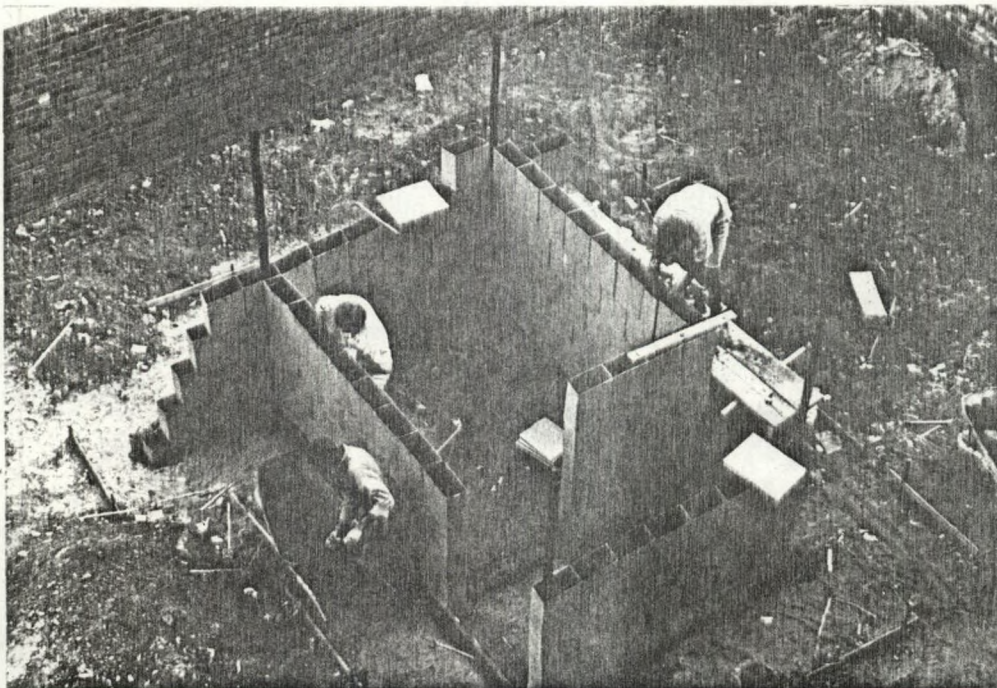


- A MEANS OF DOMESTIC CONSTRUCTION THAT COMBINES RURAL AND URBAN BUILDING TECHNOLOGY.
- LIGHT-WEIGHT BLOCK-LIKE WATER RESISTANT CARDBOARD MOULDS ARE FILLED WITH STABILIZED EARTH PREPARED BY MIXING ON-SITE SAND WITH EITHER CEMENT OR LIME.
- ONCE IN PLACE THE CARDBOARD MOULD CONTROLS THE CURING OF THE STABILISED EARTH TO GIVE A WALL OF IMPROVED STRENGTH
- D.I.Y. BUILDING IS EASY BECAUSE THE INTERLOCKING MOULDS FORM THE WALLING SYSTEM AND ALL THE NECESSARY MATERIALS CAN BE OBTAINED AS TIME AND FINANCES PERMIT.
- THE SECURITY OF MATERIALS AND THE USE OF LABOUR IS MAXIMISED BY A BUILDING METHOD OF ONE OPERATION ie. THE STABILISED EARTH FORMS THE WALL AS A CONTINUOUS PROCESS.
- ONLY THE MOULDS, WHICH PACK INTO CONVENIENT BUNDLES, AND THE CEMENT OR LIME NEED TO BE CARRIED TO INACCESSIBLE SITES. A MINIMUM AMOUNT OF WATER IS REQUIRED TO MIX THE STABILISED EARTH..



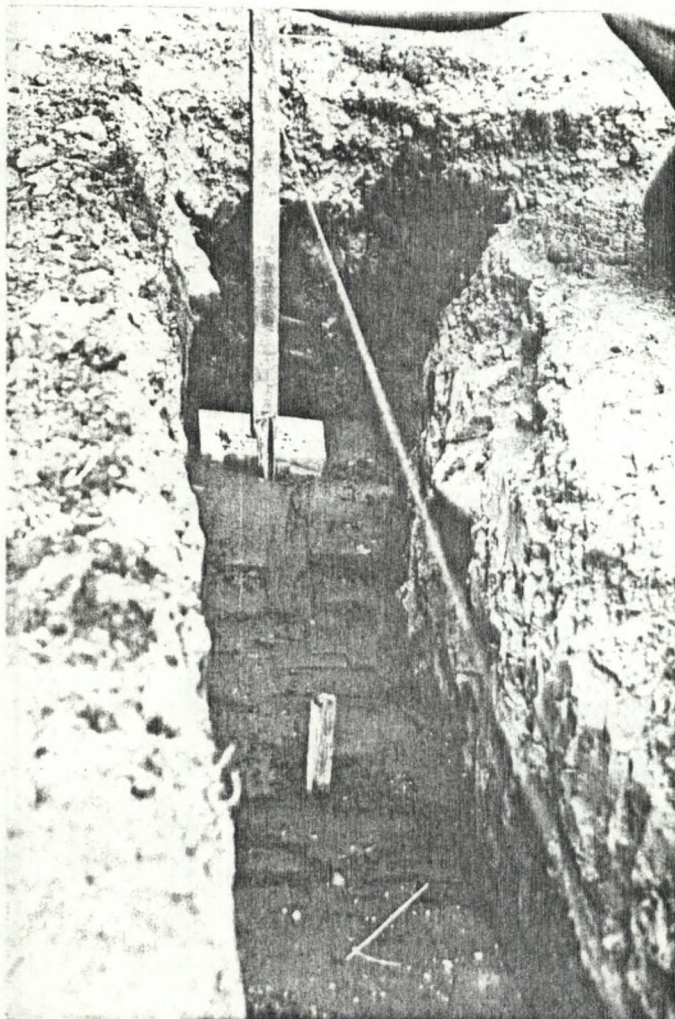
SOUTH AFRICAN PATENT APPLICATION N° 85/3389

# STABILISED EARTH SAND



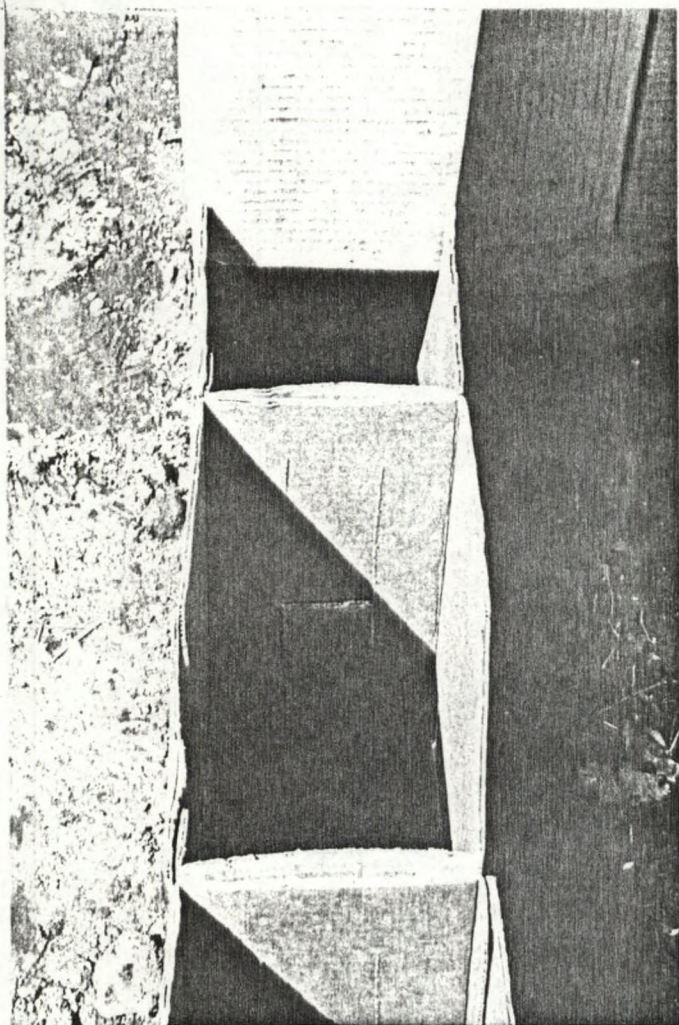


TRADITIONAL FOUNDATION EXCAVATION



LEVELLED FOUNDATION OF STABILISED EARTH



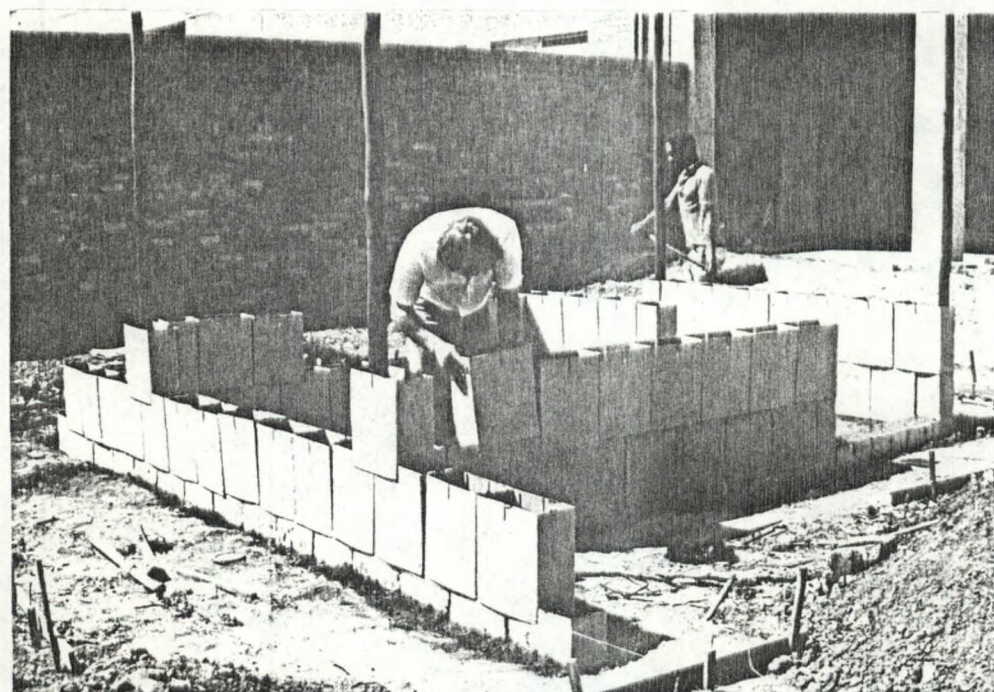
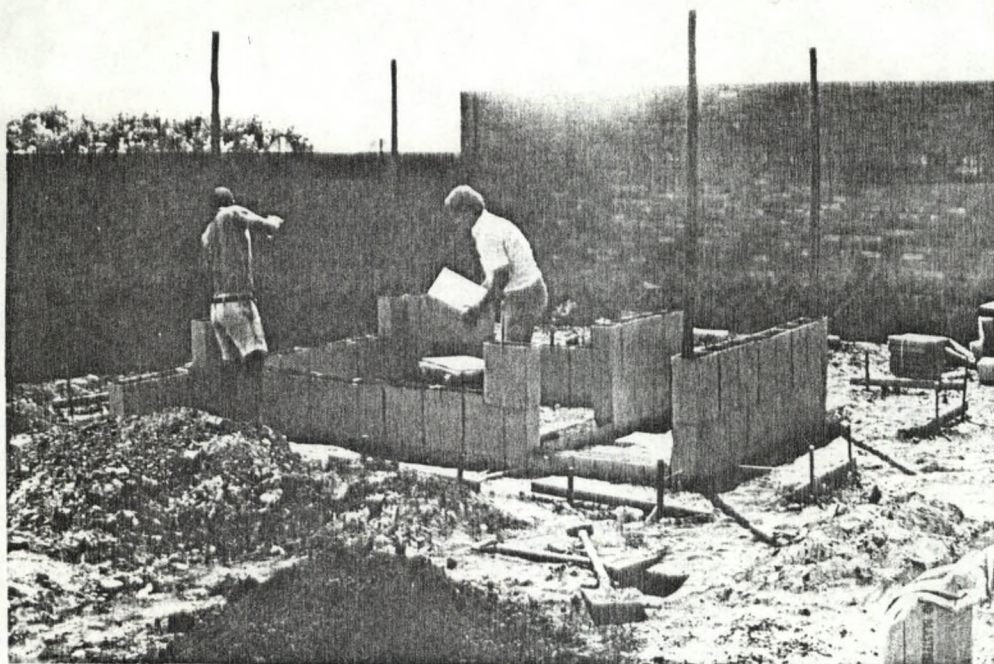


DETAIL OF SLEEVES WITH CUT-OUT FOR STABILIZED MATERIAL TO BRIDGE PERPEND FORMING SOLID JOINTS



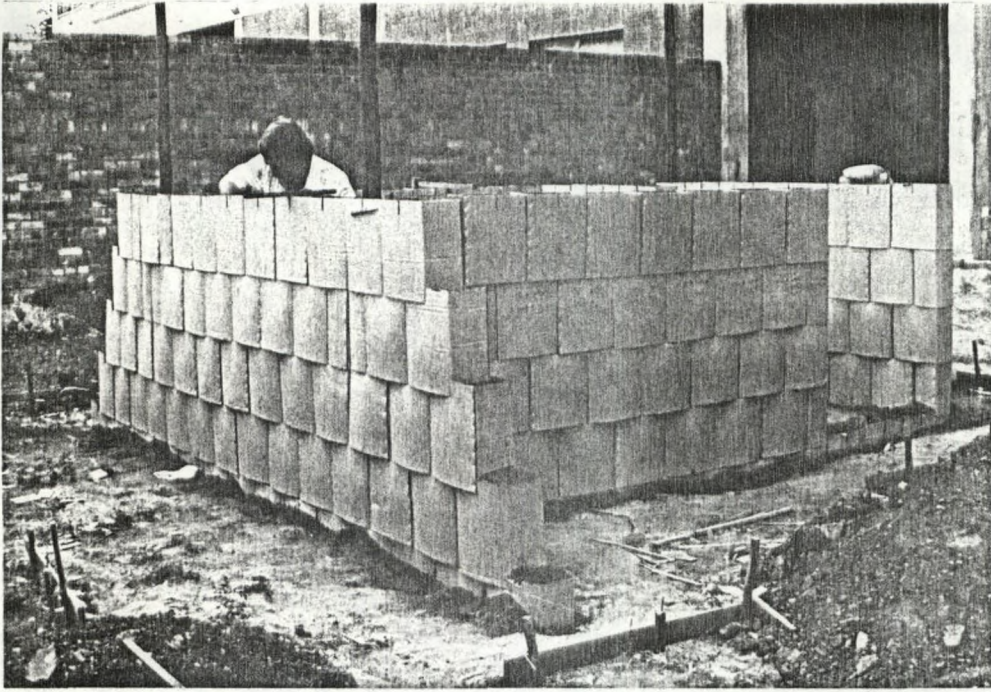
FIRST COURSE FILLED WHILE SLEEVE LOCATED BY SECOND COURSE, ie. LAY TWO FILL ONE.



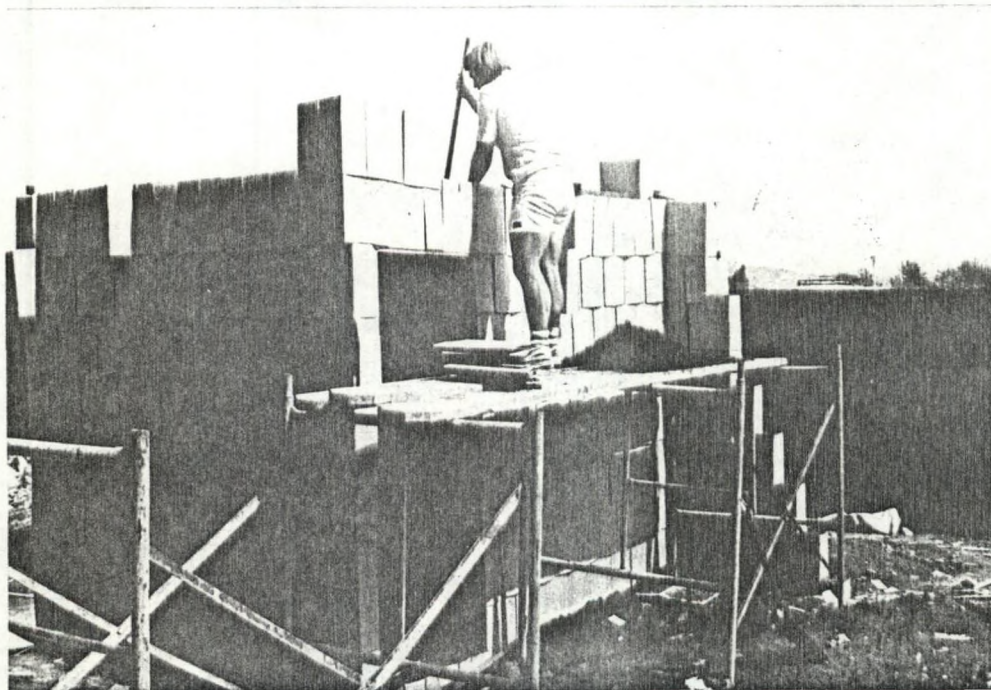
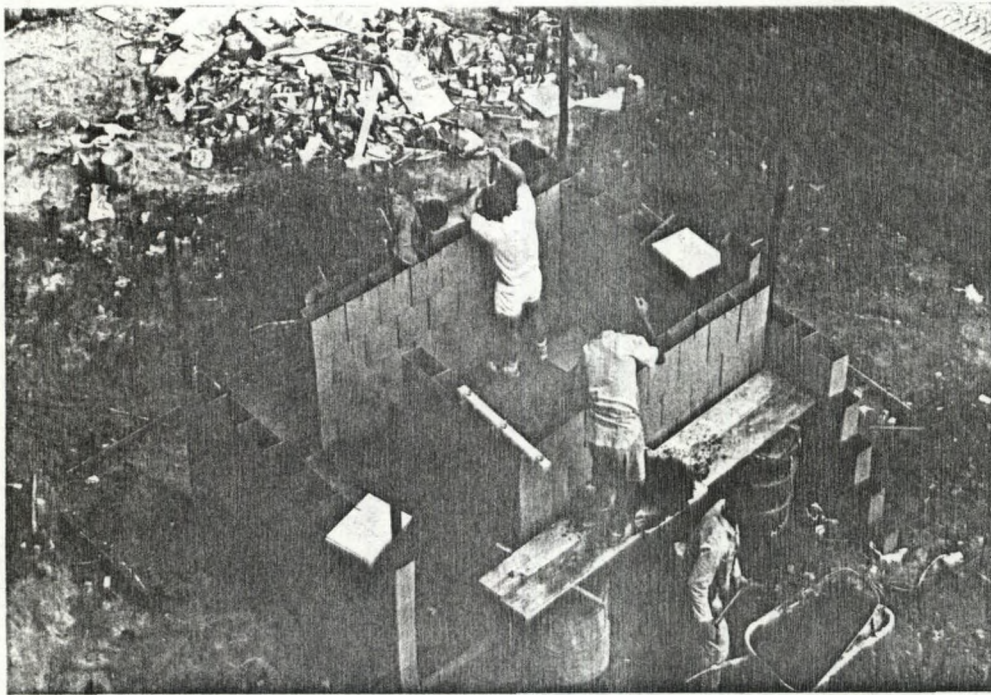


SEQUENCE SHOWING  
LAYING OF THIRD  
COURSE. TRADITIONAL  
ALIGNMENT METHODS  
APPLY.



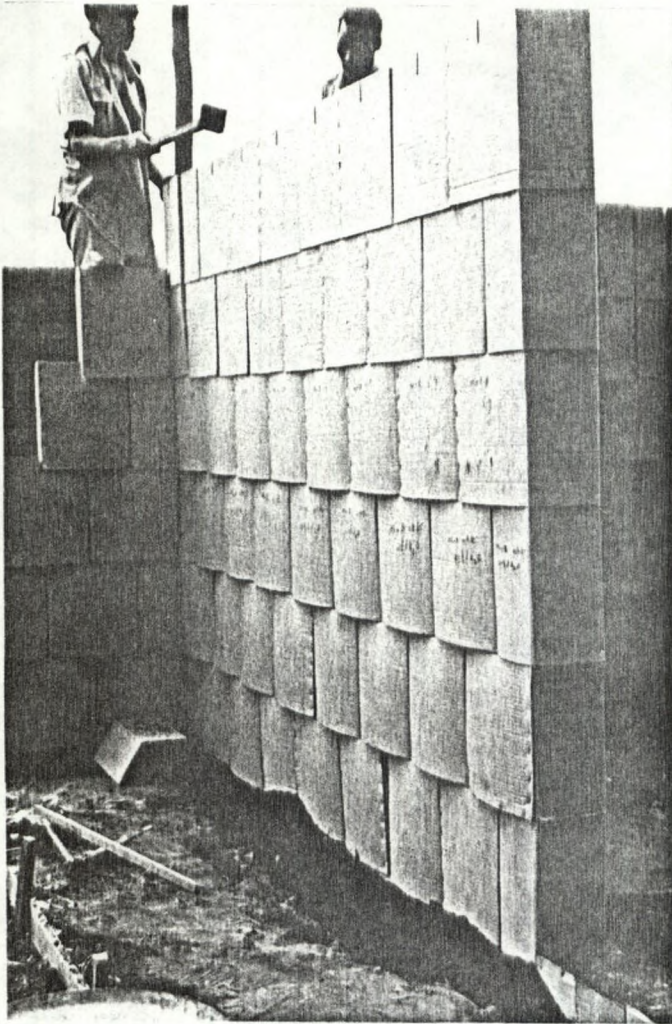


SEQUENCE TO  
WALL PLATE

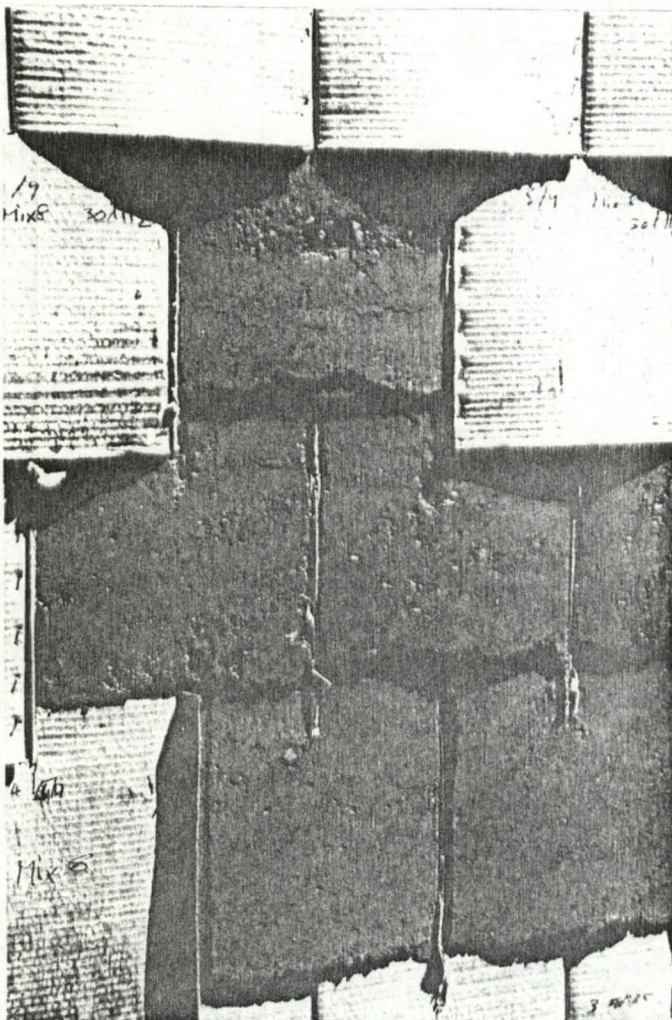


TRADITIONAL LINTOL  
TREATMENT AND  
FINAL GABLE  
TRIM.





CARDBOARD RETAINED IN POSITION UNTIL EXTERNAL FINISHING COMMENCES



DETAIL OF FINISHED STABILIZED EARTH WALL PRIOR TO LIME WASH CEMENT BAGGING OR TRADITIONAL PLASTER.

**Collection Number: AG1977**

**END CONSCRIPTION CAMPAIGN (ECC)**

**PUBLISHER:**

*Publisher:- Historical Papers Research Archive*

*Location:- Johannesburg*

©2013

**LEGAL NOTICES:**

**Copyright Notice:** All materials on the Historical Papers website are protected by South African copyright law and may not be reproduced, distributed, transmitted, displayed, or otherwise published in any format, without the prior written permission of the copyright owner.

**Disclaimer and Terms of Use:** Provided that you maintain all copyright and other notices contained therein, you may download material (one machine readable copy and one print copy per page) for your personal and/or educational non-commercial use only.

People using these records relating to the archives of Historical Papers, The Library, University of the Witwatersrand, Johannesburg, are reminded that such records sometimes contain material which is uncorroborated, inaccurate, distorted or untrue. While these digital records are true facsimiles of paper documents and the information contained herein is obtained from sources believed to be accurate and reliable, Historical Papers, University of the Witwatersrand has not independently verified their content. Consequently, the University is not responsible for any errors or omissions and excludes any and all liability for any errors in or omissions from the information on the website or any related information on third party websites accessible from this website.

This document is part of a collection held at the Historical Papers Research Archive at The University of the Witwatersrand, Johannesburg, South Africa.