



ACCESS ROADS OF THIS TYPE, BUILT ALONG SAND DUNES, WERE VERY
COMMON



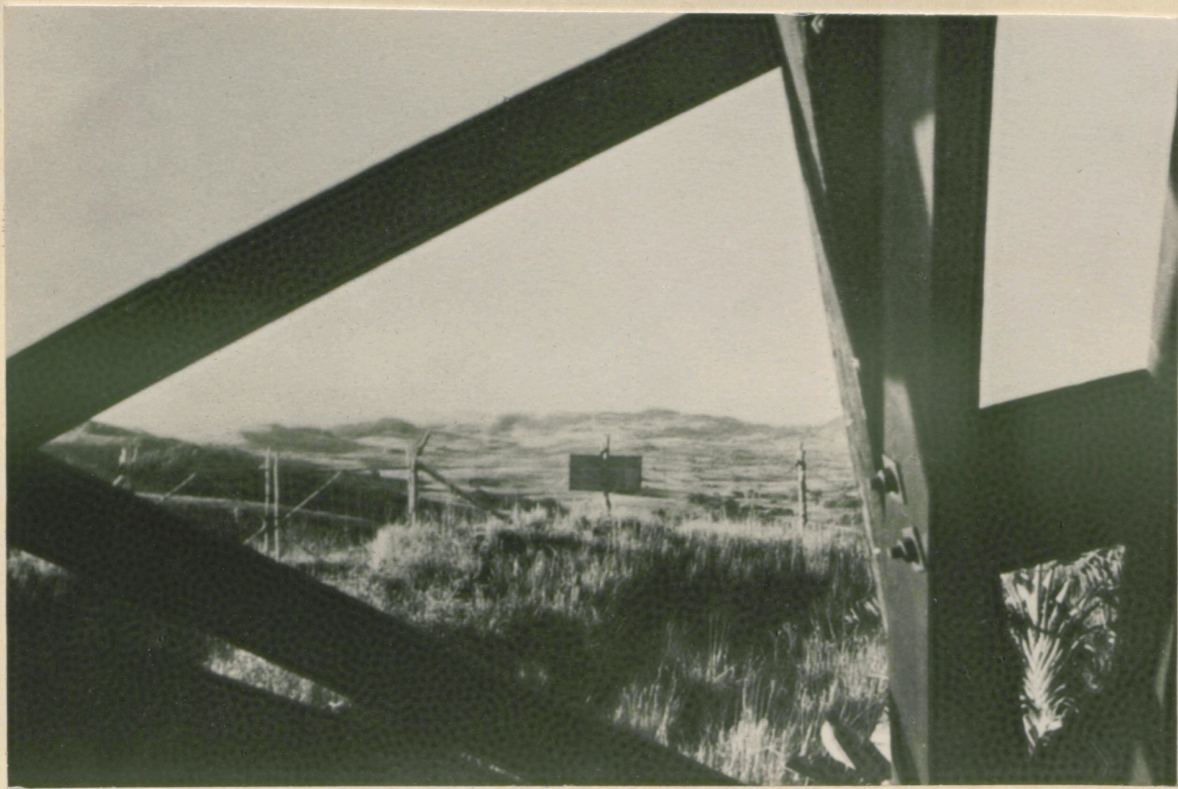
SOMETIMES THE "ROAD" WAS A WATERWAY



THE STATION CREW AT A STATION NORTH OF ST. LUCIA BAY
WERE REWARDED BY THIS VIEW.



CAMP UNDER CONSTRUCTION NEAR RICHARDS BAY ON THE
ZULULAND COAST



VIEW FROM A C.O.L. STATION LOOKING OVERLAND THROUGH
THE TIMBER GANTRY

Collection Number: A3377

Collection Name: Radar at the Bernard Price Institute

PUBLISHER:

Publisher: Historical Papers Research Archive

Location: Johannesburg

©2014

LEGAL NOTICES:

Copyright Notice: All materials on the Historical Papers website are protected by South African copyright law and may not be reproduced, distributed, transmitted, displayed, or otherwise published in any format, without the prior written permission of the copyright owner.

Disclaimer and Terms of Use: Provided that you maintain all copyright and other notices contained therein, you may download material (one machine readable copy and one print copy per page) for your personal and/or educational non-commercial use only.

The original bound volume is stored at the Archives and Records office of the University of the Witwatersrand, Johannesburg, South Africa.