

<u>Date</u>	<u>Day</u>	<u>Notes</u>
Aug. 23.	Wed.: Vigil.	6.30 Solemn Even: + Instruction.
" 28.	Mon.: \$. Augustins.	6.45 _{pm} Solemn Baptism.
Sept. 1.	Fri.: (\$. Giles).	Installation of Mother Annie Louise.
13.	Wed.: Eve of Feast. H.C.	Solemn Even: + Instruction.
20.	Wed.: Ember Day. in Oct: H.C.	Videl for Mass only, H.C. office throughout day. in account of H.C. Debat.
28.	Thurs.: Eve of \$. Michael ALLIA .	6.45 Solemn Even: + Procession.
Oct. 4.	Wed.: \$. Francis.	Trinival Service for Mother Julian, after Mass.
18.	Wed.: \$. Luke.	Solemn Even: + Instruction.
31.	Tues.: Vigil of All \$\$.	" " - Procession.
Nov. 1.	Wed.: All Saints.	6.30 - - - Instruction.
2.	Thurs.: Commem. of All Souls.	At Requiem, ^(said) Dijs ^{Dijs} Time (Priest + Congreg: alternate W.) ^{Indigit} _{to}
		8.30 Vespers of the Departed. Sung. 2 Candles only - is this correct?
5.	Wed.: Feria. (\$. Machutus)	Day of arrival of Mother Julian. Office of Our Lady throughout day, beginning with Lauds. Sister went into Chapel + sang Te Deum, Mother read Com 7 Mem: (with V. + Ty.) Mother in Asst. Superior's Stall until Installation.
25.	Sab.: \$. Katharine.	Prime 6.45. Collected from "Supplemental". The Visitor Installed Mother Julian, after V. Obed. Homage, after congregation had left. Elder Girls, Visitors, Household, present. In little Chapel, The Dean + Priests.
Dec. 3.	Semi.: Advent Semi:.	1st Vesp. of \$. Clement of Alex: T. C. D. (W. super - St. J.) Even: of Adv. vesp. Has this right? (V. " ")

1933.

Date	Day	Mass	Said or Sung	Time	Celebrant	Combs.	Coll.	
Aug. 28.	Mon.:	\$\$. Augustine	Fest	Said	7.15	The Chaplain	9	
29.	Tues.:	Behending \$J.B.	"	"	7.15	" "	12	
31.	Thurs.:	\$\$. Aidan	"	"	7.15	" "	12	
Sept. 1.	Fri.:	(\$\$. Giles).	Holy Spirit (Votive)	"	7.15	" "	12	
3.	Sun.:	Trinity XII.	Sun.:	Sung	7.15	" "	39	3/6
4.	Mon.:	Feria	Feria	Said	7.15	" "	8	
7.	Thurs.:	"	"	"	7.15	" "	7	
8.	Fri.:	Nativity of B.V.	Fest	Sung	7.15	" "	22	
10.	Sun.:	in Oct. Trinity XIII.	Oct.:	"	7.15	" "	37	5/2
12.	Tues.:	in Oct.	"	Said	7.15	" "	8	
14.	Thurs.:	Exaltat. H.C.	Fest	Sung	7.15	" "	29	
15.	Fri.:	Oct. Day	Oct. Day	Said	7.15	" "	8	
16.	Sab.:	in Oct.	Oct.:	"	7.15	" "	8	
17.	Sun.:	in Oct. Trinity XIV.	"	Sung	"	"	41	4/7
18.	Mon.:	in Oct.:	Mass at Church.	7.0.				
19.	Tues.:	"	Oct.:	Said	7.15.	Fr. Northcott, C.P.	10	
20.	Wed.:	Ember Day } Vigil.	Ember Wed: Memorials Vigil & H.C.	"	7.15	" "	16	
21.	Thurs.:	\$\$. Matthew } Oct. Day.	Fest	"	7.15	" "	10	
22.	Fri.:	Ember Day	Ember Fri.:	"	7.15	" "	8	
23.	Sab.:	" "	" Sab.:	"	7.15	" "	11	
24.	Sun.:	Trinity XV.	Sun.:	Sung	7.30	" "	44	7/4
25.	Mon.:	Feria	Reurrection (Votive)	Said	7.15	" "	9	

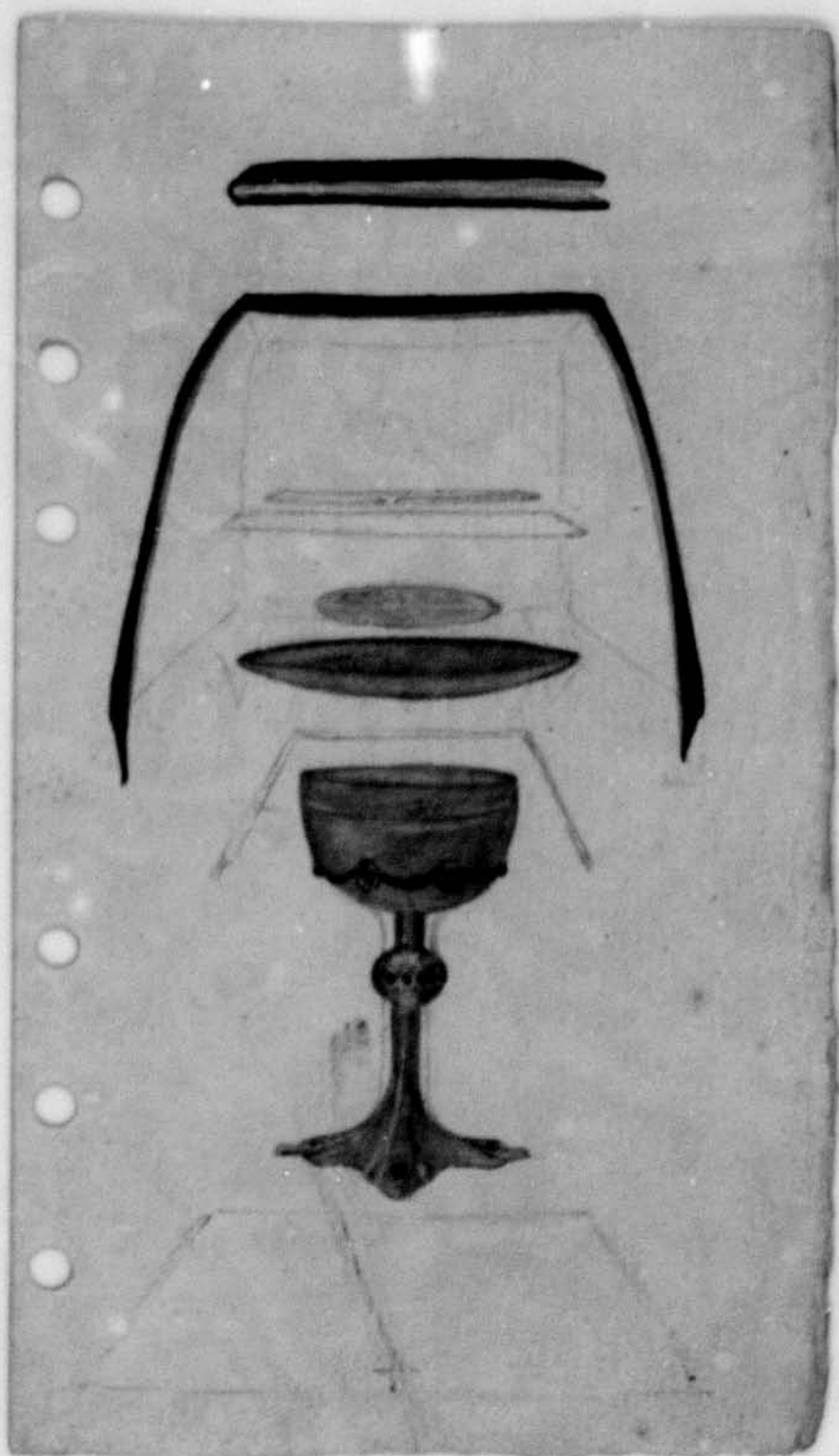
Date	Day	Mass	Said or Sung	Time	Celebrant	Comps.	Coll.
Sept. 25.	Thurs.	\$\$. Cyprian	Fast	Said	7.15	The Chaplain	13
28.	Thurs.	Feria	B. Sac: (Votive)	"	7.15	" "	10
29.	Fri.	\$\$. Michael & All AP.	Fast	Sung	7.15	" "	38 1/2
30.	Sat.	\$\$. Jerome. Dob.	Fast	Said	7.15	" "	10
Oct. 1.	Sun.	Dob. Trin: XVI.	Dob.	Sung	7.15	" "	39 1/10
2.	Mon.	H. Guardian AA. Dob.	Fast	Said	7.15	" "	9
4.	Wed.	\$\$. Francis. Dob.	Fast	"	7.15	" "	21
5.	Thurs.	Dob.	Dob.	"	7.15	" "	15
6.	Fri.	Dob. Day.	"	"	7.15	" "	16
7.	Sat.	Feria	O. Lady (Votive)	"	7.15	" "	14
8.	Sun.	Trinity XVII.	Sun.	Sung	7.30	" "	42 8/6
10.	Tues.	Feria	Feria	Said	7.15	" "	9
12.	Thurs.	"	"	"	7.15	" "	11
13.	Fri.	Trans: \$\$. Edward	Fast	"	7.15	" "	11
14.	Sat.	Feria	O. Lady (Votive)	"	7.15	" "	8
16.	Sun.	Trinity XVIII. (Signed Sun).	Sun.	Said, with Hymns.	7.30	" "	34 3/3
17.	Tues.	Feria \$\$. Walden	Fast Feria	Said	7.15	" "	11
18.	Wed.	\$\$. Lake	Fast	"	7.15	" "	12
19.	Thurs.	\$\$. Riverside.	"	"	7.15	" "	11
20.	Fri.	Feria	Feria	"	7.15	" "	11
21.	Sat.	"	O. Lady (Votive)	"	7.15	Fr. Talbot, C.R.	15

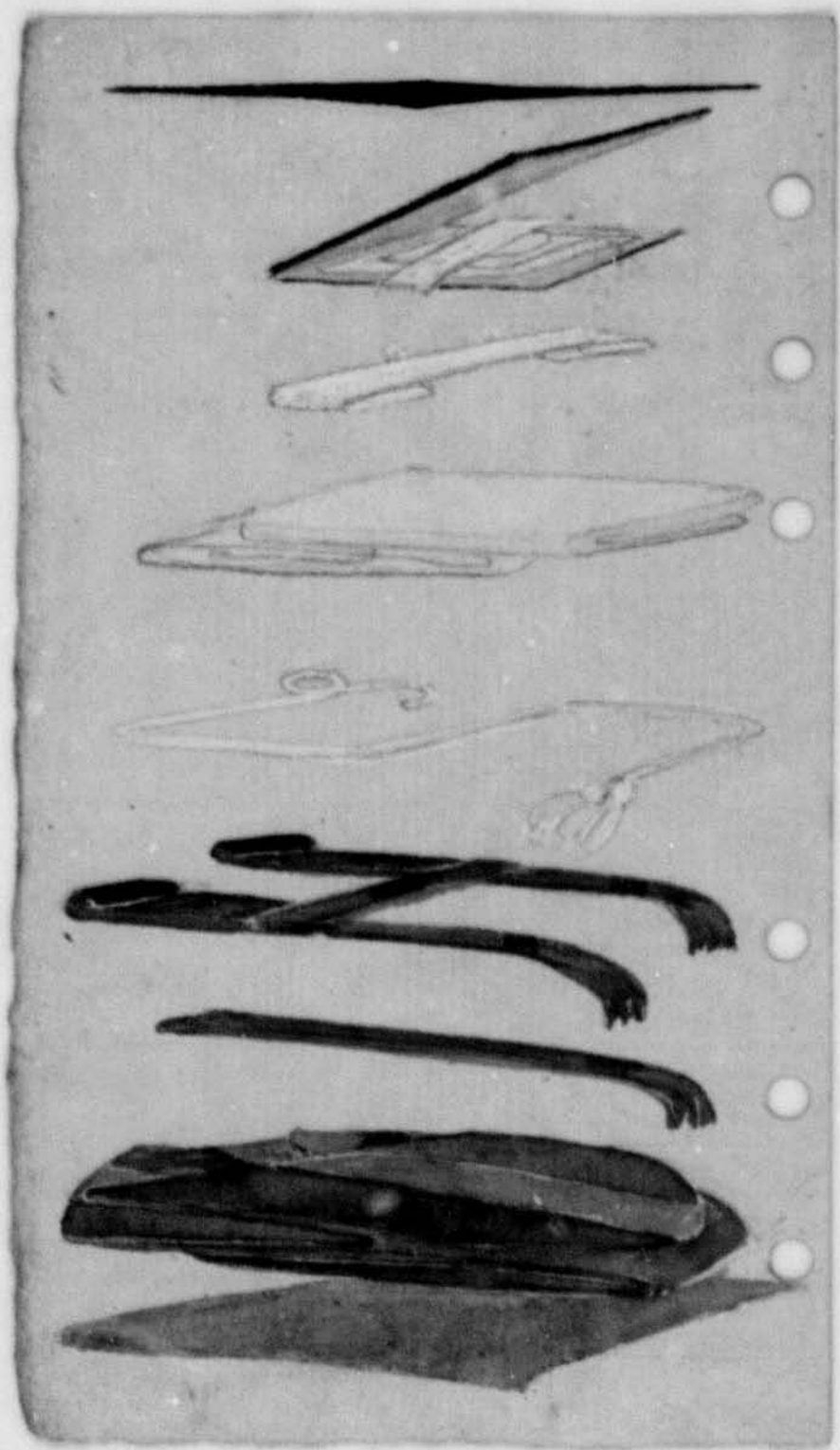
1933.

Date	Day	Mass	Said or Sung	Time	Celebrant	Comms	Coll.	
Oct. 22.	Sun.	Trinity XIX.	Sun.	Sung	7.30	The Chaplain	42	
24.	Thurs.	Feria	Requiem	Said	7.15	" "	12	
26.	Thurs.	"	Feria	"	7.15	" "	11	
27.	Fri.	Vigil	Vigil	"	7.15	" "	11	
28.	Sat.	St. Simon & Jude	Fest	"	7.15	" "	16	
29.	Sun.	Trinity XX.	Sun.	Sung	7.15	" "	38	6/-
31.	Tues.	Vigil	Vigil	Said	7.15	" "	10	
Nov. 1.	Wed.	All Saints	Fest	Sung	7.15	Fr. Cook assisted.	35	
2.	Thurs.	All Souls	Requiem	"	7.15	" "	14	
3.	Fri.	in Obs.	(Cant.) Obs.	Said	7.15	" "	7	
4.	Sat.	" "	"	"	7.15	" "	8	
5.	Sun.	Trinity XXI.	"	Sung	7.15	" "	36	5/9
7.	Tues.	in Obs.	Requiem (Priests)	Said	7.15	" "	15	
9.	Thurs.	Feria	Feria	"	7.15	" "	7	
10.	Fri.	"	"	"	7.15	" "	11	
11.	Sat.	St. Martin	Mass at Church		7.15.			
12.	Sun.	Trinity XXII.	Sun.	Sung	7.15	" "	34	7/6
14.	Thurs.	Feria	Requiem Feria (Mn.)	Said	7.15	" "	11	
15.	Wed.	" (St. Machutus)	O. Lady (Votive)	"	7.15	" "	10?	
16.	Thurs.	Feria (St. Marg. Sch.) (St. Edmund, B.C.)	Feria	"	7.15	" "	14	
17.	Fri.	St. Hugh.	Fest	"	7.15	" "	17	

FESTIVAL PSALMS

Sundays & Festivals	Mattins	1st. Evensong	2nd. Evensong
Advent Sunday	50.	96.	97.
December 26	2.		72.
" 27	96.		19.
" 28	98.		48.
" 29	19.		46.
" 30	85.		45.
" 31	98.		48.
Circumcision	90.		103.
Epiphany	46. 47.	72.	135.
Purification	84.	48. 87.	87. 93.
Easter Eve	16.		113. 114.
Easter Monday	2. 111.		113. 114.
Easter Tuesday	2. 57.		118.
Low Sunday	2. 111.		113. 114.
Ascension Day	8. 15.	24. 47.	21. 108.
Whitsun Eve			104.
Whitsun Monday	48.		104.
Whitsun Tuesday	48.		103.
Trinity Sunday	29. 46.	93.	97.
Corpus Christi	42. 43.	111. 116.	113.
Holy Name	48. 113.	124.	138.
S. Michael	34.	103.	148.
All Saints	34.	147.	33.
Dedication	48. 122.	132.	84.
Feasts of our Lady	45.	8. 87.	113. 131.





Blessing of
children

1st lesson. Haggai 2 verses 1-9.

2nd " . Ephi: 2 verses 19-22



MARCH 1954

Devotional Price List of Francis Tucker and Company Limited

26 & 28 Manchester St.,
LIVERPOOL
(Central 0057)

31 Ashley Place,
WESTMINSTER, S.W.1.
(Victoria 2925)

118 Clyde Street,
GLASGOW.
(Bell 0281)

Orders should be sent to the nearest Branch with a remittance to cover cost and postage, except where you already have an account with us.

The items marked with an asterisk thus * are priced inclusive of Purchase Tax.

No goods sent on Sale or Return.

When ordering will you kindly use "Order Key".

"ORDER KEY"

EACH

CRUCIFIXES - STANDING

CS.1	Oak, light or dark with ivory plaster figure	10"	9s. 0d
CS.2	" " " " " " " "	12"	11s. 0d
CS.3	" " " " " " " "	14"	11s. 6d
CS.4	" " " " " " " "	20"	27s. 6d
CS.5	" " " " " " " "	24"	30s. 0d
CS.6	" with plastic ivory figure "WAYSIDE"	9"	12s. 6d
CS.7	Blk. bakelite with plastic fig. & round base	6"	3s. 6d
CS.8	Oak with ivory or luminous plastic figure	6"	6s. 6d

CRUCIFIX SETS

DS.1	Blk. bakelite stdg. c'fix 6", round base, ivory figure, with two candles & holders.....	4s. 6d
DS.2	Blk. bakelite stdg. c'fix 6", gilt figure, square base, with two candles & holders.....	9s. 6d
DS.3	Blk. bakelite stdg. c'fix. with glass stoup and two candles and holders.....	15s. 9d

Collection Number: AB1751

COMMUNITY OF ST MARY THE VIRGIN 1903-1976

PUBLISHER:

Publisher:- Historical Papers, University of the Witwatersrand

Location:- Johannesburg

©2012

LEGAL NOTICES:

Copyright Notice: All materials on the Historical Papers website are protected by South African copyright law and may not be reproduced, distributed, transmitted, displayed, or otherwise published in any format, without the prior written permission of the copyright owner.

Disclaimer and Terms of Use: Provided that you maintain all copyright and other notices contained therein, you may download material (one machine readable copy and one print copy per page) for your personal and/or educational non-commercial use only.

People using these records relating to the archives of Historical Papers, The Library, University of the Witwatersrand, Johannesburg, are reminded that such records sometimes contain material which is uncorroborated, inaccurate, distorted or untrue. While these digital records are true facsimiles of paper documents and the information contained herein is obtained from sources believed to be accurate and reliable, Historical Papers, University of the Witwatersrand has not independently verified their content. Consequently, the University is not responsible for any errors or omissions and excludes any and all liability for any errors in or omissions from the information on the website or any related information on third party websites accessible from this website.

This document is part of a private collection donated to the South African History Archives and Historical Papers at The University of the Witwatersrand.

DOCUMENT DETAILS:

Document ID:- AB1751-Aa2-3-1

Document Title:- Holy Cross, Irene Homes Log Book: Chapel Vol.3 - September 1932 - July 1936