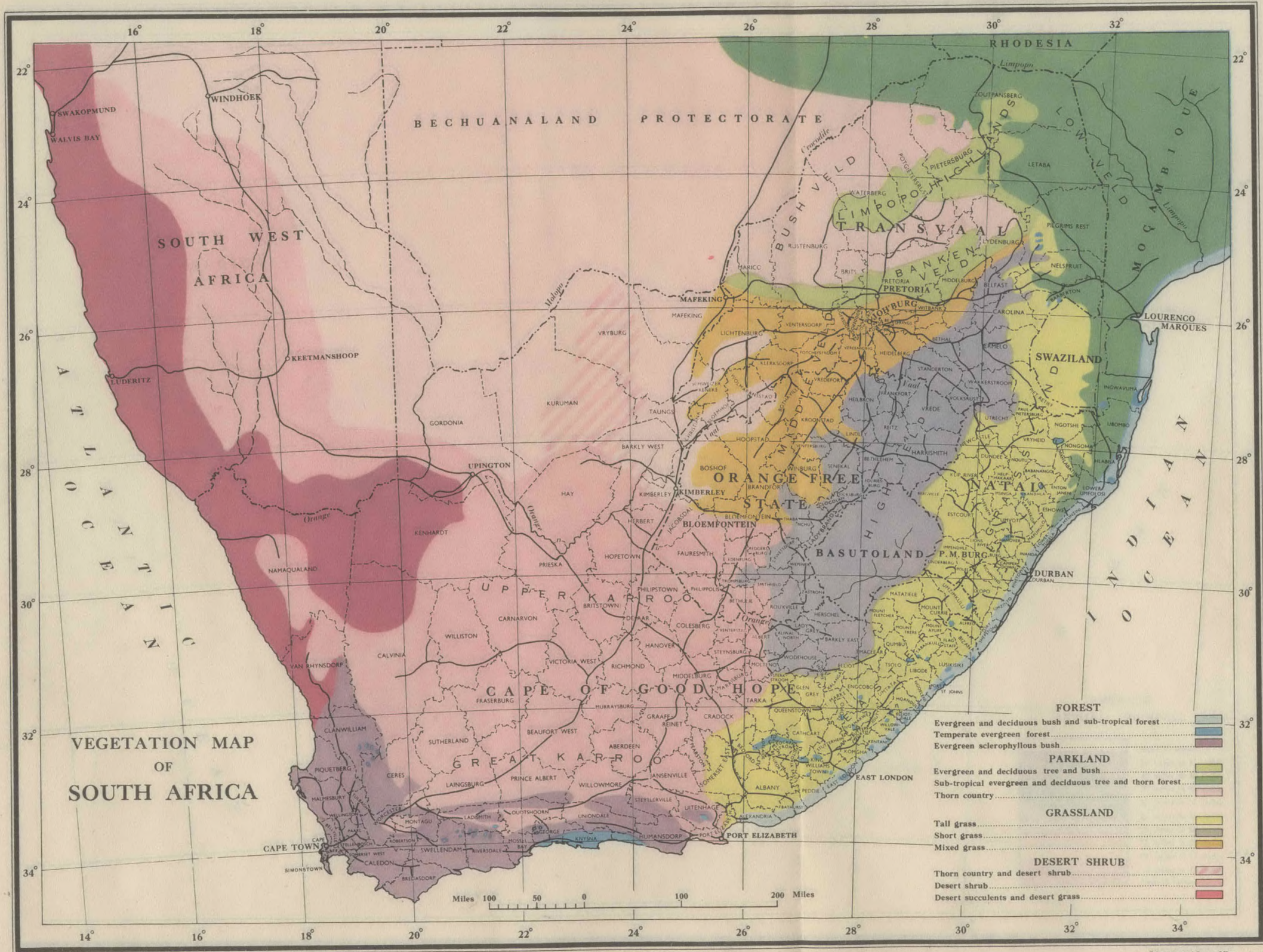


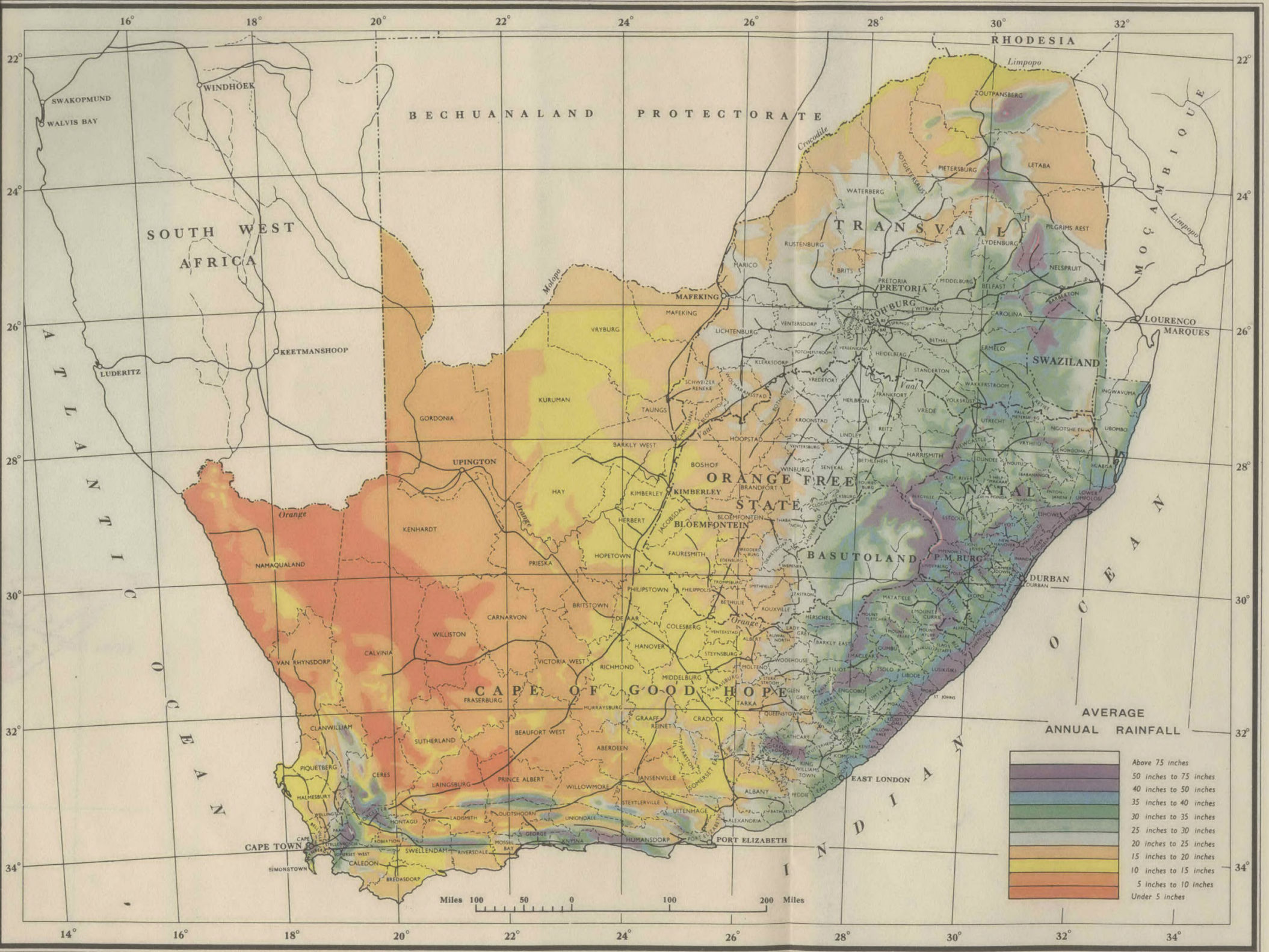
- recruitment, for mines, through traders, 44.
through Mines' Recruiting Agency, 174.
improved conditions of, 175.
terms of, 182.
- for N.A.D. staff, 267.
- Regional Development, Planning, Authorities, 199, 239, 256, 271 (xxxiv, xliii), 275, 280.
through railways, 253.
Registrar of Deeds, Tsewu vs., 28.
- rehabilitation, Native Reserves, scheme of N.A.D., 4, 192-239, 248, 271 (xxxiv), 275.
thesis by B. B. Murcott, 84 (1).
need for, 97-106.
needs co-operation of people, 101, 106, 239, 271 (xxxiv).
of agriculture, 159, 239.
youth organisation to help in, 169, 225, 239, 271 (xxxiv).
hindered by migratory labour, 185.
of life, not merely soil, 196, 239.
personnel important, 165, 277.
financing of, 256, 282.
- rejectment, military, 121, A. XIV.
by N.R.C., 121, A. XV.
- released areas, individual land purchase in, 17.
provided by Act 18 of 1936, 29.
defined, 29.
over-populated, 237.
schedule of, A. II.
- representation, 261.
- research, Institute, 20, 239, 271 (xxxiv), 278.
social, 3, 271 (iv).
- Rhodesia, 248.
Northern, 172, 173, 175, 176, 180, 182 (1), 269 (1).
Southern, 172, 173, 176, 180.
Southern, Director of Native Agriculture, 215.
- roads, access, 223.
National, 253.
under local councils, 269.
- rodents, 112, 130.
- Rogers, H., 24 (1), 53 (2), 54 (1), 269 (1).
- Roodepoort, 179.
- Ruanda, 172.
- Rustenburg, 77, 176, 218, 248, 250.
- St. Mark's, 77, 130.
- St. Vincent, 123.
- salaries, of N.A.D. officials, 265-267.
- sanitation, 193, 273.
need for improvement in, 102, 114, 116, 207, 271 (xxxiv).
supply in villages, 105, 117, 242, 271 (viii).
inadequacy of causes disease, 130, 133, 136.
needed for schools, 145, 271 (xvi).
Jeanes teachers to encourage, 156.
taught to women welfare officers, 161.
- sawmilling, 231, 250.
- Schapera, I., 42 (1), 117 (4), 203 (6), 244 (1).
- scheduled Native areas, in Natives Land Act, 28.
in Native Trust and Land Act, 29, 30.
- schools, inadequate provision of, 101.
books, facilities for purchase of, 144.
government-aided, 141-147.
unaided, 148-149.
committees for, 142.
buildings for, 141, 145.
need for water and sanitation, 145, 271 (xvi).
conditions of aid for, 146.
feeding in, 151, 204.
secondary and high, 153-154, 271 (xix).
agricultural, 157-160, 271 (xxii).
games and nature study in, 156.
night, 164.
attendance improved by stock limitation, 217.
for commercial training, 244, 245.
built with mineral royalties, 248.
more co-operation with demonstrators in, 264.
European primary, 265.
see education.
- seedlings, 60, 232.
- seeds, 60, 65.
subsidised sale of, 65.
- Seliba Reserve, 208.
- Senegal, 172.
- Shaka, 21, 22.
- sheep 75, 78, 85, 207, 209, 217 (1), 221.
- sheller, mealie, 245.
- Shepstone, Port, 256.
- Shepstone, Sir Theophilus, policy in Natal, 21, 22, 24.
- shoemaking, 243.
- shoes, factories for, 249, 252.
- Sibasa, 208, 227.
- sisa custom, 77.
- Sitson, P., 243 (2).
- smallpox, 129.
- Smith, Sir Harry, 20.
- Social and Economic Planning Council, Reports referred to—*
First, 1, 248.
Second, 1, 238, 265, 269.
Fourth, 1, 15, 222, 274, 275.
Fifth, 1, 16, 248, 256, 280.
Sixth, 3.
Eighth, 16 (1).
- sociologists, 199, 263, 270, 271 (liii).
- soil, 226, 231, 275.
erosion—see erosion.
conservation, 196, 223, 273.
fertility, needs restoring, 223.
can be restored, 224.
affected by fuel shortage, 226.
by wind, 229.
reclamation, 273.
- Sophiatown, 164.
- South African Native Trust 24, 29, 37, 217, 224, 230, 239, 271 (xxxiv), 275, 280.
responsible for forest policy, 94, 95.
for Regional Development Authorities, 199.
expenditure of, A. I.
- S.A. Native Trust Fund, revenue and expenditure of, 29.
Native Development Account merged in, 140.
- soya beans, 158, 274.
- spinning, 163.
instructors in, 247.
- squatters, on Crown lands, 30.
- statistical services, social and economic, need for improvement in, 3, 120, 271 (iii), 272.
- statisticians, 199.
- stock, 76, 209, 211.
limitation of unpopular, 74.
unequal distribution of, 77-78.
quantity important to Natives, 88.
sales of, 91, 218, 219, 239, 271 (xxxiv).
care of, 207.
paths, 208.
density of, 211.
limitation of in Betterment Areas, 217.
means of encouraging reduction of, 218-219, 239, 271 (xxxiv).
see livestock.
- storage, of cereals, 70, 239, 245, 271 (xxxiv).
co-operative, 246.
- storekeeping, 243.
- Straits Settlements, 126.
- strip-ploughing, 50.
- Stubbs, Col. E. T., 164.
- Stutterheim, 256.
- Sub-Nigel Mine, 17.
- Sudan, Anglo-Egyptian, 172.
- sugar cane crops, plantations, 205, 239, 271 (xxxiv).
Indian importation for, 22.
European, in Zululand, 27.
distribution of, 59.
Natal Native output, 1944-45, 59.
- surveying, inexpensive system on Trust Settlements, 53.
recommended for Reserves, 238, 239, 271 (xxxiv).
- surveys, reclamation, 213.
agricultural, 247, 271 (xxxix), 275.
mineral, 247; 248, 255, 271 (xxxix), 275.
regional, 248.
aerial, 275.
soil and vegetation, 275.
scenic, 275.
- Swartkop, tree-planting at, 96.
- Swaziland, 176, 219 (2).
- syllabuses, 150-151.
- syphilis, 131.
- tailoring, 163.
in villages, 243.
- Tamara, 122.
- Tampostad, 112.
- Tanga, 92.
- Tanganyika, 172.
- tanks, for grain storage, 70, 203, 245.
for water, schools, 145.
dipping, 223, 269.
- tannery, tanning, 247, 249, 230.
- tapeworm, 207.
- Taungs, 57, 204.
threshing wheat by N. A. D. at, 69.
- tax general, allocation of revenue from, 140.
local, 269.

- teachers, 243.
 unqualified, in unaided schools, 148.
 inadequate supply of, 152, 154, 156, 165-166, 271 (xviii, xix).
 European, in Native schools, 154, 171 (xx).
 training of, 156.
 Jeanes, 156.
Abancedise, 156 (2).
 conditions of, 166, 271 (xix).
 visiting, 279.
- Tea Expansion Bureau, 169.
- teeth, diseases of, 109, 115, 132.
- Teko, 157.
- Tembuland, annexation of, 25.
- temperature, variability of, 34.
- tenancy, cash, on farms, 15.
- tenants, labour, rent-paying, 30.
- tenure, see land tenure.
- Thaba 'Nchu, land provision at, 26.
 Grobler dam at, 61.
 milk sold to dairies, 92, 204, A. X.
 Reclamation Survey, 207.
 overstocking at, 208.
 soil erosion countered at, 224.
 manure burnt at, 226.
- Thabina, 61.
- theza servitude*, 228.
- timber, 230, 239, 271 (xxxiv), 280.
 inadequate provision for, 93, 226, 230.
 wholesale cutting of, 221, 226, 229.
 exotic, 227.
 softwoods, 96, 228, 230, 231.
 wattles, 228 (1), 231, 280.
 conifers, 228 (1).
 industry, 250, 280.
- tobacco, 58, 59.
- topography, topographical factors, influence of, 34, 275.
- tourist industry, 275, 280.
- traders, very few of Natives, 40, 244.
 functions of, 40-47.
 complaints against, 42.
 assist recruitment, 44.
 store grain, 70.
 conditions of licences for, 24.
 employ Native carpenters, 250 (1).
- trading, rentals paid to Trust Fund, 29.
 sites, distribution of, 46.
- trade unions, 258.
- training, commercial, 244, 245.
 vocational, 162-163.
 for girls, 163, 164.
- Transkei Proclamations*—
 11/1922, 40 (2), 45.
 74/1943, 40 (2).
 164/1934 (twenty mile radius rule), 46.
 244/1934, 244.
 191/1934, 245.
- Transkeian Director of Agriculture, Annual Reports of, 160 (1).
 Assistant Director, 218.
- Transkei, Transkeian Territories, 9, 75, 157, 160, 161, 202, 223, 226, 227, 228, 229, 231, 232, 236, 244, 245 (2), 247, 248, 249, 254, 269, 274, 280.
 annexation of, 25.
 traders in, 40.
 individual ownership of land in, 53, 236.
 production in, 90.
 manpower in, 123 (5).
 plague in, 130.
 overstocking in, 208, 213.
 co-operation in, 245.
 coal in, 248.
 roads in, 253.
 power in, 254.
 Regional Development Authority for, 256.
- Transkeian Territories Co-ordinating Welfare Council, 136 (3), 231 (1).
- Transkeian Territories General Council, 138 (2), 157, 192, 223, 245, 250, 266.
 responsible for forest policy, 94.
- transport, 193.
 need for improved facilities in, 105, 204, 239, 242, 249, 271 (xxxiv), 280, 282.
 difficulty in providing, 252.
 rail, 253, 256.
- Transvaal, land policy in, 26.
 annexation of, 26.
 Supreme Court of, 28.
 Northern, 32, 34, 132, 208.
 Western, 32, 34, 55 (1), 132.
 stock ownership in, 77.
 North-eastern, 115, 208, 235.
 malaria station at Tzaneen, 131.
 Central, 176.
 erosion and overstocking in, 208.
 local councils in, 269.
- Transvaal Mine Medical Officers' Association, 130 (3).
- trees, planting against soil erosion, 223.
 growing for fuel, 230, 231.
- tribal system, 17, 269.
 compatible with progress, 17.
 land tenure under, 54.
 its future, 269.
- Trinidad, 123.
- Trust Farms, 52.
 "York", vegetable production on, 61.
 conditions of occupation of, A. IV.
- Trust land, control and development of, 52, 224.
 individual tenure on, 53.
 textile factory on, 241.
- Trusts*—
 Natal Native Trust, 24, 29.
 Putile Trust, 24 (2).
 S.A. Native Trust, 24, 29, 37, 217, 224, 230, 239, 271 (xxxiv), 275, 280.
 expenditure of, A. I.
 Zululand Native Trust, 24.
- Tsewu, 28.
- Tsolo, 157.
- Tsomo, 77.
- Tswana, field distant from homes, 55.
 problems of large settlements, 117.
- tuberculosis, 113 (1), 130.
- Tugela River 28, 61, 131.
- T.V.A., 197 (1), 280.
- Tweespruit Dairies, 92, A. X.
- twenty mile radius rule, 46.
- typhus, 113, 129.
- Tzaneen, 131, 204.
- Ubombo, 131, 208.
- Uganda, 126, 172.
- Umgungundlovu Co-operative Trading Society, Ltd., 246.
- Umkomaas River Valley, 7, 131.
 see Polela.
- Umtata, 77, 227, 253.
 Chief Magistrate of, 40.
 (Kambi) health centre at, 125, 136, 279.
 rural health clinics, 127.
 factories proposed at, 249, 256.
- Umzimkulu, 25.
 Trust Settlement at, 52, 117 (3).
- Union Minière (Belgian Congo), 175, 180.
- United States of America, population density of, 36.
- urban areas, legislation needs modification, 16.
- urban centres, in Reserves, 198, 238, 242, 271 (xxxvi), 280.
- urban Natives, conditions of, 30 (2).
- urbanisation, of Reserves, 7.
 of population, 122, 189.
 of migratory labour, 186.
- vegetables, 60, 204.
 production on "York," 61.
 at Alice, 61, 204.
 at Fort Cox, 158, 204.
 at Glen Grey (Freemantle Farm School), 160.
 at Taungs and Tzaneen, 204.
 inadequate supply of, 202.
 emphasis on increased production of 239, 271 (xxxiv), 274.
 demand for should increase, 243.
 canning and dehydration of, 251.
- vegetal cover, 221, 226.
- vegetation, 208, 224, 229, 239, 271 (xxxiv), 275.
- veld, 274.
 control of, 193, 224, 239, 271 (xxxiv).
 overgrazed, 208, 210.
 limiting stock to capacity of, 208.
 burning, 221.
- venereal disease, 122, 131, 185.
- vermin, 112.
- veterinary regulations, training, 82, 159, 207.
- villages, creation of, 105, 117, 193, 198, 238, 239, 242, 244, 246, 271 (viii, xxxvi).
 need for control of, 117, 271 (viii).
- vital statistics, 120-129, 273.
- Voortrekkers, Native policy of in Natal, 21.
- Vrededorp, survey by New Education Fellowship, 109 (1).
- Vryburg, 256.
- Vryheid, 253.

- Vuma Experimental Farm, 84.
- wages, determinations of in Reserves, 256, 280.
- waggon, 64.
ox-, 253.
- War of Independence, 26.
- water, 193, 254, 271 (xli), 275.
need for improved supplies of, 102, 112-115, 204, 271 (vii), 280, 282.
supply in villages, 105, 117, 242, 271 (viii, xxxvi).
underground, impurities in, 115.
boreholes for, 115.
impurity causes intestinal complaints, 130.
causes diseases, 133, 136.
needed for schools, 145, 271 (xvi).
inadequate for school gardens, 151.
supplies threatened by erosion, 224, 229.
difficulty in providing, 252.
see irrigation.
- watersheds, drying up of, 98.
affected by erosion, 220.
- wattles, 228 (1), 231, 280.
bark, for tanning, 249.
- weaving, 163.
instructors in, 247.
on missions, 249.
- weeding, done by women, 67.
importance not recognised, 67.
- weeds, removed by cattle, 221.
- welfare, social, 259, 268.
- wheat, control of, 42.
increased production of, 57, 58.
- Whittlesea, 228.
- whooping cough, 127.
- Wiles, F. J., 130 (3).
- Wilson, G., 180.
- Witwatersrand, 172-190.
- Witwatersrand Native Labour Association, 175.
- Witzieshoek, land provision at, 26.
climatic conditions of, 34.
- women, responsible for cultivation, 62, 63.
for weeding, 67.
herd cattle among Lovedu, 73.
time wasted collecting water and wood, 114, 226, 229.
training of by Jeanes teachers, 156.
agricultural training for, 161.
as home welfare officers, 161, 169.
education of important, 169, 271 (xxv).
not many absent from Reserves, 176.
demonstrators, 264, 271 (xlvi).
- wood-lots, 230.
- wood pulp, 250.
- woodwork, in schools, 151.
- woodworkers, credit facilities for, 247.
- wool, 85, 90.
- Worthington, E. B., 136 (3), 197 (1), 268 (1).
- Xalanga, 77.
- Yates and Warriner, 280 (1).
- "York" Trust Farm, 61.
- youth organisations, proposed, 169, 225, 239, 271 (xxviii, xxxiv).
Special Service Battalion, 279.
Physical Training Battalion, 279.
- Zebediela, 61, 248.
- Zenzele, 161.
- zoning, rezoning, 117, 169, 193, 204, 238, 271 (viii).
- Zululand, Northern, 9, 96.
treaty obligations, 21.
land policy, 23, 24.
annexation of, 27.
erosion in, 208.
drift sand combated, 223.
tribal system still strong in, 269.
- Zululand National Training Institution, 269 (1).
- Zululand Native Trust, 24.
- Zulus, 21, 22, 72.



UNION OF SOUTH AFRICA



UNION OF SOUTH AFRICA

DISTRIBUTION OF NATIVE AREAS

Scheduled Native Areas



Released Areas



20 inch rainfall isohyet



0 10 20 30 40 50 60 70 80 90 100 Miles

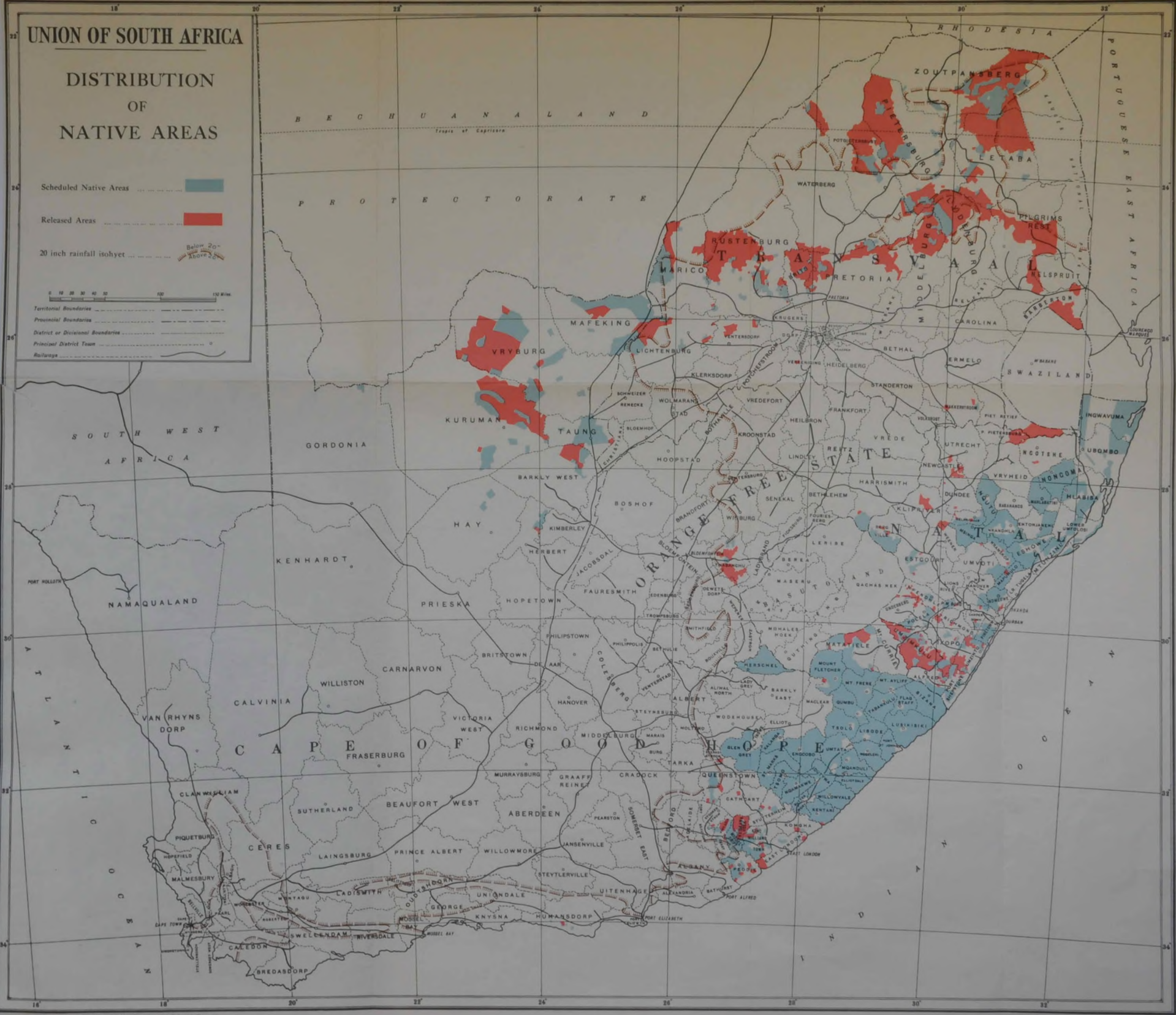
Territorial Boundaries

Provincial Boundaries

District or Divisional Boundaries

Principal District Town

Railways



Collection Number: AD1715

SOUTH AFRICAN INSTITUTE OF RACE RELATIONS (SAIRR), 1892-1974

PUBLISHER:

Collection Funder:- Atlantic Philanthropies Foundation

Publisher:- Historical Papers Research Archive

Location:- Johannesburg

©2013

LEGAL NOTICES:

Copyright Notice: All materials on the Historical Papers website are protected by South African copyright law and may not be reproduced, distributed, transmitted, displayed, or otherwise published in any format, without the prior written permission of the copyright owner.

Disclaimer and Terms of Use: Provided that you maintain all copyright and other notices contained therein, you may download material (one machine readable copy and one print copy per page) for your personal and/or educational non-commercial use only.

People using these records relating to the archives of Historical Papers, The Library, University of the Witwatersrand, Johannesburg, are reminded that such records sometimes contain material which is uncorroborated, inaccurate, distorted or untrue. While these digital records are true facsimiles of paper documents and the information contained herein is obtained from sources believed to be accurate and reliable, Historical Papers, University of the Witwatersrand has not independently verified their content. Consequently, the University is not responsible for any errors or omissions and excludes any and all liability for any errors in or omissions from the information on the website or any related information on third party websites accessible from this website.

This document forms part of the archive of the South African Institute of Race Relations (SAIRR), held at the Historical Papers Research Archive at The University of the Witwatersrand, Johannesburg, South Africa.