

94 D

KLIM IS SAFE MILK



KLIM WILL KEEP YOU AND YOUR FAMILY HEALTHY AND STRONG

A tin of Klim lasts a long time and will make over 6 bottles of wonderful, sweet-tasting, safe milk.

1. Pour cold water into a jug or basin. Use as much water as you want to have milk.
2. To make KLIM POWDER into milk, you must use four "measures" of cold water to one "measure" of Klim Powder. You can use a spoon, cup or any other receptacle as a "measure". Put the right amount of Klim Powder on top of the water.
3. Mix well. A fork is a good thing to use. Stir the KLIM powder and water together until they are completely mixed.
4. See how creamy and good it looks, how it foams like milk straight from the cow.
5. Taste it—KLIM is the nicest, strongest milk you ever tasted.



To keep healthy you must have good milk . . . milk that is safe and pure. KLIM is fresh, pure milk powder, kept clean and safe in a tin. No flies or dust can get into the KLIM tin. It stays fresh in the tin a long time—and DOES NOT GO BAD. Buy KLIM and you will always have strong, safe milk.



Babies fed on KLIM grow big and strong. So give YOUR baby KLIM. Ask the nurse at your clinic about KLIM.



ZOHK, February, 1958

Page 10



tea and coffee taste so good with

NESTLÉ'S MILK

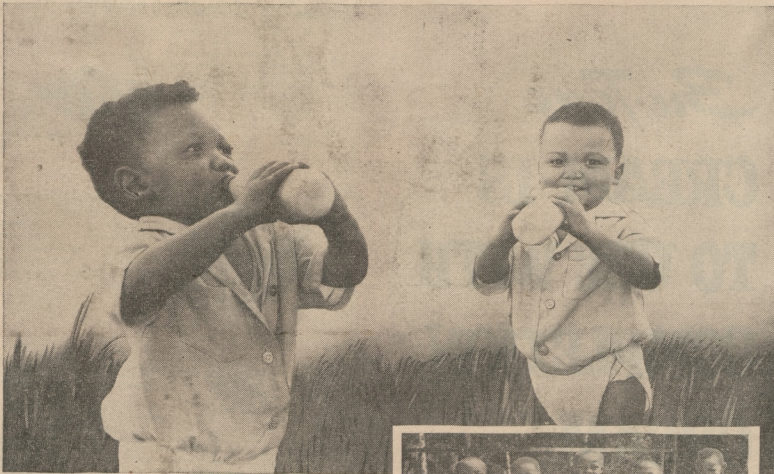
This is the milk which gives such rich sweetness to your tea, coffee and porridge. It's good spread on bread too. Nestlé's Milk is good food, makes you strong and keeps you well.



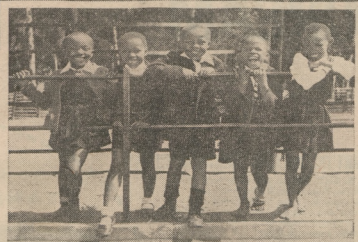
THE WORLD MARCH 10, '56

KLIM IS ALWAYS FRESH

DRUM: MARCH 1956



You know that ordinary milk goes bad in hot weather or if you keep it too long. KLIM is powdered milk that keeps fresh in the special tin. When you mix KLIM with water you have the best pure, clean milk that will keep you strong and healthy.



A tin of KLIM lasts a long time and will make over 6 bottles of wonderful, sweet-tasting, safe milk.

1. To make KLIM POWDER into milk, you must use four "measures" of cold water to one "measure" of Klim Powder. You can use a spoon, cup or tin as a "measure". Pour cold water into a jug or basin and put the right amount of Klim Powder on top of the water.
2. Mix well. A fork is a good thing to use. Stir the KLIM powder and water together until they are completely mixed.
3. See how creamy and good it looks, how it foams like milk straight from the cow.
4. Taste it—KLIM is the nicest, strongest milk you ever tasted.



Babies fed on KLIM grow big and strong. So give YOUR baby KLIM. Ask the nurse at your clinic about KLIM.



NESTLÉ'S MILK on bread is good for you!

This is the MILK that tastes so good spread on bread! Nestlé's MILK is good food . . . gives you energy and strength.

Nestlé's MILK gives rich sweetness to your tea, coffee and porridge.

KEEP HAPPY AND STRONG ON NESTLÉ'S MILK



THE BANTU MIRROR 10-3-56

4754

Collection Number: A427

Collection Name: African newspaper advertisements, 1953-1957

PUBLISHER:

Publisher: Historical Papers Research Archive

Location: Johannesburg

©2014

LEGAL NOTICES:

Copyright Notice: All materials on the Historical Papers website are protected by South African copyright law and may not be reproduced, distributed, transmitted, displayed, or otherwise published in any format, without the prior written permission of the copyright owner.

Disclaimer and Terms of Use: Provided that you maintain all copyright and other notices contained therein, you may download material (one machine readable copy and one print copy per page) for your personal and/or educational non-commercial use only.

People using these records relating to the archives of Historical Papers, The Library, University of the Witwatersrand, Johannesburg, are reminded that such records sometimes contain material which is uncorroborated, inaccurate, distorted or untrue. While these digital records are true facsimiles of paper documents and the information contained herein is obtained from sources believed to be accurate and reliable, Historical Papers, University of the Witwatersrand has not independently verified their content. Consequently, the University is not responsible for any errors or omissions and excludes any and all liability for any errors in or omissions from the information on the website or any related information on third party websites accessible from this website.

This document is part of a private collection held at the Historical Papers Research Archive, University of the Witwatersrand, Johannesburg, South Africa.