

Buntman

7 Haven Road, Greenside, Johannesburg 2193. 646-2908

I

Note for illustrations colour photo-copied for *Museum for Volkerkunde*, November 1993: I refer to the title page of Volume Two.

Using the above process on already imperfect colour photographs of Legae's graphics has resulted in further colour distortions, which I regret but which were unavoidable.

Please note that the tone of the grey background has intensified and that the original works were generally produced on white paper.

Figure 6 should not be such a deep shade of red.

The overall yellow in figures 16 and 24 is totally inaccurate: each should reflect the off-white of the original paper.

II

Comment made in 1990 for fig 19, text p30 1985 The Head, now in the collection of The University of the Witwatersrand. During an informal discussion between Legae, Prof Rayda Becker (curator of the University's Gertrude Posel Gallery) and myself in March 1990, Ezrom Legae revealed that this bronze is not "a face" and is not meant to represent a head. Neither Goodman Gallery's representative nor Legae would comment on the title as it was presented on the original show and when offered for sale by Goodman Gallery. The University of Witwatersrand's gallery has not titled the work. My original reference to female genitals appears, in the light of our later (1990) discussion, to be accurate.

LIST OF VOLUME TWO

List of illustrations and illustrations.

1. Washer Woman, 1968, coll. Egon Gwenther.  
Details of size and medium not available. No 46\*
- 2,3. Young Man, 1969, Bronze, approx 83cm high,  
Goodman Gallery.
4. Secret, 1966, coll. Egon Gwenther.  
Details of size and medium not available. No 47\*  
\*Reprinted in de Jager's Contemporary African  
Art in South Africa.
5. Head, begun late 1960's, Terracotta 1984,  
Cast Bronze 1985, approx. 35cm high,  
Goodman Gallery.

A great deal of difficulty was experienced with the quality of the printing of the photographs. Unfortunately Legae's delicate and subtle use of colour is not accurately portrayed and the basic background of white paper appears too grey in these prints. In those prints where the white is more accurate it resulted in a certain loss of quality in other aspects of the works, and so although dull, these prints were chosen as being able to demonstrate the graphic qualities more clearly.

10. Chicken Series II, 1981, Conte and pencil on paper,  
approx size 30 x 20cm, Goodman Gallery.
11. Death of Freedom, 1978, Conte and pencil on paper,  
approx size 1,75 x 2,60cm, Goodman Gallery.
12. Death of Freedom, 1981, Conte and pencil on paper,  
approx image size 21 x 29cm, Goodman Gallery.

LIST OF ILLUSTRATIONS

Figure

1. Washer Woman, 1966, coll. Egon Guenther.  
Details of size and medium not available. No 46\*
- 2,3. Young Man, 1969, Bronze, approx 65cm high,  
Goodman Gallery.
4. Regret, 1966, coll. Egon Guenther.  
Details of size and medium not available. No 47\*  
\*Reprinted in de Jager's Contemporary African  
Art in South Africa.
5. Head, Begun late 1960's Terracotta 1984,  
Cast Bronze 1985, approx. 35cm high,  
Goodman Gallery.
6. Black Cockerel, The Wall, The Sun, 1977, wash  
and pencil on paper, 41 x20cm, Private Coll. U.S.A.
7. Chicken, 1978, mixed media on paper, 50,5 x69,5cm,  
Gertrude Posel Gallery, University of the  
Witwatersrand.
8. Chicken Series, 1979, Conte and pencil on paper,  
approx size 21,5 x28cm, Goodman Gallery.
9. Chicken Series IV, 1979, Conte and pencil on paper,  
approx size 27 x24cm, Goodman Gallery.
10. Chicken Series II, 1982, Conte and pencil on paper,  
approx size 30 x20cm, Goodman Gallery.
11. Death of Freedom, 1979, Conte and pencil on paper,  
approx size 1,75 x2,60cm, Goodman Gallery.
12. Death of Freedom, 1981, Conte and pencil on paper,  
approx image size 21 x29cm, Goodman Gallery.

Fig:

13. Mangy Dog and Mate III, 1984, guache, conte and pencil on paper, 44x26cm, Goodman Gallery.
14. Nector II, 1983, guache, conte and pencil on paper, 43x35cm, Goodman Gallery.
15. The Anatomy of a Dead Horse, 1983, gauche, pencil and conte on paper, 24x36cm, Goodman Gallery.
16. Man and his Bird, 1983, conte, pastel on paper, 35x40,15cm , Johannesburg Art Gallery.
17. Mask of a Martyr, 1985, bronze, approx size 22,05x10,5cm, edition of 5, Goodman Gallery.
- 18,18A Germination, 1985 bronze, 22,05cm high x 11,05cm across broad front x 10cm deep, Goodman Gallery.
- 19,20 Head, 1985, bronze, 12,05cm high x 8,05cm across cheeks 14cm deep, Goodman Gallery.
- 21,22 For Robyn , 1985, bronze, 35cm high x 14cm at widest point across, x 13cm from front to back, Goodman Gallery.
23. Chicken Series, 1978, conte and pencil on paper, 25x5cm x 43cm, Goodman Gallery.
24. Chicken Series VIII , 1978, pencil and oil wash on paper, 46,5cm x 25,5cm, Johannesburg Art Gallery.
25. Anatomy of a Dead Horse, 1983, conte, pencil on paper, 28cmx43cm, Goodman Gallery.
26. Nector III, 1983, guache wash and conte on paper, 46,05cm x 40cm, Private Collection U.S.A.

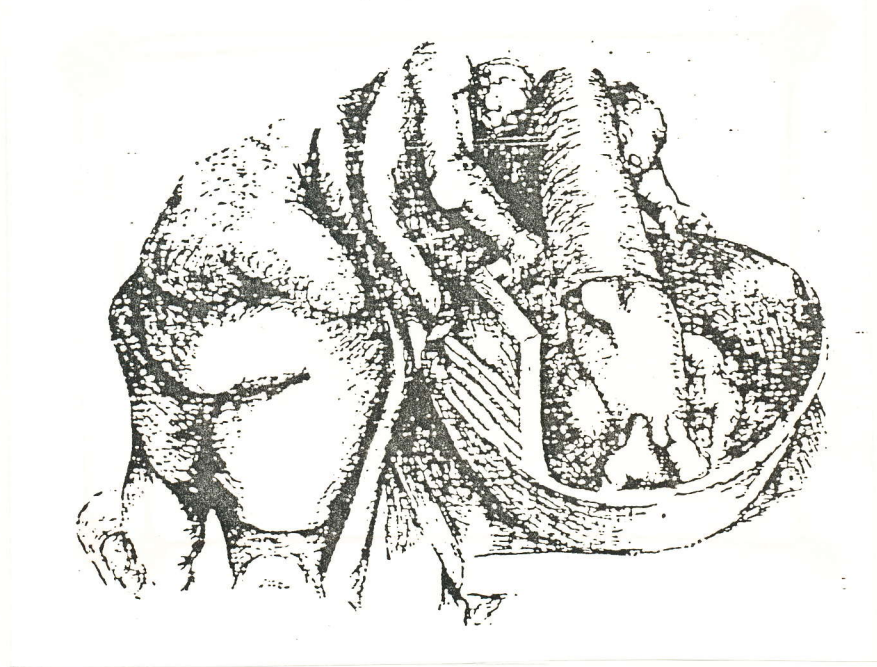


Fig 1



fig. 2



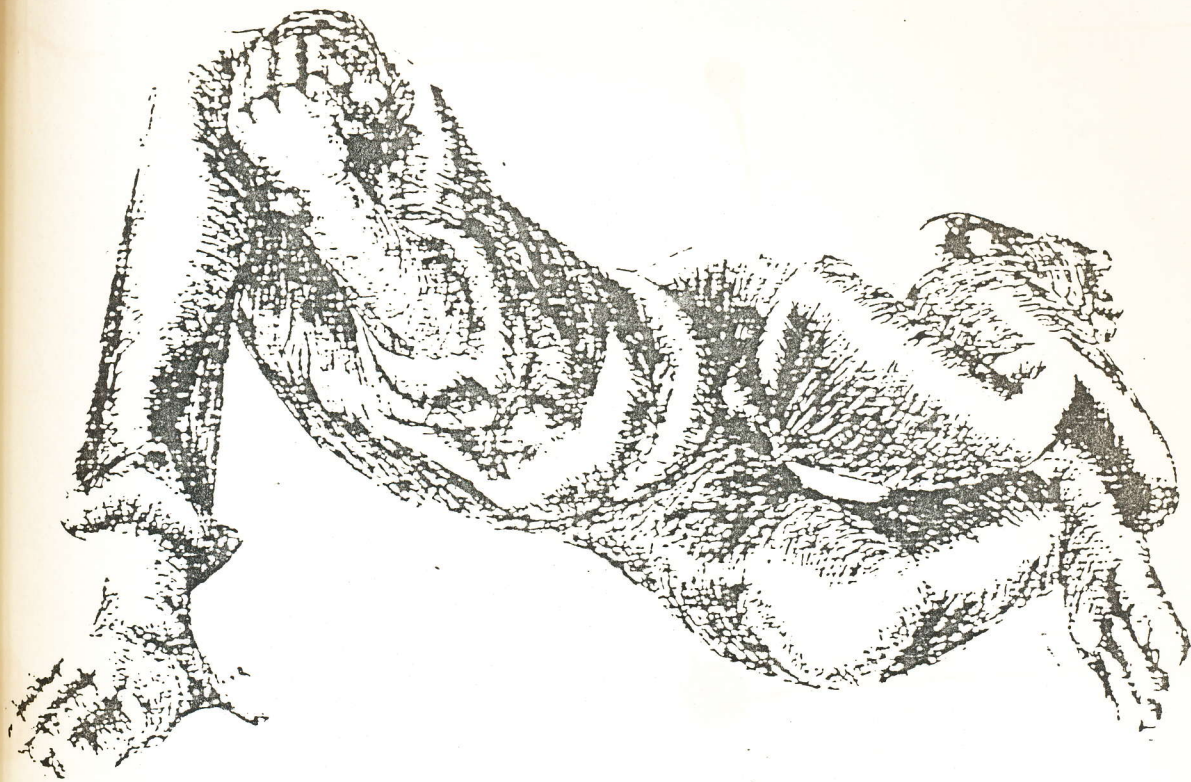


fig 4





fig. 6



fig. 7



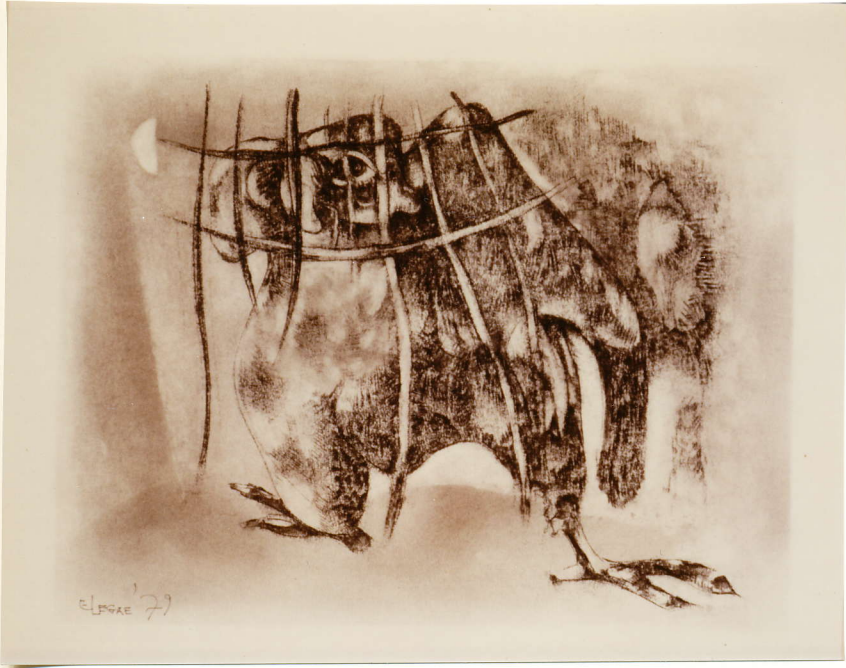


fig. 8



fig. 9



fig. 10



fig. 11



Fig. 12



Fig. 13



Fig. 14



Fig. 15



Fig 16



Fig. 17



Fig. 18





Fig. 19



Fig. 20



Fig. 21





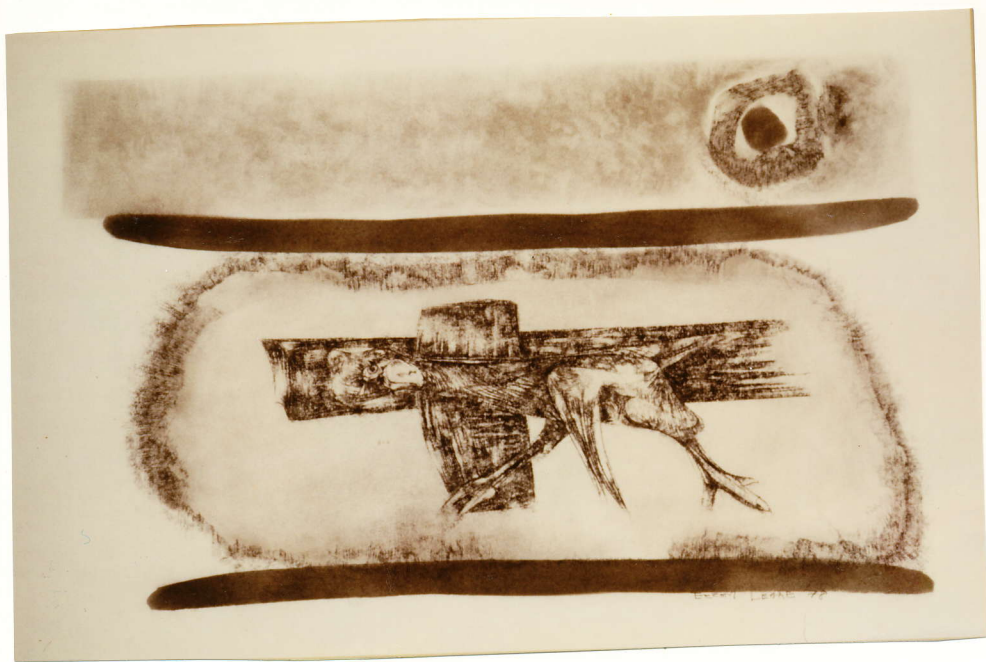


Fig. 23



Fig. 24



fig. 25

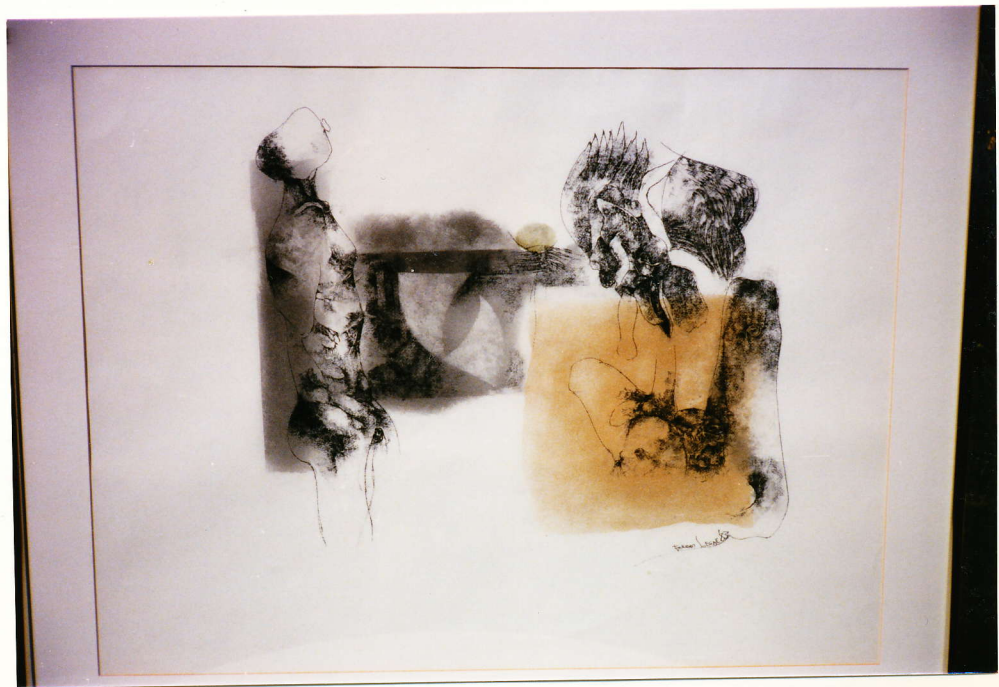


fig. 26