

No Dowers

CT

133

**DIRECTORY OF SOCIAL WELFARE  
AND ALLIED SERVICES FOR  
JOHANNESBURG**

**GIDS VAN MAATSKAPLIKE WELSYN EN  
AANVERWANTE DIENSTE VIR  
JOHANNESBURG**

**FEBRUARY, 1964**

**FEBRUARIE 1964**

**PRICE/PRYS 10c.**

*Corrections for Directory listings, deletions and additions, will be circulated from time to time. Will Welfare Organisations be sure to advise the Co-ordinating Council if the name, address, or function of their agency change.*

*Veranderings in gidsopgawes sal van tyd tot tyd uitgestuur word. Welsynsorganisasies word versoek om die Koördinerende Raad van enige verandering in naam, adres of funksie van hulle agentskap te verwittig.*

**DIRECTORY OF SOCIAL WELFARE AND  
ALLIED SERVICES FOR JOHANNESBURG.**

**GIDS VAN MAATSKAPLIKE WELSYN EN  
AANVERWANTE DIENSTE VIR  
JOHANNESBURG.**

**FEBRUARY, 1964**

**FEBRUARIE 1964**

Published by

**THE JOHANNESBURG CO-ORDINATING COUNCIL OF  
SOCIAL WELFARE ORGANISATIONS, W.O. 1780.**

Congregational Centre, 75, De Korte Street, Braamfontein,  
P.O. Box 8904, Johannesburg. Tel. 34-2645.

724-9369

from July, 1964.

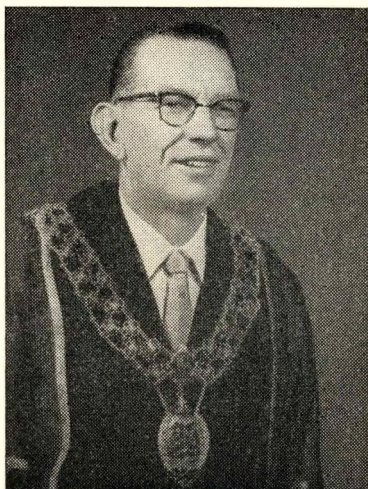
Uitgegee deur

**DIE JOHANNESBURGSE KOÖRDINERENDE RAAD VIR  
MAATSKAPLIKE WELSYNSORGANISASIES, W.O. 1780.**

Congregational Centre, De Kortestraat 75, Braamfontein,  
Posbus 8904, Johannesburg Tel. 34-2645.

724-9369

vanaf Julie 1964.



## Message from the Mayor

CLR. J. F. OBERHOLZER, M.P.C.

The Co-ordinating Council, to use its popular title, is providing a most valuable service by compiling a Directory of Johannesburg Welfare Organisations. Johannesburg has an enviable reputation for the high standard of welfare work which it tackles in every category, mostly with the assistance of dedicated voluntary workers.

I commend the idea and regard this innovation as one which could be followed with good effect throughout South Africa.

I sincerely hope the Directory will become a "best-seller". There can be no doubt of its usefulness as a "guide to the perplexed" in the field of welfare organisations.

The introduction of this Directory is in keeping with the determination to make the Johannesburg Co-ordinating Council of Social Welfare Organisations a dynamic up-to-date body. I wish the project every success and have pleasure in commending the Directory to all who are interested in or support welfare work in Johannesburg.

J. F. OBERHOLZER, M.P.C.  
MAYOR.



## **Goedskap van die Burgemeester**

RDL. J. F. OBERHOLZER, L.P.R.

Die Koördinerende Raad — die algemene benaming van hierdie liggaam — lewer 'n waardevolle diens deur 'n Gids van die Johannesburgse Welsynsorganisasies saam te stel. Johannesburg geniet 'n benydenswaardige aansien vanweë die hoë gehalte welsynwerk wat hy op elke gebied verrig, en veral vir die toegewyde, vrywillige bystand van sy getroue welsynwerkers.

Ek wil die gedagte aan die samestelling van hierdie Gids aanprys: dit is 'n voorbeeld wat ander welsynsorganisasies dwarsdeur Suid-Afrika gerus kan navolg.

Ek vertrou van harte dat die Gids 'n treffer sal wees en dit ly geen twyfel dat die „verwardes” op die gebied van welsynsorganisasies hierdie „Gids” nuttig sal kan gebruik nie.

Die samestelling van hierdie Gids hou tred met die voorneme om van Die Johannesburgse Koördinerende Raad vir Welsynsorganisasies 'n aktiewe liggaam van die tyd te maak. Ek wens die onderneming alle voorspoed toe, en beveel die Gids graag aan by almal wat welsynswerk in Johannesburg ondersteun of daaraan meedoen.

J. F. OBERHOLZER, L.P.R.  
BURGEMEESTER.

## CONTENTS / INHOUDSOPGAWE

	Page
CO-ORDINATING BODIES/KOÖRDINERENDE LIGGAME .....	5
FAMILY WELFARE SERVICES/GESINSORGDIENTE .....	6
HEALTH, FIRST AID & HOSPITAL VISITING SERVICES/GESOND- HEIDS-, EERSTEHULP- EN HOSPITAALBESOEKDIENTE .....	11
OLD PEOPLE'S HOMES & SERVICES/DIENTE EN TEHUISE VIR BEJAARDES .....	14
SERVICES FOR CHILDREN & YOUNG PEOPLE/DIENTE VIR KINDERS EN JONG MENSE .....	17
SERVICES FOR UNMARRIED MOTHERS/DIENTE VIR ONGE- TROUDE MOEDERS .....	18
CHILDREN'S HOMES/KINDERHUISE .....	19
ADOPTION AGENCIES/AANNEMINGSORGANISASIES .....	21
HOMES, SCHOOLS & SERVICES FOR HANDICAPPED CHILD- REN/TEHUISE, SKOLE EN DIENTE VIR GESTREMDE KINDERS .....	22
SERVICES FOR THE HANDICAPPED/DIENTE VIR GESTREMDES	23
SERVICES FOR EX-SERVICEMEN & WOMEN/DIENTE VIR OUDSTRYDERS .....	25
SERVICES FOR ALCOHOLICS/DIENTE VIR ALKOHOLISTE .....	26
SERVICES FOR ANIMAL WELFARE/DIENTE VIR DIERE- BESKERMING .....	27
RECREATIONAL FACILITIES & HOSTELS/ONTSPANNINGS- FASILITEITE EN JEUGTEHUISE .....	27
MISCELLANEOUS/ALLERLEI .....	30
NURSERY SCHOOLS FOR EUROPEAN CHILDREN/BEWAAR- SKOLE VIR BLANKE KINDERS .....	30
CRECHES FOR NON-EUROPEAN CHILDREN/CHRECHES VIR NIE-BLANKE KINDERS .....	32
NATIONAL COUNCILS IN JOHANNESBURG/NASIONALE RADE IN JOHANNESBURG .....	34
DEPARTMENT OF SOCIAL WELFARE & PENSIONS, SOUTHERN TRANSVAAL/DEPARTEMENT VAN VOLKSWELSYN EN PENSIOENE, SUID-TRANSVAAL .....	35
INDEX/INDEKS .....	37

## CO-ORDINATING BODIES/KOÖRDINERENDE LIGGAME

JOHANNESBURG CO-ORDINATING COUNCIL OF SOCIAL WELFARE ORGANISATIONS, W.O. 1780, Congregational Centre, 75 de Korte Street, Braamfontein, P.O. Box 8904, Johannesburg, 34-2645. Co-ordinating body for 120 Welfare Organisations.

JOHANNESBURG COUNCIL FOR ADULT EDUCATION, 17 Natal Bank Chambers, 90 Market Street, 33-0438 (mornings). Co-ordinating body for over 140 organisations that cover all aspects of adult education and leisure time activities including hobbies, music, art, science, fraternal cultural and patriotic societies.

JOHANNESBURG COUNCIL FOR THE CARE OF THE AGED, W.O. 1786, Congregational Centre, 75 de Korte St., Braamfontein, P.O. Box 11184, Jhb., 33-2373. Sponsors & promotes community services to meet the needs of the Aged, co-ordinates work of organisations interested in the care of the Aged, and implements the policies of the S.A. National Council for the Welfare of the Aged where this applies. (See also Old People's Homes & Services).

JOHANNESBURGSE JEUGDIENSRAAD, W.O. 2217, Gilhove Chambers 709, de Villiersstraat 57, Jhb., 23-1481 n.m. Werk saam met Jeugorganisasies en wek belangstelling op in die algemene welsyn van

die jeug. Organiseer die aktiwiteite van die Johannesburg Junior Stadsraad en reël Jeugweek deur alle geaffilieerde liggame in te skakel.

JOHANNESBURG KOÖRDINERENDE RAAD VIR MAATSKAPLIKE WELSYNSORGANISASIES, W.O. 1780, Congregational Centre, de Kortestraat 75, Braamfontein, Posbus 8904, 34-2645. Koördinerende liggaam van 120 welsynsorganisasies.

JOHANNESBURG PLANNING COUNCIL FOR NON-EUROPEAN SOCIAL WELFARE, 80 Albert St., P.O. Box 5382, 23-2101. Co-ordinating body for Non-European Welfare Organisations.

JOHANNESBURGSE RAAD VIR DIE VERSORGING VAN BEJAARDES, W.O. 1786, Congregational Centre, de Kortestraat 75, Braamfontein, Posbus 11184, Jhb., 33-2373. Borg en bevorder gemeenskapsdienste om aan die behoeftes van die bejaardes te voldoen, koördineer die werk van organisasies wat in die sorg van bejaardes belangstel, en bring die beleid van die S.A. Nasionale Raad vir die Welsyn van Bejaardes ten uitvoer waar dit van toepassing is. (Sien ook Tehuise en Dienste vir Bejaardes.)

JOHANNESBURG YOUTH COUNCIL, W.O. 2217, 709 Gilhove Chambers, 57 de Villiers St., 23-1481 p.m. Co-operates with Youth Organisations and stimulates interest in the



This page was sponsored by **NCD**

**NATIONAL CO-OPERATIVE DAIRIES LTD.**

general welfare of youth. Organises the activities of the Johannesburg Junior City Council and promotes Youth Week by incorporating all affiliated bodies.

**NATIONAL COUNCIL OF WOMEN OF SOUTH AFRICA, JHB. BRANCH**, 7th Floor, Union Centre, 35 Pritchard St., 34-2034. Membership of 288 private members and 108 affiliated societies. Provides information to women on all matters affecting the community and the individual. Endeavours to prevent overlapping and to co-ordinate the work of women's organisations and to promote sympathy of effort and purpose.

**TRANSVAAL JEWISH WELFARE COUNCIL**, W.O. 187, 114 Juliana Bldg., 207 Commissioner St., Cr. Nugget St., 22-3971. Co-ordinating body doing Jewish family welfare work in the Transvaal. (See also Family Welfare Services).

**UNION OF JEWISH WOMEN OF SOUTHERN AFRICA, JHB. BRANCH**, W.O. 432, 30 Welfare House, 168 Fox St., 22-6415. Representative body of all Jewish Women's Organisations and acts as liaison between these and all other organisations. (See also Old People's Homes & Services & Hospital Visiting Services.)

## FAMILY WELFARE SERVICES/ GESINSORGDIENTSTE

**ADVENTIST WELFARE SERVICES**, W.O. 531, 17 Louis Rd., Orchards, P.O. Box 61, Orange Grove, 45-2231/2/3. Engages in medical, educational and uplift work.

**ALEXANDRA SERVICE COMMITTEE**, W.O. 1767, 22 Fifth Ave., Alexandra Township, 40-3997. Helps needy people with food, clothes, blankets and finding employment.

**APOSTOLIC FAITH MISSION OF SOUTH AFRICA WELFARE COUNCIL**, W.O. 922, Private Bag, Lyndhurst, 40-7051. Engages in general welfare work and the establishment of Orphanages, Old Age Homes and other welfare institutions. Controls 190 local Dorcas Societies which do social work. (See also Old People's Homes & Services, & Children's Homes).

**ARMESORGRAAD VAN DIE WITWATERSRAND VAN DIE N.G. KERK VAN TVL.**, W.O. 519, De Kortestraat 119, Braamfontein, Posbus 7854, 44-3757. Onderneem gesins- en kindersorgdienste van die

N.G. Kerk. (Sien ook Dienste en Tehuise vir Bejaardes, Jeugtehuise en Dienste vir Ongetroude Moeders.)

**BLANKET GIRLS ASSOCIATION**, W.O. 2145, 5, Erlswold Way, Saxonwold, 41-4544. Raises funds to provide blankets for needy Europeans & Non-Europeans, also food hampers. Assists needy causes either in cash or kind.

**CATHOLIC WOMEN'S LEAGUE OF THE DIOCESE OF JHB.** W.O. 157, Catholic Centre, 98 Kerk Street, Secretary, 43 Alexandra Ave., Craig-hall, 42-6988. Maintains St. Anne's Home for Aged Women at Edenvale, the Catholic Women's League Adoption Society, and a Family Welfare Committee which helps with cases of distress of all races. (See also Adoption Agencies & Old People's Homes & Services).

### *Branches:*

Belgravia, c/o the Presbytery, 422 Main St., 24-3609.

Bezuidenhout Valley, c/o the Presbytery, 32 Kitchener Ave., 24-2757.



Braamfontein, c/o the Presbytery, 16, Stiemens St., 34-4227.

Cathedral Branch, Catholic Centre.

La Rochelle, c/o. the Presbytery, 12, 6th St., 26-4813.

Lynhurst

Malvern East, c/o the Presbytery, Mullins Rd., 25-2688.

Maryvale, c/o the Presbytery, St. Mary's Rd., 45-3438.

Mayfair, c/o the Presbytery, 25, Langerman St., 35-2625.

Turffontein, c/o the Presbytery, Garden St., 32-1868.

Rosebank, c/o the Presbytery, Keyes Ave., 42-2509.

Victory Park, c/o the Presbytery, 3, 3rd Ave., 46-4370.

Yeoville, c/o the Presbytery, 43, Cavendish Rd., 43-1972.

**CENTRAL METHODIST DEACONESS SOCIETY**, W.O. 245, Central Hall, 66 Kruis St., 22-0918. Family rehabilitation and help of genuine needy cases.

**CONGREGATIONAL CHURCH FOOD DISTRIBUTION SERVICE**, W.O. 2472, 75 De Korte St., Braamfontein, P.O. Box 8904, 34-2645. Operates two mobile vans selling groceries at reduced prices to indigent and elderly in city and suburbs.

**CHILD WELFARE SOCIETY**, W.O. 192, Welfare House, 168 Fox Street, P.O. Box 2539. Phone 22-0951. Undenominational. Family and Child Welfare Services for Europeans and Non-Europeans, including case-work services, children's homes, Nursery Schools and day nurseries (creches), foster-care, adoption and care of European unmarried mothers. (See

also Services for Children, Children's Homes, Adoption Agencies, Services for Unmarried Mothers, Nursery Schools and Day Nurseries).

**DEUTSCHER FRAUENVEREIN**, W.O. 1218, P.O. Box 3874, 45-2614. Cares for indigent aged and poor persons of German descent, or families or dependants of same. Runs Old Age home in conjunction with German Evangelical Lutheran Church. (See Old People's Homes & Services.)

**EKUTULENI ANGLICAN CHURCH MISSION**, W.O. 772, Darragh House, Plein St., P.O. Box 1131, 22-1404. Gives relief in food and rent to old and destitute Africans and Coloureds, arranges bursaries, and is responsible for Coloured Nursery school at Newclare.

**ENTOKOZWENI FAMILY WELFARE CENTRE**, W.O. 1501, cr. 12th Ave. & London Lane, Alexandra Township, P.O. Bergvlei, 40-1201. Social Welfare work (approx. 200 cases a month). Nursery school for 150 children and play centre for 600 children. Cooking and sewing classes for women. Recreational and sporting clubs for adolescents. Ante natal, post natal, and baby clinics.

**FAMILY PLANNING CLINIC (TVL BRANCH ASSOCIATION OF THE NATIONAL COUNCIL FOR MATERNAL & FAMILY WELFARE)** W.O. 211. Office: 39 Welfare House, 168 Fox St., 22-9664, 44-6925. Assists persons of all races in scientific methods of contraception. Times and places of clinics:



*This page sponsored by*

**SHELL SOUTH AFRICA (PTY.) LTD.,**  
Cr. Smit & Hoek Sts., Braamfontein.

*European:*

39, Welfare House. Friday 2—4 p.m.  
Wed. 8—11 a.m. (supplies only).

*Non-European:*

Pimville Municipal Clinic. Mon. 9—  
11 a.m.

Moroka: Mon. 11 a.m.—1 p.m.

Welfare House: Tues. 12 noon—3  
p.m.

Shanty: Weds. 9—11 a.m.

Jabavu clinic: Weds. 11 a.m.—1 p.m.

Welfare House: Thurs. 12 noon—  
4 p.m.

Orlando clinic Fri. 2—4 p.m.

Welfare House: Sat. 10 a.m. — 12  
noon.

Coloured clinic: Noordgesig.

Indian clinic: Bree St. Child Welfare.

*Charges:* Europeans R1.00, Non-  
Europeans R0.75, Indigent & T.B.  
cases treated free.

FATHER HUDDLESTON'S CHA-  
RITABLE FUNDS, W.O. 1768, Dio-  
cesan Office, P.O. Box 1131, Jhb.  
Provides blankets during winter  
months for needy Non-European  
families. Assists necessitous Non-  
European children with education ex-  
penses.

FIRST B'NAI B'RITH WOMEN'S  
CHAPTER OF S.A., W.O. 962, P.O.  
Box 9309. Engages in charitable and  
social work, relieving distress, help-  
ing the underprivileged, promoting &  
upholding general welfare and sup-  
porting various Welfare Organisations.  
Participates in a Bantu feeding  
scheme benefitting 1,000 African  
children. Has donated bursary fund  
to Wits. University.

FRIDA HARTLEY SHELTER  
FOR WOMEN, W.O. 933, 97 Regent  
St., Bellevue, 43-3121. Temporary  
shelter for destitute women who are  
housed, fed, and if necessary clothed,  
free of charge.

GUILD OF LOYAL WOMEN,  
W.O. 448, P.O. Box 703, 22-6257.  
Maintains Guild Cottage for needy

children. Undertakes other benevo-  
lent and educational work.

JEWISH WOMEN'S BENEVO-  
LENT & WELFARE SOCIETY,  
W.O. 261, 108/109 Juliana Bldg., 207  
Commissioner St., P.O. Box 4300,  
22-6958/9. Provides relief and reha-  
bilitation to indigent Jewish families;  
arranges for medical attention and  
hospitalisation; gives Educational  
Grants to needy Jewish students; runs  
a Clothing Depot; operates an Occu-  
pational Centre for mentally and  
physically handicapped women. (See  
Services for the Handicapped.)

JOHANNESBURG HOUSING  
UTILITY COMPANY, W.O. 1983,  
700/713 Aegis Bldg., 34, Loveday St.,  
33-1236. Owns Octavia Hill Flats, Cr.  
Mint & Pioneer Rds., Fordsburg,  
which are let to old age pensioners  
and indigent people at reduced ren-  
tals.

JOHANNESBURG INDIAN SO-  
CIAL WELFARE ASSOCIATION,  
W.O. 103, 15 Bree St., P.O. Box 97,  
33-8509. General welfare work — in-  
vestigating adoption cases; mainten-  
ance grants and poor relief cases;  
pensions; family troubles; visiting  
committal children and schools and  
homes, etc.

JOHANNESBURG JEWISH  
HELPING HAND & BURIAL SO-  
CIETY (Chevra Kadisha), W.O. 234.  
"Help-Hand" House, 57 Market St.,  
P.O. Box 1105, 33-5053/4. Provides  
relief and rehabilitation for needy  
members of the Jewish community &  
supervises & controls Jewish Burial  
ground.

JOHANNESBURG MARRIAGE  
GUIDANCE SOCIETY, W.O. 965,  
52 Juta's Bldg., Loveday St., 835-2507.  
Provides counselling for those with  
marriage problems and education for  
young people in preparation for mar-  
riage.

**KINDERSORGVERENIGING**, W.O. 192, Welsynshuis, Foxstraat 168, Posbus 2539, Telefoon 22-0951. Gesinen Kindersorgdienste vir Blankes en Nie-blankes, insluitende maatskaplike-werk dienste, Kinderhuise, Kleuterskole en dagbewaarskole (creches), pleegsorg, aanneming en die versorging van Blanke ongetroude moeders. (Sien ook Maatskaplike Dienste vir Kinders, Kinderhuise, Aannemings-organisasies, Maatskaplike Dienste vir ongetroude moeders, Kleuterskole en Dagbewaarskole.)

**LEGAL AID BUREAU**, Suite 32, Harvard Bldg., 49 Joubert St., 22-9245. Provides legal advice, and where necessary the services of both attorneys and advocates, in civil and criminal cases for people of all races who qualify under the means test and satisfy other conditions as per the constitution.

**MUSLIM SOCIAL WELFARE FUND**, W.O. 938, P.O. Box 8627, 33-1725. Helps indigent Muslims with cash and rent, and works in close co-operation with the Indian Social Welfare Association.

**NATIONAL WAR MEMORIAL HEALTH FOUNDATION**, Witwatersrand Region, W.O. 2549, Hut 8, Union Grounds, P.O. Box 8446, 23-1971/2. Runs Resthaven, holiday centre at St. Michaels-on-Sea, South Coast, Natal, providing seaside holidays for those families who could not otherwise afford them. Subsidises a mobile van for the African Children's Feeding Scheme. Supports Coloured Children's Seaside Fund & Kupugani. Runs Jeppe Creche, 36 Ford St., Jeppestown, for children from 6 months to primary school age. (See

also Nursery Schools and Day Nurseries.)

**NATIVE WELFARE SECTION**, Non-European Affairs Dept., P.O. Box 5382, Albert St., Jhb. 23-2101. Provides family welfare services in the townships. A section deals with the families of T.B. patients.

**NON-EUROPEAN AFFAIRS DEPARTMENT WELFARE FUND**, Albert St., P.O. Box 5382, Jhb. 23-2101. Receives money accruing from welfare and recreational activities carried on by the Non-European Affairs Department as well as donations and gifts from any source. Provides assistance for destitute and needy individuals and families. Provides funds for social and welfare activities.

**ONDERSTEUNINGSRAAD VAN DIE NEDERDUITS HERVORMDE KERK**, T.O.-Gebou, Simmondsstraat 95, Braamfontein, 34-4425. Gesinsprobleme en gesinsorgdiens.

**RAND AID ASSOCIATION**, W.O. 52, 42, Annet Rd., Cottesloe. Private Bag 3, Cottesloe, 31-1125, 31-1126, 31-1259. Family Welfare Services. Care and treatment of infirm aged at: Bramley Cottage, Bramley House, Cransley House, Helen House, Jordan House, Reid House; care and treatment of the alcoholic at: Cottesloe Hostel, Mount Collins, Northlea, the Annexe, William Mitchell House. (See also Old People's Homes & Services. & Services for Alcoholics.)

**RAND DAILY MAIL CHRISTMAS FUND**, W.O. 218, 174, Main St., Jhb., 22-4141. Provides food parcels and brings a little cheer into the lives of needy and underprivileged

---

*This page was sponsored by*

**ANGLO-TRANSVAAL CONSOLIDATED INVESTMENT COMPANY, LIMITED**

---

people of Johannesburg and the Reef at Christmas time. Each application for assistance is carefully investigated by recognised Welfare or Church officers. Coloured and African people are helped as well with Christmas parcels through Church bodies.

**RANDSE HULPVERENIGING**, W.O. 52, Annetweg 42, Cottesloe, Privaatsak 3, P.K. Cottesloe, 31-1125, 31-1126, 31-1259. Familiewelsynsdiens. Versorging en behandeling van swak bejaardes by Bramley Cottage, Bramley House, Cransley House, Helen House, Jordan House, Reid House. Versorging en behandeling van alkoholiste by: Cottesloe Hostel, Mount Collins, Northlea, William Mitchell House, the Annexe. (Sien ook Tehuise en Dienste vir Bejaardes en Dienste vir alkoholiste.)

**REFUGEE ORGANISATION OF SOUTH AFRICA**, W.O. 2335, "Dunwell", 35 Jorissen St., Braamfontein, P.O. Box 672, 44-1682. Assists with the alleviation of the world problem of refugees, and, as and when necessary, provides assistance to refugees in South Africa.

**ST. VINCENT DE PAUL SOCIETY**, W.O. 900, P.O. Box 428, Jhb. Assistance to the poor in their homes.

**SALVAGE PRODUCTION SOCIETY OF ST. VINCENT DE PAUL**, W.O. 900). P.O. Box 428. Raises funds for poor relief by disposal of scrap.

**SALVATION ARMY, THE**, 131 Commissioner St., P.O. Box 1018, Jhb., 22-4914. Provides Family Welfare Services and operates an International Missing Persons Investigation Bureau. Accommodation for men, women and children is provided in Homes situated in Johannesburg for all persons in need, irrespective of their creed. (See also Old People's Homes & Services, Children's Homes, & Recreational Facilities and Hos-

tels for Young People & Services for Unmarried Mothers.

**SOCIAL SERVICES ASSOCIATION**, W.O. 313, Welfare House, 168 Fox St., 22-9751/2. Rehabilitates persons of all races, after discharge from prison. Helps care for families of prisoners and acts as liaison between families and prisoners. Prison visiting in preparation for discharge.

**SOUTH AFRICAN JEWISH BOARD OF DEPUTIES. WELFARE DEPT.**, Sheffield House, 29 Kruis St., Cr. Main St., P.O. Box 1180, 22-7206. Furnishes individuals with information and guidance but does not provide financial assistance.

**S.A. VROUEFEDERASIE**, W.O. 288 STREEK RAND SENTRAAL, Harmony, Saratogalaan, Doornfontein, 44-0535. Gesinsversorging en rehabilitasie. (Sien ook Dienste en Tehuise vir Bejaardes, Aannemingsorganisasies, Jeugtehuise. Bewaarskole en Kleuterskole).

**SUNSHINE CLUB**, W.O. 654. Hon. Sec.: 220 St. Frusquin St., Malvern, 25-4538. Arranges motor trips, outings and entertainment for deserving adults and children.

**TOC H (S.A.) MEN'S SECTION**, W.O. 400, P.O. Box 3624, 33-0405. Renders service to the community by running clubs for old and young, visiting hospitals, and helping people of all races.

**TOC H (S.A.) WOMEN'S ASSOCIATION**, W.O. 50, 605 Montrose House, 36 Pritchard St., P.O. Box 3624, 33-0419. Helps destitute families and old age pensioners, reads to blind, visits hospitals, does therapy work at Rietfontein T.B. Hospital.

**TRANSVAAL JEWISH WELFARE COUNCIL**, W.O. 187, 114 Juliana Building, 207 Commissioner St., Cr. Nugget St., 22-3971. Runs a Family Welfare Agency which deals with all

aspects of family life and family problems. Clients are helped to obtain pensions, maintenance grants, family allowances and other facilities available in the community. Financial relief is also given in some cases to indigent Jewish clients. (See also Coordinating Bodies.)

**TRANSVAAL QUAKER SERVICE FUND.** W.O. 2316, P.O. Box 7205, 24-4168 (mornings). Exists for the promotion of welfare of indigent, handicapped or maladjusted persons and the prevention of indigency and social maladjustment.

**VROUE - EN - MOEDERBEWEGING VAN DIE A.T.K.V. (S.A.S. & H.).** St. Johnstraat 3, Upper Houghton, 44-0222. Versorg behoeftige spoorweggesinne en stuur spoorwegkinders en gesinne na hul kinderstrandhuis naby Mosselbaai.

**WITWATERSRAND CAMBRIAN SOCIETY BENEVOLENT FUND,** W.O. 1064. P.O. Box 3552, 33-1705.

Operates on behalf on Welsh people in needy circumstances.

**WITWATERSRAND HEBREW BENEVOLENT ASSOCIATION,** 117 Jeppe St., 835-1291. Makes loans free of interest to needy Jewish people.

**WELSYNRAAD VAN DIE APOSTOLIESE GELOOFSENDING,** W.O. 922, Privaatsak, Lyndhurst, Jhb. 40-7051. Doen algemene welsynswerk en beheer Weeshuise, Tehuise vir Bejaardes en ander Welsynsinrigtings. Hou toesig oor 190 plaaslike Dorcasverenigings wat maatskaplike werk doen. (Sien ook Dienste en Tehuise vir Bejaardes en Kinderhuise.)

**WITWATERSRAND SHANGAAN WELFARE ASSOCIATION,** W.O. 2429, Meadowlands 536, Zone 5, Meadowlands. Phone: 989, Ext. 110, 150. Cares for old people by giving food and advice. Cares for the bereaved. Advice on facilities available for cripples. Cares for children in creches.

## **HEALTH, FIRST AID, & VOLUNTARY HOSPITAL VISITING SERVICES/GESONDHEIDS-, EERSTE-HULP-, EN VRYWILLIGE HOSPITAALBESOEK-DIENSTE**

**AFRICAN CHILDREN'S FEEDING SCHEME,** W.O. 300, 230-233 Transvalia Bldg., 21 Stiemens St., Braamfontein, 44-9634. General feeding of children. Gives health education with particular reference to nutrition. Sells nutritious foodstuffs to needy cases. (See also Services for Children.)

**ALEXANDRA ANTI-TUBERCULOSIS ASSOCIATION,** W.O.

1279, 17 Natal Bank Chambers, 90 Market St., 33-0438. Hospital in Alexandra with 144 beds; also helps families where breadwinner is down with the disease, paying rent and feeding the family.

**ALEXANDRA HEALTH CENTRE & UNIVERSITY CLINIC,** W.O. 274, 2nd Ave., Alexandra Township, P.O. Bergvlei, 40-1231. Medical, surgical, ante-natal, post-natal and baby

---

*This page was sponsored by*

**SOUTHERN BUILDING SOCIETY**

---

clinics, also district nursing service.

**BARAGWANATH HOSPITAL COMFORTS COMMITTEE**, W.O. 1855. Sec.: Mrs. V. Garvey, 2 Crescent Drive, Westcliff, 41-3708. Supplies comforts to patients at Baragwanath, provides clothes and sweets for the children and paraplegics. All patients provided with presents at Christmas, also entertainment. In addition, helps Coronation, Edenvale, and St. John's Eye Hospitals.

**CATHOLIC FRIENDS OF TARA ASSOCIATION**, W.O. 2410, 16 Keyes Ave., Rosebank, 42-2509. After-care and rehabilitation of patients of Tara Hospital & assistance to improve and maintain their health.

**ENTOKOZWENI** — See Family Welfare Services.

**JEWISH SOCIETY FOR VISITING THE SICK**, W.O. 669, 506 Fanora House, Cr. Rissik & Kerk Sts., P.O. Box 5864, 835-2648. Visits sick, irrespective of creed, in European hospitals, nursing homes and institutions, providing reading matter, etc. Runs camp for indigent Jewish children near Muizenberg.

**JOHANNESBURG OPTOMETRIC CLINIC**, W.O. 547, P.O. Box 4790. Tests eyes of indigent people and supplies spectacles and other visual aids free of charge (work undertaken at Wits. Technical College.)

**KUPUGANI (NUTRITION CORPORATION LTD.)**, 507 Locarno House, Loveday St., 34-2028, 34-1530, 34-1539. Aims and objects are the combating of malnutrition through the use of high protein foods and agricultural surpluses which become cheaper through bulk buying. Acts as a national distribution and co-ordinating body.

**MAGEN DAVID ADOM IN SOUTHERN AFRICA**, W.O. 169, 419/20/21 Zionist Centre, Cr. Banket & de Villiers St., P.O. Box 9228, 22-6844, 23-5731. Branch of Volun-

tary First Aid Association of Israel, which runs First Aid, Ambulance and Blood Transfusion Services, etc. Has fully trained First Aid personnel, both senior and junior, who attend functions when called upon to do so. Assists in humanitarian work, such as help in Aged Homes.

**MENTAL HEALTH SOCIETY OF THE WITWATERSRAND**, 421 Empire Bldgs., Kruis St., 22-2249. Renders a psychiatric service to the community by running weekly clinics and a day centre, and investigates cases. Helps in rehabilitation of discharged patients from mental hospitals and assists generally with maladjusted persons.

**QUEEN VICTORIA HOSPITAL WOMEN'S WELFARE COMMITTEE**, W.O. 249, Sec.: 52 Kilkenny Rd., Parkview. Makes garments for babies of needy mothers and supplies Christmas cheer to all patients.

**RED CROSS TIME CLUB**, Red Cross House, 77 de Villiers St., 22-8251. Voluntary workers assist public at Hospitals. Promotive health services among the aged. (See also Recreational Facilities.)

**ST. JOHN AMBULANCE ASSOCIATION**, W.O. 328, Witwatersrand and Southern Transvaal Centre, Cr. Leyd & Loveday Sts., Braamfontein, P.O. Box 744, 23-8151. Teaches and trains men, women, boys, and girls, of all races in First Aid, Home Nursing, Child Welfare, Hygiene, in schools, townships and factories. Boys and girls also taught public service, road safety, knowledge and care of animals, swimming, etc. When qualified, members undertake first aid duties at public gatherings, sports meetings, etc. Maintains fleet of 8 ambulances which are detailed for regular public duty at sports meetings etc., also undertake long distance trips.

ST. JOHN OPHTHALMIC FOUNDATION, W.O. 1390, P.O. Baragwanath, Tvl., 32-2264. Maintains a central hospital and mobile clinics for the prevention and treatment of blindness. Trains Bantu ophthalmic nurses. Takes patients from all over the Republic and the Protectorates, and all treatment is free. Conducts research on a national basis and adopts all such steps as are conducive to fighting blindness.

SAMARITAANSE FONDS, SUID-RANDSE HOSPITAAL, W.O. 2349, P/a Suid-Randse Hospitaal, Rosettenville, 26-5821. Voorsien die Hospitaal maatskaplike Werkster met nodige fondse om armsorg in die hospitaal toe te pas, soos verskaffing van voedsel, klere en apparate vir die behoeftigste gevalle.

SANTA. JHB. BRANCH, W.O. 1923, Voortrekker Bldgs., 18 Hoek St., 22-2548. Care work among hospitalized T.B.'s and their dependents. Rehabilitation of Tuberculosics after hospitalisation. Management and control of Charles Hurwitz Centre at Baragwanath. Mass X-Ray surveys of European and Non-European population.

S.A. NOODHULPLIGA, W.O. 280, Jutastraat 90, Braamfontein, 835-3159. Opleiding in noodhulp en verwante vakke, soos tuisverpleging, moederkunde, kindersorg; optrede in gevalle van noodtoestande wat ontstaan deur

natuurlike rampe; verrigting van openbare dienste by byeenkomste.

S.A. RED CROSS SOCIETY, Southern Transvaal Region, W.O. 414, Red Cross House, 77 de Villiers St., P.O. Box 3266, 22-8251. Maintains the following services: five Old Aged Homes (Sandringham, Springs, Brakpan, Germiston and Heidelberg); auxiliary ambulance service; five clinics (Kliptown, Breyten, Roodebank, Ermelo, Newtown); transport service for African crippled children; sick bay at Glenmore seaside resort; dental clinic transport service; organises air ambulance transport, provides training in first aid and home nursing; maintains a Home Aid Service; undertakes first aid duties at public gatherings, hospitals, etc.; medical loan depot; junior Red Cross movement; Time Club; emergency service; 22 first aid posts.

TRANSSVAAL MEMORIAL HOSPITAL FOR CHILDREN. LADIES VISITING COMMITTEE, W.O. 846. Hon. Sec.: 23 North Rd., Dunkeld. Supplies comforts not supplied by the Hospital, and visits the patients.

UNION OF JEWISH WOMEN — See Old People's Homes & Services.

UNITED SISTERHOOD, W.O. 160, Temple Emmanuel Centre. 38 Oxford Rd., Parktown. 41-2409. Women's association of the United Progressive Jewish Congregation of Jhb. Hospital visiting. (See also Day Nurseries.)

---

“PRINCESS” AND “SERVUS”

*Merchandise is exclusive to*

**W O O L W O R T H S**

Branches throughout the Republic

---

# OLD PEOPLE'S HOMES & SERVICES/DIENSTE EN TEHUISE VIR BEJAARDES

APOSTOLIC FAITH MISSION OLD AGE HOME, W.O. 922, Private Bag, Lyndhurst, 40-3514 (Office 40-7051). Cares for 50 old people (pensioners & underprivileged). (See also Family Welfare Services and Children's Homes.)

APOSTOLIESE GELOOF SENDING OUETEHUIS, W.O. 922, Privaatsak, Lyndhurst, 40-3514. (Kantoor 40-7051). Versorg 50 ou mense (gepensioneerdes en minderbevooregtes). (Sien ook Gesinsorgdienste, en Kinderhuise.)

ATHONIAN RETREAT HOME, 25 Sinclair St., Belgravia, 24-5911. Home for 12 old age pensioners, under the auspices of the Malvern and Belgravia Boys' and Girls' Club. (Malvern & Belgravia Boys' & Girls' Club — see also Recreational Facilities & Hostels for Young People.)

BANTU REFUGE, W.O. 39, Shacklock St., P.O. Box 39, Germiston, 51-1427. Home for aged, destitute & infirm Bantu. Approximately 251 residents, of whom 57 are women. Only large institution of its kind in the Transvaal, and caters for about 50% of the Republic. Residents, before admittance, have no traceable relatives and no home.

BOND VAN RANDSE MOEDERS, W.O. 672, Hydehof 201, Killarney, Jhb., 41-2727. Gee kosteloos vakansie op Warmbad aan ou vergete moeders.

BRIXTON OUETEHUIS, Fulhamweg, Brixton, 35-1541. Tehuis vir bejaardes beheer deur die S.A. Vrouefederasie.

CANDLELIGHT CLUB, 410 Duncan House, 11 de Villiers St., Jhb., 33-9457 (mornings only), affiliated to the Johannesburg Council for the Care of the Aged, W.O. 1786. Assists and cares for needy and lonely aged and arranges outings and entertainment for them. Club room in town.

CANDLELIGHT CLUB, Duncanhuis 410, de Villiersstraat 11, Johannesburg, 33-9457 (slegs voormiddag), geaffiliëer by die Johannesburgse Raad vir die Versorging van Bejaardes, W.O. 1786. Help en versorg behoeftige en eensame oues van dae en reël uitstappies en vermaaklikhede vir hulle. Klubkamer in die stad.

COLONEL ROWLAND HOME, 20 Pine Rd., Bedfordview, 53-1525. Run by Deaf and Dumb Association, W.O. 12, 119 de Korte St., Braamfontein, P.O. Box 3343, 44-7484, for 13 elderly deaf-mutes and deaf-blind. (Deaf & Dumb Association, — see Services for Handicapped people.)

DEAN' SHELTER, W.O. 53, 63 Sherwell St., Doornfontein, 44-3140. Comprises: "Deansgate", place of refuge for 30 men who are destitute and need urgent assistance; also "God's Providence House", a permanent home for 35 male old age pensioners. Free meal provided at 12 noon on Sundays for people of no fixed residence.

GERALD FITZPATRICK HOUSE, W.O. 841, 51 Gordon Rd., Bertrams, 24-2822. Home for 84 elderly women administered by the Women's Civic Benevolent Society, Hon. Sec.: 174 Park Crescent, Turffontein, 32-2456.



GERMAN OLD AGE HOME, W.O. 1218, 7 Lewis Rd., Richmond, 31-2912. Home for old people of German descent run by the Deutscher Frauenverein, P.O. Box 3874, in conjunction with the German Evangelical Lutheran Church.

HEBREW CONGREGATION ETZ-CHAYIM, W.O. 1752, 20 Barnato St., Berea, 44-4017. Visits the Jewish Aged Home at Sandringham every week.

HELLENIC OLD AGE HOME, 102 2nd St., Orange Grove, 45-4296. Home for 8 old people of the Greek community.

HOLIDAY HOMES FOR THE AGED, W.O. 1927, 34 Welfare House, 168 Fox St., 22-8562. Provides holidays for old people living in rooms, Homes, or with relatives, also recuperative holidays for convalescents. Holiday Home at Wallishaven, P.O. Box 52, Magaliesburg.

JOHANNESBURG COUNCIL FOR THE CARE OF THE AGED, W.O. 1786, Congregational Centre, 75. De Korte St., Braamfontein, P.O. Box 11184, 33-2373. Provides services for the Aged to relieve their economic, domestic and physical problems. (See also Co-ordinating Bodies.)

JOHANNESBURGSE RAAD VIR DIE VERSORGING VAN BEJAARDES, W.O. 1786, Congregational Centre, De Kortestraat 75, Braamfontein, Posbus 11184, 33-2373. Verskaf dienste vir die bejaardes om hul ekonomiese, huislike en liggaamlike probleme te verlig. (Sien ook Koördinerende Liggame.)

MARY ANSTEY OLD AGE HOME, Tucker St., Albertville. Run by Ebenezer Congregational Church for 10 elderly Coloured women.

MOTH MEMORIAL COTTAGE HOMES, Jay St. & Ibis St., Cottesloe, 31-3059. 16 cottages for 32 elderly ex-servicemen and their wives.

MOTHTWA HAVEN, W.O. 725, 54 Bunting Rd., Cottesloe, 31-3465. Home for 20 women pensioners run by the MOTH Women's Auxiliary.

NAZARETH HOME, W.O. 1790, 1 Webb St., Yeoville, 43-2021. Run by the Poor Sisters of Nazareth for aged, infirm and destitute poor of both sexes. (See also Children's Homes.)

ONS TUIS, W.O. 312, Observatory-laan 1, Observatory, 43-1524, 43-6371. Rusoord vir oues van dae.

ORLANDO HOME FOR THE AGED, 6501 Mooki St., Orlando East. Sec.: P.O. Box 15, Orlando East. Home for 28 elderly men and women run under the aegis of the Witwatersrand Welfare Committee of Bantu Women, W.O. 2125.

OUR PARENTS HOME, W.O. 65. Cr. Spring & High Rds., Gardens, 728-1301. Home for an average of 170 aged of the Jewish Faith of both sexes.

PIONEER HOUSE, W.O. 941, 39 Haswell St., Oaklands. 728-1627. Home for up to 38 old people of both sexes.

QUEEN ALEXANDRA HOME, W.O. 847. Cr. 16th St. & 8th Ave., Orange Grove. 45-2080. Home for 32 elderly ladies.

QUEENSHAVEN, Jhb. Coronation Memorial Home, W.O. 1648. Cr. Klipriviersberg & Outspan Rds., South Hills, 26-4298. Home for 250 elderly men & women, 200 in cottages and 50 in infirmary.

RAND AID ASSOCIATION HOMES (RAND AID ASSOCIA-

---

*This page was sponsored by*

**PFIZER LABORATORIES SOUTH AFRICA (PTY.) LTD.**

---

TION — see Family Welfare Services.) Bramley House & Cottages, 71 Linden Rd., Bramley, 40-6646, 86 aged persons; Cransley House, Falcon St., Cottesloe, 31-1611, 31-1587, 61 elderly ladies; Helen House, 71 Linden Road, Bramley, 40-6646, 83 infirm aged; Jordan House, Main Road, Newlands, 27-2608, 60 infirm Coloured aged; Reid House, P.O. Box 20, Bergvlci, 40-2211, 110 infirm aged men.

RANDJESLAAGTE (JOHANNESBURG) JUBILEE MEMORIAL, W.O. 1382, Randjeslaagde Rd., Highlands North, 40-3045. Accommodates 150 ageing people who have been resident in Johannesburg for over 20 years, who are over 60 and who are entitled to the Old Age Pension.

RANDSE HULPVERENIGING TEHUISE (RANDSE HULPVERENIGING — sien Gesinsorgdienste.) Bramley House en Cottages, Lindenweg 71, Bramley, 40-6646, 86 bejaardes; Cransley House, Falconstraat, Cottesloe, 31-1611, 31-1587, 61 ou dames; Helen House, Lindenweg 71, Bramley, 83 swak bejaardes; Jordan House, Mainweg, Newlands, 27-2608, 60 swak Kleurling bejaardes; Reid House, Posbus 20, Bergvlei, 40-2211, 110 swak ou mans.

RAND WOMEN PIONEERS, W.O. 665, P.O. Box 1176, Jhb., 835-7697. Raises money to distribute comforts to old people and residents of old age homes.

RED CROSS TIME CLUB, — see Health, First Aid & Hospital Visiting Services.

ST. ANNE'S OLD LADIES RESIDENCES, Germiston Main Rd., Edenvale, 53-2003. Run by the Catholic Women's League for 59 elderly ladies. (Catholic Women's League, see Family Welfare Services.)

SALVATION ARMY HOMES (Salvation Army — see Family Welfare Services). The Salvation Army Men's Hostel, 2 Simmonds St., 33-6648. Accommodation for 149 European men (Pensioners & Casuals.) Murray House, 493 Marshall St., Belgravia, 24-7453. Accommodation for 21 women (Pensioners and Casuals.)

S.A. NURSES TRUST FUND. W.O. 1009, 101 Rosebank Mews, 175 Oxford Rd., Rosebank, 42-2710. Provides Homes for aged nurses and assists them by giving monthly grants to augment pensions. Johannesburg Home:

NORTHCLIFF HOUSE, Lawley Avenue, Northcliff, for 18 residents.

S.A. RED CROSS SOCIETY'S HOME: (S.A. Red Cross Society — see Health, First Aid & Hospital Visiting Services.) Sandringham Home for Ex-Servicemen, Modderfontein Rd., Private Bag, Sandringham, 45-1046, for 31 Ex-Servicemen.

UNION OF JEWISH WOMEN, JHB. BRANCH, W.O. 432, 30 Welfare House, 168 Fox St., Jhb. 22-6415. Friendship Clubs & Entertainment for senior citizens and the lonely. Hospital Visiting. Provides Bursaries, adult education and service to the handicapped and underprivileged.

WITWATERSRAND JEWISH AGED HOME, W.O. 844, George Avenue, Sandringham, Private Bags Nos. 1 and 2, Sandringham, 45-6273/8. Home for 550 of the Jewish Faith.

WITWATERSRANDSE OUETE-HUIS, Escombelaan 36, Parktown, 31-1638, 31-1595. Tehuis vir bejaardes beheer van die Armesorgraad van die Witwatersrand. (Sien gesinsorgdienste.)

## SERVICES FOR CHILDREN & YOUNG PEOPLE/ DIENSTE VIR KINDERS EN JONGMENSE

**AFRICAN CHILDREN'S FEEDING SCHEME**, W.O. 300, 230-233 Transvalia Bldg., 21, Stiemens St., Braamfontein, 44-9634. Operates feeding centres and mobile van service in African townships. Undertakes feeding of children in schools and encourages and assists schools to run their own feeding schemes. (See also Health, First Aid & Hospital Visiting Services.)

**AFRICAN SELF HELP ASSOCIATION**, W.O. 1499, 212 Transvalia Bldg., 21 Stiemens St., Braamfontein, 44-9690. Advises and assists urban African women in their effort at Self Help, which includes the running of 32 Day Nurseries in the townships and also a Youth Club. (See also Day Nurseries, and Recreational Facilities.)

**ASSOCIATION FOR THE CARE OF COLOURED YOUTH**, W.O. 2396, P.O. Box 189, Fordsburg, Jhb., 27-4249. Protects the interests and promotes the well-being of the Coloured Youth of South Africa, by providing accommodation for low paid workers, institutional care for children in need of care and places of care. Promotes welfare of indigent, handicapped, or maladjusted. Runs Dorcas Creche (see Nursery Schools & Day Nurseries.)

**CHILD WELFARE SOCIETY**, W.O. 192. Welfare House, 168 Fox Street, Phone 22-0951. Undenominational. Family and child welfare services for Europeans and Non-Europeans, including case-work services, children's homes, nursery schools and

day nurseries (creches), foster-care, adoption and care of European unmarried mothers. (See also Family Welfare Services, Children's Homes, Adoption Agencies, Services for Unmarried Mothers, Nursery Schools and Day Nurseries.)

**ENTOKOZWENI FAMILY WELFARE CENTRE**, See Family Welfare Services.

**HOMES & ORPHANS FUND**, W.O. 952, 11 Kerk St., P.O. Box 8021, 33-8242. Provides 10 children's homes with clothing, furniture, furnishings, repairs, etc., also educational assistance, transport, sweets, presents, etc.

**JOHANNESBURG CHILD GUIDANCE CLINIC**, W.O. 185, 6th Floor, Salstaff Bldgs., Cr. Smit & Joubert Sts., 22-4929. Provides treatment and management of emotional problems in children.

**JOHANNESBURG & DISTRICT CAPE COLOURED WELFARE SOCIETY**, W.O. 667, P.O. Box 9565, Sec.: 33-6383. Operates creche at Coronationville & Day Nursery at Noordgesig.

**K I N D E R S O R G V E R E N I G I N G**. W.O. 192. Welsynshuis, Foxstraat 168, telefoon 22-0951. Gesin- en Kindersorgdienste vir Blankes en Nie-blankes, insluitende maatskaplike werk dienste, kinderhuise, Kleuterskole en dagbewaarskole (creches), pleegsorg, aanneming en die sorg van Blanke ongetroude moeders. (Sien ook Gesinsorgdienste, Kinderhuise. Aannemingsorganisasies, Maatskaplike Dienste vir

---

*This page was sponsored by*

**JOHN ORR & CO. (TRANSVAAL) LIMITED**

---

Ongetroude Moeders, Kleuter- en Dagbewaarskole.)

**KINDERSTRAND, W.O. 51,** A.T.K.V.-Gebou 712, h/v Wolmarans- & Eloffstraat, Braamfontein, 22-2442, Posbus 4881. Om aan mindergegoede kinders huisvesting en skoolonderrig te verskaf by ons kinderstrandoord te Glenmore, Suidkus, Natal.

**MISSION SCHOOLS FEEDING (SOCIETY OF ST. VINCENT DE PAUL, W.O. 900),** P.O. Box 428, Jhb. Feeding of 12,000 children in Catholic Mission Schools.

**RED CROSS TIME CLUB,** Red Cross House, 77 De Villiers St., 22-8251. Befriending children mainly in institutions.

**SAVE THE CHILDREN FUND,** Jhb. Branch, W.O. 161, 29, Natal Bank Chambers. 90 Market St., 835-2878. Raises money to help children in need, irrespective of race, creed or nationality.

**S.A. CHRISTMAS STAMP FUND,** W.O. 728, P.O. Box 2885, 33-6861. Accommodates & educates the children of tuberculotic parents of all races.

**S.A. ORT OZE, W.O. 20, 93** Shakespeare House, Commissioner St., P.O. Box 5883, Jhb., 33-9171. Vocational guidance and job placement body — testing services available to all at nominal fee of R1.05.

Grants & bursaries for Jewish students and apprentices.

**STAR SEASIDE FUND, W.O. 215,** 41 President St., P.O. Box 1014, 33-3111. Provides parties of 125 less-privileged children with two weeks' holiday at Durban, at no cost to parents.

**SUNBEAM CHILDREN'S CLUB,** W.O. 332, 43, 20th St., Parkhurst, 42-3760. Arranges outings for under-privileged children, e.g. picnics in the country. Visits homes of children to find out and supply needs. Furthers education of promising children.

**TRANSVAAL COLOURED CHILDREN'S SEASIDE FUND, W.O. 281,** Tafelberg Ave., Bosmont Treasurer: 27-4728. Provides holidays for sick and poor children at Transhaven in Durban. Accommodation for 60 children per term, and education is provided.

**WATERVAL ISLAMIC INSTITUTE.** Main Pretoria Rd., Nr. Juk- skei Bridge, P.O. Box 1, Jhb., 40-1612. Runs school for 600 children including indigent and committed children for whom clothing, education, etc., are provided free of charge.

**YOUTH ADVICE BUREAU (JOHANNESBURG, W.O. 2218,** 5 Meischke's Bldgs., Cr. Market & Harrison Sts., 33-4437. Advice Bureau for young people and parents with personality problems. etc.

## SERVICES FOR UNMARRIED MOTHERS/ DIENSTE VIR ONGETROUDE MOEDERS

**ARMESORGRAAD VAN DIE WITWATERSRAND VAN DIE NEDERDUITSE GEREFORMEERDE KERK, W.O. 519,** De Kortestraat 117, Braamfontein, Posbus 7854, 44-3757:

**UITKOMSTEHUIS, St. Amantstr. 242,** Malvern. 25-4413. Tehuis vir 18 ongetroude moeders.

**CATHOLIC WOMEN'S LEAGUE ADOPTION SOCIETY** — See Adoption Agencies.

**COTLANDS BABIES SANCTUARY, 134** Stanton St., Turffontein, 32-1025. (See Children's Homes.)

**PRINCESS ALICE ADOPTION HOME, Kerr Muir House, Westcliff,** Phone 41-1645. Run under auspices

of Child Welfare Society (W.O. 192) Phone 22-0951. For European babies awaiting adoption and for unmarried European expectant mothers. (See also Services for Children and Family Welfare Services — Child Welfare Society.)

PRINCESS ALICE AANNE-MINGSTEHUIS, „Kerr Muir House“, Westcliff. Telefoon 41-1645. Word bestuur onder die beskerming van die Kindersorgvereniging. (W.O. 192) Tel.

22-0951. Vir Blanke babas wat in aan-neming geplaas moet word en onge-troude Blanke verwagterende moeders. (Sien ook Maatskaplike Dienste vir Kinders en Gesinsorgdienste — Kin-dersorgvereniging.)

SALVATION ARMY, 131 Com-missioner St., P.O. Box 1018. Jhb. 22-4914:

INGLENOOK, 22 Sharp St., Belle-vue East, 43-4503. Accommodation for 16 unmarried mothers.

## CHILDREN'S HOMES/KINDERHUISE

ABRAHAM KRIEL KINDER-HUIS, Du Toitstraat, Posbus 66, Langlaagte. 35-1139. 340 Verwaar-loosde, behoeftige, wees- en half-weeskinders.

APOSTOLIC FAITH MISSION CHILDREN'S HOMES, W.O. 2454. Private Bag, Lyndhurst, 40-7051. Pro-vides for 200 orphans & children in need of care.

APOSTOLIESE GELOOF SEN-DING KINDERHUISE, W.O. 2454, Privaatsak Lyndhurst, 40-7051. Ver-sorg 200 weeskinders en sorgbehoe-wende kinders.

ARCADIA SOUTH AFRICAN YOUNG JEWISH ORPHANAGE, 22. Oxford Road, Parktown, 41-1711. Office: 401/404, Fanora House, Cr. Rissik & Kerk Sts., P.O. Box 7486, 835-4664/5. Provides a home & higher education for orphans and destitute children (average of 83 children). Contributes towards the financial sup-port of destitute children in their own homes.

CHILD WELFARE SOCIETY, W.O. 192. Phone 22-0951, conducts

the following: Grantley, 26 Grant Avenue, Victoria — babies to age of 2 years; Hoernle Cottage, 60 Dorothy Road, Norwood — Girls 6-12 years; Howard Pim House, Haven Road, Greenside — boys 6-12 years; Nora-dene, 68 Dorothy Road, Norwood — both sexes 2-5 years; Orlando Home, Orlando — both sexes, Non-Euro-pean, birth to 14 years; Princess Alice Adoption Home (see Adoption Ser-vices). (See also Services for Children and Family Welfare Services — Child Welfare Society.)

COTLANDS BABIES SANCTUARY, 134 Stanton St., Turffon-tein, 32-1025. Office: P.O. Box 1773, 22-1545. Cares for infants from birth to two years where parents or guar-dians are unable to look after them. Also cares for young unmarried mothers prior to birth of child.

EPWORTH CHILDREN'S HOMES, Office: Methodist Central Hall, 66 Kruis St., 22-0910. For children or-phaned or in need of care irrespective of creed or nationality. Girls' Home: 73 Pandora Rd., Malvern, 25-1225

---

*This page was sponsored by*

**MOBIL OIL SOUTHERN AFRICA (PTY.) LTD.**

---

(24 girls) also at Benoni; Boys' Homes: 89 Vlok St., Pretoria, 2-0856; Family Group Homes: 146, de Villiers St., Kenilworth, 32-1949 (16 boys and girls), also at Germiston.

**GUILD COTTAGE**, Guild Road, Sans Souci, 31-1630. Run by Guild of Loyal Women, W.O. 448, P.O. Box 703, for 35 children in need of care and from broken homes. Boys from 3-10 and girls from 3-18.

**JOHANNESBURG CHILDREN'S HOME (UNDENOMINATIONAL)** W.O. 2468, 46 Observatory Ave., Observatory, 43-3441. Provides care and protection for 130 neglected and underprivileged children. Girls up to 18 years and boys up to 10 years. 43-2508 (matron).

**KINDER SORGVERENIGING**, W.O. 192. Telefoon 22-0951, beheer die volgende: Grantley, Grantlaan 26, Victoria — babas, beide geslagte, tot 2 jaar oud; „Hoernle Cottage”, Dorothyweg 60, Norwood — dogters, 6-12 jaar; „Howard Pim House”, Havenweg, Greenside — seuns 6-12 jaar; Noradene, Dorothyweg 68, Norwood — beide geslagte 2-5 jaar; „Orlando Home”, Orlando — beide geslagte, Nie-blank, geboorte tot 14 jaar; Princess Alice Aannemingstehuis (Sien Aannemingsdienste). (Sien ook Maatskaplike Dienste vir Kinders en Gesinsorgdienste Kindersorgvereniging.)

**MARY IMMACULATE CHILDREN'S CENTRE**, 44 Pretoria Road, P.O. Box 44, Lyndhurst, 40-2558. Provides care, accommodation and a Christian upbringing for up to 60 children of both sexes and all denominations under the age of 6 years. Mostly boarders but some day children.

**MARIA KLOPPERS KINDERHAWE**, de la Reystraat 26, Observa-

tory, Jhb., 43-1633. Behoeftige en verwaarloosde suigeling van geboorte — 3 jaar (60 kinders).

**NAZARETH HOUSE**, W.O. 1790, 1 Webb St., Yeoville, 43-2021. Run by Poor Sisters of Nazareth for 120 children, foundlings, abandoned and orphaned, and those who are deformed or suffer from incurable diseases.

**PRESIDENT KRUGER TEHUIS (PRESIDENT KRUGER CHILDREN'S HOME & ORPHANAGE)**, W.O. 138, East St., Linmeyer, Office: 24 Langermann Drive, Kensington, P.O. Box 12 Kengray, 25-3085. For 90 orphans and children in need of care.

**ST. GEORGE'S HOME FOR BOYS**, W.O. 1937, Healy Rd., Malvern East, P.O. Box 4, Cleveland, 25-1813. Office: 146 Annan House, 86 Commissioner St., 33-4647. Caters for 162 boys from 9-18 mainly from broken homes.

**St. JOSEPH'S HOME FOR COLOURED CHILDREN**, Good St., Sophiatown, P.O. Box 2598, 27-3901. Cares for orphaned & committed Coloured children.

**ST. JOSEPH'S TRAINING SCHOOL**, 277, Louis Botha Ave., P.O. Box 8, Orange Grove, 45-1817. Rehabilitates & re-educates problem teenage girls; rehabilitates and trains unwed mothers; rehabilitates & trains Coloured teenage girls; does preservation work for young Coloured girls.

**ST. MARY'S ORPHANAGE**, W.O. 2455, Zinnia St., Rosettenville, 26-4146. Office: Consolidated Gold Fields Bldg., 75 Fox St., 835-7179. Run by Church of England Sisters of Charity for 108 children, girls from the ages of 2-18, boys from 2-9, mainly from broken homes. Runs nursery school for the younger children.

**SALVATION ARMY CHILDREN'S HOMES:** (Salvation Army — See Family Welfare Services.)

“**FIRLANDS**” **BOYS' HOME**, 4th Ave., Linden, 46-9212. Accommodation for 123 European boys.

“**STRATHYRE**” **GIRLS' HOME**, 27 Beelaerts St., Troyeville, 24-2774. Accommodation for 66 European girls.

“**BETHANY**” **NON-EUROPEAN GIRLS' HOME**, P.O. Box 31, Phiri-ma, Iketlo 22. Accommodation for 95 needy and delinquent African girls.

“**MOFOLO**” **YOUTH CENTRE**, Dube, Tvl. Phone: Orlando 157. Ac-

commodation for 84 African young men.

**SONS OF ENGLAND CHILDREN'S HOME**, 10 Hood Ave., Rosebank, 42-1216. Secretary's Phone No. 43-3192. Run by Sons of England Society for 24 children, girls from 5 to school leaving, boys from 5-12. Mainly for neglected children and children from broken homes.

**S.A.R. CHILDREN'S HOME**, New Canada. Office: 308 Africa House, 60 Rissik St., Run for 46 boys of deceased fathers, ages 14-18½. Other homes at Bloemfontein, Pietermaritzburg & Uitenhage.

## **ADOPTION AGENCIES/ AANNEMINGSORGANISASIES**

**ARMESORGRAAD VAN DIE WITWATERSRAND VAN DIE N.G. KERK**, De Kortestraat 117, Braamfontein, Posbus 7854, 44-3757. — Sien Gesinsorgdienste.

**CATHOLIC WOMEN'S LEAGUE ADOPTION SOCIETY**, W.O. 157. Sec. 101 Shawley Lodge, Ley Road, Victory Park, 46-5708. Places children of all races, especially babies, in adoption. Cares for unmarried mothers. Cares for Bantu babies until adopted. (See also Family Welfare Services & Services for unmarried mothers.)

**COTLANDS BABIES SANCTUARY**, 134 Stanton St., Turffontein, 32-1025, Office: P.O. Box 1773, 22-1545. Places babies in adoption. (See also Children's Homes & Services for unmarried mothers.)

**PRINCESS ALICE ADOPTION HOME**, Kerr Muir House, Westcliff, Phone 41-1645. Run under auspices

of Child Welfare Society (W.O. 192), Phone 22-0951. For European babies awaiting adoption and for unmarried European expectant mothers. (See also Services for Children and Family Welfare Services & Services for unmarried mothers — Child Welfare Society.)

**PRINCESS ALICE AANNEMINGSTEHUIS**, „Kerr Muir House”, Westcliff, Tel. 41-1645. Word bestuur onder die beskerming van die Kindersorgvereniging, (W.O. 192) Telefoon 22-0951. Vir blanke babas wat in aanneming geplaas moet word en ongetroude blanke verwagende moeders. (Sien ook Maatskaplike Dienste vir kinders en Gesinsorgdienste — Kindersorgvereniging.)

**S.A. VROUEFEDERASIE**, Streek **RAND SENTRAAL**. — Sien Gesinsorgdienste.

---

*This page was sponsored by*

**JOHANNESBURG BUILDING SOCIETY**

---

## HOMES, SCHOOLS & SERVICES FOR HANDICAPPED CHILDREN/TEHUISE, SKOLE EN DIENSTE VIR GESTREMDE KINDERS

ASSOCIATION FOR THE AID OF SCHOOLS FOR CHILDREN IN NEED OF SPECIAL CARE. W.O. 1794. P.O. Box 186. Saxonwold. 4-2141. Cares for handicapped and retarded children. Subsidises CRESSET HOUSE.

CRESSET HOUSE, P.O. Box 74, Halfway House, 823-5713. School for mentally handicapped children from the ages of 6-13, subsidised by the Association for the Aid of Schools for Children in Need of Special Care.

CRIPPLES' CARE ASSOCIATION OF THE TVL. W.O. 226. P.O. Box 566. 41-1494. Maintains Hope Training Home. (See also Services for the Handicapped.)

FOREST TOWN SCHOOL FOR CEREBRAL PALSIED CHILDREN, W.O. 982. Rannoch Rd., Forest Town, 41-0131. School, treatment centre & diagnostic clinic.

HAMLET, THE. 27 Ridge Rd., Cr. York Rd., Parktown. Undenominational Day School for over 100 mentally handicapped children and young adults with I.Q.'s of under 50, of ages ranging from 3 to over 20 years. Maintained by the Society for the Welfare of Backward & Retarded Persons. W.O. 1935, 68 Shakespeare House, Commissioner St., P.O. Box 1746. 835-3038.

HOPE CONVALESCENT HOME, Pallinghurst Rd., Westcliff, 41-2144. Home for physically handicapped children. Orthopaedic boys from the ages of 2-10, and orthopaedic girls from the ages of 2-12. Medical cases, boys from 2-12, and girls from 2-14.

HOPE HOMES GOVERNMENT SCHOOL, Pallinghurst Rd., Westcliff, 41-1210 (School), 41-1390 (Principal). All pupils are physically handicapped.

Majority are patients at the Hope Convalescent Home or the Hope Training Home, but some come daily, mostly in the buses of Uncle Ted's Fund. Classes from Grade 1 — Standard 10.

HOPE TRAINING HOME, Pallinghurst Rd., Westcliff, 41-1494. Maintained by the Cripples' Care Association of the Tvl. for physically handicapped children and young persons from the ages of 10-18.

MARGARET BALLINGER HOME, Princess Halt, P.O. Box 233, Roodepoort, 763-1690. Takes recent convalescent surgical, medical & after-care orthopaedic non-European cases regularly from the main hospitals, the Reef and other sources. Can accommodate 70 children, infants from 3-12 months (mainly suffering from malnutrition) and other children from 6-14 years. Children receive schooling and exercises.

RALPH HAHN HOSTEL, 8 St. Patricks Ave., Parktown, 44-2748. Run by the Society for the Welfare of the Jewish Deaf for Jewish deaf children throughout South Africa. Accommodates not only deaf children but also physically handicapped, spastic and partially mentally handicapped children. (14 children at present.)

ST. VINCENT SCHOOL FOR THE DEAF, W.O. 35, 158 Oxford Rd., Melrose, 42-1654. Provides general educational & vocational training for 218 children from the age of 3 upwards of both sexes.

SAN MICHELE, W.O. 533, 47 Hughes Settlement, Elandsfontein, District Boksburg, 52-1269. Office: 901/2 Provident Assurance House, 31 Simmonds St., 33-8852. Undenomi-



national Home for 160 mentally handicapped children of both sexes.

**SAN SALVADOR.** Melville Rd., Hyde Park, Jhb. Home for 41 mentally handicapped people from the age of 4 upwards, run by the Dominican Sisters.

**SELWYN SEGAL HOSTEL.** 71 Pandora Rd., 25-8501. Hostel for 36 handicapped of both sexes (majority mentally handicapped) run by the Society for the Jewish Handicapped. Shortly to be replaced by cottages at George Ave., Sandringham. The complex will consist of 8 units each having 16 persons in a family group, and will include a training centre able to cope with 200 persons per day. Included in the Occupational centre will be a physiotherapy and speech training centre.

**SOCIETY FOR THE JEWISH HANDICAPPED.** W.O. 198, P.O. Box 9764, Jhb. See Selwyn Segal Hostel.

**SOCIETY FOR THE WELFARE OF THE JEWISH DEAF,** W.O. 679, P.O. Box 7200 --- See Ralph Hahn Hostel.

**UNCLE TED'S FUND FOR HAN-DICAPPED CHILDREN.** W.O. 1718, 42/3/4 New Kempsey Bldgs., Cr. Fox & Joubert Sts., P.O. Box 10843, 33-3798, 33-3588. Provides transport for handicapped children to and from special schools and classes.

**UNITED CEREBRAL PALSY ASSOCIATION OF SOUTH AFRI-CA.** W.O. 1400, Firgrove, Cr. Main & North Sts., Townsview. P.O. Box 10398, Jhb., 26-6331/2. Runs hostel for 20 cerebral palsied children, to be replaced with 100 bed hostel now in building; clinic which is an out-patient department of South Rand Hospital, for 50 children daily; clinic for 50 Bantu children at Baragwanath which operates as outpatient department of Baragwanath Hospital, with hostel in building for 50 Bantu children.

**WOODSIDE SANCTUARY,** W.O. 1982, Cr. Dorbie & Canary Sts., Cottesloe, 31-4371. Correspondence to P.O. Box 351, 835-3689. Home for 30 children who are both physically and mentally handicapped.

## **SERVICES FOR THE HANDICAPPED/DIENSTE VIR GESTREMDES**

**AVALON,** W.O. 840, "Tussenkop-pies" Farm, Rietvlei 17, Dist. Jhb., P.O. Box 178, Booyens, 32-4601. Caters for the rehabilitation of all types of physically handicapped. Patients are accommodated and receive daily physio and occupational therapy.

**CIVILIAN BLIND SOCIETY** — See Society to Help Civilian Blind.

**CLUNY FARM CENTRE TRUST,** W.O. 2496, P.O. Bryanston, 823-2440.

Office: 215 Harmain House, Harrison St., P.O. Box 3189, Jhb., 33-6794. Sheltered employment community for adult spastics run on Rudolf Steiner lines. Undenominational, and persons from anywhere in the Republic and Rhodesia admitted.

**COLOURED & INDIAN BLIND WELFARE ASSOCIATION,** W.O. 637, 42A, Mint Rd., Fordsburg, P.O. Box 181, Fordsburg, 33-8497. Con-

---

*This page was sponsored by*

**GENERAL MINING AND FINANCE CORPORATION LTD.**

---

ducts sheltered workshop for Coloured and Indian blind people. Provides help for similar blind not in workshop.

**CRIPPLES' CARE ASSOCIATION OF THE TVL.**, W.O. 226, P.O. Box 566, 41-1494. Discovery, treatment & rehabilitation of disabled persons of all races by means of clinical facilities, treatment in Institutions, placement in employment in either Sheltered Employment or the open labour market, and after care treatment by nurses, social workers and physiotherapists. (See also Homes & Schools for Handicapped Children.)

**DEAF AND DUMB ASSOCIATION**, W.O. 12, Rooms 308-9, 119 De Korte St., Braamfontein, P.O. Box 3343, 44-7487. Provides the welfare needs of totally deaf and hard of hearing of all races, particularly placing in suitable employment. Provides institutional care for elderly deaf-mutes and deaf-blind in the Colonel Rowland Homes. (See Old People's Homes & Services.)

**DISABLED EX-SERVICEMEN'S WELFARE FUND**, W.O. 676, Springfield, Jhb., P.O. Box 100, Springfield, 835-3381. Helps over 300 European and 100 Non-European disabled, including provision of meals, dry canteens, loans or grants, free food parcels, etc. Coloured Service Products at Crown Mines.

**EASTER STAMP FUND FOR CRIPPLES**, Southern Tvl. Region, W.O. 706, 411 Gilhove Chambers, 57 De Villiers St., P.O. Box 7967, 23-8247. Fund Raising body of the National Council for the Care of Cripples in South Africa.

**EZENZELENI** — See Transvaal Society for the Care of Non-European Blind.

**FRIDA SICHEL OCCUPATIONAL CENTRE**, (OF THE JEWISH WOMEN'S BENEVOLENT & WELFARE SOCIETY), 136 Sivewright

Avenue, Doornfontein. 24-9245. Occupational Centre for mentally and physically handicapped Jewish women. Crafts are taught, but the emphasis is on social rehabilitation. The Centre is open on Tuesday, Wednesday and Thursday mornings from 9.30 a.m. — 12.30 p.m.

**HAPPINESS FOR THE HANDICAPPED ORGANISATION**, W.O. 2068, City Hall, Market St., P.O. Box 1049, 835-6477. Co-operates with and assists other organisations caring for the handicapped. A social and recreational centre will be built in Hedley Chilvers Square during 1964, for the physically, mentally and socially handicapped.

**JOINT FUND FOR THE BLIND**, Behrmann House, 38-40 Anderson St., P.O. Box 2725, Jhb. Fund raising body for all blind in the Witwatersrand, the member organisations being: Coloured & Indian Blind Welfare Association, Society to Help Civilian Blind, S.A. National Council for the Blind, S.A. Blind Workers Organisation, and the Transvaal Society for the care of Non-European Blind.

**RAND EPILEPTIC EMPLOYMENT ASSOCIATION**, W.O. 139, 56 Hamilton Ave., Craighall Park. Private Bag 2, Craighall, 42-1223. Runs sheltered employment project in Craighall Park, only organisation throughout Southern Africa which takes care of adult epileptics. Employs the male patients at its nursery and poultry farm, provides housing and general welfare for the single men in a hostel, and for the married men with wives and children in cottage settlement. Looks after female patients in separate centre.

**RED CROSS TIME CLUB**, Red Cross House, 77 De Villiers St., 22-8251, Transport, visiting, club work, for all sections of handicapped people, both children and adults. (See

Recreational Facilities, & Hospital Visiting Services.)

**ST. GILES ASSOCIATION (TVL.)** W.O. 1936, 134-135 Shakespeare House, Commissioner St., P.O. Box 3452, 43-2224. Helps, guides and assists in the rehabilitation of disabled and physically handicapped persons. Provides social amenities, training, occupation, sporting and other facilities to ensure that all disabled and handicapped persons shall be granted every possible assistance.

**ST. CHRISTOPHER'S HOSTEL FOR WOMEN**, W.O. 165, Witkoppen, P.O. Box 3486, 706-2647. Hostel for 16 handicapped women who are not bedridden.

**SELWYN SEGAL HOSTEL (SOCIETY FOR THE JEWISH HANDICAPPED)** — see Homes, Schools & Services for Handicapped Children.

**SOCIETY TO HELP CIVILIAN BLIND (CIVILIAN BLIND SOCIETY)**, W.O. 32, 38-40 Anderson St., P.O. Box 2725, 33-4525. Provides social welfare services for blind

people. Makers of cane furniture, basket ware, tennis nets, woven goods.

**S.A. BLIND WORKERS ORGANISATION**, W.O. 331, 216-218 Grand National Bldg., Cr. Rissik & Pritchard Sts., P.O. Box 2360, Jhb., 23-4614. Trains & places blind in open labour market. Production of braille for the blind through Braille Services.

**S.A. GUIDEDOGS ASSOCIATION FOR THE BLIND**, W.O. 1751, 105 S.A.C.T.A. House, 277 Bree St., P.O. Box 10896, Jhb., 22-3467. Provides Guidedogs for blind people from all over the Republic who are trained at the Sandown Training Centre. Training of the blind people takes four weeks. Only such service on the continent of Africa.

**TRANSVAAL SOCIETY FOR THE CARE OF NON-EUROPEAN BLIND**, W.O. 283, Ezenzeleni, P.O. Box 42, Roodeport, 763-3451. Hon. Sec.: 22-5765. Cares for African blind, workshops & hostels at Ezenzeleni & Hammanskraal. Palmer Eye Hospital, telephony training unit, welfare services. Manufactures basketry, brushes & brooms & mattresses in workshops for sale to public.

## **SERVICES FOR EX-SERVICEMEN & WOMEN/ DIENSTE VIR OUDSTRYDERS**

**GUNNERS' ASSOCIATION**, W.O. 1138, P.O. Box 2834, Jhb. Helps serving Gunners and ex-service Gunners in indigent circumstances, gives educational grants for the dependants of deceased gunners.

**NAVAL OFFICERS' ASSOCIATION OF SOUTHERN AFRICA CHARITABLE FUND**, W.O. 1864, P.O. Box 179, Jhb., 835-6446. Assists own members and their dependants, thereafter former serving officers or their dependants of the Commonwealth & Allied Navies and thereafter any former members of the Commonwealth & Allied Navies or Merchant

Navy. Such assistance would be offered in the way of a grant of a loan.

**NAVY WELFARE FUND**, W.O. 232, 28 Bon Accord House, Harrison St., P.O. Box 6335, 33-5174. Welfare of ex-naval men and women.

**ROYAL AIR FORCE ASSOCIATION**, W.O. 239, P.O. Box 3476. Advice & employment, and benevolent fund.

**ST. DUNSTAN'S**, W.O. 447. Hon. Welfare Officer for the Tvl.: 17 Park Lanc Mansions, 44-3903. Assists 20 blinded ex-Servicemen and their families.

**SAPPERS ASSOCIATION, W.O.** 314, P.O. Box 2283. Finds work for genuine cases of Sappers in need. Assists in cases of extreme illness & visits the sick.

**S.A. AIR FORCE ASSOCIATION, W.O.** 1440, 407 Winchester House, Loveday St., P.O. Box 2312, 33-3935. Provides bursaries for children of Air Force personnel who were killed in action or who have died since the war.

**S.A. COLOURED EX-SERVICEMEN'S LEGION, W.O.** 983, 406 Lencic House, 1 Kerk St., 835-2950. Assists Coloured ex-Servicemen finan-

cially. Helps the Coloured community but not financially.

**S.A. JEWISH EX-SERVICEMEN'S LEAGUE, JHB. BRANCH, W.O.** 1020, 518 Zionist Centre, 84 De Villiers St., P.O. Box 5254, 22-0855, mornings only. Promotes welfare and interest of Jewish soldiers and ex-soldiers.

**S.A. LEGION OF THE B.C.E.S.L., W.O.** 233, 28 Bon Accord House, Harrison St., P.O. Box 6335, 33-5174. Promotes welfare and interest of ex-Servicemen and women.

## SERVICES FOR ALCOHOLICS/DIENSTE VIR ALKOHOLISTE

**ALCOHOLICS ANONYMOUS, W.O.** 1582, 5th Floor, Tartan House, 40 Plein St., 22-1657. Fellowship of people who share their own and others' problems of alcoholism.

**MATIGHEIDSBOND (S.A.S.) W.O.** 1893, Kamer 810, Saambougebou, h/v Rissik- en Pleinstraat. Posbus 9788, 22-1857. Op christelik wetenskaplike grondslag beywer die Bond hom ter voorkoming van drankmisbruik en rehabilitering van alkoholiste by Elimklinik, Posbus 88, Kempton Park. Die Bond werk hoofsaaklik onder spoorwegamptenare, maar stel ook fasiliteite.

**RAND AID ASSOCIATION, W.O.** 52, 42 Annet Rd., Private Bag No. 3, Cottesloe, 31-1125/6, 31-1259. Care & treatment of the Alcoholic at: Cottesloe Hostel, 31-1126, Ext. 7, 40 men; Mount Collins, P.O. Box 20, Bergvlei, 55 women, 40-2211, 40-3433; Northlea, P.O. Box 20, Bergvlei, 100 men, 40-2211; The Annexe, P.O. Box 20, Bergvlei, 150 men, 40-7400; William Mitchell House, Cottesloe, 31-2172, 22 women.

**RANDSE HULPVERENIGING, W.O.** 52, Annetweg 42, Privaatsak

No. 3, Cottesloe, 31-1125/6, 31-1259. Versorging en behandeling van alkoholiste by: Cottesloe Hostel, 31-1126, Uitbr. 7, 40 mans; Mount Collins, Posbus 20, Bergvlei, 55 vrouens, 40-3433, 40-2211; Northlea, Posbus 20, Bergvlei, 40-2211, 100 mans; The Annexe, Posbus 20, Bergvlei, 40-2211, 40-7400, 150 mans; William Mitchell House, Cottesloe, 31-2172, 22 vroue.

**S.A. NATIONAL COUNCIL ON ALCOHOLISM, 319 Charter House, 13 Rissik St., 33-2748.** Information & referral of alcoholics for treatment.

**S.A. TEMPERANCE ALLIANCE, 61-62 Moseley Bldgs., 93 President St., P.O. Box 5725, 22-7780.** Rehabilitation of alcoholics. Rest room on premises open from 9 a.m. — 5 p.m. from Monday — Friday, and for fellowship on Tuesday & Saturday evenings.

**WOMEN'S CHRISTIAN TEMPERANCE UNION OF THE TVL., W.O.** 1083, 62 Moseley Bldgs., 91 President St., 22-7780. Supports Eureka League of the S.A. Temperance Alliance. Provides scholarships for the prevention of alcoholism.

## SERVICES FOR ANIMAL WELFARE/DIENSTE VIR DIEREBESKERMING

**ANTI-CRUELTY LEAGUE (INCORPORATING HORSE PROTECTION SOCIETY)**, W.O. 2094, 66, Marjorie St., Regents Park Extn., 26-3988. Concerned with every aspect of animal welfare, treating the sick and injured, destroying those that are beyond repair. Rescuing strays and finding them suitable homes. Clinic, and housing, for dogs, cats, etc. Works in Non-European locations and runs mobile clinic. Makes representations to official bodies with a view to bringing about reforms.

**BANTU ANIMAL WELFARE SOCIETY**, W.O. 26, P.O. Box 2421. Fod, medicines, surgical treatment & clinical care administered by mobile clinics in daily visits to non-European townships. Education in care of animals given to Bantu animal owners. Destructions carried out where neces-

sary. Cases of cruelty investigated & prosecuted where necessary. These operations carried out by inspecting staff and honorary field workers.

**PEOPLE'S DISPENSARY FOR SICK ANIMALS**, W.O. 1337, 39 Twickenham Ave., Auckland Park, 31-2975. Provides free treatment of sick animals for people who cannot afford veterinary surgeons' fees, especially in African locations.

**SOCIETY FOR THE PREVENTION OF CRUELTY TO ANIMALS**, W.O. 204, Ophir Rd., Booysens, P.O. Box 2960, 33-9727. Free veterinary treatment & hospitalisation for animals belonging to people unable to afford normal fees. Collection of stray and unwanted animals. Enforcement of the Animals Protection Act of 1962.

## RECREATIONAL FACILITIES & HOSTELS/ ONTSPANNINGSFASILITEITE EN TEHUISE

**ALAN ISAACS CAMP OF THE UNITED PROGRESSIVE JEWISH CONGREGATION OF JHB.**, W.O. 1703, Temple Israel, Paul Nel & Claim Sts., Hillbrow, 44-1453. Runs a camp at Margate for children and young people which is used by various organisations during the year.

**BANTU MEN'S SOCIAL CENTRE**, 223, Eloff St. Extn., 835-7197. Boxing, weightlifting, games, songs, debates, etc.

**BANTU SPORTS CLUBS TRUST**, c/o Mr. L. G. Butt, Howard Pim &

Hardy, P.O. Box 1331, Jhb. Provides & assists the creation of recreational facilities by means of grants towards the capital cost of such projects.

**BOY SCOUTS ASSOCIATION**, 601, Montrose House, 36, Pritchard St., P.O. Box 1233, Jhb., 835-7203. The Boy Scouts of South Africa, comprised of four Associations which serve all races, is a part of the world wide youth movement. Its aims are to develop good citizenship amongst boys by promoting their spiritual, mental and physical development

---

*This page was sponsored by*

**RAND MINES LIMITED**

---

through self discipline and training in services useful to the public and handicrafts useful to themselves, and by encouraging them to serve without considering reward.

**BOYS' BRIGADE**, 606, Barclay's Bank Bldg., 42, Kruijs St., P.O. Box 7881, Jhb., 23-9347. Development of Christian character through a programme of weekly meetings including physical training, and Sunday Bible classes.

**ENTOKOZWENI** — see Family Welfare Services.

**GIRL GUIDES ASSOCIATION OF SOUTH AFRICA**, Tvl. Province, 512 Leisk House, Cr. Bree & Rissik Sts., 23-1433. World wide voluntary organisation for girls of all races from 7—21 years giving opportunities for self training through developing an interest in camping & outdoor activities, community service, home-craft, health, cultural interests and international friendship.

**GIRLS' LIFE BRIGADE**, 81 Putney Rd., Brixton, 35-4926. Christian Youth Organisation, interdenominational and international, stands for total abstinence. By its spiritual, physical, educational and social programme, it seeks to co-operate with the Church in training girls to be true Christian women.

**HARMONIE**, Saratogalaan 11, Doornfontein, 44-2513. Meisies-koshuis, waar meisies met goeie betrekings loseer, beheer deur die S.A. Vrouefederasie.

**IKWEZI BOYS' AND GIRLS' YOUTH CLUBS**, 8709 & 8711, Orlando West. Under the auspices of the African Self Help Association, 212 Transvalia Buildings, 21 Stiemens St., Braamfontein, 44-9690.

**JOHANNESBURG YOUTH COUNCIL, JOHANNESBURGSE JEUGDIENSRAAD**. — See Coordinating Bodies, Ko-ordinerende Liggame.

**MALVERN & BELGRAVIA BOYS' & GIRLS' CLUB**, W.O. 64, 476 Jules St., Malvern, 25-3590. Boys' and girls' club for gym., etc. Runs soup kitchen in winter. Maintains holiday rest camp at St. Therese's by the Sea, Scottburgh, for children. Summer camps held on own camping premises at Henley-on-Klip during summer holidays each year. (See also Old People's Homes and Services.)

**MAYFAIR YOUNG MEN'S CHRISTIAN ASSOCIATION**, 177, 9th Avenue, Mayfair, 35-7510. Club facilities for boys and girls and young people. boxing, badminton, Sea Scouts, etc.

**ORLANDO YOUNG MEN'S CHRISTIAN ASSOCIATION**, W.O. 2403, P.O. Box 5, Orlando, Jhb. Tel. 981, Ext. 37. Two centres: Donaldson Centre, Rathebe St., Orlando East (Headquarters), and a smaller recreational and social centre in Hermanus St., Orlando East, Orlando 133. Facilities include judo, boxing, body-building, tennis, ballroom dancing & Billiards, as well as classes in typing, shorthand, carpentry and radio repairs, and a variety of musical activities.

**DIE RANDSE JEUGTEHUIS**, Bereaweg 42, Bertrams, 24-7994, 24-5931. Tehuis vir 128 werkende seuns, beheer deur die Armesorg-raad van die N.G. Kerk.

**RED CROSS TIME CLUB**, W.O. 414, 77 de Villiers St., 22-8251, Ext. 33. Alleviates loneliness for people of all ages through visits and friendship, and provides opportunities for them to serve the community. Runs seven clubs for the ages.

**SALVATION ARMY HOSTELS** (Salvation Army — see Family Welfare Services).

"Booth Memorial" Young Women's Hostel, 80 Kerk St., 22-2403. Accommodation for 40 residents.

"Park House" Young Men's Hostel, 114 de Korte St., 835-7797. Accommodation for 46 residents.

S.A. ASSOCIATION OF YOUTH CLUBS, W.O. 141, 217 Cullinan Bldgs., Cr. Simmonds & Main Sts., 33-9646. Organises and runs clubs for young people between the ages of 10 and 25, European, Coloured and African, aiming at the spiritual, mental and physical well-being of young people.

SONSKYN, Saratogalaan 15, Doornfontein, 44-1575. Meisies-koshuis waar meesal diegene bly wat by Beskutte Arbeid werk, beheer deur die S.A. Vrouefederasie (Sien Gesinsorgdienste.)

TRANSVAAL ASSOCIATION OF BOYS' CLUBS, W.O. 748, 1, General Mining Bldg., 6 Hollard St., 34-4101, 46-1544. Runs 7 clubs for children from the age of 7 — school leaving. Activities include boxing, judo, gymnastics, soccer, badminton, cricket, softball, etc.

STUDENTS' CHRISTIAN ASSOCIATION PLAY CENTRE, W.O. 1619, c/o. S.R.C. Office, Witwatersrand University, Milner Park. Students run play centre on Saturday afternoons at the Jan Hofmeyer Hall for 120 children from the ages of 2-15 from Vrededorp & Jan Hofmeyer.

TRANSVAAL ASSOCIATION OF NON-EUROPEAN BOYS' CLUBS, W.O. 633, 3a, Eloff St., P.O. Box 8505, 34-2682. Runs 118 clubs in the Transvaal. 71 of which are in the Johannesburg area. Activities include boxing, weight lifting and body building, football, ballroom dancing, dra-

ma, arts and crafts, netball, hockey, etc. Runs Youth Centre in Dube.

TRANSVAAL GIRL WAYFARERS ASSOCIATION, 134 Loveday St., Wanderers View, 44-6204. Gives Christian teaching to African women and girls, to help train them in habits of truthfulness, helpfulness, industry and courtesy, to teach them handicrafts useful to others as well as themselves, and to assist them to become good home-makers.

YOUNG MEN'S CHRISTIAN ASSOCIATION, JHB. BRANCH, W.O. 680, Cr. Rissik and Smit Sts., P.O. Box 1001, 44-1561, 44-1613. Has residential accommodation for 180. Facilities for badminton, snooker, judo, body building, fencing, etc. Halls & rooms for letting. A 22 acre sportsground in Bradford Rd., Bedfordview, with facilities for tennis, cricket, soccer, hockey & swimming.

YOUNG WOMEN'S CHRISTIAN ASSOCIATION, Jhb. Local Association, W.O. 182, 315 York House, Rissik St. (between Pritchard & Kerk Sts.), P.O. Box 5436, Jhb., 835-4010. Mondays to Fridays, 9 a.m. — 4.30 p.m. Club membership of approx. 550. Residential club in building, cr. Rissik & de Korte Sts.

Y.W.C.A. Hostel, 24, Wellington Rd., Parktown, 44-6334, 44-2521. Accommodation for 48 young women.

YOUTH HOSTELS ASSOCIATION, 80, Loveday St., P.O. Box 2085, Jhb., 33-7191, 835-1986. Aims to help all, but especially young people of limited means, to a better understanding of one another, and to a greater knowledge, love and care of their country, particularly by providing hostels or other simple ac-

---

*This page was sponsored by*

**RECKITT & COLMAN (AFRICA) LTD.**

---

commodation for them in their travels.

Johannesburg Hostel: 158 End St., Doornfontein, 44-1579.

**ZENZELE YOUNG WOMEN'S CHRISTIAN ASSOCIATION OF THE TVL.**, W.O. 1569, Congregation-

al Centre, 75 de Korte St., Braamfontein, 835-3629. Runs community centre at Dube with full-time Social Worker. Leadership training, Bible studies, cookery, etc. Arranges picnics for indigent children and indoor and outdoor games for teenagers.

## MISCELLANEOUS/ALLERLEI

**MISSIONS TO SEAMEN, TVL BRANCH**, W.O. 2214, P.O. Box 1131. Supplies the Missions to Seamen Club in Walvis Bay with money for the needs of seamen visiting there.

**SOCIAL WORKERS' ASSOCIATION OF SOUTH AFRICA**, Sthn. Tvl. Branch. Hon. Sec.: P.O. Box 6551, Jhb. Professional organisation for qualified social workers in its area. Main functions are to look after interests of its members and to work towards higher professional

standards by organising study courses, lectures, discussions, etc.

**S.A. INSTITUTE OF RACE RELATIONS**, Auden House. 68 de Korte St., Braamfontein. P.O. Box 97, Jhb., 835-1781 (Head Office). In promoting inter racial contact in all spheres, the institute has, inter alia, initiated many social welfare organisations, now independent, has a steady flow of case work on influx control, etc., and carries out projects such as supplying African schools with libraries.

## NURSERY SCHOOLS FOR EUROPEAN CHILDREN / BEWAARSKOLE VIR BLANKE KINDERS

(Committee conducted, registered & subsidised by the Transvaal Education Department./Beheer deur komitee, geregistreer by en gesubsidieer deur Transvaal Onderwysdepartement.)

**CHILD WELFARE SOCIETY**, W.O. 192, Phone 22-0951, conducts the following:

Baumann Creche, Welfare House, 168 Fox St. (all day);

Cicely Creche, corner Lilian and Fountain Roads, Fordsburg (all day);

(Child Welfare Society, see Family Welfare Services. Services for Children, etc.)

**KINDER SORGVVERENIGING**, W.O. 192, Telefoon 22-0951, beheer die volgende:

Baumann Creche, Welsynshuis,

Foxstraat 168 (heel dag);

Cecily Creche, h/v Lilian- en Fountainweg, Fordsburg (heel dag);

(Sien ook Maatskaplike Dienste vir Kinders en Gesinsorgdienste.

**NATIONAL WAR MEMORIAL HEALTH FOUNDATION**, W.O. 2549, 23-1971/2, conducts Jeppe Creche, 36 Ford St., Jeppestown (all day). (National War Memorial Health Foundation — See Family Welfare Services).

**S.A. LEGION OF THE B.C.E.S.L.**, Jhb. Branch, W.O. 233, 33-5174, conducts B.C.E.S.L. Day Nursery, End St. Park, Doornfontein (all day).

(B.C.E.S.L. — see Services for Ex-Servicemen & Women).

**S.A. VROUEFEDERASIE**, Streek Rand Sentraal, W.O. 288, 44-0535,



beheer Belgravia Kleuterskool, Mint en Julesstraat. Malvern (heel dag);

Kleutergenot Kleuterskool, 9de Weg. Parktown North (middagete);

(S.A. Vrouefederasie — sien Gesinsorgdienste.)

UNITED SISTERHOOD OF THE PROGRESSIVE JEWISH CONGREGATION, 41-2409, conducts:

Temple Israel Nursery School, 7 Paul Nel St., Hillbrow;

Temple Shalom Nursery School, 357, Louis Botha Ave., Highlands North;

(United Sisterhood — see Hospital Visiting Services);

Astra Nursery School, Protea St., Kensington (midday meal);

Berea Hebrew Nursery School, Doris St., Berea;

Bluebird Nursery School, Hume Road, Dunkeld;

Bramley Nursery School, Cr. Homestead & Linden Rds.;

Clare Patley Nursery School, Cr. Francis & Kenmere Rds., Yeoville;

David Barris Hebrew Nursery School, 198 Prairie St., Rosettenville;

Fairyland Nursery School, 39, 4th Ave., Bez. Valley (midday meal);

Forest Town Nursery School for Cerebral Palsy, Rannoch Rd., Forest Town (midday meal);

Greenpark Nursery School, Cr. 4th Ave. & 5th St., Parkhurst;

Greenside Nursery School, Chester Rd., Greenside;

Houghton Nursery School, 31, 1st Ave., Houghton;

Jabula Nursery School, George Ave., Sandringham;

Katie Kagan Day Nursery, Cr. Daisy & Bouquet Sts., Rosettenville (all day & conducted by the Katie Kagan Memorial Fund, W.O. 697, P.O. Box 958);

Kensington Nursery School, 79 Orion St., Kensington;

King David Nursery School, Cr. Club & Bedford Rd. Linksfield (midday meal);

L. K. Hurwitz Nursery School, Cr. Fuller & Milbourne Sts., Bertrams (all day);

Maurice Glazer Nursery School, Aida Ave., Cyrildene;

Mayfair Nursery School, 20, 10th Ave., Mayfair;

Mina Lopato Nursery School, Rustenburg & Komatie Rds., Emmarentia Extn.;

Ninth St. Nursery School, Orange Grove;

North Eastern Hebrew Nursery School, Pine Road, Orchards;

Orange Grove Nursery School, 12, Klein St., Rouxville;

Oxford Nursery School, 20, North Ave., Killarney;

Parkview Nursery School, 43 Killkenny Rd., Cr. Wicklow Ave.;

Reb Moshed Nursery School, 91, Sherwell St., Doornfontein;

Riviera Nursery School, Main Ave., Riviera;

Roosevelt Park Nursery School, 11, Amschwitz St., Roosevelt Park;

Roosevelt Park Extn. Nursery

---

*This page was sponsored by*

**JOHANNESBURG CONSOLIDATED INVESTMENT CO., LTD.**

**(Barnato) Group of Mines**

---

School, Cr. Thibault & Anton van Vouw Sts.;

Rosebank Nursery School (O.K. Bazaars) 177, Oxford Road, Rosebank (all day);

Rose Gordon Nursery School, 6, South St., Yeoville;

Sydenham Highlands North Nursery School, 24, Main St., Rouxville; Valley Observatory Nursery School, 11, The Curve, Observatory;

Waldorf Nursery School, 30, Road No. 3, Victory Park;

Waverley Hebrew Nursery School, 3 & 75, Kenneth Rd., Bramley;

Wolfgang Nursery School, Cr. Wolfgang & Williams Rds., Norwood; Yiddish Folk Nursery School, 107, 9th Avenue, Sydenham.

#### NURSERY SCHOOLS FOR RESIDENTS:

Abraham Kriel Kinderhuis Nursery School, Cr. de Vos & Marais Sts., Langlaagte;

Hope Convalescent Home Nursery School, Pallinghurst Rd., Westcliff;

Johannesburg Children's Home Nursery School, Observatory Ave., Observatory;

St. Mary's Orphanage Nursery School, Zinnia St., Rosettenville.

#### MUNICIPAL NURSERY SCHOOLS:

Fordsburg Nursery School, Octavia Hill Flats, Pioneer Rd., Fordsburg;

Judiths Paarl Nursery Schol, 107 Derby Rd., Judiths Paarl;

La Rochelle Nursery School, Cr. Victoria & Forest Rds., La Rochelle; Newlands Nursery School, 43, 12th St., Newlands;

Vrededorp Nursery School, Cr. Solomon & 7th St., Vrededorp;

Nursery Training College for Pre-school Education, 1 Louis Botha Ave., Houghton.

## CRECHES FOR NON-EUROPEAN CHILDREN/ CRECHES VIR NIE-BLANKE KINDERS

AFRICAN SELF HELP ASSOCIATION, W.O. 1499, 44-9690 (see Services for Children)

African Service Committees conduct the following:

Amajelli (80 children), 3125 W/C, Jabavu;

Central Western Jabavu (75 children), Old Farmhouse, Central Western Jabavu;

Dhlabeni (80 children), 1300, Dhlabeni, Moroka;

Emdeni North (35 children), 797 Emdeni North, Moroka;

Emdeni South (35 children), 921b, Emdeni South, Moroka;

Francis Davenport (60 children), Old Farmhouse, 1208, Mofolo Village;

Hlanganani (50 children), Old Farmhouse, Zondi, Moroka;

Ikyalham (115 children), 8839, Orlando West 2;

Imizimoyethu (170 children), 2072, Pimville;

Itumeleng (130 children), 799, Dube Village, Dube;

James Dowd Goodwill (75 children), 264, Moroka North;

Kganyile (75 children), 10879, R.E. Orlando West 2;

Mapetla (35 children), 1533, Mapetla, Moroka;

Margaret Wettstein (75 children), 5470/1, Orlando East;

Meadowlands (50 children), 888, Zone 5, Meadowlands;

Monde (80 children), 731, Mofolo South Orlando;

Monophansi (80 children), 9391, Orlando West 2;

Mpumelelo (30 children), 1392 Zondi 1, Moroka;

Mvulo (80 children), 731 Tladi, Moroka;

Naledi (30 children), 1720 Naledi, Moroka;

Nandi (35 children), 2300 Zola 2, Moroka;

Phiri (35 children), 10b, Phiri, Moroka;

Pilanzima (80 children), 68 Mofolo Village, Orlando;

Senoane (35 children), 336 Senoane, Moroka;

Sizanani (45 children), 2753 Zola 1, Moroka;

Thembalihle (100 children), 85/6, Sunvalley, Pimville;

Tiendleleni Dishumeleni (30 children), 144 Chiawelo, Moroka;

Vuka Pansi (80 children), 477/8 Orlando East;

Vuyani (45 children), 566 Mofolo North;

Winifred Kenciloe (80 children), 1506 Dube South.

**ASSOCIATION FOR THE CARE OF COLOURED YOUTH.** W.O. 2396. P.O. Box 189, Fordsburg, Jhb., (see Services for Children and Young People) conducts:

Dorcas Day Nursery, Opposite Superintendent's Office, Western Township (60 children).

**CHILD WELFARE SOCIETY,** W.O. 192, Phone 22-0951 (see also Services for Children & Family Welfare Services), conducts:

Alexandra Creche, First Avenue, Alexandra Township;

Orlando Creche, Stand 7564, Orlando West.

**CITY HEALTH DEPARTMENT,** 18 Hoek St., Jhb., 22-0741, conducts: Chiawelo Centre, Stand 2167, Moroka;

Jabavu Day Nursery, Stand 1390, Jabavu.

**E K U T U L E N I ANGLICAN CHURCH MISSION,** W.O. 772. P.O. Box 1131 (see also Family Welfare Services) conducts:

Dikonaneng, Stand 6455/7, Orlando East;

Leseding, Dube.

**JOHANNESBURG & DISTRICT CAPE COLOURED WELFARE SOCIETY,** W.O. 667, P.O. Box 9565, conducts:

Coronationville Creche;

Noordgesig Nursery School.

**K I N D E R S O R G V E R E N I G I N G.** W.O. 192, Telefoon 22-0951, beheer die volgende:

Alexandra Creche, Eerstelaan, Alexandra Dorpsgebied;

Orlando Creche, Orlando;

(Sien ook Maatskaplike Dienste vir Kinders en Gesinsorgdienste, Kindersorgvereniging).

**NON-EUROPEAN AFFAIRS DEPARTMENT,** 80, Albert St., 23-2101, sponsors:

Mavis Isaacson Centre, Stand 1586, Jabavu;

Morris Isaacson Centre;

Yetta Nathan;

Tladi Play Centre.

**ORGANISATION FOR CRECHES (ORGANISASIE VIR KINDERBEWAARHUISE),** W.O. 2503, 259, Maselela St., Zone 3, Meadowlands. Sponsored and financed by the N.G. Sendingkerk and conducts the following:

---

*This page was sponsored by*  
**THE REMBRANDT CORPORATION**

---

Emandleni Creche. 431, Igwigwi St., Zone 6. Meadowlands;  
Enkolweni Creche. 43, Jama St., Zone 4. Meadowlands;  
Thabong Creche, 329, Mosasawane St., Zone 1. Meadowlands;  
Tsohang Creche. 518, Lesogo St., Zone 8. Meadowlands;  
Tsweleng Creche, 526 Mpolokeng St., Zone 3. Meadowlands.  
SALVATION ARMY. P.O. Box 1018, 22-4914, conducts:

Jabavu Creche, Stand 883/5.  
WITWATERSRAND WELFARE COMMITTEE OF BANTU WOMEN. W.O. 2125, Sec.: 37, Moshoeshoe, P.O. Natalspruit, conducts:  
Eastern Native Township Creche. Stand 1;  
Emdeni, Stand 513A;  
Mofolo, Stand 319;  
Nobantu, Jabulani, Stand 1402;  
Setsabelo, Stand 1980, Dube;  
Zola, Stand 1090, Zola.

## NATIONAL COUNCILS IN JOHANNESBURG/ NASIONALE RADE IN JOHANNESBURG

NATIONAL COUNCIL FOR THE CARE OF CRIPPLES IN SOUTH AFRICA, W.O. 706, Management House, Melle Street, Braamfontein. P.O. Box 10173, Johannesburg, 44-3761.

NATIONAL WAR MEMORIAL HEALTH FOUNDATION, W.O. 338, P.O. Box 2313, Jhb., 34-2055.

NOODHULPLIGA (NASIONALE HOEFKANTOOR), Jutastraat 90, Braamfontein, Posbus 1074, Jhb., 762-6452.

SOUTH AFRICAN NATIONAL COUNCIL FOR CHILD WELFARE. W.O. 79, 507. Fleetway House, Bree Street, P.O. Box 8539, Jhb. 835-2003.

SOUTH AFRICAN NATIONAL COUNCIL FOR THE DEAF, W.O. 309. 202. N.G. Church Administration Buildings, 119 de Korte Street, Braamfontein, P.O. Box 6636, Jhb., 44-9804.

SOUTH AFRICAN NATIONAL COUNCIL FOR MARRIAGE GUIDANCE & FAMILY LIFE. W.O. 1873, Welfare House, 168 Fox St., Jhb., 23-5665.

SOUTH AFRICAN NATIONAL COUNCIL for MENTAL HEALTH,

W.O. 72, 510, Empire Bldg., Kruis St., P.O. Box 2587, Jhb., 22-0201.

SOUTH AFRICAN NATIONAL COUNCIL ON ALCOHOLISM, W.O. 1995, 319, Charter House. 13. Rissik St., P.O. Box 10134, Johannesburg, 33-2748.

SOUTH AFRICAN NATIONAL TUBERCULOSIS ASSOCIATION. W.O. 590, 600, Leisk House, Bree St., P.O. Box 10501, Jhb., 23-3030.

SOUTH AFRICAN LEGION OF THE B.C.E.S.L., Duncan House, 11, de Villiers St., 835-4851.

SOUTH AFRICAN RED CROSS SOCIETY (NATIONAL COUNCIL), 14, Hollard St., P.O. Box 8726, Jhb., 835-3986.

YOUNG MEN'S CHRISTIAN ASSOCIATION S.A. NATIONAL COUNCIL, W.O. 887, 104 Rissik St., P.O. Box 7716, Jhb., 44-1561.

YOUNG WOMEN'S CHRISTIAN ASSOCIATIONS OF SOUTH AND CENTRAL AFRICA, W.O. 179. 315/317 York House, Rissik St., P.O. Box 5436, 835-4010.

**DEPARTMENT OF SOCIAL WELFARE AND  
PENSIONS, SOUTHERN TRANSVAAL  
REGIONAL OFFICE**

**NEW GOVERNMENT BUILDING, HARRISON STREET,  
PRIVATE BAG 3, JOHANNESBURG. 835-5111.**

This office controls:

- (i) Eight branch offices situated in Germiston, Benoni, Springs, Krugersdorp, Ermelo, Vereeniging, Potchefstroom and Klerksdorp.
- (ii) Places of Safety and Detention: Norman House Place of Safety and Detention, Edenvale. Jubileum Place of Safety and Detention, Boksburg.

*Services:*

The Administration of the Regional Office consists of a Professional and an Administrative Division.

*The Professional Division* controls professional services rendered mainly in terms of the Children's Act, Retreats and Rehabilitation Centres Act, Criminal Procedure Act, and in certain respects the Welfare Organizations Act. These services include:

preventative services, reconstruction services, clinical services, investigations, inter alia, for the relevant courts, statutory supervision probation and aftercare.

*The Administrative Division* deals with the following:

- (a) Old Age Pensions, Blind Persons Pensions, War Veterans Pensions.
- (b) Disability Grants, Maintenance Grants and Family Allowances.
- (c) Temporary Public Assistance.
- (d) Medical Aids.
- (e) Admission to State homes for the Aged.
- (f) Admission to State settlements for the physically unfit.
- (g) Administration of the Welfare Organizations Act.

---

*This page was sponsored by*  
**UNION ACCEPTANCES LTD.**

---

**DEPARTEMENT VAN VOLKSWELSYN EN  
PENSIOENE, SUID-TRANSVAAL  
STREEKKANTOOR**

**NUWE STAATSGEBOU, HARRISONSTRAAT,  
PRIVAATSAK 3, JOHANNESBURG. 835-5111.**

Hierdie kantoor beheer:

- (i) agt takkantore geleë te Germiston, Benoni, Springs, Krugersdorp, Ermelo, Vereeniging, Potchefstroom en Klerksdorp.
- (ii) twee plekke van veiligheid en bewaring, nl.:
  - (a) Normanhuis Plek van Veiligheid en Bewaring, Edenvale, en
  - (b) Jubileum Plek van Veiligheid en Bewaring, Boksburg.

*Dienste:*

Die Administrasie van die Streekkantoor word verdeel in:

- (i) Die Vakkundige Afdeling en
- (ii) Die Administratiewe Afdeling.

*Die Vakkundige Afdeling* lewer in hoofsaak die dienste wat voortspruit uit die administrasie van die Kinder-

wet, Wet op Toevlugte en Rehabilitasiesentrums, die Strafproseswet en in sekere opsigte die Wet op Welsynsorganisasies. Die dienste sluit in: voorkomingsdienste, rekonstruksiedienste, kliniese dienste, ondersoek, bv. vir die onderskeie howe, statutêre toesig, proef en nasorg.

*Die Administratiewe Afdeling* lewer dienste in verband met die volgende:

- (a) Ouderdoms-, Blinde- en Oudstryderspensioene.
- (b) Ongeskiktheids-, Onderhouds- en Gesinstoelae.
- (c) Maatskaplike Noodhulp.
- (d) Mediese Hulpmiddels.
- (e) Toelating tot Staatsouetehuse.
- (f) Toelating tot Staatsnedersettings vir fisies ongeskikte persone.
- (g) Administrasie van die Wet op Welsynsorganisasies.

## INDEX/INDEKS

### SERVICES FOR THE WHITE SECTION OF THE COMMUNITY DIENSTE VIR BLANKES

	<i>Page</i>
Abraham Kriel Kinderhuis .....	19, 32
Adventist Welfare Services .....	6
Alan Isaacs Camp of the United Progressive Congregation of Jhb. ....	27
Alcoholics Anonymous .....	26
Anti-Cruelty League .....	27
Apostolic Faith Mission Welfare Council .....	6
Apostolic Faith Mission Children's Homes .....	19
Apostolic Faith Mission Old Age Home .....	14
Arcadia South African Jewish Orphanage .....	19
Armesorgraad van die Witwatersrand van die N.G. Kerk van Transvaal ..	6, 16, 18, 21, 28
Association for the Aid of Schools for Children in Need of Special Care .....	22
Athonian Retreat Home .....	14
Avalon .....	23
Blanket Girls Association .....	6
B'nai B'rith — see First B'nai B'rith Women's Chapter .....	8
Bond van Randse Moeders .....	14
Booth Memorial Young Women's Hostel — see Salvation Army, Re- creational Facilities & Hostels .....	28
Boy Scouts' Association .....	27
Boys' Brigade .....	28
Bramley Cottages) — see Rand Aid Association Old People's Homes	16
Bramley House } — sien Randse Hulpvereniging en Tehuise vir Bejaardes .....	16
Brixton Ouetehuis .....	14
Candlelight Club .....	14
Catholic Friends of Tara .....	12
Catholic Women's League of the Diocese of Jhb. ....	6
Catholic Women's League Adoption Society .....	18, 21
Central Methodist Deaconess Society .....	7
Child Welfare Society .....	7, 17, 18, 19, 30
Civilian Blind Society — see Society to Help Blind .....	25
Cluny Farm Centre Trust .....	23
Colonel Rowland Home .....	14
Congregational Church Food Distribution Service .....	7
Cotlands Babies Sanctuary .....	18, 19, 21
Cottesloe Hostel — see Rand Aid Association Services for Alcoholics	26
— sien Randse Hulpvereniging Dienste vir Alkoholiste	26
Cransley House — see Rand Aid Association Old People's Homes .....	16
— sien Randse Hulpvereniging Tehuise vir Bejaardes	16

*This page was sponsored by*

**GOLD FIELDS OF SOUTH AFRICA LIMITED**

Cresset House .....	22
Cripples' Care Association of the Tvl. ....	24
Deaf & Dumb Association .....	14, 24
Dean's Shelter .....	14
Deansgate — see Dean's Shelter .....	14
Deutscher Frauenverein .....	7, 15
Disabled Ex-Servicemen's Welfare Fund .....	24
Easter Stamp Fund for Cripples .....	24
Epworth Children's Homes .....	19
Family Planning Clinic (Tvl. Branch Asscn. of the National Council for Maternal & Family Welfare) .....	7
Firland's Boys' Home — see Salvation Army Children's Homes .....	21
First B'nai B'rith Women's Chapter .....	8
Forest Town School for Cerebral Palsied Children .....	22
Frida Sichel Occupational Centre .....	24
Gerald Fitzpatrick House .....	14
German Old Age Home (Evangelical Lutheran) .....	15
Girl Guides Association of South Africa, Tvl. Province .....	28
Girls' Life Brigade .....	28
God's Providence House — see Dean's Shelter .....	14
Grantley Children's Home — see Child Welfare Soc. Children's Homes — sien Kindersorgvereniging Kinderhuise .....	19 20
Guild Cottage .....	20
Guild of Loyal Women .....	8, 20
Gunners' Association .....	25
Hamlet, The .....	22
Happiness for the Handicapped Organisation .....	24
Harmonie .....	28
Hebrew Congregation Etz-Chayim .....	15
Helen House — see Rand Aid Association Old People's Homes .....	16
— sien Randse Hulpvereniging Tehuise vir Bejaardes .....	16
Hellenic Old Age Home .....	15
Hoernle Cottage — see Child Welfare Society's Children's Homes .....	19
— sien Kindersorgvereniging Kinderhuise .....	20
Holiday Homes for the Aged .....	15
Homes & Orphans Fund .....	17
Hope Convalescent Home .....	22, 32
Hope Homes Government School .....	22
Hope Training Home .....	22
Howard Pim House — see Child Welfare Society's Children's Homes — sien Kindersorgvereniging Kinderhuise .....	19 20
Inglenook — see Salvation Army Services for Unmarried Mothers .....	19
Jewish Society for Visiting the Sick .....	12
Jewish Women's Benevolent & Welfare Society .....	8, 24
Johannesburg Child Guidance Clinic .....	17
Johannesburg Children's Home (Undenominational) .....	20, 32
Johannesburg Co-ordinating Council of Social Welfare Organisations .....	5
Johannesburg Coronation Foundation (Queenshaven) .....	15
Johannesburg Council for Adult Education .....	5
Johannesburg Council for the Care of the Aged .....	5, 15



Johannesburg Housing Utility Company .....	8
Johannesburgse Jeugdiensraad .....	5, 28
Johannesburg Jewish Helping Hand & Burial Society .....	8
Johannesburgse Koördinerende Raad vir Maatskaplike Welsynsorg. ....	5
Johannesburg Marriage Guidance Society .....	8
Johannesburg Optometric Clinic .....	12
Johannesburgse Raad vir die Versorging van Bejaardes .....	5, 15
Johannesburg Youth Council .....	5, 28
Joint Fund for the Blind .....	24
Jubileum Place of Safety .....	35
Jubileum Plek van Veiligheid .....	36
Kindersorgvereniging .....	9, 17, 19, 20, 30
Kinderstrand .....	18
Kupugani (Nutrition Corporation Ltd.) .....	12
Legal Aid Bureau .....	9
Magen David Adom in Southern Africa .....	12
Malvern & Belgravia Boys' & Girls' Club .....	14, 28
Maria Kloppers Kinderhawe .....	20
Mary Immaculate Children's Centre .....	20
Matigheidsbond .....	26
Mayfair Y.M.C.A. ....	28
Mental Health Society of the Witwatersrand .....	12
Missions to Seamen, Tvl. Branch .....	30
Moth Memorial Cottage Homes .....	15
Mothwa Haven .....	15
Mount Collins — see Rand Aid Association Services for Alcoholics .....	26
— sien Randse Hulpvereniging Dienste vir Alkoholiste .....	26
Murray House — see Salvation Army Old People's Homes .....	16
National Council of Women, Jhb. Branch .....	6
National War Memorial Health Foundation .....	9, 30
Naval Officers' Association Charitable Fund .....	25
Navy Welfare Fund .....	25
Nazareth House .....	15, 20
Noradene Children's Home — see Child Welfare Society's Children's .....	
Noradene Children's Home — see Child Welfare Soc. Children's Homes .....	19
— sien Kindersorgvereniging Kinderhuise .....	20
Norman House Place of Safety .....	35
Normanhuis Plek van Veiligheid .....	36
Northcliff House — see S.A. Nurses Trust Fund Old People's Home .....	16
Northlea — see Rand Aid Association Services for Alcoholics .....	26
— sien Randse Hulpvereniging Dienste vir Alkoholiste .....	26
Nutrition Corporation Ltd. (Kupugani) .....	12
Ondersteuningsraad van die N.H. Kerk .....	9
Ons Tuis .....	15
Our Parents Home .....	15
Park House Young Men's Hostel — see Salvation Army Recreational .....	
Facilities & Hostels .....	29

*This page was sponsored by*

**HIND BROS & CO. LIMITED**

People's Dispensary for Sick Animals .....	27
Pioneer House .....	15
President Kruger Tehuis (Children's Homes & Orphanage) .....	20
Princess Alice Anningstehuis .....	19, 20, 21
Princess Alice Adoption Home .....	18, 19 21
Queen Alexandra Home .....	15
Queenshaven (Jhb. Coronation Foundation) .....	15
Queen Victoria Hospital Women's Welfare Committee .....	12
Ralph Hahn Hostel .....	22
Rand Aid Association .....	9, 15, 26
Rand Daily Mail Christmas Fund .....	9
Rand Epileptic Employment Association .....	24
Randse Hulpvereniging .....	10, 15 26
Randjeslaagte .....	16
Randse Jeugtehuis .....	28
Rand Women Pioneers .....	16
Red Cross Time Club .....	12, 16, 18, 24, 28
Refugee Organisation of South Africa .....	10
Reid House — see Rand Aid Association Old People's Homes .....	16
— sien Randse Hulpvereniging Tehuise vir Bejaardes .....	16
Royal Air Force Association .....	25
St. Anne's Old Ladies Residences .....	16
St. Christopher's Hostel for Women .....	25
St. Dunstan's .....	25
St. George's Home for Boys .....	20
St. Giles Association .....	25
St. John Ambulance Association .....	12
St. Joseph's Training School .....	20
St. Mary's Orphanage .....	20, 32
St. Vincent de Paul Society .....	10, 18
St. Vincent School for the Deaf .....	22
Salvage Production .....	10
Salvation Army .....	10, 16, 19, 21, 28, 29
Salvation Army Men's Hostel .....	16
Samaritaanse Fonds Suid-Randse Hospitaal .....	13
San Michele .....	22
San Salvador .....	23
Sandringham Home for Ex-Servicemen .....	16
Sappers' Association .....	26
Save the Children Fund .....	18
Selwyn Segal Hostel .....	23, 25
Service Products — see Disabled Ex-Servicemen's Welfare Fund .....	24
Social Services Association .....	10
Social Workers' Association .....	30
Society for the Jewish Handicapped — see Selwyn Segal Hostel .....	23
Society for the Prevention of Cruelty to Animals .....	27
Society for the Welfare of Backward & Retarded Persons—see the Hamlet .....	22
Society for the Welfare of the Jewish Deaf—see Ralph Hahn Hostel .....	22
Society to Help Civilian Blind .....	25
Sons of England Children's Home .....	21
Sonskyn .....	29
S.A. Air Force Association .....	26
S.A. Association of Youth Clubs .....	29
S.A. Blind Workers Organisation .....	25
S.A. Christmas Stamp Fund .....	18
S.A. Guidedogs Association for the Blind .....	25

S.A. Institute of Race Relations .....	30
S.A. Jewish Board of Deputies .....	10
S.A. Jewish Ex-Servicemen's Legion .....	26
S.A. Legion of the B.C.E.S.L. ....	26, 30
S.A.N.T.A., Jhb. Branch .....	13
S.A. National Council on Alcoholism .....	26
S.A. Noodhulpliga .....	13
S.A. Nurses Trust Fund .....	16
S.A. Ort Oze .....	18
S.A.R. Children's Home .....	21
S.A. Red Cross Society .....	13, 16
S.A. Temperance Alliance .....	26
S.A. Vroufederasie .....	10, 14, 21, 28, 29
Star Seaside Fund .....	18
Strathyre Girl's Home — see Salvation Army Children's Homes .....	21
Students Christian Association Play Centre .....	29
Sunbeam Children's Club .....	18
Sunchine Club .....	10
The Annexe — see Rand Aid Association Services for Alcoholics .....	26
— sien Randse Hulpvereniging Dienste vir Alkoholiste .....	26
Toc H (S.A.) Men's Section .....	10
Toc H (S.A.) Women's Section .....	10
Transvaal Association for the Care of Cerebral Palsy (Spastic) — see Forest Town School for Cerebral Palsied Children .....	22
Transvaal Association of Boys' Clubs .....	29
Transvaal Branch Association of the National Council for Maternal & Family Welfare (Family Planning Clinic) .....	7
Transvaal Jewish Welfare Council .....	6, 10
Transvaal Memorial Hospital for Children Ladies Visiting Committee .....	13
Transvaal Quaker Service Fund .....	11
Uitkomstehuis .....	18
Uncle Ted's Fund for Handicapped Children .....	23
Union of Jewish Women of Southern Africa, Jhb. Branch .....	6, 13, 16
United Cerebral Palsy Association of South Africa .....	23
United Sisterhood of the United Progressive Jewish Congregation .....	13, 31
Vroue en Moeder Beweging van die A.T.K.V. (S.A.S. en H.) .....	11
Welsynsraad van die Apostoliese Geloofsending in S.A. ....	11, 14, 19
William Mitchell House — see Rand Aid Association Services for Alcoholics .....	26
— sien Randse Hulpvereniging Dienste vir Alkoholiste .....	26
Witwatersrand Cambrian Society Benevolent Fund .....	11
Witwatersrand Hebrew Benevolent Association .....	11
Witwatersrand Jewish Aged Home .....	16
Witwatersrand Ouetchuis .....	16
Women's Christian Temperance Union of the Tvl. ....	26
Women's Civic Benevolent Society — see Gerald Fitzpatrick House .....	14
Woodside Sanctuary .....	23

*This page was sponsored by*

**CAPE ASBESTOS SOUTH AFRICA (PTY.) LTD.**

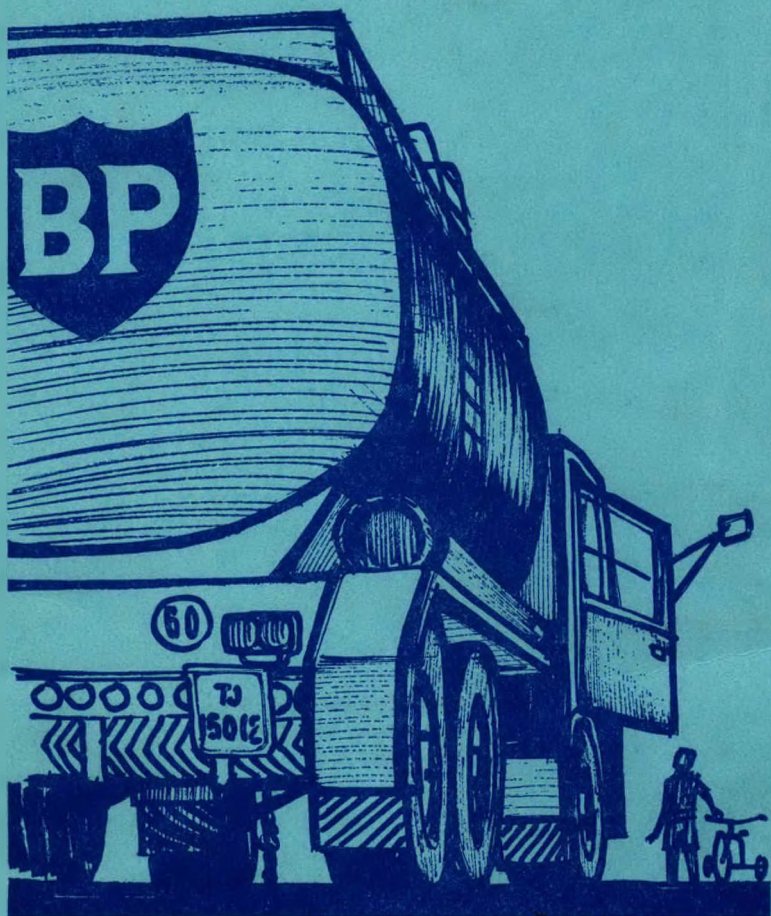
Y.M.C.A., Jhb. Branch .....	29
Y.W.C.A., Jhb. Branch .....	29
Y.W.C.A., Parktown Hostel .....	29
Youth Advice Bureau, Johannesburg .....	18
Youth Hostels Association .....	29

*SERVICES FOR THE NON-WHITE COMMUNITY*  
*DIENSTE IR DIE NIE-BLANKES*

African Children's Feeding Scheme .....	11, 17
African Self-Help Association .....	17, 28, 32, 33
Alexandra Anti-Tuberculosis Association .....	11
Alexandra Health Centre & University Clinic .....	11
Alexandra Service Committee .....	6
Anti-Cruelty League .....	27
Association for the Care of Coloured Youth .....	17, 33
Bantu Animal Welfare Society .....	27
Bantu Men's Social Centre .....	27
Bantu Refuge .....	14
Bantu Sports Club Trust .....	27
Baragwanath Hospital Comforts Committee .....	12
Bethany Girls' Home — see Salvation Army Children's Home .....	21
Blanket Girls Association .....	6
Boys' Brigade .....	28
Boy Scouts Association .....	27
Catholic Women's League of the Diocese of Jhb. ....	6
Catholic Women's League Adoption Society .....	21
Child Welfare Society .....	7, 17, 33
Coloured & Indian Blind Welfare Association .....	23
Coloured Service Products .....	24
City Health Dept. — Creches .....	33
Ekutuleni Anglican Church Mission .....	7, 33
Entokozweni Family Welfare Centre .....	7, 12, 17, 28
Ezenzeleni — see Tvl. Society for the Care of Non-European Blind .....	24
Family Planning Clinic (Tvl. Branch Association of the National Council for Maternal & Family Welfare) .....	7
Father Huddleston's Charitable Funds .....	8
Girl Guides Association of South Africa, Tvl. Province .....	28
Girls' Life Brigade .....	28
Ikwezi Boys' & Girls' Youth Club .....	28
Johannesburg & District Cape Coloured Welfare Society .....	17, 33
Johannesburg Indian Social Welfare Association .....	8
Johannesburg Planning Council for Non-European Social Work .....	6
Joint Fund for the Blind .....	24
Jordan House — see Rand Aid Association Old People's Homes .....	16
— sien Randse Hulpvereniging Tehuise vir Bejaardes .....	16
Kindersorgvereniging .....	7, 17, 33
Kupugani (Nutrition Corporation Ltd.) .....	12

Legal Aid Bureau .....	9
Margaret Ballinger Home .....	22
Mary Anstey Home .....	15
Mental Health Society of the Witwatersrand .....	12
Mission Schools Feeding (Society of St. Vincent de Paul) .....	18
Mofolo Youth Centre — see Salvation Army Children's Homes .....	21
Muslim Social Welfare Fund .....	9
Native Welfare Section, Non-European Affairs Department .....	9
Non-European Affairs Department Welfare Fund .....	9
Organisation for Creches .....	33
Orlando Children's Home — see Child Welfare Society's Children's Homes .....	19
--- sien Kindersorgvereniging Kinderhuise .....	20
Orlando Home for the Aged .....	15
Orlando Y.M.C.A. ... ..	28
People's Dispensary for Sick Animals .....	27
St. John Ambulance Association .....	12
St. John Ophthalmic Foundation .....	13
St. Joseph's Home for Coloured Children .....	20
St. Joseph's Training School .....	20
Salvation Army .....	21, 34
Save the Children Fund .....	18
Social Services Association ... ..	10
S.P.C.A. ....	27
S.A. Association of Youth Clubs .....	29
S.A. Coloured Ex-Servicemen's Legion .....	26
S.A. Christmas Stamp Fund .....	18
S.A. Institute of Race Relations .....	30
S.A. Red Cross Society .....	13
Transvaal Association of Non-European Boys' Clubs .....	29
Transvaal Coloured Children's Seaside Fund .....	18
Transvaal Girl Wayfarers Association .....	29
Transvaal Quaker Service Fund .....	11
Transvaal Society for the Care of Non-European Blind .....	25
United Cerebral Association of South Africa .....	23
Waterval Islamic Institute .....	18
Witwatersrand Shangaan Welfare Association .....	11
Witwatersrand Welfare Committee of Bantu Women .....	34
Zenzele Y.W.C.A. ....	30

Printed by Prompt Printing Co. (Pty.) Ltd.,  
11 Harris Street. Westgate,  
Johannesburg.



## IN SO MANY WAYS...

Lubricants for industry. Oil for ocean liners.  
Power for the big jets. Heat for homes. Fuel  
for farming. Everywhere. Everyday...



serves South Africa and the world

**Collection Number: A1132**

**Collection Name: Patrick LEWIS Papers, 1949-1987**

***PUBLISHER:***

*Publisher:* Historical Papers Research Archive, University of the Witwatersrand, Johannesburg, South Africa

*Location:* Johannesburg

©2016

***LEGAL NOTICES:***

**Copyright Notice:** All materials on the Historical Papers website are protected by South African copyright law and may not be reproduced, distributed, transmitted, displayed, or otherwise published in any format, without the prior written permission of the copyright owner.

**Disclaimer and Terms of Use:** Provided that you maintain all copyright and other notices contained therein, you may download material (one machine readable copy and one print copy per page) for your personal and/or educational non-commercial use only.

This collection forms part of a collection, held at the Historical Papers Research Archive, University of the Witwatersrand, Johannesburg, South Africa.