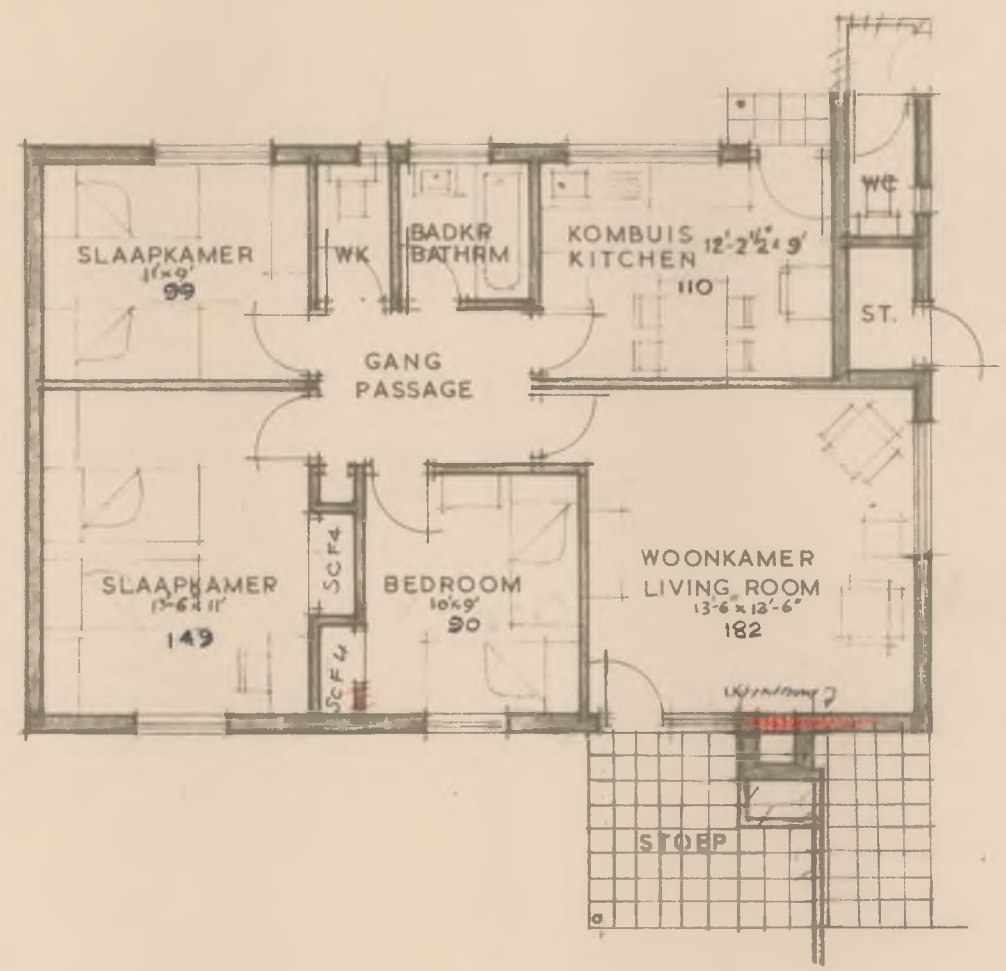
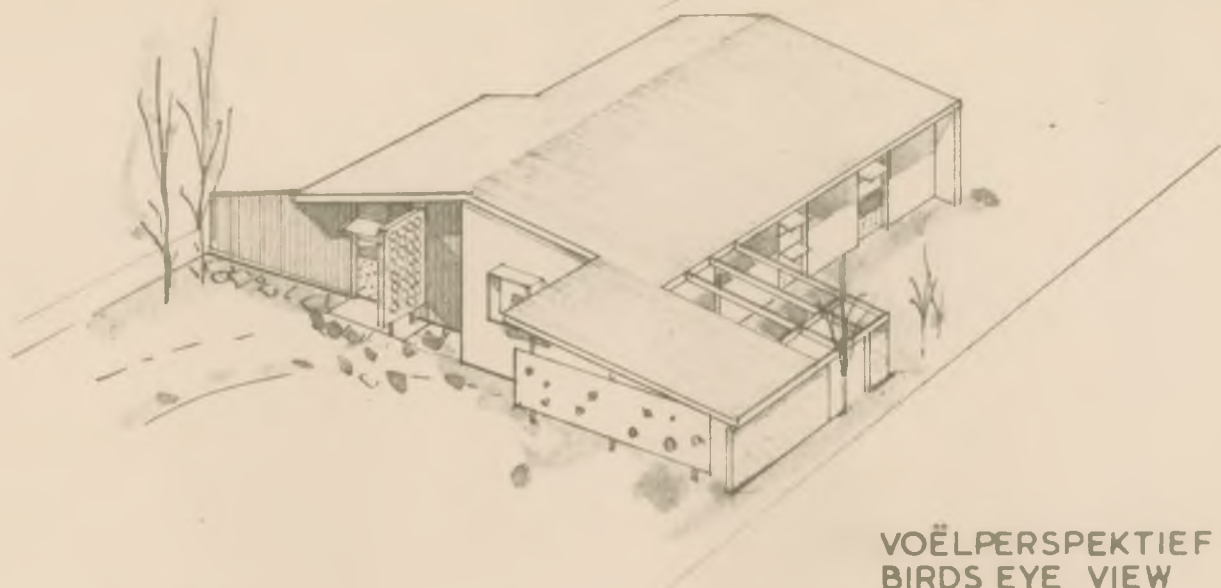




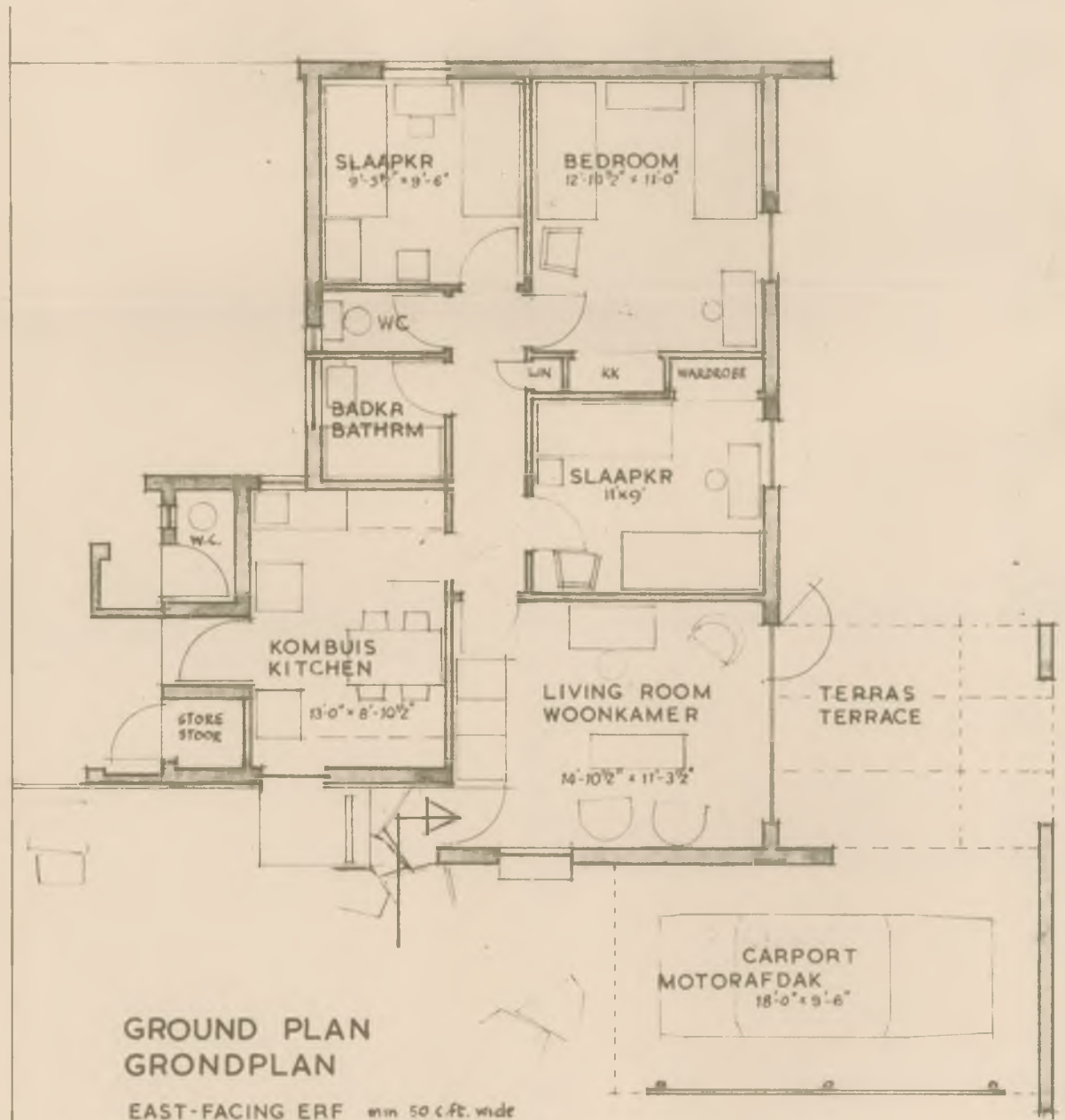
PERSPEKTIEF
PERSPECTIVE



UITLEG VIR NOORDFRONT ERF
LAYOUT FOR NORTH-FACING ERF



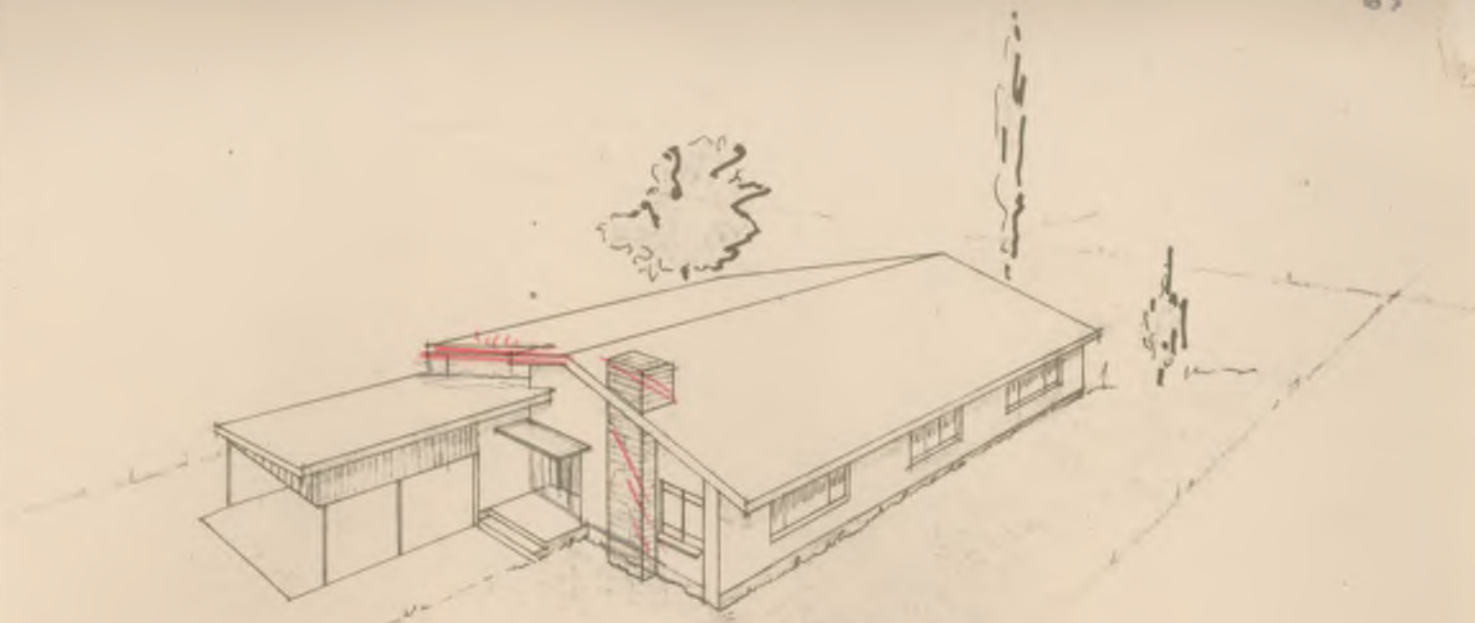
VOËLPERSPEKTIEF
BIRDS EYE VIEW



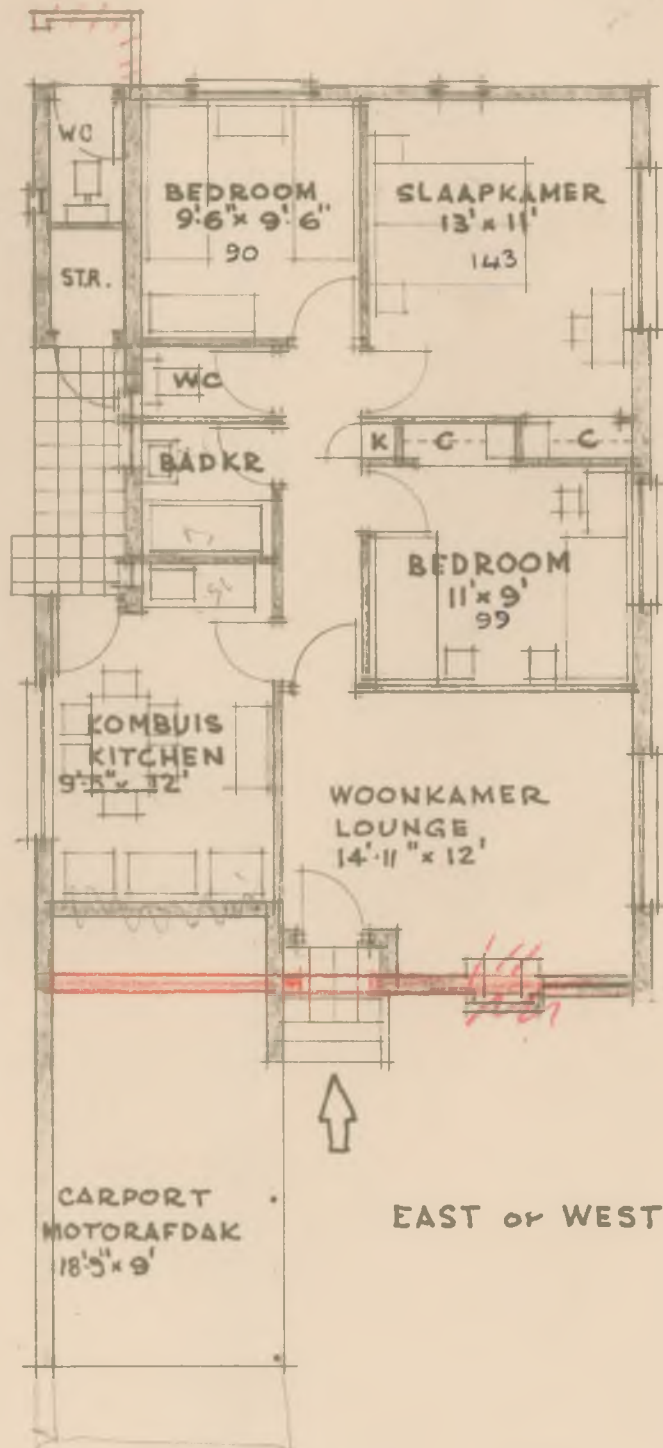
GROUND PLAN
GRONDPLAN

EAST-FACING ERF min 50 c.ft. wide
OOSFRONT ERF min 50 k.ft wydte.



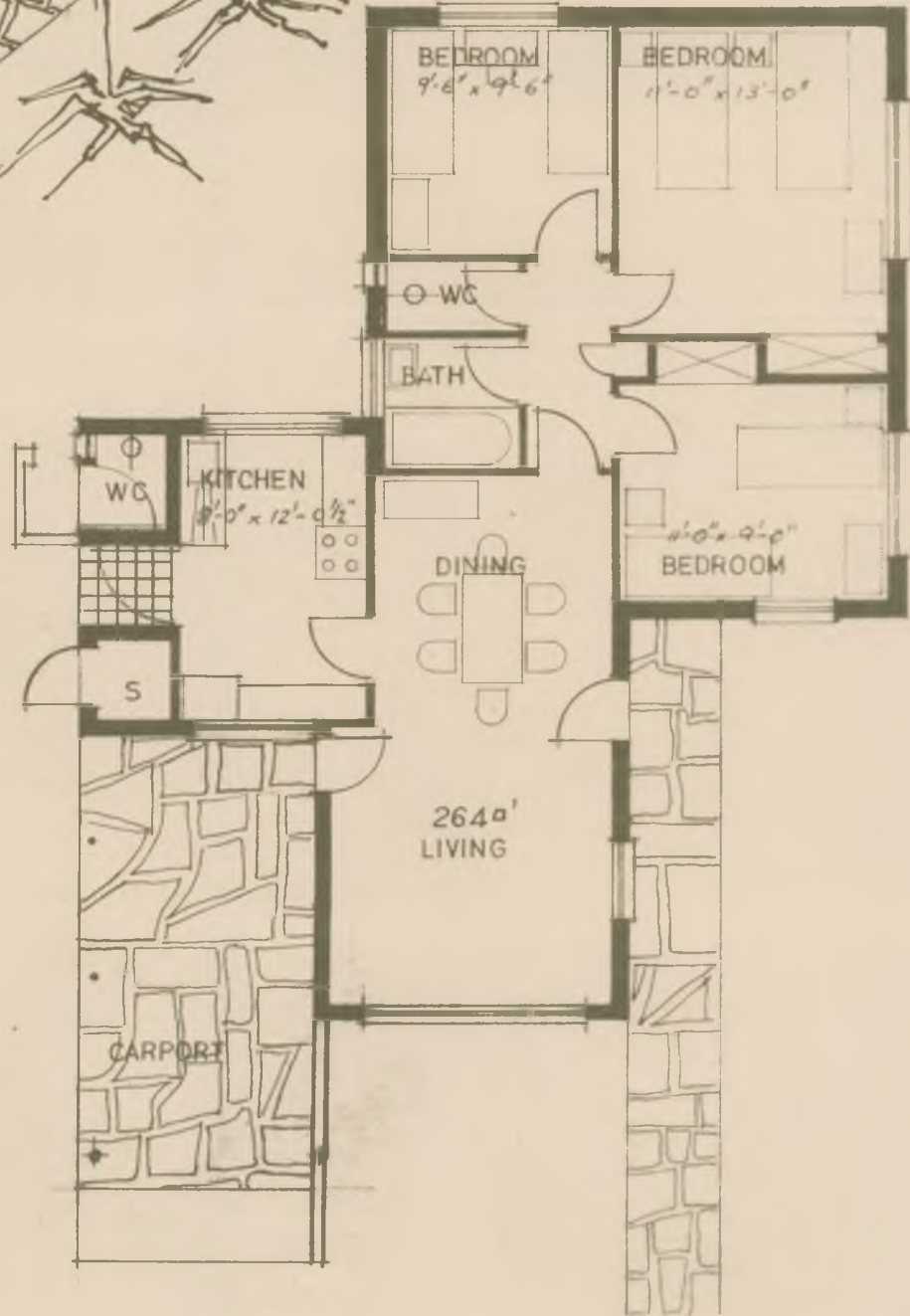
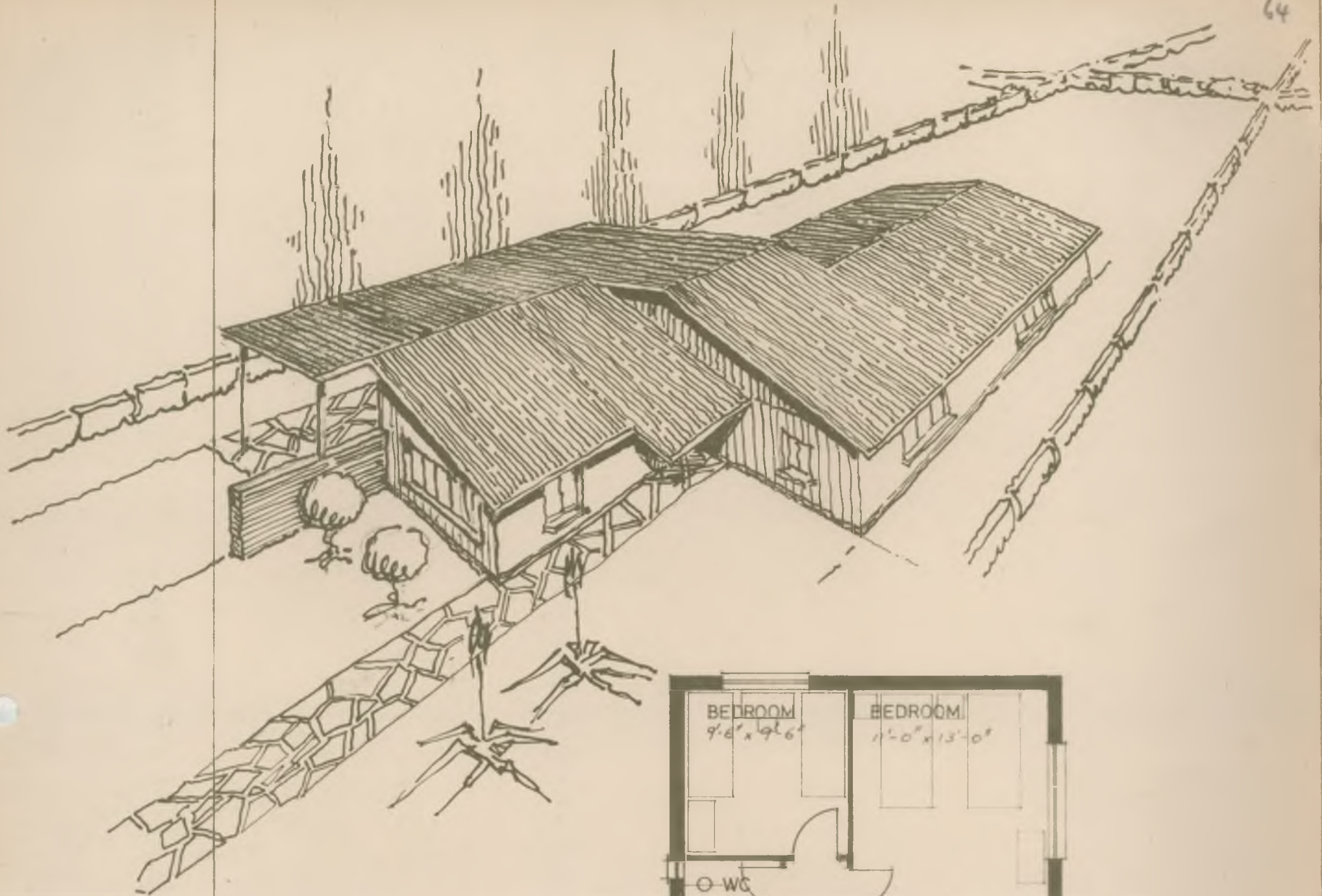


BIRDS EYE VIEW
VOËLPERSPEKTIEF



25'3" x 37'4"
= 947

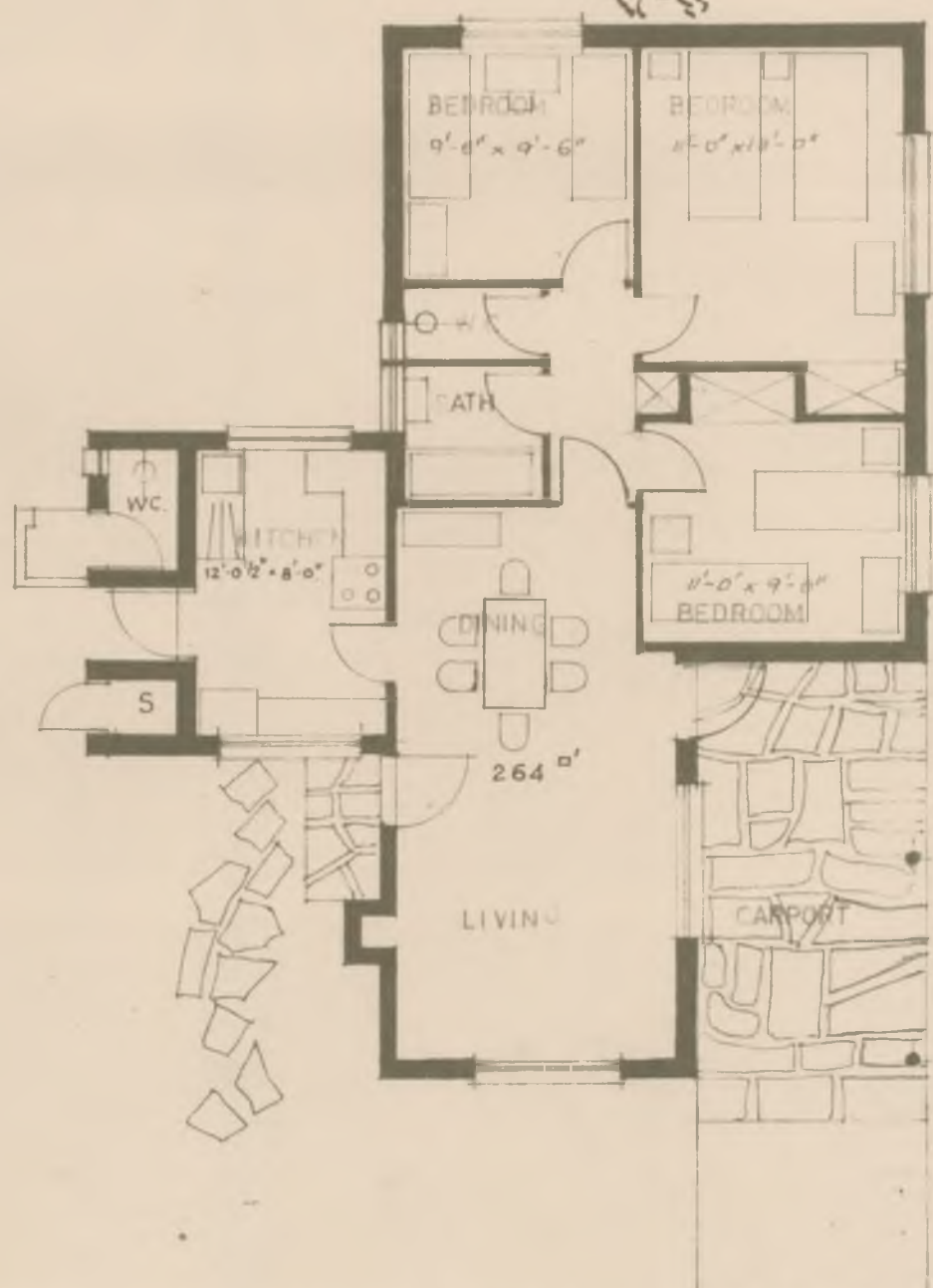
EAST or WEST facing erf.



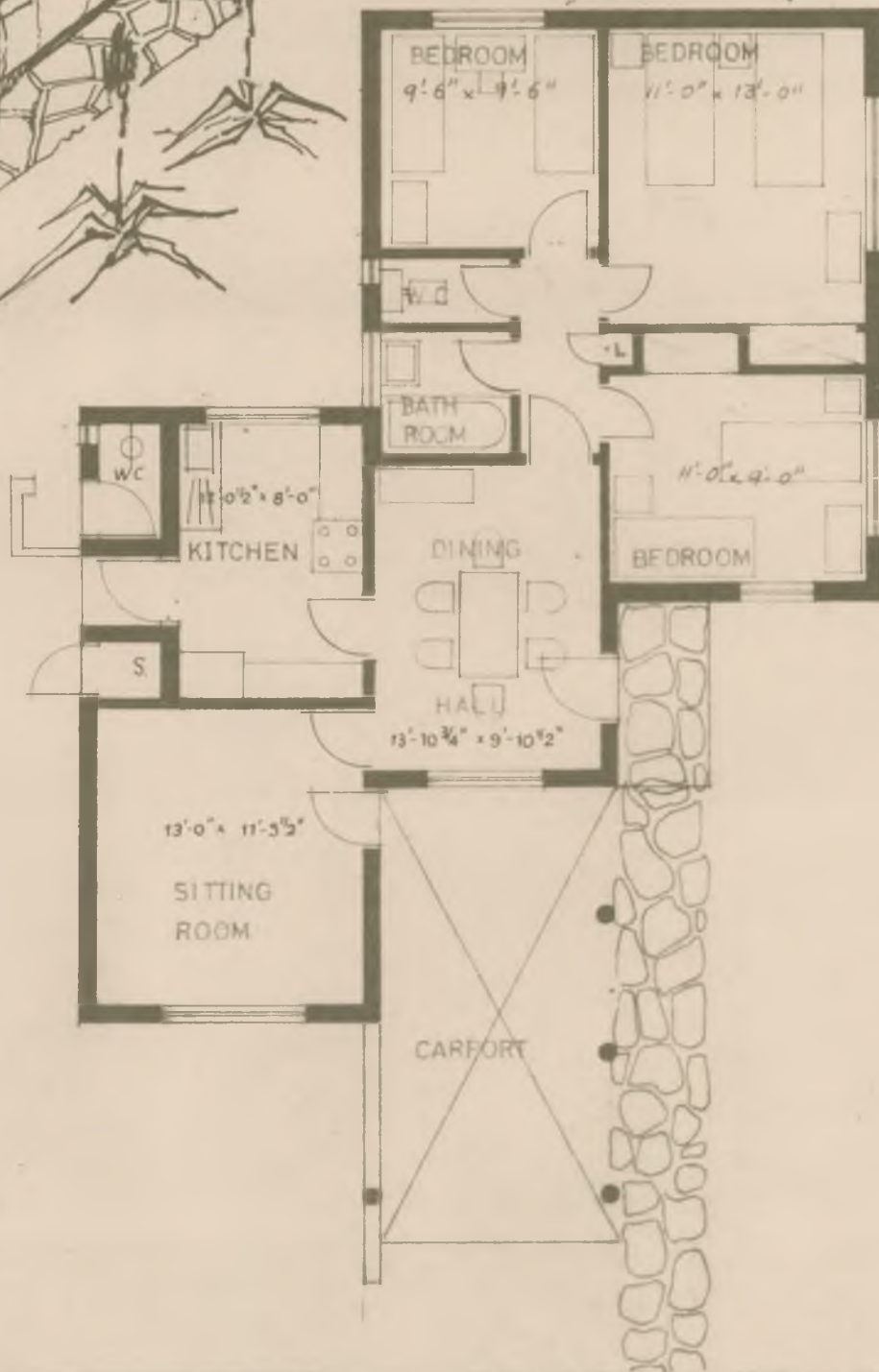
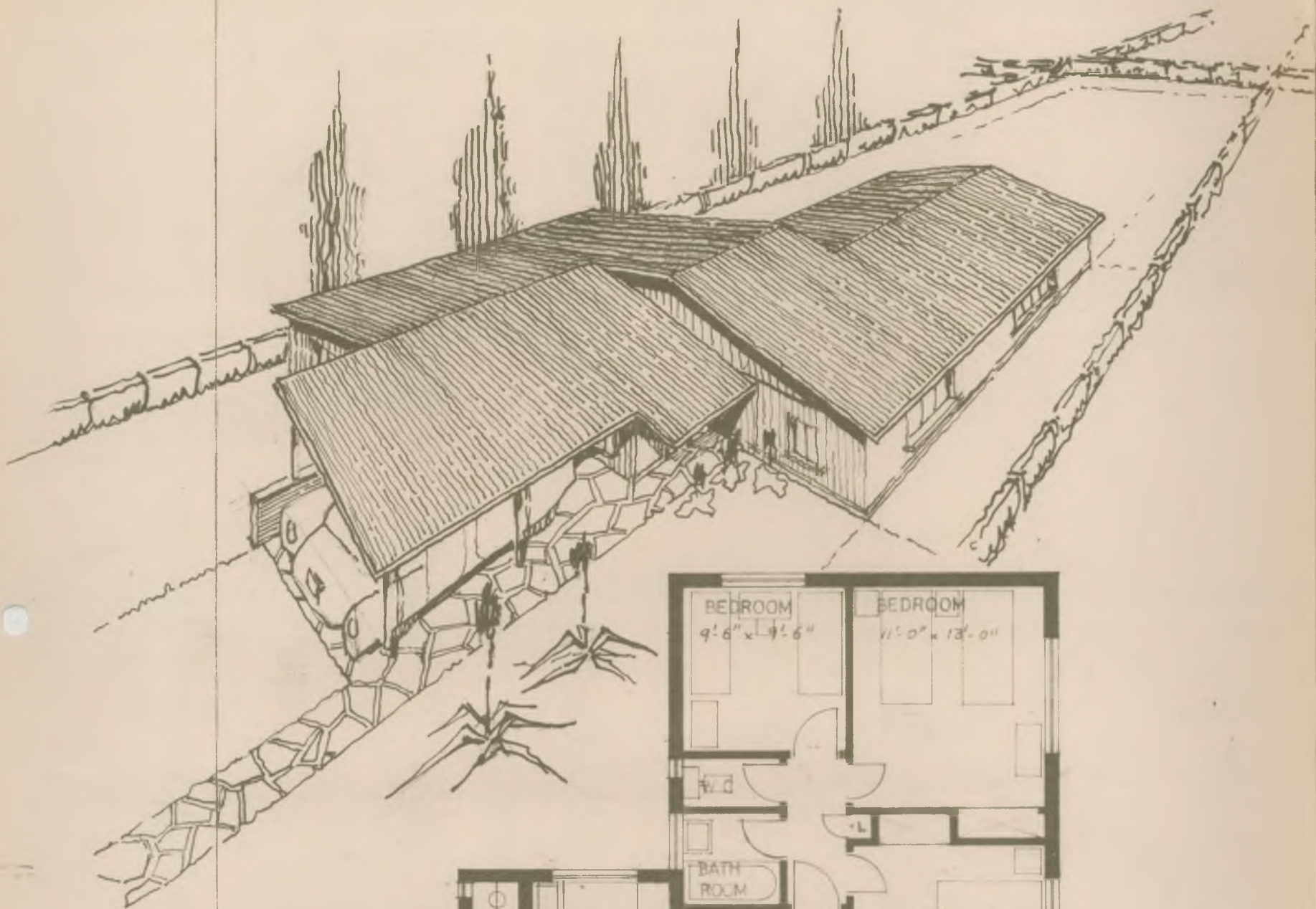
DEPARTEMENT VAN GEMEENSCHAPBOU
 DEPARTMENT OF COMMUNITY DEVELOPMENT

OPPERV. AREA WITHOUT CARPORT 984 SQ. FT. VK.VT

TYPE TYPE E.S. 9/22/66



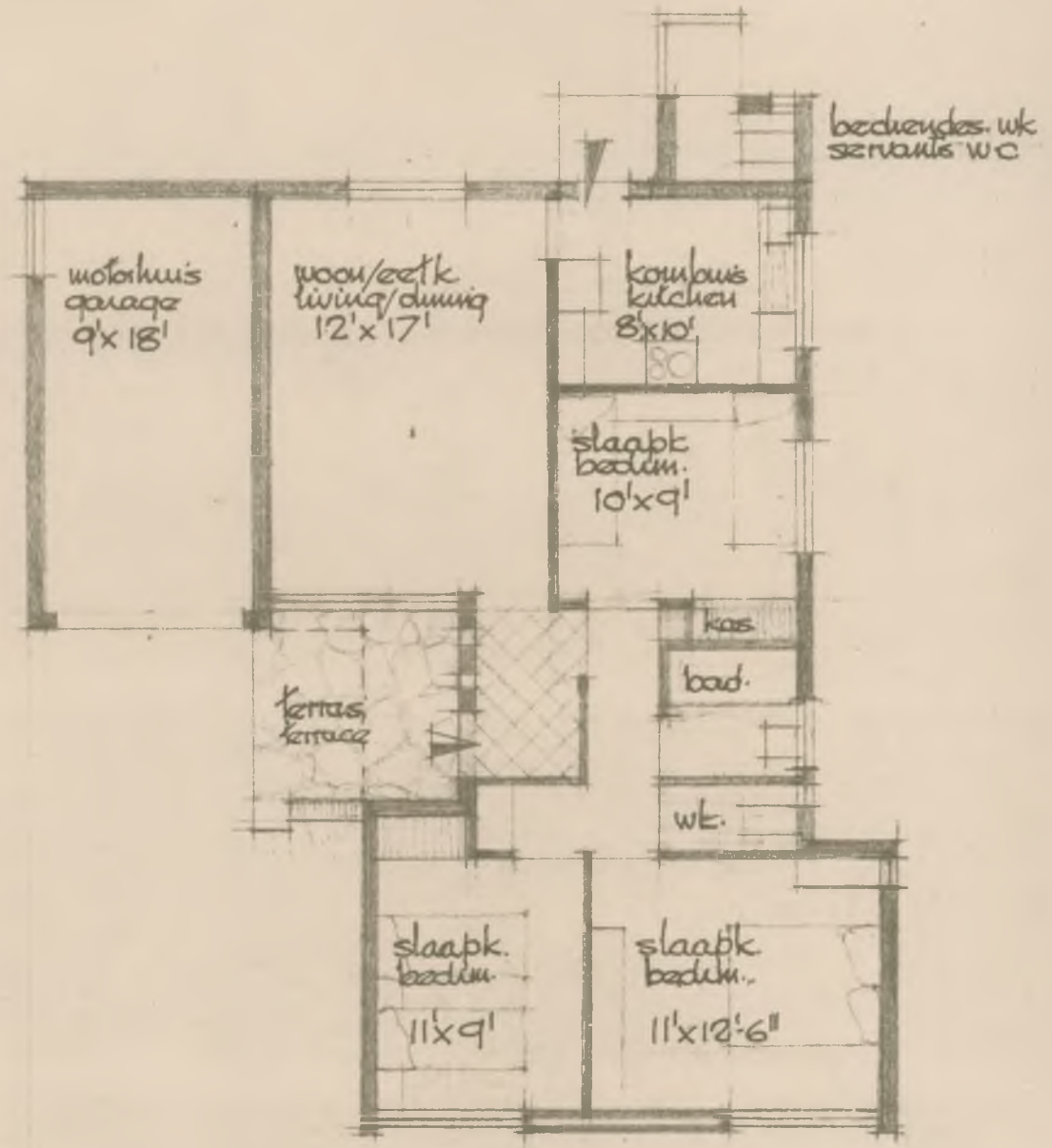
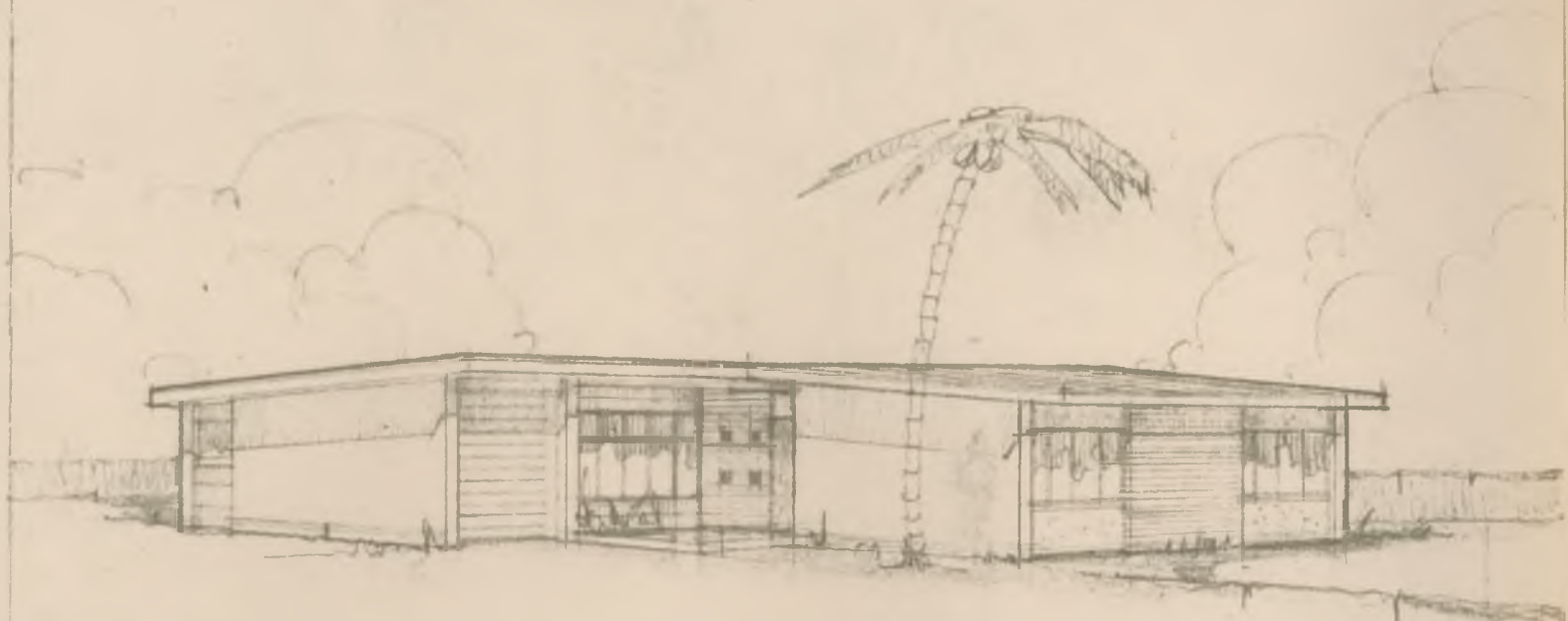
DEPARTEMENT VAN GEMEENSCHAPSBOU DEPARTMENT OF COMMUNITY DEVELOPMENT	OPPERV 983 AREA WITHOUT CARPORT	VK.VT SQ.FT	TYPE TYPE ES. 9/23/66
--	---------------------------------------	----------------	-----------------------------



DEPARTEMENT VAN GEMEENSCHAPBOU
 DEPARTMENT OF COMMUNITY DEVELOPMENT

OPPERV. AREA 998 VK.VT SQ.FT
 WITHOUT CARPORT

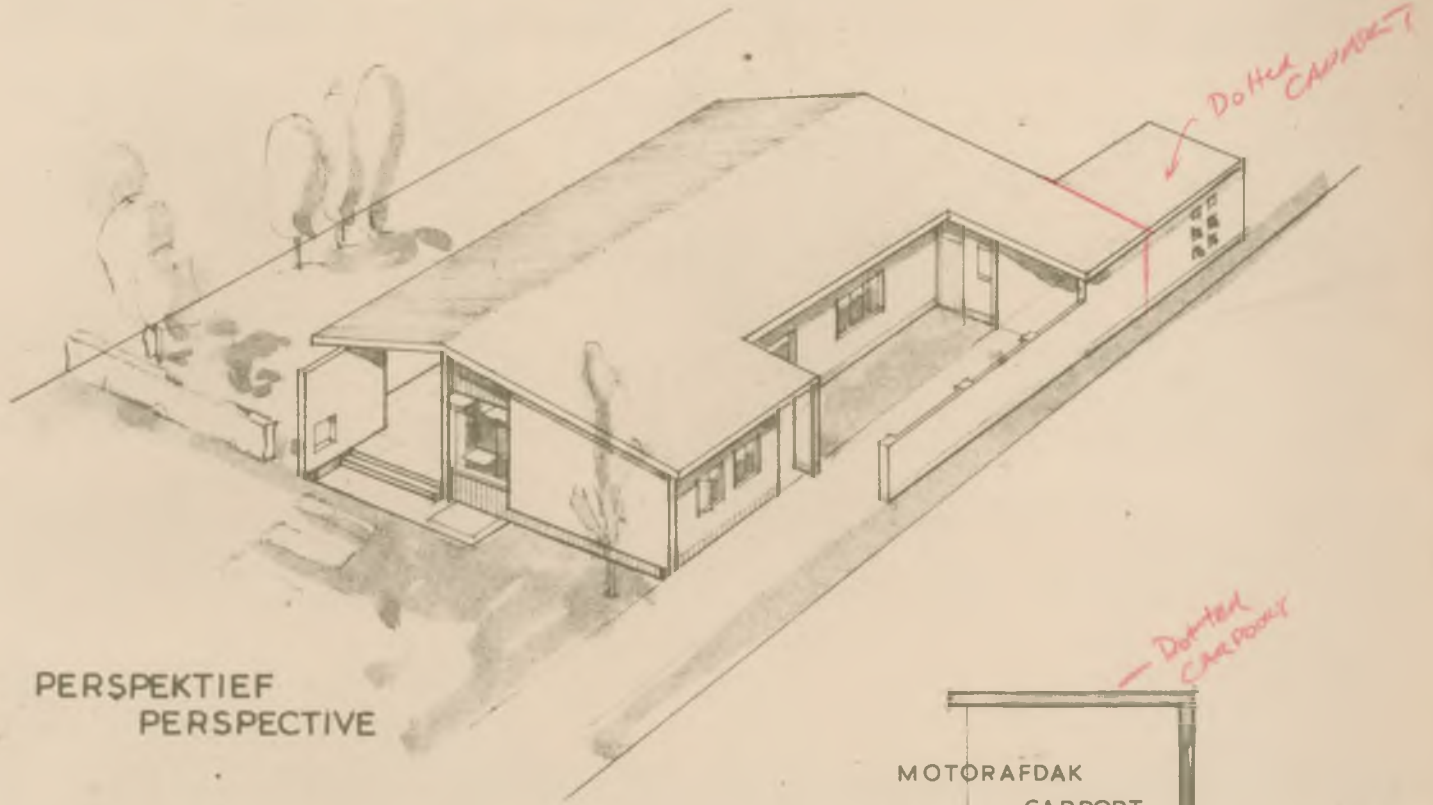
TYPE TYPE ES. 9/24/66



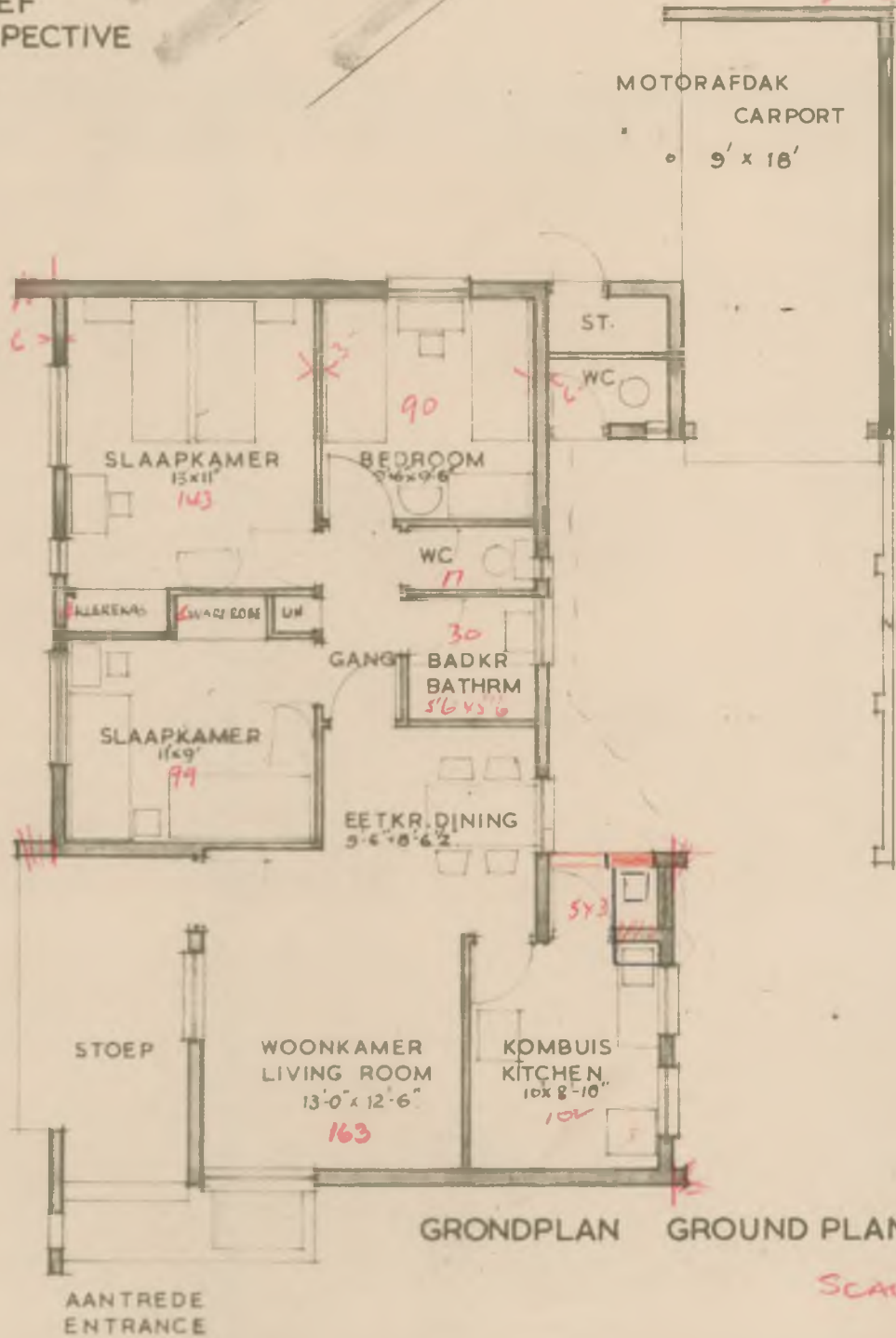
• departement van gemeenskapsbou.
 • department of community development

oppvl. • area
 940 m²
 (excluding carport)

type • ES 9/25/66



PERSPEKTIEF
PERSPECTIVE



GRONDPLAN GROUND PLAN

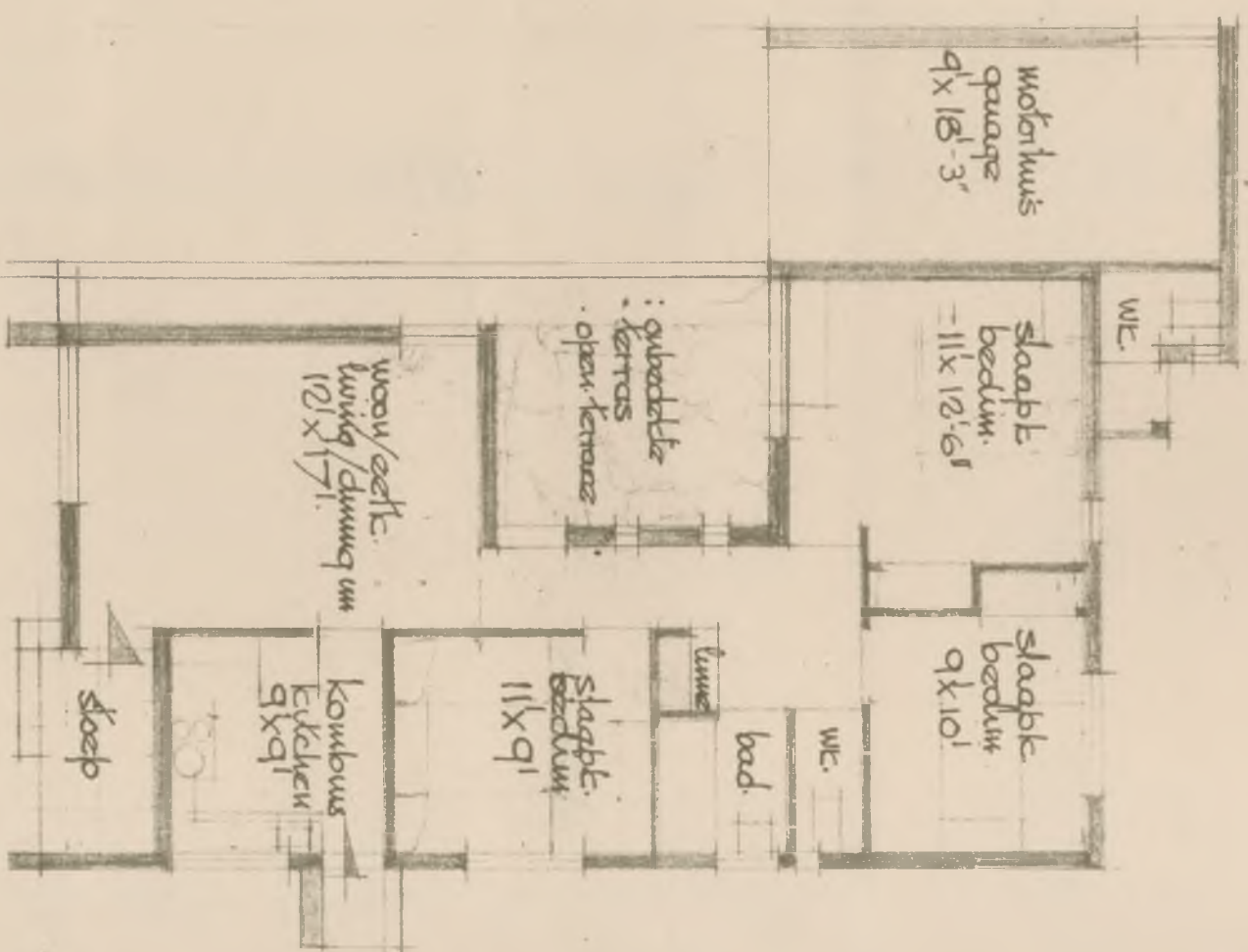
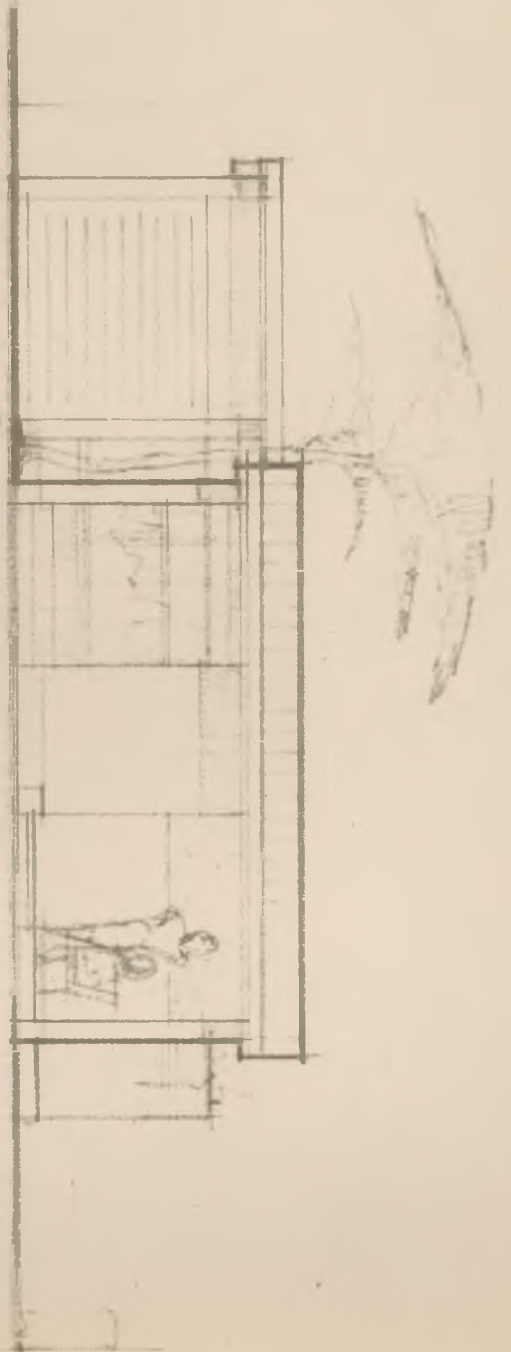
SCALE 1/8"

TYPE ES9/26/66
TYPE T4A2

DEPARTEMENT VAN GEMEENSCHAPSBOU
DEPT. OF COMMUNITY DEVELOPMENT

AREA 999 VK VT
SQ FT
AFDAK UITGESLUIT
CARPT EXCLUDED

TYPE ES9/26/66
TYPE
DEPT. *Amr*



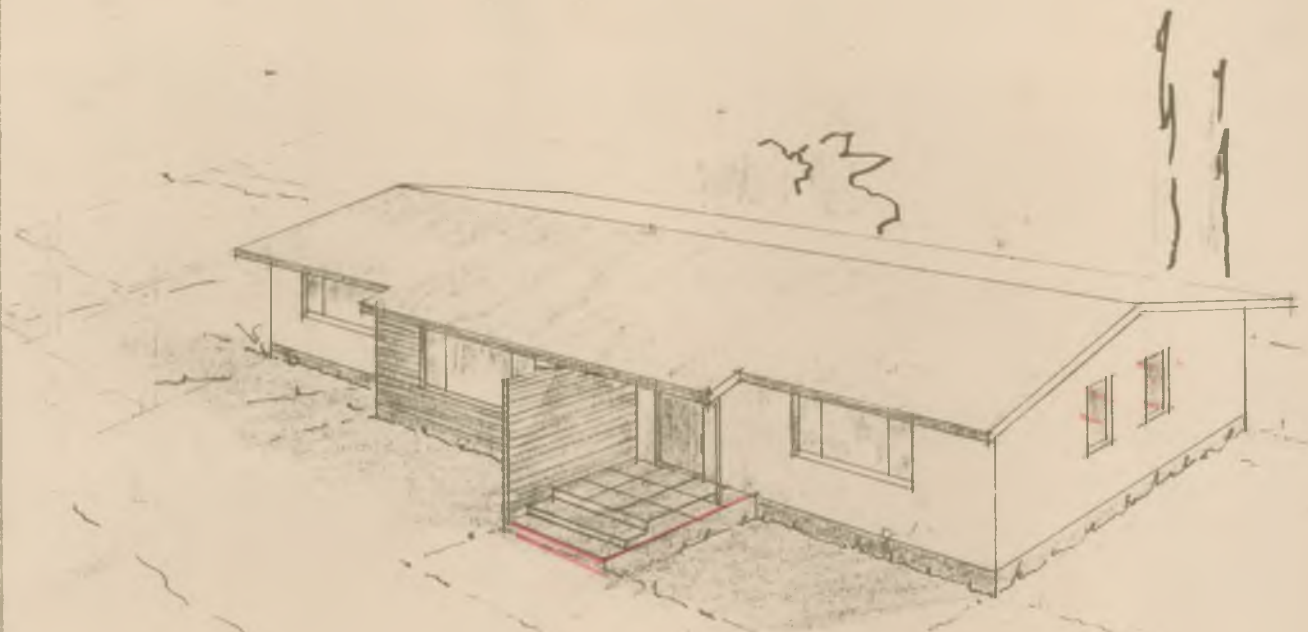
1449
 247
 1121

departement van gemeenskapsbou
 departement of community development

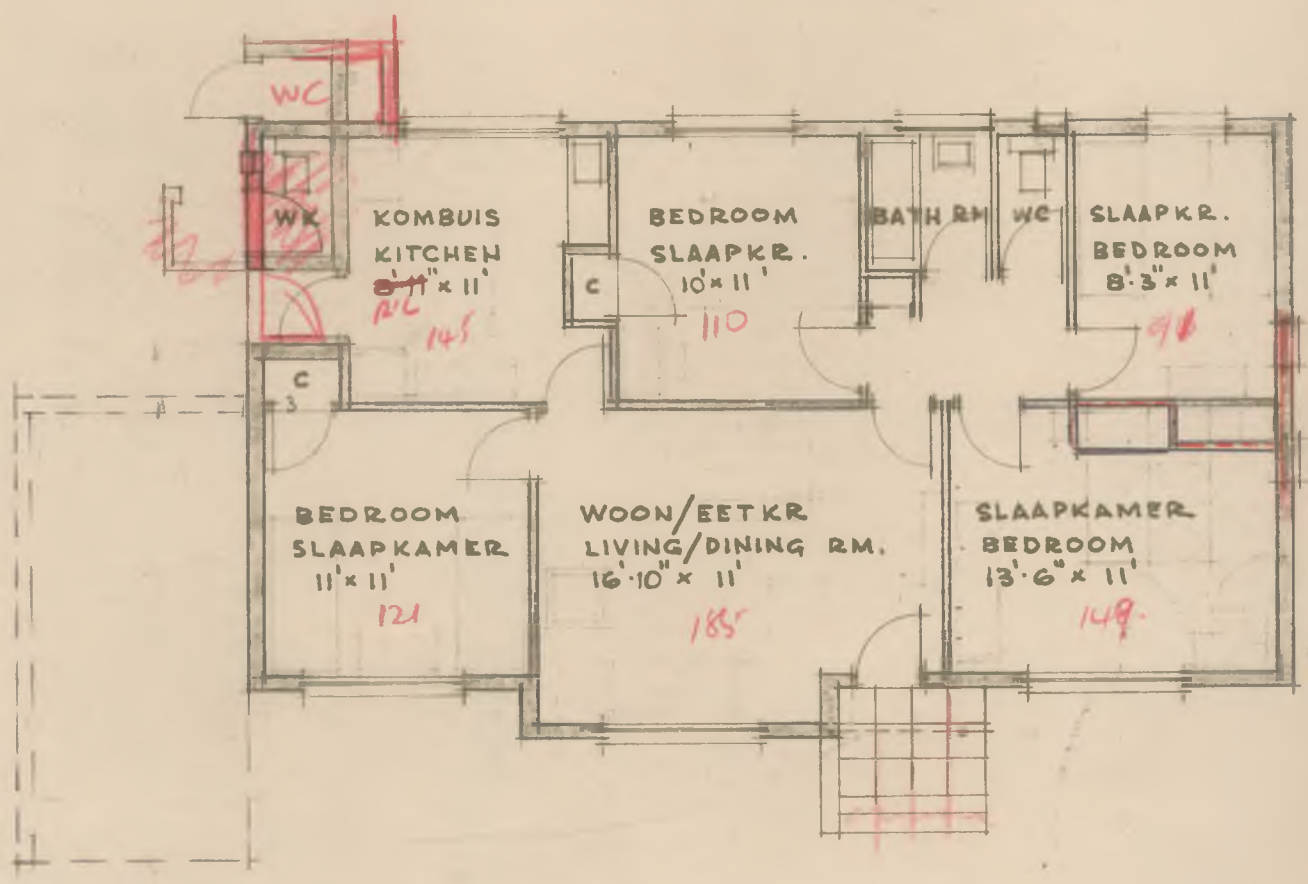
oppvl. area
 055.01
 (excl. dieng Oupst.)

tips
 type . ES 9/27/66

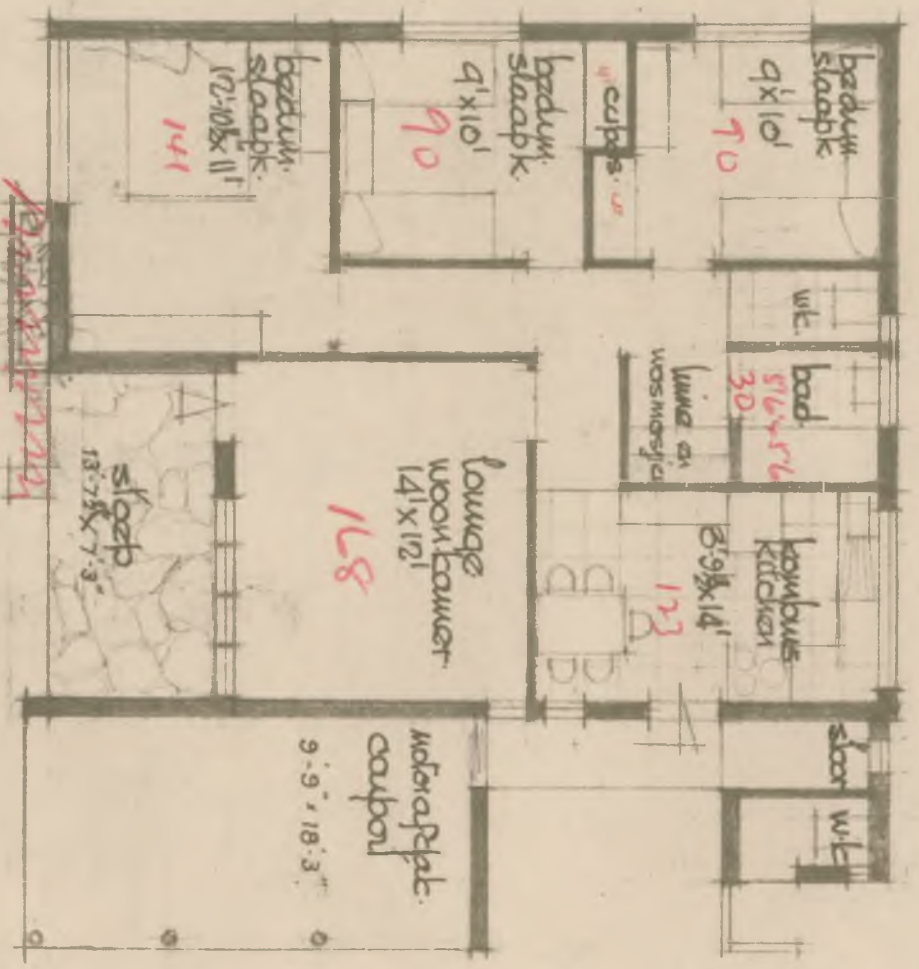
*



BIRDS EYE WIEW
VOËLPERSPEKTIEF

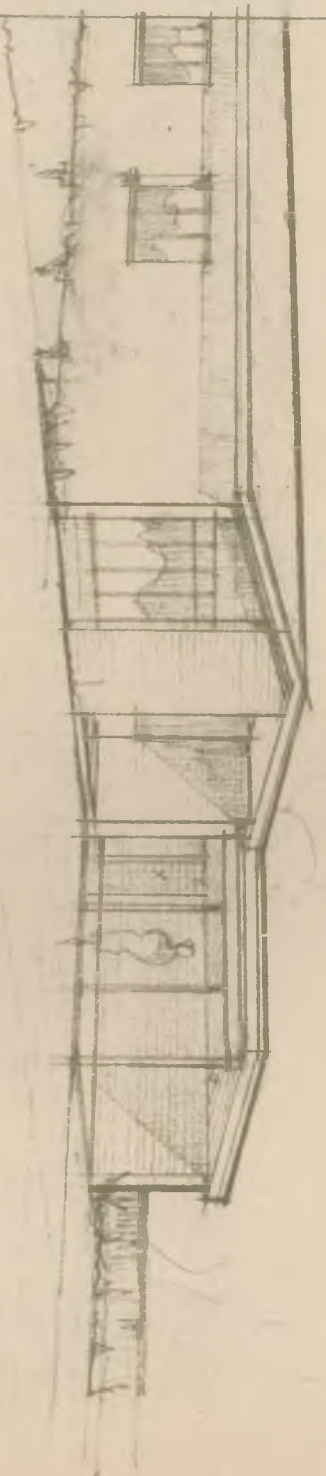


PLAN

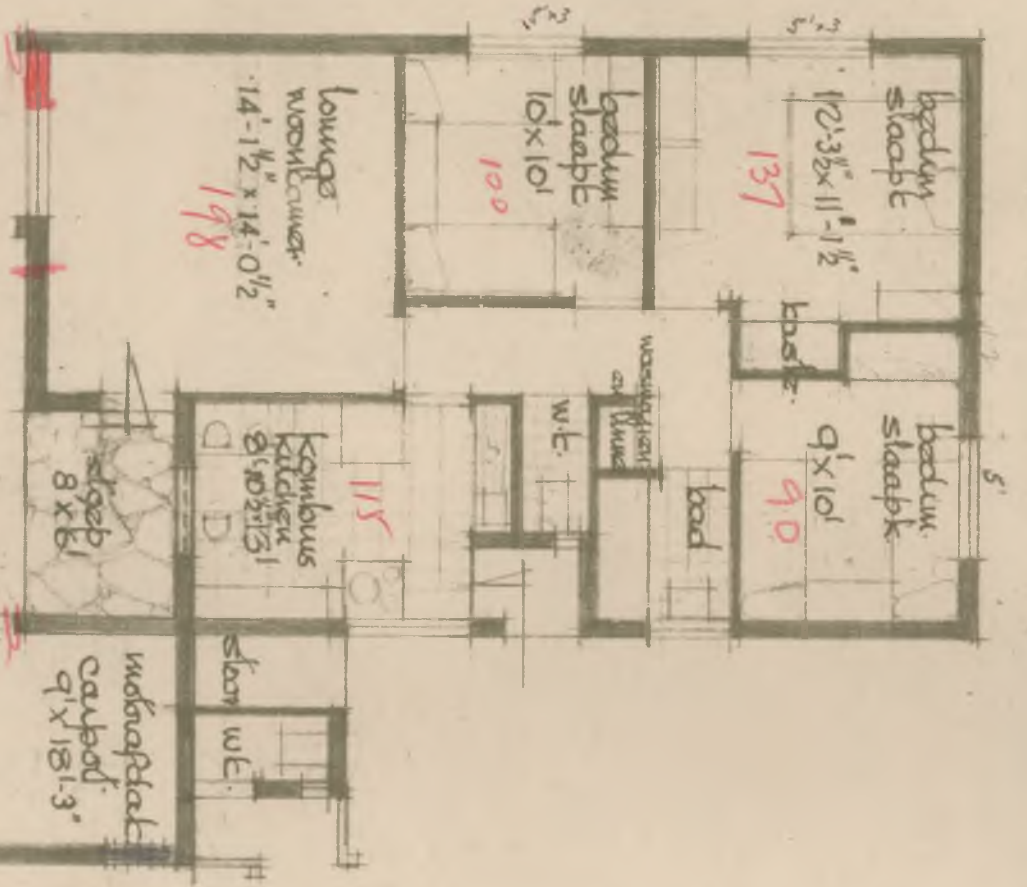


deпартамент van gewezens kafeebou opperv. area. 1053 m².
 deпартамент of community development. (indagaplat wijkswit)

type type ES 10/25/66



SEC 2



departement van gemeenskaplike
departement of community development

opperv. area • 1003 •
Grootte van die huis (wastafel)

type
type ES.10/26/66.

Collection Number: A1434

Colin Goodman Papers, 1930-1972

PUBLISHER:

Publisher:- Historical Papers Research Archive

Location:- Johannesburg

©2014

LEGAL NOTICES:

Copyright Notice: All materials on the Historical Papers website are protected by South African copyright law and may not be reproduced, distributed, transmitted, displayed, or otherwise published in any format, without the prior written permission of the copyright owner.

Disclaimer and Terms of Use: Provided that you maintain all copyright and other notices contained therein, you may download material (one machine readable copy and one print copy per page) for your personal and/or educational non-commercial use only.

People using these records relating to the archives of Historical Papers, The Library, University of the Witwatersrand, Johannesburg, are reminded that such records sometimes contain material which is uncorroborated, inaccurate, distorted or untrue. While these digital records are true facsimiles of paper documents and the information contained herein is obtained from sources believed to be accurate and reliable, Historical Papers, University of the Witwatersrand has not independently verified their content. Consequently, the University is not responsible for any errors or omissions and excludes any and all liability for any errors in or omissions from the information on the website or any related information on third party websites accessible from this website.

This document is part of a collection held at the Historical Papers Research Archive, The Library, University of the Witwatersrand, Johannesburg, South Africa.