

The House matches drew a good number of spectators and were keenly contested. Dodds House is to be congratulated on winning the House cup for 1937.

TENNI-QUOITS.

Miss C. Makubalo reports :—

There has been a marked growth of interest shown in this game by both the Junior and the Senior students. It has therefore been decided by the interested Institutions that from next year Tenni-quoits should be an open game, and no longer limited to Juniors as in the past.

One of the needs of Tenni-quoits has been partially met by putting up two seats round the courts; but these are not nearly enough, and we hope that more will be put up next year.

This has been an exciting year for the Tenni-quoits teams, for three matches were played, all against Healdtown. Two matches, external ones, were lost, and the internal match was won.

We congratulate Olga Yoyo, the Cup winner for the year.

TENNIS.

The Captain, Ethel Lekalakala, reports :—

Our Tennis this year has been very interesting and was most exciting. Many matches were played during both sessions. As a result of the great interest our girls have taken in the game, they won nearly all the matches played, in a good sporting spirit.

We are also pleased to note the great friendship that has grown between the Healdtown teams and our own. This has been largely due to the frequent matches between these schools this year, and the spirit shown.

Other matches were played against St. Matthew's, Fort Hare and our Native teachers' club the "Spes Bona" and "Springbok" clubs. These have been very interesting indeed, and the players were very keen and determined to do their best.

PATHFINDER-SCOUTS.

District Commissioner : Mr. I. Oldjohn. B.A., reports :—

In view of the new status that the Pathfinder Organisation has received it was necessary that early in the year all Path-

finders, old and new, should be enrolled under the new name of Pathfinder Scouts.

Accordingly in March this enrolment ceremony, at which thirty-five Pathfinder-Scouts were invested, was conducted by the Divisional Scout Commissioner (Rev. E. W. Grant) under the "Oaks." After this most impressive service the Pathfinder-Scouts retired to the "Hut" where they witnessed the presentation of Medals of Merit to District Commissioners C. A. Pilson and I. Oldjohn. We wish here to place on record our congratulations to our Divisional Scout Commissioner on his reward of the Order of the Silver Lion, given not only in respect of the high office which he holds in the organisation but also in recognition of his signal service to Pathfinder work.

Early in the year a small Pathfinder-Scout Committee was formed. It is due to the good suggestions and guidance of this Committee that a definite step was taken towards raising a fund for the erection of a training camp which has been so long in contemplation.

To this end the Pathfinder-Scouts of Lovedale assisted by the Old Fort Hare Pathfinders staged two successful concerts at Lovedale and Healdtown. We wish to thank all those who worked so hard to make this effort a success.

The troops at Lovedale continue to carry on strongly, but it is a matter of great regret that it has not been possible to do any work of the district. It is hoped, however, that a start will be made in the near future. During the year six won 2nd class badges, one 1st class, and four passed the Tender Foot tests. We congratulate these on their achievement.

Finally we must thank all those who have by hard work or kind gesture enabled us to go through the year happily and successfully.

WAYFARER-GUIDES.

Leader : Miss A. M. Wells.

We all worked hard the first session in order to get the bulk of patrol and badge work finished before June, and in the second session to prepare ourselves to be enrolled as Guides by the end of the year.

One Tuesday in May we tracked an interesting "spoor" laid by a very energetic "hare" up and down and around Black Hill. All the Guides followed, nobody losing the track, and finally found the elusive hare in a snug hiding place. In August we climbed up Sandile's Kop, and proved our keenness by all arriving at the top—eventually.

The Guide and Scout Sunday in Lovedale took place in September. The parade passed off very successfully, the Guides having first been inspected by their Divisional Commissioner, Mrs. Grant. During this month the Guides also took part in a meeting of the Students Christian Association, and enacted a scene round a camp fire, depicting by means of songs, spirituals and stories the comradeship and happiness of Guiding.

We brought our meeting to a close in October with a combined enrolment ceremony and picnic at the Bible School. It was a perfect afternoon, and the ceremony of enrolling the whole company was most impressive. After the ceremony Mrs. Grant spoke to the Guides. Before a supper of bread, buns, cakes, sweets and drinks, we played games on the lawns. After supper we acted charades and sang songs till 8.30 p.m. when we marched back to School tired and happy.

Miss Exley paid us a visit in November and told us about her overseas trip : crossing Africa by air, visiting England, and meeting Guides from all over the world in Sweden and at camps in Denmark.

One of our company has qualified as vice-captain and we hope will be of great help to the company, particularly next year when we start as enrolled Guides.

Group 3 won the Wayfarer Cup with the highest marks for attendance, tidiness, punctuality and smartness of uniform.

Societies and other Activities.

THE HEALTH AND SOCIAL SERVICE COMMITTEE.

Secretary : Mr. E. H. McAllister.

It was found necessary throughout the year to continue feeding many of the children of the Infant Classes of the Lovedale Primary School and also of the One-Teacher School. This was made possible by the contributions from the members of the Lovedale Staff and friends. A scale has been purchased for use in the Practising School and results of the feeding will be clearly indicated by means of systematic weighing of the children fed.

Approximately 1,500 children attending village schools in the Victoria East District, together with those from Missionary Company Schools, were entertained at Lovedale on "Gala Day," 16th October. The Gaga School is to be congratulated on winning the "Gala Sports Shield." The children were fed in the dining hall of the Boys' Boarding Department and after lunch were entertained by the Lovedale Band. With willing help from students and from members of the staff, this proved a very happy day greatly enjoyed by all the children.

The sphere of activities of the Social Service Committee has been greatly widened by its affiliation to the Cape Province Tuberculosis Council together with an increase in its membership. The Medical Superintendent and the Matron of the Victoria Hospital, Lovedale, are now members of the Committee, and through this co-operation with the Hospital the work of the Committee will be greatly strengthened and its value increased.

THE LITERARY SOCIETY.

Hon. President : The Principal.

Chairman : L. Sihlali.

Secretary : Mildred Msomi.

Although attendance was good at the beginning of the year, it was not so good even as early as April or May. This is perhaps due to the fact that most of the members of the society must write external examinations.

This society, for various reasons, is unable to tackle literary subjects. At the fortnightly meetings we usually have debates, although papers are read or addresses given by special request by members of the staff. Two such addresses were given during the year. There was a marked improvement in the standard of the debates, as compared with the previous year; this was largely due to the efforts of the Committee.

The debate with Healdtown, which had come to be regarded as an annual event, was not held this year. There was, however, a debate with Fort Hare in the Lovedale Hall; the subject being "Should the British Protectorates be incorporated in the Union?" Fort Hare took the affirmative and Lovedale the negative.

At the closing meeting, office-bearers and the committee for 1938 were elected, all being from the student body.

THE STUDENTS REPRESENTATIVE COUNCIL.

Chairman : L. A. Smith.

The report of the S.R.C. must open this year on a sad note, because during the first session our secretary, Moleko, passed away. His illness and death, and the illness of the acting-secretary greatly hampered the work of the council.

During the year the S.R.C. was responsible for the preparation and the issue of two numbers of *The Emblem*, one in the first session, the other towards the close of the second. Both were greatly appreciated.

There were the usual representations to the Heads of Departments on various matters, and several matters were referred to the Senate for consideration. The Senate was

asked to consider the anomaly of regarding those who were writing the Junior Certificate examination as eligible for attending the closing social for "Completers." The Senate considered this sympathetically, calling attention to other anomalies, and stated that it was their desire to revert to the original purpose of this closing social; for students leaving Lovedale and not returning.

The Senate was also asked to prohibit unauthorised students from performing in public as "Lovedale choirs," and the Senate agreed that no advertisement could be allowed without formal sanction of the use of this title, and suggested other ways in which its unauthorised use could be avoided.

The Senate was also approached on the question of massed singing as a means of improving the general standard.

TREE PLANTING.

Due to the severe drought experienced this year it was impossible to plant many trees. On Coronation Day however a number of trees were planted around the sports ground by members of the staff and by the senior students. The jacarandas planted on the northern side of the Oval suffered most from the drought and cold winter winds and only half the number that was planted have survived. The cypressus arizonica and sterculias planted on the east and south of the lower ground are all growing. We hope to continue planting trees around the sports ground during the coming year.

We also supplied trees to various members of the staff for hedges.

A large number of sowings were made both in autumn and spring and all the plants thus obtained are doing well. We have therefore a large number of trees in stock in the nursery.

CUTHBERT MEMORIAL LIBRARY.

Hon. Librarian : Mr. E. N. Brown.

Asst. Librarian : Mr. R. Senyama.

Student Section.

The figures for 1937 are encouraging from every point of view. The number of books taken out by students has risen

from 3,363 in 1936 to 3,895 in 1937. Nor is this increase due to the Practising School, which has not officially used the Library this year. The High School students have read 657 more books than last year, and the Training School students 478 more. One Training School student is credited with 34 books in four months!

During 1937, 265 volumes were added to this section, as compared with 147 in 1936.

General Section.

The number of volumes issued during 1937 was 1369. Of these 938 were fiction (an increase of 254) and 431 non-fiction (an increase of 95). The number of volumes purchased during the year was 56: 35 fiction, and 21 non-fiction.

At the beginning of the year the credit balance was £3-1-9, but this was reduced to £1-15-11 when the balance owing on books for 1936 was paid. The cash in hand is now £1-16-2.

The Assistant Librarian continues to fulfil his duties to the satisfaction of all except those who keep books out too long.

LOVEDALE FORMER STUDENTS' ASSOCIATION.

Hon. Sec. Miss M. Shingler.

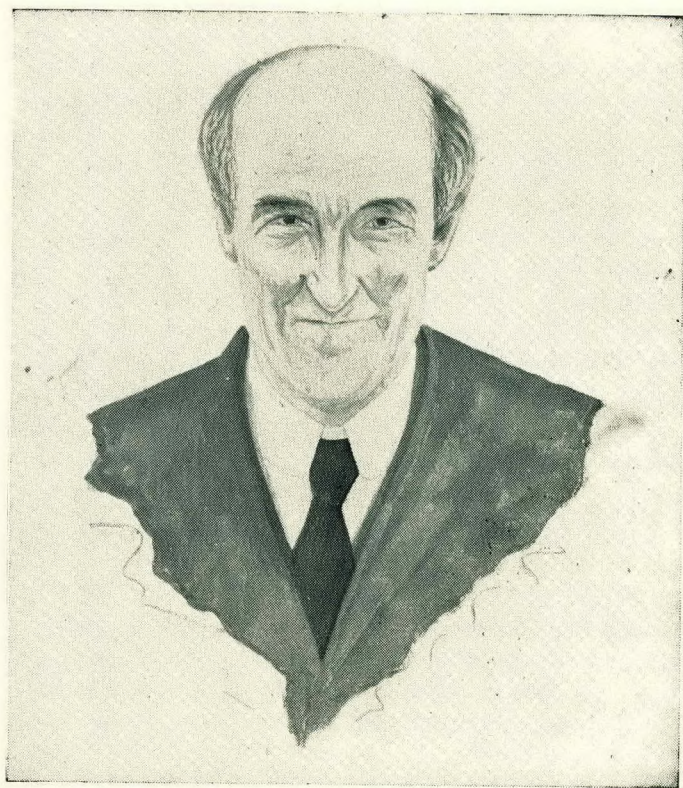
This is the fourth year of the Lovedale Former Students' Association's existence. The membership now stands at 95 of whom 54 are Life members and 41 are Annual members. Considering the thousands of former students, the membership is meagre, and further efforts must be made to attract new members.

The present members are enthusiastic and the annual Reunion held at Lovedale from 25th to 27th September, 1937, was an exceptionally happy one. The week-end was crowded with social and sporting events and at the general meeting much of interest was discussed. The Sunday Services, with the Pathfinder and Wayfarer Parade in the morning, are amongst the cherished memories.

The Reunion is more than a social gathering in that it binds the ties between past and present in their mutual home. These former students are ambassadors of Lovedale in their own spheres, and many have proved their practical affection by

collecting for the Lovedale Appeal Fund. An amount of £72-0-6 has been contributed by former students.

With the growth of the Association it is hoped that its usefulness to Old Lovedalians and to the Institution will be of great value.



Dr. Neil Macvicar
A Sketch by G. M. Pemba when a Lovedale student

The Victoria Hospital.

The Victoria Hospital is a general hospital for Natives only. It is a mission hospital, a branch of the Lovedale Mission of the Church of Scotland.

During the year under review, 1624 sick or injured persons received treatment as inpatients (135 in hospital on 1st January and 1489 admitted during the year) and 5690 as outpatients. These figures show a large increase upon last year (in 1936, inpatients, 1,164, outpatients, 3,441).

MALNUTRITION THE OUTSTANDING FEATURE.

The outstanding feature of the year has been the prevalence of malnutrition among the people. Actual starvation—in our experience the cardinal signs of starvation are emaciation and ravenousness, unaccounted for by disease—was seen in some patients, especially old men and children, but much more common were food deficiency diseases brought on by the absence of such essential foods as milk and vegetables. The people were living almost entirely upon maize, bought at the stores.*

EVIDENCE FROM THE OUTPATIENT DEPARTMENT.

In response to an official enquiry, the notes made on outpatient cases for one month (September) were gone over and it was found that in that month nine male adults, fifty-six female adults and sixty-eight children had been given treatment for scurvy or other food deficiency diseases. This made a total of 133 cases of recognized malnutrition in one month (out of 554 cases seen that month). The small number of men is accounted for by the absence of most of the men at the mines or other labour centres.

*This district was proclaimed "a drought-stricken area", which automatically reduced the price of maize bought by farmers for fattening stock to 8/6d. a bag. Natives, however, and other poor people, had still to pay from 16/- to 17/6d. a bag, cash down.

EVIDENCE FROM THE INPATIENT RETURNS.

There were 117 admissions of patients suffering primarily from malnutrition. As might be expected from a consideration of the outpatient figures just referred to, many inpatients appearing in other categories were noted as suffering also from malnutrition.

There were nine deaths from malnutrition alone.* There were nine others in which malnutrition was a major contributory factor, that is was sufficiently serious to be certified as one of the causes of death.

SERIOUS LOWERING OF RESISTANCE TO RESPIRATORY DISEASE.

The weather throughout the winter was seasonable, neither specially wet nor cold, yet an epidemic of influenza of a quite mild type as judged by its comparatively slight effects upon most White patients—had results that can only be described as devastating upon the ill-nourished Natives. In the influenza-bronchitis-pneumonia group there were 260 admissions and thirty-two deaths. (A few of these cases and four of the deaths were associated with whooping cough or measles, not influenza. In these cases equally there were signs of malnutrition and consequent lack of resistance).

MAIZE AS SOLE FOOD.

As a basal diet maize has excellent qualities. It supplies energy and heat and contributes to a certain extent to growth. But no person can maintain health on a diet of maize alone. It must be supplemented.

Health is lost, the power to work is lost, and in the end life itself is lost, if suitable additions are not made to this basal diet and made regularly and in sufficient amounts. Those patients who died in the hospital of scurvy had been living upon maize.

*One was certified by us as due to "starvation" but the certificate was returned from the Registrar's Office with the request that the cause of death should be more precisely stated. Starvation, it would appear, does not officially exist.

COUNTRY PEOPLE DEPEND MAINLY UPON WAGES.

The position is that in any season the Ciskei country Natives are largely dependent, and in a bad season they are entirely dependent, upon remittances from their men (or women) working in towns or mines, or upon local wages. If these money resources are not large enough to enable the people to buy the necessary supplementary foods, they go down in health. It is not enough to have work; the wage must not be so small that the food purchasing power of the worker is practically limited to maize. And it is not enough to dole out maize on credit to specially necessitous families to save them from starvation. This may save them from actual starvation but it will not save them from the diseases that debilitate and destroy people who are living upon maize alone.

STATE ACTION FORCING UP THE PRICE OF MAIZE.

Maize, however, remains the essential basis of the peoples' diet, and the action of the Maize Control Board in forcing up so enormously the price of this staple and only cheap food of the poorest people during a time of drought has been a scandalous misuse of power.

THE TRAINING OF NATIVE NURSES.

During the year 1937 the hospital sent in twenty-two nurses for the Medical Council's examinations, six for the Final Trained Nurses examination and sixteen for the junior Anatomy, Physiology and First Aid examination. All were successful and two of the juniors passed in the Honours list.

THE SOUTH AFRICAN HEALTH SOCIETY.

The Society held its Annual Meeting in May. The Lovedale Assembly Hall was well filled with members and students of Fort Hare and Lovedale. The President for the year, Sir Edward Thornton, Secretary for Public Health and Chief Medical Officer of the Union, delivered an

address describing the constitution, work and policy of the Public Health Department. The Department's plans for sub-economic housing, in which Native location dwellers will share, were explained, also the campaign against tuberculosis which the Government is taking in hand.

The honour done to the Society by Sir Edward Thornton's acceptance of the Presidency and the trouble taken by him in preparing and coming in person to deliver this important address have been much appreciated. The address was published in full in three languages (English, SiXhosa and SeSotho) in the Society's Magazine and had a wide distribution throughout South Africa.

CHANGES IN STAFF.

At the end of May, after seven years' work as Assistant Medical Officer, Dr. Richard Ross resigned to take up work in Johannesburg. Dr. Shena Ross continued her duties till the end of the year and then resigned the position of Surgeon to the Hospital, having completed ten years service.

At the close of the year the retirement took place also of Dr. Neil Macvicar, for thirty-five years Medical Superintendent of the Hospital.

The Victoria Hospital begins the New Year with a new medical staff: Dr. A. F. Grattan Guinness, Medical Superintendent, Dr. Dorothy Ryan, Physician, and Dr. W. C. J. Cooper, Surgeon.

THE FUTURE.

A hospital of ninety beds for pulmonary tuberculosis in Natives is about to be erected by the Union Government on a site adjoining that of the Victoria Hospital. The two hospitals are to be under the management of the Lovedale Hospital Board, with medical and nursing staffs in common.

A preliminary nurses' training school is shortly to be erected beside the hospital, in which applicants will



The Practising School

receive six months' preparatory training and their capacity will be tested. Those who prove suitable will be admitted to the hospital for training as nurses.

At the request of the Union Government and in collaboration with the South African Native College, the Victoria Hospital has undertaken to give systematic and clinical instruction to the Medical Aid students of the College. A beginning was made in 1937 and full courses will be undertaken in 1938.

There is now a good prospect that a Native nurse, fully qualified in General Nursing and Midwifery, will be appointed as Visiting Nurse to the Division of Victoria East.

THE MISSIONARY CHARACTER OF THE HOSPITAL.

The missionary character of the Hospital derives from its origin in a Missionary Institution. It is the main-spring of its success. Character training is the backbone of the nursing course, and it has been the task and privilege of the Hospital to turn out good nurses who are at the same time good women, conscientious as well as skilful, liberated in mind from superstitious ideas of disease and armed in soul to fight for and with their people against the evils that degrade their personal and community life.

Heathen people, who at first were afraid to enter hospital, are now coming in increasing numbers. The opportunities of spiritual service are greater than ever before and the new developments will increase these opportunities in the years to come.

Lovedale Bible School.

Head of Bible School : Rev. E. W. Grant.

The year has been one of sustained progress and of extension in many directions of the work and influence of the School.

Courses at Headquarters.

Thirteen students, of three Churches, passed through the long Course of Training in Evangelism in the early part of the year. A new development was the provision of a Second Year's Course for four of these students. Men came from three Provinces and represented five home languages. The Course was a very concentrated one, continuing for a practically unbroken period of twenty weeks. But without exception the men applied themselves keenly to study, and the spirit of fellowship was marked. Exceptionally good practical work was done in the villages, no less than eight centres being regularly visited. A most interesting new venture, and one we hope to develop further, was the close co-operation between the Bible School and the Victoria Hospital in clinical work. This was carried on in three needy centres, our students caring for the spiritual needs of those who received the healing ministrations of the sisters and nurses. The experiment proved how successful can be the combination of evangelistic with medical work.

During the Spring vacation a group of *Day School Teachers* spent some days at the Bible School. A specially prepared course had as its aim the raising of the standard of Religious Instruction in Day Schools. We are keeping in touch with these and other interested teachers by means of occasional circulars. At the request of those present it is proposed to lengthen the Course for next year and to include Sunday School teachers.

Our second Course for *Wives of African Ministers* brought together an interesting group of eighteen women for eight days later in the year. In addition to help in Bible Class and Sunday School teaching, the women received most valuable

training in Infant Welfare and Health matters, and in Domestic Science and Home-making, which will equip them for much useful service in locations and villages. For these special lectures and demonstrations we owe a debt of gratitude to members of the staffs of the Victoria Hospital and of Lovedale Institution.

Field Work.

Some thousands of miles were covered in extensive tours during which Courses varying in length and character were held at the following centres: Dordrecht, Kamastone, Cunningham, Ncambele, Capetown, Mafube, Bethesda, and Grahamstown. The Courses were held under the auspices of the Dutch Reformed, Methodist, Presbyterian and Moravian Missions. In many cases other Churches shared in facilities provided for the training of Evangelists, Lay Preachers and Sunday School Teachers. In addition to these centres, shorter visits were paid to other Mission Stations and Training Institutions for gatherings of various kinds. The year closes with the Bantu National Sunday School Convention in Johannesburg, the Head of the Bible School having accepted an invitation to be the Chairman of that Convention.

Publications.

The monthly *Preacher's Help*, issued in two languages, reached during the year its highest circulation figure of nearly eleven hundred.

The first volume of a new Xhosa series, *Isikokelo Sabashumayeli Nabafundi Bezibalo* (Guide for Preachers and Bible Students), a book of 150 pages, was published during the year by the Lovedale Press, and has been well received. There are requests for a second volume which we hope to complete in 1938.

In co-operation with a member of the staff of Healdtown Institution we have prepared for Publication by the Methodist Church a new and comprehensive *Syllabus of Religious Instruction* for Primary and Secondary Schools, and Training Institutions. In response to requests which have been received the syllabus is made available for use by other Missions,

Extensions.

A further generous gift from overseas has made possible the appointment of an ordained African Tutor to the staff of the Bible School. The Rev. James J. R. Jolobe, B.A., has accepted the post. He will assume duty in January 1938. The same munificent donor has made possible the erection of a house for Mr. Jolobe and a much needed additional lecture room in the School building (both now completed); also, a suitable and beautiful Chapel which will be opened early in the New Year.

General.

It is interesting to note that the School is beginning to attract members of the Coloured Community. We held a most promising three days' Course with a group of forty Coloured teachers at Salt River Training College, Cape Town. Other Coloured teachers joined in our Vacation Course at the Bible School. A Coloured Evangelist attended our Training Course in Evangelism and will return in 1938 for a second year. Several other Coloured students have applied for places in the 1938 Course. We welcome this new and promising development.

Our Board of Management, on which ten Churches and Missions are represented, has met twice during the year.

The Congregation.

Minister of Congregation : Rev. R. H. W. Shepherd, M.A.

From 10th April till 14th September, during the major portion of Dr. Wilkie's furlough, the oversight of the Congregation was undertaken by Rev. R. L. Kilgour, M.A., minister of Elie, Fife, Scotland. The effectiveness of Mr. Kilgour's service may be judged by the following minute passed by the Governing Council on 11th November :

" The Lovedale Governing Council unites with the Kirk Session and the Deacons Court of the Congregation in recording gratitude to the Kirk Session of Elie Congregation for permitting its minister, Rev. R. L. Kilgour, to spend seven months away from Scotland during the present year so that he might act as Chaplain in Lovedale (during the leave of the Principal). It also records its deep appreciation of the service Mr. Kilgour rendered. By his pulpit ministrations, his close and friendly contact with staff, students and apprentices, his wise judgment in matters affecting the life of the Congregation and his devotion to the interests of the Institution as a whole, he endeared himself to all. The Governing Council rejoices in the new link thus formed with a minister from Scotland, his congregation and his church overseas, and asks Mr. Kilgour to accept its affectionate gratitude for a notable piece of service."

The usual activities of the congregation, Sunday services, Bible classes and Staff Prayer Meeting, were maintained throughout the year. As always, a very valuable auxiliary was the Students' Christian Association whose numerous branches provided opportunities for service by the students.

During 1936 the following were ordained as elders, namely: Messrs. W. L. Geddes, M. L. Kabane, I. Oldjohn, A. D. MacNab and J. Zim, and early in 1937 there were elected as deacons Misses E. M. Grieve and J. L. Rogers and Messrs. N.

P. Hela, J. Mohapelo and H. J. Rousseau. The inclusion for the first time in the history of Lovedale of ladies in the Deacons Court has been generally welcomed and has added to the efficiency of the Court.

A special word of thanks is due to over twenty members of the staff who, week by week, teach in the Bible Classes. It is noteworthy that after a busy week so many are prepared to set aside a portion of Sunday morning for this service.

Staff and Statistics.

LOVEDALE GOVERNING COUNCIL,

1937

Chairman : Rev. Arthur W. Wilkie, C.B.E., D.D.

Vice-Chairman : Senator The Hon. W. T. Welsh.

Secretary : Mr. D. A. Hunter, F.R.S.G.S. (retired November).

„ Rev. R. H. W. Shepherd, M.A.

Members ex-officio.

Rev. Arthur W. Wilkie, C.B.E., D.D.	Principal.
Mr. C. A. Pilson, B.Sc.	Head of High School.
Mr. J. W. Macquarrie, B.A.	Head of Training School.
Mr. M. L. Kabane, B.A.	Head of Practising School.
Rev. R. H. W. Shepherd, M.A.	Minister of Congregation.
Miss E. M. Grieve, B.Sc.	Superintendent, Girls' School.
Miss J. L. Rogers	Vice-Superintendent, Girls' School.
Dr. N. Macvicar, M.D., C.M., D.P.H.	Medical Superintendent, Hospital.
Major W. L. Geddes, O.B.E.	Boarding Master.
Mr. W. A. Smith	Representing Industrial Depts.
Mr. G. McGillivray	Head of General Office.
Rev. E. W. Grant	Head of Bible School.

Elected by Governing Council (2 years).

Miss H. M. Parker	1936, 1937.
Mr. C. D. Zulu	1937, 1938.

Appointed by Mission Council (3 years.)

Rev. R. Godfrey, M.A.	King William's Town, 1937-1939
Rev. J. Lennox, O.B.E., D.D.	Johannesburg „
Rev. D. W. Semple, M.A.	Cunningham. „

Appointed by Bantu Presbyterian Church (3 years)

Rev. Y. Mbali	Gillespie. 1935-1937
---------------	----------------------

Appointed by Governor-General-in-Council (5 years.)

Mr. A. L. Barrett	Chief Native Commissioner, Ciskei, 1936-1941
Mr. R. Fyfe King	Chief Native Commissioner, Transkei, 1937-1941

**Appointed by Superintendent-General of Education,
Cape Province (5 years)**

Mr. G. H. Welsh, B.A.	Chief Inspector of Native Education, C.P.	1937-1941
Mr. K. A. Hobart Houghton, M.A.	Circuit Inspector, Victoria East,	1937-1941

Nominated by Executive (5 years.)

Mr. W. G. Bennie, B.A.	Late Chief Inspector, Native Education, C.P.	1937-1941
Sister Frances Mary, C.R.	Head of Grahamstown Training College	"
Dr. A. Kerr, M.A., LL.D.	Principal, S.A. Native College	"
Mr. F. A. W. Lucas, K.C.	Johannesburg	"
Mr. W. Webber	"	"
Senator W. T. Welsh	East London	"

Appointed by Executive, representing Past Students (3 years.)

Mr. T. Makiwane	Umtata	1935-1937
Dr. R. T. Bokwe, M.B., Ch.B.	Middledrift	1936-1938

Appointed by Governing Council.

Mr. D. A. Hunter	Secretary.
------------------	------------

THE SENATE

1937

Members ex-officio.

Rev. A. W. Wilkie, C.B.E., D.D.	Principal (and Chairman.)
Mr. C. A. Pilson, B.Sc.	Head of High School.
Mr. J. W. Macquarrie, B.A.	Head of Training School.
Mr. M. L. Kabane, B.A.	Head of Practising School.
Miss E. M. Grieve, B.Sc.	Superintendent, Girls' School.
Miss J. L. Rogers	Vice-Superintendent, Girls' School.
Rev. R. H. W. Shepherd, M.A.	Minister of Congregation.
Rev. R. L. Kilgour, M.A.	Acting Minister (April to Sept).
Major W. L. Geddes, O.B.E.	Boarding Master.

Elected by Heads of Industrial Departments.

Mr. T. Atkinson	Printing Department.
Mr. W. A. Smith	Building Department.

Elected by all Heads of Departments, Teachers & Instructors.

Mr. J. Benyon, B.A.	High School
Miss E. Henderson, B.A.	" "
*Mr. B. W. Lloyd, M.A.	Training School
Mr. G. McGillivray	General Office
Mr. I. Oldjohn, B.A.	High School
Miss H. M. Parker	Training School
Miss C. Roberts	Training School
Mr. C. D. Zulu	General Office

Secretary.

Miss H. M. Parker.

STAFF 1937.

<i>Principal :</i>	Rev. Arthur W. Wilkie, C.B.E., D.D. (on leave, 17 March to 20 Oct).
<i>Minister of Congregation :</i>	Rev. R. H. W. Shepherd, M.A.
<i>Boarding Master :</i>	Major W. L. Geddes, O.B.E.
<i>Boarding Mistress :</i>	Mrs. Geddes.
<i>Superintendent, Girls' School :</i>	Miss E. M. Grieve, B.Sc.
<i>Vice-Superintendent, Girls' School :</i>	Miss J. L. Rogers.
<i>Acting-Principal :</i>	†Rev. R. H. W. Shepherd, M.A. (17 Mar. to 20 Oct.).
<i>Acting-Minister of Congregation :</i>	†Rev. R. L. Kilgour, M.A. (10 Apr. to 14 Sept).

HIGH SCHOOL.

<i>Principal :</i>	Mr. C. A. Pilson, B.Sc.
Mr. C. J. Barry, B.A.	Miss E. H. C. Henderson, B.A.
Mr. J. Benyon, B.A.	Miss C. Nikani, B.A.
Mr. E. N. Brown, B.Sc.	
Mr. P. Gilowey, B.Sc.	
Mr. F. P. Joshua, B.Sc.	
Mr. E. H. McAllister	
Mr. M. Moerane	
Mr. I. Oldjohn, B.A.	

TRAINING SCHOOL.

<i>Principal :</i>	Mr. J. W. Macquarrie, B.A.
Mr. D. Coghill, M.A.	Miss M. A. Giles
Mr. W. W. Duncan (Technical).	*Miss J. Greer, B.A.
Mr. H. Duncan (Ass. Technical).	(to 30 Sept).
*Mr. B. W. Lloyd, M.A. (to 31 Mar).	Miss H. M. Parker
Mr. B. Mdledle (on leave, Apr. to Dec).	

†Temporary Appointments.

*Resigned during year.

Printing & Bookbinding :

<i>Works Manager :</i>	Mr. T. Atkinson	
<i>Bookbinding Instructor :</i>	Mr. R. White	
<i>Foreman :</i>	Mr. S. Kayser.	
<i>Journeyemen :</i>	Mr. R. J. Franks	Mr. B. Nthanyana
	„ J. C. Kawa	„ J. Schalkwyk
	„ G. Mali	„ J. Sidiyo
	„ A. Mei	„ R. Tshaka
	„ P. Mlangeni	„ J. Zim
		„ S. Zondani.

The Bookstore and Publishing :

<i>Manager :</i>	Mr. A. D. McNab.	
<i>Assistants :</i>	Miss M. Harber	Mr. J. Sani.
	Miss G. Terwin	

The Caravan :

<i>Colporteur :</i>	Mr. A. W. Gush.
---------------------	-----------------

THE DAIRY FARM.

<i>Manager :</i>	Mr. D. Emslie
<i>Assistant :</i>	Mr. G. Coetzer.

THE CUTHBERT LIBRARY.

<i>Hon. Librarian :</i>	Mr. E. N. Brown, B.Sc.
<i>Assist. Librarian :</i>	Mr. R. Senyama.

POST AND TELEGRAPH OFFICE.

<i>Postmaster :</i>	Mr. J. van Niekerk.
---------------------	---------------------

BOARDING DEPARTMENTS.

<i>Assistant :</i>	<i>Boys' Department :</i>	Vacant
„	<i>Girls' Department :</i>	Miss A. Vuba.

THE GENERAL OFFICE.

<i>Accountant :</i>	Mr. G. McGillivray
<i>Principal's Secretary :</i>	Miss M. Shingler
<i>Assistants :</i>	Mr. A. Dana
	Mr. C. D. Zulu.

AUDITOR.

Mr. J. W. Williamson, C.A.

LOVEDALE BIBLE SCHOOL.

Head of School : Rev. E. W. Grant.
Boarding Master : Mr. Samson Mzangwe.

STAFF CHANGES : 1937.

(1) Appointments at beginning of year.

Mr. C. J. Barry, B.A., High School.
Mr. D. Coghill, M.A., Training School (from High School).
Mr. H. Duncan, Assistant Technical.
Mr. F. P. Joshua, B.Sc., High School
Mr. E. H. McAllister, " "
†Miss A. Gray, Hospital (to 31 Aug.)
†Mrs. Mosese, Practising School (to June).

(2) Appointments during year.

Miss A. Cooper, R.N., C.M., Hospital, (from 24 Oct.)
Mr. W. C. J. Cooper, M.B., Ch.B., F.R.C.S., Hospital (from
15 Dec.)
Miss A. Majiza, Hospital (1 Oct.)
Mrs. Ryan, M.R.C.S., L.R.C.P. Hospital (1 Aug.)
Miss S. Nikani, Practising School (12 July.)

(3) Temporary Appointments during year.

Rev. R. H. W. Shepherd, M.A., Acting-Principal (17 Mar. to
20 Oct.)
Rev. R. L. Kilgour, M.A., Acting-Chaplain (10 Apr. to 14 Dec.)
Mr. C. Funani, Training School (1 April to 31 Dec.)
Mr. E. N. Homann, B.A., Training School (12 July to 31 Dec.)
Mrs. M. S. Kingon, " " 6 Apr. " "
Miss E. O. Rushmere, " " 18 Oct. " "
Mr. N. K. Sham, B.A., " " (16 Mar. to 15 June)
Dr. M. Hurwitz, M.B., Ch.B., Hospital (22 Apr. to 31 Aug.)
Mrs. J. Jolobe, Hospital (1 Oct. to 31 Oct.)
Miss H. van Niekerk, R.N., C.M., Hospital (22 Nov. to 31 Dec.)
Mrs. J. Rajuili, Hospital (27 Sept. to 31 Oct.)
Mr. W. Drennan, Carpentry and Building (to 31 Dec.)
Mr. A. Marinus, " " "
Mr. H. McGillicuddy, " " "
Mr. G. Schultz, " " "

(4) **Leave granted during year.**

Mr. B. B. Mdledle, Training School (1 Apr. to 31 Dec.)
Miss C. Roberts " " (15 Mar. to 31 Dec.)
Dr. R. Ross, M.B., Ch.B., Hospital (1 Jan. to 31 May.)
Miss M. Saint, R.N., C.M., C.R.N., Hospital (1 Dec. to 31 Dec.)
Dr. A. W. Wilkie, Principal (17 Mar. to 20 Oct.)

(5) **Resignations, during year.**

Miss A. Greer, Training School (30 Sept.)
Mr. B. W. Lloyd, " " (31 March)
Miss M. Pirt, R.N., Hospital (30 Nov.)
Miss A. Randle, R.N., C.M., Hospital (31 Aug.)
Dr. R. Ross, M.B. Ch.B, " (31 May.)

(6) **Resignations as at 31st December.**

Miss A. Cooper, R.N., C.M., Hospital.
Miss M. Harber, Bookstore.
Mr. F. P. Joshua, B.Sc., High School.
Dr. N. Macvicar, M.D., Hospital.
Mrs. Msutu, Hospital School.
Mrs. Ross, M.D., F.R.C.S., Hospital.
Mrs. Tshangela, One Teacher School.
Miss A. Wells, Domestic Science.
Miss C. Zondani, Practising School.

(7) **Leave granted for 1938.**

Miss E. H. Henderson, B A , High School (one year).
Miss C. Roberts, Training School (six months).
Miss M. Saint, R.N., C.M., C.R.N. Hospital, Matron (five months).

(8) **Appointments for 1938.**

Miss B. Botha, One Teacher School.
Miss S. Campbell, R.N., C.M., Hospital.
Miss A. Carter, B.A., High School.
Mr. B. Conradie, B A , Training School.
Mrs. Goduka, Practising School.
Dr. A. Grattan Guinness, Hospital.
Miss G. Harber, Bookstore.
Miss R. Howard, M.A., Training School
Miss M. Kerr, R N., C.M., Hospital.
Rev J. R. Jolobe, Bible School.
Miss L. M. Moore, Domestic Science.
Miss E. P. Ngozwana, B.A., High School.
Miss R. Pauw, B.A., Training School.
Mrs. P. Radebe, Hospital School,
Mrs. Reynolds, R.N., C.M., Hospital.
Miss E. H Smith, Bookstore.

STAFF TOTALS 1937.

	<u>Men.</u>	<u>Women.</u>	<u>Total.</u>	<u>Wives.</u>	<u>Children.</u>	<u>Aggregate.</u>
European	37	26	63	18	24	105
Africans	36	18	54	23	62	139
	73	44	117	41	86	224

VICTORIA HOSPITAL BOARD.

Chairman : Dr. N. Macvicar, M.D., C.M., D.P.H.

Hon. Secretary : Mr. D. A. Hunter, F.R.S.G.S.

Member ex-officio : Dr. N. Macvicar, Medical Superintendent.

Appointed by Lovedale Governing Council.

Rev. E. W. Grant, Lovedale Bible School.

Mr. D. A. Hunter, Lovedale.

Rev. A. W. Wilkie, D.D., Principal, Lovedale (on leave 17 March
to 20 Oct.)

†Rev. R. H. W. Shepherd, M.A., Acting Principal (17 March
to 20 Oct.)

Appointed by Cape Province Government :

Rev. H. L. Henschman, Rector, Alice.

Mr. M. L. C. Liefeldt, Magistrate, Victoria East, Alice.

VICTORIA HOSPITAL.

Medical Superintendent and Chief Medical Officer :

Dr. Neil Macvicar M.D., C.M., D.P.H. (Edin.)

Assistant Medical Officer :

*Dr. Richard Ross, M.B., Ch.B. (Edin.) to 31 May

†Dr. Hurwitz, M.B., Ch.B. (Edin.), 22 April to 31 Aug.

Mrs. Ryan, M.R.C.S. (Eng.) L.R.C.P. (Lond.)

from 1 Aug.

Surgeon : Mrs. Ross, M.D., F.R.C.S. (Edin.)

„ Mr. W. C. J. Cooper, M.B., Ch.D.B., F.R.C.S. (Edin.)

Matron : Miss M. Saint, R.N., C.M., C.R.N. (on leave from 1 Dec.)

Sisters : Miss M. Wilson, R.N., C.M., (T.B. Cert.) (Acting
Matron : from 1 Dec.)

„ Miss E. L. Clark, R.N., C.M.

„ Miss A. M. Cooper, R.N., C.M. (from 24 Oct.)

„ Miss E. A. Lord, R.N., C.M.

„ *Miss M. Pirt, R. N. (to 30 Nov.)

„ *Miss A. Randle, R.N., C.M., R.F.N. (to 31 Aug.)

„ †Miss H. Van Niekerk, R.N., C.M. (from 22 Nov.)

†Temporary Appointments.

*Resigned during the year.

Staff Nurses : †Mrs. J. Jolobe, (1 Oct. to 31 Oct.)
 †Mrs. J. Rajuili, (27 Sept. to 31 Oct.)
Book-keeper : Miss S. Boyce
Assistant-Housekeeper : *Miss M. Gray, (to 31 Aug.)
 *Miss A. Majiza, (from 1 Oct.)
Teacher : Mrs. Msutu.
Hon. Secretary : Mr. D. A. Hunter, F.R.S.G.S.
Nurses : 50.
Domestic : Petros Dhlamini, Furnace man and assistant.
 Kitchen, Homes and Ward Domestics : 18.
 Laundry Women 11.

PATIENTS TREATED DURING 1937.

Inpatients.

In Hospital 1st January, 1937	135
Admitted during the year	1,489
	1,624
Total Inpatients treated during 1937	1,624
Patients discharged "Cured"	948
Patients discharged "Relieved"	303
Patients discharged "Not Relieved"	84
Patients died in hospital	128
Patients in hospital at close of year	161
	1,624
Daily Average of inpatients in Hospital during 1937	157.4
Operations during 1937 : (major 40, minor 152)	192

Outpatients.

Outpatients seen during 1937	
Individual cases	5,690
Attendances	7,741
Daily Average (excluding Sundays)	24.73

Analysis of Inpatient Cases admitted during 1937.

Tuberculosis of lungs and pleurae	110
Tuberculosis of spine	56
Tuberculosis of other bones and joints	14
Tuberculosis of glands	35
Tuberculosis, other forms	7

Total of tuberculosis cases	222
Enteric Fever	39
Typhus Fever	6
Tick-bite Fever	2
Dysentery and enteritis	47
Influenza	50
Bronchitis and broncho-pneumonia	91
Lobar pneumonia	119
Acute suppurations	33
Appendicitis	12
Accidents (68) and assaults (12)	80
Maternity	89
Gynecological	86
Diseases of the skin	25
Diseases of the heart and blood vessels	55
Diseases of the nervous system	28
Eye Diseases	62
Diseases of ear, nose, mouth and throat	63
Cancer	12
Debility from malnutrition	47
Scurvy	70
Pellagra	3
Syphilis	95
Miscellaneous	153
				<hr/> 1,489

*Causes of death of patients who died in Hospital during the year
1937*

Alcoholism	2
Acute yellow atrophy of liver	1
Appendicitis	1
Acute general peritonitis	1
Acute obstruction of bowel	2
Acute osteomyelitis	1
Burns (ages 5, 6, 2, 3.)	4
Carcinoma	2
Diarrhoea (1 with scurvy)	4
Dysentery (1 with scurvy)	2
Diphtheria	1
Enlarged prostate	1
Enteric fever	9
Fracture of skull (2 motor accidents)	2
General dropsy (? from food deficiency)	1
Heart disease	3
Hydatid disease	1
Nephritis	1

Pneumonia, broncho (4 with scurvy)	20
Pneumonia, lobar	11
Pneumococcal toxæmia (infant)	1
Prematurity	4
Paraplegia (cause ?)	1
Retroperitoneal cyst	1
Septic scalp wounds (assault)	1
Syphilis, congenital	6
Syphilis in adult	1
Scurvy	9
Tetanus	1
T.B. glands (1 with scurvy)	3
T.B. lungs (1 with scurvy)	19
T.B. meningitis (1 with scurvy)	2
T.B. spine	4
Typhus fever	2
Ulceration	1
Whooping cough	2
			<hr/>
			128
			<hr/>

DUX LIST

1937

<i>High School :</i>	Lloyd Smith.
<i>Training School :</i>	Beccaria Botha.
<i>Domestic Science :</i>	Eudora Makapela.
<i>Boys' Industrial Prizes (Final year) :—</i>	
<i>Carpentry & Building :</i>	Alfred Maxam.

EXAMINATION RESULTS

1937.

	<i>Grade 1</i>	<i>Grade 2</i>	<i>Total</i>
<i>High School</i>			
Senior Certificate	1	9	10
Junior Certificate	4	43	47
 <i>Training School.</i>			
Native Primary Higher, 2nd Year	4	11	15
Native Primary Lower, 3rd Year	3	32	35
Native Primary Lower, 1st Year	14	43	57
Housecraft Teachers, 2nd year	—	1	1
 <i>Domestic Science.</i> 8			
<i>Boys' Industrial (Completion of Apprenticeship Certificates).</i>			
Carpentry	2		

Victoria Hospital.

Final Nursing Examination 6 entered and 6 passed.

Junior Nursing Certificate: Anatomy and Physiology 16 entered :
16 passed, two in honours list.

ENROLMENT, 1937

	Boys	Girls	Total
High School	185	51	236
Training School	80	134	214
Practising School	297	292	589
One-Teacher School	13	15	28
Hospital School	17	25	42
	592	517	1109
Carpentry	27	—	27
Building	14	—	14
Combined Carpentry and Building	9	—	9
Printing and Bookbinding	21	—	21
	71	—	71
Domestic Science	—	19	19
Probationer Nurses	—	56	56
	—	75	75
<i>Aggregate</i>	663	592	1255

NATIVE FEES RECEIVED.

Comparative view since commencement of Fees in 1871.

1870-1879	8,174
1880-1889	12,184
1890-1899	26,161
1900-1909	47,153
1910-1919	65,405
1920-1929	97,972
1930-1934 (5 years)	52,696
1935	11,125
1936	10,615
1937	10,589
Total	£342,074

THE LOVEDALE ROLL.

COMPARATIVE VIEW OF TEN YEARS.

	1928	1929	1930	1931	1932	1933	1934	1935	1936	1937
Boys', Boarders :—										
Pupils ..	342	362	325	302	337	347	339	348	334	324
Apprentices ..	99	84	64	53	46	42	46	62	72	71
TOTAL ..	441	446	389	355	383	389	385	410	406	395
Girls', Boarders :—										
Pupils ..	202	220	190	173	168	184	228	244	235	244
Training in Hospital ..	34	31	35	43	33	36	43	42	47	56
TOTAL ..	236	251	225	216	201	220	271	286	282	300
Day Pupils :—										
Boys ..							217	180	228	268
Girls ..							248	217	241	292
TOTAL ..	367	364	425	504	457	459	465	397	469	560
AGGREGATE	1044	1061	1039	1075	1041	1068	1121	1093	1157	1255

METEOROLOGICAL REPORT.

Observer : Mr. C. A. Pilson.

There were good rains in the first quarter of the year amounting to nearly eight inches, and fair rains fell during the last quarter yielding nearly six inches, but during the intervening half-year no single month received as much as one inch and the total for that period was but three inches.

Thus the rainfall for the whole year—just under 17 inches—was six inches below our modest average of 23 inches.

Four years ago things were almost as bad, but we have to go back ten years to find one worse than 1937.

This area did not suffer as much as one might imagine from these figures, for the river maintained a steady flow, fed by mountain rains.

The winter was not unduly cold ; frost was noted on 25 nights but in no case was it specially severe.

The most important figures from our observations are given below :—

Month	Temperatures F.					Rainfall (inches)	
	Absolute Maximum	Mean Maximum	Temp. of month	Mean Minimum	Absolute Minimum	During 1937	Average for 1880—1937
Jan.	102	87	74	61	50	2.69	2.55
Feb.	105	89	76	63	50	2.01	2.60
Mar.	103	85	72	59	45	3.26	3.09
April	96	80	65	50	38	0.63	1.83
May	92	77	61	45	34	0.77	1.44
June	85	71	56	40	30	0.17	0.93
July	81	69	54	40	30	0.50	0.95
Aug.	97	76	59	42	32	0.15	0.87
Sept.	102	74	59	44	36	0.91	1.63
Oct.	102	81	66	52	43	1.06	2.03
Nov.	102	82	69	57	46	1.90	2.53
Dec.	97	82	69	57	46	2.88	2.52
Total rainfall						16.93	22.97

Mean temperature for the year 65 degrees, 1 or 2 above normal.

Lovedale Appeal Fund

(1936).

CONTRIBUTIONS TO 31st DECEMBER, 1937.

African German Investments, Ltd., Johannes- burg	100	0	0
Anonymous Lovedale	1	0	0
W. G. Bennie, Capetown (second instalment)	25	0	0
De Beers Consolidated Mines Ltd., Kimberley	500	0	0
Miss Dodds, Southampton	10	0	0
Alex. Fowler, Lovedale	2	0	0
Friend (per J. L.) Johannesburg	2	0	0
Frost & Holmes (Pty.) Ltd., Port Elizabeth	1	1	0
Glasgow "J. C.," Scotland	100	0	0
I. Grimmer, Kimberley	25	0	0
Gen. Sir Aylmer Haldane & the Misses Haldane, Scotland	10	0	0
Mrs. and Miss Henderson, Lovedale	2	0	0
Hillman Bros., Ltd., Johannesburg	10	10	0
Sir Henry Keith, Scotland	10	0	0
Dr. J. Lennox, Johannesburg	10	0	0
A. Linton, Port Elizabeth	10	0	0
Lion Match Co. Ltd., Langlaagte	100	0	0
Mrs. G. E. Matthews, Alice	5	0	0
L. Z. Mumba, Nyasaland	0	12	6
Native Recruiting Corp., Ltd., Johannesburg	7500	0	0
James Neilson & Mailer do	10	0	0
Robert Niven, do	250	0	0
Arthur L. Ohlson, Johannesburg	10	0	0
Mr. & Mrs. Bernard Price, Johannesburg	1000	0	0
Miss J. L. Rogers, Lovedale	5	0	0
Mrs. C. Russel, Johannesburg	1	1	0
John M. Shepherd, Rochester, U.S.A.	2	0	0
Miss M. Shingler, Lovedale	5	0	0

Mr. and Mrs. F. Carey Slater, Wynburg, C.P.	25	0	0
E. S. L. Taffe, Johannesburg	1	1	0
G. W. Fait, Edinburgh	1	1	0
Victoria Falls & Transvaal Power Co., Johannes- burg	100	0	0
A. D. Viney	10	10	0
Walter Webber, Johannesburg	126	5	0
Dr. A. W. Wilkie, Lovedale	25	0	0
Mrs. M. B. Wilkie, do	10	0	0

Collected Rev. Rabbi M. Hirsch, Pretoria.

J. Bernstein	1	1	0
L. Bernstein	1	1	0
Lewis Bernstein	2	2	0
B. Cohen	1	1	0
Mrs. M. Cohen	2	2	0
Dr. Epstein	2	2	0
P. Esakor	1	1	0
A. Falkson	2	2	0
H. Falkson	1	1	0
Mr. Gavron	1	1	0
Goldberg Bros.	5	5	0
Goldblum and Glass	1	1	0
Dr. H. Goldin	2	2	0
I. Goldin	2	2	0
Goodman Bros.	3	3	0
P. Harris	1	1	0
Mr. Herman	1	1	0
Hillman Bros.	3	3	0
Mr. M. Hirshowitz	2	2	0
S. Jaffe	0	10	6
B. Joffe	0	10	6
Mr. Katzenellenbogen	5	5	0
G. Katzenellenbogen	1	1	0
M. Liebman	3	3	0
D. Levy	1	1	0
Dr. Machol	1	1	0

Collected per Rev. Rabbi M. Hirsch, Pretoria

D. Meyer	1	1	0
Mr. Moffsowitz	0	10	6
M. Neifelt	1	1	0
Mr. Nuterhalter	1	1	0
Orkin Bros.	3	3	0
Mr. Pearlman	1	1	0
Mr. Pott	1	1	0
S. Rutowitz	3	3	0
S. Schmulow	3	3	0
L. Schulman	2	2	0
Selesnik & Meyers	10	10	0
H. Sher	2	2	0
I. Solomon	2	2	0
R. Stein		10	6
E. Ziman	1	1	0
H. Ziman	1	1	0

£81 7 6

Contributions etc. from Lovedale Former Students.

J. Arosi, Blythswood	1	0	0
Joshua Goduka, Bloemfontein	2	0	0
Shadrack Hashe, King W. T.	1	0	0
Mrs. Jeanne Jolobe, Lovedale	10	6	
Howard Kekana, Koornpunt	5	0	
Miss Ethel Kwinana, Burnshill	1	0	
Moses Kobie, King William's Town	1	0	0
Dr. M. C. C. Motebang, Mokhotsong	2	0	0
Houghton W. D. Msila, Kentane	10	0	
M. Mwezeni, Elliotdale	2	6	
Mrs. C. Molotto, Port Elizabeth	2	6	
Miss Beatrice F. W. Mdani, Mount Frere	2	0	
Miss Wynona Mantanga, Maclear	10	0	
Ranton Mdaka, Lusikisiki	10	0	
Temba Mtiya, Genesa	2	6	
Mrs. Annie S. Mosadi, Bloemfontein	10	0	

Mr. & Mrs. Ntanga, Elliotdale	5	0
Mason Nhantsi, do	5	0
Mr. & Mrs. Nhantsi do	5	0
"Old Student," Kroonstad	2	6
T. M. Ramoshoana, Hopetown	5	0
Albert M. Siwisa, Kirkwood	5	0
M. Senzangabom, Graaff Reinet	10	0
Joshua Tambo, Elliotdale	2	6
Miss Eleanor Tshangela, Cape Town	10	0
Miss Georgina Vikilahle, Cala	6	0
S. Williams, Berlin	2	6
Collections per P. Kopo	1	6 0
„ „ Dr. M. C. C. Motebang			2	6 0
„ „ Geo. M. Pemba	1	8 0
King William's Town Proceeds Ball (per G. Pemba)	1	0 0
			<hr/>	
		Total	£10,106	13 6
			<hr/>	

Henderson Memorial Church Fund.

STATEMENT AS AT 31st DECEMBER, 1937.

<i>Contributions, etc., per Statement dated</i>			
<i>31 December 1936</i>	£648 17 3
Anonymous	10 0 0
Miss Dodds	5 0 0
Dundee:— 1st Company Boys Brigade			1 0 0
Fife:— Gauldry Sunday School	..		1 0 0
Fife:— Wormit Sunday School	..		15 6
M. Goodman	5 0 0
Lovedale Institution Church	11 10 0
Miss Adeline Moeletsi	10 0
Mr. & Mrs. C. A. Pilson	22 13 4
Mr. & Mrs. F. Carey Slater	10 0 0
Br. Kaffrarian Savings Bank Interest			
less Bank Charges	24 13 9
		Total	£740 19 10

THE CONSTITUTION OF THE LOVEDALE MISSIONARY INSTITUTION.

(This constitution has been approved by the Foreign Mission Committee of the Church of Scotland.)

The Lovedale Missionary Institution shall be administered in accordance with the following constitution.

I. NAME AND OBJECT OF THE INSTITUTION.

The Institution shall be called the Lovedale Missionary Institution. Its efforts shall be devoted to the uplifting of the Native and Coloured people of Africa by means of religious work, by general and specialised education, and by industrial training. The admission of students other than African shall be at the discretion of the Governing Council.

The Institution is a Christian organisation and all members of its staff shall be professing Christians, and of Missionary sympathy

II. GOVERNING COUNCIL.

1. The Institution shall be under the control of a Governing Council constituted in the following manner, and this body shall be designated the Lovedale Governing Council.

- (i) The Institution shall be represented by the Principal, Vice-Principal, Head of High School, Head of Training School, Head of the Practising School, the Minister of the Congregation, the Lady Superintendent of the Girls' School, Vice-Superintendent of the Girls School, Medical Superintendent of the Victoria Hospital, Boarding Master, a senior member of the Boys' Industrial School staff and the Head of the General Office. The election of two others shall be in the hands of the Governing Council, their appointment being for two years, one retiring each year.
- (ii) The Lovedale Bible School shall be represented by the Head of the School.

- (iii) The Mission Council of the Church of Scotland shall appoint three members for a period of three years.
- (iv) The General Assembly of the Bantu Presbyterian Church shall appoint one member for a period of three years.
- (v) His Excellency the Governor General in Council may appoint two members for a period of five years.
- (vi) The Superintendent General of Education of the Cape Province may appoint two members to the Council for a period of five years.
- (vii) The Executive Committee of the Governing Council shall nominate six members, men or women, who shall be chosen because of outstanding knowledge of affairs, business capacity, and sympathy with the Native people. These members shall be appointed with the approval of the Foreign Mission Committee of the Church of Scotland for a period of five years.
- (viii) The Executive Committee of the Governing Council shall appoint two Native members to represent past students for a period of three years.
- (ix) The Council shall from time to time appoint a Secretary who may or may not have the powers of a full member of the Council as the Council shall determine.

2. In the event of any of the bodies entitled to nominate or appoint a member failing to do so, the action of the other members forming the Council shall in no way be invalidated by such failure.

3. The Governing Council, subject to the approval of the Foreign Mission Committee shall frame the policy and arrange for the management of the Institution and determine courses of study and practical training, and shall be responsible for the finance. The Council shall appoint or nominate for appointment the staff, except that the appointment of the Principal of the Institution, the Minister of the Congregation, and the Lady Superintendent of the Girls' School shall be made by the Foreign Mission Committee of the Church of Scotland, after consultation with the Governing Council.

4. Members of the staff shall ordinarily obtain leave of absence from the Council. In cases of emergency leave may be granted by the Principal or the Executive Committee, subject where necessary to the regulations of the Department of Public Education.

5. The Governing Council may by vote of not less than three-fourths of the members present, subject to the approval of the Foreign Mission Committee amend or add to the provisions of this constitution, provided that (a) formal notice shall have been given of proposed alterations, and (b) such draft alterations shall have been sent to all members of the Council at least two months prior to the meeting.

III. PROCEDURE OF THE GOVERNING COUNCIL.

1. The meetings of the Governing Council shall ordinarily be held at Lovedale. Ordinary meetings shall be held at least twice a year ; special meetings shall also be held upon a requisition addressed to the chairman and signed by seven members of the Governing Council. Members of the Council shall receive at least fourteen days notice of the meetings. Seven shall form a quorum except for resolutions altering the Constitution, when fifteen shall form a quorum.
2. The first ordinary meeting of each year shall elect an Executive Committee of ten members who shall carry on the business of the Institution between the meetings of the Governing Council, subject to the instructions of the Council. The Executive Committee shall keep minutes of its meetings which shall be confirmed at the following meeting of the Council. The Council shall also at its first meeting of each year elect a Finance Committee and other committees as required.
3. The accounts of the Institution shall be made up to the 31st December of each year and an audited statement of the accounts shall be submitted to the first ordinary meeting of Council after that date.

4. At any special meeting of the Governing Council only such business as is mentioned in the notice calling the meeting shall be transacted.
5. The Principal shall ex-officio be the chairman of the Governing Council and of all committees. He may appoint the Vice-Principal or a member of committee to act as his deputy on the committee. The first ordinary meeting of the Council in each year shall appoint a vice-chairman of the Governing Council.
6. The Chairman of the Council or committee shall have a deliberative as well as a casting vote.

IV. THE SENATE.

1. Subject to the foregoing provisions the co-ordination of the work, discipline and recreation of the Institution shall be vested in the Senate consisting of
 - a. The Principal, Vice-Principal, heads of the Training School, High School, Practising School, Lady Superintendent of the Girls' School, Vice-Superintendent of the Girls' School, Minister of the Congregation, two representatives from the Boys' Industrial School elected by the heads of the various industrial departments, and the Boarding Master.
 - b. Eight other members of the staff elected at a meeting of all heads of Departments, teachers and instructors.
2. The meeting to elect members of Senate shall take place during the first fortnight of the first session. Appointments shall be for one year.
3. The Senate shall hold ordinary meetings at such intervals as the Senate shall determine. Special meetings for ad hoc business shall be held as the Principal or chairman shall determine. A special meeting shall also be held on receipt of a requisition signed by four members of the Senate.
4. Seven shall form a quorum in the Senate.
5. The Principal shall, when present, preside at all meetings of the Senate and in his absence the Vice-Principal.

6. Committees for the year shall be appointed at the first meeting for each year.

7. The Senate shall arrange for the establishing of a Students' Representative Council.

V. ACTIONS AT LAW.

All actions and other proceedings at law to be instituted by or against the Lovedale Missionary Institution shall be instituted or brought in the name of the Chairman of the Lovedale Governing Council and all powers of attorney, contracts, and formal documents on behalf of the Institution shall be signed by the Chairman of the Governing Council.

The Chairman shall incur no personal responsibility in respect of such actions or other proceedings, and shall in his conduct therein observe all regulations and all directions given by the Governing Council on behalf of the Institution.

Collection Number: AD1715

SOUTH AFRICAN INSTITUTE OF RACE RELATIONS (SAIRR), 1892-1974

PUBLISHER:

Collection Funder:- Atlantic Philanthropies Foundation

Publisher:- Historical Papers Research Archive

Location:- Johannesburg

©2013

LEGAL NOTICES:

Copyright Notice: All materials on the Historical Papers website are protected by South African copyright law and may not be reproduced, distributed, transmitted, displayed, or otherwise published in any format, without the prior written permission of the copyright owner.

Disclaimer and Terms of Use: Provided that you maintain all copyright and other notices contained therein, you may download material (one machine readable copy and one print copy per page) for your personal and/or educational non-commercial use only.

People using these records relating to the archives of Historical Papers, The Library, University of the Witwatersrand, Johannesburg, are reminded that such records sometimes contain material which is uncorroborated, inaccurate, distorted or untrue. While these digital records are true facsimiles of paper documents and the information contained herein is obtained from sources believed to be accurate and reliable, Historical Papers, University of the Witwatersrand has not independently verified their content. Consequently, the University is not responsible for any errors or omissions and excludes any and all liability for any errors in or omissions from the information on the website or any related information on third party websites accessible from this website.

This document forms part of the archive of the South African Institute of Race Relations (SAIRR), held at the Historical Papers Research Archive at The University of the Witwatersrand, Johannesburg, South Africa.