

29

Princess Alice Nursing Home

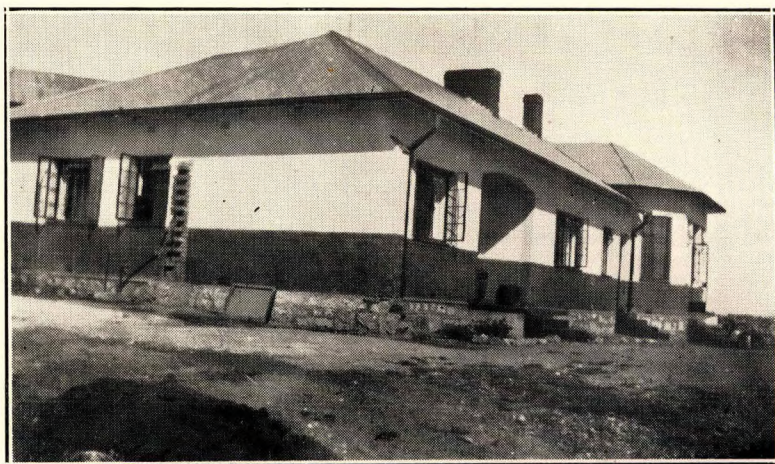
SOPHIATOWN, JOHANNESBURG



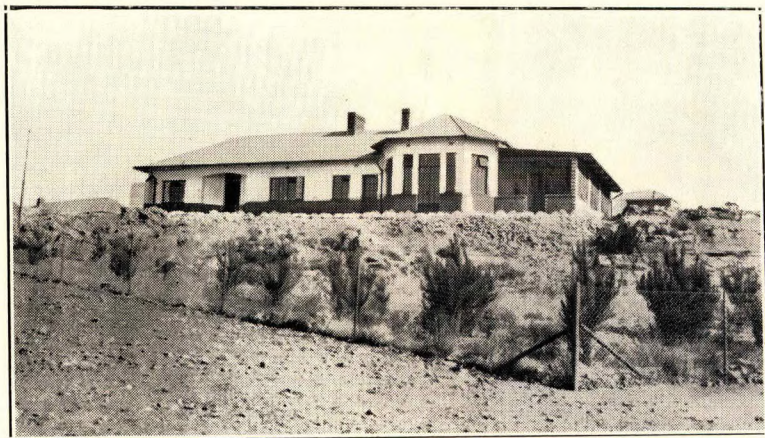
ANNUAL REPORT

————— 1933 —————

PRINCESS ALICE NURSING HOME



At 31st December, 1932



At 31st December, 1933,
showing New Verandah (Stoep) added during the year,
being part of the "Madeleine & Mary Tugman" Memorial

Members of the
Executive Committee.

- The Rev. H. Scott Chignell (Chairman).
The Ven. Archdeacon W. F. Hill, C.R.
The Rev. Father W. Aidan Cotton, C.R.
The Rev. H. N. Mortimer.
The Rev. J. B. Shortt.
The Rev. Bernard Sigamoney.
Dr. S. Ethel Rolfe (Medical Officer).
Dr. Janet Mc. L. Robertson.
Dr. E. Marjorie Store.
Dr. H. R. Mullins.
Miss Elsie C. Harris (Matron).
Mrs. C. W. R. Campbell.
Mrs. W. A. Palmer.
Mrs. G. E. Alexander.
Mrs. F. C. Black.
Miss D. Maud.
Miss M. Leeke.
Mrs. I. M. Fergusson (Hon. Secretary & Treasurer).
- Departures* :— The Right Rev. A. B. L. Karney & Mrs. Karney.
The Rev. D. F. Stowell and Mrs. Stowell.
Miss C. Albu, (now Mrs. W. Parker).
- New Members* :—The Rev. J. B. Shortt and Dr. H. R. Mullins.

House Committee.

- Mrs. H. N. Mortimer (Hon. Sec.)
Dr. S. E. Rolfe, *ex-officio*.
The Matron (Miss E. C. Harris), *ex-officio*.
Mrs. C. W. R. Campbell.
Mrs. J. B. Shortt.
Miss D. Maud.
Mrs. I. M. Fergusson.

Medical Report

1933.

THE second annual report of the Nursing Home must begin with a record of a number of changes in the Staff.

Dr. J. McL. Robertson was transferred to work on the East Rand, and left the Nursing Home in June. The pioneer work of teaching the people to trust the Home and all the difficulties of the first year were very ably shouldered by her, and the Hospital Staff are very grateful to her for all she did for them.

Sister Barbara De Salis left us in September as her year's service came to an end then; we all missed her very much. Her work among the little ones was of great value and they all loved her very dearly.

Staff Nurse Elizabeth Lazarus left in July to do her General training: we wish her much success in her nursing career.

The Sophiatown and Klipspruit Clinics (Nancefield) were amalgamated with the Nursing Home at the end of June, so figures are reported with the statistics of the Nursing Home. They are now the Out-patients' Departments.

IN-PATIENTS.

Admissions	-	-	-	234
Discharges	-	-	-	194
Deaths	-	-	-	36

ANALYSIS OF INCIDENCE OF DISEASE.

Lobar Pneumonia	-	-	-	10
Broncho Pneumonia	-	-	-	31
Enteritis	-	-	-	32
Premature Infants	-	-	-	9
Pulmonary T. B.	-	-	-	10
Destitute Infants	-	-	-	3
Burns	-	-	-	7
Improper Feeding	-	-	-	19
Enteric	-	-	-	8
Venereal Disease	-	-	-	22
Dysentery	-	-	-	6
Other Diseases	-	-	-	63

OUT-PATIENTS.

Sophiatown, 1,673.

Klipspruit (Nancefield), 1,123.

These figures do not include Out Patient dressings or repeats of medicine given to patients who are not examined.

Princess Alice Nursing Home Annual Report 3

Figures really comprise the main essence of the Doctor's Report, but I am afraid that I must include very special thanks to the many kind friends who have given us voluntary help and to Matron for her loyal service. Miss Bayes, our voluntary masseuse, has given us more help than most, for she has not only helped with the In-patient work, but has tramped Sophiatown in the heat of the summer to help Out-patients in their homes. Her cheery presence is not only a tonic to the patients, but to the staff as well.

Miss Kathleen Goodchild has been a very great help to me personally, in keeping the books in the Out-patients.

Mrs. Palmer and Mrs. Alexander, who have been running the baby clinics so very successfully, went overseas in October for a holiday. Miss Albu, who took charge of the baby clinic in Sophiatown, was married in September and has gone to live in Pretoria. We wish her very much happiness. Matron is running the clinic now in addition to her many other duties. Mrs. Pittar has kindly taken over the Klipspruit clinic.

The Rev. D. Stowell, our Chaplain, was transferred to Pretoria in September, and we missed him very much, as he took a keen and personal interest in the Home. However, we have been very pleased to welcome the Rev. H. N. Mortimer and to find that he is also taking an interest in the Home both from the spiritual and practical point of view.

The "Ekutuleni" ladies visit the In-patients weekly and continue to help in every way possible.

The number of interesting cases we have had are too numerous to give in detail. Some of our cases come in at the last moment so we cannot help them very much medically but we have had many answers to prayer in seemingly hopeless cases. Owing to the amount of sickness among the little ones and the fact that admission had to be refused to needy cases during the season of "Enteritis or Green Diarrhoea," the Committee decided to expend the "Tugman Memorial Fund" Collection on a very large ward for children, and work on this has just commenced. We are very grateful to Dr. H. R. Mullins for the very practical way in which he is helping us to work out how we can build without any unnecessary expense, and is obtaining many of the materials for us at cost price. He has spent many hours doing this and has proved himself over and over again "a friend indeed."

Last but not least by any means of the "Thank You's" is that to our very able and efficient Secretary and Treasurer: each is a job in itself but Mrs. Fergusson seems to do both very effectually and yet to have time to help any member of the staff who wants advice on business matters. I did not realise until I took on the position of Medical Officer, how much work was involved in being Secretary and Treasurer to the Nursing Home. Mrs. Fergusson

4 Princess Alice Nursing Home Annual Report

deserves and has our very hearty gratitude for all the voluntary work she does on our behalf.

STAFF AS ON 31st DECEMBER, 1933.

<i>Medical Officer</i>	-	-	Dr. S. Ethel Rolfe.
<i>Matron</i>	-	-	Miss Elsie C. Harris.
<i>Masseuse (Hon.)</i>	-	-	Miss M. Bayes.
<i>Chaplain</i>	-	-	The Rev. H. N. Mortimer.
<i>Dispenser</i>	-	-	Mr. Birch.
<i>Staff Nurses</i>	-	-	Lydia Kambule and Hilda Alexander.
<i>Probationers</i>	-	-	2. Domestic 1.
<i>Klipspruit Nurse</i>	-	-	Mrs. Esther Leoto.
<i>Sophiatown, Outpatients' Nurse</i>	-	-	Mrs. Betty Dichabeng.

S. ETHEL ROLFE,
Medical Officer.



Chairman's Report.

OUR baby has grown in the past year, as all healthy babies should. It is still very young and in need of fostering care, especially since it lost its Mother, Dr. Mary Tugman, in its infancy. If anyone should be called its Foster Father, it would be Bishop Karney; and now the babe has had to part with him, though his interest and prayers are still with it, but the milk of human compassion flows strongly in Johannesburg; always there are kind women, and even men, whose hearts go out to the helpless and the young, and we can thank God for many blessings and gifts in this, our second year of existence.

The Home was enlarged by a spacious Stoop early in the year. This was the first part of the Tugman Memorial. At a cost of £68 10s, out of money subscribed by South African friends, we have provided almost an open-air ward, where consumptives can lie in the light and fresh air. In October the decision was made to spend the balance of the Memorial Fund on a Children's Ward. There has been much discussion as to the way in which the £207 collected in England, through the good offices of Mrs. Weir, and in memory of Madeleine and Mary Tugman, should be used. Then we heard of a grant of £100 from the Marriott Bequest Fund, and we saw ourselves with the best part of £400 to spend. Our Doctor conferred with the local Medical Officer of Health, and it was clear that there was a real need for more accommodation for sick native babes and small children. We were fortunate in having Dr. H. R. Mullins on our Executive, and he took up the scheme with the greatest enthusiasm. Through his influence we secured plans for a Ward 24ft. x 50ft., and a builder who could be relied upon to give us the best results for the money, and at a general meeting of our supporters, the great decision was made. We have with us the Rev. J. B. Shortt, a nephew of Mrs. Tugman and Archdeacon Skey (now Dean of Salisbury, S. Rhodesia) and he represented the overseas subscribers. It is good to know that this decision has met with the warm approval of Bishop Karney and our good English friends. By the end of the year the work was well in hand.

The Doctor's Report tells of the changes in the Staff; but she cannot speak of our gratitude to her for so nobly stepping into the breach caused by the transfer of Dr. Janet Robertson, and for all her willing and careful services. It was indeed a blessing that she was free to take over the medical work of the Home and the clinics. That this work has prospered and increased under her care is the best testimonial to her ability and devotion.

6 Princess Alice Nursing Home Annual Report

The Executive offers its really grateful thanks to all donors and subscribers both in South Africa and Overseas. The Mining Houses, in several cases, increased their grants; without them, most of the Works of Mercy in this city would collapse. The Municipal Council renewed their grant of £50. Mrs. George Nelson once again organised the Street Collection, without which we should be very short of funds indeed.

We are most grateful to the Honorary Auditors, Messrs. Douglas, Low & Co., to the "Good Companions," to the staff of "Ekutuleni," and to all other kind friends too numerous to mention, who by their support and interest have helped us to carry on during the year, and to care for our growing baby, the Princess Alice Nursing Home.

With the Children's Ward, occupied with 20 to 30 babes, and the old Ward with its 11 beds full, we feel that the Home will become more and more useful to the Native population of Sophiatown and districts.

HUGH S. CHIGNELL,
Chairman.



Treasurer's Report.

THERE have been several changes in the organisation of the Nursing Home, so that a comparison of figures with 1932 will hardly be fair, except in a few instances.

Donations. The donations received total £959 17s. 6d. in cash (including contributions to staff salaries) and £34 16s. 6d. the value of gifts in kind. The cash donations show an increase of £117 9s. 2d. and the gifts in kind a decrease of £54 0s. 6d. on last year's figures. The Street Collection, which was held in July, amounted to £155 19s. 10d. This with the Grant of £50 from the City of Johannesburg is included in the above total. During the year we received over £71 through the Transvaal Missions Office in England, donated by Overseas friends, which rather helps to swell our figures for 1933.

Patients' Fees. In comparing the Patients' Fees with 1932 it must be remembered that the figures shown on the Revenue & Expenditure Account include the Out-patients' Fees (Nancefield and Sophiatown Clinics) from July 1st, 1933, as these two clinics were amalgamated with the Nursing Home from that date; they are now known as the Out-patients' Departments of the Nursing Home. The Fees received from the Outpatients for the 6 months were over £203, and the In-patients' Fees for the twelve months ending 31st December, 1933 were £123.

In-patients. The total number of patients admitted to the Nursing Home during the year under review was 234, as against 325 for the twelve and two-third months ending December 31st, 1932. The patients remained in the Home for a longer period than last year, so that it would be misleading to compare this year's figures with last.

Maintenance. The maintenance of the Home for 1933 averages about £110 per month—this includes all drugs used both in the Home and by the out-patients, also the Doctor's salary in full and the salaries of the out-patients' nurses (2) and Dispenser, etc. Last year the maintenance averaged about £75 per month for the Nursing Home only, so that approximately £35 per month must be added to cover the extra drugs and additional salaries, etc. It is interesting to note that the revenue derived from the out-patients fees more than covers this additional maintenance cost.

Salaries & Wages. This figure shows an increase of £160 but it is impossible to make a comparison with 1932, as it will be remembered that we did not have any Matron's salary to pay for the first six and two-third months the Home was opened, and we also had voluntary assistance.

8 Princess Alice Nursing Home Annual Report

Depreciation. Although the property has been maintained in good order, the Committee considered it advisable to write off 5%, or £103 15s. 4d. for depreciation from the 1932 figures, viz. £2,075 8s. It is not their intention to write off a similar amount each year, but they considered the figure was fully justified over the two years ending 1933.

Balance Sheet. We show a small deficit of £11 2s. 3d. for the year ending December 31st, 1933.

The "Madeleine & Mary Tugman Memorial," Marriott Bequest, & Building Extension Fund. The Chairman, in his report, has already mentioned the new Children's Ward which is being built with the funds collected both in South Africa and England towards the "Memorial Fund." First of all the Stoep was built, which cost £68 10s. as part of the Memorial, and the balance in hand at the end of December, 1933 was £247 18s. 7d.; add to this the Marriott Bequest, the amount promised being £100, and the special Building Extension Fund opened in March, viz. £29 13s. 1d. the total available for building was £377 11s. 8d. There were several further contributions promised so that the £400 which was agreed to by the Committee for the building of the new Ward was well in hand.

We hope to get donations towards equipment, and several cots have already been promised.

When asked what the Revenue of the Home is, it is rather difficult to reply, as it will be noted that apart from the grant of £50 from the City of Johannesburg, the Patients' Fees, donations from the ever-generous Mining Houses, which can more or less be relied upon, and a few other City firms, etc., we have not yet managed to obtain regular annual subscriptions from individuals, except in a few instances. We were fortunate in having "surprise" donations from very generous donors last year, and we would like to place on record our thanks to several branches of the Church Women's Society who subscribe to the Home, also several Societies among the Native Women of Sophiatown, Western Native Township, etc. who send along donations.

I. M. FERGUSSON,
Hon. Secretary & Treasurer.

Princess Alice Nursing Home.

Balance Sheet at 31st December, 1933.

LIABILITIES.			ASSETS.	
ACCUMULATED FUNDS		2,438		
Balance at 31st December, 1932	... 2,273 3 2			... 2,090 2 8
<i>Add.</i> Building Extension Fund transferred	... 29 13 1			
Amount transferred from Mary Tugman Memorial Fund	... 68 10 0			
Sophiatown Mission Dispensary; Balance of Assets over Liabilities taken over	... 78 9 11			
	2,449 16 2			
<i>Less</i> Balance from Revenue and Expenditure A/c being deficit for the year ended 31/12/33	... 11 2 3			
MARY TUGMAN MEMORIAL FUND		40	14	4
Donations received	... 109 4 4			
<i>Less:</i> Transferred to Accumulated Funds in respect of Expenditure during the year	... 68 10 0			
SUNDRY CREDITORS	47	3	8
NOTE. — This Balance Sheet does not include amounts collected in England and held there on account of the Mary Tugman Memorial Fund.				
		£2,526	11	11
				£2,526
				11
				11

I. M. FERGUSON,
Hon. Secretary & Treasurer.

Johannesburg.
12th April, 1934.

Audited and found correct.
DOUGLAS, LOW & Co., Incorporated Accountants,
Hon. Auditors.

Princess Alice Nursing Home.

Revenue and Expenditure Account for the year ended 31st December, 1933.

EXPENDITURE.				RECEIPTS.		
To Assessment Rates and Sanitary Fees	33 6 10	By Donations	...	994 14 0
.. Salaries and Wages	391 15 0	.. Patients' Fees	...	326 10 5
.. General Expenses	17 3 7	.. Balance, being excess Expenditure over Revenue,		
.. Provisions and Household Supplies	223 0 2	transferred to accumulated Funds	...	11 2 3
.. Fuel, Light and Water	58 12 10			
.. Drugs and sundry Medical Supplies	130 3 6			
.. Printing, Stationery, Postages, Telephones and Bank Charges	43 2 11			
.. Doctor's Salary and Transport	258 10 0			
.. Linen, Cockery, etc. used	50 2 9			
.. Repairs to Property, etc.	8 8 9			
.. Furlough Fund	9 0 0			
.. Locums	5 5 0			
.. Depreciation on Property	103 15 4			
			£1,332 6 8			£1,332 6 8

Subscriptions & Donations, 1933.

<i>Maintenance & Equipment Fund.</i>		£	s.	d.
A.B.M. Women's Association		10	0	
Archer, Sir John & Lady		33	6	8
Anglo-French Exploration Co., Ltd.		3	3	0
"Anonymous" per Miss D. Maud		1	0	0
Anglo-American Corporation of S. A., Ltd.		10	10	0
American Shirt Waist, Ltd.		1	1	0
Alexandra & Sherwell St. Native Mission, Good Friday Collection		11	3	
Burchmore, Mrs. J. C.		1	0	0
Bantu Men's Social Centre proceeds of Concert		2	16	11
Bell, E. A.		2	6	
Booyens, All Saints Branch Church Women's Society		2	5	0
Bloemhof Native Mission, Good Friday Collection		10	0	
Betty, Miss Kemis— per Miss R. Cowles		1	0	0
per Miss D. Maud		10	0	0
Bridgman, Mrs. C. D.		1	1	0
Brebner, Professor		3	0	0
Bucknall, Mrs. L. L.		10	0	
Barnarto Group of Mines		5	0	0
Berson, Wittert & Co., Ltd.		1	1	0
Barrett, A. L. (Director of Native Labour)		10	0	0
Chignell, Rev. H. S.		5	0	0
Campbell, Mrs. C. W. R.		1	10	0
.. for Office Desk		1	11	0
Carew-Hunt, Miss A. (Exc. 8d.)		19	4	
Cane, Mrs. (sale of bricks)		9	0	
Cowles, Miss Ruth		1	0	0
Cummins, Miss E. L.		5	0	0
Central News Agency, Ltd.		10	0	0
Church Women's Society, Ann. Conference Grant		3	0	0
Cassel, Paul		10	6	
Crown Mines Nat. Mission Good Friday Collection		1	6	2
East Rand Medical Mission (towards purchase of Typewriter)		6	0	0
Episcopal Modern School, Exeter (K. M. Branch) per Miss D. Mortimer (Exc. 1/4)		2	1	8
Evans, Mrs. J.L.T. (Exc. 1/5)		4	18	7
Emdon, Mrs. Henry		2	2	0
Fehrson, Mrs.		1	10	0
Friede, S. B.		1	1	0
Fisher, L.		1	1	0
"Little David Grier"		2	0	0
Girls' Diocesan Association Collection 22/1/33		1	2	3
St. Gabriel's, Hulme, Manchester		5	0	
"Georgie" per Mrs. Corbett		1	0	
Greathhead, Miss N. I.		10	0	
Ginya, Miss M. A., per General Mining & Finance Corporation, Ltd.		5	0	0
Gratus & Gratus (Pty.) Ltd.		1	1	0
Graumann, Sidney S.		1	1	0
Heymann, Gordon (Pty.), Ltd.		5	0	0
Haslam, Mrs. E. H. (Exc. 4/8)		34	15	4
(£15 transferred to Sophiatown Miss. Dispensary a/c)				
Henley, Major F. J. (Cont. to Staff Salary)		6	0	0
Hillman, W. (Hillman Bros.)		5	5	0
Hunt, Leuchars & Hepburn, Ltd.		3	3	0
Hilson, A. (Hilson & Taylor (Pty.), Ltd.		10	6	
Heidelberg Native Mission, Good Friday Collection		4	5	
Illingworth, Mrs. A. L. (Exc. 6d.)		4	19	6
City of Johannesburg, Grant		50	0	0
Jeppe, St. Mary-the-Less		1	0	0
The Rt. Rev. A.B.L. Karney & Mrs. Karney (Cont. to Staff Sal. £10; Don. £30)		40	0	0
Klerksdorp Native Mission, Good Friday Collection		1	0	1
Kruger, Sam.		2	2	0
Krugersdorp Nat. Mission, Good Friday Collection		7	6	
Leeke, Miss M.		2	2	0
Latter, Mr. & Mrs. M. P.		6	0	0
Le May, Professor H.		5	0	0
Macdougall, Mrs.		1	0	0
Maud, Miss D.		2	2	0
.. Tickets 2/6, Office Furniture 12/6		15	0	
Meyer, Dr. & Mrs. R. C. J.		3	3	0
Muller, George		1	0	0
Maraisburg & Florida Parish (per Mrs. M. Kerrich)		1	1	0
Mole, Mrs. E. W.		1	1	0
Martin, Mrs. W. A.		5	0	0
"Motsieloa" Concert (half share)		4	13	3
Mills, Mrs. Frank (Exc. 9d.)		19	3	

12 Princess Alice Nursing Home Annual Report

	£	s.	d.		£	s.	d.
Mortimer, Mrs. H. N.	3	0	0	The "Star"	15	0	0
Mendelsohn, Bert	2	2	0	Sive Bros. & Karnovsky, Ltd.	2	2	0
Mullins, Dr. H. R.	2	0	0	Sacké, Estate of the late			
Maquassi Sunday School	10	0	0	Henry	1	1	0
Mendelsohn, M. (A. Wilk (Pty.), Ltd.)	1	1	0	Starfield, B.	1	1	0
Melville & Auckland Park (St. Peter's)	7	7	0	St. John's Fete (¼ share)	37	15	6
„ (Ch. Women's Soc.)	1	11	6	St. Matthias, Torquay	1	0	0
New Consolidated Gold- fields	10	0	0	St. Cyprian's Sunday Sch., Good Friday Collection	1	12	6
Parktown, St. George's (in Collection)	5	0	0	St. Cyprian's Nat. Mission, Good Friday Collection	2	17	10
„ (part Lent Offerings)	5	0	0	St. Mary Magdalene, Sophi- atown, Sunday Sch. Coll.	1	1	0
„ (Prayer Circle)	4	17	9	St. Mary's, Daggakraal, Good Friday Collection	2	6	0
Palmer & Alexander, Mes- dames	8	0	0	St. Mary's Cathedral Boxes	2	2	0
Parkview Church Council	5	0	0	„ ½ Coll. (9.30 a.m. service) (Oct. 1st)	3	1	8
Parkview Parish—				Taylor, Dr. Dexter	1	0	0
per Mrs. Black	£5	1	0	Union Corporation Group	25	0	0
„ Coll., St. Wini- fred's School	2	6	9	Victoria Falls & Transvaal Power Co., Ltd.	5	0	0
Tableaux	4	13	3	Vigor, Deaconess Elsie	10	0	0
„ Xmas Carols	12	1	0	Wright, Miss	15	0	0
The "Paladins"	3	13	6	Wilson, W. Attwood	1	1	0
Pretoria Portland Cement Co., Ltd.	25	0	0	Western Native Township, Ladies' Social Society	1	0	0
Richards, Miss E. (Exc. 1/2) (Cont. to Staff Sal.)	11	18	10	<i>Miscellaneous.</i>			
Randfontein Nat. Mission, Good Friday Collection	10	6	0	Collection Box at Nursing Home	19	0	0
Read, Mr. & Mrs. C. L.	2	2	0	Collection Box at "Ekutu- leni"	16	4	0
Rand Daily Mails, Ltd.	5	0	0	Collection at General Meet- ing held at "Ekutuleni"			
Rolfe, Dr. S. E.	1	0	0	15/2/33	2	7	3
Roberts, Mrs. F. G. A.	1	1	0	Collection at Gen. Meeting 24/11/33	1	14	3
Rand Mines, Ltd.	50	0	0	Collection at Native Ser- vice, Synod	7	17	9
Rosebank Branch, St. Mar- tin's-in-the-Veld, C.W.S.	10	6	0	Jumble Sale & Sale of chil- dren's clothes, per the Mesdames Palmer and Alexander	6	0	0
Rosebank, St. Martin's-in- the-Veld	1	10	0	per Ven. Archdeacon G. H. Cameron, Office of the Transvaal Missions in England	71	11	7
"In Remembrance"	6	0	0	Jumble at Sophiatown (ear- marked for Repairs and Household requirements)	2	5	9
Smith, Mr. & Mrs. Jas. (£25 transf. to Sophiatown Miss. Dispensary A/c)	77	0	0	Street Collection 29/7/33	155	19	10
Stowell, Rev. D. F.	5	0	0	per Diocesan Office	1	0	0
Stowell, Mrs. D. F.	9	0	0	Sundries	5	0	0
Singh, Kunwar & Kunwa- rani	1	0	0				
De Salis, Lady (Exc. 1/6)	1	3	6				
Springs Native Mission, Good Friday Collection	13	11	0				
Sunday Times Syndic., Ltd.	5	0	0				
Smith, Mr. & Mrs. G. Hildick	2	2	0				
Sewell, Miss A. L.	10	0	0				
Seth Smith, Miss Olive	1	2	6				
Store, Dr. E. M.	3	0	0				
				Total	£959	17	6

Donations should be sent to:—

The Hon. Secretary, Princess Alice Nursing Home,

P. O. Box 1131, Johannesburg.

Contributions to the
Madeleine & Mary Tugman
Memorial Fund.

	£	s.	d.
<i>South African.</i>			
Mr. & Mrs. H. Britten . . .	1	1	0
Miss M. Brazier . . .		8	6
Mrs. L. F. Collens . . .		10	0
Church Women's Society, Ann. Conference Grant . . .	2	0	0
East Rand Med. Mission . . .	10	0	0
The Rt. Rev. A.B.L. Karney . . .	20	0	0
The Rev. H. Leach (Photo) . . .		1	0
Mrs. G. Robson (Photo) . . .		1	6
J. F. Sandwich (less Exc. 1/4) . . .	2	0	8
St. Peter's Sunday School Native Class (pennies) . . .		8	0
St. Peter's Day School, sub- Standards Lent Savings per Deaconess Elsie Vigor (Photos) . . .		3	6
		7	0
	£37	1	2

	£	s.	d.
<i>Overseas Contributions</i> per Mrs. M. M. Weir.			
Anon.	1	0	0
Archer, Lady	10	5	0
Anon., per Miss Isaacs		5	0
Anon., per Miss Gilmore		5	0
Allen, Miss E. A.		5	0
H. R. H. Princess Alice, Countess of Athlone	5	0	0
Anon., reader of C.E.N.		10	0
Anon.		2	0
Anon., C.E.N.	1	0	0
Anon.		2	6
Bronson, Miss N. W.	1	0	0
Baverstock, Rev. E. P.		10	6
Birkett, Miss	1	0	0
Bankes, Miss	1	5	0
Birley, Miss E.		10	0
Birley, Miss C. M.		5	0
Burnand, Miss C.		5	0
Bucknall, Miss L.		2	6
Ball, Mrs.	10	0	0
Birley, Miss	1	0	0
Beckwith, Miss		10	6
Castleman, Miss M.		5	0
Chown, Dr.		5	5
Chown, Dr. Dorothy		5	5
Cook, Miss M.		10	0
Cobbold, Mrs.		5	0
Copeman, Miss		10	0

	£	s.	d.
Cecil, Sister C.S.P.		5	0
Chisman, Mrs. & Miss		1	0
Cotton, Miss M. Alwin, for St. Mary's Hospital Mis- sionary Association	10	10	0
Davidson, Miss		10	0
Denison, Prebendary		10	0
Davies, Mrs.	1	12	6
Dewe, Rev. T.		1	1
Edwards, Miss A. C.		5	0
Finch, Miss E. M.		2	6
Fletcher, Miss		1	1
Fergusson, Miss E. R.		1	1
Grey, Mrs. Robin		1	0
Gilmore, Miss M.		10	0
Houghton, Mrs.		2	2
Hicks, Mrs. C.		1	0
Hollis, Mrs.		1	1
Hewson, Mrs.		2	2
Harvey Mapleton, The Misses & Mr.		1	1
Hewson, Miss M.		2	0
Hindle, Mrs. & Miss		1	1
Hall, Miss A. E.		5	0
Hewson, Miss		1	0
Holton, Miss H.		5	0
Isaacs, Miss		7	0
Jackson, Mrs. B. M.		2	6
Jervoise, Miss E. M.		5	0
Kell, Miss		10	0
Luttrall, Miss		2	2
Lees, Mrs		1	0
Lindam, Rev. J. A.		10	0
Laura, Sister, St. Michael's School	7	10	0
Milford, Rev. L. S.		5	0
Malden, Miss		3	0
Mosse, Mrs.		1	1
Ogilvy, Mr. & Mrs.		5	0
Oldershaw, Miss		1	0
Pepys, Mrs.		1	0
Parker, The Hon. Mrs.		1	0
Pittman, N. B., Esq.		1	1
Pittman, Mrs.		10	6
Pittman, Miss		10	6
Rawnsley, Miss E.		1	1
Rolt, Mrs.		1	1
Robertson, Mrs.		1	0
Rose, Miss Allan		2	0
Raines, Mrs.		10	0
Ridwen, Mr. & Mrs.		1	0
Skey, Mrs.		5	0

14 Princess Alice Nursing Home Annual Report

£ s. d.			£ s. d.			
Sharpe, Rev. A. J. & Mrs.	2	2	0	Tomkins, Miss	5	0
Skey, W. N., Esq.	3	3	0	Tiarks, Miss Emily	2	2
Shortt, Mr. & Mrs.	1	1	0	Tylee, Mrs.	6	5
Skey, Miss	2	0	0	Thomas, Mrs.	2	6
Shortt, Rev. J. B.	10	6		Todd, Miss E. A.	1	0
Skey, A. C. E., Esq.	3	0	0	Tatham, Miss	1	1
Skey, Miss	3	0	0	Tylee, Rev. T. C.	10	0
Smith, Mrs. Rawson	2	2	0	Weir, Mrs. G. A.	10	0
Skey, H. F. Lonsdale, Esq.	10	0		White, R. C., Esq.	10	0
Skey, W. Noel, Esq.	2	2	0	Winship, Rev. C.	10	0
Stainer, Lady	5	0		Westropp, Miss	5	0
Stainer, Miss	5	0		Weir, Mrs. M. M.	2	2
Sharpe, Mrs.	2	0	0	Weir, Dr. & Mrs.	5	5
Smith, Miss G.	2	6		Warden, Miss E. S.	5	0
Seaton, Miss	2	2	0	Williams, Mrs. O. M.	5	0
St. Paul's Sale at Bedford	10	19	4	Yates, Miss	10	0
Skey, Col. & Mrs.	2	2	0	Sundries, Interest, etc.	1	7
Stenning, Miss	2	16	6			
Skey, Miss, per			2			3
Skey, Miss, American Tea	10	7	6			
					£207	4
						3

Contributions to Building Extension & Equipment Fund.

	£	s.	d.
A. C. Solomon, Esq.	10	0	0
Miss E. E. Rawnsley (less Exc. 1/5)	4	18	7
Barnato Group of Mines	10	0	0
"Little David Grier"	1	0	0
Syd. Harvey, Esq.	5	0	0
Miss M. Porter	1	0	0
	£31	18	7

Gifts Section.

WE are very grateful for the undermentioned gifts received during the year :—

Dr. J. McL. Robertson	-	-	Hosepipe.
Miss Carew-Hunt	-	-	Cups, Saucers and Plates.
Mrs. Lowe	-	-	Eggs.
Mrs. A. B. L. Karney	-	-	Bedspread, Tea Cloths, etc.
Dr. S. E. Rolfe	-	-	Luncheon Set and Bed Jackets.
The Rev. H. S. Chignell	-	-	Washstand.
Mr. & Mrs. J. Roberts	-	-	Fruit, Vegetables and Plants.
Mr. Magewebaba	-	-	2 pints milk daily for limited period.
Mrs. Titus	-	-	Fowl, Eggs, Plants, etc.
Sophiatown Coloured Comforts Com.			Seven new mattresses.
St. Saviour's, Paddington, Parish Gift			
Sewing Day	-	-	Clothes, etc.
Ditto, Working Party (per Mrs. M. M. Weir	-	-	Nightdresses, Bedjackets, etc.
Mrs. Pratt (Brakpan)	-	-	Groceries, Bottles, Toys, Fruit and Jumble, etc.
Anonymous, per Diocesan Office	-	-	Toys, Books, etc.
Ditto	-	-	2 pairs of slippers.
Mrs. Merkel	-	-	Fruit.
Mr. & Mrs. Henry Clarke	-	-	Mincing machine.
Toc H League of Women Helpers	-	-	Bandages, Bottles, Clothes, New Nightdresses, etc.
Mrs. A. C. Turner	-	-	6 new mattress covers, 2 boxes used tennis balls and old towels.
Mrs. Nixon	-	-	Toy box for Stoep.
Mrs. Janish	-	-	1 mattress.
Miss Thompson*	-	-	1 mattress.
per Miss D. Maud	-	-	Woollen vests, etc.
per Miss C. Albu (Mrs. W. Parker)	-	-	Clothes and baby's bath.
The Rev. W. E. C. Frith	-	-	2 Woollen blankets and 2 prs. sheets.
per Miss Withers	-	-	2 second-hand blankets & air cushion.
per Mrs. Birch	-	-	Books and children's clothes.
Mrs. A. R. Callow	-	-	4 cot blankets.
per Miss Henley	-	-	Nightdresses and children's clothes.
per Mrs. G. Alexander	-	-	Fruit, etc.
Mrs. Friednan	-	-	1 perambulator and cot.
Mrs. Johnson (Parkwood)	-	-	1 mincing machine.
Mrs. Carlisle	-	-	Knitted woollies.
Mrs. Trousdale	-	-	1 mincing machine.
Mrs. C. W. R. Campbell	-	-	Bottles, Toys, child's dressing-gown and old linen.
Mrs. Johnston	-	-	Old linen.
Miss K. Shaw	-	-	Second-hand Nurses aprons and caps.
St. Paul's Working Party, Bedford, England (per The Vicarage)	-	-	Nurses aprons and doeks, dusters, tea cloths and quilt.
Auckland Park Preparatory School, per Mrs. Trenery	-	-	Dolls and knitted covers.
Mrs. J. M. Trenery	-	-	1 mattress.
per "Ekutuleni"	-	-	4 blankets.
per Miss M. Leeke (brought from England)	-	-	Bandages, children's shirts, night-dresses, etc.

16 Princess Alice Nursing Home Annual Report

GIFTS SECTION (*continued*).

Mrs. Lewis	-	-	-	-	Old linen.
Miss K. Goodchild	-	-	-	-	Bed Jackets.
Mrs. Dodson	-	-	-	-	Sheeting and old toys.
Mrs. Newborn	-	-	-	-	Linen.
Mr. Garnett	-	-	-	-	Old toys.
Johannesburg High School for Girls	-	-	-	-	2 galls. milk weekly for several months taken to Nancefield Loc. clinic.
Mesdames Palmer & Alexander	-	-	-	-	1 teak chair for Office use.

Donations for Christmas Gifts to Patients, Decorations and extra Groceries, etc.

The Rev. H. Chignell, Mrs. C. W. R. Campbell, Mrs. Porteous,
Miss E. E. Skinner, Mrs. Monale, and others.

Our grateful thanks to all providers of bottles, they are too numerous to mention in detail.

Note.—Parcels (with name and address of sender enclosed) should be sent to :—

The Matron,
Princess Alice Nursing Home,
Ray Street, Sophiatown,
Johannesburg.

Telephone : Newlands 64.



Report

*of the Anglican Medical Mission of the Rand
for 1933.*

FROM 1st July, 1933 part of the Central Medical Mission was amalgamated with the Princess Alice Nursing Home, with the exception of the Vrededorp Clinic which remained under the care of Dr. J. McL. Robertson who started it in 1932. The Nancefield (Klipspruit) and Sophiatown Clinics are now known as the Out-patients Departments of the Nursing Home.

During the last year the work of the Benoni Medical Clinic has steadily increased and in April Dr. E. M. Store gave up the Springs and Nigel Clinics in order to concentrate on the Benoni Clinic. The increase in attendances has fully justified this change, as the Benoni Clinic is quite as much as one Doctor can manage.

With regard to the other East Rand Clinics, Dr. Ethel Rolfe very kindly locumed at Nigel and Springs during April and May 1933 and from June 1st, Dr. J. McL. Robertson has been in charge of the Germiston, Nigel, Springs and Vrededorp Clinics.

STATISTICS.

<i>Benoni.</i>	General Patients	5,226	
	Injections	4,986	
		<hr/>	10,212
<i>Springs.</i>	General Patients		1,280
<i>Nigel.</i>	" "		524
<i>Germiston.</i>	General Patients	1,262	
	Injections	1,688	
		<hr/>	2,950
<i>Vrededorp.</i>			684

(Nancefield (Klipspruit) & Sophiatown are shown in the Princess Alice Nursing Home Report).

Our grateful thanks to all donors of bottles, etc., and to those who have carried on the baby clinics.

DONATIONS

to the Central Medical Mission from January to June, 1933.

	£	s.	d.
Per Transvaal Missions, overseas subscribers	-	36	17 3
Weston-super-Mare	-	29	15 0
Mr. & Mrs. Jas. Smith	-	25	0 0
Mrs. E. H. Haslam	-	15	0 0
Jumble Sale at Nancefield (earmarked for repairs to Nancefield Clinic)	-	9	18 1
St. Mary's Cathedral	-	5	13 2
St. Margaret's-at-Cliffe, Dover	-	1	19 9

E. L. CAMPBELL,

Hon. Secretary,

Joint Central & East Rand Medical Mission.

Collection Number: AD1715

SOUTH AFRICAN INSTITUTE OF RACE RELATIONS (SAIRR), 1892-1974

PUBLISHER:

Collection Funder:- Atlantic Philanthropies Foundation

Publisher:- Historical Papers Research Archive

Location:- Johannesburg

©2013

LEGAL NOTICES:

Copyright Notice: All materials on the Historical Papers website are protected by South African copyright law and may not be reproduced, distributed, transmitted, displayed, or otherwise published in any format, without the prior written permission of the copyright owner.

Disclaimer and Terms of Use: Provided that you maintain all copyright and other notices contained therein, you may download material (one machine readable copy and one print copy per page) for your personal and/or educational non-commercial use only.

People using these records relating to the archives of Historical Papers, The Library, University of the Witwatersrand, Johannesburg, are reminded that such records sometimes contain material which is uncorroborated, inaccurate, distorted or untrue. While these digital records are true facsimiles of paper documents and the information contained herein is obtained from sources believed to be accurate and reliable, Historical Papers, University of the Witwatersrand has not independently verified their content. Consequently, the University is not responsible for any errors or omissions and excludes any and all liability for any errors in or omissions from the information on the website or any related information on third party websites accessible from this website.

This document forms part of the archive of the South African Institute of Race Relations (SAIRR), held at the Historical Papers Research Archive at The University of the Witwatersrand, Johannesburg, South Africa.