



Report for 1932
of
S. MARY'S
Native Mission Hospital
Kwa Magwaza, Zululand.



**S. MARY'S NATIVE MISSION
HOSPITAL
KWA MAGWAZA :: ZULULAND**



31st DECEMBER, 1932



Members of S. Mary's Hospital Board:

MAJOR H. T. JAMES (Chair-
man).

BISHOP OF ZULULAND.

A. CARR, Esq. (Hon. Secretary
to the Board).

THE MEDICAL OFFICER.

MRS. LEITCH.

MRS. HAMILTON.

MISS SYMMONDS.

MISS LUCY MALLANDAINE
(Secretary and Treasurer).

Auditors:

GEORGE MACKEURTAİN, SON & CROSOER, DURBAN.

Resident Medical Officer:

Miss J. CLATWORTHY, B.Sc., M.B. (Lond.), L.R.C.P., M.R.C.P. (Lond.)

Matron:

MISS LUCY MALLANDAINE.

Bankers:

THE STANDARD BANK OF SOUTH AFRICA, LTD.

Hon. Secretary in England:

MISS MARY LONG, PARKSTONE, DORSET



Christmas Day—Matron and Native Nursing Staff, with the House Girls
at the back.

AND THE



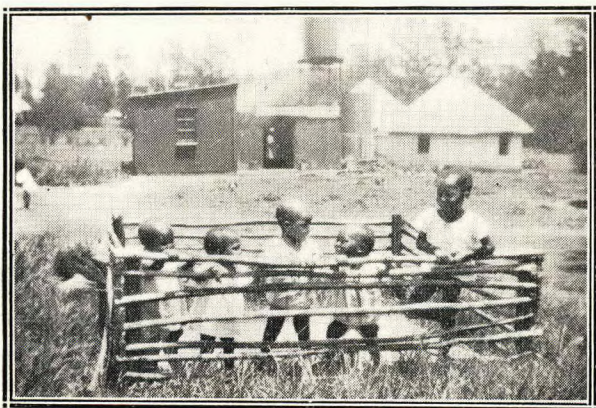
European Nursing Staff.

Report for 1932.

The twelve months ending on December 31st, 1932, have seen the work of the Hospital grow beyond all recognition. To a considerable extent this was due to the sudden spread of the *Anopheles Costalis* mosquito through the valleys of Zululand, with a resultant epidemic of Malaria Fever that spread through the kraals along the Mhlatusi, Mfolozi and other river courses of the district with a speed and virulence never before known in Zululand.

Unversed in the relationship between the mosquito and Malaria, or in the use of quinine in the treatment of the "fever," the Zulu, weakened by two years of drought, could put up no opposition to the advance of the infection.

By the end of April all available beds were filled, and it was not long before two marquees, loaned by the Magistrate, had also been packed with their quota of mattresses on the ground. The Hospital was filled to overflowing, but these men, women and children suffering with Malaria soon found that the medicine brought relief to their aches and pains, and the nourishing food, grown on Hospital land, filled out the wasted bodies that for long had known no diet other than the poorest of mealie meal.



Sun Treatment for Children convalescing after serious illness.



Our near neighbours.

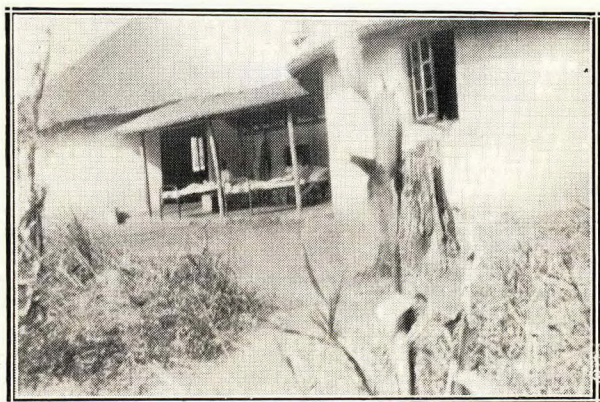


More near neighbours and the country they live in.

Good news soon spreads from kraal to kraal, and the word passed round that Malaria could be cured at Kwa Magwaza Hospital. The old dread of the white man's hospital and medicine has begun to be overcome.

The truth of this is shown in the increased numbers of Zulus attending, both as out- and as in-patients. During 1931 the average daily total of in-patients was 26, in 1932 it was 42, while during the year just ended 1,375 out-patient attendances were made. The Hospital has, indeed, the opportunity now of advancing along the lines on which it has so securely been built by Miss Mallandaine and her devoted fellow-workers in the past.

That the year ends sadly with Miss Mallandaine's departure is a matter for regret far deeper than the written word can express. To her alone has fallen the duty—a duty that to her was a living pleasure—of building in this distant corner of Zululand a monument to God and a temple of hope for every one who, sick and suffering, came to find peace and strength and good health once again. In bidding her good-bye and happy voyaging in the future, all who have worked with her at Kwa Magwaza will feel mingled with their sadness at parting a sense of pride at having been permitted to assist a little with her self-appointed task. She attained, as few others have ever done, the confidence of the Zulu; and he gives his confidence only to those he has learned to trust from long and personal experience.

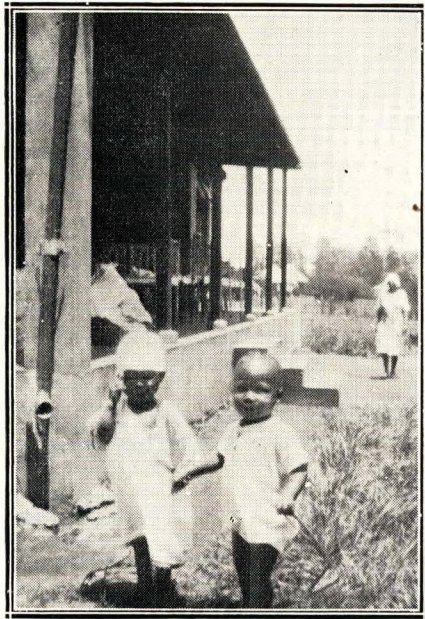


The Gregson Memorial Huts for Male Patients.

In bidding farewell to Miss Vialls also, the Hospital says good-bye to a friend and a worker whose valuable help may be in danger of being forgotten because it was given so often anonymously.

STAFF.

Dr. Anning acted as Resident Medical Officer from May until August, and the Hospital warmly welcomed Dr. Joan Clatworthy on her arrival on October 1st to take over the post of R.M.O.



Two Little Friends.

Miss Klamborowski left on furlough for England in January and returned on October 4th. She resigned from the Nursing Staff and left the Hospital on December 4th.

Miss Skinner was welcomed back in July to be in charge again of Out-Patients and the Theatre.

Miss Pollock gave valuable assistance while in charge of the Maternity Block during the Malaria season, and Miss ~~Lang~~ *Tony* and Miss Burgess are also to be remembered gratefully for their assistance at the same time.

BUILDINGS.

An anonymous donor, since the close of the year, has made a gift of her previous loan of £300 to the Building Fund—a loan that at no time had received interest. The hydraulic ram, at a cost of £178, has also been given by an anonymous believer in the value of Kwa Magwaza Hospital. The site and plan of the buildings was inspected by Dr. Cluver, Assistant Health Officer for the Union; they met with his approval and were submitted to, and passed by, the Hospital Board.

new

While the year closes on a note of personal sadness, every friend of the Hospital will start the New Year satisfied that the good work done in the past will continue month by month to increase. Miss Mallandaine's successor and the whole Staff, European and Native, will have their urgent prayers and wishes that the work of Kwa Magwaza Hospital may go on from strength to strength.

(Sgd.) C. C. P. ANNING,

Medical Officer of Health,

Pietermaritzburg.

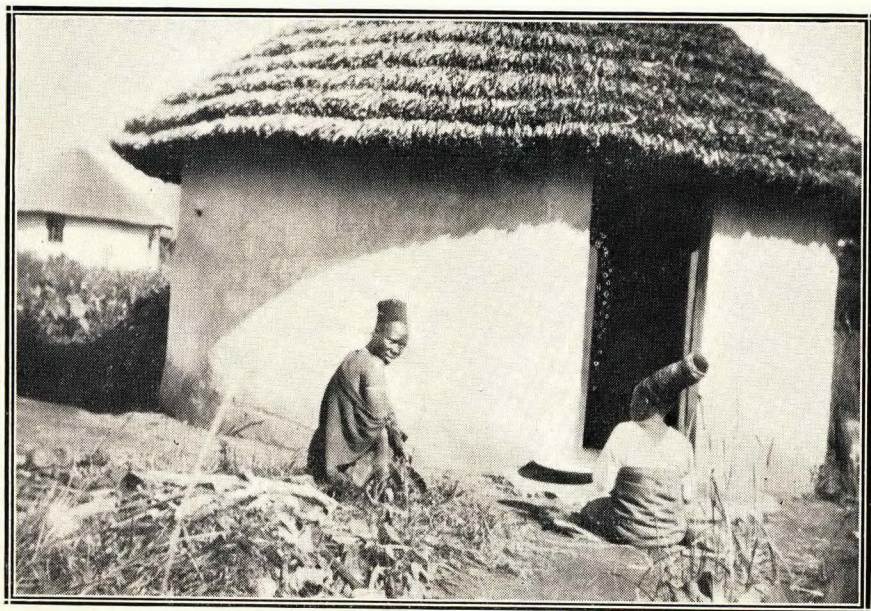
SUBSCRIPTIONS AND DONATIONS DURING 1932.

	£	s.	d.
Professor J. Boxwell	2	0	0
Mrs. Cox	0	5	0
Staff Nurse Lydia Kambule	2	0	0
Bishop Vyvyan (Special, re Malaria)	3	3	6
Professor J. Boxwell	1	0	6
Miss M. Pollock	2	10	0
Miss E. E. Skinner	25	0	0
Miss M. C. Jepson	1	1	0
Mrs. Arthur May	5	5	0
J McK. Malcolm, Esq.	2	0	0
Anon., Empangeni	1	0	0
Anon., Kwa Magwaza	1	0	0
Per Rev. C. F. Burrell,	0	10	0
Per Miss S. Atkin	6	2	9
Miss W. Allen	0	15	0
Bishop Vyvyan	2	2	0
Sneyd Church, Burslem	4	0	0
Mrs. B. White	0	5	0
Miss S. L. Luck	1	1	0
Dr. W. J. Morledge	2	2	0

SUBSCRIPTIONS AND DONATIONS DURING 1932—(Continued).

	£	s.	d.
S. Chad's Church	1	1	0
Teachers' Missionary Association	5	0	0
Aldborough, Norfolk	6	10	0
Joan and Jean (Adopted Cot)	5	0	0
Native Recruiting Corporation, Ltd.	50	0	0
Natal Tanning Extract Co. Ltd.	50	0	0
Randles Bro. & Hudson	5	5	0
H. R. Hickman, Esq.	5	5	0
Natal Estates, Ltd.	5	0	0
Lever Bros.	3	3	0
S. Butcher & Sons, Ltd.	2	2	0
The Dundee Coal Co. Ltd.	2	2	0
Per Mrs. Petter	4	0	0
Miss E. L. Clarke	2	2	0
Miss Coldham	0	5	0
West Coseley (per Churchwardens)	1	1	0
Miss F. C. Mallandaine	1	0	0
Miss Emily Knight	0	2	0
Miss Evans	1	1	0
Miss Mildred Lewin	1	0	0
Miss M. Barber (Adopted Bed)	2	10	0
W. Wyllys, Esq.	1	1	0
Mrs. N. S. Hodson	0	10	0
Mrs. F. Patteson	2	0	0
Miss A. Howes	0	5	0
Christ Church, Stafford	3	0	0
Miss Drinkwater	1	1	0
St. Barnabas Guild, Norwich Branch	2	0	0
Martock Mothers' Union	3	1	0
Mrs. G. Petter (box)	0	10	0
Miss Gertrude Allen	1	0	0
Miss Barber (Adopted Bed)	2	10	0
Mrs. C. Blake	3	0	0
Mrs. S. Lee	0	10	0
Rev. T. O. Beattie	1	0	0
Northern Missionary Association	1	0	0
Guild of S. Barnabas, Wolverhampton Branch	6	7	3
Miss H. S. Vialls	5	0	0
Miss H. M. Vialls	1	1	0
Miss C. Strange	1	0	0
Miss E. M. Gibson (Subs. and Don.)	2	0	0
Miss N. Gibson (Subs. and Don.)	2	0	0
"Petronella" (Adopted Bed)	5	0	0
Per Rev. A. Rowand	1	10	0
Marmalade	2	14	4
Miss F. C. Mallandaine	0	10	0
Miss Barnes, the late (box)	0	4	0
The Misses Gerrard	0	10	0
Miss Cowper Johnson	0	5	0
Miss C. Bliss	1	1	0
Mrs. P. Johnson	1	0	0
Rev. C. Barnard Nash	0	5	0
Miss Mabel Lewin	5	0	0
Per Miss Ethel Power	5	0	0
Miss E. Nisbet	0	10	0

	£	s.	d.
Mrs. Petter (Adopted Bed)	5	0	0
Mrs. S. H. Long	0	10	0
Mrs. Finlayson	0	5	0
William Palmer & Sons	2	2	0
Hansford & Hansford	2	2	0
H. Incledon & Co. Ltd.	2	2	0
Union-Castle Mail Steamship Co. Ltd.	1	1	0
Lennon, Ltd.	1	1	0
Allen & Hanburys, Ltd.	1	1	0
Ackermans, Ltd.	1	1	0
Durban Rickshas, Ltd.	1	1	0
Miss Mary Ditchett	1	0	0
Jumble Sale for Natives at S. Mary's, Kwa Magwaza	4	10	0



Day Hut for Waiting Mothers.

S. MARY'S HOSPITAL, KWA MAGWAZA.

Statement of Receipts and Payments, Quarter Ended 31st December, 1932.

RECEIPTS.						PAYMENTS.							
1932.						1932.							
Dec. 31.						Oct. 1.							
	£	s.	d.	£	s.	d.		£	s.	d.	£	s.	d.
By Nursing Fees Collected—							To Balance—as per last state-						
European	3	2	6				ment—						
Native	93	14	0				Petty Cash overdrawn ...	20	3	3			
				96	16	6	Cash Overdraft at Bank	8	4	10			
„ Donations—											28	8	1
Received	65	1	2				„ Provisions and Household						
In hands of the Diocesan							Expenses				67	0	8
Secretary in England	40	9	6				„ Salaries and Wages—						
				105	10	8	European Nurses, Doctor						
„ Workers' Board				13	0	0	and Matron	230	7	8			
„ Grants-in-Aid—							Native Nurses and Pro-						
Province of Natal	50	0	0				bationers	27	0	0			
Dept. of Public Health ...	50	0	0				General	47	18	6			
Society for the Propaga-											305	6	2
tion of the Gospel,							„ Maintenance—						
£40/-/-, less exchange							Buildings	5	11	0			
£7/18/9	32	1	3				Equipment	0	17	8			
Native Affairs Dept. ...	305	0	0				Hydraulic Ram	4	6	4			
				437	1	3	Electric Light Plant ...	15	4	0			
											25	19	0
							„ Drugs and Dressings				17	4	6
							„ Garden Expenses				9	2	6

£652 8 5

„ Bedding, Linen and Nurses' Uniforms	12 17 3
„ Travelling Expenses	1 9 0
„ Printing and Stationery	1 19 4
„ Chapel Expenses	0 19 6
„ Transport	2 2 11
„ General Expenses	7 2 6
„ Furniture and Fittings	3 14 6
„ Balance, — carried to next Account—	
Standard Bank of S.A.	
Ltd., Durban	128 13 0
In England	40 9 6
	<u>169 2 6</u>

£652 8 5

Balance Sheet, as at 30th September, 1932.

LIABILITIES.						ASSETS.							
	£	s.	d.	£	s.	d.		£	s.	d.	£	s.	d.
Loan				300	0	0	Buildings—						
Salaries Due but Unpaid ...				110	0	0	As per Balance Sheet,						
Provisions—Amount Unpaid				16	6	5	30th September, 1931	1,777	17	6			
Petty Cash Overdrawn	20	3	3				Additions during year	<u>72</u>	<u>14</u>	<u>6</u>	1,850	12	0
Standard Bank of South							(This amount does not						
Africa, Ltd.	8	4	10				include the value of						
				28	8	1	the original buildings						
							existing prior to						
							1920.)						
General Fund—							Electric Light and Installation—						
As per Balance Sheet,							As per Balance Sheet,						
30th September, 1931	2,378	10	1				30th September, 1931	105	0	0			
Add Excess of Revenue							Less Depreciation	<u>10</u>	<u>10</u>	<u>0</u>	94	10	0
over Expenditure for													
the year	336	1	9										
				2,714	11	10	Furniture and Fittings—						
							As per Balance Sheet,						
							30th September, 1931	226	12	0			
							Less Depreciation	<u>22</u>	<u>12</u>	<u>0</u>	204	0	0
							Equipment—						
							As per Balance Sheet,						
							30th September, 1931	192	10	0			
							Additions during year	<u>36</u>	<u>3</u>	<u>5</u>			
								228	13	5			

Less Depreciation	22	17	5			
	<hr/>			205	16	0
Bedding, Linen and Nurses' Uniforms—						
As valued by Matron				15	0	0
Instruments—						
As per Balance Sheet, 30th September, 1931	64	15	0			
Less Depreciation	6	10	0			
	<hr/>			58	5	0
Hydraulic Ram—						
As per Balance Sheet, 30th September, 1931	126	5	0			
Less Depreciation	12	15	0			
	<hr/>			113	10	0
Livestock				34	0	0
Stocks on Hand—						
Drugs and Dressings ...	20	0	0			
Provisions	75	0	0			
Fertilizer	2	0	0			
	<hr/>			97	0	0
Sundry Debtors—						
Nursing Fees, Native ...				496	13	4
	<hr/>					
	<hr/>			£3,169	6	4

We have written up the Books of the S. Mary's Hospital for the year ended 30th September, 1932, from the details furnished to us by Miss Mallandaine, who has also certified the values of Livestock, Stocks on Hand, and the amounts of the Native Outstandings, and we certify that the foregoing Balance Sheet is in accordance with the Books of the Institution as at 30th September, 1932.

Durban, 14th November, 1932.

GEORGE MACKEURTAN, SON & CROSOER,
Incorporated Accountants.

S. MARY'S HOSPITAL, KWA MAGWAZA.

Revenue and Expenditure Account for the Year Ended 30th September, 1932.

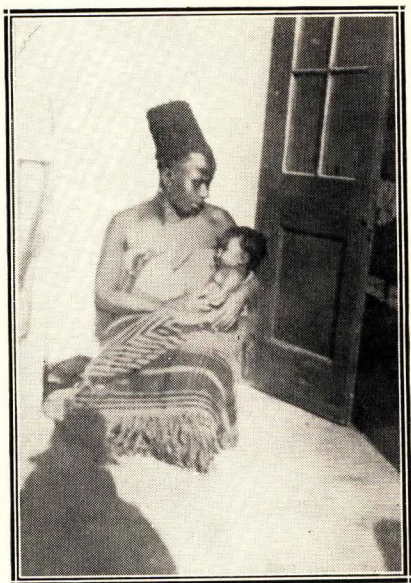
EXPENDITURE.						
	£	s.	d.	£	s.	d.
To Salaries and Wages—						
Doctor, Matron and Euro-						
pean Staff	453	3	6			
Native Nurses and Proba-						
tioners	134	5	0			
General	183	17	9			
				771	6	3
„ Provisions and Household						
Expenses				364	2	8
„ Drugs and Dressings				110	6	5
„ Transport and Forwarding				15	4	7
„ Travelling Expenses				5	1	9
„ General Expenses				19	19	3
„ Insurance				5	10	0
„ Printing and Stationery ...				12	18	0
„ Livestock Expenses				3	15	0
„ Garden Expenses				46	16	6
„ Chapel Expenses				0	19	3
„ Maintenance—						
Bedding, Linen and						
Nurses' Uniforms ...	85	18	9			
Repairs and Renewals ...	4	0	10			
Buildings	41	15	2			
Electric Light Plant ...	6	6	5			
Hydraulic Ram	14	1	2			
				152	2	4

REVENUE.						
	£	s.	d.	£	s.	d.
By Nursing Fees—						
European	20	2	6			
Native	544	16	3			
„ Donations						
				564	18	9
„ Grants-in-Aid—						
Society for the Propaga-						
tion of the Gospel—						
for the year	131	2	6			
Natal Provincial Council	200	0	0			
Native Affairs Dept. ...	523	15	0			
Dept. of Public Health	50	0	0			
Special Grants re Malaria—						
Natal Provincial Council	30	0	0			
Natal Provincial Council						
—Bedding and Linen	29	0	0			
				963	17	6
„ Visitors Board				14	12	0
„ Workers Board				52	0	0

„ Depreciation—				
Furniture and Fittings ...	22	12	0	
Instruments	6	10	0	
Equipment	22	17	5	
Hydraulic Ram	12	15	0	
Electric Light Installation	10	10	0	
	<hr/>			75 4 5
„ Balance, being Excess of Revenue over Expendi- ture for the year				336 1 9

£1,919 8 2

£1,919 8 2



“ The world hath no such flower in any land,
And no such pearl in any gulf the sea,
As any babe on any mother's knee.”

SWINBURNE.



Collection Number: AD1715

SOUTH AFRICAN INSTITUTE OF RACE RELATIONS (SAIRR), 1892-1974

PUBLISHER:

Collection Funder:- Atlantic Philanthropies Foundation

Publisher:- Historical Papers Research Archive

Location:- Johannesburg

©2013

LEGAL NOTICES:

Copyright Notice: All materials on the Historical Papers website are protected by South African copyright law and may not be reproduced, distributed, transmitted, displayed, or otherwise published in any format, without the prior written permission of the copyright owner.

Disclaimer and Terms of Use: Provided that you maintain all copyright and other notices contained therein, you may download material (one machine readable copy and one print copy per page) for your personal and/or educational non-commercial use only.

People using these records relating to the archives of Historical Papers, The Library, University of the Witwatersrand, Johannesburg, are reminded that such records sometimes contain material which is uncorroborated, inaccurate, distorted or untrue. While these digital records are true facsimiles of paper documents and the information contained herein is obtained from sources believed to be accurate and reliable, Historical Papers, University of the Witwatersrand has not independently verified their content. Consequently, the University is not responsible for any errors or omissions and excludes any and all liability for any errors in or omissions from the information on the website or any related information on third party websites accessible from this website.

This document forms part of the archive of the South African Institute of Race Relations (SAIRR), held at the Historical Papers Research Archive at The University of the Witwatersrand, Johannesburg, South Africa.